

Dell 2.0 Speaker AE215 User's Guide

Regulatory model: AE215



Notes, cautions, and warnings



NOTE: A NOTE indicates important information that helps you make better use of your computer.



CAUTION: A CAUTION indicates either potential damage to hardware or loss of data and tells you how to avoid the problem.



WARNING: A WARNING indicates a potential for property damage, personal injury, or death.

Copyright © 2016 Dell Inc. All rights reserved. This product is protected by U.S. and international copyright and intellectual property laws. Dell™ and the Dell logo are trademarks of Dell Inc. in the United States and/or other jurisdictions. All other marks and names mentioned herein may be trademarks of their respective companies.

2016 - 03

Rev. A00

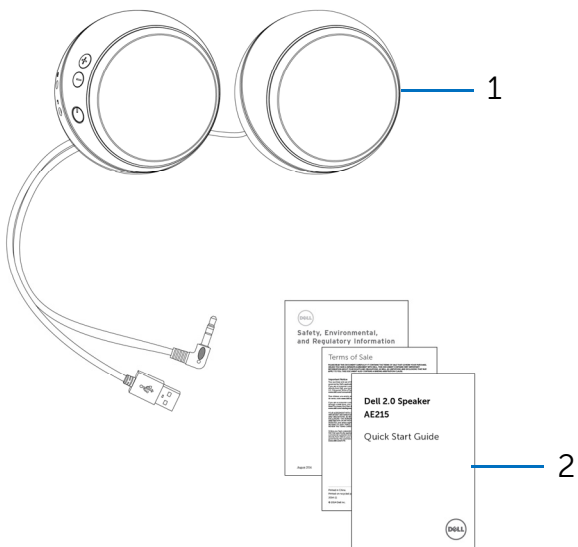
Contents

What's in the box.....	4
Features.....	5
Setting up your speaker.....	6
Powering your speaker on/off.....	6
Connecting your speaker.....	8
Audio-in port.....	8
Headphone jack.....	9
Adjusting the volume.....	10
Troubleshooting.....	11
Specifications.....	14
Statutory information.....	15
Warranty.....	15

What's in the box



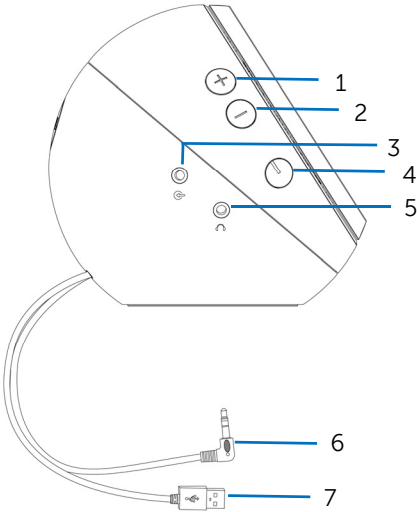
NOTE: The documents that shipped with the speaker may vary based on your region.



1 speaker

2 documents

Features



1 volume up

2 volume down

3 aux-in port

4 power button

5 headphone port

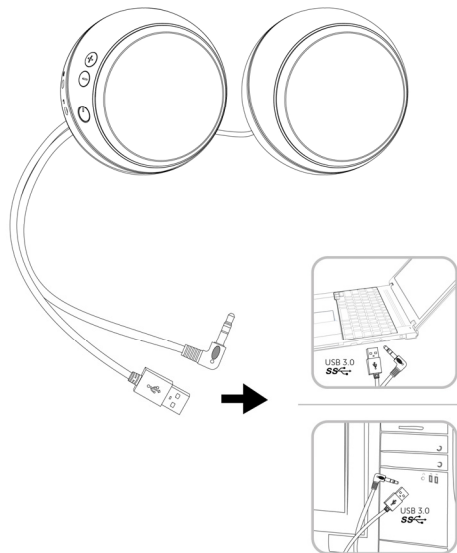
6 line-in cable

7 USB cable

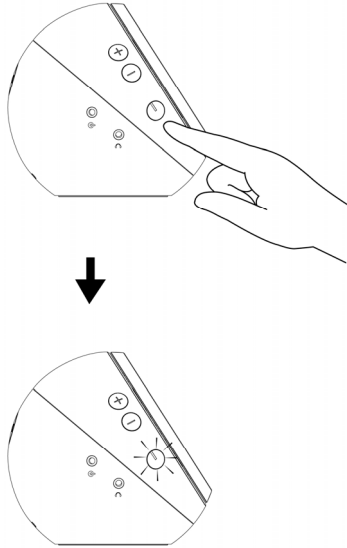
Setting up your speaker

Powering your speaker on/off

- 1 To power on the speaker, plug in the USB cable to the USB port on your computer.



- 2 Press and release the power button. The LED on the power button will light up to indicate that the device is on. An audio tone can be heard when the speaker is powered on.



- 3 To power off the speaker, press and release the power button. The LED on the power button will fade out to indicate that the device is off.

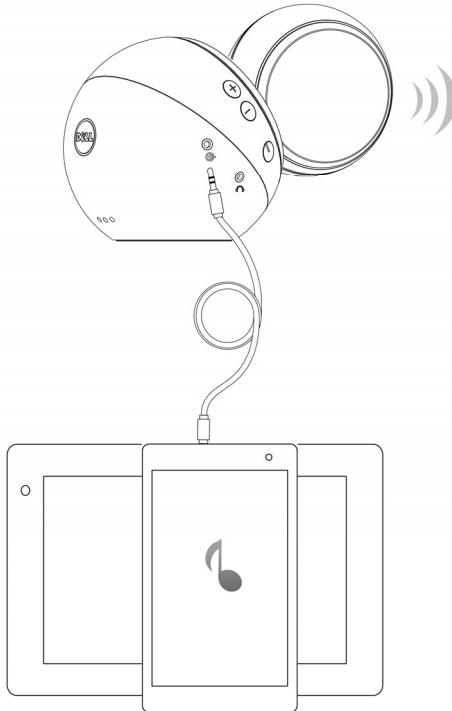
Connecting your speaker

Use the audio in or headphone jack to connect your audio device (tablet, smart phone) to your Dell speaker.

Audio-in port

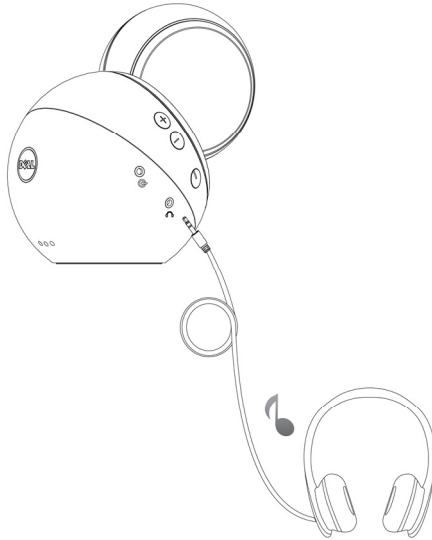
You can play audio using the audio-in cable that came with your audio device.

- 1 Connect the audio-in cable to the aux-in port on the speaker.
- 2 Connect the other end of the cable to the aux-in port on your audio device.
- 3 Play music and adjust the volume as desired.



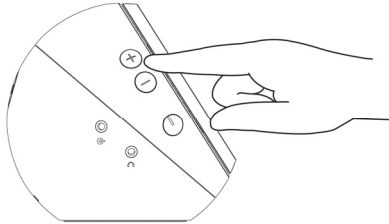
Headphone jack

- 1 Connect the headphone to the headphone jack on the speaker.
- 2 Play music and adjust the volume as desired.



Adjusting the volume

- 1 Press the + button to adjust the volume up. A soft dual tone can be heard when the speaker is at the maximum volume.
- 2 Press the - button to adjust the volume down. A soft single tone can be heard when the speaker is at the minimum volume.



Troubleshooting

Problems

Speaker is not functioning properly

Possible causes

The power button LED is off

Possible solutions

- If the power button LED is off, check if the USB cable is connected to a USB port. Connect the speaker to a USB port using the USB cable.
- Press the power button, you will hear an alert tone and the LED on the power button turns white to indicate that the speaker is on.
- Check if the connected audio device is playing audio and volume is not muted.

The power button LED is on but the speaker is not working in aux-in mode

- Make sure the audio cable is connected to the audio-in port and the other end is connected to an audio source.
- Reseat the audio cable and try again.
- Make sure that the volume level is turned to a higher volume level.

The power button LED is on but the speaker is not working using the line-in cable

- Make sure that the line-in cable of your speaker is connected to an audio device.
- Reseat the line-in cable and try again.

The speaker is connected to the computer or mobile device but no sound is coming out

- Make sure that the volume level is turned to a higher volume level.
- Check that the computer or mobile device is not in sleep mode.
- Restart the computer or mobile device and play music again.

Sound from the speaker is distorted

Distorted sound in aux-in or line-in mode

- Remove any obstructions between the speaker and the user.
- Make sure the audio cable is connected firmly to the speaker and your computer.
- Set the volume control on the audio device to a lower level.
- Decrease the volume level on the speaker.
- Clean and reseal all the cables.
- Test the speaker using another audio source, for example a portable music player.
- Make sure no loose objects are touching the speaker.

Low sound output

Volume is too low

- Remove any obstructions between the speaker and the user.
- Increase the volume level of the speaker and the audio source.

Static noise from the speaker Buzzing noise

- Test the speaker using another audio source. For example, use another a portable music player.
- Remove any obstructions between the speaker and the user.
- Make sure there are no loose objects hanging or touching the speaker.
- Decrease the volume level of the speaker.

Specifications

General

Model number	AE215
Connection type	USB
Supported operating systems	Microsoft Windows 7 Windows 8 Windows 8.1 Windows 10

Electrical

Operating voltage	5.0 V
Operating current	1.0 A
Output Power	USB 3.0: 2.5W x 2 continuous RMS power @10% THD USB 2.0: 1.25 W x 2 continuous RMS power @10% THD

Physical Characteristics

Enclosure:	
Diameter	120 mm (4.72 in)
Line in cable length	1800 mm (70.87 in)
USB cable length	1800 mm (70.87 in)
Weight	340 g (0.75 lb)

Environmental

Operating temperature	0°C to 40°C
Storage temperature	-40°C to 65°C
Operating humidity	90% maximum relative humidity non condensing
Storage humidity	90% maximum relative humidity non condensing

Statutory information

Warranty

Limited warranty and return policies

Dell-branded products carry a 1-year limited hardware warranty. If purchased together with a Dell system, it will follow the system warranty.

For U.S. customers:

This purchase and your use of this product are subject to Dell's end user agreement, which you can find at [Dell.com/terms](https://www.dell.com/terms). This document contains a binding arbitration clause.

For European, Middle Eastern and African customers:

Dell-branded products that are sold and used are subject to applicable national consumer legal rights, the terms of any retailer sale agreement that you have entered into (which will apply between you and the retailer) and Dell's end user contract terms.

Dell may also provide an additional hardware warranty—full details of the Dell end user contract and warranty terms can be found by going to [Dell.com](https://www.dell.com), selecting your country from the list at the bottom of the "home" page and then clicking the "terms and conditions" link for the end user terms or the "support" link for the warranty terms.

For non-U.S. customers:

Dell-branded products that are sold and used are subject to applicable national consumer legal rights, the terms of any retailer sale agreement that you have entered into (which will apply between you and the retailer) and Dell's warranty terms. Dell may also provide an additional hardware warranty —full details of Dell's warranty terms can be found by going to [Dell.com](https://www.dell.com), selecting your country from the list at the bottom of the "home" page and then clicking the "terms and conditions" link or the "support" link for the warranty terms.

Free Manuals Download Website

<http://myh66.com>

<http://usermanuals.us>

<http://www.somanuals.com>

<http://www.4manuals.cc>

<http://www.manual-lib.com>

<http://www.404manual.com>

<http://www.luxmanual.com>

<http://aubethermostatmanual.com>

Golf course search by state

<http://golfingnear.com>

Email search by domain

<http://emailbydomain.com>

Auto manuals search

<http://auto.somanuals.com>

TV manuals search

<http://tv.somanuals.com>