

Dell Active Pen PN557W User's Guide

Regulatory Model: PN556W



Notes, cautions, and warnings



NOTE: A NOTE indicates important information that helps you make better use of your product.



CAUTION: A CAUTION indicates either potential damage to hardware or loss of data and tells you how to avoid the problem.



WARNING: A WARNING indicates a potential for property damage, personal injury, or death.

Copyright © 2016 Dell Inc. or its subsidiaries. All rights reserved. Dell, EMC, and other trademarks are trademarks of Dell Inc. or its subsidiaries. Other trademarks may be trademarks of their respective owners.

2016 - 12

Rev. A00

Contents

- What’s in the box..... 5**
- Features..... 7**
- Setting up your Dell Active Pen..... 9**
 - Installing batteries..... 9
 - Installing the AAAA battery.....9
 - Installing the coin-cell batteries..... 10
 - Removing the coin-cell battery holder..... 12
 - Pairing with a Bluetooth device..... 12
- Active Pen Control Panel..... 14**
 - Installing Active Pen Control Panel..... 14
 - Using Active Pen Control Panel..... 15
 - System Application: Microsoft Windows 10 Anniversary,
Windows Ink Workspace..... 17
- Holding the Dell Active Pen..... 18**
- Troubleshooting..... 19**
- Specifications..... 22**
- Getting help and contacting Dell..... 23**
 - Self-help resources..... 23
 - Contacting Dell..... 23
- Statutory information..... 25**
 - Warranty..... 25



Regulatory statement.....26
FCC notices (U.S. only) and other regulatory information.....26



What's in the box

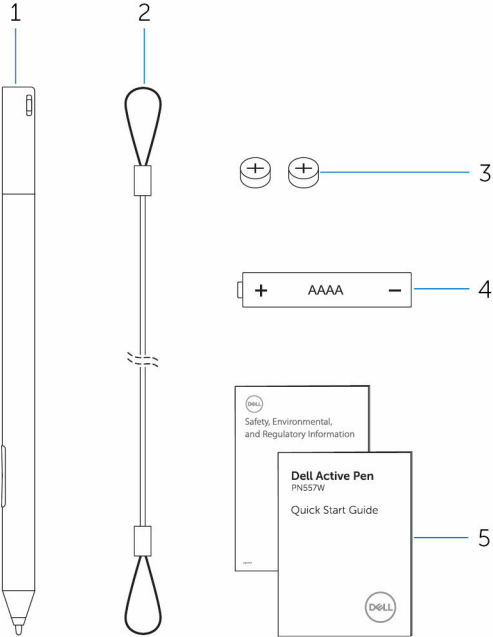


Figure 1. Contents in the box

- 1 Dell Active Pen
- 2 lanyard
- 3 coin-cell batteries (2)
- 4 AAAA battery
- 5 manuals

 **NOTE: For warranty purpose, note down the PPID number on the box or retain the box.**



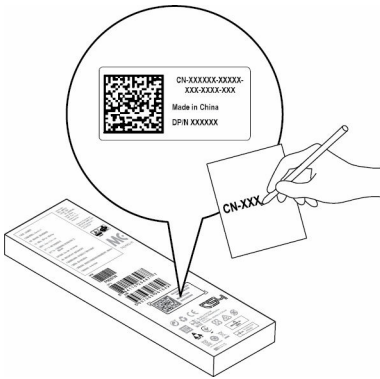



Figure 2. Noting down the PPID number

Features




Table 1. Features and functionality of the product

Feature	Functionality
1 Tip	Move the tip over a touch screen to move the pointer. Enables you to write, draw, and select objects.
2 Bottom barrel button	Press and hold this button and move the tip over the area you want to erase. To change the functionality of this button, see Active Pen Control Panel .
3 Top barrel button	Press this button to open the context menu or perform a right-click. To change the functionality of this button, see Active Pen Control Panel .
4 Bluetooth-pairing light	Blinking white light indicates the pairing mode is enabled. A solid white light indicates the pairing is complete. For information on pairing the pen with a Bluetooth device, see Pairing with a Bluetooth device .
5 Top button	<ul style="list-style-type: none">• Press and hold for 3.5 seconds to enable pairing mode.• Press and release to open OneNote. <p> NOTE: This feature works even when your device screen is locked.</p> <ul style="list-style-type: none">• Press twice in succession to capture a screenshot.• Press and hold or press twice in succession to wake up your computer or tablet from connected standby mode.




 **NOTE: This feature is only available on devices that support connected standby feature.**


- In presentation mode, press and hold to go to the next slide and press twice at short intervals to go to the previous slide.

 **NOTE: This feature is only available after installing the Active Pen Control Panel. For instructions on installing the Active Pen Control Panel, see [Installing Active Pen Control Panel](#).**

The new Active Pen Control Panel enables the top button to be programmed to launch specific applications listed in the content menu, the default applications launched from the top button are:

- Single Press — Launch OneNote
- Double Press — Screen Sketch
- Long Press — Launch Cortana

 **NOTE: These functions are available only in Windows 10 and Windows 10 Anniversary.**

 **NOTE: These functions are available only after installing the Active Pen Control Panel. For instructions on installing the Active Pen Control Panel, see [Installing Active Pen Control Panel](#).**

Setting up your Dell Active Pen

Installing batteries

Dell Active Pen uses one AAAA battery and two coin-cell batteries.

The AAAA battery provides power for the tip and the barrel buttons. The coin-cell batteries provide power for Bluetooth functionality and top button quick-launch features.

Installing the AAAA battery

CAUTION: Incorrectly installing the AAAA battery may damage the pen.

- 1 Remove the top cover from the pen.

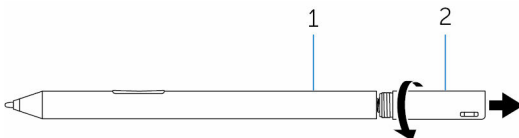


Figure 3. Removing the top cover

1 pen

2 top cover

- 2 Insert the AAAA battery into the pen with the positive side facing in.

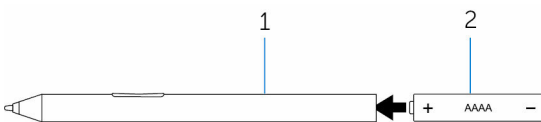


Figure 4. Installing the AAAA battery

1 pen

2 AAAA battery

- 3 Replace the top cover to the pen.




Figure 5. Replacing the top cover



Installing the coin-cell batteries

 **CAUTION:** Incorrectly installing the coin-cell batteries may damage the pen.

 **NOTE:** Pairing information is lost when you remove the coin-cell batteries. To pair the pen with your device, see [Pairing with a Bluetooth device](#).

- 1 Remove the top cover from the pen.

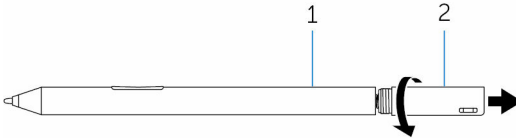



Figure 6. Removing the top cover

1 pen

2 top cover

- 2 Remove the coin-cell battery holder.

 **NOTE:** For more information, see [Removing the coin-cell battery holder](#).

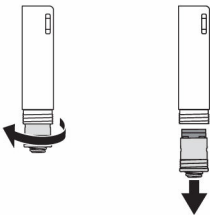


Figure 7. Removing coin-cell battery holder

1 top cover

2 coin-cell battery holder

- 3 Insert the coin-cell batteries with the negative side facing in.



Figure 8. Installing the coin-cell batteries

1 coin-cell batteries (2)

2 battery holder

- 4 Replace the coin-cell battery holder.

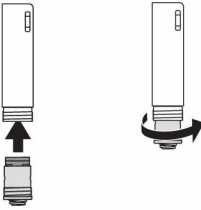


Figure 9. Replacing the coin-cell batteries holder

- 5 Replace the top cover.

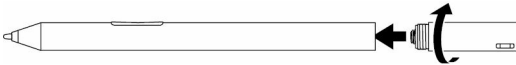


Figure 10. Replacing the top cover

Removing the coin-cell battery holder

Table 2. Removing the coin-cell battery holder by hand

Using your fingertips, unscrew the coin-cell battery holder from the top cover.

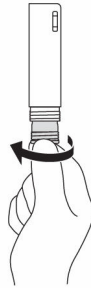


Figure 11. Removing the coin-cell battery holder by hand

Table 3. Removing the coin-cell battery holder with tools.

If you face difficulties in removing the coin-cell battery holder using fingertips, use a coin or a flat-head precision screwdriver.



Figure 12. Removing the coin-cell battery holder by hand



Figure 13. Removing the coin-cell battery holder using a screwdriver

Pairing with a Bluetooth device



NOTE: You can use Dell Active Pen only with selected Dell computers and tablets. For the list of supported devices, see www.dell.com.



NOTE: If the pen is already listed under Bluetooth devices, remove the pen from the list before pairing with your device.

- 1 Press and hold the top button for 3.5 seconds to enable pairing mode.
The Bluetooth-pairing light starts blinking to confirm the pairing mode is enabled.

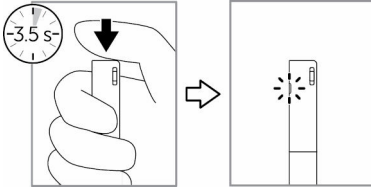


Figure 14. Turning on Bluetooth

- 2 In **Windows Search**, type **Bluetooth**.
- 3 From the list that appears, tap or click **Bluetooth Settings**.
- 4 Ensure that the Bluetooth is enabled.
- 5 From the list of devices, tap or click **Dell PN557W Pen** → **Pair**.



NOTE: If Dell PN557W Pen is not listed, ensure pairing mode is enabled on the pen.

- 6 Confirm the pairing process on both pen and device.
The Bluetooth-pairing light turns solid white for few seconds to indicate the pairing is complete and then the light turns off. After the pen and a device are paired, they connect automatically when bluetooth is enabled and they are within the bluetooth range.



Active Pen Control Panel

You can customize the buttons on your pen, change pressure sensitivity, and so on, using Active Pen Control Panel.

Installing Active Pen Control Panel

To install Active Pen Control Panel:

- 1 Turn on the computer or tablet.
- 2 Go to www.dell.com/support/home.
- 3 Under the **Browse for a product** section, tap or click **View products**.
- 4 Tap or click **Electronics & Accessories**.
- 5 Tap or click **Styli**.
- 6 Tap or click **Dell Active Pen PN557W**.
- 7 Tap or click **Drivers & downloads**.
- 8 Tap or click **Drivers for OS Deployment**.
- 9 Under **Active Pen Control Panel**, tap or click **Download**.
- 10 Save the file.
- 11 After the download is complete, open the file and follow the instructions on the screen to install the Active Pen Control Panel.



Using Active Pen Control Panel

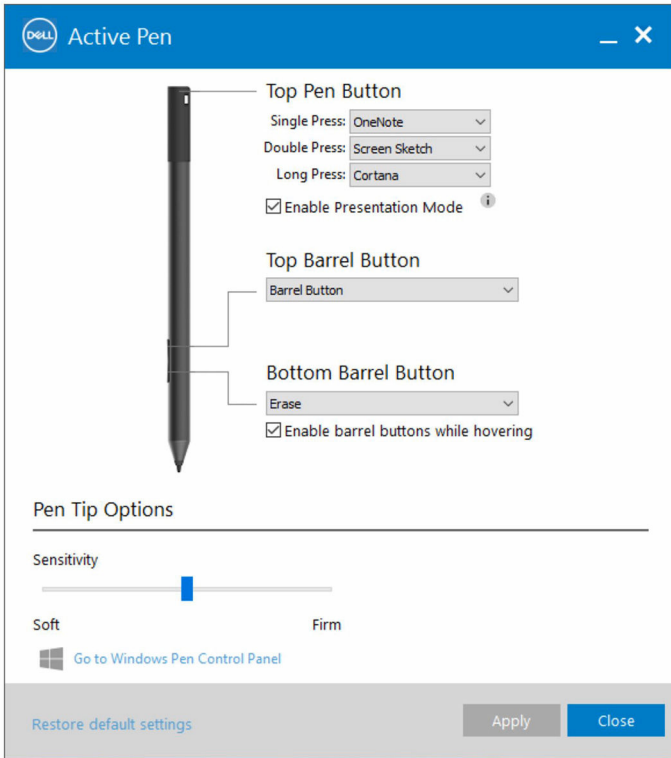


Figure 15. Active Pen Control Panel

Table 4. Dell Active Pen features

Top Pen Button	Select Enable Presentation Mode to use the button to navigate through a PowerPoint presentation.
Top Barrel Button	Enables you to select one of the following functions when you click the button: <ul style="list-style-type: none">• Context Menu(right-click) (enabled by default)• Erase (press and hold to erase)



- Page up
- Page down
- Copy
- Paste
- Undo
- Redo



NOTE: Select Enable barrel buttons while hovering to enable the selected Top Barrel Button function while hovering the tip over the screen without the tip touching the screen.

Bottom Barrel Button

Enables you to select one of the following functions when you click the button:

- **Erase** (press and hold to erase) (enabled by default)
- **Context Menu** (right-click)
- Page up
- Page down
- Copy
- Paste
- Undo
- Redo



NOTE: Select Enable barrel buttons while hovering to enable the selected Top Barrel Button function while hovering the tip over the screen without the tip touching the screen.

Pen Tip Options

Move the slider to change your pen sensitivity.



NOTE: Click Go to Microsoft Pen Control Panel for more configuration options.



NOTE: When the Active Pen Control Panel is opened it sets the default configuration for the button press features. Closing the Active Pen Control Panel enables other applications to set the default configuration for the Dell Active Pen features.

System Application: Microsoft Windows 10 Anniversary, Windows Ink Workspace

Change the Active Pen Control Panel software context menu settings for Single Press, Double Press and Long Press to **Defined by System**. . This sets Microsoft Ink Workspace as the default configuration for button press features.



Holding the Dell Active Pen

Hold the Dell Active Pen as you hold a pencil or pen. Adjust the grip so that you can use the barrel button easily. Ensure not to accidentally press the barrel buttons while drawing or positioning the Dell Active Pen.

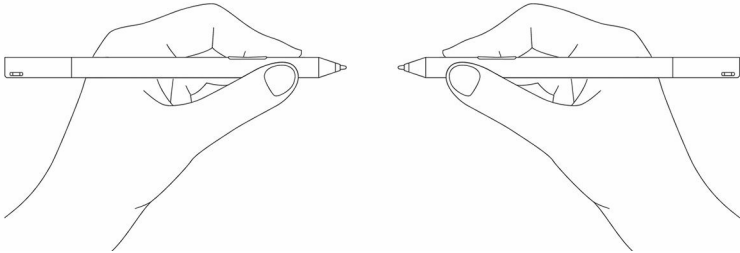


Figure 16. Using the Dell Active Pen hand position

Troubleshooting



NOTE: You can use Dell Active Pen only with selected Dell computers and tablets. For a list of supported devices, see www.dell.com.

Table 5. Dell Active Pen troubleshooting

Problems	Possible causes	Possible solutions
Pen does not work.	<ul style="list-style-type: none">• Batteries are installed incorrectly.• Batteries are out of charge.	<ul style="list-style-type: none">• Ensure the batteries are correctly installed. For more information, see Installing batteries.• Replace the batteries. For more information, see Installing batteries.
Pen does not write and the barrel buttons do not work.	AAAA battery is either incorrectly installed or out of charge.	Replace the AAAA battery. For more information, see Installing the AAAA battery .
Default functions for the barrel buttons do not work.	Functions not supported by application.	Test the barrel buttons in OneNote or another application that supports these features.
Pressing the top button once does not open OneNote.	<ul style="list-style-type: none">• OneNote is not installed.• Pen is not paired with your device.• Coin-cell batteries may be out of charge.	<ul style="list-style-type: none">• Ensure OneNote is installed on your device.• Ensure the pen is paired with your device. For more information, see Pairing with a Bluetooth device.• Change the coin-cell batteries. For more information, see



Problems	Possible causes	Possible solutions
		<p>Installing coin-cell batteries.</p> <ul style="list-style-type: none"> Remove the pen from the list of Bluetooth devices and re-pair it with your device. For more information, see Pairing with a Bluetooth device.
Pressing the top button twice in succession does not capture screenshot.	Windows update KB2968599 is not installed on your device.	Install the Windows update KB2968599 from the Microsoft website.
Unable to pair the pen with your device.	<ul style="list-style-type: none"> Unsupported device. Bluetooth driver on your device is outdated. 	<ul style="list-style-type: none"> Dell Active Pen works only with Dell devices. Install the latest Bluetooth driver for your device.
Pen shows as Not Connected under Bluetooth devices list.	Pen is not paired correctly with your device.	<ul style="list-style-type: none"> Install the latest Bluetooth driver for your device. Remove the pen from your Bluetooth list and pair it again. For more information on pairing the pen with your device, see Pairing with a Bluetooth device.
Bluetooth-pairing light does not turn on.	Coin-cell batteries may be out of charge.	Change the coin-cell batteries. For more information, see Installing coin-cell batteries.
Pressing and holding the top button or pressing the top button twice in succession does not wake	Your computer or tablet may not support the connected standby feature.	Ensure to use this feature on computers and tablets that support the connected standby

Problems	Possible causes	Possible solutions
up the computer or tablet from connected standby.		feature. Search PN557W on Dell website for a list of supported devices.



Specifications

Table 6. Dell Active Pen specifications

Model	PN557W
Length	160.59 mm (6.32 in)
Diameter	9.50 mm (0.37 in)
Weight	20 g (0.044 lb)
Wireless	Bluetooth Smart Low Energy 4.0
Wireless operating range	10 m (32.80 ft)
Pen tip detectable height	5 mm to 10 mm (0.20 in to 0.39 in)
Batteries	<ul style="list-style-type: none">• AAAA non-rechargeable battery• 319 coin-cell batteries (2)
Supported operating system	<ul style="list-style-type: none">• Windows 8.1 with the latest updates installed• Windows 10• Windows 10 Anniversary






Getting help and contacting Dell

Self-help resources

You can get information and help on Dell products and services using these online self-help resources:

Table 7. Getting help and contacting Dell

Information about Dell products and services	www.dell.com
Windows 8.1 and Windows 10	Dell Help & Support app 
Windows 10	Get started app 
Windows 8.1	Help + Tips app 
Accessing help in Windows 8.1 and Windows 10	In Windows search, type Help and Support , and press Enter .
Online help for operating system	www.dell.com/support/windows
Troubleshooting information, user manuals, setup instructions, product specifications, technical help blogs, drivers, software updates, and so on	www.dell.com/support

Contacting Dell

To contact Dell for sales, technical support, or customer service issues, see www.dell.com/contactdell.





NOTE: Availability varies by country and product, and some services may not be available in your country.



NOTE: If you do not have an active internet connection, you can find contact information on your purchase invoice, packing slip, bill, or Dell product catalog.

Statutory information

Warranty

Limited warranty and return policies

Dell-branded products carry a 1-year limited hardware warranty. If purchased together with a Dell system, it will follow the system warranty.

For U.S. customers:

This purchase and your use of this product are subject to Dell's end user agreement, which you can find at www.dell.com/terms. This document contains a binding arbitration clause.

For European, Middle Eastern and African customers:

Dell-branded products that are sold and used are subject to applicable national consumer legal rights, the terms of any retailer sale agreement that you have entered into (which will apply between you and the retailer) and Dell's end user contract terms.

Dell may also provide an additional hardware warranty—full details of the Dell end user contract and warranty terms can be found by going to www.dell.com, selecting your country from the list at the bottom of the “home” page and then clicking the “terms and conditions” link for the end user terms or the “support” link for the warranty terms.

For non-U.S. customers:

Dell-branded products that are sold and used are subject to applicable national consumer legal rights, the terms of any retailer sale agreement that you have entered into (which will apply between you and the retailer) and Dell's warranty terms. Dell may also provide an additional hardware warranty—full details of Dell's warranty terms can be found by going to www.dell.com, selecting your country from the list at the bottom of the “home” page and then clicking the “terms and conditions” link or the “support” link for the warranty terms.



Regulatory statement

FCC notices (U.S. only) and other regulatory information

For FCC notices and other regulatory information, see the regulatory compliance website located at www.dell.com/regulatory_compliance.

This device complies with Part 15 of the FCC Rules. Operation is subject to the following two conditions:

- 1 This device may not cause harmful interference.
- 2 This device must accept any interference received including interference that may cause undesired operation.



CAUTION: Changes or modifications on this unit that are not expressly approved by the party responsible for compliance which could void the user's authority to operate the equipment.

This equipment has been tested and found to comply with the limits for a class B digital device, pursuant to part 15 of the FCC Rules. These limits are designed to provide reasonable protection against harmful interference in a residential installation. This equipment generates, uses and can radiate radio frequency energy and if not installed and used in accordance with the instructions, may cause harmful interference to radio communications. However, there is no guarantee that interference will not occur in a particular installation. If this equipment does cause harmful interference to radio or television reception, which can be determined by turning the equipment off and on, the user is encouraged to try to correct the interference by one or more of the following measures:

- Reorient or relocate the receiving antenna.
- Increase the separation between the equipment and receiver.
- Connect the equipment into an outlet on a circuit different from that to which the receiver is connected.
- Consult the dealer or an experienced radio/TV technician for help.

Shielded cables must be used with this unit to ensure compliance with the Class B FCC Limits.

Free Manuals Download Website

<http://myh66.com>

<http://usermanuals.us>

<http://www.somanuals.com>

<http://www.4manuals.cc>

<http://www.manual-lib.com>

<http://www.404manual.com>

<http://www.luxmanual.com>

<http://aubethermostatmanual.com>

Golf course search by state

<http://golfingnear.com>

Email search by domain

<http://emailbydomain.com>

Auto manuals search

<http://auto.somanuals.com>

TV manuals search

<http://tv.somanuals.com>