

# Inspiron 24 3000 All-in-One Setup and Specifications

**Computer Model:** Inspiron 24-3477  
**Regulatory Model:** W21C  
**Regulatory Type:** W21C001



# Notes, cautions, and warnings

---



**NOTE:** A NOTE indicates important information that helps you make better use of your product.



**CAUTION:** A CAUTION indicates either potential damage to hardware or loss of data and tells you how to avoid the problem.



**WARNING:** A WARNING indicates a potential for property damage, personal injury, or death.

---

© 2018 Dell Inc. or its subsidiaries. All rights reserved. Dell, EMC, and other trademarks are trademarks of Dell Inc. or its subsidiaries. Other trademarks may be trademarks of their respective owners.

2018-01

Rev. A00

# Contents

<b>Set up your computer.....</b>	<b>5</b>
Set up the easel stand.....	8
Set up the pedestal stand.....	9
<b>Create a USB recovery drive for Windows.....</b>	<b>11</b>
Reinstall Windows using a USB recovery drive.....	11
<b>Views.....</b>	<b>13</b>
Front.....	13
Left.....	14
Back.....	15
Back panel.....	16
Bottom.....	17
Tilt.....	17
<b>Retractable camera.....</b>	<b>20</b>
<b>Specifications.....</b>	<b>21</b>
Computer model.....	21
System information.....	21
Dimensions and weight.....	21
Operating system.....	22
Memory.....	22
Ports and connectors.....	22
Communications.....	23



Wireless.....	23
Audio.....	24
Storage.....	24
Media-card reader.....	24
Camera.....	25
Power adapter.....	25
Display.....	25
Video.....	26
Computer environment.....	26
<b>Getting help and contacting Dell.....</b>	<b>28</b>
Self-help resources.....	28
Contacting Dell.....	29



# Set up your computer

---

- 1 Set up the [easel stand](#) or [pedestal stand](#).
- 2 Connect the keyboard and mouse.



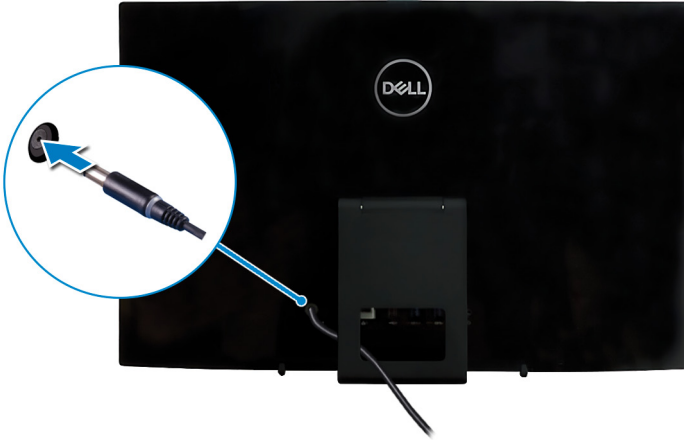
**NOTE: For setup instructions, see the documentation shipped with the keyboard and mouse.**



3 Connect the power adapter.

**⚠ WARNING:** Route the power-adapter cable through the routing guide on the stand to avoid potential damage to the power adapter and to avoid the unexpected system power-off when the stand is moved to a different orientation.

**Easel stand**



**Pedestal stand**



- 4 Press the power button.



- 5 Finish operating system setup.

**For Ubuntu:**

Follow the on-screen instructions to complete the setup. For more information about configuring the Ubuntu install, see the knowledge base article [SLN151664](https://www.dell.com/support/SLN151664) at [www.dell.com/support](http://www.dell.com/support).

**For Windows:**

Follow the on-screen instructions to complete the setup. When setting up, Dell recommends that you:

- Connect to a network for Windows updates.



**NOTE: If connecting to a secured wireless network, enter the password for the wireless network access when prompted.**

- If connected to the internet, sign-in with or create a Microsoft account. If not connected to the internet, create an offline account.
- On the **Support and Protection** screen, enter your contact details.



- 6 Locate and use Dell apps from the Windows Start menu—Recommended

**Table 1. Locate Dell apps**



### **Dell Product Registration**

Register your computer with Dell.



### **Dell Help & Support**

Access help and support for your computer.



### **SupportAssist**

Pro-actively checks the health of your computer's hardware and software. The SupportAssist OS Recovery tool troubleshoots issues with the operating system. For more information, see the SupportAssist documentation at [www.dell.com/support](http://www.dell.com/support).



**NOTE: Renew or upgrade your warranty by clicking the warranty expiry date in SupportAssist.**



### **Dell Update**

Updates your computer with critical fixes and latest device drivers as they become available.



### **Dell Digital Delivery**

Download software applications, which are purchased but not pre-installed on your computer.

- 7 Create recovery drive for Windows.



**NOTE: It is recommended to create a recovery drive to troubleshoot and fix problems that may occur with Windows.**

For more information, see [Create a USB recovery drive for Windows](#).

## Set up the easel stand

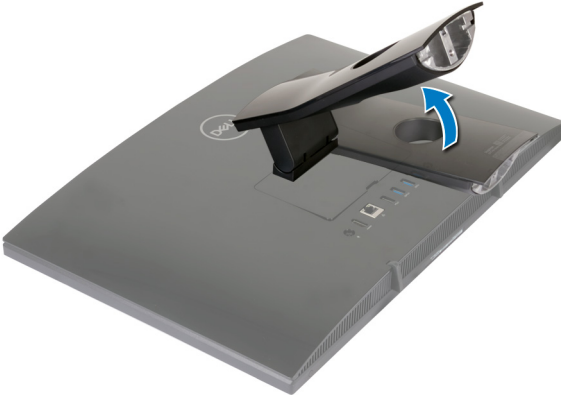
Lift the easel stand.





## Set up the pedestal stand

- 1 Lift the stand riser.



**2** Attach the base.



**3** Tighten the captive screw to secure the base to the stand riser.



# Create a USB recovery drive for Windows

---

Create a recovery drive to troubleshoot and fix problems that may occur with Windows. An empty USB flash drive with a minimum capacity of 16 GB is required to create the recovery drive.



**NOTE:** This process may take up to an hour to complete.



**NOTE:** The following steps may vary depending on the version of Windows installed. Refer to the [Microsoft support site](#) for latest instructions.

- 1 Connect the USB flash drive to your computer.
- 2 In Windows search, type *Recovery*.
- 3 In the search results, click **Create a recovery drive**.  
The **User Account Control** window is displayed.
- 4 Click **Yes** to continue.  
The **Recovery Drive** window is displayed.
- 5 Select **Back up system files to the recovery drive** and click **Next**.
- 6 Select the **USB flash drive** and click **Next**.  
A message appears, indicating that all data in the USB flash drive will be deleted.
- 7 Click **Create**.
- 8 Click **Finish**.

## Reinstall Windows using a USB recovery drive



**CAUTION:** This process formats the hard drive and removes all data on your computer. Ensure that you back up data on your computer before beginning this task.



**NOTE:** Before reinstalling Windows, ensure your computer has more than 2 GB of memory and more than 32 GB of storage space.





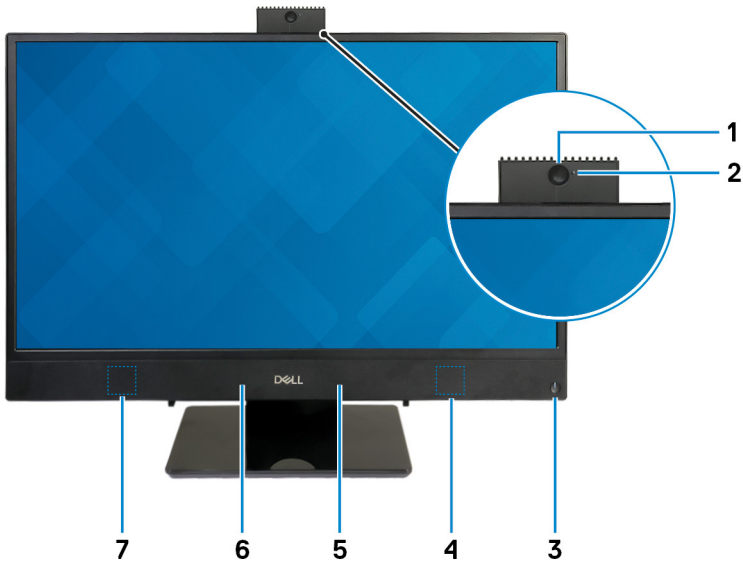
**NOTE: This process may take up to an hour to complete and your computer will restart during the recovery process.**

- 1 Connect the USB recovery drive to your computer.
- 2 Restart your computer.
- 3 Press F12 after the Dell logo is displayed on the screen to access the boot menu. A **Preparing one-time boot menu** message appears.
- 4 After the boot menu loads, select the USB recovery device under **UEFI BOOT**. The system reboots and a screen to **Choose the keyboard layout** is displayed.
- 5 Choose your keyboard layout.
- 6 In the **Choose an option** screen, click **Troubleshoot**.
- 7 Click **Recover from a drive**.
- 8 Choose one of the following options:
  - **Just remove my files** to do a quick format.
  - **Fully clean the drive** to do a complete format.
- 9 Click **Recover** to start the recovery process.

# Views

---

## Front



**1 Retractable camera**

Enables you to videochat, capture photos, and record videos. This camera can be retracted to protect your privacy.

**2 Camera-status light**

Turns on when the camera is in use.

**3 Power button**

Press to turn on the computer if it is turned off, in sleep state, or in hibernate state.

Press to put the computer in sleep state if it is turned on.

Press and hold for 4 seconds to force shut-down the computer.





**NOTE:** You can customize the power-button behavior in Power Options. For more information, see *Me and My Dell* at [www.dell.com/support/manuals](http://www.dell.com/support/manuals).

4 **Right speaker**

Provides audio output.

5 **Right microphone**

Provides digital sound input for audio recording and voice calls.

6 **Left microphone**

Provides digital sound input for audio recording and voice calls.

7 **Left speaker**

Provides audio output.

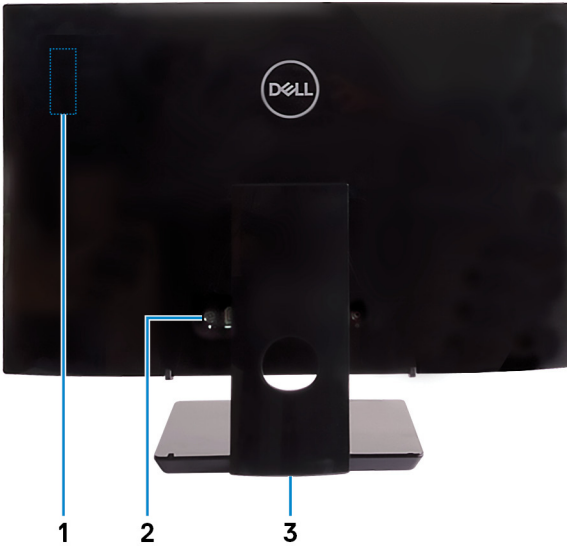
## Left



1 **SD-card slot**

Reads from and writes to the SD card.

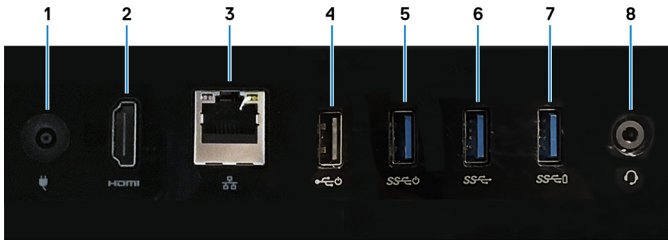
# Back



- 1 Radio regulatory label**  
Contains the regulatory information of the wireless components for your computer.
- 2 Back panel**  
Connect power, USB, audio, and other devices.
- 3 Regulatory label**  
Contains regulatory information of your computer.



# Back panel



**1 Power-adaptor port**

Connect a power adapter to provide power to your computer.

**2 HDMI-out port**

Connect a TV or another HDMI-in enabled device. Provides video and audio output.

**3 Network port**

Connect an Ethernet (RJ45) cable from a router or a broadband modem for network or Internet access.

**4 USB 2.0 port with Power on/Wake-up support**

Connect peripherals such as external storage devices and printers. Provides data transfer speeds up to 480 Mbps. Wake the computer from standby with the keyboard or mouse connected to this port.

**5 USB 3.1 Gen 1 port with Power on/Wake-up support**

Connect peripherals such as external storage devices and printers. Provides data transfer speeds up to 5 Gbps. Wake the computer from standby with the keyboard or mouse connected to this port.

**6 USB 3.1 Gen 1 port**


Connect peripherals such as external storage devices and printers. Provides data transfer speeds up to 5 Gbps.


**7 USB 3.1 Gen 1 port with PowerShare**

Connect peripherals such as external storage devices and printers.

Provides data transfer speeds up to 5 Gbps. PowerShare enables you to charge your USB devices even when your computer is turned off.



 **NOTE:** If your computer is turned off or in hibernate state, you must connect the power adapter to charge your devices using the PowerShare port. You must enable this feature in the BIOS setup program.

 **NOTE:** Certain USB devices may not charge when the computer is turned off or in sleep state. In such cases, turn on the computer to charge the device.

## 8 Headset port

Connect headphones or a headset (headphone and microphone combo).

# Bottom



### 1 Service Tag label

The Service Tag is a unique alphanumeric identifier that enables Dell service technicians to identify the hardware components in your computer and access warranty information.

### 2 Display Built-in Self Test button

Run the built-in self test for the display

For more information, see the Troubleshooting section in the service manual at [www.dell.com/support/manuals](http://www.dell.com/support/manuals).

# Tilt

Easel stand





Pedestal stand





# Retractable camera

---



**NOTE:** Extend the camera while using any camera function so that the camera is not blocked.

# Specifications

---

## Computer model

Inspiron 24-3477.

## System information

**Table 2. System information**

Processor	<ul style="list-style-type: none"><li>• 7<sup>th</sup> Generation Intel Core i3/i5/i7</li><li>• Intel Pentium Dual Core</li></ul>
System chipset	Integrated in processor

## Dimensions and weight

**Table 3. Dimensions and weight**

Height	358 mm (14.49 in)
Width	548.80 mm (21.61 in)
Depth	41.5 mm (1.63 in)
Weight without stand (maximum)	<ul style="list-style-type: none"><li>• Touch: 5.85 kg (12.89 lb)</li><li>• Non-touch: 5.35 kg (11.79 lb)</li></ul>
Weight without stand (minimum)	<ul style="list-style-type: none"><li>• Touch: 5.12 kg (11.29 lb)</li><li>• Non-touch: 4.62 kg (10.19 lb)</li></ul>



**NOTE: The weight of your computer varies depending on the configuration ordered and the manufacturing variability.**



# Operating system

**Table 4. Operating system**

Operating systems supported	<ul style="list-style-type: none"><li>• Ubuntu</li><li>• Windows 10 Home 64-bit</li><li>• Windows 10 Professional 64-bit</li></ul>
-----------------------------	--

# Memory

**Table 5. Memory specifications**

Slots	Two SODIMM slots
Type	DDR4
Speed	2133 MHz
Configurations supported:	
Per slot	2 GB, 4 GB, 8 GB, and 16 GB
Total memory	4 GB, 6 GB, 8 GB, 12 GB, and 16 GB

# Ports and connectors

**Table 6. Ports and connectors specifications**

---

<b>External:</b>	
Network	One RJ45 port
USB	<ul style="list-style-type: none"><li>• One USB 3.1 Gen 1 port with Power on/Wake-up support</li><li>• One USB 3.1 Gen 1 port with PowerShare</li><li>• One USB 2.0 port with Power on/Wake-up support</li><li>• One USB 3.1 Gen 1 port</li></ul>
Audio/Video	<ul style="list-style-type: none"><li>• One headset port</li></ul>



---

**External:**

---

- One HDMI v1.4 port

**Table 7. Ports and connectors specifications**

---

**Internal:**

---

M.2 card

- One M.2 slot for SSD card (SATA) (for 7<sup>th</sup> Generation Intel Core processors)
- One M.2 slot for Wireless and Bluetooth combo card

## Communications

**Table 8. Communication specifications**

Ethernet

10/100/1000 Mbps Ethernet controller integrated on system board

Wireless

- Wi-Fi 802.11a/b/g/n/ac
- Bluetooth 4.1

## Wireless

**Table 9. Wireless**

Transfer rate

433 Mbps

Frequency bands

2.4 GHz/5 GHz

Encryption

- 64-bit/128-bit WEP
- AES-CCMP
- TKIP



# Audio

**Table 10. Audio specifications**

Controller	Realtek ALC3246
Speakers	Two
Speaker output	<ul style="list-style-type: none"><li>· Average: 3 W</li><li>· Peak: 3.5 W</li></ul>
Microphone	Digital-array microphones

# Storage

**Table 11. Storage specifications**

Interface	<ul style="list-style-type: none"><li>· SATA 6 Gbps for hard drive</li><li>· PCIe up to 16 Gbps for M.2 card</li></ul>
Hard drive	One 2.5-inch drive (SATA)
Solid-state drive	One M.2 drive (SATA/PCIe)
Capacity supported:	
Hard drive	Up to 2 TB
Solid-state drive	<ul style="list-style-type: none"><li>· PCIe NVMe: Up to 1 TB</li><li>· SATA: Up to 256 GB</li></ul>

# Media-card reader

**Table 12. Media-card reader specifications**

Type	One SD-card slot
Cards supported	SD card





# Camera

**Table 13. Camera specifications**

Resolution	<ul style="list-style-type: none"><li>• Still image: 1280 x 720 (HD); 0.92 megapixels</li><li>• Video: 1280 x 720 (HD) at 30 fps (maximum)</li></ul>
Diagonal viewing angle	74.6 degrees

# Power adapter

**Table 14. Power adapter specifications**

	<b>65 W</b>	<b>90 W</b>
Input current (maximum)	1.70 A	1.50 A
Output current (continuous)	3.34 A	4.62 A
Input Voltage	100 VAC to 240 VAC	
Input frequency	50 Hz to 60 Hz	
Rated output voltage	19.50 VDC	
Temperature range:		
Operating	0°C to 40°C (32°F to 104°F)	
Storage	-40°C to 70°C (-40°F to 158°F)	

# Display

**Table 15. Display specifications**

	<b>23.8-inch FHD</b>
Resolution	1920 x 1080



---

**23.8-inch FHD**

---

(maximum)

Pixel pitch 0.2475 mm

Dimensions:

Height 296.46 mm (11.67 in)

Width 527.04 mm (20.74 in)

Diagonal 604.70 mm (23.8 in)

Refresh rate 60 Hz

Controls Program menus

## Video

**Table 16. Video specifications**



	<b>Integrated</b>	<b>Discrete</b>
Controller	<ul style="list-style-type: none"><li>Intel HD Graphics 610</li><li>Intel HD Graphics 620</li></ul>	NVIDIA GeForce MX110
Memory	Shared system memory	2 GB GDDR5

## Computer environment

**Airborne contaminant level:** G1 as defined by ISA-S71.04-1985

**Table 17. Computer environment**

	<b>Operating</b>	<b>Storage</b>
Temperature range	10°C to 35°C (50°F to 95°F)	-40°C to 65°C (-40°F to 149°F)
Relative humidity (maximum)	20% to 80% (non-condensing)	5% to 95% (non-condensing)

	Operating	Storage
	 <b>NOTE: Maximum dew point temperature = 26°C</b>	 <b>NOTE: Maximum dew point temperature = 33°C</b>
Vibration (maximum)*	0.24 GRMS	1.37 GRMS
Shock (maximum)	40 G†	105 G‡
Altitude (maximum)	-15.2 m to 3048 m (-50 ft to 10,000 ft)	-15.2 m to 10,668 m (-50 ft to 35,000 ft)

\* Measured using a random vibration spectrum that simulates user environment.

† Measured using a 2 ms half-sine pulse when the hard drive is in use.

‡ Measured using a 2 ms half-sine pulse when the hard-drive head is in parked position.



# Getting help and contacting Dell

## Self-help resources

You can get information and help on Dell products and services using these self-help resources:

### Table 18. Self-help resources

Information about Dell products and services

[www.dell.com](http://www.dell.com)

Dell Help & Support app



Tips



Contact Support

In Windows search, type Contact Support, and press Enter.

Online help for operating system

[www.dell.com/support/windows](http://www.dell.com/support/windows)

[www.dell.com/support/linux](http://www.dell.com/support/linux)

Troubleshooting information, user manuals, setup instructions, product specifications, technical help blogs, drivers, software updates, and so on.

[www.dell.com/support](http://www.dell.com/support)

Dell knowledge base articles for a variety of computer concerns.

- 1 Go to [www.dell.com/support](http://www.dell.com/support).
- 2 Type the subject or keyword in the **Search** box.
- 3 Click **Search** to retrieve the related articles.

Learn and know the following information about your product:

See *Me and My Dell* at [www.dell.com/support/manuals](http://www.dell.com/support/manuals).

- Product specifications
- Operating system

- Setting up and using your product
- Data backup
- Troubleshooting and diagnostics
- Factory and system restore
- BIOS information

To locate the *Me and My Dell* relevant to your product, identify your product through one of the following:

- Select **Detect Product**.
- Locate your product through the drop-down menu under **View Products**.
- Enter the **Service Tag number** or **Product ID** in the search bar.

## Contacting Dell

To contact Dell for sales, technical support, or customer service issues, see [www.dell.com/contactdell](http://www.dell.com/contactdell).



**NOTE: Availability varies by country and product, and some services may not be available in your country.**



**NOTE: If you do not have an active internet connection, you can find contact information on your purchase invoice, packing slip, bill, or Dell product catalog.**



## Free Manuals Download Website

<http://myh66.com>

<http://usermanuals.us>

<http://www.somanuals.com>

<http://www.4manuals.cc>

<http://www.manual-lib.com>

<http://www.404manual.com>

<http://www.luxmanual.com>

<http://aubethermostatmanual.com>

Golf course search by state

<http://golfingnear.com>

Email search by domain

<http://emailbydomain.com>

Auto manuals search

<http://auto.somanuals.com>

TV manuals search

<http://tv.somanuals.com>