



Setting up your Dell Storage Network Attached Storage Solution

1 Before you begin

WARNING: Before you set up and operate your Dell Storage system, read through, and follow safety instructions that shipped with your system.

- Dell Software License Agreement**
- Before using your system, read through the Dell Software License Agreement that shipped with the system.
 - You must consider any media of Dell installed software as backup copies of the software installed on your system.
 - If you do not accept the terms of the agreement, call the customer assistance telephone number. For customers in the United States, call 800-WWW-DELL ((800) 999-3355). For customers outside the United States, go to dell.com/support and select your country or region in the lower right corner of the page.
 - For more information, go to:
 - dell.com/support/home for documentation and information updates.
 - dell.com/support, type the **Service Tag**, and then click **Submit**.

Verifying package contents
Verify that all components listed on your packing slip are available. Save all documentation and accessories.

Installing system in a rack
This system requires a properly grounded electrical outlet, a compatible rack, and a rack installation kit. For more information, see the section [For more information](#) in this document.

- Locating your system Service Tag**
- Your system is identified by a unique Express Service Code and Service Tag number. Pull out the information tag at the front of the system to view the Express Service Code and Service Tag.
 - Alternatively, the information may be on a sticker on the chassis.
 - This information is used by Dell to route customer support calls to the appropriate personnel, service teams.

NOTE: The illustrations in this document are not intended to represent a specific NAS system.

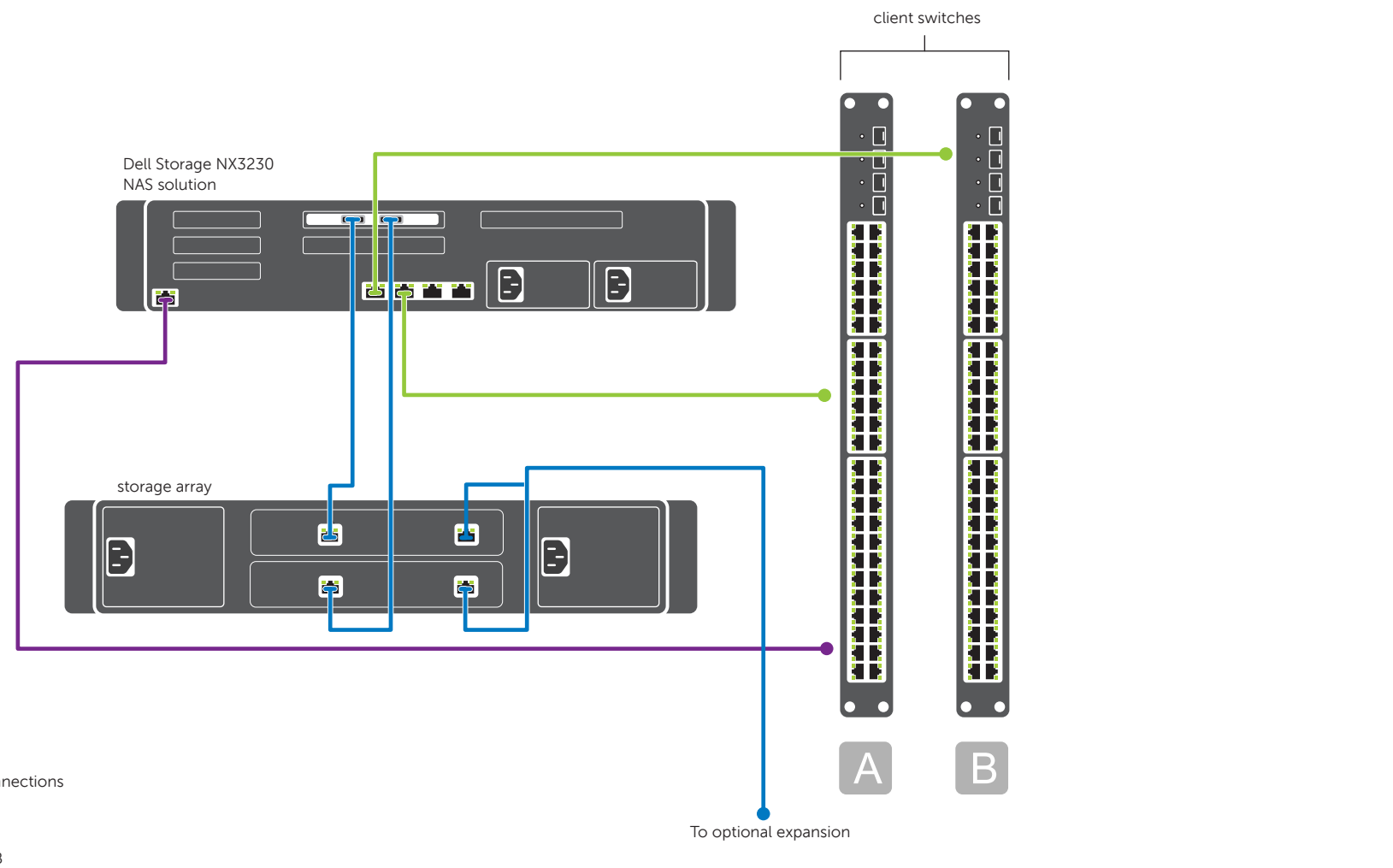
Default password
The default password for the network attached storage (NAS) system is **Stor@ge!**

Default system name
Your system is configured with a default system name of D<ServiceTag>, where <ServiceTag> is the Service Tag number located on the system. To locate the Service Tag of your system, see the section [Locating your system Service Tag](#) in this document.



For more information about NX series documentation, see dell.com/storagemanuals. Always read through the updates first, because they often supersede information in other documents.

2 Cabling the system or solution



NOTE: NX3230 NAS solution supports MD14xx and MD3xxx storage arrays.

3 Turning on and connecting your system

- Turning on your storage array**
1. Turn on the MD series storage arrays and any additional expansion enclosure(s). The expansion status LED displays steady blue. If the status LED glows solid amber, it implies that the storage array is initializing.
 2. After the storage arrays and enclosure(s) are initialized, start the NX3230 NAS solution.

Connecting your system

Using a Remote Desktop
If Dynamic Host Configuration Protocol (DHCP) and Domain Name System (DNS) are implemented on your network, your system automatically configures the network settings. You can start the Remote Desktop from a client and remotely access the NAS system using the default system name.

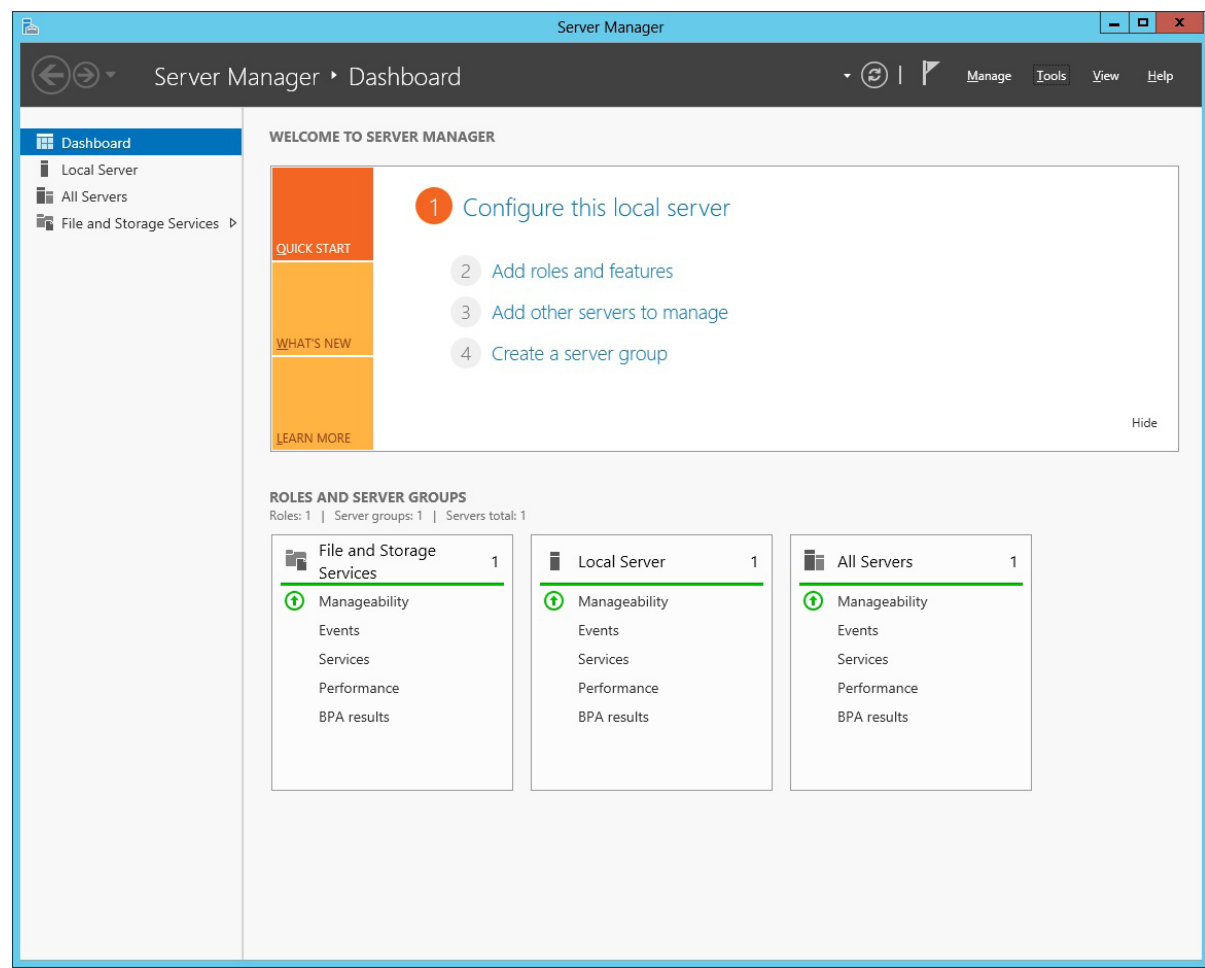
For example, on the **Remote Desktop Connection** page, type: D<ServiceTag>

where <ServiceTag> is the Service Tag number located on the system.

Using a Keyboard, Video, and Mouse
Connect a keyboard, monitor, and mouse directly to the NAS system for local administration.

NOTE: You can also use the optional iDRAC graphical user interface for remote administration. For information about initial setup, configuring iDRAC, and console redirection, see the *Integrated Dell Remote Access Controller User's Guide* at dell.com/support/home.

4 Initial configuration



1. When you start your NAS system that runs Windows Storage Server 2012 for the first time, press **OK** on the **Default Password** screen.
NOTE: Before changing the password, ensure that you change the system language according to your preference.
2. To change the default language, navigate to **C:\Dell MUI**, and run the appropriate language batch file. Complete the on-screen instructions to install your preferred language.
3. To change your administrator password, press Press **Ctrl+Alt+Delete**, and then click **Change a Password**.

Server Manager starts automatically the first time you log in. In **Server Manager**, click **Configure this local server** to:

- Change the computer name
- Specify the domain
- Check for latest Windows updates
- Specify the time zone
- Configure remote desktop

NOTE: To start a software application, on the taskbar, click **Start**, and then click the program name.

Starting remote desktop

If Dynamic Host Configuration Protocol (DHCP) and Domain Name System (DNS) are implemented on your network, your system automatically configures the network settings. You can start Remote Desktop from a client and remotely access the NAS system using the default system name.

For example, in the **Remote Desktop Connection** dialog box, type **D<ServiceTag>**, where **<ServiceTag>** is your system Service Tag, and then click **Connect**. To locate the Service Tag of your system, see the topic **Locating your system Service Tag** in this document.

NOTE: The default password of the NAS system is **Stor@ge!**

5 More information

Documentation

To view the documentation of your Dell PowerVault NAS system, go to dell.com/support and type the Service Tag of your system. To locate the Service Tag of your system, see the topic **Locating Your System Service Tag** in this document. The following documents are available for your PowerVault NAS system.

Title	Description
Getting Started Guide	Provides an overview of system features, setting up your solution, and technical specifications. This document is also shipped with your system.
Owner's Manual	Provides information about solution features and describes the process of troubleshooting the system and installing or replacing system components.
Rack Installation Instructions	Describes the process of installing your system into a rack. This document is also shipped with your rack solution.
Administrator's Guide	Provides information about configuring and managing the system.
Troubleshooting Guide	Provides information about troubleshooting the software and the system.
Server Administrator Storage Management User's Guide	Describes the process of installing, configuring, and using Dell OpenManage Server Administrator software to manage your PowerVault NAS system. NOTE: For the <i>Server Administrator Storage Management User's Guide</i> and other related Dell OpenManage documentation, see dell.com/openmanagemanuals .

Documentation feedback

If you have any feedback about this document, write to documentation_feedback@dell.com. Alternatively, click the **Feedback** link in the upper left corner of your documentation web page.

Free Manuals Download Website

<http://myh66.com>

<http://usermanuals.us>

<http://www.somanuals.com>

<http://www.4manuals.cc>

<http://www.manual-lib.com>

<http://www.404manual.com>

<http://www.luxmanual.com>

<http://aubethermostatmanual.com>

Golf course search by state

<http://golfingnear.com>

Email search by domain

<http://emailbydomain.com>

Auto manuals search

<http://auto.somanuals.com>

TV manuals search

<http://tv.somanuals.com>