

Dell SCv300 and SCv320 Expansion Enclosure Owner's Manual



Notes, Cautions, and Warnings

-  **NOTE:** A NOTE indicates important information that helps you make better use of your product.
-  **CAUTION:** A CAUTION indicates either potential damage to hardware or loss of data and tells you how to avoid the problem.
-  **WARNING:** A WARNING indicates a potential for property damage, personal injury, or death.

Contents

About this Guide.....	4
Revision History.....	4
Audience.....	4
Contacting Dell.....	4
Related Publications.....	4
1 About the SCv300 and SCv320 Expansion Enclosure.....	5
SCv300 and SCv320 Expansion Enclosure Overview.....	5
SCv300 and SCv320 Expansion Enclosure Monitoring and Diagnostics.....	5
SCv300 and SCv320 Expansion Enclosure Front-Panel Features and Indicators.....	5
SCv300 and SCv320 Expansion Enclosure Back-Panel Features and Indicators.....	6
SCv300 and SCv320 Expansion Enclosure EMM Features and Indicators.....	7
EMM Failover.....	7
SCv300 and SCv320 Expansion Enclosure Drives.....	8
2 Replacing SCv300 and SCv320 Expansion Enclosure Components.....	9
Safety Precautions.....	9
Installation Safety Precautions.....	9
Electrical Safety Precautions.....	9
Electrostatic Discharge Precautions.....	10
General Safety Precautions.....	10
Pre-Replacement Procedures.....	10
Send Diagnostic Data Using Dell SupportAssist.....	10
Change the Operation Mode of the Storage Center to Maintenance.....	10
Replacing the Front Bezel.....	11
Replacing Hard Drives	11
SCv300 and SCv320 Expansion Enclosure Drive Numbering.....	11
Identify the Failed Hard Drive.....	12
Replace a Hard Drive.....	13
Replacing Rack Rails.....	15
Post-Replacement Procedures.....	16
Send Diagnostic Data Using Dell SupportAssist.....	16
Change the Operation Mode of the Storage Center to Normal.....	16
3 Troubleshooting SCv300 and SCv320 Components.....	17
Troubleshooting Power Supply/Cooling Fan Modules.....	17
Troubleshooting Hard Drives.....	17
Troubleshooting Enclosure Management Modules.....	17
Troubleshooting the Control Panel.....	18
4 SCv300 and SCv320 Expansion Enclosure Technical Specifications.....	19
Technical Specifications.....	19



About this Guide

This guide describes how to perform service and maintenance on the SCv300 and SCv320 expansion enclosure.

Revision History

Document Number: 680-142-001

Revision	Date	Description
A	October 2017	Initial release

Audience

The information provided in this guide is intended for use by Dell end users.

Contacting Dell

Dell provides several online and telephone-based support and service options. Availability varies by country and product, and some services might not be available in your area.

To contact Dell for sales, technical support, or customer service issues, go to www.dell.com/support.

- For customized support, type your system service tag on the support page and click **Submit**.
- For general support, browse the product list on the support page and select your product.

Related Publications

The following documentation is available for the SCv300 and SCv320 expansion enclosure.

- *Dell Storage Center SCv300 and SCv320 Expansion Enclosure Getting Started Guide*
Provides information about an SCv300/SCv320 expansion enclosure, such as installation instructions and technical specifications.
- *Dell Storage Center Software Update Guide*
Describes how to update Storage Center software from an earlier version to the current version.
- *Dell Storage Center Command Utility Reference Guide*
Provides instructions for using the Storage Center Command Utility. The Command Utility provides a command-line interface (CLI) to enable management of Storage Center functionality on Windows, Linux, Solaris, and AIX platforms.
- *Dell Storage Center Command Set for Windows PowerShell*
Provides instructions for getting started with Windows PowerShell cmdlets and scripting objects that interact with the Storage Center using the PowerShell interactive shell, scripts, and PowerShell hosting applications. Help for individual cmdlets is available online.
- *Dell Storage Manager Administrator's Guide*
Provides instructions for using the Data Collector Manager and the Dell Storage Manager Client.
- *Dell TechCenter*
Provides technical white papers, best practice guides, and frequently asked questions about Dell Storage products. Go to <http://en.community.dell.com/techcenter/storage/>.



About the SCv300 and SCv320 Expansion Enclosure

An SCv300 and SCv320 expansion enclosure provides expansion storage for a Dell Storage Center. The SCv300 and SCv320 expansion enclosure connects directly to the SAS ports on the back of the storage system.

SCv300 and SCv320 Expansion Enclosure Overview

The SCv300 is a 2U expansion enclosure that supports up to 12 3.5-inch hard drives installed in a four-column, three-row configuration. The SCv320 is a 2U expansion enclosure that supports up to 24 2.5-inch hard drives installed vertically side by side. An SCv300 and SCv320 expansion enclosure ships with two redundant power supply/cooling fan modules and two redundant enclosure management modules (EMMs).

SCv300 and SCv320 Expansion Enclosure Monitoring and Diagnostics

The Storage Center OS generates alert messages for temperature, I/O module, fan module, disk, and power conditions for Storage Center components. Use the Dell Storage Manager to view these alerts.

LED indicators on the expansion enclosure also notify you of possible problems.

SCv300 and SCv320 Expansion Enclosure Front-Panel Features and Indicators

The front panel shows the expansion enclosure status and power supply status.

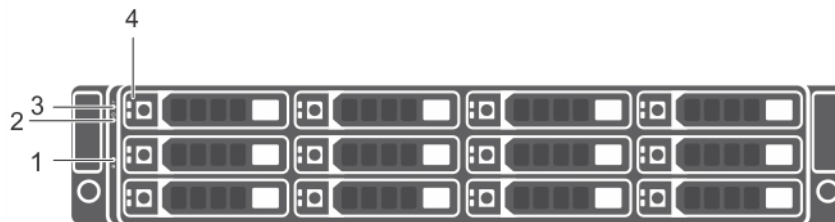





Figure 1. SCv300 Front-Panel Features and Indicators



Figure 2. SCv320 Front-Panel Features and Indicators



Item	Name	Icon	Description
1	System identification button		The system identification button on the front control panel can be used to locate a particular expansion enclosure within a rack. When the button is pressed, the system status indicators on the control panel and the Enclosure Management Module (EMM) blink blue until the button is pressed again.
2	Power LED		The power LED lights when at least one power supply unit is supplying power to the expansion enclosure.
3	Expansion enclosure status LED		The expansion enclosure status LED lights when the expansion enclosure power is on. <ul style="list-style-type: none"> • Solid blue during normal operation. • Blinks blue when a host server is identifying the expansion enclosure or when the system identification button is pressed. • Blinks amber or remains solid amber for a few seconds and then turns off when the EMMs are starting or resetting. • Blinks amber for an extended time when the expansion enclosure is in a warning state. • Remains solid amber when the expansion enclosure is in the fault state.
4	Hard disk drives		<ul style="list-style-type: none"> • SCv300 – Up to 12 3.5-inch SAS hot-swappable hard disk drives. • SCv320 – Up to 24 2.5-inch SAS hot-swappable hard disk drives.

SCv300 and SCv320 Expansion Enclosure Back-Panel Features and Indicators

The back panel provides controls to power up and reset the expansion enclosure, indicators to show the expansion enclosure status, and connections for back-end cabling.

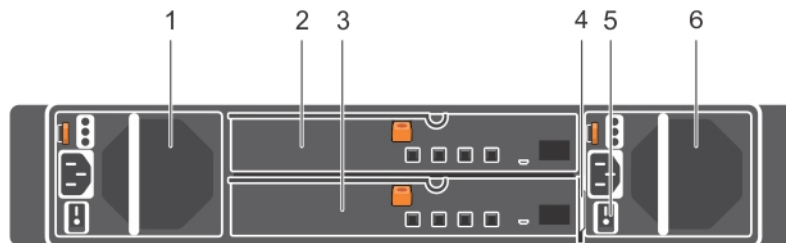


Figure 3. SCv300 and SCv320 Expansion Enclosure Back Panel Features and Indicators

Item	Name	Description
1	Power supply unit and cooling fan module (PS1)	600 W power supply
2	Enclosure management module (EMM 0)	The EMM provides a data path between the expansion enclosure and the storage controllers. The EMM also provides the management functions for the expansion enclosure.
3	Enclosure management module (EMM 1)	The EMM provides a data path between the expansion enclosure and the storage controllers. The EMM also provides the management functions for the expansion enclosure.
4	Information tag	A slide-out label panel that records system information such as the Service Tag

Item	Name	Description
5	Power switches (2)	Controls power for the expansion enclosure. There is one switch for each power supply.
6	Power supply unit and cooling fan module (PS2)	600 W power supply

SCv300 and SCv320 Expansion Enclosure EMM Features and Indicators

The SCv300 and SCv320 includes two enclosure management modules (EMMs) in two interface slots.

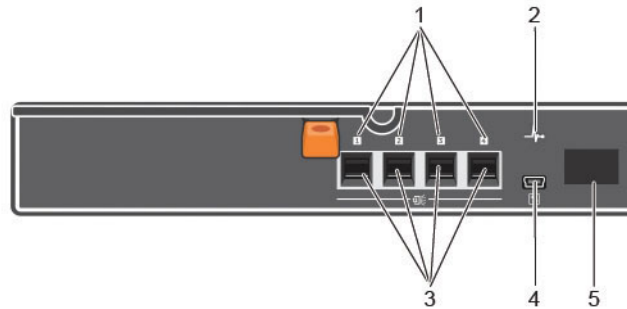


Figure 4. SCv300 and SCv320 Expansion Enclosure EMM Features and Indicators

Item	Name	Icon	Description
1	SAS port status (1–4)		<ul style="list-style-type: none"> Green: All the links to the port are connected Amber: One or more links are not connected Off: Expansion enclosure is not connected
2	EMM status indicator		<ul style="list-style-type: none"> On steady green: Normal operation Amber: Expansion enclosure did not boot or is not properly configured Blinking green: Automatic update in progress Blinking amber (two times per sequence): Expansion enclosure is unable to communicate with other expansion enclosures Blinking amber (four times per sequence): Firmware update failed Blinking amber (five times per sequence): Firmware versions are different between the two EMMs
3	SAS ports 1–4 (Input or Output)		Provides SAS connections for cabling the storage controller to the next expansion enclosure in the chain. (Single Port, Redundant, and Multi-chain Configuration).
4	USB Mini-B (serial debug port)		Not for customer use.
5	Unit ID display		Displays the enclosure ID.

EMM Failover

Control and monitoring of the expansion enclosure elements can be transferred from one EMM to another in the event of an EMM failure.

In the event of an EMM failure, the functioning EMM activates the amber status LED of the failed EMM. The functioning EMM then manages all aspects of the expansion enclosure, including monitoring and controlling the expansion enclosure LEDs, power supply units, and fans.

SCv300 and SCv320 Expansion Enclosure Drives

Dell Enterprise Plus hard disk drives (HDDs) and Dell Enterprise Plus solid-state drives (SSDs) are the only drives that can be installed in SCv300 and SCv320 expansion enclosures. If a non-Dell Enterprise Plus drive is installed, the Storage Center prevents the drive from being managed.

The drives in an SCv300 expansion enclosure are installed horizontally. The drives in an SCv320 expansion enclosure are installed vertically. The indicators on the drives provide status and activity information.



Figure 5. SCv300 and SCv320 Expansion Enclosure Drive Indicators

Item	Name	Indicator Code
1	Drive activity indicator	<ul style="list-style-type: none">• Blinking green: Drive activity• Steady green: Drive is detected and there are no faults
2	Drive status indicator	<ul style="list-style-type: none">• Steady green: Normal operation• Blinking green (two times per second): Drive identification is enabled• Blinking amber (three times per second): Hard disk drive failure• Off: No power to the drive

Replacing SCv300 and SCv320 Expansion Enclosure Components

This chapter describes how to remove and install components of the SCv300 and SCv320 expansion enclosure. This information assumes that you have received the replacement component and are ready to install it.

Safety Precautions

Always follow these safety precautions to avoid injury and damage to Storage Center equipment.

If equipment described in this guide is used in a manner not specified by Dell, the protection provided by the equipment could be impaired. For your safety and protection, observe the rules described in the following sections.

 **NOTE: See the safety and regulatory information that shipped with each Storage Center component. Warranty information is included as a separate document.**


Installation Safety Precautions

Follow these safety precautions when installing an SCv300 and SCv320 expansion enclosure:

- Dell recommends that only individuals with rack-mounting experience install an SCv300 and SCv320 expansion enclosure in a rack.
- The rack construction must support the total weight of the installed expansion enclosures. The design should incorporate stabilizing features suitable to prevent the rack from tipping or being pushed over during installation or in normal use.
- To prevent the rack from tipping, slide only one expansion enclosure out of the rack at a time.
- Make sure that the expansion enclosure is always fully grounded to prevent damage from electrostatic discharge.
- When handling the expansion enclosure components, use an electrostatic wrist guard or a similar form of protection.

Electrical Safety Precautions

Always follow electrical safety precautions to avoid injury and damage to Storage Center equipment.

 **WARNING: Disconnect power from the expansion enclosure when removing or installing components that are not hot-swappable. When disconnecting power, first power down the storage system using the storage client and then unplug the power cords from the power supplies in the storage system and expansion enclosure.**

- Provide a suitable power source with electrical overload protection. All Storage Center components must be grounded before applying power. Make sure that a safe electrical earth connection can be made to power supply cords. Check the grounding before applying power.
- The plugs on the power supply cords are used as the main disconnect device. Make sure that the socket outlets are located near the equipment and are easily accessible.
- Know the locations of the equipment power switches and the room's emergency power-off switch, disconnection switch, or electrical outlet.
- Do not work alone when working with high-voltage components.
- Use rubber mats specifically designed as electrical insulators.
- Do not remove covers from the power supply unit. Disconnect the power connection before removing a power supply from the expansion enclosure.
- Do not remove a faulty power supply unless you have a replacement model of the correct type ready for insertion.



- Unplug the expansion enclosure chassis before you move it or if you think it has become damaged in any way. When powered by multiple AC sources, disconnect all power sources for complete isolation.

Electrostatic Discharge Precautions

Always follow electrostatic discharge (ESD) precautions to avoid injury and damage to Storage Center equipment.

Electrostatic discharge (ESD) is generated by two objects with different electrical charges coming into contact with each other. The resulting electrical discharge can damage electronic components and printed circuit boards. Follow these guidelines to protect your equipment from ESD:

- Dell recommends that you always use a static mat and static strap while working on components in the interior of the chassis.
- Observe all conventional ESD precautions when handling plug-in modules and components.
- Use a suitable ESD wrist or ankle strap.
- Avoid contact with backplane components and module connectors.
- Keep all components and printed circuit boards (PCBs) in their antistatic bags until ready for use.

General Safety Precautions

Always follow general safety precautions to avoid injury and damage to Storage Center equipment.

- Keep the area around the expansion enclosure chassis clean and free of clutter.
- Place any system components that have been removed away from the expansion enclosure chassis or on a table so that they are not in the way of other people.
- While working on the expansion enclosure chassis, do not wear loose clothing such as neckties and unbuttoned shirt sleeves. These items can come into contact with electrical circuits or be pulled into a cooling fan.
- Remove any jewelry or metal objects from your body. These items are excellent metal conductors that can create short circuits and harm you if they come into contact with printed circuit boards or areas where power is present.
- Do not lift the expansion enclosure chassis by the handles of the power supply units (PSUs). They are not designed to hold the weight of the entire chassis, and the chassis cover could become bent.
- Before moving the expansion enclosure chassis, remove the PSUs to minimize weight.
- Do not remove drives until you are ready to replace them.



NOTE: To ensure proper expansion enclosure cooling, hard drive blanks must be installed in any hard drive slot that is not occupied.

Pre-Replacement Procedures

Perform the procedures described in this chapter before replacing a component of the SCv300 and SCv320 expansion enclosure.

Send Diagnostic Data Using Dell SupportAssist

Before replacing components, use Dell SupportAssist to send diagnostic data to Dell Technical Support Services.

1. Use Dell Storage Manager to connect to the Storage Center.
2. In the **Summary** tab, click **Send SupportAssist Information Now**, which is located under **SupportAssist Actions** in the **Status** pane.
The **Send SupportAssist Information Now** dialog box opens.
3. Select **Storage Center Configuration** and **Detailed Logs**.
4. Click **OK**.

Change the Operation Mode of the Storage Center to Maintenance

Change the operation mode of the Storage Center to Maintenance before replacing components.

1. Use Dell Storage Manager to connect to the Storage Center.
2. In the **Summary** tab, click **Edit Settings**. The **Edit Storage Center Settings** dialog box opens.

3. Click the **General** tab.
4. In the **Operation Mode** field select **Maintenance**. Selecting **Maintenance** isolates alerts from those that would occur during normal operation.
5. Click **OK**.

Replacing the Front Bezel

The front bezel is a cover for the front panel of the expansion enclosure.

About this task

The front bezel must be removed from the front panel when replacing hard drives.

Steps

1. Use the system key to unlock the keylock at the left end of the bezel.
2. Lift the release latch next to the keylock.
3. Rotate the left end of the bezel away from the front panel.
4. Unhook the right end of the bezel and pull the bezel away from the expansion enclosure.

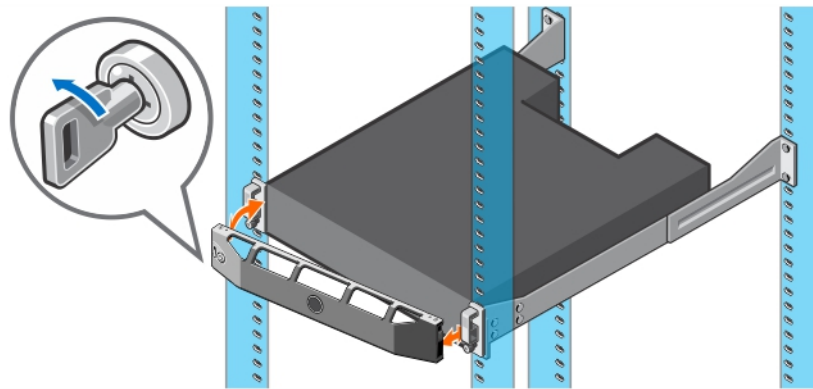


Figure 6. Replacing the Front Bezel

5. Hook the right end of the replacement bezel onto the front panel of the expansion enclosure.
6. Insert the left end of the bezel into the securing slot until the release latch locks into place.
7. Secure the bezel with the keylock.

Replacing Hard Drives

The SCv300 and SCv320 expansion enclosures support hot-swappable hard drives.

The SCv300 expansion enclosure supports up to 12 3.5-inch hard drives installed in a four-column, three-row configuration. The SCv320 expansion enclosure supports up to 24 2.5-inch hard drives installed vertically side-by-side. Hard drives are connected to a backplane through hard drive carriers. Hard drive blanks are installed in the hard drive bays that are not occupied.

 **NOTE: One spare drive is allocated for every 20 drives in the expansion enclosure.**

SCv300 and SCv320 Expansion Enclosure Drive Numbering

Drives are numbered from left to right in the SCv300 and SCv320 expansion enclosure.

The Storage Center identifies drives as $XX-YY$, where XX is the unit ID of the expansion enclosure, and YY is the drive position inside the expansion enclosure.

- The SCv300 holds up to 12 drives, which are numbered from left to right in rows starting from 0 at the top-left drive.



Figure 7. SCv300 Drive Numbering

The SCv320 holds up to 24 drives, which are numbered from left to right starting from 0.

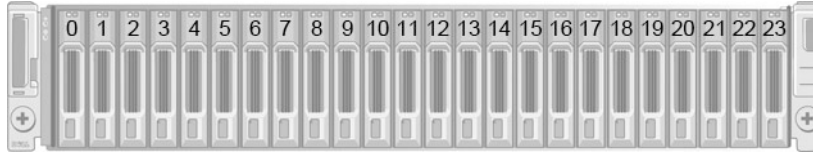


Figure 8. SCv320 Drive Numbering

Identify the Failed Hard Drive

To determine which hard drive failed, use the Dell Storage Manager Client.

1. Use the Dell Storage Manager Client to connect to the Storage Center.
2. Click the **Hardware** tab.
3. In the **Hardware** tab navigation pane, select the Storage Center.
4. In the **Hardware Alerts** area, find the hardware alert that identifies the expansion enclosure with the failed hard drive.

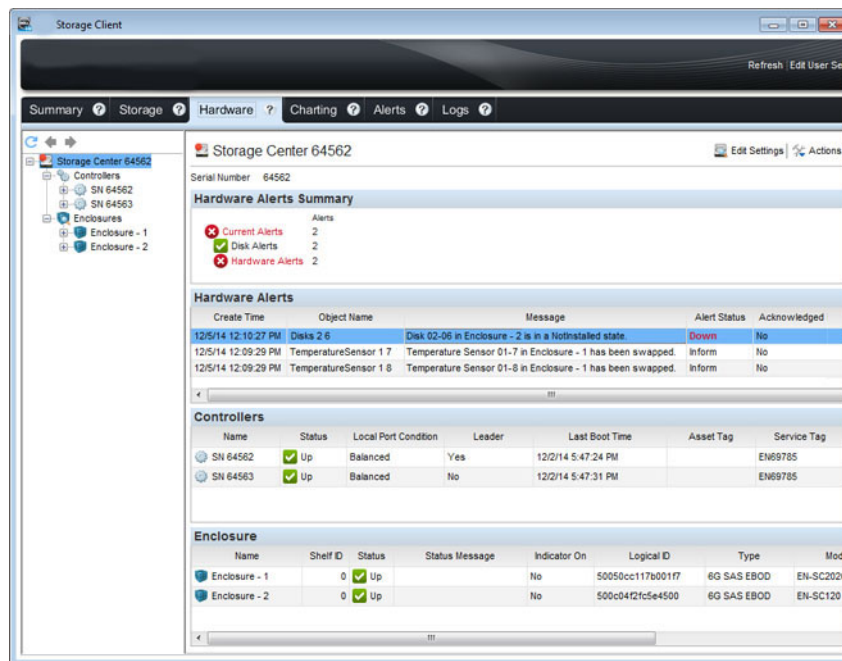


Figure 9. Hardware Alert Identifying the Expansion Enclosure with the Failed Hard Drive

5. In the **Hardware** tab navigation pane, expand the expansion enclosure identified in the previous step.
6. Select **Disks**. The status of each hard drive is displayed in the **Disks** tab.
7. Select the failed hard drive. The location of the failed hard drive is displayed in the **Disk View** tab.

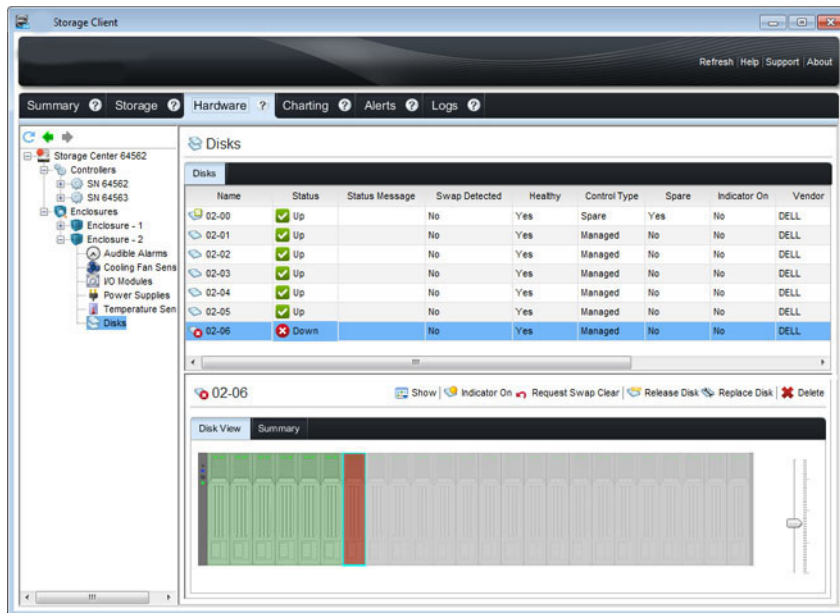


Figure 10. Front View of the Expansion Enclosure Showing the Failed Hard Drive

Replace a Hard Drive

Use this procedure to replace a failed hard drive.

Prerequisite

Use SupportAssist to send diagnostic data to Dell Technical Support Services.

About this task

Hard drives can be replaced without shutting down the expansion enclosure.

CAUTION: To prevent a storage system reset, at least one powered drive must remain installed in the primary chassis when multiple drives are replaced.

Steps

1. Remove the front bezel.
A solid amber LED is lit on the failed hard drive.
2. Press the release button to open the hard drive carrier release handle.
3. Slide the hard drive out until it is free of the hard drive slot.

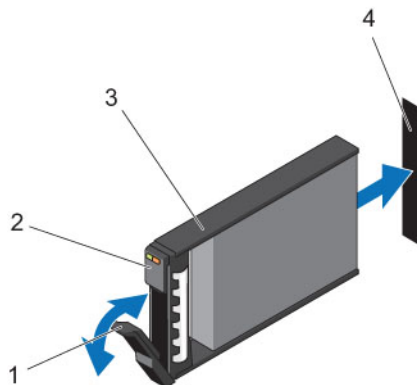


Figure 11. Replacing a Hard Drive

1. Hard drive carrier release handle
2. Hard drive indicators


3. Hard drive carrier

4. Hard drive slot

4. Press the release button on the replacement hard drive to open the hard drive carrier release handle.

 **NOTE: Hold the hard drive by the plastic part of the hard drive carrier or the handle.**

5. Insert the hard drive carrier into the hard drive slot until the carrier make contact with the backplane.

 **CAUTION: Do not remove the hard drive blanks that are installed in hard drive slots that are not occupied. The hard drive blanks ensure proper cooling of the expansion enclosure.**

6. Close the hard drive carrier handle to lock the hard drive in place.

 **NOTE: Allow several seconds for the expansion enclosure to recognize the hard drive and determine its status.**

7. Replace the front bezel.

8. In Storage Manager, make sure that the replacement hard drive is recognized and shown as up and healthy.

Next step

Use SupportAssist to send diagnostic data to Dell Technical Support Services.

Installing Hard Drives in an SCv300 and SCv320 Expansion Enclosure

An SCv300 and SCv320 expansion enclosure is shipped with drives installed and empty drive blanks are inserted in the unused slots.

About this task

The following instructions describe the installation of Dell Enterprise hard drives for reference only.

Steps

1. Open the hard drive carrier handle and insert the hard drive carrier into the hard drive slot.
Start on the left side of the expansion enclosure with slot 0 and install drives from left to right.
2. Slide the drive into the slot until the hard drive carrier contacts the backplane.

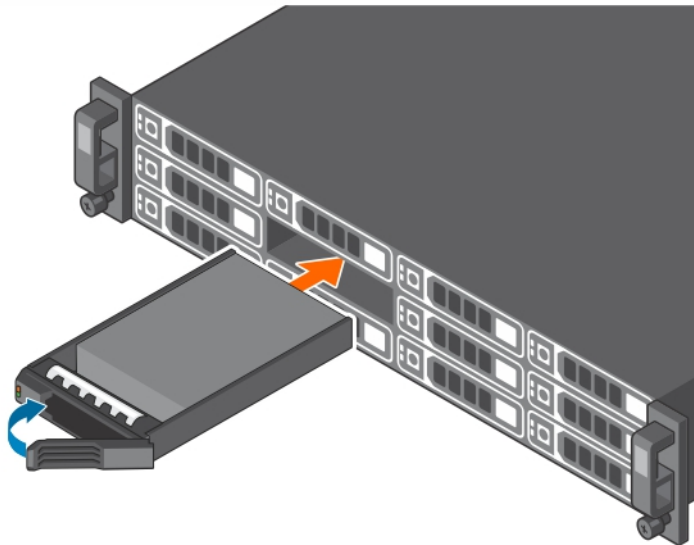


Figure 12. Installing Dell Enterprise Hard Drives in an SCv300

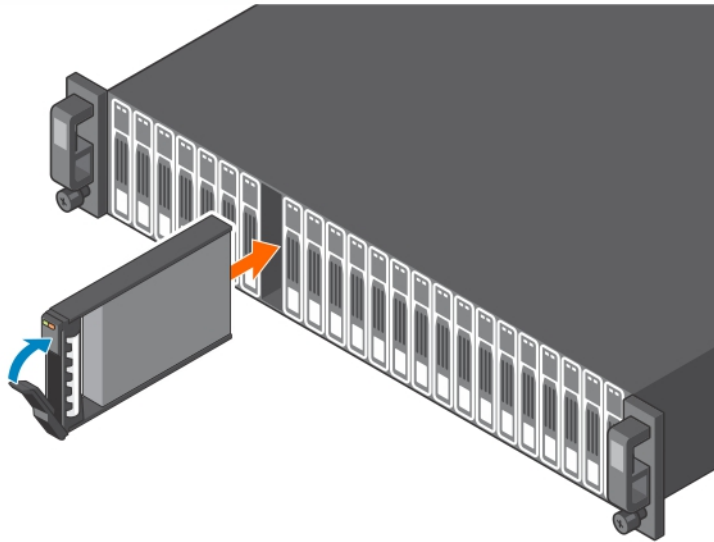


Figure 13. Installing Dell Enterprise Hard Drives in an SCv320

3. Close the hard drive carrier handle to lock the hard drive in place.
4. Continue to push firmly until you hear a click and the hard drive carrier handle fully engages.
5. Insert drive blanks into any open slots in the expansion enclosure.
All the drive slots in the expansion enclosure must be filled with a drive or drive blank.

Replacing Rack Rails

Rack rails are used to install SCv300 and SCv320 expansion enclosures into a rack.

Prerequisites

1. Use SupportAssist to send diagnostic data to .
2. Change the operation mode of the Storage Center to Maintenance.

About this task

NOTE: Replacing rack rails must be performed during a scheduled maintenance window when the Storage Center is unavailable to the network.

Steps

1. Shut down the storage system and the expansion enclosure.
2. Disconnect the power cables and SAS cables from the expansion enclosure.
3. Remove the expansion enclosure from the rack rails.
4. Remove the rack rails from the rack.
5. Install the replacement rack rails in the rack.
6. Install the expansion enclosure in the rack rails.
7. Reconnect the power cables and SAS cables to the expansion enclosure.
8. Start up the storage system and the expansion enclosure.

Next steps

1. Change the operation mode of the Storage Center to Normal.
2. Use SupportAssist to send diagnostic data to Dell Technical Support Services.



Post-Replacement Procedures

Perform the procedures described in this section after replacing a component of an SCv300 and SCv320 expansion enclosure.

Send Diagnostic Data Using Dell SupportAssist

After replacing components, use Dell SupportAssist to send diagnostic data to Dell Technical Support Services.

1. Use Dell Storage Manager to connect to the Storage Center.
2. In the **Summary** tab, click **Send SupportAssist Information Now**, which is located under **SupportAssist Actions** in the **Status** pane.
The **Send SupportAssist Information Now** dialog box opens.
3. Select **Storage Center Configuration** and **Detailed Logs**.
4. Click **OK**.

Change the Operation Mode of the Storage Center to Normal

Change the operation mode of the Storage Center to Normal after replacing components.

1. Use Dell Storage Manager to connect to the Storage Center.
2. In the **Summary** tab, click **Edit Settings**. The **Edit Storage Center Settings** dialog box opens.
3. Click the **General** tab.
4. In the **Operation Mode** field select **Normal**.
5. Click **OK**.

Troubleshooting SCv300 and SCv320 Components

This section contains basic troubleshooting steps for components inside the SCv300 and SCv320 expansion enclosures.

Troubleshooting Power Supply/Cooling Fan Modules

Use these steps to troubleshoot power supply/cooling fan modules.

1. Check the status of the power supply/cooling fan module using the Dell Storage Manager.
2. Determine the status of the power supply/cooling fan module LEDs.
 - If the power supply/cooling fan module fault indicator is lit, the power supply/cooling fan has failed.
 - If the AC power LED is not lit, check the power cord and power source into which the power supply is plugged:
 - Connect another device to the power source and check whether the device works.
 - Connect the power cord to a different power source.
 - Replace the power cord.
3. Reseat the power supply/cooling fan module by removing and reinstalling it.



NOTE: Allow several seconds for the expansion enclosure to recognize the power supply/cooling fan module and determine its status.

Troubleshooting Hard Drives

Use these steps to troubleshoot hard drives.

1. Check the status of the hard drive using the Dell Storage Manager.
2. Determine the status of the hard drive LEDs.
 - If the hard drive status LED blinks amber four times per second, the hard drive has failed.
 - If the hard drive status LED is not lit, proceed to the next step.
3. Check the connectors and reseat the hard drive.
 - a. Remove the hard drive.
 - b. Check the hard drive and the backplane to ensure that the connectors are not damaged.
 - c. Reinstall the hard drive. Make sure the hard drive contacts the backplane.

Troubleshooting Enclosure Management Modules

Use these steps to troubleshoot EMMs.

1. Check the status of the EMM using the Dell Storage Manager.
2. Check the pins and reseat the EMM.
 - a. Remove the EMM.
 - b. Verify that the pins on the backplane and the EMM are not bent.
 - c. Reinstall the EMM.
3. Determine the status of the EMM link status LEDs. If the LEDs are not green, check the cables.
 - a. Reseat the cables on the expansion enclosure and the storage system.
 - b. Recheck the link status LEDs. If the link status LEDs are not green, replace the cables.



Troubleshooting the Control Panel

Use these steps to troubleshoot the control panel.



1. Determine the status of the control panel LEDs. If the LEDs are not lit, and the enclosure is powered on, the control panel has failed.
2. Reseat the control panel by removing and reinstalling it.

 **CAUTION: The storage system and expansion enclosures must be shut down before reseating the control panel.**

SCv300 and SCv320 Expansion Enclosure Technical Specifications

Technical Specifications

The technical specifications of the SCv300 and SCv320 expansion enclosures are displayed in the following tables.

Drives	
SAS hard drives	<p>SCv300: Up to 12 hot-swappable 3.5-inch 12 Gbps SAS hard drives or SAS solid state drives (SSDs)</p> <p>SCv320: Up to 24 hot-swappable 2.5-inch 12 Gbps SAS hard drives or SAS solid state drives (SSDs)</p> <p> NOTE: SCv300 and SCv320 expansion enclosures support self-encrypting drives (SEDs).</p>
Enclosure Management Modules (EMMs)	
EMMs	Two hot-swappable IO modules
Redundant Array of Independent Disks (RAID)	
Controller	Two hot-swappable storage controllers
Management	RAID management using Dell Storage Manager
Back-Panel Connectors (per EMM)	
SAS connectors	Four mini-SAS HD connectors for connecting an expansion enclosure to a storage system.
	 NOTE: SAS connectors are SFF-8086/SFF-8088 compliant.
LED Indicators	
Front panel	<ul style="list-style-type: none"> One two-color LED indicator for system status One single-color LED indicator for power status
Hard-drive carrier	<ul style="list-style-type: none"> One single-color activity LED One two-color LED status indicator per drive
Power supply/cooling fan	Three LED status indicators for power supply status, power supply module status, and AC status
Power Supplies	
AC power supply (per power supply)	
Wattage	600 W
Voltage	100–240 VAC (8.6–4.3 A), autoranging, 50/60 Hz



Power Supplies

Heat dissipation AC – 2047 BTU/hr

Available Hard Drive Power (per Slot)

Supported hard drive power consumption (continuous) Up to 1.2 A at +5 V, up to 0.5 A at +12 V

Physical

Height 8.7 cm (3.43 in.)


Width 48.2 cm (18.98 in.)

Depth **SCv300:** 59.4 cm (23.39 in.)
SCv320: 54.1 cm (21.3 in.)

Weight (maximum configuration) **SCv300:** 28.59 kg (63.03 lb)
SCv320: 24.2 kg (53.35 lb)


Weight without drives **SCv300:** 9.0 kg (19.84 lb)
SCv320: 8.8 kg (19.4 lb)

Environmental

 **NOTE: For additional information about environmental measurements for specific configurations, see the [Product Safety, EMC and Environmental Datasheets](#) website.**

Temperature

Operating **SCv300:** 5° to 35°C (41° to 95°F) with a maximum temperature gradation of 10°C (18°F) per hour
SCv320: 10° to 35°C (50° to 95°F) with a maximum temperature gradation of 10°C (18°F) per hour

 **NOTE: For altitudes above 900 m (2950 ft), the maximum operating temperature is derated 0.56°C (1°F) per 168 m (550 ft).**

Storage –40° to 65°C (–40° to 149°F) with a maximum temperature gradation of 20°C (36°F) per hour


Relative humidity

Operating 8% to 85% (noncondensing) with a maximum humidity gradation of 10% per hour

Storage 5% to 95% (noncondensing)

Altitude

Operating –16 to 3048 m (–50 to 10,000 ft)

 **NOTE: For altitudes above 900 m (2950 ft), the maximum operating temperature is derated 0.56°C (1°F) per 168 m (550 ft).**

Storage –16 to 10,600 m (–50 to 35,000 ft)

Free Manuals Download Website

<http://myh66.com>

<http://usermanuals.us>

<http://www.somanuals.com>

<http://www.4manuals.cc>

<http://www.manual-lib.com>

<http://www.404manual.com>

<http://www.luxmanual.com>

<http://aubethermostatmanual.com>

Golf course search by state

<http://golfingnear.com>

Email search by domain

<http://emailbydomain.com>

Auto manuals search

<http://auto.somanuals.com>

TV manuals search

<http://tv.somanuals.com>