

1. Disassembly Procedures

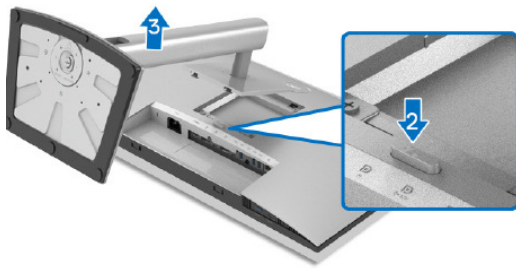
S1 Turn off power

S2 To remove the stand

Place the monitor on a soft cloth or cushion

Press and hold the stand release button

Lift the stand up and away from the monitor



S3 Unlock 4 screws on Rear Cover

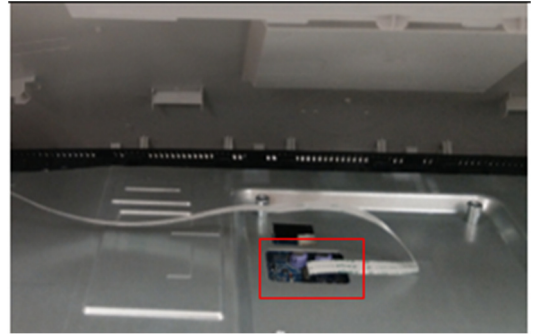
Use hands or scraper bar to disassemble Rear Cover from monitor

Notice the disassembly order:
Top Side=>Right/ Left Side=>Bottom Side



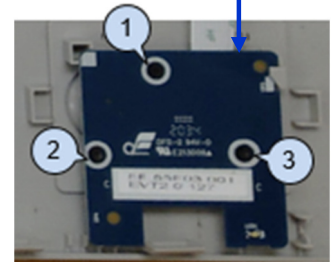
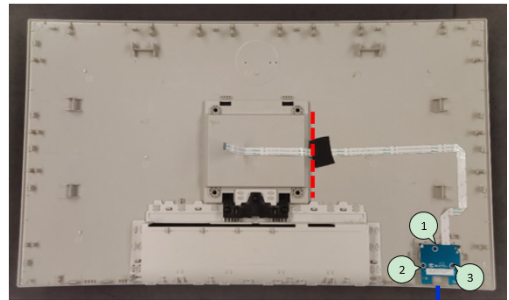
(Screw Torque: 8-10Kgf)

S4 Pull out CTRL BD FFC from I/F BD and tear off it from Main SHD to take off Rear Cover



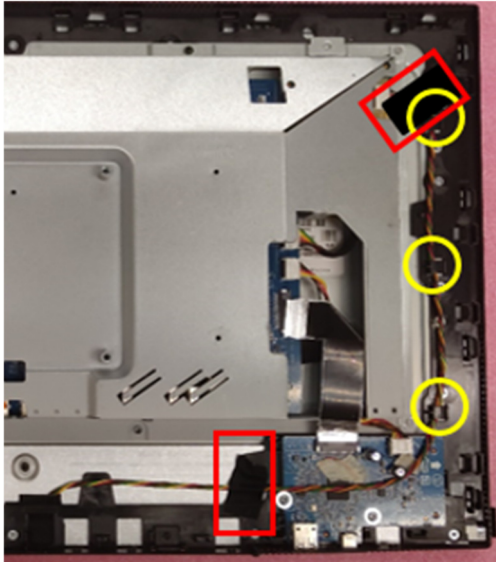
S5 Tear off a tape from CTRL BD FFC and Rear Cover

Unlock screw*3 to disassemble CTRL BD from Rear Cover



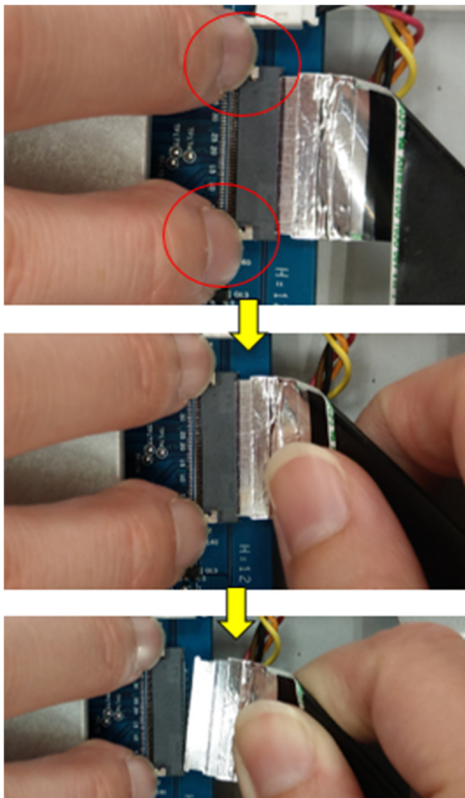
(Screw Torque: 0.9-1.0Kgf)

- S6** Tear off 2 tapes from Backlight wire
- Pull out Backlight wire from LED Driver BD

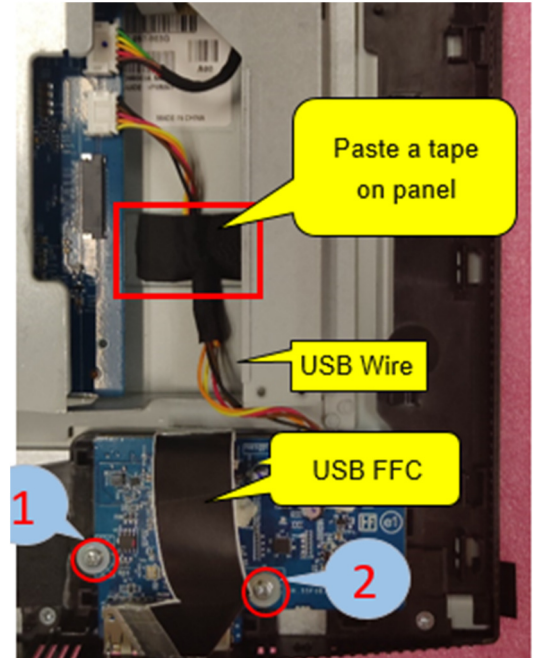


- S7** Press on the lock of connector to disassemble USB FFC from I/F BD

Attention:
 USB FFC may be damaged if you pull out it from I/F BD directly without pressing the lock



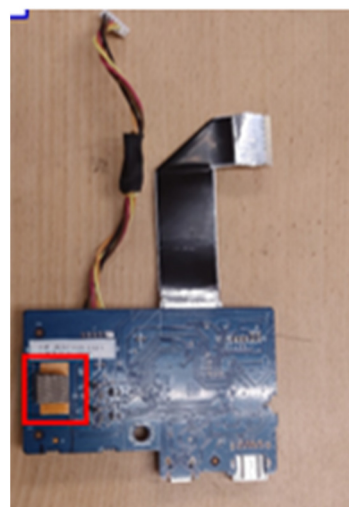
- S8** Tear off a tape from USB wire
- Pull out USB wire from I/F BD
- Unlock 2 screws to disassemble USB BD from Middle Frame



(Screw Torque: 4.5±0.5Kgf)

- S9** Pull out USB wire and USB FFC from USB BD

Take off gasket from USB BD

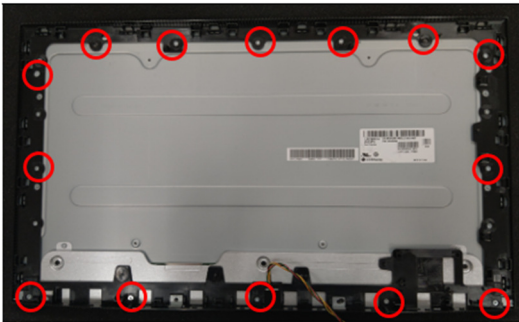


- S10** Disassemble LVDS FFC cable from Panel

Take off Main SHD from panel



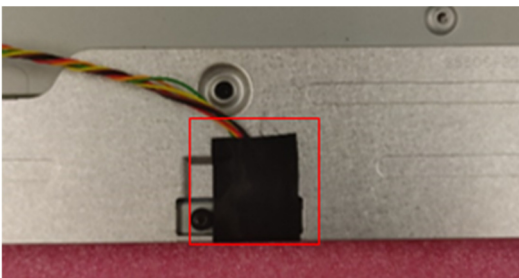
- S11** Unlock 14 screws to disassemble Middle Frame



(Screw Torque: 5.0 ± 0.5 Kgf)

- S12** Tear off a tape from Backlight wire and panel

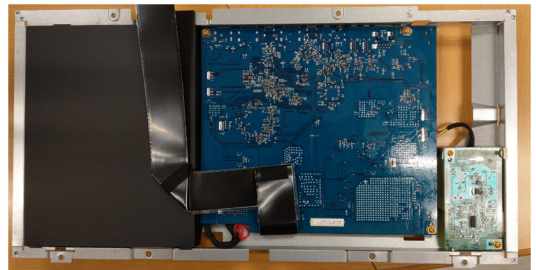
Pull out Backlight wire from panel



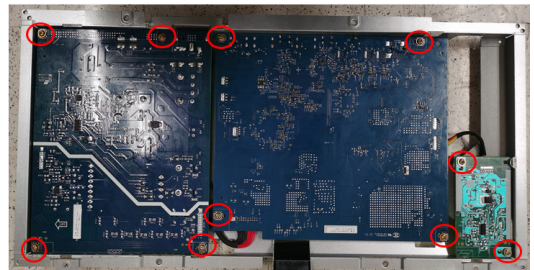
- S13** Disassemble 5 plastic BOSS from panel



- S14** Disassemble mylar from Main SHD

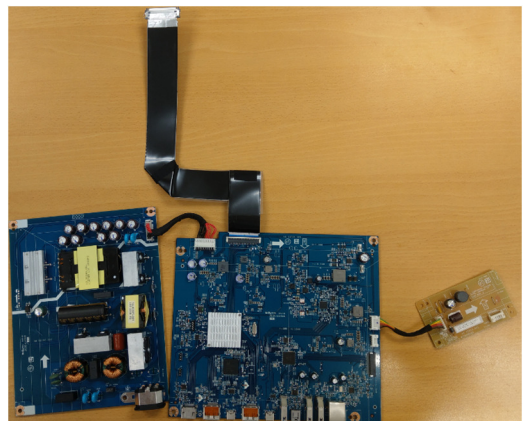


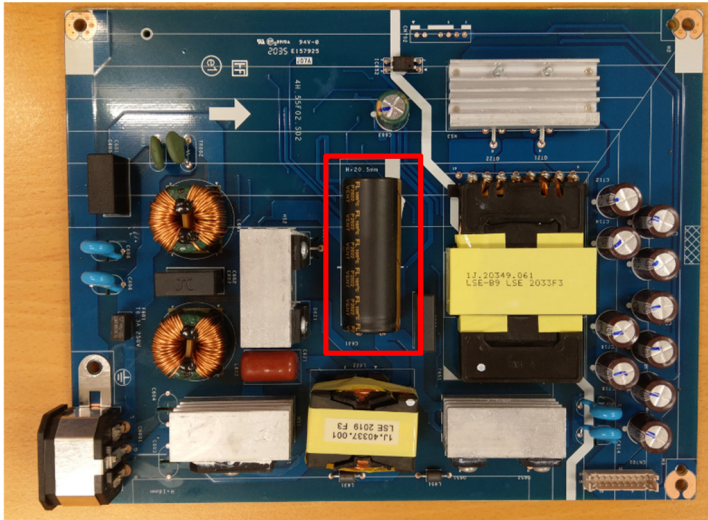
- S15** Unlock 10 PCBA screws to disassemble I/F BD, SPS BD and LED Driver BD from Main SHD



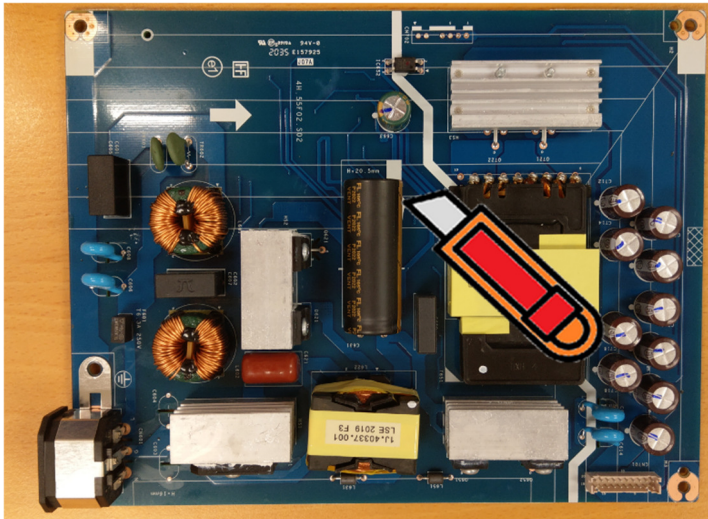
(Screw Torque: 8.5 ± 1 Kgf)

- S16** Remove all cables from I/F BD, SPS BD and LED Driver BD

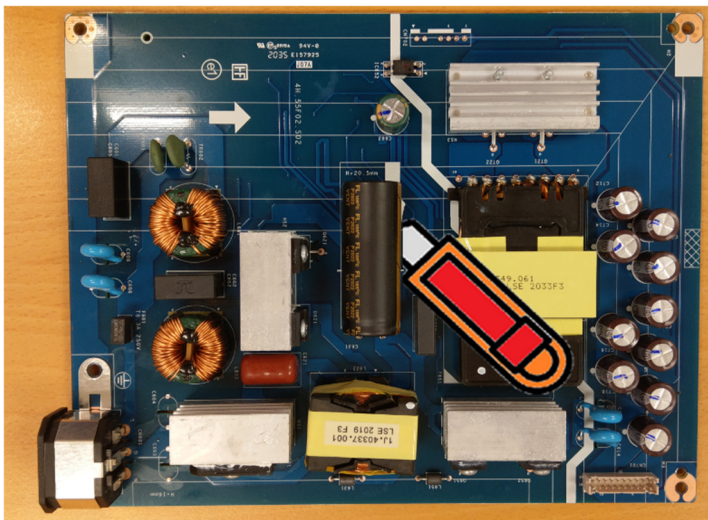


S17 Remove electrolyte capacitors (red mark) from printed circuit boards

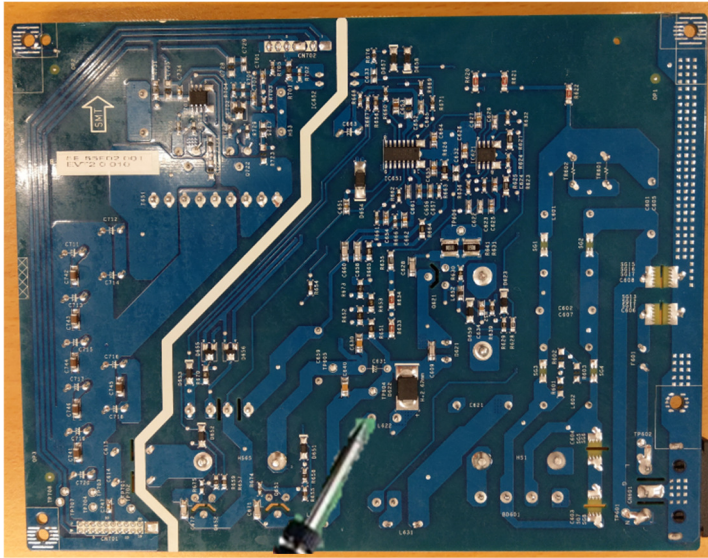
S17-1 Cut the glue between bulk cap. and PCB with a knife



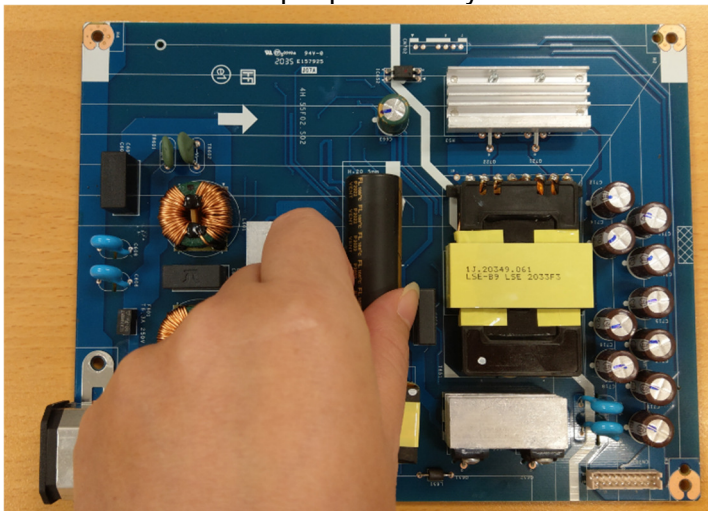
S17-2 Ensure cutting path within the glue, don't touch bulk cap. or PCB



S17-3 Take out bulk cap. pin solder with soldering iron and absorber



S17-4 Lift the bulk cap. up and away from the PCB



2. Product material information

The following substances, preparations, or components should be disposed of or recovered separately from other WEEE in compliance with Article 4 of EU Council Directive 75/442/EEC.

Capacitors / condensers (containing PCB/PCT)	No used
Mercury containing components	No used
Batteries	No used
Printed circuit boards (with a surface greater than 10 square cm)	Product has printed circuit boards (with a surface greater than 10 square cm)
Component contain toner, ink and liquids	No used
Plastic containing BFR	No used
Component and waste contain asbestos	No used
CRT	No used
Component contain CFC, HCFC, HFC and HC	No used
Gas discharge lamps	No used
LCD display > 100 cm ²	Product has an LCD greater than 100 cm ²
External electric cable	Product has external cables
Component contain refractory ceramic fibers	No used
Component contain radio-active substances	No used
Electrolyte capacitors (height > 25mm, diameter > 25mm)	Product has electrolyte capacitors (height >25mm, diameter > 25mm)

3. Tools Required

List the type and size of the tools that would typically can be used to disassemble the product to a point where components and materials requiring selective treatment can be removed.

Tool Description:

- Screwdriver
- Penknife
- Bar scraper

Free Manuals Download Website

<http://myh66.com>

<http://usermanuals.us>

<http://www.somanuals.com>

<http://www.4manuals.cc>

<http://www.manual-lib.com>

<http://www.404manual.com>

<http://www.luxmanual.com>

<http://aubethermostatmanual.com>

Golf course search by state

<http://golfingnear.com>

Email search by domain

<http://emailbydomain.com>

Auto manuals search

<http://auto.somanuals.com>

TV manuals search

<http://tv.somanuals.com>