

User manual

Dishwasher



Contents

Safety information	2	Care and cleaning	8
Control panel	3	What to do if...	9
Washing programmes	4	Technical data	11
Use of the appliance	4	Environment concerns	11
Use of rinse aid	5	Installation	11
Loading cutlery and dishes	5	Water connection	12
Use of detergent	7	Electrical connection	13
Select and start a washing program	8	Warranty	13

Subject to change without notice



Safety information

i For your safety and correct operation of the appliance, read this manual carefully before installation and use. Always keep these instructions with the appliance even if you move or sell it. Users must fully know the operation and safety features of the appliance.

Correct use

- Only use the appliance to clean household utensils that are suitable for dishwashers.
- Do not put solvents in the appliance. Risk of explosion.
- Put the knives and all items with sharp points in the cutlery basket with their points down. If not, put them in a horizontal position in the upper basket.
- Use only products specified for dishwashers (detergent, salt, rinse aid).
- If you open the door while the appliance is in operation, hot steam can escape. Risk of skin burns.
- Do not remove dishes from the dishwasher before the end of the washing program.
- When the washing program is completed, disconnect the mains plug from the mains socket and close the water tap.
- Only an authorised service engineer can repair this appliance. Use only original spare parts.
- Do not do repairs yourself to prevent injury and damage to the appliance. Always contact the Customer Care Centre.

General safety

- Dishwasher detergents are very dangerous. Be careful they do not touch eyes, mouth and skin. Keep

the children away from the appliance when the door is open.

- Obey the safety instructions from the manufacturer of the dishwasher detergent to prevent burns to eyes, mouth and throat.
- Only put detergent in the dispenser before you start a washing program. Make sure that the detergent dispenser is empty at the end of the washing program.
- Do not drink the water from the dishwasher. Detergent residues can stay in your appliance.
- Always close the door when you do not use the appliance to prevent injury and not to stumble over the open door.
- Do not sit or stand on the open door.

Child safety

- Children or infirm persons must not use this appliance. They must get supervision to make sure that they do not play with the appliance.
- Keep all the packaging away from children. There is a risk of suffocation.
- Keep all detergents in a safe area. Do not let children touch the detergents.
- Keep the children and pets away from the appliance when the door is open.


Installation

- Make sure that the appliance is not damaged because of transport. Do not connect a damaged appliance. If necessary, contact the supplier.
- Remove all packaging before first use.
- A qualified and competent person must do the electrical installation.

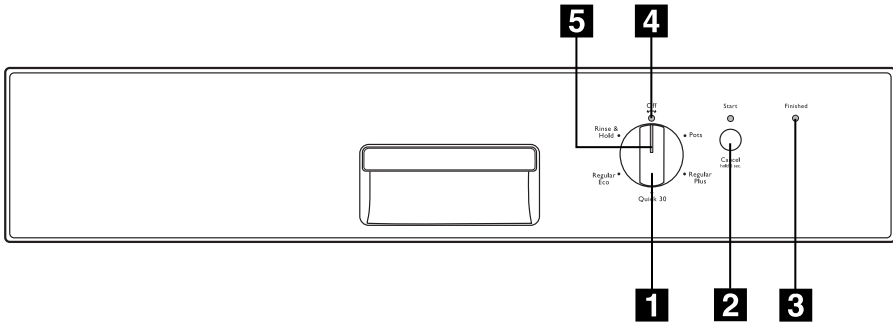
- A qualified and competent person must do the plumbing installation.
- Do not change the specifications or modify this product. Risk of injury and damage to the appliance.
- Do not use the appliance:
 - if the mains cable or water hoses are damaged,
 - if the control panel, worktop or plinth area are damaged so that you can get access to the inner side of the appliance.

Contact your local Customer Care Centre.

- Do not drill into the sides of the appliance otherwise damage to hydraulic and electrical components may occur.

 **Warning!** Carefully obey the instructions for electrical and water connections.

Control panel



- 1** Program knob
- 2** Start/cancel button
- 3** Indicator light 'Finished'
- 4** On/off indicator light
- 5** Program marker

Indicator lights

Finished

Comes on when the washing program is completed. It also has the auxiliary functions of alarm if the appliance has a malfunction.

Program knob and on/off indicator light

- To set a washing program, turn the program knob clockwise or anticlockwise. The program marker on the program knob must agree with one of the wash-program on the control panel.
 - The on/off indicator light comes on (position ON).
- To set the appliance to the off position, turn the program knob until the program marker agrees with the on/off indicator light.
 - The on/off indicator light goes off (position OFF).

Washing programmes


Program	Degree of soil	Type of load	Program description
Pots	Heavy soil	Crockery, cutlery, pots and pans	Prewash Main wash up to 70°C 2 intermediate rinses Final rinse Drying
Regular Plus	Normal soil	Crockery and cutlery	Prewash Main wash up to 65°C 2 intermediate rinses Final rinse Drying
Quick 30 ¹⁾	Normal or light soil	Crockery and cutlery (Partial load)	Main wash up to 65°C Final rinse
Regular Eco ²⁾	Normal soil	Crockery and cutlery	Prewash Main wash up to 50°C 1 intermediate rinse Final rinse Drying
Rinse & Hold	Any	Partial load (to be completed later in the day).	1 cold rinse (to prevent food scraps to bond). Detergent is not necessary with this program.

1) This is the perfect daily program to clean a partial load. Ideal for a family of 4 persons who only want to load breakfast and dinner crockery and cutlery.

2) Test program for test institutes. Please refer to separate leaflet supplied, for test data.

Consumption values

Program	Duration (in minutes)	Energy (in kWh)	Water (in litres)
Pots	85 - 95	1,8 - 2,0	22 - 25
Regular Plus	100 - 115	1,5 - 1,7	23 - 25
Quick 30	30	0,9	9
Regular Eco	90 - 100	0,83 - 0,91	16 - 18
Rinse & Hold	12	0,1	5

 The pressure and temperature of the water, the variations of power supply and the quantity of dishes can change these values.

Use of the appliance

Refer to specified instructions for each step of the procedure.

1. Fill the rinse aid dispenser with rinse aid.
2. Load cutlery and dishes into the dishwasher.

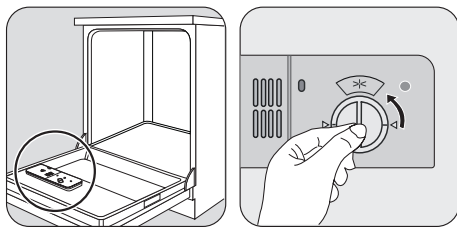
3. Set the correct washing program for the type of load and soil.
4. Fill the detergent dispenser with the correct quantity of detergent.

5. Start the washing program.

Use of rinse aid

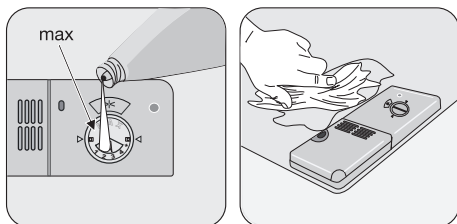
Caution! Only use rinse aid specified for dishwashers.

Follow these steps to fill the rinse aid dispenser:



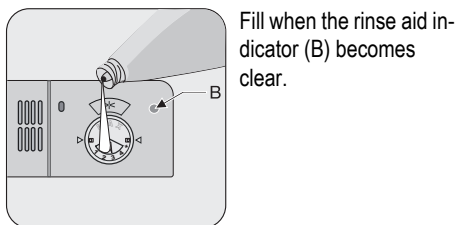
1

2



3

4

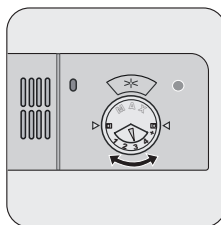


5

Fill when the rinse aid indicator (B) becomes clear.

Caution! Do not fill the rinse aid dispenser with other products (e.g. dishwasher cleaning agent, liquid detergent). There can cause damage to the appliance.

Adjusting the rinse aid dosage



The rinse aid is set at the factory at position 3. To increase or decrease the dosage refer to 'What to do if...'

i Wash hands to remove any residue of rinse aid from skin.

Loading cutlery and dishes

Helpful hints and tips

Caution! Only use the appliance for household utensils that are suitable for dishwashers.

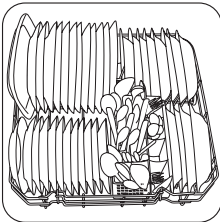
Do not use the appliance to clean objects that can absorb water (sponges, household cloths, etc.).

- Before you load cutlery and dishes, do these steps:
 - Remove all food remainings and debris.
 - Make burnt, remaining food in pans soft.

- While you load cutlery and dishes, do these steps:
 - Load hollow items (e.g. cups, glasses and pans) with the opening down.
 - Make sure that water does not collect in the container or in a deep base.
 - Make sure that cutlery and dishes do not lie inside one another.
 - Make sure that cutlery and dishes do not cover other cutlery and dishes.
 - Make sure that glasses do not touch other glasses.
 - Put small objects in the cutlery basket.
- Plastic items and pans with non-stick coatings can retain water droplets. Plastic items do not dry as well as porcelain and steel items.
- Put light items in the upper basket. Make sure that the items do not move.

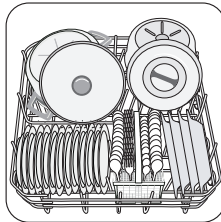
! **Caution!** Make sure that the spray arms can move freely before you start a washing program.

! **Warning!** Always close the door after you load or unload the appliance. An open door can be dangerous.

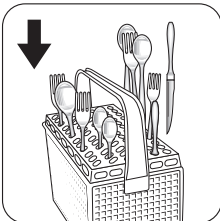


1

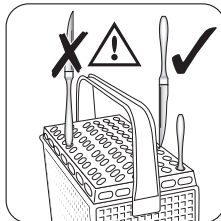
Arrange service dishes and large lids around the edge of the lower basket.



2

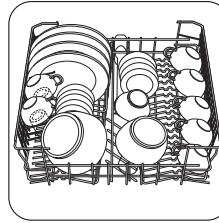


1



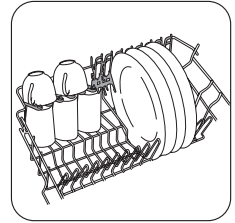
2

Use the cutlery grid for best washing results. If the dimensions of the cutlery prevent use of the cutlery grid, remove it.



1

Arrange the items to let water touch all surfaces.



2

For longer items, fold the cup racks up.

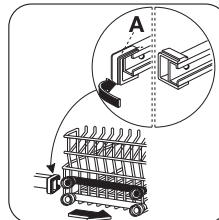
i Prevent to put plates in the first three sectors in the front part of the basket. Make sure the plates tilt forward.

Adjustment of the height of the upper basket

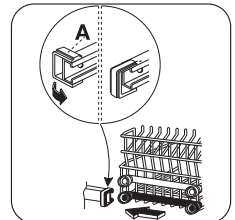
If you put large plates in the lower basket, first move the upper basket to an upper position.

! **Warning!** Adjust the height before you load the upper basket.

	Maximum height of the dishes in :	
	upper basket	lower basket
Upper position	20 cm	31 cm
Lower position	24 cm	27 cm



1



2

Follow these steps to move the upper basket to the upper or lower position:

1. Move the front runner stops (A) out.
2. Pull the basket out.
3. Put the basket in the upper or lower position.

4. Replace the front runner stops (A) in their initial position.

! **Caution!** If the basket is in the upper position, do not put cups on the cup racks.

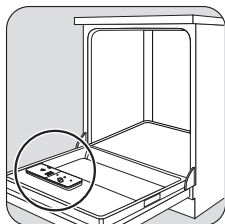
Use of detergent

i Only use detergents (powder, liquid or tablet) that are suitable for dishwashers.

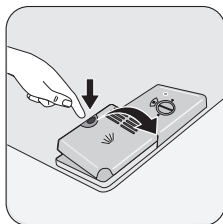
Follow the data on the packaging:

- dosage recommended by the manufacturer,
- storage recommendations.

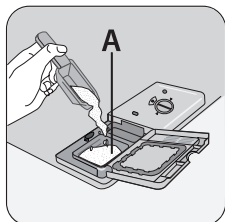
🌿 Do not use more than the correct quantity of detergent to decrease pollution.



1

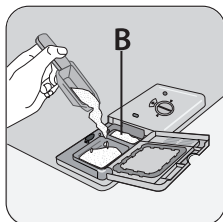


2



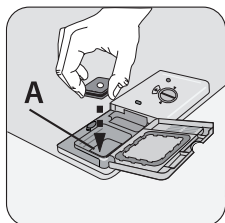
3

Fill the detergent dispenser (A) with detergent.

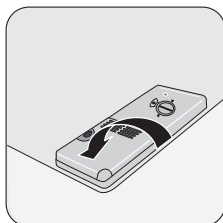


4

If you use a washing program with prewash phase, put more detergent in the prewash detergent compartment (B).



5



6

i Different brands of detergent dissolve in different times. Some detergent tablets do not have the best cleaning results during short washing programs. Use long washing programs when you use detergent tablets to fully remove the detergent.

Use of combi detergent tablets

These products are detergents with a combined cleaning and rinsing functions. They can contain also other cleaning agents.

Refer to the instructions from the manufacturer for the use of these products.

With tablets that contain rinse aid:

- set the lowest position for the rinse aid dosage,
- do not put rinse aid in the rinse aid dispenser. In this condition rinse aid indicator light is always on when you switch on the appliance.

Do these steps if the drying results are not satisfactory:

1. Fill the rinse aid dispenser with rinse aid.
2. Set the rinse aid dosage to position 2.

i If you go back to use normal detergents again, fill the rinse aid dispenser and adjust the rinse aid dosage.

Select and start a washing program

Do these steps to set and start a washing program:

1. Close the door.
2. Turn the program knob to set the washing program. Refer to the chapter 'Washing programs'.
 - The on/off indicator light comes on.
3. Press the start/cancel button.
 - The washing program starts automatically.
 - The start/cancel indicator light comes on.

i When the washing program operates, you cannot change the program. Cancel the washing program.

! **Warning! Only interrupt or cancel a washing program if necessary.**

Attention! Open the door carefully. Hot steam and water can escape.

Cancelling a washing program

- Press and hold the start/cancel button until the start/cancel indicator light goes off. The washing program is cancelled. At this time you can do these steps:
 1. Switch off the appliance.
 2. Set a new washing program.

Care and cleaning

! **Warning!** Switch the appliance off before you clean it.

Cleaning the filters

Important! Do not use the appliance without the filters. Make sure that the installation of the filters is correct. Incorrect installation will cause unsatisfactory washing results and damage to the appliance.

Fill the detergent dispenser with detergent before you set a new washing program.

Interrupting a washing program

Open the door.

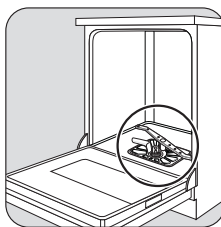
- The program stops.
- Close the door.
- The program continues from the point of interruption.

End of the washing program

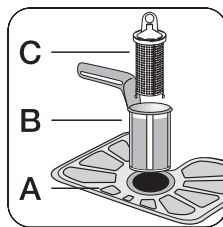
- The appliance stops automatically.
 - The 'Finished' indicator light comes on.
1. Switch off the appliance.
 2. Open the door.
 3. For better drying results, keep the door ajar for some minutes before you remove the dishes. Let the dishes cool down before you remove them from the appliance. Hot dishes are easily damaged.

Removing the load

- First remove items from the lower basket, then from the upper basket.
- There can be water on the sides and door of the appliance. Stainless steel becomes cool more quickly than the dishes.

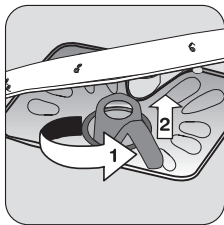


1

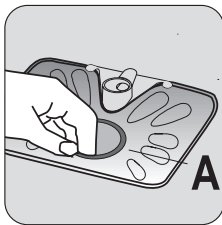


2

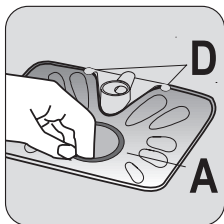
Fully clean the filters A, B and C below running water.



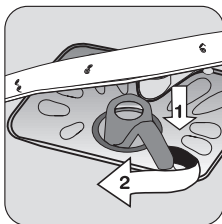
3
To remove filters B and C, turn the handle approximately 1/4 anti-clockwise.



4
Remove the flat filter A from the bottom of the appliance.



5
Put the filter A in the bottom of the appliance. Install the flat filter correctly under the two guides D.



6
Put the filter system in position. To lock the filter system, turn the handle clockwise until it locks in position.

Important! Do not remove the spray arms.

If the holes in the spray arms become clogged, remove remaining parts of soil with a cocktail stick.

External cleaning

Clean the external surfaces of the appliance and control panel with a damp soft cloth. Only use neutral de-

What to do if...

The appliance does not start or stops during operation. If there is a fault, first try to find a solution to the problem yourself. Refer to following charts. If you cannot find a solution to the problem yourself, contact your dealer or the Customer Care Centre.

tergents. Do not use abrasive products, scouring pads or solvents (acetone etc.).

Internal cleaning

Do an inspection at intervals of 3 months. Set a washing program for heavily soiled dishes. Use detergent, but do not put dishes in the appliance.

Long periods of non-operation

Do these steps when you do not use the appliance for a long period:

1. Disconnect the mains plug from the mains socket.
2. Close the water tap.
3. Keep the door open to prevent unpleasant smells.
4. Keep the inner side of the appliance clean.

Frost precautions

! **Caution!** Do not install the appliance where the temperature is below 0 °C. The manufacturer is not responsible for damage because of frost.

If not possible, empty the appliance and close the door. Disconnect the water inlet hose and remove water from the water inlet hose.

Moving the machine

Do these steps to move the appliance:

1. Disconnect the mains plug from the mains socket.
2. Close the water tap.
3. Remove the appliance and the hoses.
4. Do not tilt the appliance during transport.

! **Warning!** Switch the appliance off before you do the suggested corrective actions.

Fault code and malfunction	Possible cause and solution
<ul style="list-style-type: none"> continuous flash of the start/cancel indicator light 1 flash of the 'Finished' indicator light The appliance does not fill with water	<ul style="list-style-type: none"> The water tap is blocked or furred with limescale. Clean the water tap. The water tap is closed. Open the water tap. The filter in the water inlet hose is blocked. Clean the filter. The connection of the water inlet hose is not correct. The hose can be kinked or squashed. Make sure that the connection is correct.
<ul style="list-style-type: none"> continuous flash of the start/cancel indicator light 2 flashes of the 'Finished' indicator light The appliance will not drain	<ul style="list-style-type: none"> There is a blockage in the sink spigot. Clean the sink spigot. The connection of the water drain hose is not correct. The hose can be kinked or squashed. Make sure that the connection is correct.
The program does not start	<ul style="list-style-type: none"> The appliance door is not closed. Close the door. Mains plug is not connected. Plug-in appliance to the mains. The fuse has blown out in the household fuse box. Replace the fuse.

After the check, switch on the appliance. The program continues from the point of interruption. If the malfunction shows again, contact your Customer Care Centre. For other fault codes, not described in the chart, contact your Customer Care Centre.

These data are necessary to help you quickly and correctly:

- Model (Mod.)

- Product number (PNC)

- Serial number (S.N.)

For these data, refer to the rating plate.

Write the necessary data here:

Model description :

Product number :

Serial number :

The cleaning results are not satisfactory	
The dishes are not clean	<ul style="list-style-type: none"> The selected washing program is not applicable for the type of load and soil. The baskets are loaded incorrectly so that water cannot reach all surfaces. Spray arms do not turn freely because of incorrect arrangement of the load. The filters are dirty or not correctly installed. The quantity of detergent is too little or missing.
The dishes are wet and dull	<ul style="list-style-type: none"> No rinse aid has been used. The rinse aid dispenser is empty.

The cleaning results are not satisfactory


There are streaks, milky spots or a bluish coating on glasses and dishes	<ul style="list-style-type: none">• Decrease the rinse aid dosage.
Dry water drop stains on glasses and dishes	<ul style="list-style-type: none">• Increase rinse aid dosage.• The detergent can be the cause.

Technical data

Dimensions	Width (mm)	596
	Height (mm)	850
	Depth (mm)	610
Electrical connection - Voltage - Overall power - Fuse	Information on the electrical connection is given on the rating plate on the inner edge of the dishwasher door.	
Water supply pressure	Minimum	50 kPa (7 psi)
	Maximum	800 kPa (116 psi)
Capacity	Place settings	12

Environment concerns

The packaging materials are environmentally friendly and can be recycled. The plastic components are identified by markings, e.g. >PE<, >PS<, etc. Discard the packaging materials in the applicable container at the community waste disposal facilities.

 **Warning!** To discard the appliance, follow the procedure:

- Pull the mains plug out of the socket.
- Cut off the mains cable and mains plug and discard them.
- Discard the door catch. This prevents children closing themselves inside the appliance and endangering their lives.

Old appliance


Make sure that the appliance goes to the applicable collection point for recycling.

Make sure that this appliance is discarded correctly. Inappropriate waste discard of the appliance causes negative consequences for the environment and human health.

For more information about the recycling of this appliance, contact your local city office, your household waste disposal service or the shop where you purchased the appliance.

Installation

Fitting under a counter

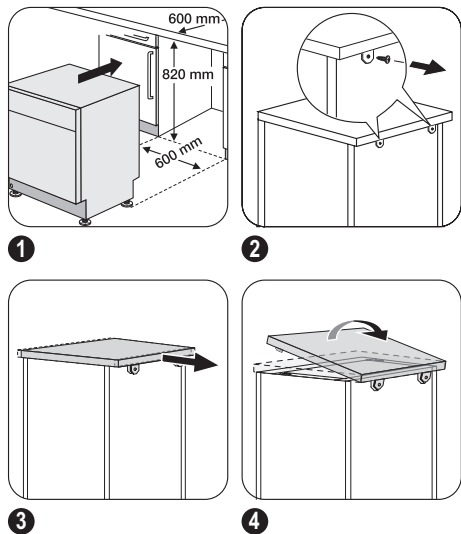
 **Warning!** Make sure that mains plug is disconnected from the mains socket during installation.

Put the appliance adjacent to a water tap and a water drain.

The plinth on freestanding appliance is not adjustable. Do not remove the appliance worktop if you want to use the dishwasher as a freestanding appliance.

Remove the appliance worktop to install it under a sink unit or a kitchen worktop.

Make sure that the dimensions of the recess agree with the given dimensions.



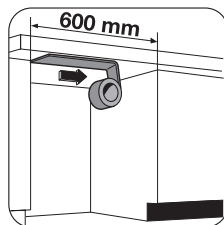
Adjusting the level of the appliance

Make sure that the appliance is level to close and seal the door correctly. If the level of the appliance is correct,

the door does not catch on the sides of the cabinet. If the door does not close correctly, loosen or tighten the adjustable feet until the appliance is level.

Adhesive steam protection foil

If the worktop is removed, fit the steam protection onto the front part of the kitchen cabinet benchtop.



i The steam protection foil is not supplied with free-standing models, but can be purchased from Electrolux Spare Parts.

Water connection

Water inlet hose

Connect the appliance to a cold water supply. Connect the inlet hose to a water tap with an external BSP thread spout of 3/4".

Inlet water supply

- Cold water pressure: 800 kPa max - 50 kPa min.
- Water flow rate 10 L / minute min.
- If cold water pressure is in excess of 800 kPa, a pressure reducing valve should be used. Check for leaks.

! **Caution!** Always use new hoses when you connect the appliance to the water mains. Old hoses must not be used. The water inlet hose must be examined at an interval of twelve months for deterioration and replaced if necessary.

The water pressure must be in the limits (refer to 'Technical data'). Make sure that the local water authority gives you the average mains pressure in your area. Make sure that there are no kinks in the water inlet hose and that the water inlet hose is not squashed or entangled.

Fit the hose nut correctly to prevent water leaks.

! **Caution!** Do not connect the appliance to new pipes or pipes that have been not used for a long time. Let the water run for some minutes, then connect the inlet hose.

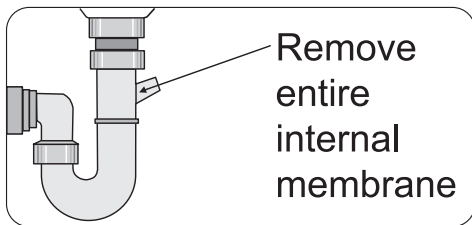
Water drain hose

The highest point of the drain hose must be no more than 60 cm from the floor and must have a continuous fall.

The drain hose can be lengthened using additional lengths and connectors. These must be purchased from Electrolux Spare Parts. The extension length must not exceed 2 metres.

The drain hose must be free of kinks and obstructions. Remove the sink plug when the appliance drains the water to prevent that the water goes back into the appliance.

If you connect the water drain hose to a trap spigot under the sink, remove the plastic membrane. If you do not remove the membrane, remaining food can cause a blockage in the drain hose spigot.



The appliance has a security feature to prevent dirty water going back into the appliance. If, the spigot of the sink has a 'non-return valve', this valve can cause the appliance to drain incorrectly. Remove the non-return valve.

Make sure that the water couplings are tight to prevent water leakage.

Electrical connection

Warning! Safety standards require the appliance to be earthed.

Prior to using the appliance for the first time, ensure that the rated voltage and type of supply on the rating plate match that of the supply where the appliance is to be installed.

The fuse rating is also to be found on the rating plate. Always plug the mains plug onto a correctly installed approved socket.

Do not use multi-ways plugs, connectors and extension cables. This can constitute a fire hazard through overheating.

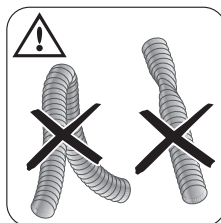
Warranty

Electrolux

FOR SALES IN AUSTRALIA AND NEW ZEALAND
This document sets out the terms and conditions of product warranties for Electrolux branded appliances. It is an important document. Please keep it with your proof of purchase documents in a safe place for future reference should you require service for your Electrolux appliance. General Terms and Conditions

1. In this warranty
 - Electrolux' means Electrolux Home Products Pty Ltd ABN 51 004 762 341 in respect of Appliances purchased in Australia and Electrolux

Caution! Ensure that hoses are not crushed or kinked under or behind the appliance.



Caution! Once connected the inlet hose to the water tap, turn the tap on and check that there are no leaks.

If necessary, have the domestic wiring system socket replaced. If the mains cable has to be replaced, contact your local Customer Care centre.

The mains plug must be accessible after the appliance has been installed.

Never unplug the appliance by pulling on the cable. Always pull the plug.

Test the appliance. Run a quick washing program and ensure that the appliance fills with water, washes and drains with no leaks.

The manufacturer accepts no liability for failure to observe the above safety precautions.

(NZ) Limited in respect of Appliances purchased in New Zealand;

- 'Appliance' means any Electrolux product purchased by you accompanied by this document;
- 'Warranty Period' means
 - i) where you use the Appliance for personal, domestic or household purposes in Australia the period of 24 months and in New Zealand the period of 24 months;
 - ii) where you use the Appliance for commercial purposes, in Australia the period of 0 months and in New Zealand the period of 0 months, (if the period stated is 0 months you are not covered by this product warranty) following the date of original purchase of the Appliance;

- 'you' means the purchaser of the Appliance not having purchased the appliance for re-sale, and 'your' has a corresponding meaning.
2. This warranty only applies to Appliances purchased and used in Australia or New Zealand and is in addition to (and does not exclude, restrict, or modify in any way) any non-excludable statutory warranties in Australia or New Zealand.
 3. Electrolux warrants that, when dispatched from an Electrolux warehouse, the Appliance is free from defects in materials and workmanship for the Warranty Period.
 4. During the Warranty Period Electrolux or its Authorised Service Centre will, at no extra charge if your appliance is readily accessible without special equipment, and subject to these terms and conditions, repair or replace any parts which it considers to be defective. You agree that any replaced Appliances or parts become the property of Electrolux. This warranty does not apply to light globes, batteries, filters or similar perishable parts.
 5. Parts and Appliances not supplied by Electrolux are not covered by this warranty.
 6. Where you are within an Electrolux service area, this warranty covers the cost of transport of the Appliance to and from Authorised Service Centres of Electrolux and travelling costs for representatives of the Authorised Service Centre to and from your home or business. If you are outside an Electrolux service area, you will bear these costs. For information about whether you are within an Electrolux service area, please phone 13 13 49 in Australia, or 0800 10 66 10 in New Zealand.
 7. Proof of purchase is required before you can make a claim under this warranty.
 8. You may not make a claim under this warranty unless the defect claimed is due to faulty or defective parts or workmanship. Electrolux is not liable in the following situations (which are not exhaustive):
 - The Appliance is damaged by
 - i) accident
 - ii) misuse or abuse, including failure to properly maintain or service
 - iii) normal wear and tear
 - iv) power surges, electrical storm damage or incorrect power supply
 - v) incomplete or improper installation
 - vi) incorrect, improper or inappropriate operation
 - vii) insect or vermin infestation.
 - The Appliance is modified without authority from Electrolux in writing.
 - The Appliance's serial number or warranty seal has been removed or defaced.
 - The Appliance was serviced or repaired by anyone other than Electrolux or its Authorised Service Centres.
9. This warranty, the contract to which it relates and the relationship between you and Electrolux are governed by the law applicable in the Australian State where the Appliance was purchased or the law applicable in New Zealand if the Appliance was purchased in New Zealand. Where the Appliance was purchased in New Zealand for business purposes the Consumer Guarantee Act does not apply.

Limitation of Liability

 10. To the extent permitted by law:
 - Electrolux excludes all warranties other than as contained in this document;
 - Electrolux shall not be liable for any loss or damage whether direct or indirect or consequential arising from your purchase, use or non-use of the Appliance.
 11. Provisions of the Trade Practices Act and State consumer legislation in Australia, and the Consumer Guarantees Act, the Sale of Goods Act and the Fair Trading Act in New Zealand, imply warranties or conditions, or impose obligations, upon Electrolux which cannot be excluded, restricted or modified. To the extent permitted by law, the liability of Electrolux (if any) arising out of or in relation to the Appliance or any services supplied by Electrolux shall be limited (where it is fair and reasonable to do so):
 - in the case of Appliances, at its option, to the replacement or repair of the Appliances or the supply of equivalent products or the payment of the cost of replacing the Appliances or having the Appliances repaired or of acquiring equivalent Appliances. Upon being replaced, parts and Appliances become the property of Electrolux; or

- in the case of services, at its option, to the supply of the services again or the payment of the cost of having the services re-supplied; and in the case of Appliances or services supplied in New Zealand, loss or damage whether direct or indirect or consequential that is reasonably foreseeable.



Privacy

You acknowledge that in the event that you make a warranty claim it will be necessary for Electrolux and

its Authorised Service Centres to exchange information in relation to you to enable Electrolux to meet its obligations under this warranty.

Important Notice

Before Calling a Service Technician please check carefully the operating instructions, service booklet and the warranty terms and conditions.

<p>FOR SERVICE OR TO FIND THE ADDRESS OF YOUR NEAREST STATE SERVICE CENTRE IN AUSTRALIA Please call 13 13 4 9 For the cost of a local call (Australia only)</p>	<p>SERVICE AUSTRALIA  Electrolux ELECTROLUX HOME PRODUCTS</p>	<p>FOR SPARE PARTS OR TO FIND THE ADDRESS OF YOUR NEAREST STATE SPARE PARTS CENTRE IN AUSTRALIA Please call 13 13 50 For the cost of a local call (Australia only)</p>
<p>FOR SERVICE OR TO FIND THE ADDRESS OF YOUR NEAREST AUTHORISED SERVICE CENTRE IN NEW ZEALAND Free call 0800 10 66 10 (New Zealand only)</p>	<p>SERVICE NEW ZEALAND  Electrolux ELECTROLUX HOME PRODUCTS</p>	<p>FOR SPARE PARTS OR TO FIND THE ADDRESS OF YOUR NEAREST SPARE PARTS CENTRE IN NEW ZEALAND Free call 0800 10 66 20 (New Zealand only)</p>

dishlex

www.electrolux.com

www.dishlex.com.au

Free Manuals Download Website

<http://myh66.com>

<http://usermanuals.us>

<http://www.somanuals.com>

<http://www.4manuals.cc>

<http://www.manual-lib.com>

<http://www.404manual.com>

<http://www.luxmanual.com>

<http://aubethermostatmanual.com>

Golf course search by state

<http://golfingnear.com>

Email search by domain

<http://emailbydomain.com>

Auto manuals search

<http://auto.somanuals.com>

TV manuals search

<http://tv.somanuals.com>