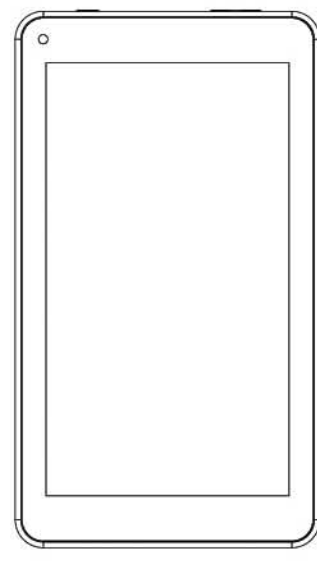




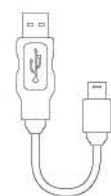
EM756 User Guide



7" Tablet



User Guide

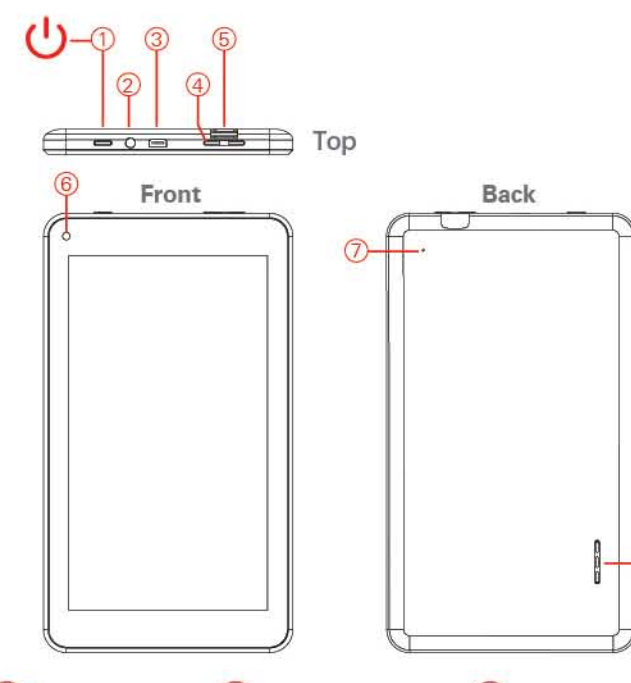


USB Cable

- Service should only be provided by an authorized service provider.
- Never attempt to disassemble, repair or modify the tablet yourself.
- Do not use the tablet in rain or other wet locations.
- Avoid spilling any liquid on the tablet.
- In case the tablet gets wet, unplug all cables and turn off the tablet.
- Do not attempt to dry the tablet with an external heat source.
- Unplug all cables and turn off the tablet before cleaning.
- Use a soft, lint-free cloth to clean the tablet and display.
- Avoid getting moisture in open ports.
- Do not use household cleaners, solvents, alcohol, or abrasives to clean the tablet.
- Routinely check the tablet for proper and safe conditions. If there is any damage, or broken parts, remove the tablet from use and contact Customer Support for replacement.
- If for any reason the screen (display) is fractured or cracked, immediately remove this product from use and contact Customer Support for replacement.
- It is rare but possible for pressure to be triggered by light flashes or patterns such as those on computer or TV screens. To reduce exposure to this potential hazard, play/watch in a well-lit room, sit an appropriate distance from the screen and take 10- to 15-minute breaks every hour.
- Cords could be a strangulation hazard.
- Keep out of reach of children under 3 years of age.
- Children pulling on the cord could cause the computer monitor or other equipment to which the device is connected to fall with possibility of property damage, serious injury, or death. Adult supervision required during play.
- Long-term exposure to loud sounds, at high volume, may result in permanent hearing loss.
- When using headphones or earbuds, it is recommended that the product is listened to at lower volumes for shorter periods of time. Set the volume while in a quiet environment; turn the volume down if you cannot hear the people speaking near you.
- Limit the listening time to 60 minutes, followed by a quiet period. The louder the volume, the less time required before your hearing may be affected.
- If you experience ringing in your ears or hear muffled speech, stop listening and have your hearing checked.
- If you experience ringing in your ears or hear muffled speech, stop listening and have your hearing checked.

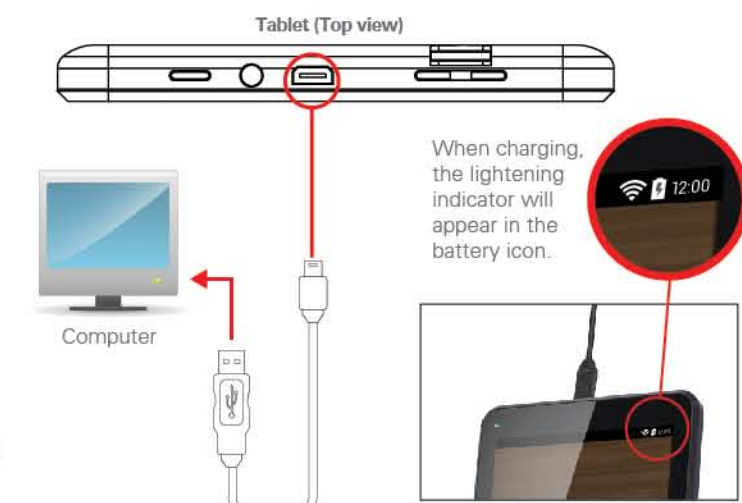
WARNING: TO REDUCE THE RISK OF FIRE OR ELECTRICAL SHOCK, DO NOT EXPOSE THIS PRODUCT TO RAIN OR MOISTURE.

<p>THE LIGHTNING BOLT WITH AN INSULATED TRIANGLE POINTS TO THE PRESENCE OF UNREMOVABLE CHARGES WITHIN THE PRODUCT'S ENCLOSURE. THESE CHARGES CAN SURVIVE MAINTENANCE TO CORRECT A RISK OF ELECTRICAL SHOCK TO PERSONS.</p>	<p>WARNING: TO REDUCE THE RISK OF ELECTRICAL SHOCK, DO NOT REMOVE COVER OR BACK.</p> <p>NO USER SERVICEABLE PARTS INSIDE. REFER SERVICE TO QUALIFIED SERVICE PERSONNEL.</p>	<p>THE EXCLAMATION POINT WITHIN THE TRIANGLE POINTS TO THE PRESENCE OF IMPORTANT OPERATING AND MAINTENANCE SERVICE INSTRUCTIONS IN THE LITERATURE ACCOMPANYING THE PRODUCT.</p>
---	---	--



- 1 Power
- 2 Headphone Jack
- 3 Micro USB
- 4 Volume Buttons
- 5 Micro SD Card Slot
- 6 Front Camera
- 7 Reset
- 8 Speaker

Charge your tablet by plugging the supplied USB cable into a power source such as a computer or a USB power adaptor (not included). When charging from a computer using the included USB cable, the tablet will fully charge in about 4 ~ 5 hours.



The tablet may also be charged using an optional USB rapid charger. To order the optional USB rapid charger:

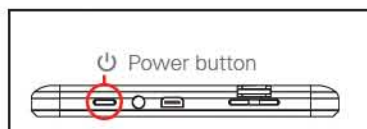
- Visit southern telecom.com/charger and order online
- Call us: 1-855-272-4600

Power ON / OFF

Turning on

Turning on the tablet

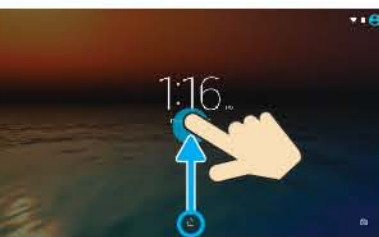
Press & hold the Power button until the startup screen appears.



Tablet (front view)

Power off the tablet

Press & hold the Power button until the "Power off" option appears.



Lock screen

Lock the tablet (standby)

Briefly press the Power button. (Lock the tablet to conserve the battery).

Unlock the tablet

Briefly press the Power button, and slide the "Lock icon" up.

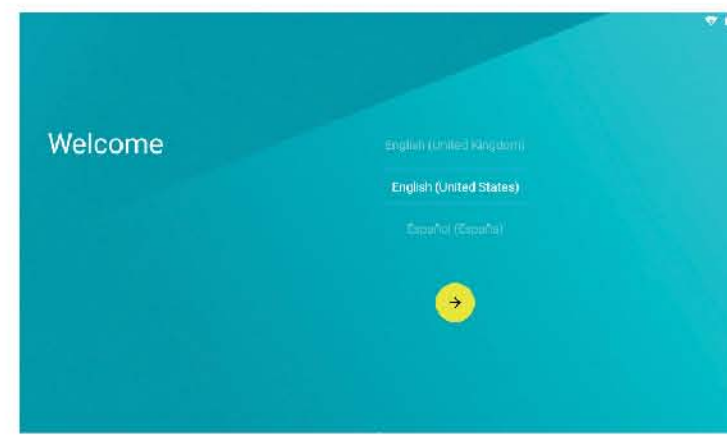
1 Press and hold the Power button to get started.

2 Follow the initial setup wizard prompts.

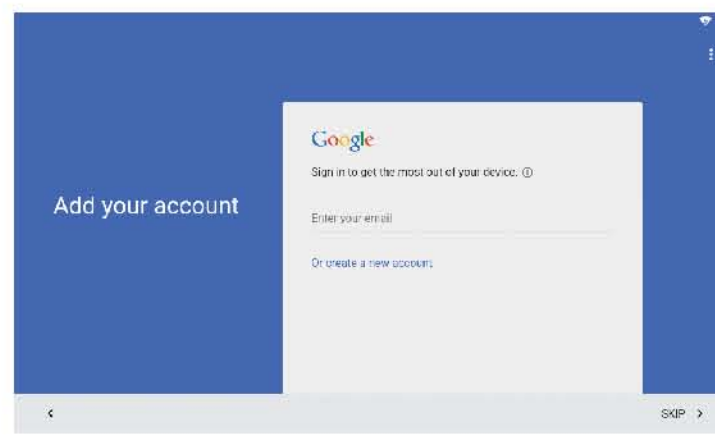
3 To use the Google Play store, sign into or create a Google account.



Startup screen



Setup wizard



Google account

Google Play™



Google Play

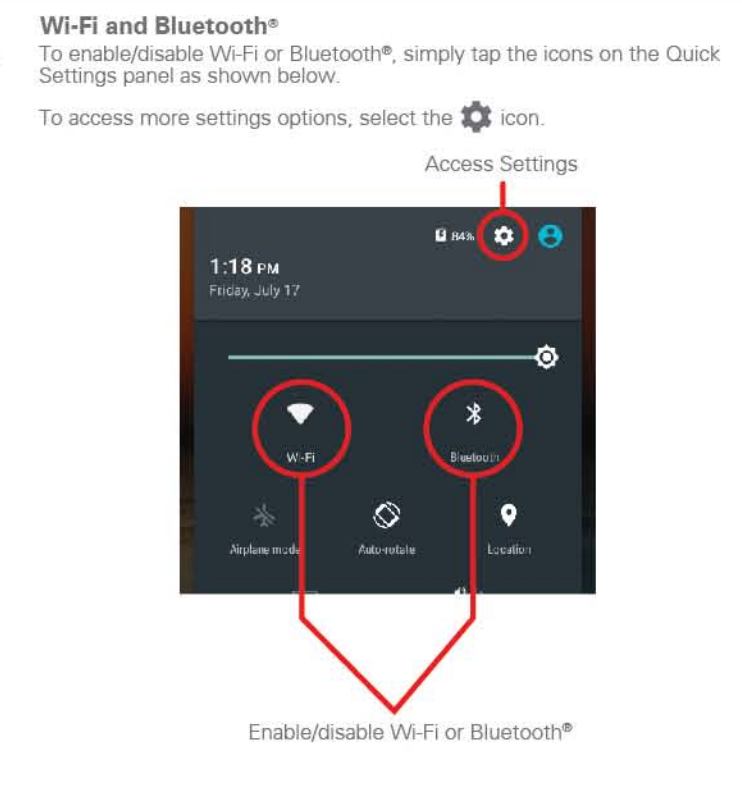
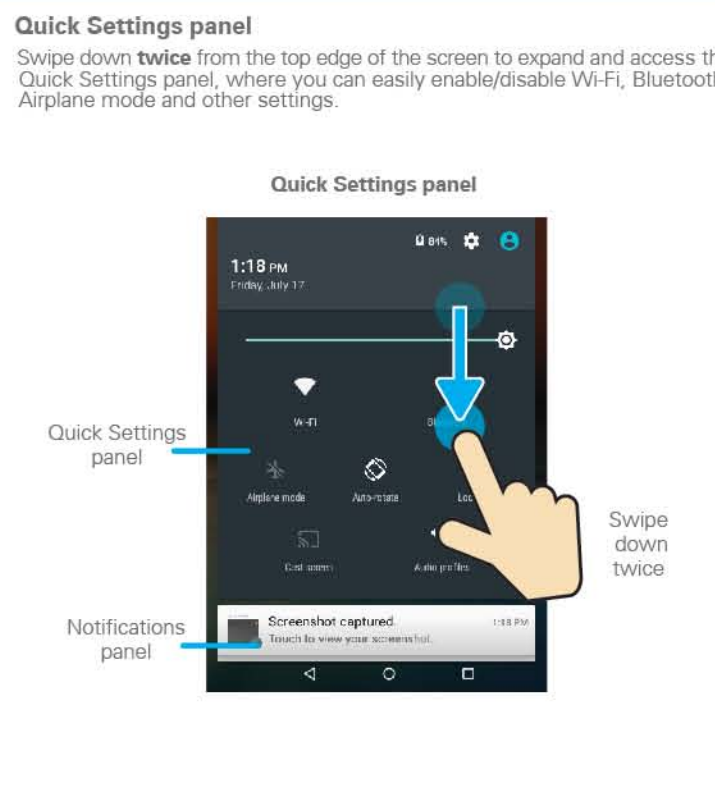
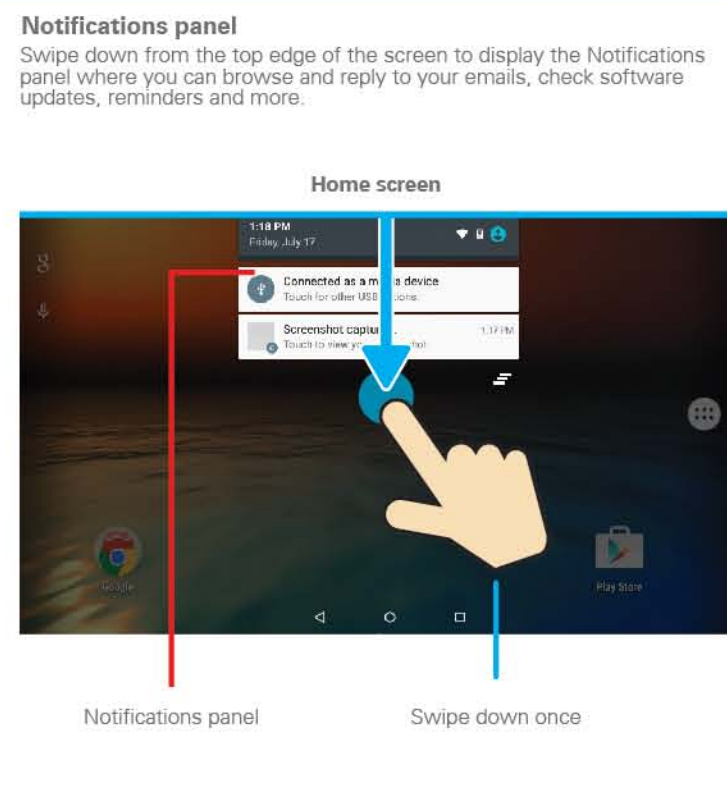
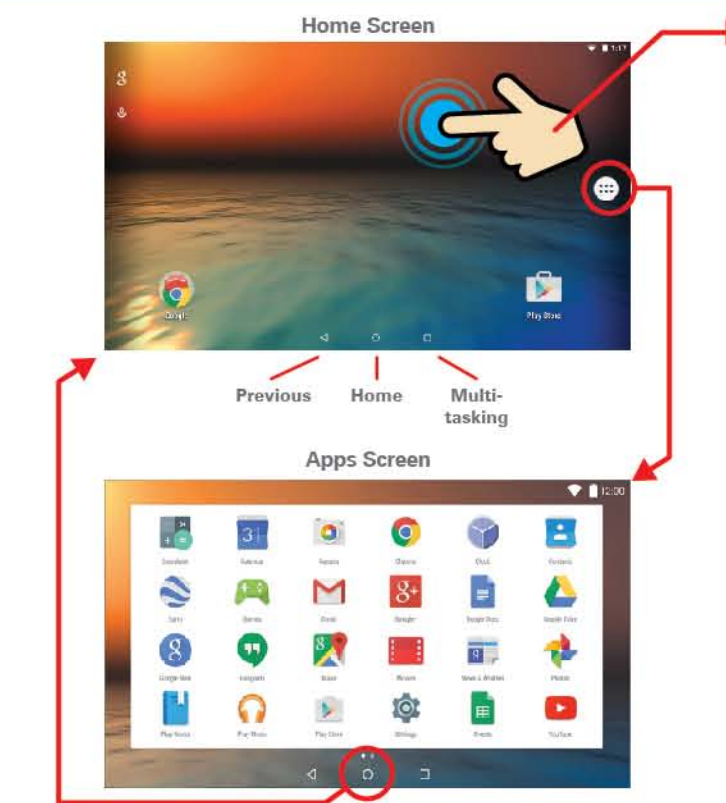
Google Play™ is a digital content experience from Google where you can find and enjoy your favorite music, movies, TV shows, books, and Android™ apps and games. It's your entertainment hub; you can access it from the web or from your Android device, and all your content is instantly available across your devices.



If you use Gmail™, you already have a Google account—if not, you can create an account now.

Home Screen

Notifications and Quick Settings



Expanding the storage

Connecting to a computer

Legal information

Limited Warranty

Inserting a Micro SD card
The tablet supports Micro SD cards up to 64GB (not included). To install a Micro SD card into the tablet, carefully insert the card as shown below into the card slot until it clicks and locks into place. To remove the Micro SD card, gently press it inward to eject.

Connect the tablet to the computer using the included USB cable as shown below.

FCC Part 15:
This equipment has been tested and found to comply with the requirements for a Class B digital device under Part 15 of the Federal Communications Commission (FCC) rules. These requirements are intended to provide reasonable protection against harmful interference in a residential installation. This equipment generates, uses and can radiate radio frequency energy and, if not installed and used in accordance with the instructions, may cause harmful interference to radio communications. However, there is no guarantee that interference will not occur in a particular installation. If this equipment does cause harmful interference to radio or television reception, which can be determined by turning the equipment off and on, the user is encouraged to try to correct the interference by one or more of the following measures:

- Re-orient or relocate the receiving antenna.
- Increase the separation between the equipment and receiver.
- Connect the equipment into an outlet on a circuit different from that to which the receiver is connected.
- Consult the dealer or an experienced radio/TV technician for help.

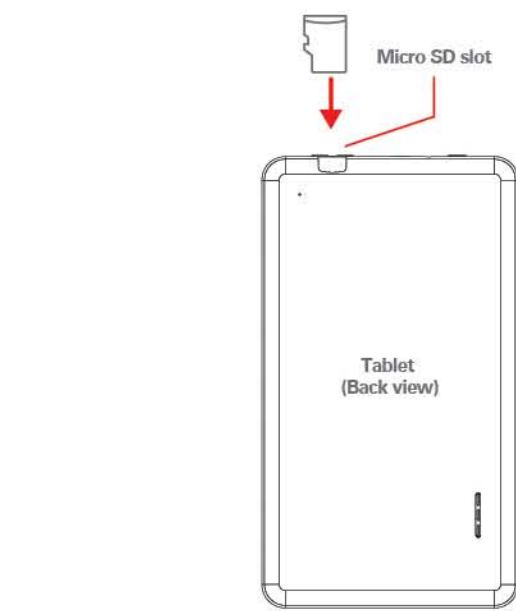
Do not attempt to repair or modify this equipment.
Warning: Changes or modifications to this equipment not expressly approved by the party responsible for compliance could void the user's authority to operate the equipment. This device complies with Part 15 of the FCC Rules. Operation is subject to the following two conditions:
(1) This device may not cause harmful interference, and
(2) this device must accept any interference received, including interference that may cause undesired operation.

Shielded USB cables must be used with this unit to ensure compliance with the Class B FCC limits.

Information Regarding Exposure to Radio Frequency Energy
Your Device is designed and manufactured not to exceed the emission limits for exposure to RF energy set by the Federal Communications Commission of the United States (FCC). Information on your Device is on file with the FCC and can be found under the Display/Owner section of <http://www.fcc.gov/wireless> after searching on the FCC ID for your Device, which can be found on the back of the Device.

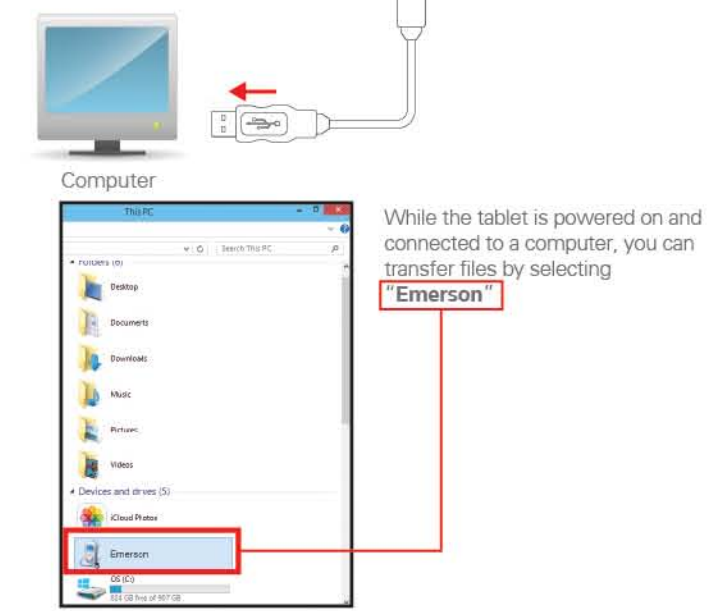
If your electronic device has internal memory on which personal or other confidential data may be stored, you may want to perform a data sanitization process before you dispose of your device to assure another party cannot access your personal data. Data sanitization varies by the type of product and its software, and you may want to research the best sanitization process for your device before disposal. You may also check with your local recycling facility to determine their data sanitization procedures during the recycling process.

LIMITED WARRANTY TO ORIGINAL CONSUMER
This Product (including any accessories included in the original packaging) as supplied and distributed new by an authorized retailer is warranted by AIT, Inc. (AIT) to the original consumer purchaser against defects in materials and workmanship ("Warranty") as follows:
Product Type: Tablet Territory: United States / Canada
Parts Warranty: 90 days Labor Warranty: 90 days
To obtain warranty service:
• Call the Customer Support number located below, or go to our website portal to receive an SRO number.
• Provide proof of the date of purchase within the package (Dated bill of sale).
• Prepay all shipping costs to the authorized service center, and remember to insure your return.
• Include a return shipping address (no P.O. Boxes), a telephone contact number, and the defective unit within the package.
• Describe the defect or reason you are returning the product.



Micro SD slot

Tablet (Back view)



Computer

While the tablet is powered on and connected to a computer, you can transfer files by selecting "Emerson"

Battery Disposal & Recycle
This device contains a Lithium-ion battery. The battery must be recycled or disposed of properly. Contact your local waste management office for information on battery recycling or disposal. ☎ 1-800-822-8827

Emerson and the Q-Clair logo are registered trademarks of Emerson Radio Corp., Plainfield, NJ, USA.
©2015 All Rights Reserved / Made in China

Android, Google, Google Play and other marks are trademarks of Google Inc. The Bluetooth® word mark and logos are owned by the Bluetooth SIG, Inc. All other trademarks and trade names are those of their respective owners.



Free Manuals Download Website

<http://myh66.com>

<http://usermanuals.us>

<http://www.somanuals.com>

<http://www.4manuals.cc>

<http://www.manual-lib.com>

<http://www.404manual.com>

<http://www.luxmanual.com>

<http://aubethermostatmanual.com>

Golf course search by state

<http://golfingnear.com>

Email search by domain

<http://emailbydomain.com>

Auto manuals search

<http://auto.somanuals.com>

TV manuals search

<http://tv.somanuals.com>