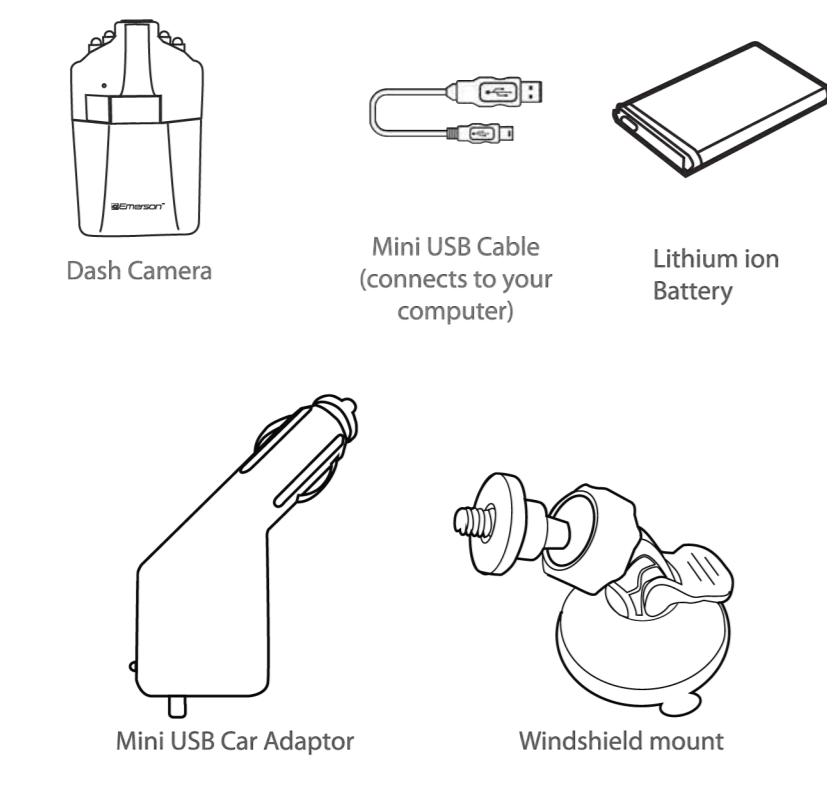


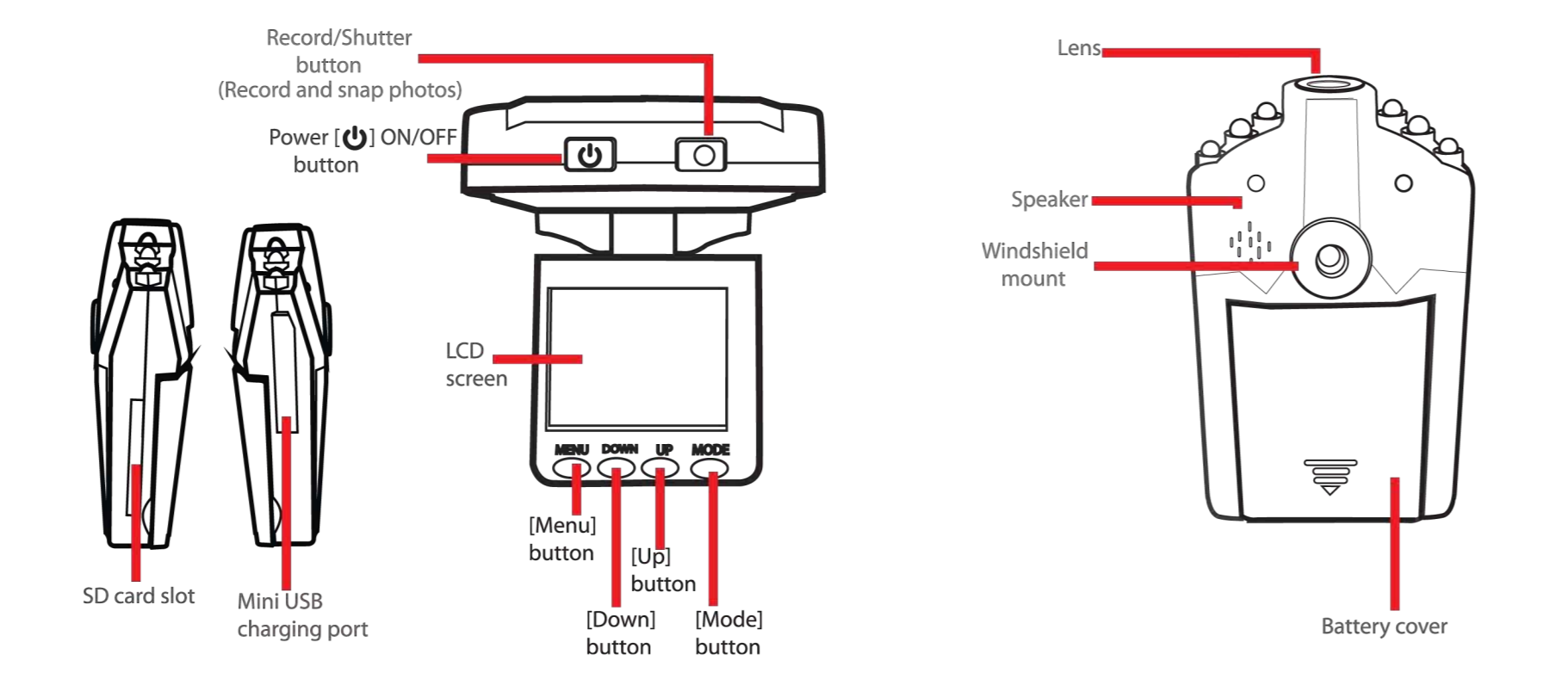


User Guide
EMDC100

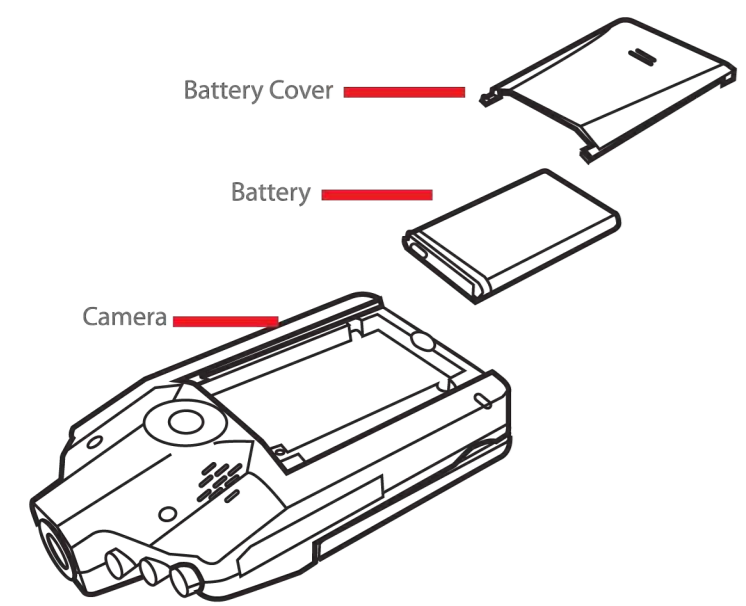
In the box



Location of Controls

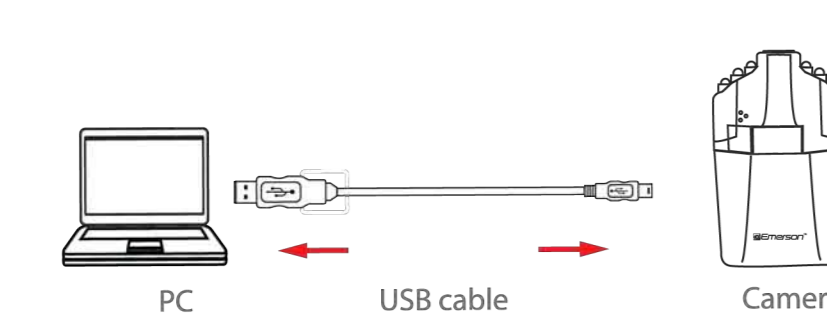


Installing the Battery

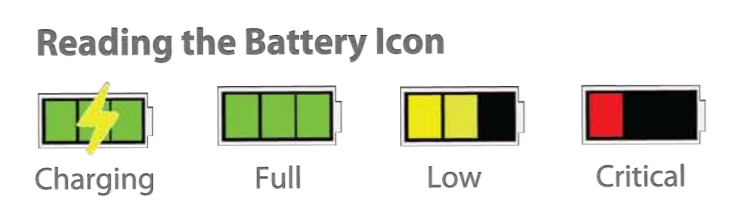


- Open the battery cover by gently pressing down and sliding the battery cover away from the camera.
- Insert the lithium-ion battery into the battery compartment as shown in the diagram above.
- Replace the battery cover and press the [Power] button to turn the camera on.

Charging the battery

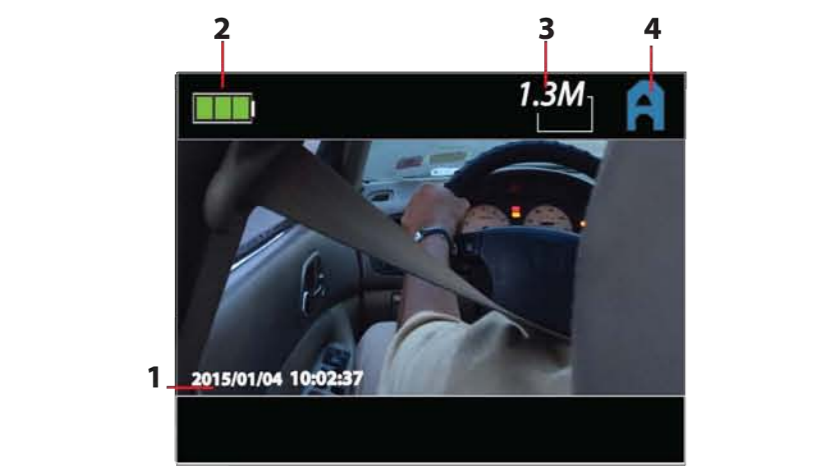


- Connect the small end of the Mini USB charging cable to the Mini USB port on the camera.
- Connect the larger end of the Mini USB charging cable to your computer or AC Adaptor (not included).
- When the Mini USB charging cord is connected, the camera's LCD screen will go into standby mode. The battery indicator is located on the upper left corner of the camera's LCD screen.



Picture Mode

- Press the [Power] button to turn the camera ON. When the camera is powered ON, it will be in Video Mode and will automatically start recording.
- Press the [Mode] button to cancel the recording.
- Quick press the [MODE] button once, the [Picture] icon will appear in the upper right side of the LCD screen.
- Press the [Mode] button to snap a photo.

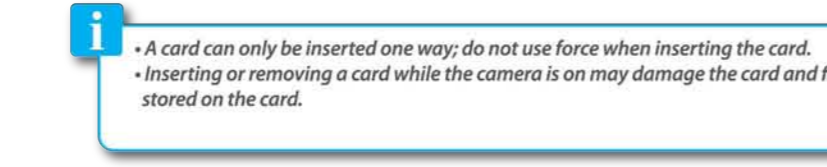


- Date / Time
- Battery indicator
- Motion Detect Indicator
- Brightness
- SD card Indicator
- Resolution
- Video mode indicator

Using your camera

SD card installation
This camera has no internal memory and requires an SD card (not included) to take and save pictures or record videos. The camera can support SD cards up to **32GB**. To install the SD card into the camera, follow the steps below:

- Turn the camera off.
- Insert the SD card into the card slot (as shown below) until it clicks and locks into place.
- To remove the card, gently push it in until it pops out.

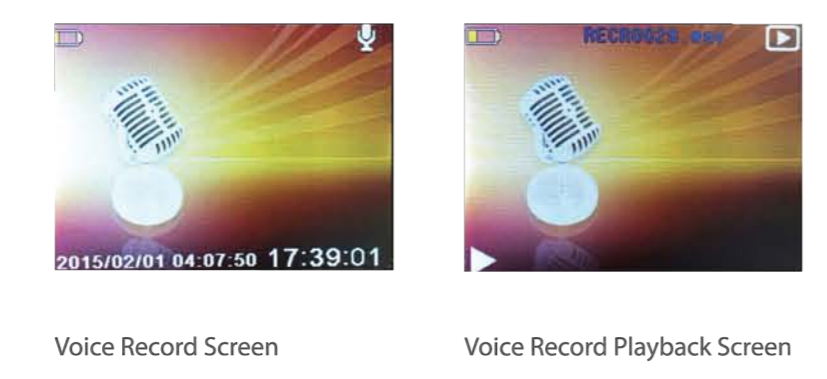


Using the Voice Recorder

- To access the camera's Voice Recorder, follow the instructions below:
- Press the [MODE] button until the voice recorder is selected.
 - Press the [Power] button to start recording.
 - Press the [Mode] button again to stop recording.

To listen to your recording in Playback mode:

- Press the [MODE] button until Playback mode is selected.
- Use the [UP] or [DOWN] keys to select your recording.
- Press the [Mode] button to listen to your recording.
- Press the [Power] button again to stop playback.



1. Date/Time
2. Battery indicator
3. Depth of field
4. Picture mode indicator

Switching Camera Modes

Video Mode

- Press the [Power] button to turn the camera ON. When the camera is powered ON, it will be in Video Mode and will automatically start recording.
- Press the [Mode] button to cancel the recording.
- Press the [Power] button to start recording again.

Picture Mode

- Press the [Power] button to turn the camera ON. When the camera is powered ON, it will be in Video Mode and will automatically start recording.
- Press the [Mode] button to cancel the recording.
- Quick press the [MODE] button once, the [Picture] icon will appear in the upper right side of the LCD screen.

Playback Mode

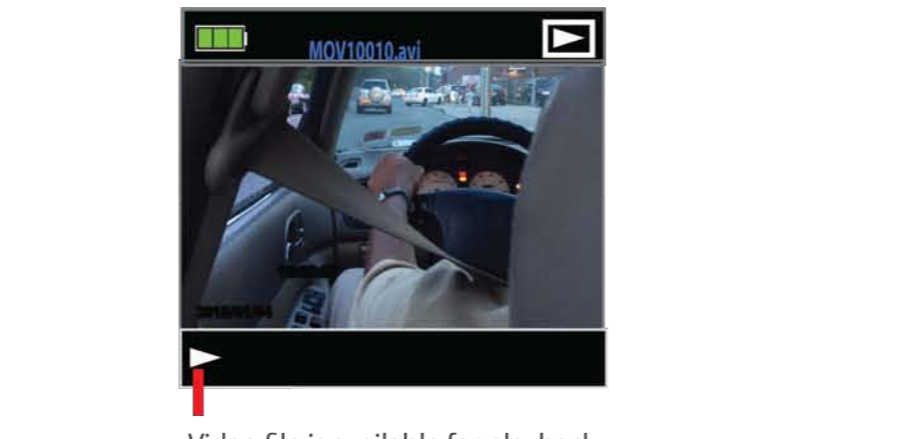
- Press the [Power] button to turn the camera ON. When the camera is powered ON, it will be in Video Mode and will automatically start recording.
- Press the [Mode] button to cancel the recording.
- Quick press the [MODE] button three times, the [Play] icon will appear in the upper right side of the LCD screen.

Playback Mode

- Picture Playback Mode**
- Make sure that an SD card is inserted into the camera.
 - Press the [Power] button to turn the camera ON. When the camera is powered ON, it will be in Video Mode and will automatically start recording.
 - Press the [Mode] button to stop recording.
 - Press the [MODE] button 3 times to switch to Playback Mode. The [Play] icon will appear in the upper right side of the LCD screen, meaning you are in Playback Mode.
 - Use the [UP] and [DOWN] buttons to view your saved photos, voice recordings and videos.

Video Playback Mode
To access your video files stored on the camera's SD card, quick press the [MODE] button. The [Play] icon will appear in the upper right corner indicating that your video files are ready for playback.

- Use the [UP] or [DOWN] buttons to select a video file.
- Press the [Power] button to play your desired video file.
- Press the [Mode] button again to pause stop video playback.



Video file is available for playback

System Settings

To access the camera's System Settings menu, follow the instructions below:

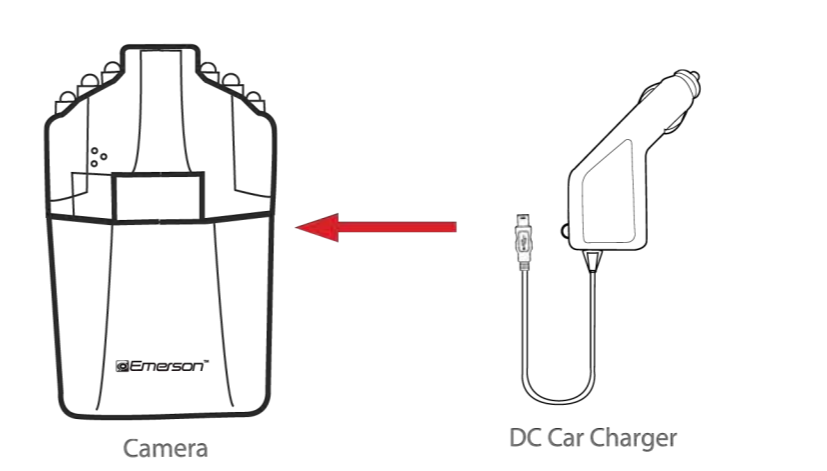
- Press the [MENU] button from any screen.
- Press the [MENU] button again to access the SETUP menu.
- Use the [UP] or [DOWN] buttons to scroll through the settings.
- Press the [Mode] button to select the desired setting.
- Use the [UP] or [DOWN] buttons to select from the list of functions.
- Press the [Power] button to make your selection and return to the main menu.
- Press the [MENU] button to exit.



System Settings Options	
FORMAT	Format the SD card (Erases all media on SD card)
LANGUAGE	Select English / Spanish / Portuguese / Russian / Polish / Italian / Chinese
AUTO OFF	Standby time is set to OFF, 1, 3, or 5 minutes.
SYS. RESET	Reset to factory settings
LIGHT FREQ	50Hz / 60Hz (60Hz Standard U.S. frequency)
DATE INPUT	Use the [UP] and [DOWN] buttons to select the date and time. Use the [Power] button to move to the next field.
USB	Select PC Cam to use the camera as a web camera. Select Disk Drive to take photos, videos or voice recordings and review your files on a computer.

Using the DC CarCharger

- Make sure that your camera is turned off and your SD card is properly inserted.
- Insert the small Mini USB end of the DC car charger into the Mini USB port on the camera.
- Insert the DC car charger into your vehicle's charging port.



FCC Information

FCC Part 15:
This device complies with Part 15 of the FCC Rules. Operation is subject to the following two conditions:
(1) this device may not cause harmful interference, and
(2) this device must accept any interference received, including interference that may cause undesired operation.

Warning: Changes or modifications to this equipment not expressly approved by the party responsible for compliance could void the user's authority to operate the equipment.
NOTE: This equipment has been tested and found to comply with the requirements for a Class B digital device under Part 15 of the Federal Communications Commission (FCC) rules. These requirements are intended to provide reasonable protection against harmful interference in a residential installation. This equipment generates, uses and can radiate radio frequency energy and, if not installed and used in accordance with the instructions, may cause harmful interference to radio communications.

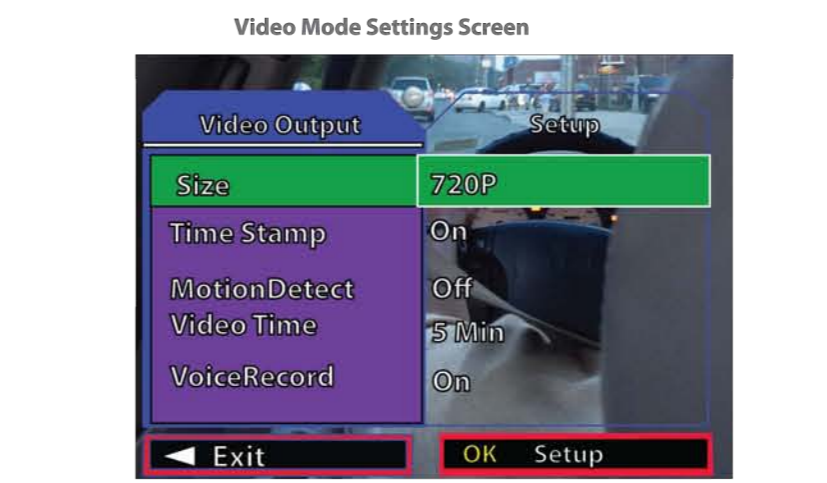
However, there is no guarantee that interference will not occur in a particular installation. If this equipment does cause harmful interference to radio or television reception, which can be determined by turning the equipment off and on, the user is encouraged to try to correct the interference by one or more of the following measures:

- Reorient or relocate the receiving antenna.
- Increase the separation between the equipment and receiver.
- Connect the equipment into an outlet on a circuit different from that to which the receiver is connected.
- Consult the dealer or an experienced radio/TV technician for help.

Video Mode Settings

To make changes to the video mode settings, follow the instructions below:

- Switch the [MODE] until video mode is selected.
- Press the [MENU] button.
- Use the [UP] or [DOWN] buttons to scroll through the settings menu.
- Press the [Mode] button to select the desired setting.
- Use the [UP] or [DOWN] buttons to select from the list of functions.
- Press the [Power] button to make your selection and return to the main menu.
- Press the [MENU] button to exit.

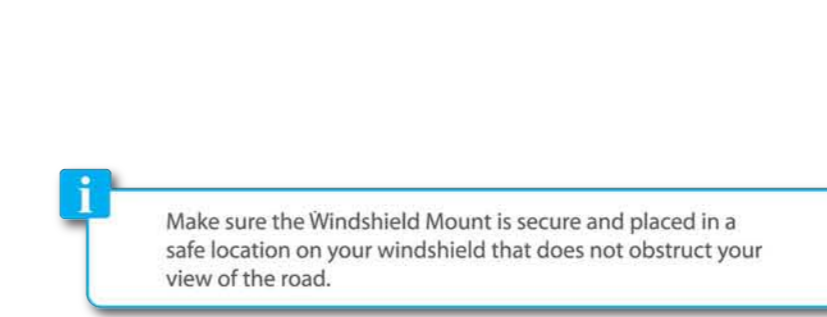


Video Mode Settings Options	
SIZE	1080P / 720P / VGA
TIME STAMP	Add or remove the date and time from photos and videos
MOTION DETECT	Automatically records when camera senses movement
VIDEO TIME	OFF / 1 Minute / 3 Minutes / 5 Minutes / 10 Minutes Default is 3 minutes. The camera will record in intervals of 3 minutes.
VOICE RECORD	Voice Record ON or OFF
MD SENSITIVITY	Set the Motion Detect record sensitivity to High / Normal / Low

Using the Windshield Mount

Connect your camera to the Windshield Mount.

- Turn the camera over to access the Windshield mounting port. Align the Windshield Mount with the Windshield Mounting port on the camera.
- Insert the Camera mount into the camera's mounting slot.
- Secure the camera to the mount by turning the fastener in a clockwise motion.
- Continue until the camera is firmly positioned on the windshield mount.
- Locate a safe location on your vehicle's windshield and press down on the mounting lock to secure the mount in place.

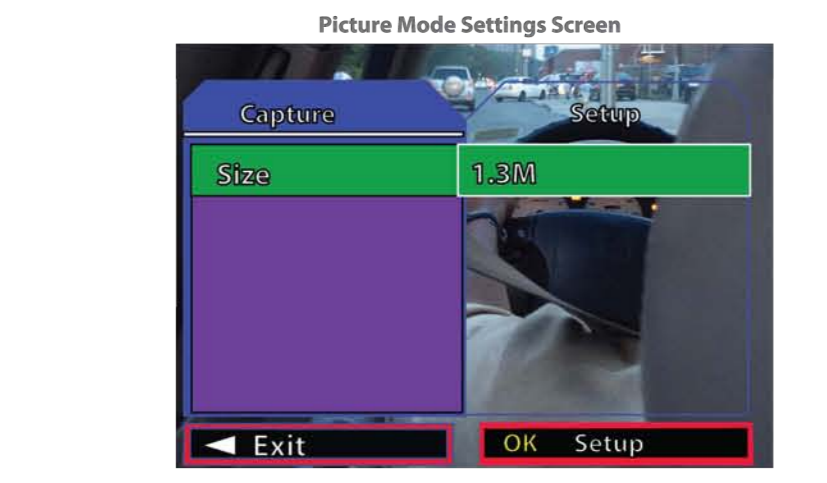


Make sure the Windshield Mount is secure and placed in a safe location on your windshield that does not obstruct your view of the road.

Picture Mode Settings

To make changes to the picture mode settings, follow the instructions below:

- Press the [MODE] button to enter picture mode.
- Press the [MENU] button.
- Use the [UP] or [DOWN] buttons to scroll through the settings menu.
- Press the [Mode] button to select the desired setting.
- Press the [MENU] button to exit.



Picture Mode Settings Options	
SIZE	Select your preferred depth of field: VGA / 1.3M / 2M / 3M

Playback Mode Settings

To make changes to the video mode settings, follow the instructions below:

- Press the [MODE] button to enter playback mode.
- Press the [MENU] button.
- Use the [UP] or [DOWN] buttons to scroll through the settings.
- Press the [Mode] button to select the desired setting.
- Use the [UP] or [DOWN] buttons to select from the list of functions.
- Press the [Power] button to make your selection and return to the main menu.
- Press the [MENU] button to exit.



Playback Mode Settings Options	
DELETE	"One" (Delete the currently displayed video or picture) or "All" (Delete one or all of your picture and video files. When locked the files will not be deleted.)
LOCK / UNLOCK	Lock one or all of your picture and video files. When locked the files will not be deleted.
THUMBNAIL	Change the way your Video and Photo files are displayed
VOLUME	select playback volume from level 0 to 3

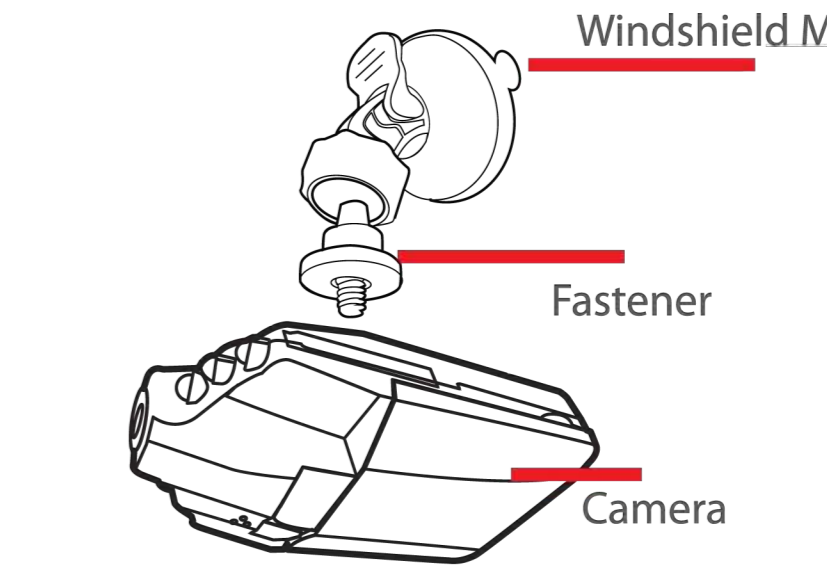
Connecting to a Computer

Connect your camera to a computer
To edit or upload and share your videos on your computer, follow the steps below to connect the camera to your computer.

- Press the [MENU] button to open. Press the [MENU] button again to access the System Settings Menu.
- Use the [UP] or [DOWN] buttons to locate "USB" Press the [Power] button to confirm.
- Use the [UP] or [DOWN] buttons to select "Disk Drive" from the menu.
- Press the [Power] button to confirm your entry.
- Press the [MENU] button to exit the System Settings Menu.
- Insert the smaller end of the Mini USB cable into the camera's Mini USB port.
- Connect the larger end of the Mini USB cable into your computer's USB port.
- On your PC select "My Computer" view the list of connected devices.
- Click on "Removable Disk" to access the camera's SD card.
- Select "DCIM" to access your saved files.
- Before disconnecting the camera, click on the "Safely Remove Hardware" icon usually located on the lower right corner of your desktop.

OR

Click on "My Computer", RIGHT click on "Removable Disk" then click on "Eject" from the drop down menu.



Limited Warranty

In the unlikely event that this product is defective, or does not perform properly, you may within ninety (90) days from your original date of purchase return it to the authorized service center for repair or exchange.

- TO OBTAIN WARRANTY SERVICE:**
- Call the Customer Support number located below or go to our website portal to receive an SRO number. Provide proof of the date of purchase within the package (Dated bill of sale).
 - Prepay all shipping costs to the authorized service center, and remember to insure your return.
 - Include a return shipping address (no P.O. Boxes), a telephone contact number, and the defective unit within the package.
 - Describe the defect or reason you are returning the product.



Your product will be repaired or replaced, at our option, for the same or similar model of equal value if examination by the service center determines this product is defective. Products received damaged as a result of shipping will require you to file a claim with the carrier.

The shipping address of the authorized service center is:

Southern Telecom, Inc.
Attention: Customer Service (2nd Floor)
14-C 53rd Street
Brooklyn, NY 11232

Should you have any questions or problems concerning this product, please contact our customer service department at:

Customer Support:
1-877-768-8483 (Toll Free)
cs@southerntelecom.com

Monday - Thursday: 9AM - 5PM (EST)
Friday: 9AM - 3PM (EST)

www.southerntelecom.com

Warranty service not provided
This warranty does not cover damage resulting from accident, misuse, abuse, improper installation or operation, lack of reasonable care, and unauthorized modification. This warranty is voided in the event any unauthorized person opens, alters or repairs this product. All products being returned to the authorized service center for repair must be suitably packaged.

Limitation of Warranty:
- THE WARRANTY STATED ABOVE IS THE ONLY WARRANTY APPLICABLE TO THIS PRODUCT. ALL OTHER WARRANTIES, EXPRESS OR IMPLIED (INCLUDING ALL IMPLIED WARRANTIES OF MERCHANTABILITY OR FITNESS FOR A PARTICULAR PURPOSE) ARE HEREBY DISCLAIMED. NO VERBAL OR WRITTEN INFORMATION GIVEN BY A.T.I. INC. ITS AGENTS, OR EMPLOYEES SHALL CREATE A WARRANTY OR IN ANY WAY INCREASE THE SCOPE OF THIS WARRANTY.

- REPAIR OR REPLACEMENT AS PROVIDED UNDER THIS WARRANTY IS THE EXCLUSIVE REMEDY OF THE CONSUMER. A.T.I. INC. SHALL NOT BE LIABLE FOR INCIDENTAL OR CONSEQUENTIAL DAMAGES RESULTING FROM THE USE OF THIS PRODUCT OR ARISING OUT OF ANY BREACH OF ANY EXPRESS OR IMPLIED WARRANTY ON THIS PRODUCT. THIS DISCLAIMER OF WARRANTIES AND LIMITED WARRANTY ARE GOVERNED BY THE LAWS OF THE STATE OF NEW YORK, EXCEPT TO THE EXTENT PROHIBITED BY APPLICABLE LAW, ANY IMPLIED WARRANTY OF MERCHANTABILITY OR FITNESS FOR A PARTICULAR PURPOSE ON THIS PRODUCT IS LIMITED TO THE APPLICABLE WARRANTY PERIOD SET FORTH ABOVE.

Some states do not allow the exclusion nor limitation of incidental or consequential damages, or limitations on how long an implied warranty lasts so the above limitations or exclusions may not apply to you. This warranty gives you specific legal rights, and you also may have other rights that vary from state to state.

Free Manuals Download Website

<http://myh66.com>

<http://usermanuals.us>

<http://www.somanuals.com>

<http://www.4manuals.cc>

<http://www.manual-lib.com>

<http://www.404manual.com>

<http://www.luxmanual.com>

<http://aubethermostatmanual.com>

Golf course search by state

<http://golfingnear.com>

Email search by domain

<http://emailbydomain.com>

Auto manuals search

<http://auto.somanuals.com>

TV manuals search

<http://tv.somanuals.com>