

 **Emerson**TM

EVC1700



User Guide

Package includes:



Digital Video
Camera



Rechargeable
Battery



USB Extension Cable
(connects to your
computer)



Audio/Video Cable
(connects to your TV)



CD (ArcSoft® Media
Impression Software)



MemoriesOnTV
Software



User Guide

Introduction

Congratulations on your purchase of this digital video camera. Before using the camera, please read this user manual carefully. The main purpose is to shoot videos. It is also equipped with a secondary still shot feature. Please note that this is not meant to replace a regular still shot or digital camera. It is only a side feature.

The illustrations in this user manual are to visually detail the operation of the digital video camera.

Notice for use

General:

1. Never open the housing of the digital video camera as some parts may cause an electrical shock.
2. Moisture, extreme pressure and overheating may damage this digital video camera.

Memory and storage:

1. SD/SDHC class 2 and 4 memory cards are compatible with this digital video camera, with a maximum capacity of 32GB. Using a different class of card may result in video distortion and skipping.
2. When buying a SD//SDHC card, take the digital video camera with you to ensure compatibility.
3. When a SD//SDHC card is inserted, the internal memory of the digital video camera will not function.
5. When storing documents using the internal memory or the memory card, make sure that the size of the files do not exceed the capacity of the memory.

Maintenance and care:

1. To clean the lens, the first step is to blow away dust from the surface. After doing so, use a cloth or tissue to wipe the lens. If necessary, use lens cleanser.
2. Avoid touching the lens with your fingers.

3. When left idle for long periods, remove the battery from your digital video camera and store it in a dry and dark place.

Miscellaneous:

1. When switching video output between LCD display and video devices, be sure to exit from the 'play' or 'record' state.

2. This digital video camera is suitable for environments between 0 °- 40 ° C or 32 °-104 ° F. Never keep the digital video camera in extremely high temperatures, such as a car parked in the sun. Never keep the digital video camera in damp or moist places. In order to prevent the digital video camera from condensation, when moving from a cold to a warm place, be sure to keep it in a sealed plastic bag. Open the bag and take it out when the camera reaches the indoor temperature.

3. TV programs, movies, music, images and other resources may be protected by copyright; therefore, without prior permission, do not distribute copyrighted materials.

System requirements

When utilizing the Arcsoft software that is included with the camera, be sure the computer you are using meets the below system requirements:

Operation System	Win2000,XP, Vista, Windows 7
CPU	Above Intel PIII667 or CPU of equal performance
Memory	Above 128 MB
Sound card and display card	DirectX8 or above.
CD-ROM	4x speed or above
Hard Disk	1 GB space above useable
Other	One standard USB 1.1 or USB 2.0 port

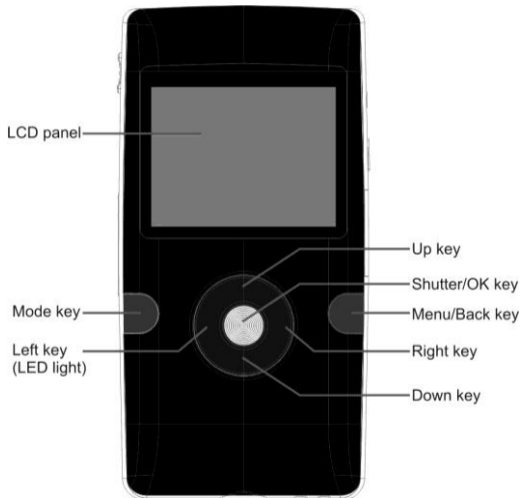
Memories on TV 4 Software

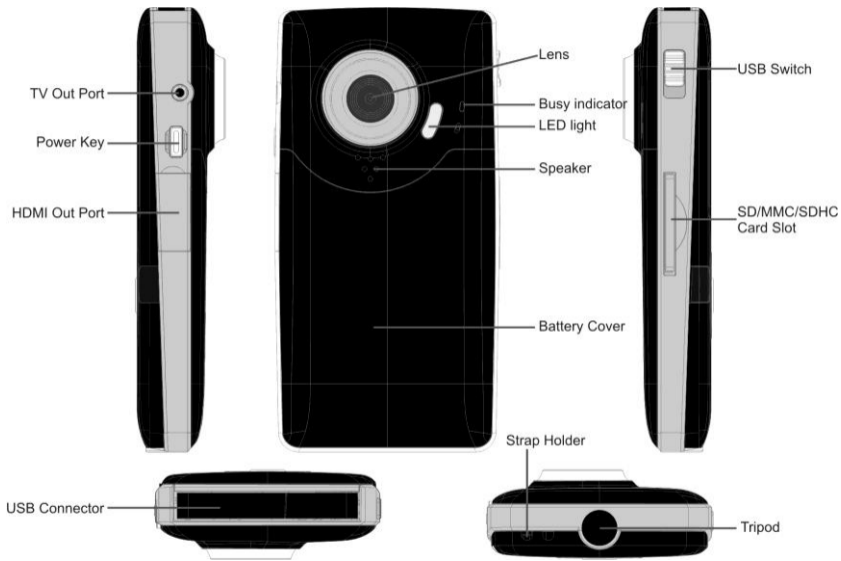
The below chart is the minimum system requirements for the Memories on TV 4 software which is also included in the giftbox:

Operation System	Microsoft Windows XP, Vista, Windows 7
CPU	Intel Pentium II 300mHz or faster
Memory	64 MB RAM (128 MB Preferred)
Sound card and display card	DirectX8.1 or above.
CDR/RW	4x speed or above to burn discs
Hard Disk	36 MB available hard disk space
MOV Support	Quicktime 6 and above

Getting to know your camera

1. Appearance and Buttons

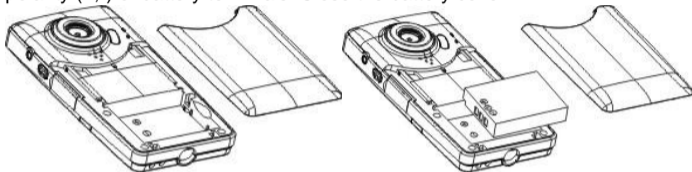




2. Basic operation

2.1 Installing the battery

Press / slide down the battery cover and insert the included lithium battery. Align with correct polarity (+,-) of battery terminals. Close the battery cover.



2.2 Charging the battery

1. Power off the camera.
2. Connect the camera to the computer USB port or to a power adapter with the USB cable to charge the battery.
3. During charging, the busy red light will be on. The busy light is located on the top of the digital video camera to the left of the lens as shown on page 7. The light will turn off when the battery is fully charged.

4. Charge the camera for about 3 hours to get maximum battery power. Battery lasts as long as 2 hours under normal usage.

2.3 Using a SD/MMC/SDHC card

Turn your camcorder OFF before inserting / removing an SD Card. Insert a memory card into the SD/MMC/SDHC card slot. Push it down until the card stays latched. Do not force – check card's position according to the position mark on the camera.

To remove card, push card inward and it will pop out automatically.

- Note that the SD Card has a tiny LOCK switch on the side. Set the switch to the un-LOCK position to store recorded videos and still pictures.



2.4 Powering on/off

In the power-off state, press and hold the power key to turn the camera on.

In the power-on state, press the power key to turn the camera off.

The camera will turn off automatically if it is on and left idle for 1 minute.

In power-on state, when the battery level is very low, the camera can turn off after several seconds. You must recharge the battery when this happens.

2.5 Video record

Your camera will automatically go to record mode after it is powered on. To record a video, press the shutter key to start video recording. While recording, press the shutter key again to stop recording.

In video record mode, to change the resolution from 720p HD to VGA 640/480 and vice versa, press the right to get your desired setting. Press the left key to turn the Led light on or off. You can use the zoom feature by pressing the up or down key to zoom in or out on the image before you record or while you are recording.

Please note the digital zoom feature degrades the picture the more you zoom in.

2.6 Playback videos or photos

Press the mode key to change modes, from video mode to playback mode. Once in playback mode, press the ◀ key or ▶ key to select the desired file. When viewing a video clip, press the OK key to begin playing. Press the ◀ key to rewind and the ▶ key to fast forward. Press the up key to return back to normal speed. Press the OK key to pause and resume playing. Press the down key to stop playing the video.

Press the down key again to see thumbnails of all of your videos.

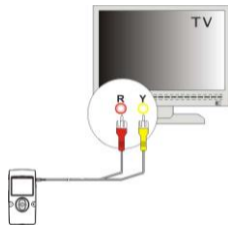
When viewing a Still photo, press the up or down key to zoom in or out of the image. While zooming, pressing the OK key can enter pan mode. At this time you can press the direction key to move the photo to view in LCD.

2.7 Still photos

Press the Mode key to switch from playback mode to still photo mode (5MP). Press the left key to turn the Led light on or off. In still photo mode, press the shutter key to take a picture. Press the up or down key to zoom in or out of the image.

2.8 Video output

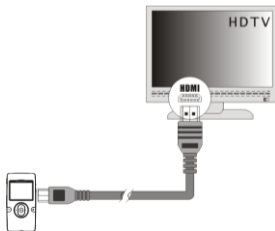
After the camera is powered on, insert the terminal of the TV cable into the TV output port of the camera. The yellow port of the other terminal should be connected to the VIDEO IN port of the TV. The red (or white) port of the other terminal should be connected to the AUDIO IN port of the TV as shown in this illustration.



2.9 HDMI output

If you want to output the video and sound from the video camera to an HD TV, insert a HDMI cable (not included) to the HDMI port of the camcorder and connect the other terminal of the HDMI cable to the HD TV.

Note: During the period of HDMI output, the video camera can only enter playback mode (you will not be able to



record while the HDMI cable is connected).

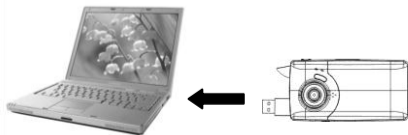
2.10 Delete files

In playback mode, press the Menu key to start menu-setup, and then choose the delete item to delete files.

3. Connect to PC

3.1 Turn the camcorder on. Slide the USB switch up to extend the USB connector.

3.2 Insert the camera's USB connector into computer's USB port, or use the supplied USB extension cable to make the connection.



4. Download files from the camera to PC

- 4.1 After connecting to a computer, go to "My Computer" and open the "Removable Disk" icon. The videos or photos will be saved in the \DCIM\ 100DSCIM folder in the removable disk. Choose the desired file in the 100DSCIM folder and copy (drag with mouse) it into a folder of your choice on your computer.
- 4.2 You can use ArcSoft Meidalmpression to edit videos or photos.
- 4.3 ArcSoft Meidalmpression can be installed from the CD included.

User Preferences/Setup Options

Light Frequency	This value is set to 60 Hz as it is the standard light frequency value for the United States, You can change this to 50 Hz for other countries.
Date & Time	Set the current date and time and adjust the date display. This date and time will be attached to the video files so you can see when the video files were taken.
Language	Set the language in which the User Preferences Menu will be displayed.
TV Out	Set the TV mode on your camera. The camera is set to NTSC mode which is standard in the United States.
USB	Set the USB option to Computer or Printer. The USB is set to computer so that your computer will recognize the digital video camera when plugging it in. there is an option to change from Computer mode to Printer Mode.

Format	Erase all data on the installed memory card.
Reset All	Reset all user preferences to defaults.

Light Frequency

Do not change the frequency from 60 Hz (default) unless you are outside of the United States. To change the frequency, click the Menu button to see your setup options. Press the right button and scroll down to the Light Frequency option. Press the Shutter key. You will see the 2 frequency options. Click the Shutter key on your desired frequency option (60 or 50) to confirm your selection.

To Set the Date and Time

If you would like to have each of your files stamped with the date, please do the following-

- 1- When in record or still mode, press the menu key.
- 2- When the yellow menu screen appears, press the right arrow.
- 3- Now press the minus sign key down twice until Date and Time is highlighted on screen.

- 4- Press the shutter key.
- 5- Now you can set the date and time by scrolling up or down on the desired highlighted field. The camera will start with the year. Simply press right or left to change the highlighted field.
- 6- When you are done setting the calendar, press the shutter key to set.
- 7- To get out of the calendar screen, press the menu key again to return to the main menu and then again to return to record mode.

Language

Your camera default only English nation language.

TV Out

To change the TV Mode on your camera, press the Menu key to see your setup options. Press the right key and scroll down to the TV Out option. Press the Shutter Key to see the TV Out options which are NTSC and PAL. Scroll up or down between the two options. When your preferred option is highlighted, press the Shutter Key to confirm your selection. Please note that the camera is set to NTSC which is standard in the United States. Do not change to PAL mode unless you are outside of the United States.

USB

Your USB is set to Computer mode. This means that your computer will recognize your digital video camera when you plug it into the USB port of your computer. To change from Computer Mode to Printer mode, press the Menu Key to see your setup options. Press the Right key and scroll down to the USB option. Press the Shutter key and press it again once your desired option is highlighted (Computer or Printer).

Please note that the Printer mode will only work with certain printers. Most printers will not recognize your digital video camera when you plug it into its USB port.

Format

To erase the data from your SD card, press the Menu key to see your setup options. Press the Right key and scroll down to the Format option. Press the Shutter key once. Scroll up to the Yes option and press the Shutter key again to confirm the action. Your files will be deleted.

Reset All

To reset all of the User preferences to the way they were when you first got your camera (to the defaults), press the Menu key to see your setup options. Press the Right key and scroll down to the Reset All option. Press the Shutter key. Press the Shutter key on the Yes option to confirm your action of resetting all of the preferences.

Application of attached Software

1. Introduction interface for software installation

Put the CD into the CD-ROM of a computer, and then the following menu will appear:

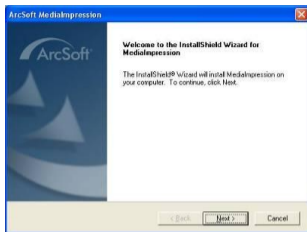


- If the above screen does not show up, click the **autorun.exe** program under the directory of the CD.

2. MediaImpression Installation and Use

Install MediaImpression:

Click "Install MediaImpression" button and complete the installation as per the tips.



After installation, please restart the computer.

Run MediaImpression:

Double click the  icon on the desktop or follow “Start → Programs” to open:



After starting MediaImpression, click “Import” to import the media.



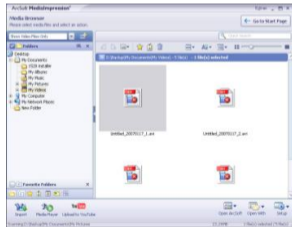
Choose the video camera storage and choose the output location.



Choose a file and click import. The selected file will be stored in the output location.



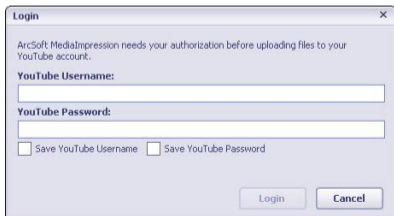
Click “Go to start page” to return to the main screen. Then click “Video” or “All media” to use the “You Tube” function.





Choose a file and click the “upload to YouTube.”





Enter your username and password to login to YouTube to execute the upload.



3. UEZ Link Introduction and Use

UEZ Link can help you easily upload your videos or photos to  or . There are two ways to use the software:

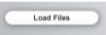
I When connecting to a PC, UEZ link will pop-up automatically. Please make sure that your PC will not block any pop-up software. Otherwise it will not work.

II Double click the icon  from the CD to run. You can also copy files to your PC, and then double click the icon  to run.

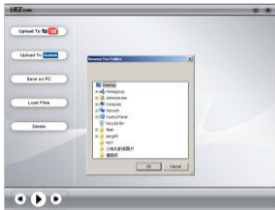
The interface below will appear:



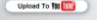
3.1 Load Files

UEZ link will automatically load all the files in the DCIM folder . You can load the desired files by clicking the button  , and then choosing the files. Once the “Browse for folder” window opens, choose “Computer” then the driver where the files are located. (This

should be a “removable disk”, such as D, E, F...) Then choose the files.




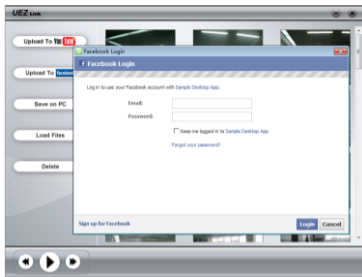
3.2 Upload to

Choose the file, and then click the button  to upload your files. Hold the Control key and click another file to choose multiple files to upload. Please make sure that you have registered and activated an account for YouTube to upload videos. Otherwise, you will not be able to upload.

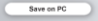


3. 3 Upload to

Choose the file, and then click the button  to upload your files. Hold the Control key and click another file to choose multiple files to upload. Please make sure that you have registered and activated the account for facebook to upload files. Otherwise it will not work.



3.4 Save on PC

Choose the file, and then click the button  to save on PC. Hold the Control key and click another file to choose multiple files to save.



3.5 Delete

Choose the file, and then click the button  to delete the files. Hold the Control key and click another file to choose multiple files to delete.



Product specifications

Image sensor	1.3 Mega Pixels
Function mode	Record video, Record still photo, playback, mobile disk
Lens	F2.8,f=3.1mm
Focus range	120cm~infinite
Digital focusing	4x
Shutter	Electronic
LCD display	2.0 inch TFT Display
Resolution	Video: HD(1280x720), VGA(640x480), Still photo: 5.0MP
White balance	Automatic/Manual
Exposure	Automatic
File format	(Video)AVI, (Photo)JPEG
Video out	TV out, HDMI out
Storage media	SD/MMC/SDHC card(max. 16GB)
USB port	USB 2.0 port
Dimension (LxWxH)	111mm x 57mm x 19.5mm

**Still having trouble with your camera?
Please call or email customer support:**

📞 1-877-768-8483 (Toll Free)

Monday - Thursday: 9AM - 5PM (EST)

Friday: 9AM - 3PM (EST)

or

✉ via e-mail at cs@southerntelecom.com

FCC Part 15

This equipment has been tested and found to comply with the requirements for a Class B digital device under Part 15 of the Federal Communications Commission (FCC) rules. These requirements are intended to provide reasonable protection against harmful interference in a residential installation. This equipment generates, uses and can radiate radio frequency energy and, if not installed and used in accordance with the instructions, may cause harmful interference to radio communications. However, there is no guarantee that interference will not occur in a particular installation. If this equipment does cause harmful interference to radio or television reception, which can be determined by turning the equipment off and on, the user is encouraged to try to correct the interference by one or more of the following measures:

- Re-orient or relocate the receiving antenna.
- Increase the separation between the equipment and receiver.
- Connect the equipment into an outlet on a circuit different from that to which the receiver is connected.
- Consult the dealer or an experienced radio/TV technician for help.

Do not attempt to repair or modify this equipment.

Warning: Changes or modifications to this equipment not expressly approved by the party responsible for compliance could void the user's authority to operate the equipment.

Always follow these basic safety precautions when using your camera. This will reduce the risk of product damage and personal injury.

- Do not disassemble, repair or modify the camera by yourself. Refer servicing to qualified personnel.
- If the LCD display breaks, do not touch the glass or liquid, and contact customer support.
- The use of a NON- RECOMMENDED accessory may cause fire, electric shock, or injury. For approved accessories, please contact customer support.
- Keep the camera away from direct sunlight and any direct heat source.
- Do not expose the camera to rain or moisture.
- Avoid using the camera in dry environments to avoid static.
- Never apply heavy impact on the camera, or place it on a magnet.
- When connecting the camera to a computer or TV, route the cable so that people and pets are not likely to trip over it.
- Clean only with a dry cloth. Make sure the camera is turned off before cleaning. Do not use a liquid cleanser.

Important Battery Precautions

- Use only the type of battery specified in this user manual.
- Batteries may present a risk of fire, explosion, or chemical burn if abused. Do not try to charge a battery that is not intended to be recharged.
- Do not dispose of the battery (ies) in a fire. They may explode. Check with local codes for disposal instructions.
- Non-rechargeable batteries, such as alkaline batteries, may leak if left in your product for a long period of time. Remove the batteries from the product if you are not going to use it for a month or longer.
- If your product uses more than one battery, do not mix different types of batteries. Make sure you replace the old, with all new batteries. Mixing different types of batteries or inserting them incorrectly, may cause them to leak.
- In the event that the battery is leaking, do not handle the device with your bare hands. Contact the service center for help since the liquid may remain in the player. If your body or clothes had contact with the battery liquid, wash it off thoroughly with water. Also, if some liquid gets into your eyes, do not rub your eyes but immediately wash them with clean water and consult a doctor.
- Please help to protect the environment by recycling or disposing of batteries according to federal, state, and local regulations.

Limited Warranty

In the unlikely event that this product is defective, or does not perform properly, you may within **90** days from your original date of purchase return it to the authorized service center for repair or exchange.


This camera has water tight seals which if used improperly void the 90 day limited warranty. Please refer to "Water resistant covers" for proper use and handling. If the camera has been damaged by liquid, the service for such liquid damage is not covered by Southern Telecom Inc.

TO OBTAIN WARRANTY SERVICE:

- **Provide proof of the date of purchase within the package (Dated bill of sale).**
- **Prepay all shipping costs to the authorized service center, and remember to insure your return.**
- **Include a return shipping address (no P.O. Boxes), a telephone contact number, and the defective unit within the package.**
- **Describe the defect or reason you are returning the product.**

Your product will be repaired or replaced, at our option, for the same or similar model of equal value if examination by the service center determines this product is defective. Products received damaged as a result of shipping will require you to file a claim with the carrier.

The shipping address of the authorized service center is:

 **Southern Telecom, Inc.**
ATTN: Customer Service (2nd Floor)
14-C 53rd Street
Brooklyn, NY 11232

Warranty service not provided

This warranty does not cover damage resulting from accident, misuse, abuse, improper installation or operation, lack of reasonable care, and unauthorized modification. This warranty is voided in the event any unauthorized person opens, alters or repairs this product. All products being returned to the authorized service center for repair must be suitably packaged.

Limitation of Warranty:


- THE WARRANTY STATED ABOVE IS THE ONLY WARRANTY APPLICABLE TO THIS PRODUCT. ALL OTHER WARRANTIES, EXPRESS OR IMPLIED (INCLUDING ALL IMPLIED WARRANTIES OF MERCHANTABILITY OR FITNESS FOR A PARTICULAR PURPOSE) ARE HEREBY DISCLAIMED. NO VERBAL OR WRITTEN INFORMATION GIVEN BY SOUTHERN TELECOM INC. IT'S AGENTS, OR EMPLOYEES SHALL CREATE A GUARANTY OR IN ANY WAY INCREASE THE SCOPE OF THIS WARRANTY.
- REPAIR OR REPLACEMENT AS PROVIDED UNDER THIS WARRANTY IS THE EXCLUSIVE REMEDY OF THE CONSUMER. SOUTHERN TELECOM INC. SHALL NOT BE LIABLE FOR INCIDENTAL OR CONSEQUENTIAL DAMAGES RESULTING FROM THE USE OF THIS PRODUCT OR ARISING OUT OF ANY BREACH OF ANY EXPRESS OR IMPLIED WARRANTY ON THIS PRODUCT. THIS DISCLAIMER OF WARRANTIES AND LIMITED WARRANTY ARE GOVERNED BY THE LAWS OF THE STATE OF NEW YORK. EXCEPT TO THE EXTENT PROHIBITED BY APPLICABLE LAW, ANY IMPLIED WARRANTY OF MERCHANTABILITY OR FITNESS FOR A PARTICULAR PURPOSE ON THIS PRODUCT IS LIMITED TO THE APPLICABLE WARRANTY PERIOD SET FORTH ABOVE.

Some states do not allow the exclusion nor limitation of incidental or consequential damages, or limitations on how long an implied warranty lasts so the above limitations or exclusions may not apply to you. This warranty gives you specific legal rights, and you also may have other rights that vary from state to state.



Made in China / Designed in the USA
Manufactured by: Southern Telecom, Inc. Brooklyn, NY 11232
© 2011 Southern Telecom, Inc. All rights reserved.

YouTube™ is a registered trademark of YouTube, LLC.
This product is not affiliated with, or endorsed by YouTube™.

Vue® and MediaManagerHD software are trademarks of Vue, Inc.
 (The SD logo is a trademark of the SD Card Association)
Other trademarks and trade names are those of their respective owners.

All screen images are simulated.

Free Manuals Download Website

<http://myh66.com>

<http://usermanuals.us>

<http://www.somanuals.com>

<http://www.4manuals.cc>

<http://www.manual-lib.com>

<http://www.404manual.com>

<http://www.luxmanual.com>

<http://aubethermostatmanual.com>

Golf course search by state

<http://golfingnear.com>

Email search by domain

<http://emailbydomain.com>

Auto manuals search

<http://auto.somanuals.com>

TV manuals search

<http://tv.somanuals.com>