

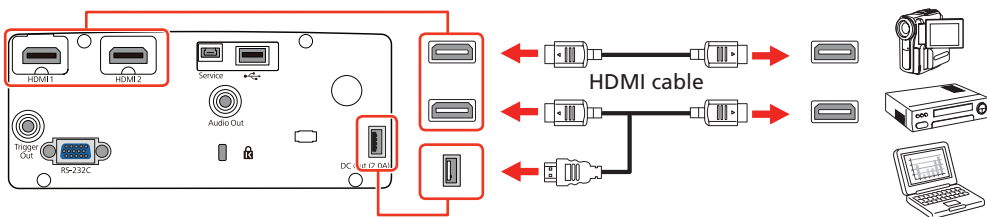
## Quick Setup

**IMPORTANT:** Before using this product, make sure you read these instructions and the safety instructions in the online *User's Guide*.

**Note:** These illustrations show the Home Cinema 3800, but the instructions are the same for the Home Cinema 3200 unless otherwise noted.

## Connect the projector

Connect two video devices or computers simultaneously with a commercially available HDMI cable. Use the Source buttons on the remote control or the **Home** and arrow buttons on the projector to switch between them.



**Note:** The DC Out (2.0A) port provides power to streaming media devices.

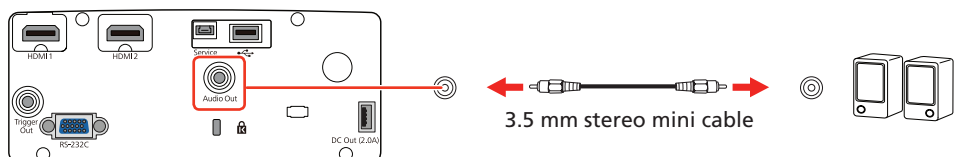
For more details and additional connection types, see the online *User's Guide*.

## Connect audio

### External speakers

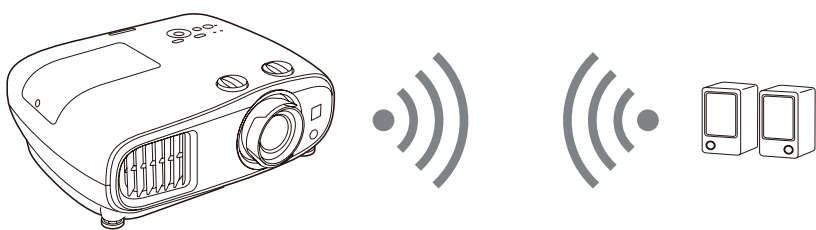
You can connect the projector to external self-powered speakers through the **Audio Out** port.

**Note:** If you connect external speakers to the Home Cinema 3800, the projector's internal speakers are muted.



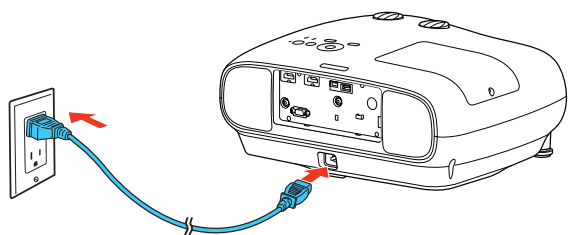
### Bluetooth® devices

You can pair a Bluetooth device to the projector to output audio from a device connected to one of the HDMI ports. See the online *User's Guide* for instructions.

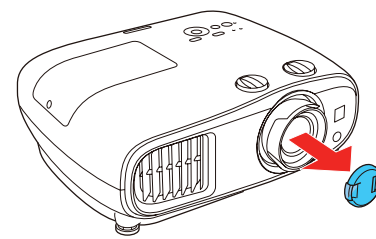


## Turn on your equipment

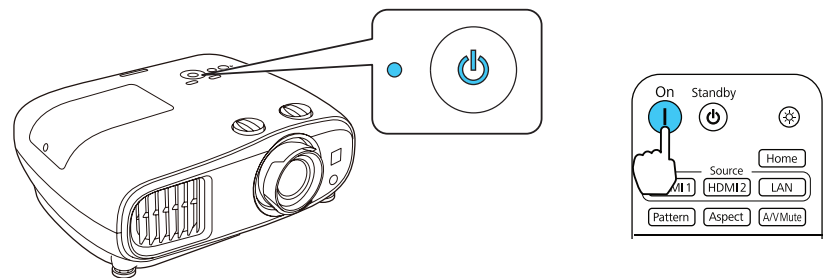
- 1 Turn on your video source or computer.
- 2 Plug in the projector.



- 3 Remove the lens cap.

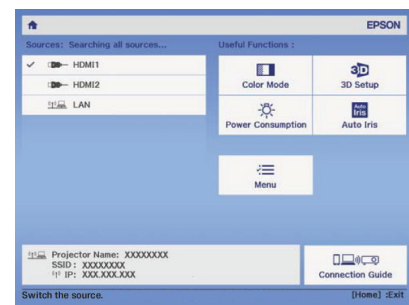


- 4 Press the power button on the projector or the **On** button on the remote control. The power light flashes blue, then stays on.



**Note:** To shut down the projector, press the power button on the projector or the **Standby** button on the remote control, then press the button again to confirm, if necessary. Wait for the projector to cool down before unplugging it.

- 5 Use the arrow buttons on the projector or remote control to highlight any of the options that appear on the Home screen, then press **Enter** to select it. You can switch between projection sources and quickly access various adjustment options from this screen.



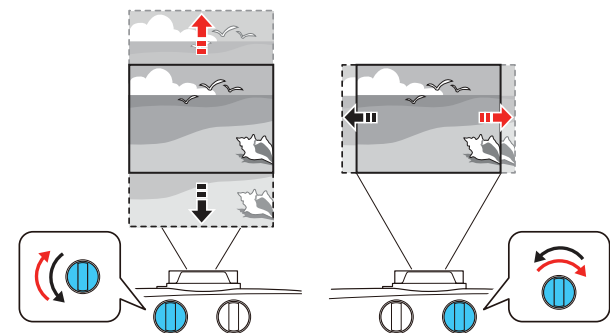
- 6 The default language of the menu system is English. To select another language, press the **Menu** button on the projector or remote control. Select **Extended** and press **Enter**. Select **Language** and press **Enter**. Select your language and press **Enter**. Press the **Menu** button to exit the menu system.

## Adjust the image

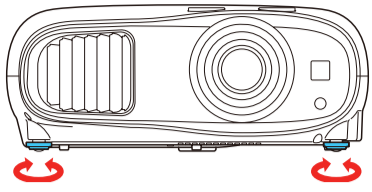
- 1 If you don't see an image, press one of the Source buttons on the remote control or the **Home** and arrow buttons on the projector to select the image source.

**Note:** If you still see a blank screen or have other display problems, see the troubleshooting tips on the back of this sheet.

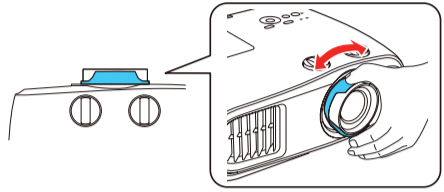
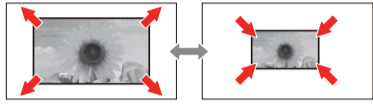
- 2 For the best image quality, place the projector directly in front of the center of the screen, facing the screen squarely. If this is not possible, turn the horizontal and vertical lens shift dials to adjust the image position and center it on the screen.



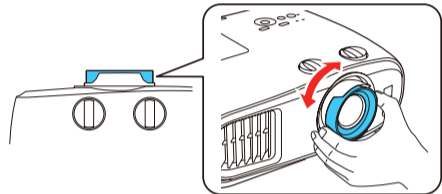
- 3 If the image is tilted, adjust the front feet as shown below.



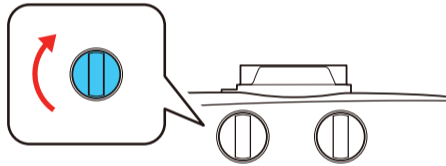
- 4 Turn the zoom ring to reduce or enlarge the image.



- 5 Turn the focus ring to sharpen the image.

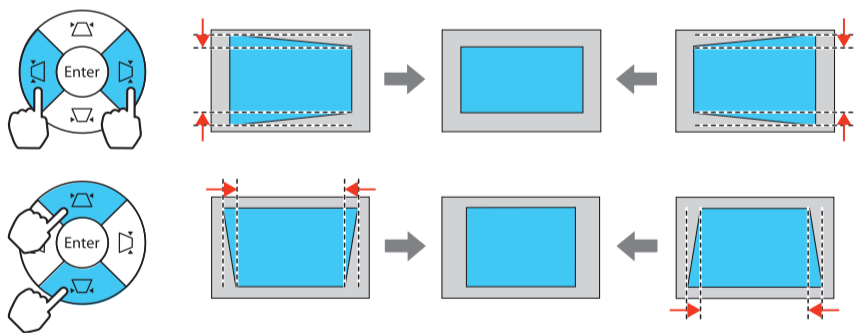


- 6 If your image is uneven on the sides, you can use the keystone correction feature to adjust the image. To use this feature, you must first set the lens to the center-top position using the lens shift dials.

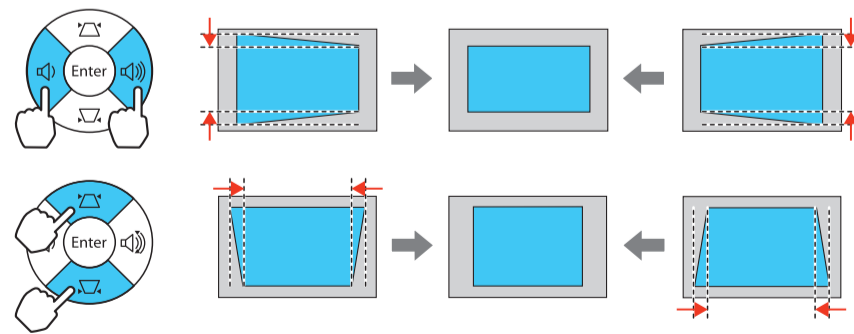


Press the or button on the projector to display the keystone correction screen. Press the or button (Home Cinema 3200), or the or button (Home Cinema 3800) to correct for horizontal keystone distortion. Press the or button to correct for vertical keystone distortion.

#### Home Cinema 3200

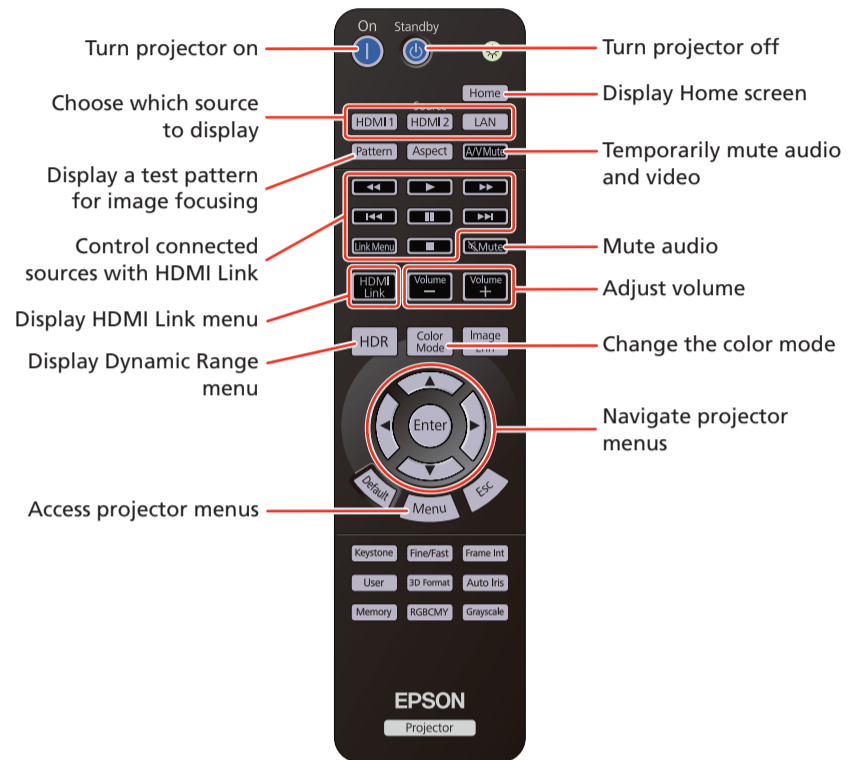
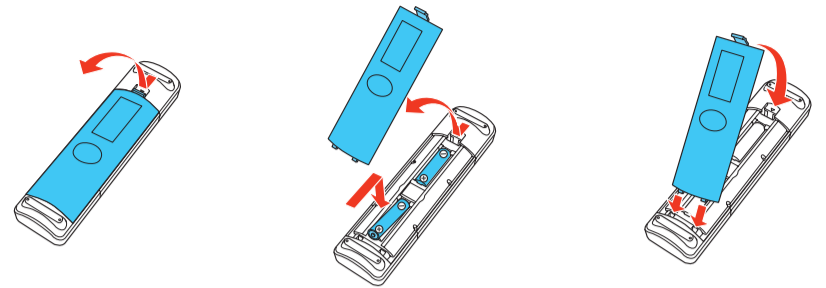


#### Home Cinema 3800



## Using the remote control

Make sure the batteries are installed as shown (two AA batteries).



For more information on using the remote control, see the online *User's Guide*.

## Viewing 3D images

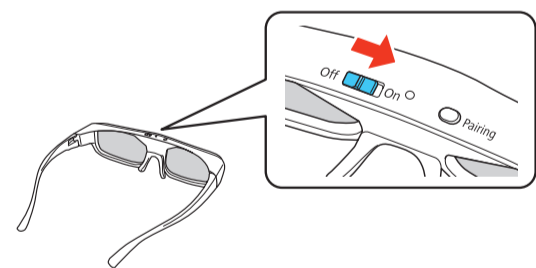
To view 3D content, you must first connect a 3D-compatible video device to one of the HDMI ports on your projector. You will also need a pair of Epson® (part number V12H548006) or Epson-compatible RF 3D active shutter glasses.

- 1 Turn on and begin playback on the 3D-compatible video device.

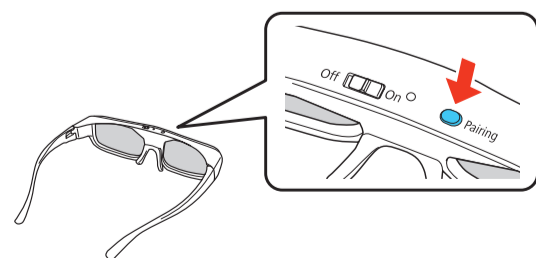
**Note:** Make sure you set the video device to play content in 3D mode.

- 2 Press the **3D Format** button on the remote control, if necessary.

- 3 Slide the power switch on your 3D glasses to the **On** position.






**Note:** If the glasses don't automatically display 3D content, you may need to pair them with the projector. Move the glasses within 10 feet (3 m) of the projector, then press and hold the **Pairing** button on the 3D glasses for at least 3 seconds. The status light on the glasses will alternately flash green and red, then remain green for 10 seconds if pairing is successful.



See the online *User's Guide* for more information on adjusting 3D images.



# Troubleshooting

- If you see a **No signal** message after turning on the projector, make sure your video device or computer is properly connected.
  - If you see a blank screen, check the following:
    - Make sure the  power light on the projector is blue and not flashing.
    - Press the  power button to wake the projector from standby or sleep mode, if necessary.
    - Press one of the Source buttons on the remote control or the **Home** and arrow buttons on the projector to switch to the correct image source, if necessary.
  - If you see a blank screen when a computer is connected, check the following:
    - On some Windows® laptops, you may need to hold down the **Fn** key and press **F7** or the function key that lets you display on an external monitor. It may be labeled **CRT/LCD** or have an icon such as .

On Windows 7 or later, hold down the Windows key and press **P** at the same time, then click **Duplicate**.
  - If you're using a Mac laptop, open **System Preferences** and select **Displays**. Click the **Arrangement** tab and select the **Mirror Displays** checkbox.
- If the keystone correction feature doesn't correct the image, make sure you first set the lens to the center-top position using the horizontal and vertical lens shift dials.
- If 3D images aren't displaying properly, check the following:
  - Press the **Menu** button on the projector or remote control, select the **Signal** menu, then **3D Setup**, then select **3D Display**. Make sure that the **3D** option is selected. You may also need to set the Diagonal Screen Size setting in the Signal menu. See the online *User's Guide* for more information.
  - Make sure to wear the 3D glasses within 32 feet (10 m) of the projector.
  - Check that your 3D glasses have not entered standby mode. Slide the power switch on the 3D glasses into the **Off** position, then back to the **On** position.
  - Check that your video device and media are both 3D-compatible. Refer to the documentation that came with your video device for more information.
- If the projector does not respond to remote control commands, make sure the batteries in the remote control are installed correctly. Replace the batteries, if necessary.

## Where to get help

### Manual

For more information about using the projector, you can view or download the online manual from the Epson website, as described below.

### Internet support

Visit [www.epson.com/support](http://www.epson.com/support) (U.S.) or [www.epson.ca/support](http://www.epson.ca/support) (Canada) and search for your product to download software and utilities, view the manual, get FAQs and troubleshooting advice, or contact Epson.

### Telephone support services

To use the Epson PrivateLine® Support service, call (800) 637-7661. This service is available for the duration of your warranty period. You may also speak with a support specialist by calling (562) 276-4394 (U.S.) or (905) 709-3839 (Canada).

Support hours are 6 AM to 8 PM, Pacific Time, Monday through Friday, and 7 AM to 4 PM, Pacific Time, Saturday. Days and hours of support are subject to change without notice. Toll or long distance charges may apply.

### Registration

Register today to get product updates and exclusive offers. You can register online at [www.epson.com/webreg](http://www.epson.com/webreg).

## Optional accessories

For a list of optional accessories, see the online *User's Guide*.

You can purchase RF 3D glasses (part number V12H548006) or other accessories from an Epson authorized reseller. To find the nearest reseller, call 800-GO-EPSON (800-463-7766). Or you can purchase online at [www.epsonstore.com](http://www.epsonstore.com) (U.S. sales) or [www.epsonstore.ca](http://www.epsonstore.ca) (Canadian sales).

## Notices

### Bluetooth Safety and Specifications

Contains Bluetooth module model: DBUB-E207

This document provides safety instructions and describes the specifications. Read this document carefully before use to ensure your safety and product performance. Data transmission is always initiated by software, which is then passed down through the MAC, through the digital and analog baseband, and finally to the RF chip. Several special packets are initiated by the MAC. These are the only ways the digital baseband portion will turn on the RF transmitter, which it then turns off at the end of the packet. Therefore, the transmitter will be on only while one of the aforementioned packets is being transmitted. In other words, this device automatically discontinues transmission in case of either absence of information to transmit or operational failure.

This equipment is restricted to indoor operation only.

### U.S.

Contains FCC ID: BKMAE-E207

This device complies with Part 15 of the FCC Rules. Operation is subject to the following two conditions: (1) This device may not cause harmful interference, and (2) this device must accept any interference received, including interference that may cause undesired operation.

This equipment has been tested and found to comply with the limits for a Class B digital device, pursuant to Part 15 of the FCC Rules. These limits are designed to provide reasonable protection against harmful interference in a residential installation. This equipment generates, uses and can radiate radio frequency energy and, if not installed and used in accordance with the instructions, may cause harmful interference to radio communications. However, there is no guarantee that interference will not occur in a particular installation. If this equipment does cause harmful interference to radio or television reception, which can be determined by turning the equipment off and on, the user is encouraged to try to correct the interference by one of the following measures:

- Reorient or relocate the receiving antenna.
- Increase the separation between the equipment and receiver.
- Connect the equipment into an outlet on a circuit different from that to which the receiver is connected.
- Consult the dealer or an experienced radio/TV technician for help.

**Caution:** Changes or modifications not expressly approved by the party responsible for compliance could void the user's authority to operate this equipment. Properly shielded and grounded cables and connectors must be used for connection to host computers and / or peripherals in order to meet FCC emission limits.

This transmitter must not be co-located or operating in conjunction with any other antenna or transmitter.

This equipment complies with FCC radiation exposure limits set forth for an uncontrolled environment and meets the FCC radio frequency (RF) Exposure Guidelines. This equipment should be installed and operated keeping the radiator at least 7.8 inches (20 cm) or more away from person's body.

### Canada

Contains IC: 1052D-E207

CAN ICES-3(B)/NMB-3(B)

This device complies with Industry Canada license-exempt RSSs. Operation is subject to the following two conditions: (1) This device may not cause interference; and (2) this device must accept any interference, including interference that may cause undesired operation of the device.

This equipment complies with IC radiation exposure limits set forth for an uncontrolled environment and meets RSS-102 of the IC radio frequency (RF) Exposure rules. This equipment should be installed and operated keeping the radiator at least 7.8 inches (20 cm) or more away from person's body.



EPSON is a registered trademark and EPSON Exceed Your Vision is a registered logomark of Seiko Epson Corporation. PrivateLine is a registered trademark of Epson America, Inc.

Windows is a registered trademark of Microsoft Corporation in the United States and/or other countries.

Mac is a trademark of Apple Inc., registered in the U.S. and other countries.

General Notice: Other product names used herein are for identification purposes only and may be trademarks of their respective owners. Epson disclaims any and all rights in those marks.

This information is subject to change without notice.

© 2019 Epson America, Inc., 6/19

Printed in XXXXXX

CPD-57545

## Free Manuals Download Website

<http://myh66.com>

<http://usermanuals.us>

<http://www.somanuals.com>

<http://www.4manuals.cc>

<http://www.manual-lib.com>

<http://www.404manual.com>

<http://www.luxmanual.com>

<http://aubethermostatmanual.com>

Golf course search by state

<http://golfingnear.com>

Email search by domain

<http://emailbydomain.com>

Auto manuals search

<http://auto.somanuals.com>

TV manuals search

<http://tv.somanuals.com>