

## Start Here

Follow the steps on this card to get started with your BrightLink:

- 1 Connect your computer and turn on the projector
- 2 Make sure the software is installed
- 3 Calibrate
  - Using the remote control
- 4 Use the interactive pen
- 5 Use PC Free Annotation

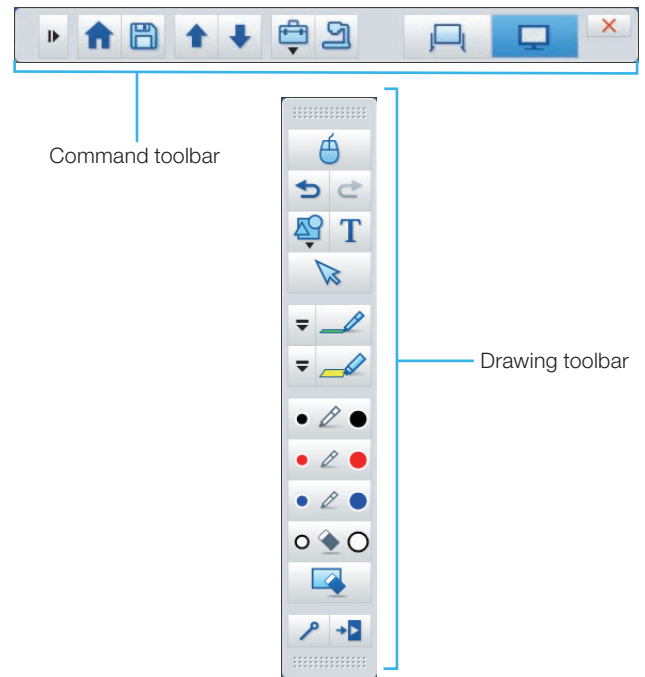
## BrightLink Interaction

The projector control toolbar lets you control the projector from the screen just as you would using the remote control.



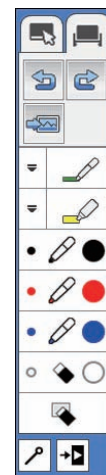
The BrightLink interactive pen turns any wall or table into an interactive area, with or without a computer.

- With a computer, you can use Easy Interactive Tools. This software lets you use the interactive pen as a mouse to annotate, save, and interact with content from your computer.



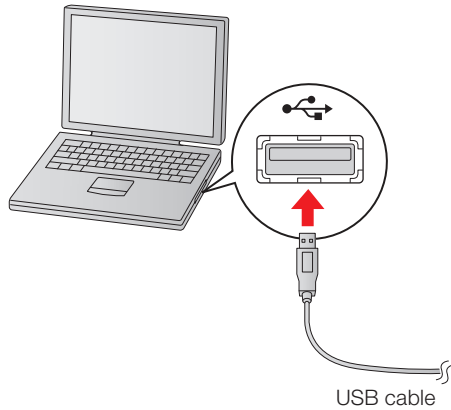
- Without a computer, you can use the toolbar that is built into the projector (PC Free Annotation). This lets you annotate images from a document camera, tablet, DVD player, or other source connected to your projector.

Students and colleagues can connect their own laptops and annotate on the fly using the built-in toolbar, without installing software.

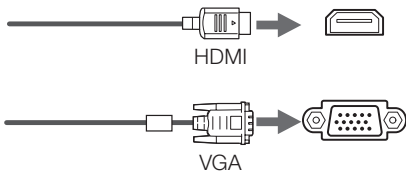



# 1 Connect Your Computer and Turn on the Projector

- 1 Connect the USB cable from the projector's **USB-B** port directly to any available USB port on your computer.






- 2 Connect an HDMI or VGA cable from the projector to your computer.




- 3 Turn on the projector by pressing the  power button on the remote control.

In Windows®, you may see messages about device drivers or new hardware.

- 4 The default language of the menu system is English. To select another language, press the **Menu** button on the remote control. Select **Extended** and press . Select **Language** and press . Select your language and press . Press the **Menu** button to exit the menu system.

- 5 Display an image from your computer. If the image doesn't appear, try one of the following:

- On some Windows laptops, you may need to hold down the **Fn** key on the keyboard and press **F7** or the function key that lets you display on an external monitor. It may have an icon such as , or it may be labelled **CRT/LCD**.
- On a Mac, you may need to open **System Preferences** and select **Displays**. Click the **Arrangement** tab and select the **Mirror Displays** check box.
- Try pressing the **Source Search** button on the remote control.

## ② Make Sure Interactive Software Is Installed

You may already have interactive software on your computer, or you may need to install it. For OSX, you need the Easy Interactive Driver and Easy Interactive Tools (or other interactive software). For Windows, you only need Easy Interactive Tools (or other interactive software).

Here's how to find out if the Easy Interactive Tools software is installed on your computer. (If the software is not installed, follow the steps in the next column.)


### OS X:

Look for the Easy Interactive Driver and Easy Interactive Tools folders in the Applications folder on your hard drive. If you see these folders, the Easy Interactive software is installed.

### Windows 8.x:

Navigate to the **Apps** screen and select **Easy Interactive Tools**.

### Other Windows versions:

Select  or **Start > All Programs** or **Programs > EPSON Projector > Easy Interactive Tools Ver. 3**. If you see Easy Interactive Tools Ver. 3, the software is installed.




**If you need to install the Easy Interactive Tools software, do one of the following:**

- Use the CD that came with the projector, labeled “EPSON Projector Software for Easy Interactive Function.”



- Download the most up-to-date version from:  
**epson.com/brightlinkdownloads** (U.S.)  
**epson.ca/brightlinkdownloads** (Canada)  
**global.latin.epson.com/soporte** (Latin America; site available in Spanish).

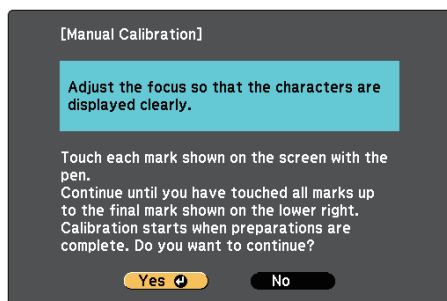
For more information about Easy Interactive Tools, see the online Easy Interactive Tool Tips sheet or the online *Easy Interactive Tools Operation Guide*.

**Note:** To use third party annotation software, tap the screen with the pen to activate the projector's built-in toolbar, then tap the  or  icon to open it. Tap the  icon to activate mouse control and use your third party software.

# 3 Calibrate

If the pen position and cursor location don't match, you can try auto calibration, or you can calibrate manually for even greater accuracy. You don't need a computer, and you won't need to calibrate again unless the projector or image is moved, or the image is resized.

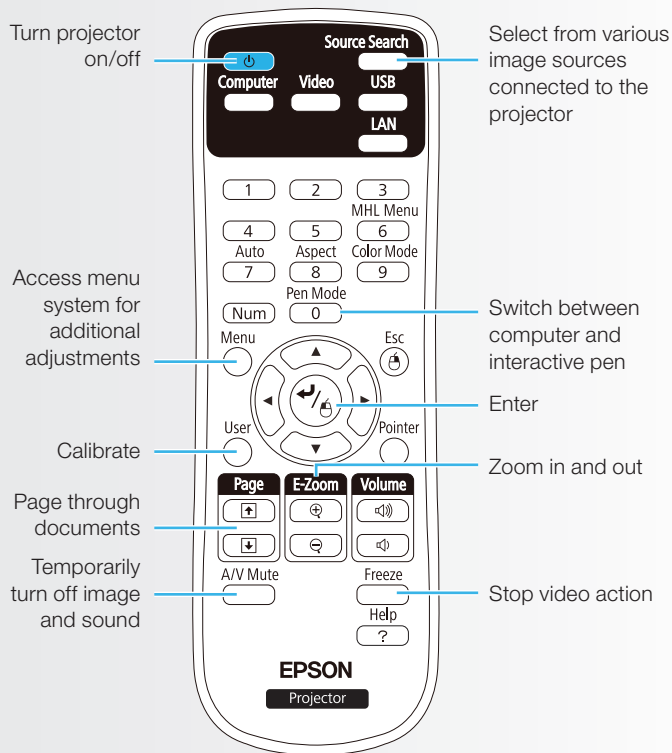
- 1 To start calibration, do one of the following:
  - Press the **User** button to start auto calibration, then wait until calibration is complete.
  - Follow the steps below to calibrate manually.
- 2 Press the **Menu** button on the remote control, select the **Extended** menu, and press ↵.
- 3 Select the **Easy Interactive Function** setting and press ↵.
- 4 Select **Manual Calibration**, then press ↵.
- 5 When you see this screen, press ↵ to select **Yes**.



- 6 Touch the circles on the screen with the pen to perform manual calibration.

For more detailed instructions, see the online BrightLink *User's Guide*.

## Using the Remote Control

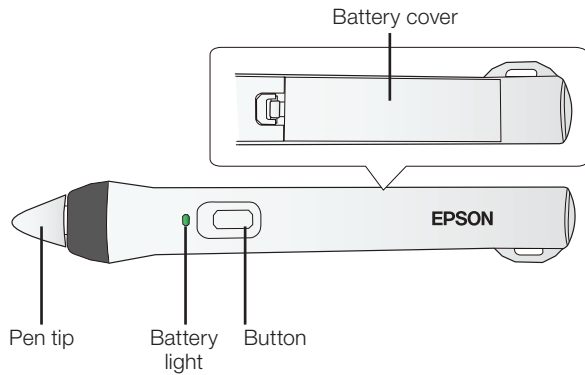


For more information on using the remote control:

- See the online BrightLink *User's Guide*.
- Go to the training section and watch a video or two at [epson.com/brightlinkvideos](http://epson.com/brightlinkvideos) (U.S.) or [epson.ca/brightlinkvideos](http://epson.ca/brightlinkvideos) (Canada).

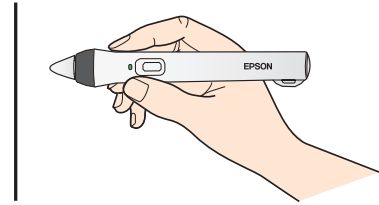
## 4 Use the Interactive Pen

Your projector came with one pen with an orange colored end (Interactive Pen A). You can purchase a second pen with a blue end (Interactive Pen B, part number V12H667010). Make sure one AA battery is installed in the pen.



- To turn on the pen, tap the pen tip or press the button on the side of the pen. The green light comes on briefly. If the battery is low, the light flashes.

- Hold the pen perpendicular to the board, as shown below.



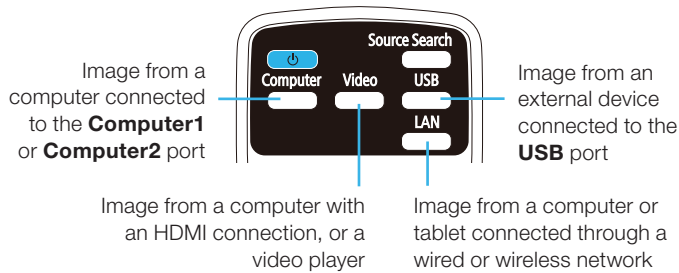
- To left-click, tap on the board.
- To double-click, tap twice.
- To right-click, press the button on the side of the pen.
- To click and drag, tap and drag with the pen.
- To move the cursor, hover over the board without touching it.
- When you are finished using the pen, simply place it in an area away from the projection screen.

**Note:** The pen turns off automatically after about 20 minutes of inactivity. Tap the pen tip or press the button on the side to turn the pen back on.

# 5 Use PC Free Annotation

The projector's built-in toolbar lets you annotate images from other devices that have been connected to the projector, such as a document camera, tablet, or other source.

- 1 Press one of the source buttons on the remote control to select the source for the image you want to annotate.



- 2 To activate the toolbar, tap the board with the pen.

- 3 Tap the or icon to open the toolbar. If you don't see the icon, tap the icon and then tap the icon.

**Note:** If you only see the icon, you are already in PC Free Annotation mode.

- 4 To close the toolbar, select the icon at the bottom of the toolbar.

**Note:** Many of the built-in tools are the same as Easy Interactive Tools, but fewer functions are available.

EPSON is a registered trademark and EPSON Exceed Your Vision is a registered logomark of Seiko Epson Corporation. BrightLink and PrivateLine are registered trademarks of Epson America, Inc.

Mac and OS X are trademarks of Apple Inc., registered in the U.S. and other countries.

General Notice: Other product names used herein are for identification purposes only and may be trademarks of their respective owners. Epson disclaims any and all rights in those marks.

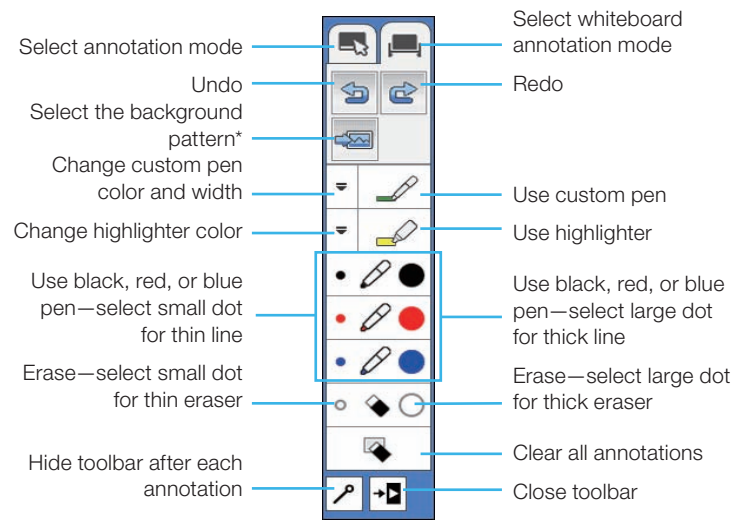
This information is subject to change without notice.

© 2014 Epson America, Inc., 8/14  
Printed in XXXXXX

CPD-41708

Two different toolbars are available in PC Free Annotation mode, one for annotation mode and one for whiteboard annotation mode.

- Annotation mode displays the built-in toolbar on whatever image is being projected.
- Whiteboard annotation mode lets you project a white or black screen or background pattern, and use the pen to write or draw as you would on a chalkboard or dry erase board.



\* In annotation mode, the select background tool does not appear.

## Need help?

The Epson® PrivateLine® service is for you!

All you have to do is call (800) 637-7661. This service is available for the duration of your warranty period.

You may also speak with a projector support specialist by dialing (562) 276-4394 (U.S.) or (905) 709-3839 (Canada).

Support hours are 6 AM to 8 PM, Pacific Time, Monday through Friday and 7 AM to 4 PM, Pacific Time, Saturday. Days and hours of support are subject to change without notice. Toll or long distance charges may apply.



\*412795200\*

## Free Manuals Download Website

<http://myh66.com>

<http://usermanuals.us>

<http://www.somanuals.com>

<http://www.4manuals.cc>

<http://www.manual-lib.com>

<http://www.404manual.com>

<http://www.luxmanual.com>

<http://aubethermostatmanual.com>

Golf course search by state

<http://golfingnear.com>

Email search by domain

<http://emailbydomain.com>

Auto manuals search

<http://auto.somanuals.com>

TV manuals search

<http://tv.somanuals.com>