

Start Here

Follow the steps on this card to get started with your BrightLink projector:

- 1 Connecting your computer and installing interactive software
- 2 Interacting with the screen
- 3 Using the built-in toolbar

BrightLink Interaction

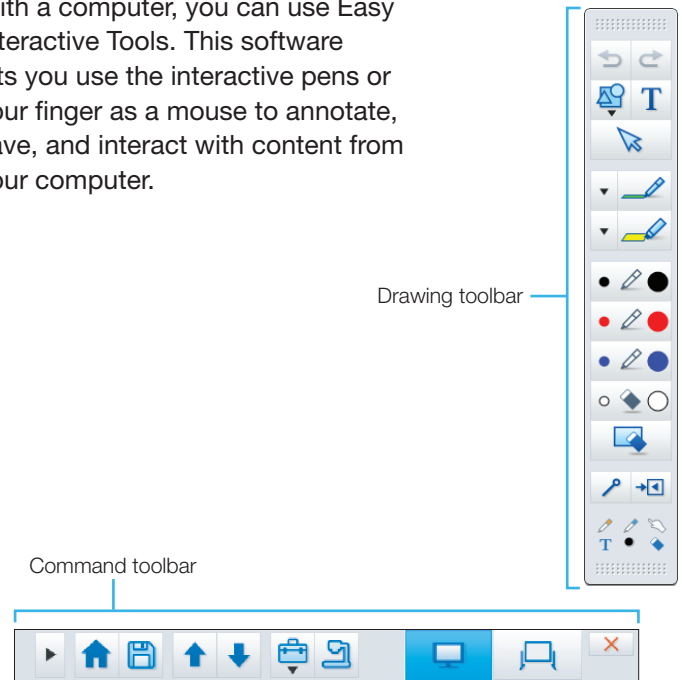
The BrightLink interactive pens turn almost any wall or table into an interactive area, with or without a computer.

The projector control toolbar lets you control the projector from the screen just as you would using the remote control.



Easy Interactive Tools

With a computer, you can use Easy Interactive Tools. This software lets you use the interactive pens or your finger as a mouse to annotate, save, and interact with content from your computer.




Built-in Toolbar

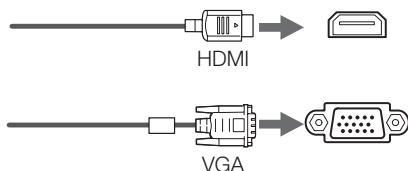
Without a computer, you can use the toolbar that is built into the projector (PC Free Annotation). This lets you annotate images from a document camera, tablet, DVD player, or other source connected to your projector.

Students and colleagues can connect their own laptops and annotate on the fly using the built-in toolbar, without installing software.



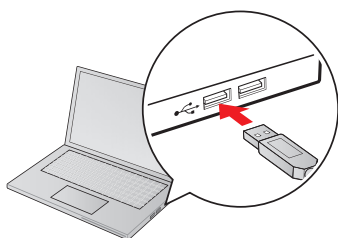
1 Connecting Your Computer and Installing Interactive Software





- 1 Turn on the projector by pressing the blue  power button on the remote control.
- 2 Connect an HDMI or VGA cable from the projector to your computer.



Note: You can also display media through a USB connection with the USB Display feature. See the online *BrightLink User's Guide* for more information.

- 3 Connect the USB cable from the projector's USB **TypeB** port directly to any available USB port on your computer.



- 4 The default language of the menu system is English. To select another language, press the **Menu** button on the remote control. Select **Extended** and press . Select **Language** and press . Select your language and press . Press the **Menu** button to exit the menu system.
- 5 Display an image from your computer. If the image doesn't appear, try one of the following:
 - On some Windows® laptops, you may need to hold down the **Fn** key on the keyboard and press **F7** or the function key that lets you display on an external monitor. It may have an icon such as , or it may be labelled **CRT/LCD**.
 - On Windows 7 or later, hold down the Windows key and press **P** at the same time, then click **Duplicate**.
 - On a Mac, you may need to open **System Preferences** and select **Displays**. Click the **Arrangement** tab and select the **Mirror Displays** checkbox.

- Try pressing the **Source Search** button on the remote control.
- Press the **Home** button on the remote control to verify the source input and settings.


You may already have interactive software on your computer, or you may need to install it. If you are using a Mac, you need Easy Interactive Driver and Easy Interactive Tools (or other interactive software). For Windows, you only need Easy Interactive Tools (or other interactive software).

Here's how to find out if the Easy Interactive Tools software is installed on your computer:

Mac: Look for the Easy Interactive Driver and Easy Interactive Tools folders in the Application folder on your hard drive. If you see these folders, the Easy Interactive software is installed.

Windows 10: Select  > **EPSON Projector** > **Easy Interactive Tools Ver. 4.2**.

Windows 8.x: Navigate to the **Apps** screen and select **Easy Interactive Tools Ver. 4.2**.

All other Windows versions: Select  or **Start** > **All Programs** or **Programs** > **EPSON Projector** > **Easy Interactive Tools Ver. 4.2**.

If you see Easy Interactive Tools, the software is installed.

If the software is not installed, download it from:

www.epson.com/brightlinkdownloads (U.S.)

www.epson.ca/brightlinkdownloads (Canada)

www.epson.com.jm/support (Caribbean)

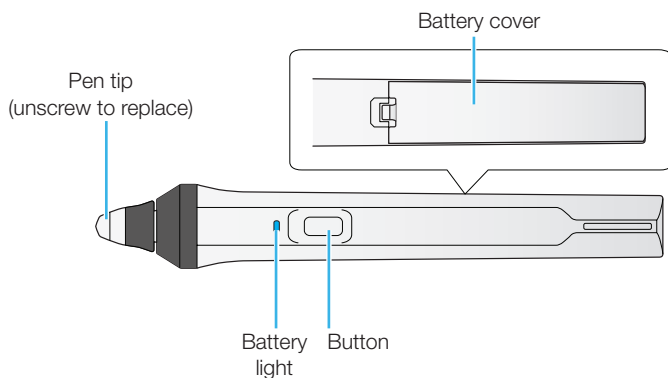
For more information about Easy Interactive Tools, see the online Easy Interactive Tools tip sheet or the online *BrightLink User's Guide*.

2 Interacting With the Screen

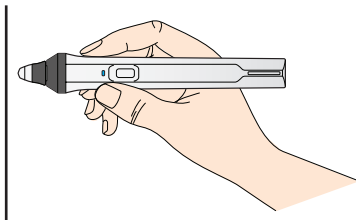
Interactive Pens

Your projector came with 2 pens, one orange (Interactive Pen A) and one blue (Interactive Pen B).

The pens have two different types of tips available: a soft, felt tip and a hard tip. Make sure one AA battery is installed in each pen.



- To turn on the pen, pick it up. The blue light comes on briefly. If the battery is low, the light flashes.
- Hold the pen perpendicular to the board, as shown below.



- When you are finished using the pen, simply place it in an area away from the projection screen.

Note: The pens turn off automatically after about 15 seconds of inactivity. Pick the pen up to turn it back on.

Finger Touch

You can use your finger to perform the same functions as the interactive pen when the Touch Unit is installed. You can use either the pen or your finger, or use both at the same time.

When performing finger touch operations, you can use two fingers in annotation and whiteboard modes, or up to six fingers in computer interactive mode.

Using Your Pen or Finger as a Mouse

When you are in computer interactive mode, you can use the pen or your finger as a mouse to interact with your computer desktop.

Mouse function	Pen/finger action
Left-click	Tap on board
Double-click	Tap twice
Right-click	Press pen button Tap and hold finger for 3 seconds
Move cursor	Hover over board
Click and drag	Tap and hold on item, then drag

If your device supports these functions, you can also do the following:

- To zoom in or out, touch an item using two fingers and either move your fingers away from each other (zoom in) or toward each other (zoom out).
- To rotate an image, touch the image with two fingers and then rotate your hand.
- To scroll up or down on a page, or move backward or forward in a browser window, use swiping gestures or flicks.

See the online BrightLink *User's Guide* for more information.

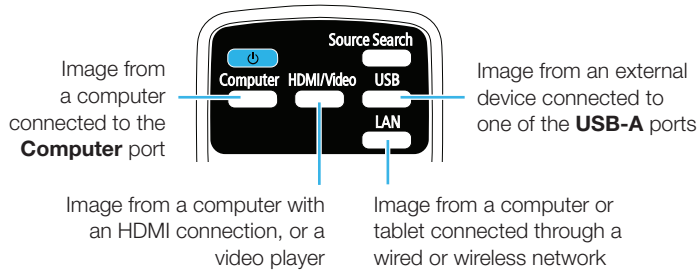
Having Trouble?



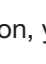
If the cursor does not match your pen or finger location, follow the calibration instructions on the back of this card.


3 Using the Built-in Toolbar


The projector's built-in toolbar lets you annotate images from other devices that have been connected to the projector, such as a document camera, tablet, or other source. This is known as PC Free Annotation mode.

- 1 Press one of the source buttons on the remote control to select the source for the image you want to annotate.



- 2 To activate the toolbar, tap the board with the pen or your finger. If you don't see the  icon, tap the  icon and then tap the  icon.

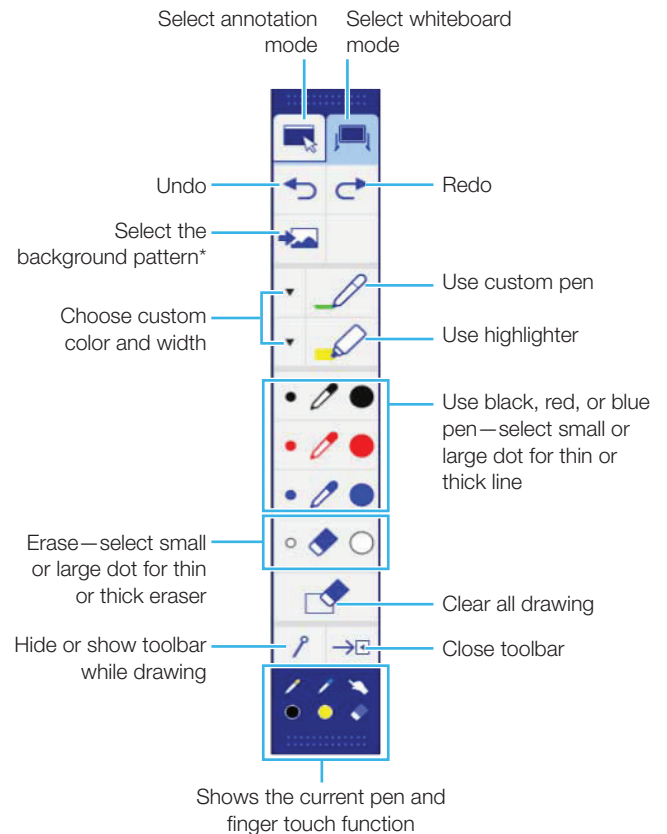
Note: If you only see the  icon, you are already in PC Free Annotation mode.


- 3 To close the toolbar, tap the  icon at the bottom of the toolbar.

Two different toolbars are available in PC Free Annotation mode, one for annotation mode and one for whiteboard mode.

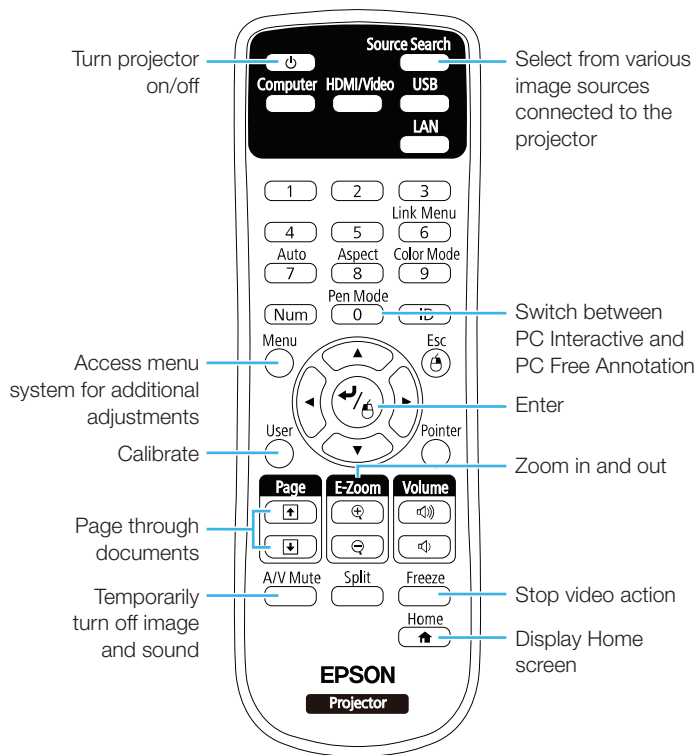
Many of the tools are the same as Easy Interactive Tools, but fewer functions are available.

- Annotation mode displays the built-in toolbar on whatever image is being projected.
- Whiteboard mode lets you project a white or black screen or background pattern, and use the pen or your finger to write or draw as you would on a chalkboard or dry erase board.



* In annotation mode, the  select background tool does not appear.

Using the Remote Control



For more information on using the remote control:

- See the online BrightLink *User's Guide*.
- Watch a video or two at www.epson.com/brightlinkvideos (U.S.) or www.epson.ca/brightlinkvideos (Canada).

Choosing the Right Tool

If you already have annotation software, you can use it with your BrightLink projector. If you are using Microsoft® Office 2003 or later, you can also use the “inking tools” to add handwritten notes to your documents and PowerPoint® presentations.

Here are some tips on choosing from the tools that came with your BrightLink projector:

	Built-in Toolbar	Easy Interactive Tools
No computer?	✓	
Use pen or finger as a mouse	✓	✓
Use the board to draw on computer content	✓	✓
Draw on board using the computer		✓
Use two pens and up to two fingers simultaneously	✓	
Use up to two pens and six fingers simultaneously*		✓
Save annotations as a JPEG	✓	
Save annotations in image, PDF, or editable format		✓





* Depending on connection type. See the online BrightLink *User's Guide* for more information.

Calibration

Calibration coordinates the position of the pen or your finger with the location of your cursor. If the pen or finger position and cursor location don't match, you can perform auto calibration, or you can calibrate manually for even greater accuracy.

Note: You must perform pen calibration before calibrating finger touch.




Pen Calibration

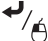
- 1 To start pen calibration, press the **User** button on the remote control, or press the **Home** button and select **Auto Calibration**.
- 2 When you see the Auto Calibration screen, do one of the following:
 - Press  to run auto calibration, then wait until calibration is complete.
 - Select **No**, then press  and follow the steps below to calibrate manually.
- 3 Select **Manual Calibration**, then press .
- 4 When you see the Manual Calibration screen, press  to select **Yes**.
- 5 Touch the center of the circles on the screen with your pen to perform manual calibration.

Note: Make sure you touch the center of each circle; otherwise the calibration may not be accurate.

Finger Touch Calibration

Note: If you are unable to perform finger touch calibration, make sure that the installer properly installed the Touch Unit and performed the angle adjustment.

- 1 To start finger touch calibration, press the **User** button on the remote control, or press the **Home** button and select **Auto Calibration**.
- 2 When you see the Auto Calibration screen, select **No**, then press  and follow the steps below.
- 3 Select **Touch Unit Setup**, then press .
- 4 Select **Touch Calibration**, then press .

- 5 When you see the Touch Calibration screen, press  to select **Yes**.

A green circle appears in the upper left corner of your projected image.

- 6 Touch and hold the center of the circle with your finger until the circle disappears and another one appears.

Note: Make sure you touch the center of each circle; otherwise the calibration may not be accurate.

- 7 Continue until all of the circles disappear.

For more detailed instructions, see the online BrightLink *User's Guide*.

Need Help?

Telephone Support

The Epson® PrivateLine® service is for you!

All you have to do is call (800) 637-7661. This service is available for the duration of your warranty period.

You may also speak with a projector support specialist by dialing (562) 276-4394 (U.S.) or (905) 709-3839 (Canada).

Support hours are 6 AM to 8 PM, Pacific Time, Monday through Friday, and 7 AM to 4 PM, Pacific Time, Saturday. Days and hours of support are subject to change without notice. Toll or long distance charges may apply.

Online Support

To access the online *User's Guide*, get FAQs, and more, visit www.epson.com/brightlinkdownloads (U.S.) or www.epson.ca/brightlinkdownloads (Canada) and select your product.

EPSON is a registered trademark and EPSON Exceed Your Vision is a registered logomark of Seiko Epson Corporation. BrightLink and PrivateLine are registered trademarks of Epson America, Inc.

Mac is a trademark of Apple Inc., registered in the U.S. and other countries.

General Notice: Other product names used herein are for identification purposes only and may be trademarks of their respective owners. Epson disclaims any and all rights in those marks.

This information is subject to change without notice.

© 2017 Epson America, Inc., 8/17

CPD-54265



413508300

EPSON
EXCEED YOUR VISION

Free Manuals Download Website

<http://myh66.com>

<http://usermanuals.us>

<http://www.somanuals.com>

<http://www.4manuals.cc>

<http://www.manual-lib.com>

<http://www.404manual.com>

<http://www.luxmanual.com>

<http://aubethermostatmanual.com>

Golf course search by state

<http://golfingnear.com>

Email search by domain

<http://emailbydomain.com>

Auto manuals search

<http://auto.somanuals.com>

TV manuals search

<http://tv.somanuals.com>