

Get Started with BrightLink Pro

BrightLink Pro is a meeting room and classroom productivity tool that allows you to create a digital whiteboard wherever you need it. Add new blank screens and keep writing instead of erasing your ideas. Insert images, project your content from smartphones, tablets, or laptops, and add annotations. Save your notes and ideas, and share them via email without a computer.

Note: Finger touch is only available on the BrightLink Pro 1430Wi.

What would you like to do?

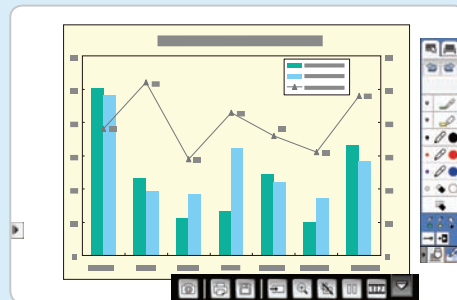
Start writing

Draw on the projected screen with the interactive pen or your finger.



Project from any source

Import content from a connected device directly to your whiteboard.



Bring your own device

Connect your mobile device and display your content on the screen.



Interact with your computer

View your desktop and use the interactive pen as a mouse.



Note: Some features of BrightLink Pro require prior configuration by the installer or network administrator.



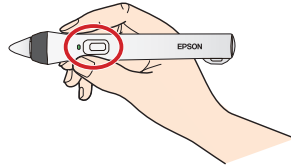
Visit epson.com/blpro to watch tutorial videos.

Start writing

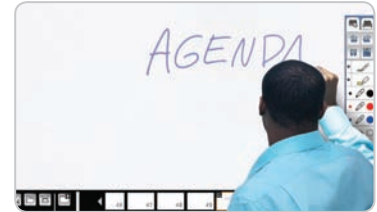
1 Turn on the projector.



2 Turn on the interactive pen.



3 Start writing!



Running out of room? Add a page!

You can add up to 50 new pages to your whiteboard. Tap the thumbnails at the bottom of the screen to switch between pages.



Add interest by changing colors

Tap a pen color to select the active color. Tap the down arrow next to a pen to choose a custom color. Tap the smaller or larger circle to choose a thin or thick line.



Wipe away mistakes with the eraser

Tap the Eraser icon or press the button on the pen to enter eraser mode.



Duplicate the page

Tap the duplicate page icon to create a duplicate of the current page as a new page.



Not sure what that icon does?

Tap the Help icon to display an on-screen guide to the whiteboard icons.

Open content from a USB or network drive

- 1 Insert a USB flash drive in the control pad (or use a networked drive).
- 2 Tap the Insert Image icon to select and display a JPG, PNG, EWF, or PDF page.

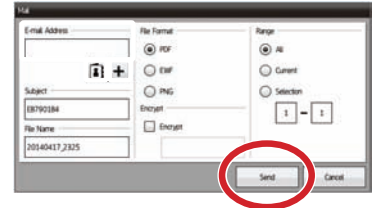
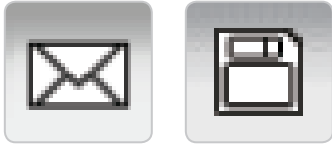


- 3 Use the interactive pen or your finger to add notes.



Save your notes or share them via email

- 1 Tap the Mail or Save icon on the bottom toolbar.
- 2 Select the necessary settings.
- 3 Tap **Save** to save your notes or **Send** to send the email.



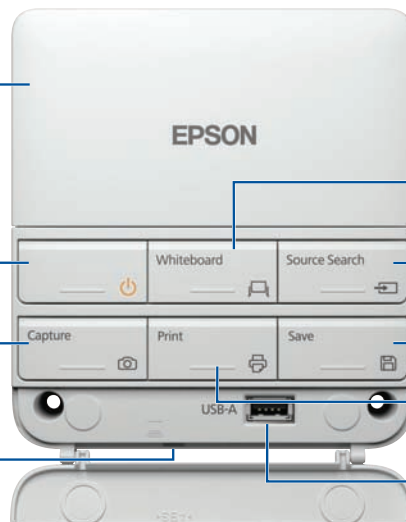
Control Pad functions

Remove the top cover to install batteries or connect the Control Pad to the projector or to a printer. See the online *User's Guide* for more information.

Turn projector on/off

Capture the projected image (switch to whiteboard mode to paste the captured image)

Connect USB cable to computer (on bottom of Control Pad)



Select whiteboard mode (and turns on the projector if it is off)

Select from various image sources connected to the projector

Save the projected image

Print the projected image

Connect USB flash drive

Bring your own device

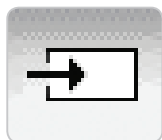
- 1** Connect to BrightLink Pro using your Android™ or iOS device's wireless settings.



- 2** Launch the Epson iProjection™ app on your device, select the projector, and display your content.



- 3** Tap the Source Select icon to switch to the device's source.



- 4** Start projecting and annotating your content!



Download the Epson iProjection App

Scan the QR codes below or search for “Epson iProjection” on Google Play or the App Store to download the iProjection app.



With iProjection, you can:

- Display documents, images and even browse web pages
- Annotate directly from your device or BrightLink Pro
- Capture your notes and then save, print or share via email



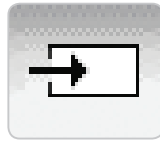
Visit epson.com/iprojection for more information.

Project from any source

- 1** Project an image from your connected device. (To connect, see “Bring your own device.”)



- 2** Tap the Source Select icon to select the active source.



- 3** Use the interactive pen or your finger to add notes.



Take a snapshot

Tap the camera icon (or press **Capture** on the Control Pad) to save your image and notes as a new screen on the digital whiteboard.



Print your notes

Tap the Print icon (or press **Print** on the Control Pad) to print the displayed screen on a connected printer (if available).



Save your notes

Tap the Save icon (or press **Save** on the Control Pad) to save the image and notes as a single file.



Split the screen

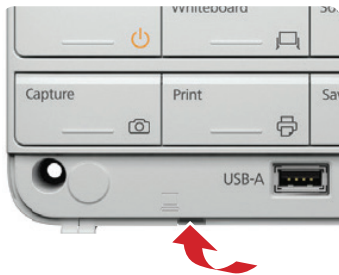
Tap the Split Screen icon to project two different sources side-by-side — even a video conference.



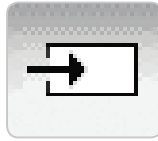
Visit [epson.com/support](https://www.epson.com/support) for manuals, support information, and more!

Interact with your computer

1 Connect your computer.



2 Tap the Source Select icon to select the computer's source.



3 Use the interactive pen or finger as a mouse — launch programs, browse the web, the sky's the limit!



Launch programs

You can use the pen to launch any program on your computer and navigate your file system, right on the screen.

Browse the web

Browse the web in any browser; view web pages, download files, and view videos.

Play videos

Play videos on your computer and display them on the screen.

Use the pen/finger as a mouse

Mouse command	Pen action
Click	Tap
Double-click	Double tap
Click and drag	Tap and drag
Move cursor	Hover over board
Right-click	Click pen button Tap and hold finger for 3 seconds

Need help?

The Epson® PrivateLine® service is for you!

All you have to do is call (800) 637-7661. This service is available for the duration of your warranty period.

You may also speak with a projector support specialist by dialing (562) 276-4394 (U.S) or (905) 709-3839 (Canada).

Support hours are 6 AM to 8 PM, Pacific Time, Monday through Friday and 7 AM to 4 PM, Pacific Time, Saturday. Days and hours of support are subject to change without notice. Toll or long distance charges may apply.

EPSON is a registered trademark, Epson iProjection is a trademark, and EPSON Exceed Your Vision is a registered logomark of Seiko Epson Corporation. BrightLink and PrivateLine are registered trademarks of Epson America, Inc.

Apple and the Apple logo are trademarks of Apple Inc., registered in the U.S. and other countries. App Store is a service mark of Apple Inc.

General Notice: Other product names used herein are for identification purposes only and may be trademarks of their respective owners. Epson disclaims any and all rights in those marks.

This information is subject to change without notice.

© 2014 Epson America, Inc., 4/14
Printed in XXXXXX

CPD-41020



412716200

Free Manuals Download Website

<http://myh66.com>

<http://usermanuals.us>

<http://www.somanuals.com>

<http://www.4manuals.cc>

<http://www.manual-lib.com>

<http://www.404manual.com>

<http://www.luxmanual.com>

<http://aubethermostatmanual.com>

Golf course search by state

<http://golfingnear.com>

Email search by domain

<http://emailbydomain.com>

Auto manuals search

<http://auto.somanuals.com>

TV manuals search

<http://tv.somanuals.com>