



USER GUIDE

LITESHOW4

Declaration of Conformity

Manufacturer: InFocus Corporation, 13190 SW 68th Parkway, Suite 200, Tigard, OR 97223-8368

We declare under our sole responsibility that the LiteShow wireless adapter conforms to the following directives and norms:



European Union: CE Standard

EN 300 328 / EN 62311 / EN 55022 CLASS B / EN 55024 / EN 301 489-17 / EN 301 489-1 / EN 61000-3-2 / EN 61000-3-3 / EN 61000-4-2 / EN 61000-4-3 / EN 61000-4-4 / EN 61000-4-5 / EN 61000-4-6 / EN 61000-4-8 / EN 61000-4-11 / EN 60950-1 / ICE 60950-1



FCC ID : RYK-WMIR269GN

U.S.A : FCC Standard

FCC 47 CFR Part 15 Subpart C / ANSI C63.4-2003 / FCC 47 CFR Part 15 Subpart B Class B / ANSI C63.4-2003 / ICES-003

IC : 8150A-WMIR269GN

Canada : IC Standard

IC RSS-210 / ICES-003 Issue 4



Australia : C-Tick Standard

AS/NZS 4268 / CISPR 22 Class B / IEC 60950-1



COFETEL ID: RCPINAA10-0931

Mexico : NOM & COFETEL Standard

NOM-001-SCFI-1993 / NOM-121-SCT1-2008

The Agency/Regulatory Approval for the computer's wireless adapter is solely the responsibility of the adapter manufacturer - not InFocus Corporation.

Trademarks

InFocus, In Focus, INFOCUS (stylized), LiteShow and associated INFOCUS logos and designs, are either trademarks or registered trademarks of InFocus Corporation in the United States and other countries. Apple and Macintosh are trademarks or registered trademarks of Apple Computer, Inc. Microsoft and Windows are trademarks or registered trademarks of Microsoft Corporation. Other trademarks mentioned herein are the property of their respective owners and are referenced for information only. Any reference does not imply affiliation, recommendation or endorsement by or between the respective trademark owners and InFocus Corporation.



NOTE: This product is covered electrical and electronic equipment under the European Union's Waste from Electrical and Electronic Equipment ("WEEE") Directive (2002/96/EC). The WEEE Directive requires that covered equipment be collected and managed separately from typical household waste in all EU member states. Please follow the guidance of your local environmental authority or ask the shop where you purchased the product for collection or recycling options.

FCC Warning

Note: This equipment has been tested and found to comply with the limits for a Class B digital device, pursuant to part 15 of the FCC Rules. These limits are designed to provide reasonable protection against harmful interference in a residential installation. This equipment generates, uses and can radiate radio frequency energy and, if not installed and used in accordance with the instructions, may cause harmful interference to radio communications. However, there is no guarantee that interference will not occur in a particular installation. If this equipment does cause harmful interference to radio or television reception, which can be determined by turning the equipment off and on, the user is encouraged to try to correct the interference by one or more of the following measures:

- Reorient or relocate the receiving antenna.
- Increase the separation between the equipment and receiver.
- Connect the equipment into an outlet on a circuit different from that to which the receiver is connected.
- Consult the dealer or an experienced radio/TV technician for help.

CAUTION: The Part 15 radio device operates on a non-interference basis with other devices operating at its frequency. Any changes or modification to said product not expressly approved could void the user's authority to operate this device.

FCC CAUTION: Any changes or modifications not expressly approved by the party responsible for compliance could void the user's authority to operate this equipment. This device complies with Part 15 of the FCC Rules. Operation is subject to the following two conditions: (1) This device may not cause harmful interference, and (2) this device must accept any interference received, including interference that may cause undesired operation. The antenna(s) used for this transmitter must not be co-located or

operating in conjunction with any other antenna or transmitter.

IMPORTANT NOTE: FCC Radiation Exposure Statement:

This equipment complies with FCC radiation exposure limits set forth for an uncontrolled environment. This equipment should be installed and operated with a minimum distance of 2.5cm between the equipment and your body. Proper operation of this radio according to the instructions found in this user's guide will result in user exposure that is substantially below the FCC recommended limits.

- Do not touch or move antenna while the unit is transmitting or receiving.
- Do not hold any component containing the radio such that the antenna is very close or touching any exposed parts of the body, especially the face or eyes, while transmitting.
- Do not operate a portable transmitter near unshielded blasting caps or in an explosive environment unless it is a type especially qualified for such use.
- Do not operate the radio or attempt to transmit data unless the antenna is connected: if not, the radio may be damaged.

Canada

This Class B digital apparatus complies with Canadian ICES-003.

Cet appareil numérique de la classe B est conforme à la norme NMB-003 du Canada.

This device complies with Class B Limits of Industry Canada. Operation is subject to the following conditions:

- 1) This device may not cause harmful interference, and 2) This device must accept any interference received, including interference that may cause undesired operation. The device is certified to the requirements of RSS-139-1 and RSS-210 for 2.4-GHz spread spectrum devices. The use of this device in a system operating either partially or completely outdoors may require the user to obtain a license for the system according to the Canadian regulations. For further information, contact your local Industry Canada office.

Agency Approvals

FCC, CE, IC, C-Tick, NOM, COFETEL

Other specific Country Approvals may apply, see please product certification label.

InFocus reserves the right to alter product offerings and specifications at any time without notice.

Table of Contents

OVERVIEW	8
Features.....	8
What's in the Box	8
INITIAL SETUP	9
WINDOWS CLIENT UTILITY	11
Launch Application.....	11
Application Control Panel	12
Projection Mode Tab	12
Video Mode Tab.....	13
Menu Functions	14
Show Receiver Information	14
Web Admin.....	14
Search Receiver Device.....	14
Launch SidePad	15
Launch WebSlides	16
Select Projection Desktop	18
Projection Quality	19
Projection Mode	19
Resolution Setting.....	19
Projection Aspect Ratio	20
Enable IWB USB Bridge.....	20
Advanced Screen Capture.....	20
Send Audio to Display	21
Auto Power Management.....	21
Auto WiFi Connect.....	21
Make USB PnS token	22
Copy Application to Desktop	22
Hot Key.....	22
About.....	23
Exit	23
MAC CLIENT UTILITY	24
Launch Application.....	24
Application Control Panel	25

Projection Mode Tab	25
Video Mode Tab.....	26
Menu Functions	27
Show Receiver Information	27
Web Admin.....	27
Search Receiver Device.....	27
Launch SidePad	27
Enable WebSlides	29
Select Projection Desktop	30
Projection Quality	30
Projection Mode	30
Resolution Setting.....	31
Projection Aspect Ratio	31
Auto WiFi Connect.....	31
Send Audio to Display	32
Hot Key.....	32
About.....	32
Exit	32

WEB MANAGEMENT33

Home Page.....	33
Download	34
System Status.....	35
Conference Control.....	36
Admin	37
Device Setup.....	37
Network Setup.....	38
IP Setup	39
DHCP Server Setup	39
Wireless Setup.....	39
AP Setup.....	40
Gatekeeper	40
SNMP	40
OSD Setup.....	41
Change Passwords.....	42
Reset to Default	43
Firmware Upgrade.....	44
WebSlides Setup.....	45
Reboot.....	46
Logout	46

Start WebSlides	47
APPENDIX A: USING PTG CONVERTER.....	48
APPENDIX B: LITESHOW PORT MAP.....	49
APPENDIX C: CONFIGURING LITESHOW FOR SPECIFIC ENVIRONMENTS.....	50

Overview

With the revolutionary Plug-and-Show wireless projection, QuadView, and wireless projection via PDA, LiteShow makes all of your presentations and meetings more efficient and successful.

Features

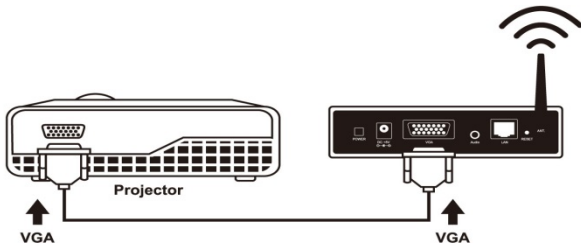
- Compatible with Windows 8, Windows 7, Vista, XP, and Macintosh (Mac) version 10.5 and above
- Plug and Show! Just link your computer to LiteShow (through WLAN or Ethernet); plug the token into a USB port, and in seconds, your screen will be projected wirelessly to your projector!
- QuadView allows up to four computer or PDA screens to be projected on one projector at the same time.
- Web-based conference control
- Session security login, wireless WEP/WPA key and gatekeeper functions protect presentation contents and maintain office network security.
- Media playback feature supports music and video streaming. LiteShow can even handle high-definition video.

What's in the Box

- LiteShow 4 module
- LiteShow USB token
- Power Adapter (DC +5V, 2.5A)
- Antenna (2)
- Mounting Hardware
- Quick Installation Guide with Warranty Card
- Quick Installation Guide for mobile applications

Initial Setup

- 1) Connect power to LiteShow module, and connect a VGA cable from the projector to the LiteShow VGA connector. If desired, audio can also be connected to the LiteShow Audio connector.



- 2) Turn on the projector and LiteShow module. Note: When the projector shows the instructions below, LiteShow is ready for use.



- 3) Verify that your computer's wireless connection is enabled and connect to the LiteShow wireless network.
- 4) Open your browser. Although the LiteShow page should display automatically, you can bring up the LiteShow page by entering the IP address displayed on the projector into your web browser. Note: The default IP address of LiteShow is 192.168.100.10.
- 5) At the LiteShow login screen, enter one of the following combinations to access the downloadable client software:

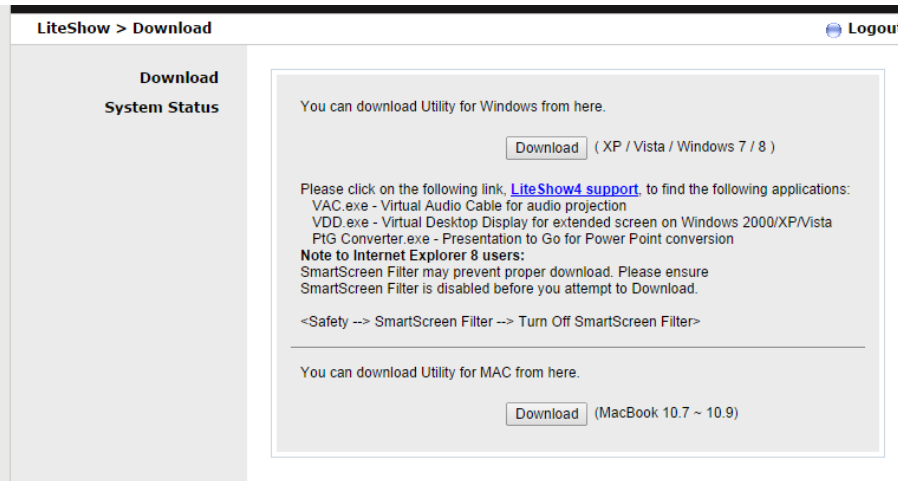
Login	Default Password
None	<i>Not applicable – No password required</i>
Basic User	basic
Admin User	admin

Note: If the default password listed above does not work, contact your IT administrator.

6) Select the client software that corresponds to your operating system and click **Download** to start the installation program.

7) Follow the Installation Wizard instructions.

Note: If a **Windows Security Alert** window displays, click **Unblock** to continue installation.



8) Once installation is complete, a LiteShow shortcut will appear on your Desktop.

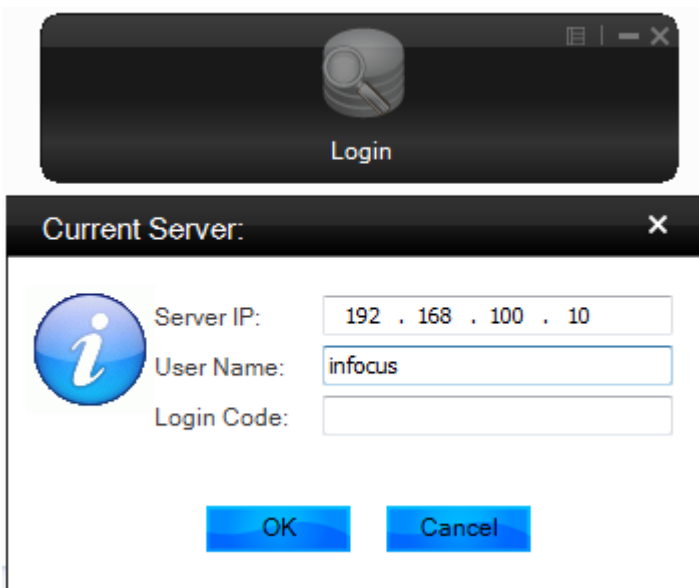
Windows Client Utility

Launch Application

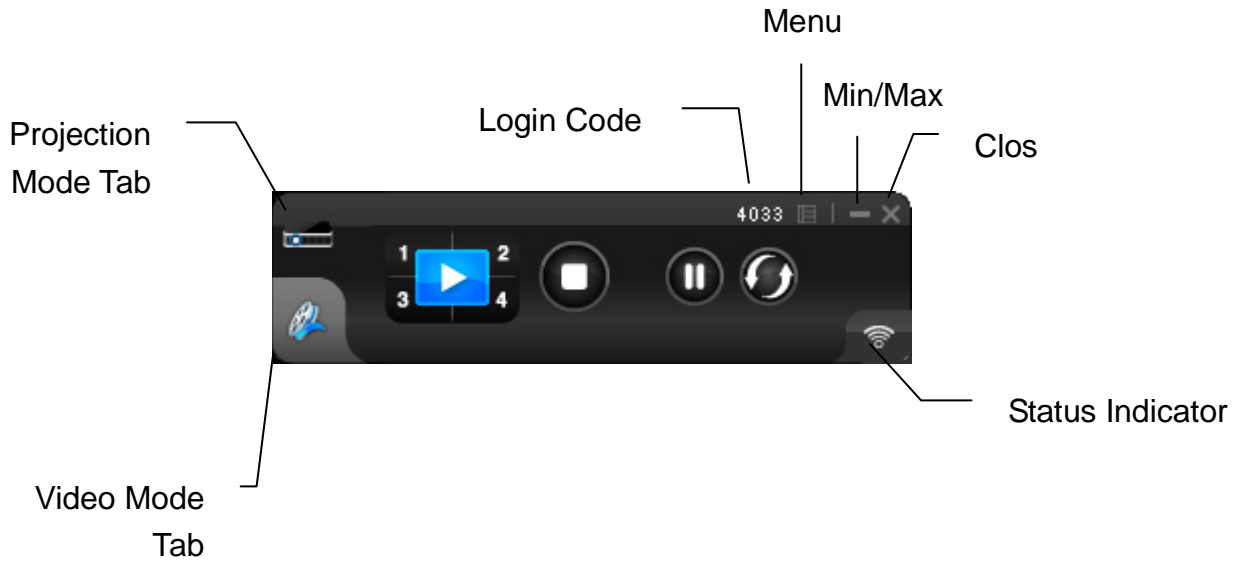
After you successfully download the LiteShow Windows client, follow the steps below to start the program.



- 1) Click the **LiteShow** shortcut.
- 2) Select the network you want to project over, and then the LiteShow module you wish to use.
- 3) If the LiteShow module is found, a Login Code dialog box displays on your projector.
- 4) Enter the **Login Code** visible on the projector and click **OK**. Your computer screen should begin displaying automatically.
- 5) If the **Login Code** is not visible on the projector, the Login Code has been disabled by your administrator. Click **OK** to proceed.



Application Control Panel



Projection Mode Tab






Projection Mode Controls	
	Full Screen projection
	Project to Quadrant #1
	Project to Quadrant #2
	Project to Quadrant #3
	Project to Quadrant #4
	Stop projecting
	Pause projecting
	Refresh projection

Projection Audio Notes:

LiteShow can redirect your computer's audio to the projector using an optional VAC driver. To enable audio projection, you must first install the VAC Setup application (located on the USB token). Once VAC is installed, open the LiteShow application menu, select **Send Audio to Display**, select **Yes**, and restart LiteShow.

Video Mode Tab



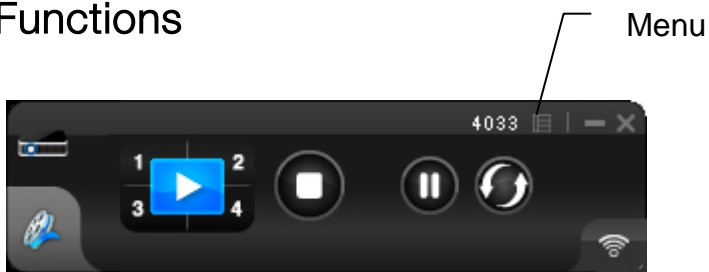
Video Mode Controls	
	Start playing video/music
	Stop playing video/music
	Open video/music file
	Mute
	Volume level
	Progress bar

Video Mode Notes:

Supported formats include: MPEG1/2, DivX(3.4.5), XviD(MPEG4), H.264, WMV9, MP3, WMA.

For higher quality video or music playback, stream the files from your computer to the LiteShow module. Decompression, buffering, and video processing all take place in the LiteShow module reducing the load on your computer and network. Click the **Video Mode** tab to switch to video mode. Choose a video/audio file to begin playback on the screen.

Menu Functions



When you click the **Menu** button shown above, the menu window displayed on the right appears. Click an option to enable/disable a feature or open another submenu.

Show Receiver Information

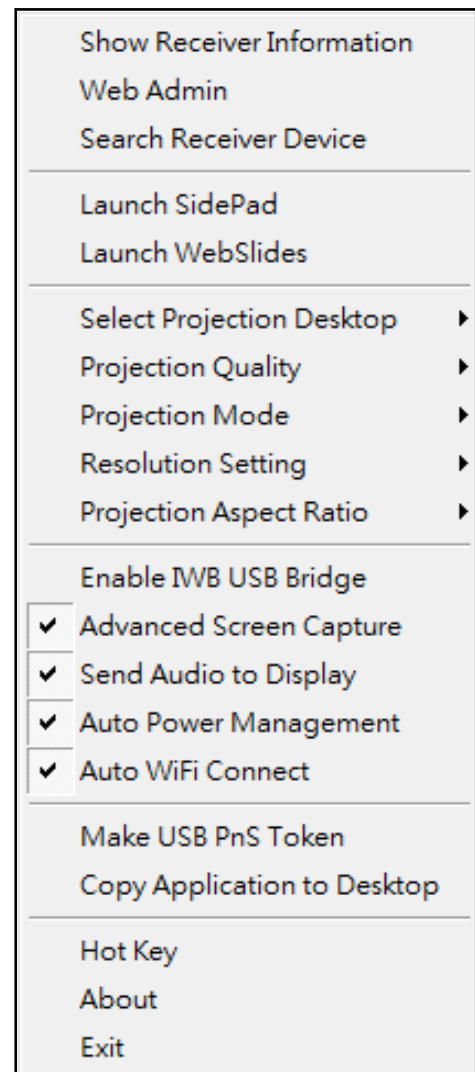
Displays the receiver information, such as the WiFi name, IP address, and code, in the upper-left corner of the desktop for ten seconds.

Web Admin...

Opens the Web Management login page. See the [Web Management](#) section for more information.

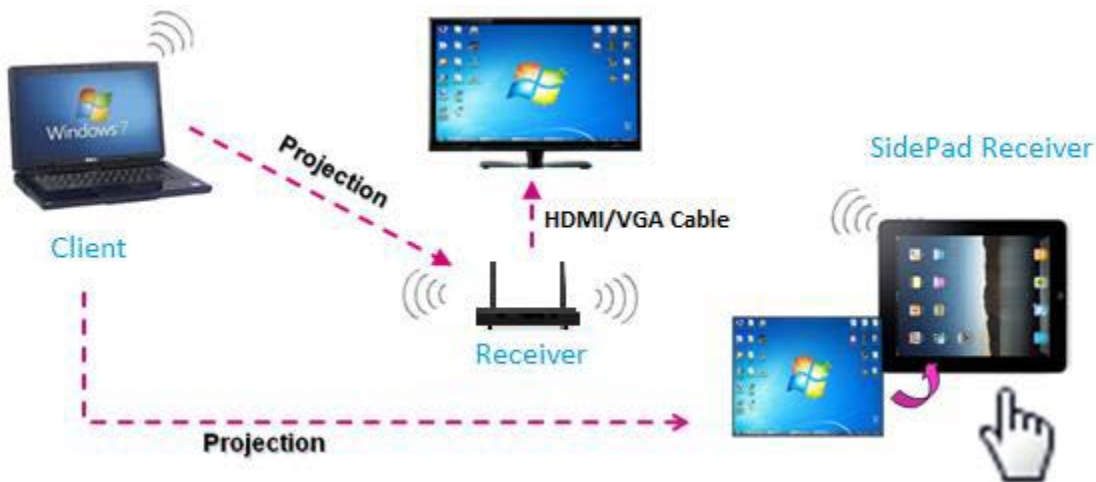
Search Receiver Device

Disconnects the current receiver and searches for the receiver again.



Launch SidePad

SidePad is an application that allows users to connect iPads/Smartphones (Android and iOS), PCs, and displays/projectors via the LiteShow 4 device. The user can then control the projecting PC via the iPad/Smartphone. See the illustration below.



- 1) Download the software application:
For iOS: Download **SidePad Receiver** from the Apple Store.
For Android: Download **SidePad Receiver** from the Google Play Store.
- 2) Connect your iOS/Android device to the LiteShow 4 device through WiFi and launch **SidePad Receiver**.



- 3) Click **Launch SidePad** from the menu. In a few seconds, the PC desktop will display on the iOS/Android device. You can now control the PC from your iOS/Android device.



- 4) If no iPad/Smartphone is detected, the SidePad login screen displays.

SidePad: Login

Device IP:

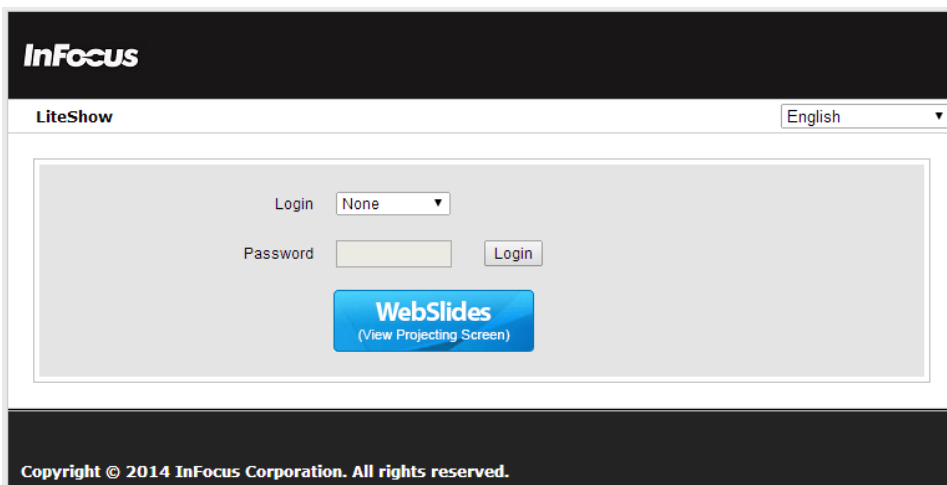
User Name:

Launch WebSlides

WebSlides allows users to broadcast their presentation to up to 64 users simultaneously.

Note: WebSlides is not available when QuadView is in use.

- 1) **Presenter:** Make sure your PC/Mac is connected to LiteShow4 and click **Launch WebSlides**.
- 2) **Audience:**
 - a. Connect to the LiteShow4 WiFi Network shown on the projector.
 - b. Launch your web browser and enter the LiteShow4 IP address.



-
-
- c. Click the **WebSlides** button.

3) The presenter's slides display.



4) Use the toolbar to pause, save, change the aspect ratio, expand, and refresh the presentation window.

Notes:

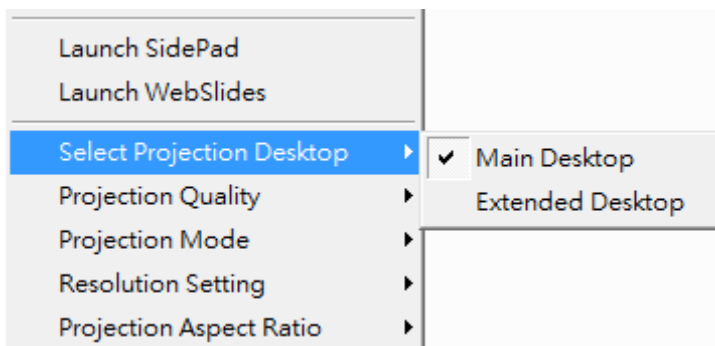
- WebSlides users and users logged into LiteShow4 both consume wireless bandwidth. If more than 10 users are logged into LiteShow4, we recommend connecting LiteShow4 to the company network using Ethernet or a router to ensure best performance.
- We also recommend that Webslides users do not exceed the recommended number specified on the Web Management page.
- Wireless Projection function and Conference Control function can support up to 64 users.

Select Projection Desktop

Allows you to project the main screen or the extended screen.

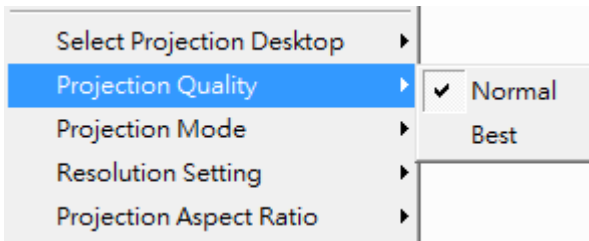
Notes:

- The VDD application (found on the USB token) must be installed on Windows XP computers before the Projection Desktop feature is used.
- Extended display is not supported on computers with Windows 7 and Vista Starter operating systems. In addition, extended display is not supported by all Windows 8 computers, however if the computer can extend its display to an external monitor/device, then it should work with LiteShow4.



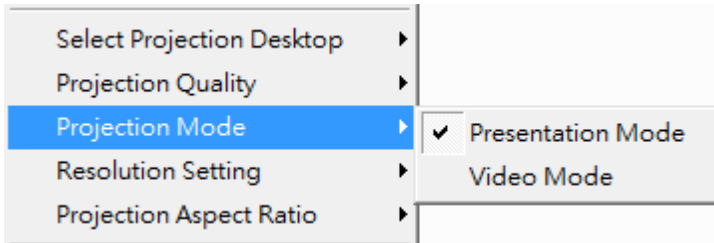
Projection Quality

Allows you to toggle between **Normal** (faster performance and lower image quality) and **Best** (better image quality and slower performance).



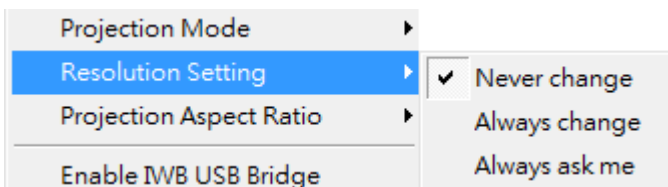
Projection Mode

Allows you to toggle between **Presentation** mode (shortest latency) and **Video** mode (better video performance).



Resolution Setting

Allows you to toggle between **Never Change** (keeps the original desktop resolution), **Always Change** (automatically changes the resolution to match the application's recommended settings), or **Always ask me** (prompts the user to change).



Projection Aspect Ratio

Allows you to toggle between **Keep aspect ratio** (keep the original aspect ratio if the desktop resolution is different than the LiteShow4 resolution), and **Fit full screen** (adjusts the image to project full screen).



Enable IWB USB Bridge

This feature enables touch functionality between your LiteShow device and your touch computer/ display.

- 1) Plug in a USB cable from the back port to your touch computer/display.
- 2) Click **Enable USB IWB Bridge**.
- 3) When the full screen projection is displayed, it will bridge the IWB device to your PC wirelessly.

Notes:

- The UoIP driver (found on the USB token) must be installed first before using this feature.
- The UoIP driver supports standard Win7/8 compatible HID touch devices.
- The front two USB ports do not support UoIP feature.

Advanced Screen Capture

Allows the user to see the layered windows on the connected display. Note: The mouse cursor may blink from time to time when the PC screen is displayed in this mode.

Advanced Screen Capture disabled:



Advanced Screen Capture enabled:



Send Audio to Display

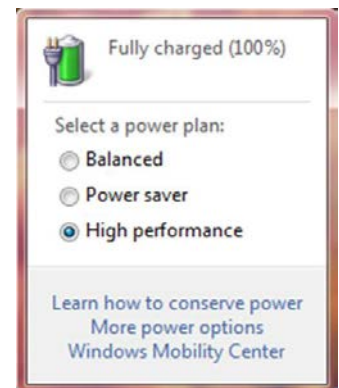
Bridges the audio to your display device, and mutes the local speaker. Audio is restored when the application closes.

Note: For Windows XP only: If you cannot hear the audio, the VAC Setup application (located on the USB token) must be installed on your computer.

Auto Power Management

To optimize projection performance, the LiteShow application will automatically turn the computer's Windows power management settings to **High performance** when the LiteShow Application is enabled.

Note: When the LiteShow application is disabled, the computer's power management settings are unchanged.



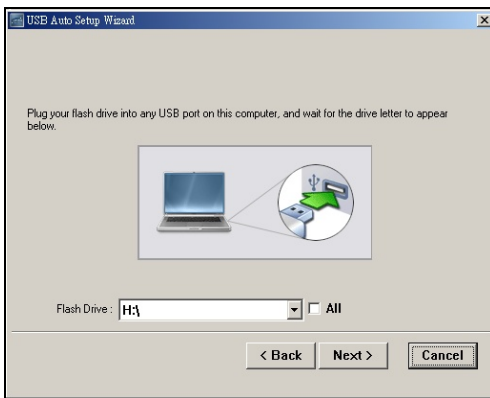
Auto WiFi Connect

When Auto WiFi Connect is enabled, the LiteShow application will search out and list all available wireless networks and automatically switch to the selected network before searching for available LiteShow modules. (Selecting **Skip** when Auto WiFi is selected, will not modify the computer's existing network connection.)

When Auto WiFi Connect is disabled, the LiteShow application will only search the computer's existing network connection for LiteShow modules.

Make USB PnS token

Creates a duplicate USB LiteShow token. You can insert a USB thumb drive and follow the Setup Wizard to make the token. Users can execute the LiteShow application directly from the token, avoiding the need for guests to install the application.

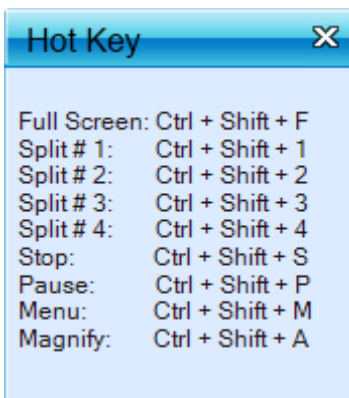


Copy Application to Desktop

Copies the LiteShow application to your desktop. Administrator rights on your computer are not required.

Hot Key

Displays a list of available Hot Keys.

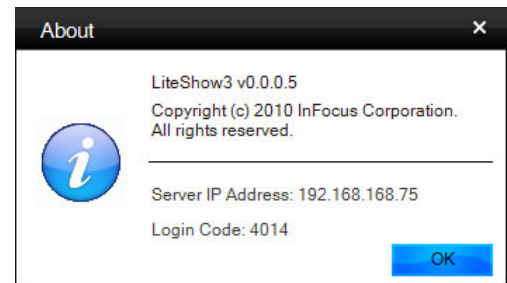


About

Displays system information, including the client version, IP address and login code.

Exit

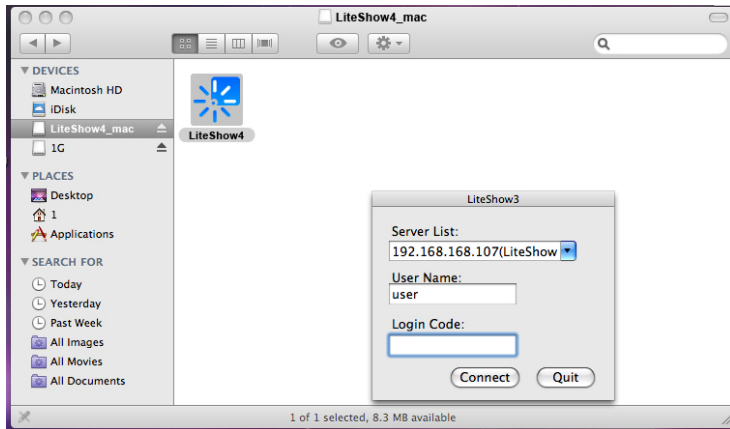
Closes and exits the LiteShow application. Projection stops immediately.



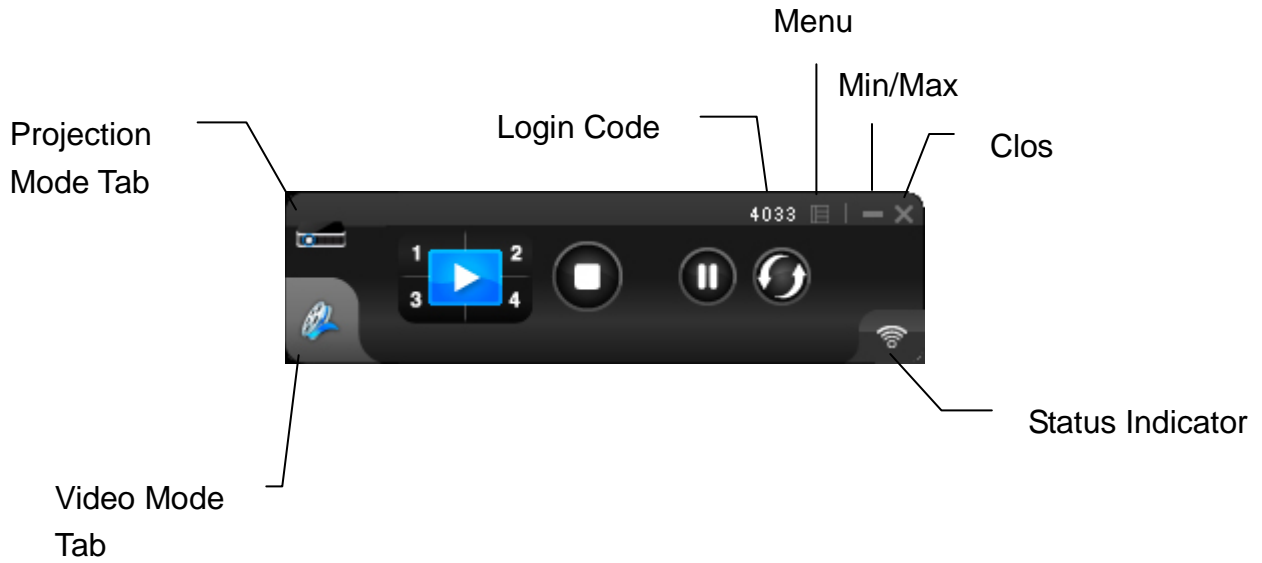
Mac Client Utility

Launch Application

- 1) Click the **LiteShow** shortcut.
- 2) Select the network you want to project over, and then the LiteShow module you wish to use.
- 3) If the LiteShow module is found, a Login Code dialog box is displayed on your projector.
- 4) Enter the **Login Code** visible on the projector and click **Connect**. LiteShow automatically begins displaying your computer screen to the connected projector.







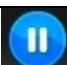



Application Control Panel



Projection Mode Tab



Projection Mode Controls	
	Full Screen projection
	Project to Quadrant #1
	Project to Quadrant #2
	Project to Quadrant #3
	Project to Quadrant #4
	Stop projecting
	Pause projecting
	Refresh projection

Video Mode Tab



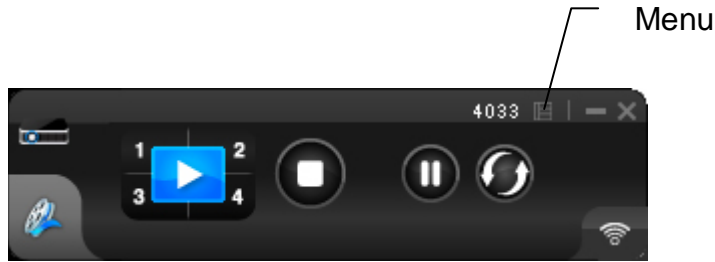
Video Mode Controls	
	Start playing video/music
	Stop playing video/music
	Open video/music file
	Mute
	Volume level
	Progress bar

Video Mode Notes:

Supported formats include: MPEG1/2, DivX(3.4.5), XviD(MPEG4), H.264, WMV9, MP3, WMA.

For higher quality video or music playback, stream the files from your computer to the LiteShow module. Decompression, buffering, and video processing all take place in the LiteShow module reducing the load on your computer and network. Click the **Video Mode** tab to switch to video mode. Choose a video/audio file to begin playback.

Menu Functions



When you click the Menu button shown above, this additional menu window will appear:

Show Receiver Information
Web Admin...
Search Receiver Device
Launch SidePad
Enable WebSlides
Select Projection Desktop ▶
Projection Quality ▶
Projection Mode ▶
Resolution Setting ▶
Projection Aspect Ratio ▶
✓ Auto WiFi Connect
✓ Send Audio to Display
Hot Key
About
Exit

Show Receiver Information

Displays the receiver information, such as the WiFi name, IP address, and code in the upper-left corner of the desktop for 30 seconds.

Web Admin...

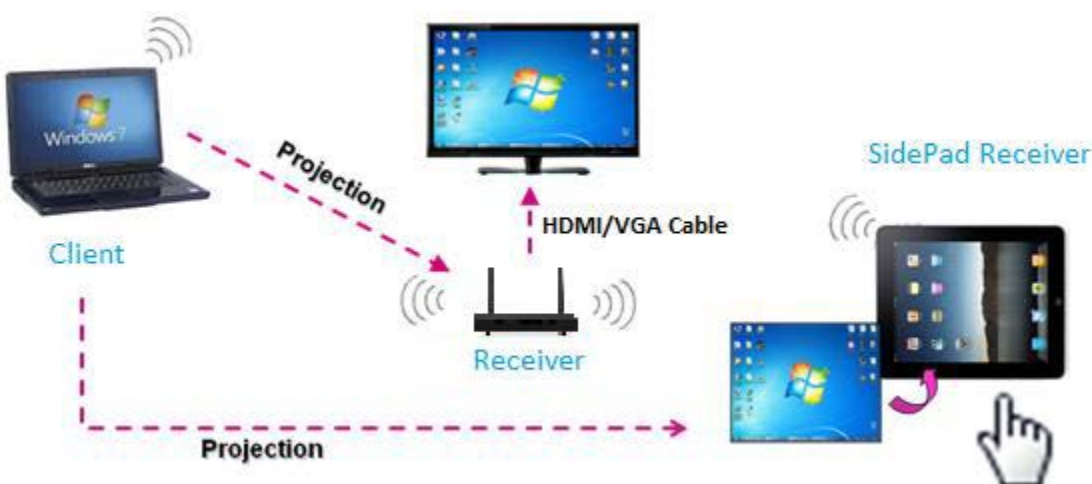
Opens the Web Management login page. See the [Web Management](#) section for more information.

Search Receiver Device

Disconnects the current receiver and searches for the receiver again.

Launch SidePad

SidePad is an application that allows users to connect iPads/Smartphones (Android and iOS), PCs, and displays/projectors via the LiteShow 4 device. The user can then control the projecting PC via the iPad/Smartphone. See the illustration below.



1) Download the software application:

For iOS: Download **SidePad Receiver** from the Apple Store.

For Android: Download **SidePad Receiver** from the Google Play Store.

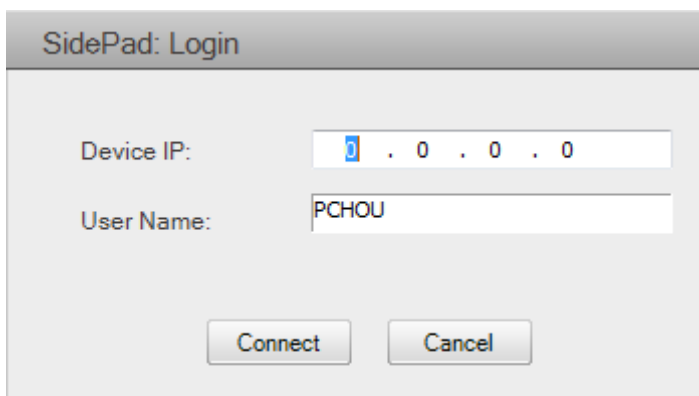
2) Connect your iOS/Android device to the LiteShow 4 device through WiFi and launch **SidePad Receiver**.



3) Click **Launch SidePad** from the menu. In a few seconds, the PC desktop will display on the iOS/Android device. You can now control the PC from your iOS/Android device.



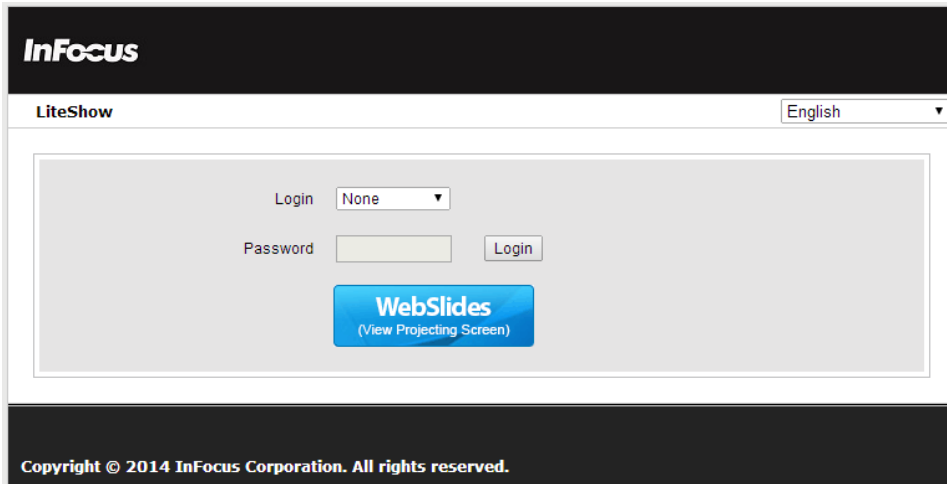
4) If your device is not detected, the **SidePad Login** window displays:



Enable WebSlides

WebSlides allows users to broadcast their presentation to up to 64 users simultaneously. Note: WebSlides is not available when QuadView is in use.

- 1) **Presenter:** Make sure your PC/Mac is connected to LiteShow4 and click **Launch WebSlides**.
- 2) **Audience:**
 - a. Connect to the LiteShow4 WiFi Network shown on the projector.
 - b. Launch your web browser and enter the LiteShow4 IP address.



- c. Click the **WebSlides** button.

- 3) Start to receive the presenter's slides. The below image can be seen on the audience's browser.



- 4) Use the toolbar to pause, save, change the aspect ratio, expand, and refresh the presentation window.

Notes:

- WebSlides users and users logged into LiteShow4 both consume wireless bandwidth. If more than 10 users are logged into LiteShow4, we recommend connecting LiteShow4 to the company network using Ethernet or a router to ensure best performance.
- We also recommend that Webslides users do not exceed the recommended number specified on the Web Management page.
- Wireless Projection function and Conference Control function can support up to 64 users.

Select Projection Desktop

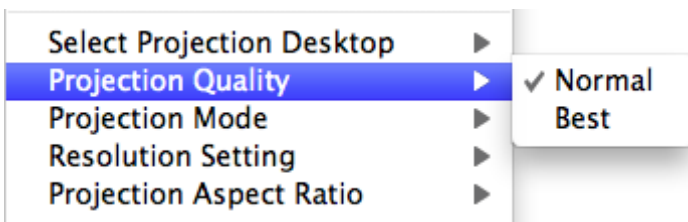
Allows you to project the main screen or the extended screen.

Notes:

- Only Mac 10.7 and above are supported.
- To use the extended screen, install the SVS extended screen driver from the USB token.

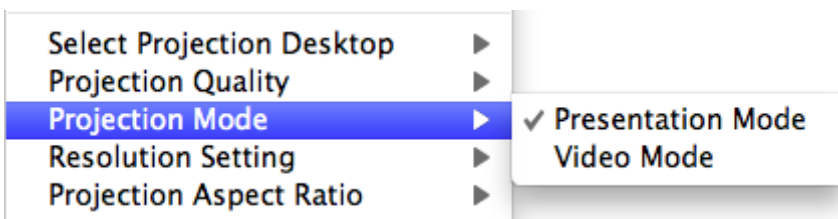
Projection Quality

Allows you to toggle between **Normal** (faster performance and lower image quality) and **Best** (better image quality and slower performance).



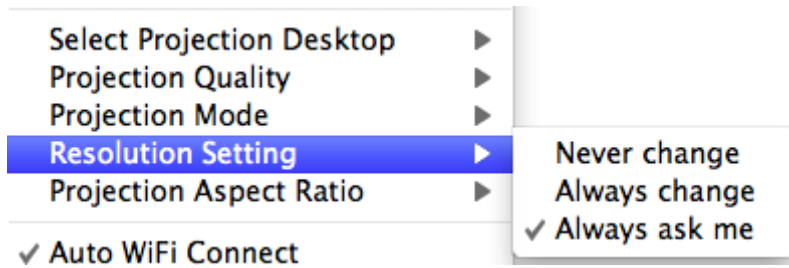
Projection Mode

Allows you to toggle between **Presentation** mode (shortest latency) and **Video** mode (better video performance).



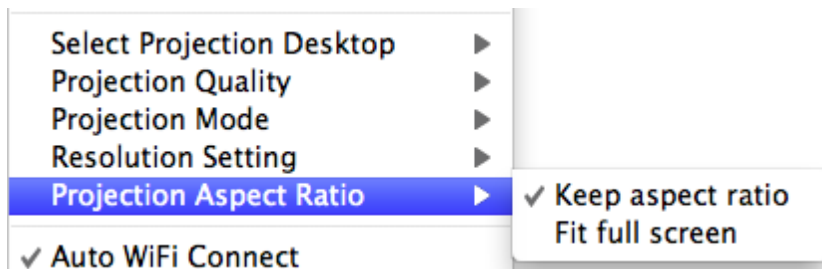
Resolution Setting

Allows you to toggle between **Never Change** (keeps the original desktop resolution), **Always Change** (automatically changes the resolution to match the application's recommended settings), or **Always ask me** (prompts the user to change).



Projection Aspect Ratio

Allows you to toggle between **Keep aspect ratio** (keep the original aspect ratio if the desktop resolution is different than the LiteShow4 resolution), and **Fit full screen** (adjusts the image to project full screen).



Auto WiFi Connect

When Auto WiFi Connect is enabled, the LiteShow application will search out and list all available wireless networks and automatically switch to the selected network before searching for available LiteShow modules. (Selecting **Skip** when Auto WiFi is selected, will not modify the computer's existing network connection.)

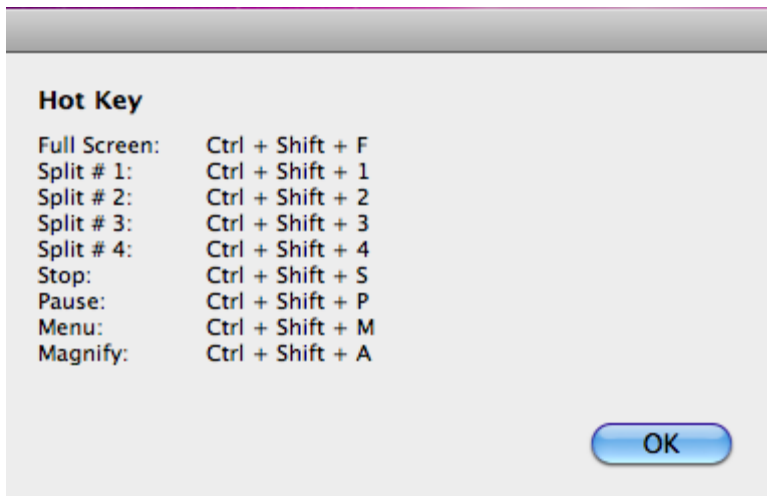
When Auto WiFi Connect is disabled, the LiteShow application will only search the computer's existing network connection for LiteShow modules.

Send Audio to Display

Bridges the audio to your display device, and mutes the local speaker. Audio is restored when the application closes.

Hot Key

Displays a list of available Hot Keys.



About

Displays system information, including the client version, IP address and login code.

Exit

Closes and exits the LiteShow application. Projection stops immediately.

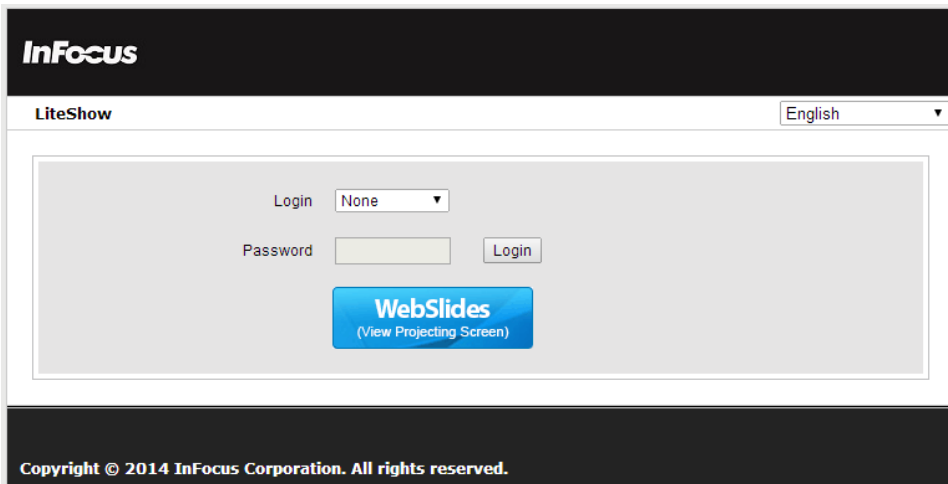
Web Management

Home Page

- 1) Ensure your computer has successfully connected to LiteShow.
- 2) Open your web browser. It should automatically open to the LiteShow home page. If not, enter the IP address shown on the projector screen in your browser window. The default IP is “192.168.100.10.”
- 3) At the LiteShow login screen, choose your desired language from the drop-down, and enter one of the following combinations to access associated LiteShow menus:

Login	Default Password	Menu Options
None	<i>Not applicable – No password required</i>	Download System Status
Basic User	basic	Download System Status Conference Control
Admin User	admin	Download System Status Conference Control Admin Menu

Note: If the default password listed above does not work, contact your IT administrator.



InFocus

LiteShow English

Login None

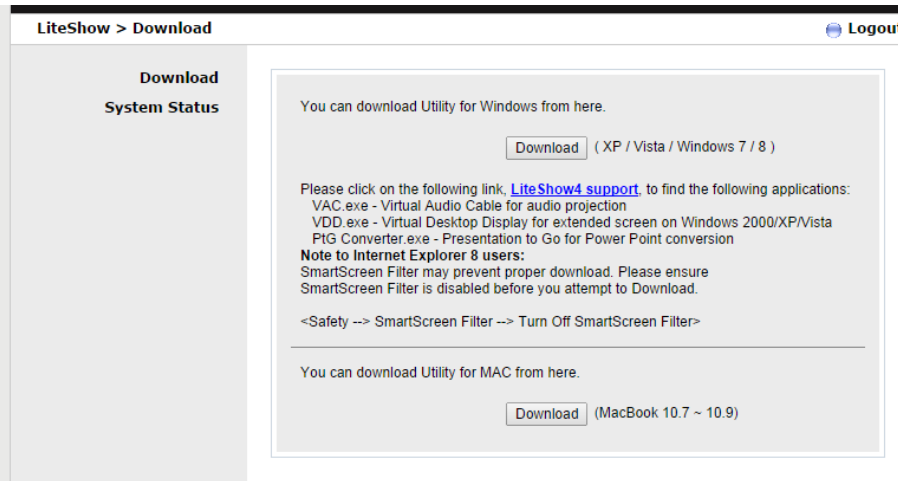
Password Login

WebSlides
(View Projecting Screen)

Copyright © 2014 InFocus Corporation. All rights reserved.

Download

Available to all users, regardless of which login is used.



- 1) From the **Download** window, select the appropriate client software that corresponds to your operating system, and click **Download** to start the installation program.
- 2) Follow the Installation Wizard instructions.
Note: If a **Windows Security Alert** window displays, click **Unblock** to continue installation.
- 3) Once installation is complete, a LiteShow shortcut will appear on your desktop.

Note to System Administrators: If you save the "LiteShow4.exe" installation file to an accessible folder, you can invoke it in a script as "LiteShow4.exe /VERYSILENT." This causes LiteShow to install without prompts and silently terminate without launching LiteShow at the end of the installation process.

System Status

Available to all users, regardless of which login is used. This page displays a variety of network-related information, including the IP address of LiteShow, whether it is currently projecting, and how many users are currently connected to the device.

InFocus

LiteShow > System Status Logout

Download System Status Conference Control Admin	Model Name	LiteShow
	Versions	
	Firmware Version	1.0.0.3
	Network Status	
	IP Address	192.168.100.10
	Subnet Mask	255.255.255.0
	Default Gateway	192.168.100.10
	Wireless MAC Address	00:12:5F:0B:1F:52
	Wire MAC Address	00:12:5F:12:37:89
	Connection Status	
	Projecting Status	Waiting for Projecting
	Total Users	0
	Code	2414

Copyright © 2014 InFocus Corporation. All rights reserved.

Conference Control

Available only to users logged in as either Basic or Admin Users. Conference Control allows you to easily change presenters and to display up to four presentations at one time.

InFocus

LiteShow > Conference Control Logout

Download
System Status
Conference Control

Allow control from this page only.

Name	Play Control	IP Address
User-1	1 2 3 4	192.168.168.81
User-2	1 2 3 4	192.168.168.106

Copyright © 2014 InFocus Corporation. All rights reserved.

To allow users to project freely: Uncheck the **Allow control from this page only** box.

To change presenters: Review the available presenters listed under Name and click the Play Control options associated with the desired presenter.

To enable QuadView: Review the available presenters listed under Name and click 1, 2, 3 or 4 in the Play Control options list.

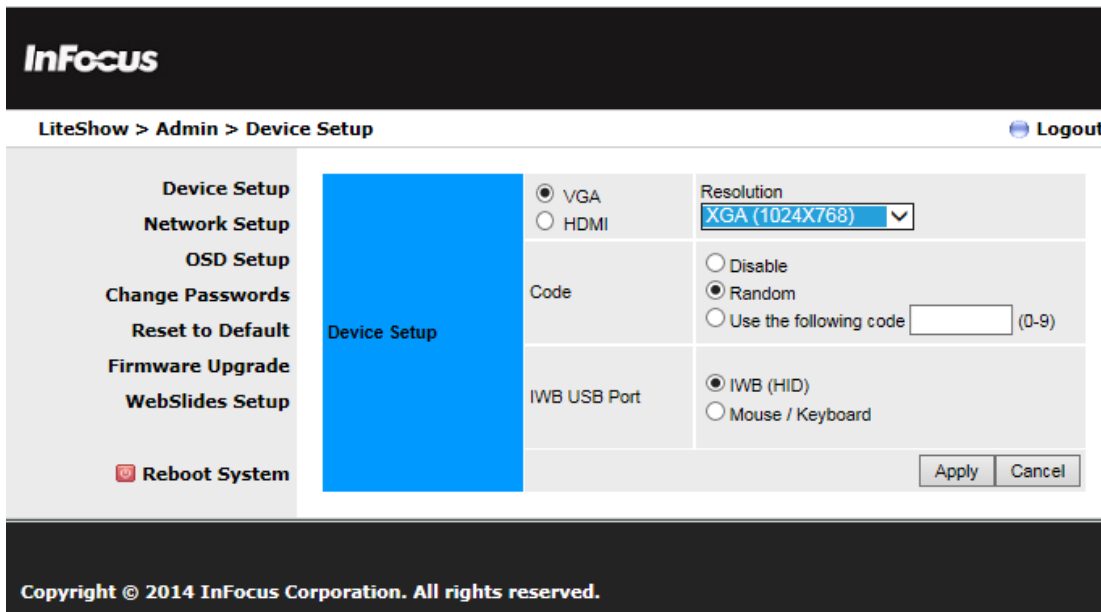
Play Control Options	
	Full-screen presentation
	Displays presentation in Quadrant #1
	Displays presentation in Quadrant #2
	Displays presentation in Quadrant #3
	Displays presentation in Quadrant #4
	Stops presentation

Admin

Available only to users logged in as Admin Users. Clicking on Admin provides additional administrative options.

Device Setup

Allows you to select the input type, the projector's resolution, and IWB USB port, and disable, randomize or apply a static Login Code.



Network Setup

By default, the LiteShow device is a DHCP client. When the LiteShow module is connected to a LAN that already has a DHCP server present, the LiteShow module takes an IP address assigned to it by the server. When the LiteShow module is connected to a LAN that does not have a DHCP server, the LiteShow module becomes the DHCP server in the network.

InFocus

LiteShow > Admin > Network Setup Logout

- Device Setup
- Network Setup**
- OSD Setup
- Change Passwords
- Reset to Default
- Firmware Upgrade
- WebSlides Setup
- Reboot System

IP Setup	<input checked="" type="radio"/> Obtain an IP address automatically <input type="radio"/> Use the following IP address	
	IP Address	192 . 168 . 100 . 10
	Subnet Mask	255 . 255 . 255 . 0
	Default Gateway	192 . 168 . 100 . 10
DHCP Server Setup	<input checked="" type="radio"/> Auto <input type="radio"/> Disable	
	Start IP	192 . 168 . 100 . 11
	End IP	192 . 168 . 100 . 254
	Subnet Mask	255 . 255 . 255 . 0
	Default Gateway	192 . 168 . 100 . 10
Wireless Setup	Wireless LAN	<input checked="" type="radio"/> Enable <input type="radio"/> Disable
	SSID Broadcast	<input checked="" type="radio"/> Enable <input type="radio"/> Disable
	Channel	Auto
	Encryption	Disable
	Key	<input type="text"/> <input checked="" type="checkbox"/> Hide characters
	Channel Bandwidth	<input type="radio"/> 20MHz <input checked="" type="radio"/> Auto
	Existing AP SSID	<input type="text"/>
Ap Client	Connect to Existing AP	<input type="radio"/> Enable <input checked="" type="radio"/> Disable
	Encryption	Disable
	Key	<input type="text"/> <input checked="" type="checkbox"/> Hide characters
GateKeeper	<input checked="" type="radio"/> All Pass <input type="radio"/> All Block <input type="radio"/> Internet Only	
SNMP	<input checked="" type="radio"/> Enable <input type="radio"/> Disable	

Apply Cancel

IP Setup

You can select **Obtain IP address automatically** or **Use the following IP address**.

IP Address: The default value is 192.168.100.10.

Subnet Mask: The default value is 255.255.255.0

Default Gateway: The default value is 192.168.100.10

DNS Server: *Enter the values for your network*

DHCP Server Setup

Enable or disable the DHCP server automatically, or disable it altogether.

Start IP: The start IP address of DHCP Server.

End IP: The end IP address of DHCP Server.

Subnet Mask: *Enter the values for your network*

Default Gateway: *Enter the values for your network*

DNS Server: *Enter the values for your network*

Wireless Setup

Wireless LAN: "Enable" or "Disable" the Wireless LAN.

Embedded AP SSID/Name: Type the device name.

SSID Broadcast: SSID string, maximum length is 32 bytes. (No spaces)

Channel: You can set fixed channel or choose Auto. After powering on the LiteShow, choosing "Auto" will scan all wireless channels and select one clear channel automatically.

Encryption: Disable or select a wireless encryption preference (WEP/WPA/WPA2 64-bit or 128-bit in ASCII or HEX string).

Key: If Encryption is enabled, a key value must be set based on the selected encryption mode.

AP Setup

The AP Setup feature allows LiteShow to connect to the corporate network as a wireless client rather than through the RJ45 wired connection.

Connect to Existing AP: To setup LiteShow as a wireless client, choose “Enable.” Note: Enabling the Wireless Client will disable both the wired RJ45 connection and Gatekeeper (Gatekeeper will be set to “All Pass”). Disabling the Wireless Client will restore the RJ45 wired connection.

Existing AP SSID: the SSID string of the corporate wireless LAN (maximum length 32 bytes; no spaces).

Encryption: the encryption method required to access the corporate wireless LAN (WEP/WPA/WPA2 64-bit or 128-bit in ASCII or HEX string).

Key: the value required to access the corporate wireless LAN. Used only when Encryption is enabled.

Gatekeeper

Designed to ensure enterprise network security.

All Pass: allows Guest Users connected through a wireless connection to access the office network (LAN).

All Block: prevents Guest Users connected through a wireless connection from accessing the office network (LAN).

Internet Only: prevents Guest Users from accessing the office network (LAN), but still allows internet traffic (browser packets i.e. port 80, 443) to pass through.

SNMP

Allows you to enable or disable SNMP services.

OSD Setup

Allows you to customize the LiteShow standby image with a personal image and/or restore the original standby image. In addition, you can control how the device information and screen saver is displayed.

InFocus

LiteShow > Admin > OSD Setup Logout

- Device Setup
- Network Setup
- OSD Setup
- Change Passwords
- Reset to Default
- Firmware Upgrade
- WebSlides Setup
- Reboot System**

Change Standby Image

Image Name: Default

Restore to default

File Name: Browse...

Image File Upload

The image file need to be JPG format and the maximum file size is 5MB.
(Recommended image resolution : 1024X768)

Display Option

Device Information: Show All Hide All

Overlay Device Information: Enable Disable

Screen Saver Settings: Enable Disable

Idle Time (Minutes): 5

Apply Cancel

Copyright © 2014 InFocus Corporation. All rights reserved.

Change Passwords

Allows you to reset the passwords for Basic User and/or Admin User.

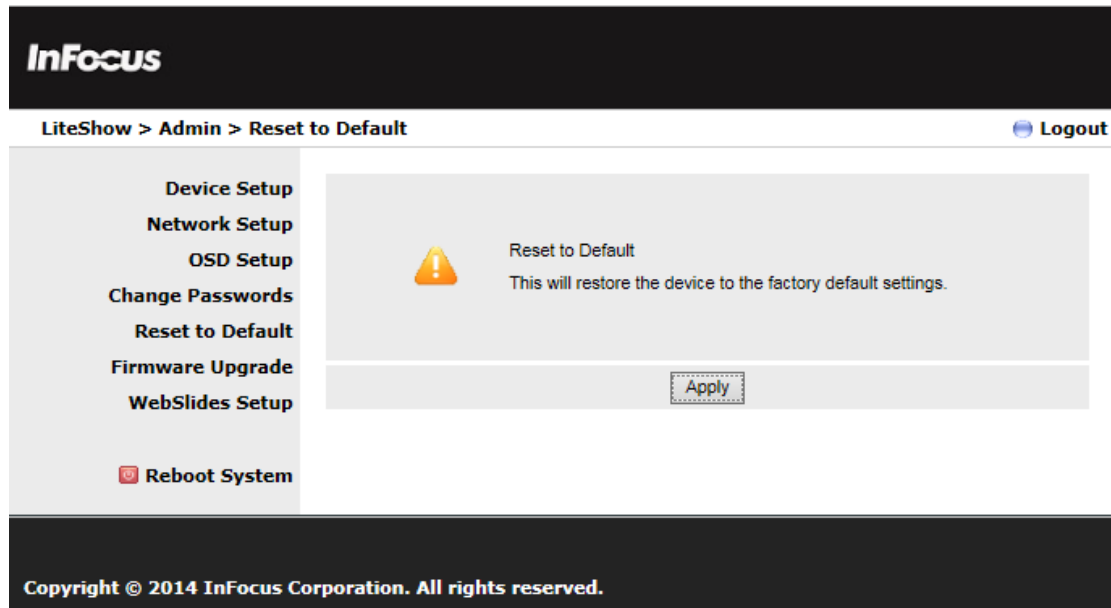
The screenshot shows the InFocus LiteShow Admin interface. At the top left is the InFocus logo. Below it is a breadcrumb trail: LiteShow > Admin > Change Passwords. On the top right is a Logout button. A left-hand navigation menu lists several options: Device Setup, Network Setup, OSD Setup, Change Passwords (which is highlighted), Reset to Default, Firmware Upgrade, WebSlides Setup, and Reboot System. The main content area is divided into two sections: Basic User and Admin User. Each section has two input fields: 'Enter New Password' and 'Confirm New Password', followed by an 'Apply' button.

Device Setup Network Setup OSD Setup Change Passwords Reset to Default Firmware Upgrade WebSlides Setup Reboot System	Basic User		
	Enter New Password	<input type="text"/>	<input type="button" value="Apply"/>
	Confirm New Password	<input type="text"/>	
	Admin User		
	Enter New Password	<input type="text"/>	<input type="button" value="Apply"/>
	Confirm New Password	<input type="text"/>	

Copyright © 2014 InFocus Corporation. All rights reserved.

Reset to Default

Restores LiteShow to factory default settings.



Alternatively, factory default settings can also be restored as follows:

- 1) Turn off the LiteShow module.
- 2) Press and hold the **Reset** button on the bottom of the LiteShow module.
- 3) Turn on the LiteShow module.
- 4) Wait for at least 10 seconds and release the **Reset** button.
- 5) Factory default settings should be restored.

Firmware Upgrade

Used for upgrading the LiteShow firmware, and for importing and exporting configuration settings (this is helpful when multiple LiteShow devices are being configured).

The screenshot shows the InFocus Admin interface for the Firmware Upgrade section. The breadcrumb trail is 'LiteShow > Admin > Firmware Upgrade'. The left-hand menu includes: Device Setup, Network Setup, OSD Setup, Change Passwords, Reset to Default, Firmware Upgrade (highlighted), WebSlides Setup, and Reboot System. The main content area is titled 'System Configuration' and contains the following elements:

- 'Export System configuration' with an 'Export' button.
- A text input field with a 'Browse...' button and an 'Import' button.
- 'Firmware Version' set to 1.0.0.3.
- 'Release Date' set to 20140804.
- A warning message: 'Please stop the projection function first before you apply the Upgrade button!!'.
- 'File Name' with a 'Browse...' button and an 'Upgrade' button.

At the bottom of the page, the copyright notice reads: 'Copyright © 2014 InFocus Corporation. All rights reserved.'

To update your LiteShow firmware:

- 1) Connect the LiteShow device to your network RJ45 connector before updating. (Do not update wirelessly.)
- 2) Download the latest firmware image file (*.awd) from the InFocus support site (www.infocus.com/support) to your computer.
- 3) Choose **Firmware Upgrade** from the left-hand menu.
- 4) Click **Browse** and open the firmware image file you previously downloaded to your computer.
- 5) Click **Upgrade**. **Note:** This process will take several minutes.
- 6) After a message appears stating the update has been successful, click **OK** and begin using LiteShow.

WebSlides Setup

Allows you to adjust the Auto Refresh Interval and Access Password Control.

InFocus

LiteShow > Admin > WebSlides Setup Logout

- Device Setup
- Network Setup
- OSD Setup
- Change Passwords
- Reset to Default
- Firmware Upgrade
- WebSlides Setup
- Reboot System

Auto Refresh Interval (second)

- Manual Refresh
- 10 *recommended maximum concurrent users. (10)
- 20 *recommended maximum concurrent users. (15)
- 30 *recommended maximum concurrent users. (20)
- 45 *recommended maximum concurrent users. (25)
- 60 *recommended maximum concurrent users. (30)
- 90 *recommended maximum concurrent users. (35)

Access Password Control

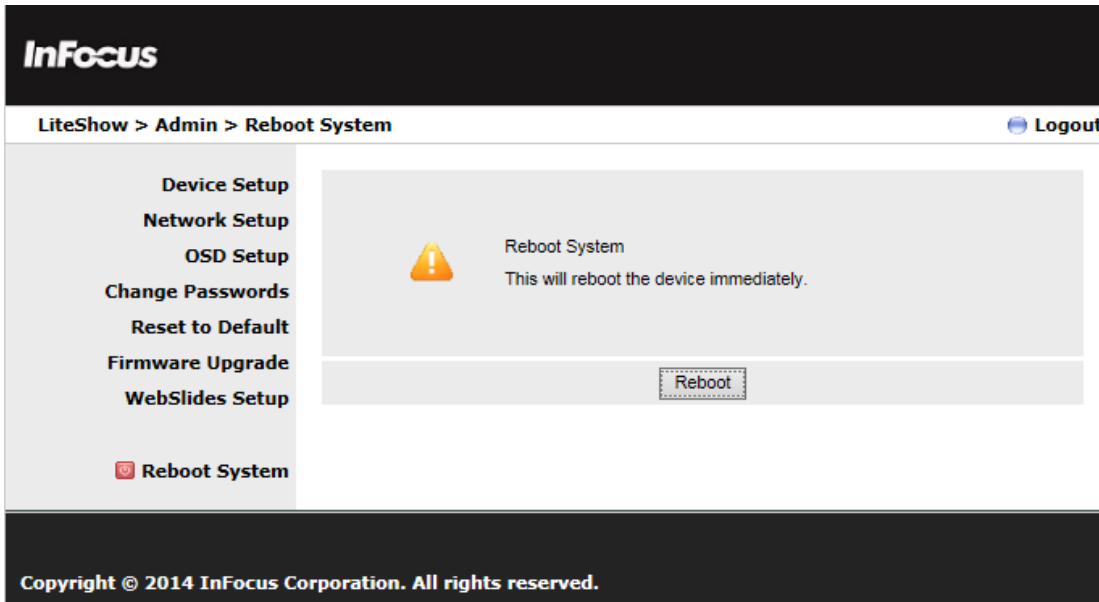
- Disable
- Use the same password as "Code"
- Use the following Code: (0-9)

Note
If there are more than 10 users logged into LiteShow, it is recommended to connect LiteShow to company network through Ethernet or bridge LiteShow to a router due to wireless bandwidth concern. User should connect LiteShow via company network or router in order to secure the projection performance.

Copyright © 2014 InFocus Corporation. All rights reserved.

Reboot


Restarts the LiteShow system.



InFocus

LiteShow > Admin > Reboot System Logout

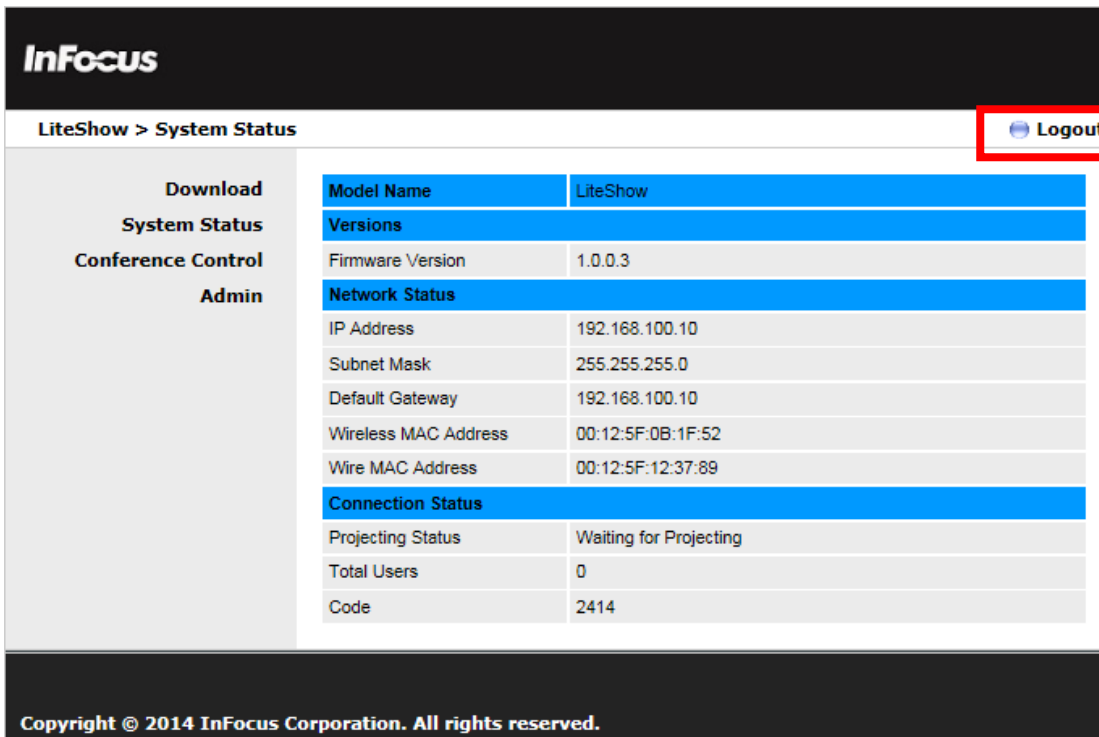
- Device Setup
- Network Setup
- OSD Setup
- Change Passwords
- Reset to Default
- Firmware Upgrade
- WebSlides Setup
- Reboot System**

 **Reboot System**
This will reboot the device immediately.

Copyright © 2014 InFocus Corporation. All rights reserved.

Logout

Exits the LiteShow web page.



InFocus

LiteShow > System Status Logout

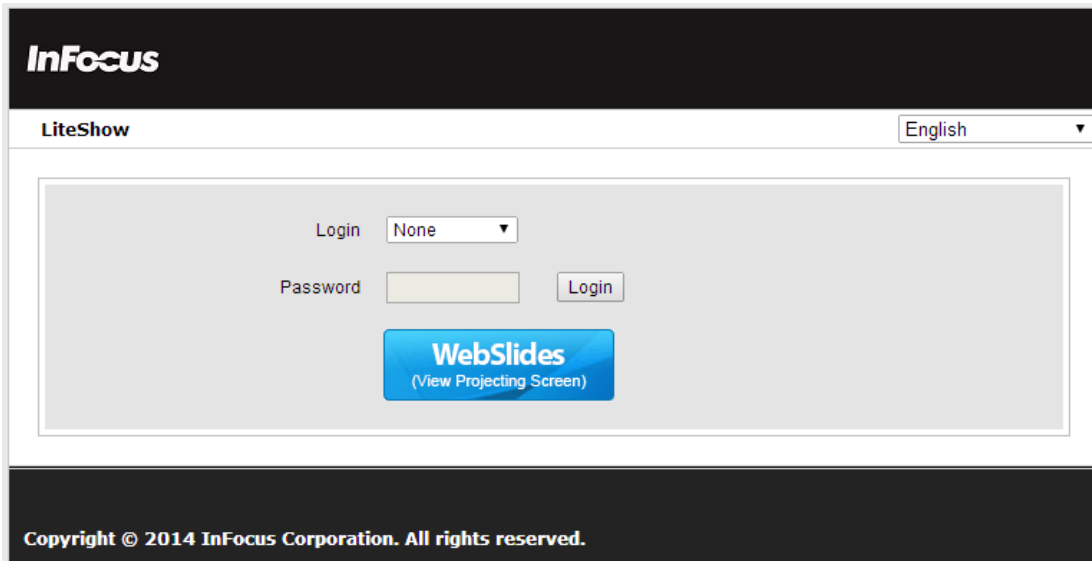
- Download
- System Status
- Conference Control
- Admin

Model Name	LiteShow
Versions	
Firmware Version	1.0.0.3
Network Status	
IP Address	192.168.100.10
Subnet Mask	255.255.255.0
Default Gateway	192.168.100.10
Wireless MAC Address	00:12:5F:0B:1F:52
Wire MAC Address	00:12:5F:12:37:89
Connection Status	
Projecting Status	Waiting for Projecting
Total Users	0
Code	2414

Copyright © 2014 InFocus Corporation. All rights reserved.

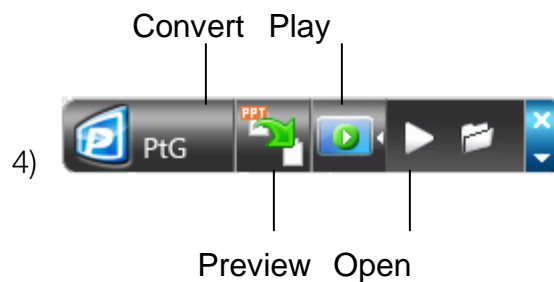
Start WebSlides

Click the **WebSlides** button to start the WebSlides feature. See the [Launch WebSlides](#) section for more information.



Appendix A: Using PtG Converter

- 1) Download the PtG Converter application from the LiteShow USB token or from the InFocus website at: www.infocus.com/support.
- 2) Once installed, the converter will reside in the MobiShow\MobiShow PtG Converter folder within Programs.
- 3) Launch the PtG Converter and the following control panel will display:



- 5) Click **Convert** to select and start conversion of the desired PowerPoint presentation. PtG Converter will convert the PowerPoint file to a PtG format. **Note:** Before clicking **Convert**, turn off all extended monitors. Only the primary monitor should be active to ensure proper PtG conversion.
- 6) After successfully converting the file, you can use any of the following controls:
 - a. **Preview** expands and collapses the preview pane.
 - b. **Play** plays the selected PtG file.
 - c. **Open** allows another PtG file to be opened.

Appendix B: LiteShow Port Map

LiteShow uses the following ports for network traffic. It may be necessary for the network administrator to configure the network to pass broadcast packets on ports 1047, 1048, and 1049 to enable the LiteShow application to correctly discover LiteShow modules on a complex network.

Socket	Direction	Usage	Port#
TCP	Client -> Device	Command	443
			3268
			389
	Device -> Client	Data	8080
			21
			515
		Video	1041
UDP	Bi-directional Broadcast	Device Discovery	1047
			1048
			1049

Appendix C: Configuring LiteShow for Specific Environments

Profiles and Menu Options allow the user/administrator to customize LiteShow startup behavior for particular situations. Here are some examples:

PC always connects to the same display

Create and save a profile for the display. Turn on Auto Profile Connect. Turn off Auto WiFi Connect, if you will access the display over your normal network connection. Use Auto Change PC Resolution to set a default action and avoid repetitive startup prompts.

PC connect to a limited number of displays

Create and save a profile for each display – use a descriptive name for each profile. Turn off Auto WiFi Connect, if you will access the display over your normal network connection. Use Auto Change PC Resolution to set a default action and avoid repetitive startup prompts.

Running LiteShow on a PC where System Folders are locked down by IT

Run LiteShow from the USB token. From the LiteShow menu, select Copy Application to Desktop. Place the resulting LiteShow4 folder anywhere in your Documents folder structure and put a link to the LiteShow4.exe program somewhere easy to find. Then run LiteShow from that folder and configure it normally – LiteShow will store and use configuration information in the startup folder when it is not installed in the System Program Files structure.

Locking a USB token to a specific Display

When you run LiteShow from a USB token, it will store and use configuration information in the startup folder on the USB token. To create a token locked to a specific display, run LiteShow from the token and follow the same steps as above for “PC always connects to the same display.” Network connect configuration will be stored on the token and applied at startup. Separate tokens can be configured for employees and guests to reflect appropriate connection strategies as defined by the administrator.

Rolling out Custom Configurations to Large Installs

Rollout using a script which invokes “LiteShow4.exe /VERYSILENT” to cause LiteShow to install without prompts and exit after install is complete. Use the same script to distribute custom wps.ini (configuration) and profile.ini (saved profiles) into the <User>\Appdata\LiteShow4 folder. Both .ini files are simple text files. Username in profile.ini, for example, can be customized by the rollout script.

Free Manuals Download Website

<http://myh66.com>

<http://usermanuals.us>

<http://www.somanuals.com>

<http://www.4manuals.cc>

<http://www.manual-lib.com>

<http://www.404manual.com>

<http://www.luxmanual.com>

<http://aubethermostatmanual.com>

Golf course search by state

<http://golfingnear.com>

Email search by domain

<http://emailbydomain.com>

Auto manuals search

<http://auto.somanuals.com>

TV manuals search

<http://tv.somanuals.com>