

LiteShow® WIRELESS FREEDOM FOR YOUR PROJECTOR.

USER'S GUIDE



Infocus®



Declaration of Conformity

Manufacturer: InFocus Corporation, 27700B SW Parkway Ave. Wilsonville, Oregon 97070 USA
European Office: Strawinskylaan 585, 1077 XX Amsterdam, The Netherlands

We declare under our sole responsibility that the LiteShow wireless projection adapter conforms to the following directives and norms:

EMC Directive 89/336/EEC, Amended by 93/68/EEC

EMC: EN 55022

EN 55024

EN 61000-3-2

EN 61000-3-3

Low Voltage Directive 73/23/EEC, Amended by 93/68/EEC

Safety: EN 60950: 2000

The Agency/Regulatory Approval for the computer's wireless adapter is solely the responsibility of the adapter manufacturer - not InFocus Corporation.

May, 2003

Trademarks

Apple, Macintosh, and PowerBook are trademarks or registered trademarks of Apple Computer, Inc. IBM and PS/2 are trademarks or registered trademarks of International Business Machines, Inc. Microsoft, PowerPoint, and Windows are trademarks or registered trademarks of Microsoft Corporation. InFocus, LiteShow, and LP are trademarks or registered trademarks of InFocus Corporation.

User's Guide Travel Restrictions

You must keep this User's Guide with your LiteShow adapter at all times when travelling in countries other than the United States of America.

FCC Warning

This equipment has been tested and found to comply with the limits for a Class A digital device, pursuant to part 15 of the FCC Rules. These limits are designed to provide reasonable protection against harmful interference when the equipment is operated in a commercial environment. This equipment generates, uses, and can radiate radio frequency energy and, if not installed and used in accordance with the instruction manual, may cause harmful interference to radio communications. Operation of this equipment in a residential area is likely to cause harmful interference in which case the user will be required to correct the interference at his own expense. The Agency/Regulatory Approval for the computer's wireless adapter is solely the responsibility of the adapter manufacturer - not InFocus Corporation.

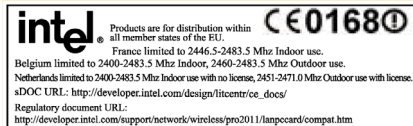
Canada

This Class A digital apparatus complies with Canadian ICES-003.
Cet appareil numérique de la classe A est conforme à la norme NMB-003 du Canada.

EN 55022 Warning

This is a Class A product. In a domestic environment it may cause radio interference, in which case the user may be required to take adequate measures.

Radio Frequency/Channel Restriction Information



Agency Approvals

UL, c-UL, TÜV, NOM, IRAM, GOST, C-Tick

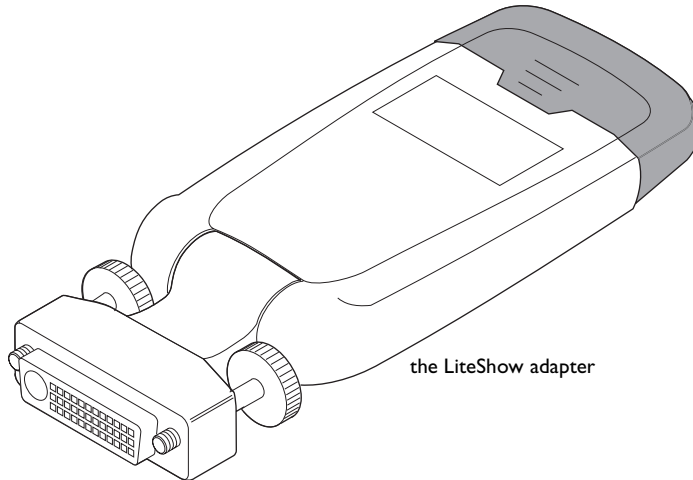
Contents

Introduction	1
What is LiteShow?	2
Contents	4
About the documentation	5
If you need assistance	5
Projecting via LiteShow	7
About the LiteShow Adapter	7
The LiteShow Splash Screen	9
The LiteShow Manager	11
Settings Window	15
Troubleshooting and Frequently Asked Questions	21
Troubleshooting	21
Frequently Asked Questions	22
Glossary	25
Appendix	27
Specifications	27
Accessories	28
Compatible projectors	29



Introduction

Congratulations. You have chosen to step into the future of wireless projection through the use of the InFocus® LiteShow® cable-free digital projection system. LiteShow is a powerful and secure wireless multimedia projection adapter which allows you to send sharp images from a PC or Macintosh computer to a compatible projector. LiteShow is easy to set up and configure, and it eliminates the need to carry and connect computer cables.

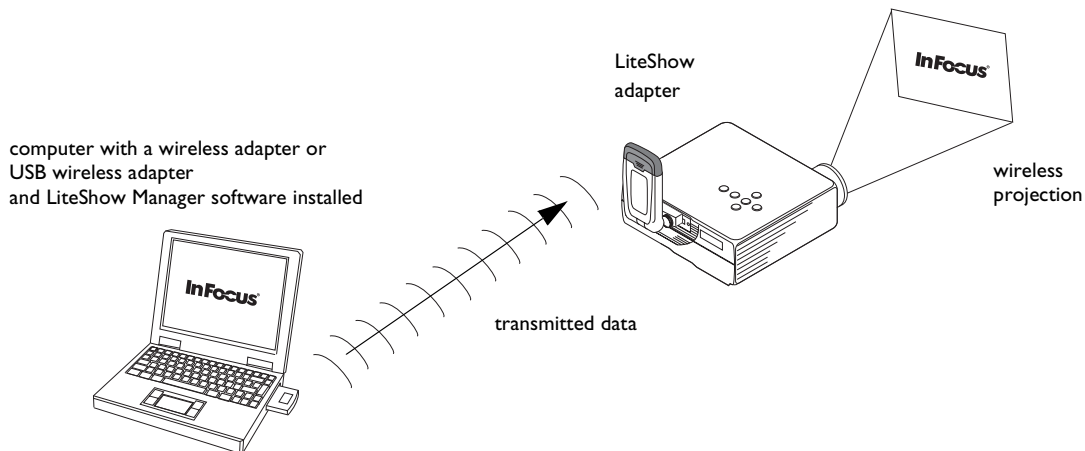


If you haven't yet set LiteShow up, you can go ahead and do so now by following the instructions in the *Quick Start Guide* that came with your LiteShow.

Be sure to register your LiteShow online at www.infocus.com/service/register to receive product updates, announcements, and registration incentives.

What is LiteShow?

The sleek LiteShow adapter contains an 802.11b compliant wireless radio that works in tandem with the proprietary LiteShow Manager software and a wireless LAN adapter or a USB wireless adapter connected to your computer. This combination gives you presentations that are as sharp the best tethered projector and computer setup.



LiteShow and the projector

The LiteShow adapter connects to a compatible projector by plugging its embedded M1 connector into a projector's M1 receptacle. The adapter's latch mechanism is attached by tightening the two thumbscrews. If the projector's Auto-Source option is on, source selection in the projector automatically switches to the standard M1 connector when data from the LiteShow adapter becomes available.

Please note that LiteShow is designed for business presentations, such as Microsoft® PowerPoint®, but not for video or multimedia displays like a DVD.

LiteShow and the computer

The LiteShow adapter communicates to supported computers via the source computer's wireless LAN adapter (integrated or PC card) or USB wireless adapter. This communication provides a data path that results in wireless projection.

Managing LiteShow

The LiteShow Manager interface allows you to project to any LiteShow-enabled projector within range. It also lets you set application preferences and adjust the LiteShow adapter's settings. For example, you can rename the LiteShow adapter and the LiteShow adapter's network, or specify the LiteShow adapter's IP address.

Security

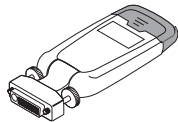
LiteShow's encryption technology delivers security similar to that found in computer-to-projector cabled setups.

Capabilities

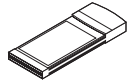
LiteShow has a line-of-sight range of up to 300 feet (91.44 meters) and a data rate of up to 11Mbps. However, keep in mind that range and data rate can be lessened by distance, walls or other wireless devices. LiteShow also handles up to XGA (1024x768) resolution along with 24-bit color depth.

Contents

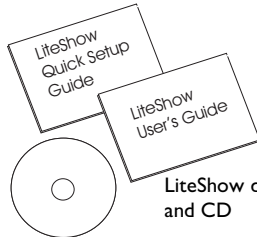
Your LiteShow system comes with the items shown in the graphic immediately below. Note that the wireless PC card adapter* is optional. This depends on if you bought the LiteShow system that comes with a wireless adapter or if you already have an adapter and opted for the package that comes without a wireless adapter.



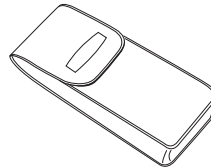
LiteShow adapter



wireless PC card adapter *



LiteShow documentation
and CD



LiteShow carrying case

* optional depending on which LiteShow offering you purchased

About the documentation

Use the *LiteShow Quick Start Guide* included in the LiteShow packaging to install and set up and LiteShow. The *LiteShow User's Guide* contains more information and can be used to fine tune your wireless projection settings to match your needs or to troubleshoot problems you may run into. You can also use the online-Help file to guide you with questions while operating the LiteShow Manager.

Both this User's Guide and the Quick Start Guide are available on the included CD as Adobe Acrobat PDF files.

If you need assistance

The first place to look for help is in this User's Guide. Be sure to check the guidelines in the Troubleshooting section on page 21. Or, check the Service and Support section of our website at <http://www.infocus.com/service>.

If those sources don't answer your question, call InFocus Customer Service in the United States directly at **1-800-799-9911**. Call between 6 a.m. and 6 p.m. PST, Monday through Friday. Service is available in North America after hours and on weekends for a fee at 1-888-592-6800.

You can also send us an e-mail at techsupport@infocus.com. Our World Wide Web address is <http://www.infocus.com>.

Projecting via LiteShow

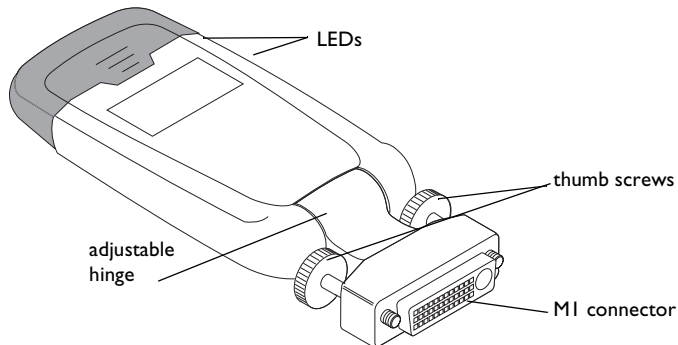
This section gives you more detail on LiteShow and its parts and features. Reading this section should give you a better understanding of the LiteShow system and allow you to, if needed, make changes to it.

About the LiteShow Adapter

Before you begin projecting via LiteShow, take a minute to examine the LiteShow adapter and keep the following in mind while you use it. The LiteShow adapter is a well-constructed adapter for wireless projection. However, in order to keep it working for you there are several points that you need to pay attention to.

Note: If you have not attached the LiteShow adapter to a projector and installed the LiteShow software on your computer yet, you should go ahead and do so now by following the instructions in the *LiteShow Quick Start Guide* that came in your LiteShow packaging.

The LiteShow adapter contains the following features:



LiteShow adapter tips

In regards to your LiteShow adapter, keep the following in mind:

- Be careful with the LiteShow adapter: do not drop it or otherwise abuse it. Keep the LiteShow adapter in its carrying case when you are not using it.
- The hinge on the LiteShow adapter should be used for positional purposes and repeatedly flexing it is not recommended.
- The blinking LEDs on the side of your LiteShow adapter let you know that it is operational and capable of communicating with your wireless adapter.
- When you secure the LiteShow adapter to the projector with the two thumb screws, be very careful to not overtighten them.
- Please do not remove the dark plastic top of the LiteShow adapter unless directed to do so by InFocus service and support personnel.

The LiteShow Splash Screen

Once you've attached the LiteShow adapter to a projector and powered that projector on, you should see the LiteShow Splash Screen, as depicted below.



LiteShow Splash Screen

The LiteShow Splash Screen is a small window that appears in the upper left corner of the projected screen. If you can see it, then you know that the projector is powered on, the M1 connector is the source, and that a LiteShow adapter is connected to it.

Once visible, the LiteShow Splash Screen displays the following informational items:

Name: The name of the LiteShow adapter. The default is myLiteShow.

Unique ID: A unique identification string that distinguishes your LiteShow adapter from others in the area.

WLAN: The name of the WLAN LiteShow is connecting to. The default is LiteShow.

Model: The model number of the projector the LiteShow adapter is attached to.

Version: The LiteShow adapter's current firmware version.

IP: The LiteShow adapter's IP address. It can be automatically assigned or manually assigned.

If you cannot see the LiteShow Splash Screen after you've attached it to a projector and powered the projector on, confirm that Auto Source is selected on your projector and that the M1 source is connected. If that doesn't help, try powering the projector off. Wait a few minutes, until the projector's LEDs let you know it is ready to be powered on, then reattach the LiteShow adapter and power the projector back on again.

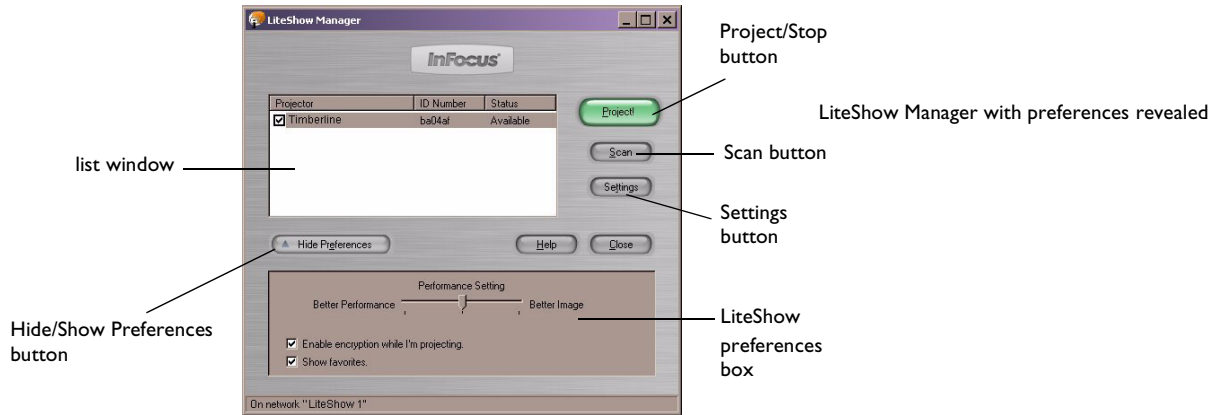
If you are having other trouble getting LiteShow to wirelessly project, consult the "Troubleshooting" and "Frequently Asked Questions" sections beginning on page 21.

The LiteShow Manager

The LiteShow Manager is your primary tool for controlling the LiteShow adapter and projecting wirelessly. To start it, navigate to **Start>Programs>InFocus>LiteShow** and select **LiteShow Manager** from the open folder. For Apple users, go to **Finder>New Finder Window>InFocus>LiteShow Manager** and double-click the **LiteShow Manager** icon.

If you opted to place a shortcut to LiteShow Manager on your desktop during installation, you can double-click the **LiteShow Manager** desktop icon instead.

Once opened, the LiteShow Manager populates its list window with all LiteShow-enabled projectors found on your current WLAN.



The list window

The list window contains four columns:

- **Favorites:** When you check this box for a projector, the list window displays these projectors whether their status is Unknown, In Use, or Available. The Favorites column is helpful because you can quickly locate your most frequently LiteShow enabled projectors here.
- **Projector:** By default, the order of projectors is sorted by status and the secondary sort is by projector name. The first Available projector in the list is highlighted by default. If there are no available projectors in the list, then the first favorite (see “Show Favorites” on page 15) projector is highlighted by default.
- **ID Number:** A unique identification string that distinguishes your LiteShow from others in the area.
- **Status:** The Status column indicates whether each projector is Available, In Use, or Unknown.
 - If a projector is Available you should be able to connect to it.
 - If a projector is In Use it is being used and cannot be connected to unless the user disconnects from it.
 - If projector is Unknown it is not on the current WLAN.

Project/Stop button

If an Available or Unknown projector is selected, the **Project** button is the default button. The **Project** button is disabled if there are no projectors found.

Note: You can only select an Available or Unknown projector. Projectors that are In Use appear in the list but are grayed out.

When you select an available projector and click the **Project** button (or hit the Enter key), the screen projection application begins. Once the screen projection application starts (that is, your desktop is shown as the projected image), the button toggles to **Stop** and the status of the selected projector flips to In Use.

One of three things can happen when you select a projector whose status is Unknown:

- The projector is found and is available, which projects the contents of your desktop onto the projection screen.

- The projector cannot be found (it's either out of range or turned off), which generates an alert message.
- The projector is found but is in use, which generates an alert message.

Scan Button

The **Scan** button searches for LiteShow-enabled projectors and is active unless you are currently projecting. Once clicked, the **Scan** button opens an alert message that lets you know that current network activities will be disrupted while the scanning process occurs. It is best to close all network related files before continuing. After that, a progress bar fills during the scan and closes upon completion.

If more LiteShow-enabled projectors are found, they appear in the list window. If no more LiteShow-enabled projectors are found, then you are told that no more LiteShow-enabled projectors were found.

Note: If the Scan button is disabled, consult the OID FAQ on page 22.

Settings Button

The **Settings** button is enabled when an available projector, or the projector that you are currently using, is selected. Clicking it opens the Settings window box. The Settings window box, discussed on page 15, contains the Settings tab and the Diagnostics tab.

Preferences box

The Preferences box is available at the bottom of the LiteShow Manager when the **Show Preferences** button is clicked. While it is available, you can click the **Hide Preferences** button to close it.

Performance Setting

The **Performance Setting** contains a slide bar with three settings for your desktop's display resolution that range from **Better Performance** to **Better Image**. **Better Performance** means a faster display of your desktop by the LiteShow-enabled projector, while **Better Image** means that the projected image will be sharper.

The slide bar defaults to the middle setting. The table below shows what the display resolution is for each setting:

System	Left	Middle	Right
PC	800 x 600 x 16 bit color	1024 x 768 x 16 bit color	1024 x 768 x 24 bit color
Mac	800 x 600 x thousands of colors	1024 x 768 x thousands of colors	1024 x 768 x millions of colors

The **Performance Setting** selection is invoked when LiteShow projects. When the projection stops, your previous display resolution setting (if different) is restored.

Enable encryption while I'm projecting

The default state for **Enable encryption while I'm projecting** is disabled (not checked). It allows you to project with security similar to a cabled computer to projector setup.

When the **Enable encryption while I'm projecting** option is checked, a six-digit code number displays on the projected image screen after you click the **Project** button. You need to enter this code when prompted by a window that asks you to "Enter the code displayed by the projector your wish to use". Entering this code ensures that your wireless projection is secure.

Show Favorites

Checking this box allows the LiteShow Manager to show just the projectors that are set as favorites. Favorites are designated when you check the **Favorites** checkbox for a projector in the list window's Favorites column. When this option is left unchecked, the Favorites column is not available in the list window.

Settings Window

Note: When discussing "Settings," keep in mind that the Settings Window options are for the LiteShow adapter, while the settings in the Preferences box are for your computer.

Clicking the **Settings** button in the LiteShow Manager causes the Settings window to open. When projecting, the **Settings** button is disabled. The Settings window contains two tabs:

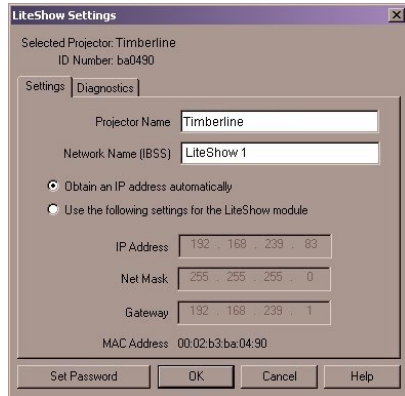
- **Settings:** The settings provided in the Settings tab are: **Projector Name**, **Network Name (IBSS)**, **Channel**, and **IP Address**. The LiteShow adapter's default **MAC Address** is provided as read-only information.

Note: you can choose to obtain an IP address automatically or specify the IP Address, Net Mask, and Gateway. However, please be aware that setting a static IP address requires that all computers using the LiteShow-enabled projector must be set to the same range.

- **Diagnostics:** The Diagnostics tab allows you to check and see if your computer's wireless adapter or USB wireless adapter is communicating with your LiteShow adapter.

Settings Tab

The fields in the Settings tab are populated with the selected projector's settings.



LiteShow Settings window - Settings tab

Projector Name: By default, the name is myLiteShow, but you should change it to distinguish it from other LiteShow adapters on the WLAN. The name you give your LiteShow adapter should be no longer than 32 characters.

Network Name (IBSS): This is the network between your LiteShow adapter and your computer with a wireless adapter or USB wireless adapter. By default, the name is LiteShow, but you should change it to something unique. Keep in mind that if you change the name of a network, the network is briefly disrupted.

IP Address: There are two IP options. The first is to **Obtain the IP automatically** which should work in most cases. If your network administrator wants you to use specific address information ask him or her to provide you with an **IP Address**, **Net Mask**, and **Gateway**.

The **MAC address** is read only. The MAC address can be useful because it is unique to each LiteShow adapter and physically resides on the module itself. You can use this to confirm that you are working on the correct module.

Set Password: When you click the **Set Password** button, the LiteShow Settings Password window opens. It is recommended that you set a password for your LiteShow system, as it keeps your LiteShow Manager settings from being changed by other users. The following steps explain how to set your password.



- 1 Click the **Set Password** button to open the LiteShow Settings Password window.
- 2 Enter a password between 4 and 16 characters long in the top text field and the retype it in the lower text field to confirm it.
- 3 Click the **OK** button to save the password and close the window. The Settings tab is still open, but the **Set Password** button toggles to **Change Password**. The next time you click the Settings tab, all of its settings and controls are read-only and the button in the lower reads **Enter Password**.
When you click the **Enter Password** button, a password window appears and prompts you for the password. If the password entered is correct, the text fields and controls in the Settings and Diagnostics tabs are enabled and the **Enter Password** button toggles to **Change Password**.

4 Click **OK** to close the Settings window and return to the LiteShow Manager.

Note: If you prefer to have no password after setting one up, click the **Change Password** button, enter your old password, leave the two New Password fields blank, then click the **OK** button.

The Diagnostics Tab

The Diagnostics tab contains buttons for blinking the LED and restoring the LiteShow adapter's factory settings. You can also set the password from this tab.



LiteShow Settings window - Diagnostics tab

Blink the LED on the LiteShow module: When you click the Blink LED button on the Diagnostics tab, the two green LEDs on one side of the LiteShow adapter blink. This lets you know that there is communication between the LiteShow adapter and your computer's wireless adapter or USB wireless adapter.

Troubleshooting and Frequently Asked Questions

Troubleshooting

LiteShow Manager doesn't see the projector. Try the following:

- Make sure that the LiteShow-enabled projector is in range with your computer and that the projector is powered-on.
- Click the Scan button.
- Make sure that the wireless adapter is installed, plugged in, and enabled on your computer.
- Make sure that the wireless adapter's antenna is switched on or extended.
- Make sure that the wireless adapter is configured to match the settings that display on the LiteShow splash screen. For more detailed information, visit the InFocus website at <http://www.infocus.com/service>.

Performance is poor; projection take a long time. Try the following:

- Physically move the computer so that it is closer to the LiteShow adapter.
- Check to see that there are no 802.11 or 2.4 GHz devices, such as Bluetooth wireless devices, in the area of the computer and LiteShow adapter.
- Move the slider in the Preferences box to **Better Performance**.

Frequently Asked Questions

The following are questions that you may have about the LiteShow system and its individual parts.

Q: I received a message telling me that no wireless adapter or USB wireless adapter with OID support was found. What should I do?

A: No matter how new a computer and wireless adapter or USB wireless adapter are, they may need new drivers. It is recommended that you go to your computer's and wireless adapter's or USB wireless adapter's websites and see if newer drivers exist. If so, consider downloading and installing them. If newer drivers aren't available, contact your equipments' technical support areas and inquire about updated drivers that support OIDs. It's very likely that if you did not purchase your wireless device bundled as part of your LiteShow package, it will need its drivers updated.

Q: When projecting, I switched the computer's screen area to 640x480 pixels and the projected image shrank to 50% height but stayed at 100% width. What's wrong?

A: Unfortunately, 640x480 pixels is not a supported mode. Make sure that you are projecting from modes that are 800x600 or higher.

Q: Why does my computer or my desktop icons flicker, or my task bar go blank when I click the Project button?

A: It is likely that your computer is switching resolutions.

u. If you are unsure how to change the projector's mode, consult the User's Guide that came with it

Q: Why does my animated cursor not animate on the LiteShow-enabled projection?

A: Some cursors do not "animate" in the projected image. This can be the nature of animated cursors in wireless projection as it displays the desktop to the projected screen. Animated cursors are not recommended for use in LiteShow projections.

Q: Is it okay to remove the plastic top from the LiteShow adapter?

A: Unless directed to remove it by InFocus technical service personnel, leave the plastic top on the LiteShow adapter at all times.

Q: What does the star (or asterisk *) mean on the Splash Screen?

A: Should you see a star (or asterisk *) in the LiteShow Splash Screen, it indicates that USB services are not available on the projector. Contact InFocus Technical Support (see "If you need assistance" on page 5) to resolve this problem.

Q: How do I restore the LiteShow adapter's defaults to what they were when I received it?

A: You should only reset the LiteShow settings on the advice of InFocus technical support personnel. InFocus Technical Support contact information can be found in "If you need assistance" on page 5.

Glossary

802.11: IEEE 802.11 specifications are wireless standards that specify an over-the-air interface between a wireless client and a base station or between two wireless clients, such as the LiteShow adapter and a computer's wireless adapter or USB wireless adapter.

Access point: A base station in a wireless LAN. LiteShow does not require an access point.

Ad-hoc Mode: Ad-hoc mode, also known as "peer-to-peer" mode, allows wireless devices to communicate with each other directly and without the need of an access point. This is an Independent BSS (IBSS).

BSS: In 802.11 systems, each access point and each wireless device are known as a Basic Service Set (BSS).

Encryption: The process of encoding data so that it is inaccessible during transmission.

Firmware: A type of memory chip that retains its content without electrical power.

IBSS: In ad hoc mode wireless devices can communicate with each other directly and do not use an access point. This is known as an Independent Basic Service Set (IBSS).

DHCP: Also known as Dynamic Host Configuration Protocol software. DHCP automatically assigns IP addresses to client stations logging onto a TCP/IP network. It eliminates the need to manually assign permanent IP addresses.

IEEE: Institute of Electrical and Electronics Engineers, New York, (www.ieee.org)

IP Address: The address of a computer attached to a TCP/IP network. Every client and server station must have a unique IP address. It can be provided by the user, network administrator, or obtained automatically.

LAN: Local Area Network. A computer network that exists over a small area. LANs are generally found in a single building or group of buildings. LANs can be connected to other LANs over any distance by telephone lines and radio waves. A system of LANs connected in this way is called a wide-area network (WAN).

USB wireless adapter: a wireless device that attaches to a PC computer through a USB port.

Wi-Fi: Short for wireless fidelity. The term is commonly used when referring to any type of 802.11 network.

Wireless Adapter: a wireless PCMCIA card, integrated adapter, or USB wireless adapter that inserts into a PC laptop computer.

WLAN: A wireless LAN that transmits over the air, typically in an unlicensed frequency such as the 2.4GHz band.

Appendix

Specifications

Temperature

Operating	50 to 104° F (10 to 40° C) at sea level 50 to 95° F (10 to 35° C) at 10,000 feet
Non-operating	-4 to 158° F (-20 to 70° C)

Altitude

Operating	0 to 10,000 feet (~ 3,000m)
Non-operating	0 to 20,000 feet (~6,000m)

Humidity

10% to 95% relative humidity, non-condensing
50 to 104° F (10 to 40° C)

Dimensions

.83 in x 2.56 in x 3.66 in (21mm x 65mm x
93mm)

Weight

6.17 oz (175g)

Port

MI-D

Range

Up to 300 ft (100m)

Data Rate

11Mbps

Input5V DC @ 750mA

Accessories

The LiteShow system comes with the following accessories, except where noted:

LiteShow adapter	591-0260-01
Wireless adapter *	412-0003-xx
Protective sleeve	110-0682-xx
User's Guide	010-0449-xx
Quick Start Guide	009-0801-xx
LiteShow CD	010-0446-xx

* when purchased with the LiteShow system with a bundled wireless adapter from 3COM.

Compatible projectors

The following table contains projector models that have been tested and are known to be compatible with the LiteShow wireless projection system.

InFocus	Proxima	ASK
LP70	DPI000x	C200
LP120	DPI200x	M1
LP130	DP6500x	M2
LP335		
LP340		
LP350		
LP500		
LP530		
LP650		
LP925		
LP930		

Numerics

24-bit color depth 3

802.11 25

802.11b 2

A

Access point 25

accessories 28

Ad-hoc Mode 25

animated cursor 22

assistance 5

Available projector 12

B

Blink the LED 19

C

Channel 16

compatible projectors 29

Contents 4

D

data rate 3

Diagnostics tab 19

 Blink the LED 19

documentation 5

E

e-mail 5

Enable encryption 15

encryption 25

F

Favorites 12, 15

firmware 25

I

icons flicker 22

IEEE 25

image shrank 22

IP Address 16, 25

L

LAN 25

list window 12

- Available 12

- ID Number 12

- In Use 12

- Projector 12

- Status 12

- Unknown 12

LiteShow adapter 7

- features 7

- tips 8

LiteShow doesn't see the projector 21

LiteShow Manager 3, 11

- list window 12

LiteShow Splash Screen 9

IP 9

Model 9

Name 9

Unique ID 9

Version 9

WLAN 9

LiteShow-compatible projectors 29

M

M1 connector 3, 9

MAC address 17

N

Network Name 16

O

Obtain the IP automatically 16

OID support 22

Optional accessories 29

P

password 17

Performance issues 21

Performance Setting 14

Preferences box 14

Project button 12

Projector Name 16

Q

Quick Start Guide 1

R

range 3

register your LiteShow 2

S

Scan button 13

Set Password 17

Settings button 13

Settings tab 16

 Channel 16

 IP Address 16

 MAC address 17

 Network Name 16

 Projector Name 16

Settings window 15

 Diagnostics 15

 Settings 15

Show Favorites 15

Specifications 27

static IP address 15

Stop button 12

T

Technical Support

 in Europe 5

 in USA 5

Troubleshooting 21

W

website 5

WEP 25

Wi-Fi 25

Wireless Adapter 26

WLAN 26

X

XGA 3

One-Year Warranty

Limited Warranty

Subject to the Limitations, Exclusions and Disclaimers hereof, InFocus Corporation ("InFocus") warrants that the Projector, Lamps and Accessories (hereinafter collectively or individually referred to as "Product" as appropriate) purchased from InFocus, an InFocus distributor, or an InFocus reseller will conform to InFocus' specifications and be free from defects in material or workmanship for the respective Limited Warranty period provided below. InFocus does not warrant that the Product will meet the specific requirements of the end-user customer.

If the Product, while subject to this Limited Warranty, is defective in material or workmanship during the warranty period, then InFocus, at its option, will REPAIR or REPLACE the Product.

All exchanged parts and Products replaced under this Limited Warranty will become property of InFocus. InFocus' sole obligation is to supply (or pay for) all labor necessary to repair the Product found to be defective within the Limited Warranty period and to repair or replace defective parts with new parts or, at the option of InFocus, serviceable used parts that are equivalent or superior to new parts performance. Limited Warranty periods are as follows:

- **Projector Product Limited Warranty Period (Excluding Lamps):** one (1) year from date of purchase.
- **Lamp Product Limited Warranty Periods:** From the date of Projector Product purchase, the original installed lamp shall have a 90-day or 500 hours usage Limited Warranty Period, whichever comes first, and replacement Lamps purchased at the time of Projector Product purchase will have a 90-day or 500 hours usage Limited Warranty period, whichever comes first.
- **LiteShow Wireless Products: One (1) year from date of purchase.**
- **Accessory Product Limited Warranty Period:** one (1) year from date of purchase.

WARRANTY LIMITATION AND EXCLUSION

THIS WARRANTY SETS FORTH INFOCUS' MAXIMUM LIABILITY FOR ITS PRODUCT. THIS WARRANTY EXTENDS ONLY TO PRODUCTS PURCHASED FROM INFOCUS OR AN INFOCUS AUTHORIZED RESELLER. InFocus shall have no further obligation under the foregoing Limited Warranty if the Product has been damaged due to abuse, misuse, neglect, smoke exposure (cigarette or otherwise), accident, unusual physical or electrical stress,

unauthorized modifications (including use of an unauthorized mount), tampering, alterations, or service other than by InFocus or its authorized agents, causes other than from ordinary use or failure to properly use the Product in the application for which said Product was intended.

This Limited Warranty excludes Product cleaning, repair, or replacement of plastics due to cosmetic damage and damage as a result of normal wear. Product repair outside of the terms of the Limited Warranty will be on a time and materials basis. Prolonged Product "demonstration" causes unusual Product wear and is not considered normal use under the terms of this Limited Warranty.

The Accessory Product Limited Warranty covers the accessory item only and excludes normal wear. The Lamp Product Limited Warranty excludes expected lamp degradation.

Remanufactured Products and Software Products are exempt from the foregoing Limited Warranty. Please refer to the appropriate Remanufactured Product Limited Warranty or Software Product Limited Warranty for applicable Warranty information.

DISCLAIMER OF UNSTATED WARRANTIES

THE WARRANTY PRINTED ABOVE IS THE ONLY WARRANTY APPLICABLE TO THIS PRODUCT. ALL OTHER WARRANTIES, EXPRESS OR IMPLIED, INCLUDING, BUT NOT LIMITED TO, THE IMPLIED WARRANTIES OF MERCHANTABILITY AND FITNESS FOR PARTICULAR PURPOSE ARE DISCLAIMED. THERE ARE NO WARRANTIES THAT EXTEND BEYOND THE DESCRIPTION ON THE FACE HEREOF AND THE FOREGOING WARRANTY SHALL NOT BE EXTENDED, ALTERED OR VARIED EXCEPT BY WRITTEN INSTRUMENT SIGNED BY INFOCUS. SOME JURISDICTIONS DO NOT ALLOW LIMITATIONS ON HOW LONG AN IMPLIED WARRANTY MAY LAST, SO SUCH LIMITATIONS MAY NOT APPLY TO YOU.

Limited Warranty Period

The Limited Warranty periods hereof commence on the date of purchase by the end-user customer. These Limited Warranty provisions shall apply only to the end-user purchaser (first person or entity that purchased a new Product for personal or business use and not for the purpose of distribution or resale). SOME JURISDICTIONS MAY GRANT

YOU CONSUMER RIGHTS WITH MINIMUM WARRANTY DURATION THAT DIFFER FROM THE DURATIONS PROVIDED HEREIN, AND INFOCUS WILL HONOR ALL SUCH CONSUMER RIGHTS.

To Be Eligible For Limited Warranty Coverage

Any person exercising a claim under this Limited Warranty must establish to the satisfaction of InFocus both the date of purchase and that the Product was purchased new. The sales receipt or invoice, showing the date of purchase of the Product is the proof of the date of purchase.

To Obtain Warranty Service

During the Limited Warranty period, to exercise this Limited Warranty, the purchaser must first contact 1) InFocus, 2) a service facility authorized by InFocus or 3) the place of original purchase.

InFocus Customer Service - 1-800-799-9911 or techsupport@infocus.com

For Warranty service, the purchaser will be advised to return or deliver the defective Product freight and all fees pre-paid, to an InFocus Service Center or to a service facility authorized by InFocus. When returning Product to InFocus, a Return Material Authorization Number (RMA #) is required and must be clearly displayed on the outside of the shipping carton or a similar package affording an equal degree of protection. InFocus or the service facility authorized by InFocus will return the repaired/replaced Product freight prepaid to the purchaser.

Products returned for Warranty service must be accompanied by a written letter that: (i) explains the problem; (ii) provides proof of date of purchase; (iii) provides the dealer's name; and (iv) provides the model and serial number of the Product. Upon request of InFocus Corporation or an authorized repair center for InFocus, proof of legal import must accompany the warranty repair Product, otherwise the Product must be returned to the place of original purchase, to the manufacturer (Purchaser must bear all tax, duty and freight), or the Purchaser must bear charges for the warranty repair.

No repair or replacement of Product or part thereof shall extend the Limited Warranty period as to the entire Product. Warranty on the repair part and workmanship shall only be effective for a period of ninety (90) days following the repair or replacement of that part or the remaining period of the Product Limited Warranty whichever is greater.

LIMITATION OF LIABILITY

IT IS UNDERSTOOD AND AGREED THAT INFOCUS' LIABILITY WHETHER IN CONTRACT, IN TORT, UNDER ANY WARRANTY, IN NEGLIGENCE OR OTHERWISE SHALL NOT EXCEED THE RETURN OF THE AMOUNT OF THE PURCHASE PRICE PAID BY PURCHASER AND UNDER NO CIRCUMSTANCES SHALL INFOCUS BE LIABLE FOR SPECIAL, INDIRECT, INCIDENTAL OR CONSEQUENTIAL DAMAGES OR LOST PROFITS, LOST REVENUES OR LOST SAVINGS. THE PRICE STATED FOR THE PRODUCTS IS A CONSIDERATION IN LIMITING INFOCUS' LIABILITY.

Limitation on Bringing Action - No action, regardless of form, arising out of the agreement to purchase the Product may be brought by purchaser more than one year after the cause of action has accrued.

Governing Law - Any action, regardless of form, arising out of the agreement to purchase the Product is governed by Oregon law.

Mandatory Arbitration - Any action, regardless of form, arising out of the agreement to purchase the Product is subject to mandatory arbitration.

SOME JURISDICTIONS DO NOT ALLOW THE EXCLUSION OR LIMITATION OF INCIDENTAL OR CONSEQUENTIAL DAMAGES SO THE ABOVE LIMITATION OR EXCLUSION MAY NOT APPLY TO YOU. THIS LIMITED WARRANTY GIVES YOU SPECIFIC LEGAL RIGHTS, AND YOU MAY ALSO HAVE OTHER RIGHTS, DEPENDING ON JURISDICTION.

LiteShow Wireless Products Software Warranty Statement

You agree that this SOFTWARE PRODUCT is provided by InFocus "AS IS" without any warranty of any kind. InFocus has no responsibility or liability for any bug or defect fixes or service support. ACCORDINGLY, TO THE MAXIMUM EXTENT PERMITTED BY APPLICABLE LAW NO WARRANTIES ARE PROVIDED BY INFOCUS, AND INFOCUS AND ITS SUPPLIERS DISCLAIM ALL WARRANTIES AND CONDITIONS, EITHER EXPRESS, IMPLIED OR STATUTORY,

INCLUDING, BUT NOT LIMITED TO, IMPLIED WARRANTIES OF MERCHANTABILITY, FITNESS FOR A PARTICULAR PURPOSE, TITLE, AND NON-INFRINGEMENT, WITH REGARD TO THE SOFTWARE PRODUCT AND THE PROVISION OF OR FAILURE TO PROVIDE SUPPORT

SERVICES. THIS LIMITED WARRANTY GIVES YOU SPECIFIC LEGAL RIGHTS. YOU MAY HAVE OTHERS, WHICH VARY FROM STATE/JURISDICTION TO STATE JURISDICTION. To the extent implied warranties may not be entirely disclaimed but implied warranty limitations are

allowed by applicable law, implied warranties on the SOFTWARE PRODUCT, if any, are limited to ninety (90) days.

LIMITED WARRANTY ON MEDIA

Notwithstanding the foregoing, InFocus warrants the media on which the InFocus Software is recorded and delivered by InFocus to be free from defects in materials and workmanship under normal use for a period of ninety (90) days from the date of original purchase. Your exclusive remedy under this Section shall be, at InFocus's option, a refund of the purchase price of the product containing the InFocus Software or replacement of the InFocus Software which is returned to InFocus or an InFocus authorized representative with a copy of the receipt. THIS LIMITED WARRANTY AND ANY IMPLIED WARRANTIES ON THE MEDIA INCLUDING, BUT NOT LIMITED TO, THE IMPLIED WARRANTIES OF MERCHANTABILITY, OF SATISFACTORY QUALITY, AND OF FITNESS FOR A PARTICULAR PURPOSE, ARE LIMITED IN DURATION TO NINETY (90) DAYS FROM THE DATE OF

ORIGINAL PURCHASE. THE LIMITED WARRANTY SET FORTH HEREIN IS THE ONLY WARRANTY MADE TO YOU AND IS PROVIDED IN LIEU OF ANY OTHER WARRANTIES

(IF ANY) CREATED BY ANY DOCUMENTATION OR PACKAGING. THIS LIMITED WARRANTY GIVES YOU SPECIFIC LEGAL RIGHTS, AND YOU MAY ALSO HAVE OTHER RIGHTS WHICH VARY BY JURISDICTION. LIMITATION OF LIABILITY. TO THE MAXIMUM EXTENT

PERMITTED BY APPLICABLE LAW, IN NO EVENT SHALL INFOCUS OR ITS SUPPLIERS BE LIABLE FOR ANY SPECIAL, INCIDENTAL, INDIRECT, OR CONSEQUENTIAL

DAMAGES WHATSOEVER (INCLUDING, WITHOUT LIMITATION, DAMAGES FOR LOSS OF BUSINESS PROFITS, BUSINESS INTERRUPTION, COMPUTER INTERRUPTION, LOSS OF BUSINESS INFORMATION, OR ANY OTHER PECUNIARY LOSS) ARISING OUT OF THE USE OF OR INABILITY TO USE THE SOFTWARE PRODUCT OR THE PROVISION OF OR FAILURE TO PROVIDE SUPPORT SERVICES, EVEN IF INFOCUS HAS BEEN ADVISED OF THE

POSSIBILITY OF SUCH DAMAGES. BECAUSE SOME STATES AND JURISDICTIONS DO NOT ALLOW THE EXCLUSION OR LIMITATION OF LIABILITY, THE ABOVE

LIMITATION MAY NOT APPLY TO YOU.

LiteShow® WIRELESS FREEDOM FOR YOUR PROJECTOR.

USER'S GUIDE



InFocus®

InFocus Corporation

27700B SW Parkway Avenue
Wilsonville, Oregon 97070-9215
1-800-294-6400 • 503-685-8888
Fax: 503-685-8887
<http://www.infocus.com>

In Europe:

InFocus International BV
Strawinskylaan 585
1077 XX Amsterdam
The Netherlands
Phone: +31 20 579 2000
Fax: +31 20 579 2999

In Asia:

238A Thomson Road
#18-01/04 Novena Square
Singapore 307684
Telephone: (65) 6334-9005
Fax: (65) 6333-4525



010-0449-00

Free Manuals Download Website

<http://myh66.com>

<http://usermanuals.us>

<http://www.somanuals.com>

<http://www.4manuals.cc>

<http://www.manual-lib.com>

<http://www.404manual.com>

<http://www.luxmanual.com>

<http://aubethermostatmanual.com>

Golf course search by state

<http://golfingnear.com>

Email search by domain

<http://emailbydomain.com>

Auto manuals search

<http://auto.somanuals.com>

TV manuals search

<http://tv.somanuals.com>