



No-Frost

Owner's manual

Dear Indesit Customer,

We wish you all the best with your new refrigerator manufactured in our modern plants and gone through meticulous quality controls, as we also recommend you to read this owner's manual which is prepared to assist you in using your refrigerator in most efficient manner.



C O N T E N T S

Information on No-frost technology / 2

Installation and safety instructions / 3-4

Technical features / 5

Operating your refrigerator / 6 - 7

Operational warnings / 7

Suggestions on food storage / 8 - 12

Changing the door opening direction / 9

Maintenance and Cleaning / 12

Vacation time / 13

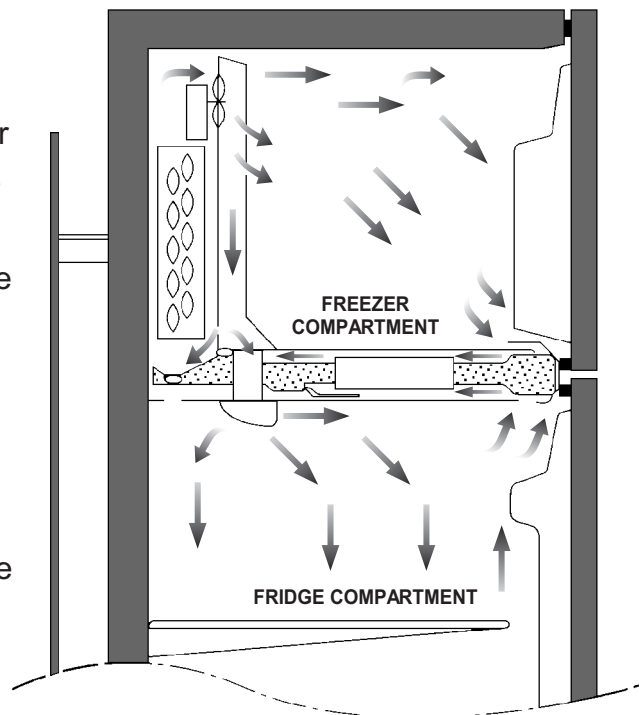
Before calling for service / 14

Information on No-frost technology

All traditional refrigerators that are not equipped with No-frost technology have to be stopped for a certain period in order to defrost the snow and ice formation inside the freezer compartment. However, removing the foods that have to be kept cool, wiping up the defrosted and water spilled at that time generally turns into troubles. Additionally, icing inside the freezer adversely affects the cooling performance of the appliance.

Now, refrigerators manufactured under the No-frost technology present a definite solution against these problems. The air inside the refrigerator is permanently recirculated by a fan as it leaves behind its moist and heat, thanks to the evaporator fitted behind the deep freeze compartment.

cooling and freezing compartments from many points, forming a homogeneous distribution and is circulated as well. Thus, snow and ice formation is avoided in No-frost refrigerators, while they remain dry and cool even during the hottest summer days.



Installation and safety instructions

Read this manual carefully.

Read the safety warnings and operational instructions carefully prior to operating your refrigerator.

Always keep this manual ready.

Always keep this manual ready to use as a quick reference in case of possible troubles that may arise during the operation of your refrigerator.

Obey the warnings.

Obey all the warnings on the refrigerator and within the operational instructions.

Follow the instructions.

All instructions that are mentioned in the Owner's Manual shall be followed and applied during operating and using the appliance.

Carry out the procedures listed below, after unpacking the refrigerator. Call the **Indesit**

Authorized Service in case of any possible problem that you may face.

- 1.** Install all shelves and accessories in their proper places, since they are packed together to prevent possible damage during transportation.
- 2.** Dust may accumulate on your refrigerator and its accessories during packing and transportation. First, clean the interior and accessories of your refrigerator with a baking soda solution and lukewarm water. (One tea-spoon baking soda for a bucket lukewarm water). Then rinse with clean water and dry.
- 3.** The lamps provided for the fridge compartment must light whenever the door of the refrigerator is opened.
- 4.** Turn the freezer compartment button to **"MAX"** position and allow the refrigerator to operate unloaded for a few hours. The

fridge and freezer compartments will be cooled during this period.

- 5.** Prior to use, let the refrigerator run for a few hours; then place the food.
- 6.** Avoid placing the refrigerator near heat sources and direct sunlight. Heat may adversely effect the plastic and electrical components of your refrigerator. Therefore, never place the appliance in the vicinity of heat sources like stoves, radiator etc. Nor expose it to direct sunlight.
- 7. Position the appliance in such a way that you can access the socket where it is plugged in.**

8. When placing your refrigerator, allow at least a 5 cm clearance on the sides and 2 cm from the back-side wall. In case the appliance is going to be placed in a recessed area, allow at least a 25 cm clearance above it.

9. For your own safety, use grounded plug in operating the appliance. Consult a qualified electrician if the plug is not grounded or if the socket does not fit your household electrical installation. **The manufacturer is free of any responsibility due to any damage or loss resulting from ungrounded operation.**

10. Ensure that the power supply voltage complies with the figures stated on the tag inside the fridge compartment. The operational voltage of your refrigerator is 10 Amperes. Connect the power cord to a grounded plug bearing a current rate of 10 Amperes.

11. At the end of the functional life of your appliance containing cyclopentane gas in the insulation foam and perhaps gas R600a (isobutane) in the refrigeration circuit the latter should be made safe before being sent to the dump.

For this operation, please contact your dealer or the Local Organisation in charge of waste disposal.

Adjusting the refrigerator feet

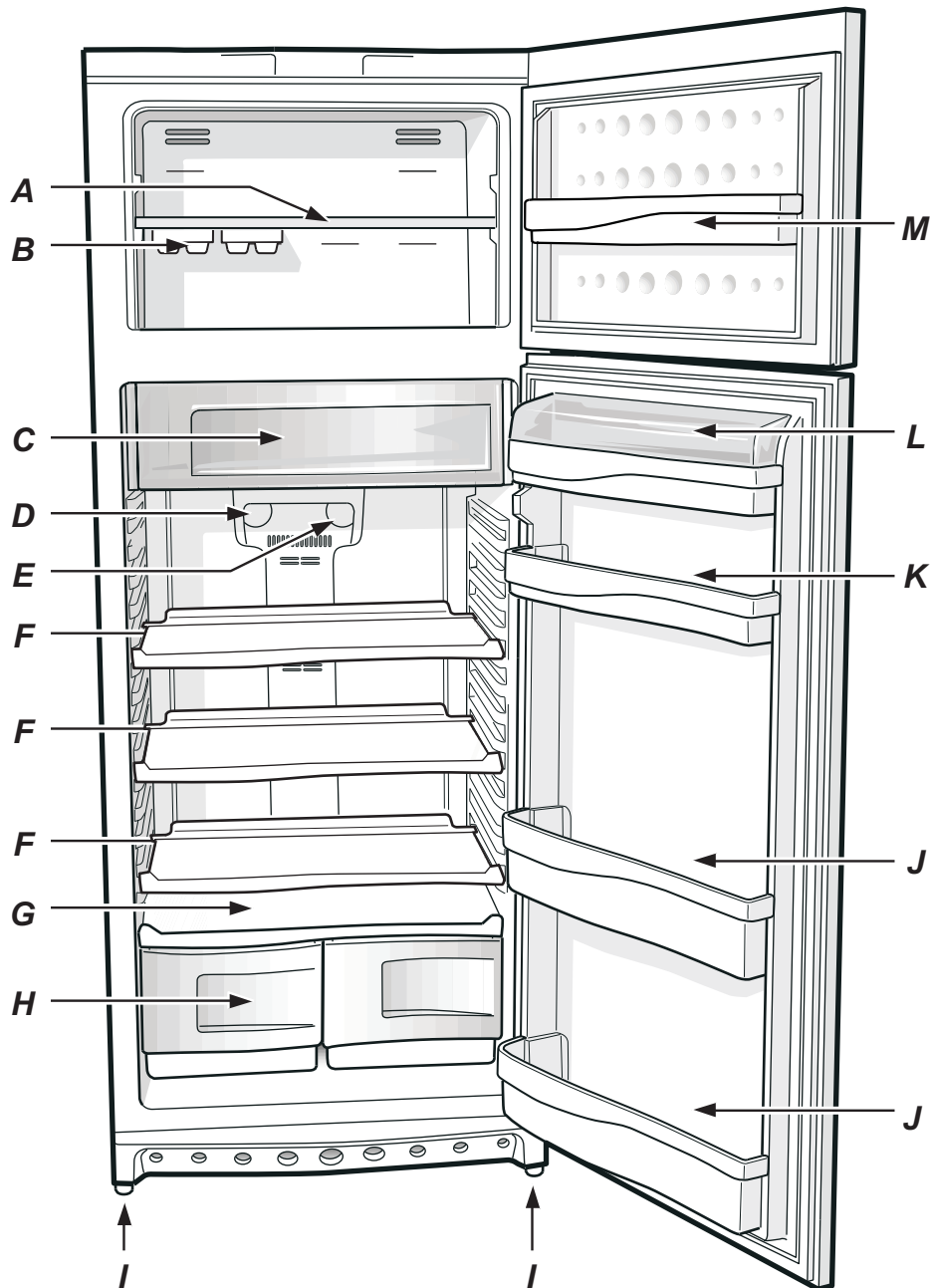
Your refrigerator is equipped with 2 wheels that provide great ease in placing, moving and cleaning the appliance.

You can easily block the front wheels by turning the feet in front of them to the left, in order to prevent any undesired movement of the refrigerator. Thus, back and forth movement during opening or closing the door is avoided and a more level placement is achieved.

You can unlock the front wheels by turning the feet in front of them to the right, in order to clean or move your refrigerator.

Technical Features

R 45 NFL (UK)



- | | |
|------------------------------------------------------------|-----------------------------------------------|
| A - Freezer shelf | F - Fridge shelf |
| B - Ice tray | G - Fruit/vegetable drawer cover |
| C - Compartment "Chiller" for meat and fish | H - Fruit/vegetable drawer |
| D - Fridge compartment temperature adjustment knob | I - Adjustable feet |
| E - Freezer compartment temperature adjustment knob | J - Door shelf for bottles |
| | K - Door shelf for small food products |
| | L - Door shelf cover |
| | M - Freezer door shelf |

Operating your refrigerator

Coldness adjustment

Your refrigerator consists of two compartments. The first compartment is the **freezer**, and the second one is the **fridge** or **fresh food storage compartment**. Compartment temperatures can be adjusted via thermostats concerned.

Turn the thermostat knobs to their normal (MED) position. Turn the knobs as required if the compartment temperatures are too high or too low.

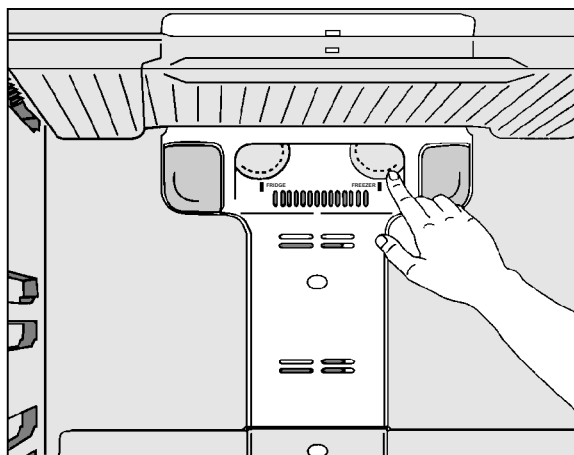
Temperature knob for the freezer compartment:

MED-MAX (High): Is used to freezer foods quickly and to obtain ice immediately.

MED (Medium): Is used for normal use and to store frozen foods for long periods.

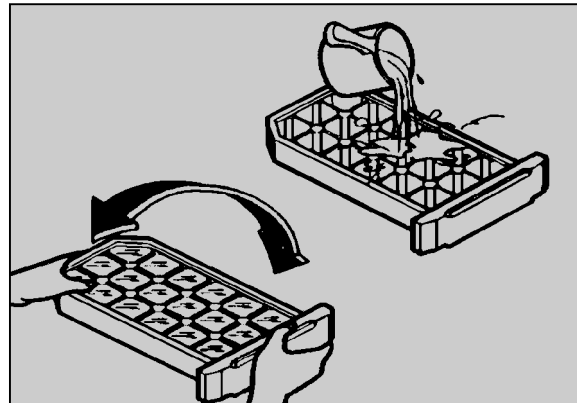
MIN-MED (Low): Is used only to keep ice cubes frozen and to save energy.

During hot seasons, when the **"freezer"** knob is turned to **"MAX"** position, your fridge will operate for elongated period. The thermostat position should be brought to its initial position when the freezer compartment is cooled sufficiently.



Ice Making

To make ice cubes, fill the ice trays with water and place them in the freezer. To remove the ice cubes first run water on the tray, then hold from both sides and twist gently. Hence, ice cubes will be poured into the container.

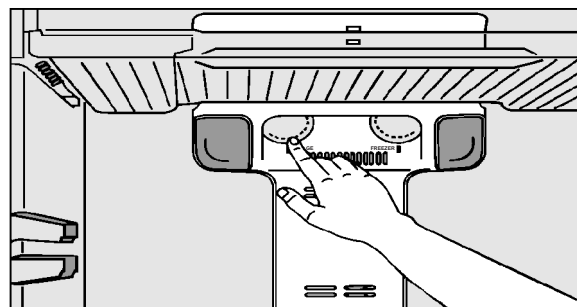


Temperature knob for fridge compartment (fridge knob):

MED-MAX (High) : is used to increase the cooling rate.

MED (Medium) : is used for normal operation.

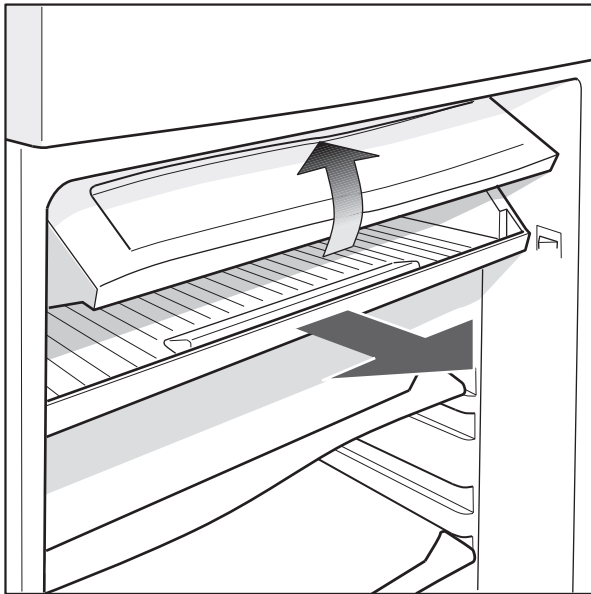
MIN-MED (Low) : is used to decrease the cooling rate



Chiller compartment

This compartment is used to thaw frozen foods (meat, fish chicken, etc.) and to store foods without freezing for short periods. The temperature inside the compartment is about 0 ° C.

The lid of the chiller compartment opens automatically when you pull the compartment towards yourself.



Operational warning

- 1.** Avoid spilling water (or any liquid) to the back side of the appliance.
- 2.** Do not leave the door of the refrigerator open for extended periods. This will decrease the cooling efficiency and will increase power consumption.
- 3.** Do not store inflammable materials, explosives or chemicals and deodorants and cosmetic products in which propellant gases are used, in the refrigerator.
- 4.** Do not allow children to hang on the refrigerator door. Do not leave children in the vicinity of an operating refrigerator.
- 5.** Do not continue to operate the appliance if no proper operation is obtained or if a trouble occurs. Immediately unplug the appliance and call for the Authorized Service.

Storage of foods

Suggestions to store foods in the **fridge**:

Food	Period of storage	Store at the fridge compartment at
Wrapped meat and fish (wrap it with plastic folio or place in plastic bags)	2 or 3 days	In the chiller box (the coldest part)
Fresh cheese	3 or 4 days	In the chiller box (the coldest part)
Eggs	1 month	In the egg storage rack
Butter, margarine	1 week	In the fridge door rack
Cooked foods		
(Store in the fridge compartment after placing in an airtight container with a lid) Sausage, salami, sandwich Meat, cakes, creams, pudding, chocolate, tomatoes, bread, pastry...	3 to 4 days	In any rack
Bottled products, milk, yoghurt		In the special door rack
Fruits and vegetables	3 to 7 days	In the vegetable drawer

Note: Potatoes, garlic and onions should not be stored in the fridge.

Tips for storing foods in the refrigerator:

- Never place hot food in your refrigerator. Allow hot food to cool down to room temperature.
- Store vegetables and fruits in the vegetable drawer at the bottom of the fridge compartment.
- Store foods with strong odors (melon, strawberry, fish, etc.) in containers with a lid.

Freezer compartment:

It is possible to maintain the freshness and flavor of foods if they are stored in accordance with the following instructions.

- Place the foods you want to freeze on the shelf and then place them on the surface of the freezer or in the door rack.
- Do not place the foods you want

to freeze near the foods already frozen.

- Do not place unwrapped, open foods in the freezer compartment.
- Do not store bottles in the freezer compartment; they may break when frozen.
- It is recommended to store big amounts of food in the form of single use portions. Do not refreeze the food that has been thawed. This causes loss of taste and nutrition.

Changing the door opening direction

It is possible to change the opening direction of the door according to the location of the appliance. You should let this procedure carried out by **INDESIT Authorized Service.**

Suggestions on food storage in the **freezer** compartment:

Fish and meat

Foods	Packing	Softening (Days)	Storage (Months)	Thawing duration
Beef - steak	Folio	2/3	9/10	Not required
Mutton	Folio	1/2	6	Not required
Pork roast	Folio	1	6	Not required
Veal roast	Folio	1	8	Not required
Pork / veal meat	Every piece should be wrapped with oil-paper and then put into folio (4 or 6 slices)		6	Not required
Pork / veal cutlet	Every piece should be wrapped with oil-paper and then put into folio (4 or 6 slices)		6	Not required
mincet meat	In aluminum containers as wrapped with oil-paper	As fresh	2	Slowly in the refrigerator
Heart and liver	Plastic bag		3	Not required
Salami / sausage	Oil - paper or folio		2	Not required
Chicken and turkey	Folio	1/3	9	Slowly in the refrigerator
Duck and goose	Folio	1/4	6	Slowly in the refrigerator
Pheasant, partridge and wild duck	Folio	1/3	9	Slowly in the refrigerator
Wild / domestic rabbit	Folio	3/4	6	Slowly in the refrigerator
Venison	Folio or oil - paper	5/6	9	Slowly in the refrigerator
Big fish	Folio or oil - paper		4/6	Slowly in the refrigerator
Small fish	Plastic bag		2/3	Not required
Shell fish	Plastic bag		3/6	Not required
Snail, etc.	In saline water in aluminum or plastic container		3	Slowly in the refrigerator
Boiled fish	Folio or oil - paper		12	In warm water
Fried fish	Plastic bag		4/6	Directly in the pan

Fruits and vegetables

Foods	Preparation	Holding Period (hours)	Packing	Storage (Months)	Thawing Period
Apple and pear	Slice after peeling	2	In containers (in syrup)	12	Slowly in the refrigerator
Apricot, peach, cherry and plum	Peel and remove seed	1/2	In containers (in syrup)	12	Slowly in the refrigerator
Strawberry, and raspberry	Wash and rinse		In containers (add sugar)	10/12	Slowly in the refrigerator
Cooked fruits	Cut, cook and compress		In containers (add %10 sugar)	12	Slowly in the refrigerator
Fruit juice	Wash, cut and mash		In containers (add sugar)	10/12	Slowly in the refrigerator
Cauliflower	Remove leaves, put core into pieces and hold in sour water	2	Plastic bag	12	Not required
Cabbage and Brussels sprout	Wash and cut into small pieces	1/2	Plastic bag	10/12	Room temperature
Green peas	Remove and wash	2	Plastic bag	12	Not required
French beans	Wash, slice if required	3/4	Plastic bag	10/12	Not required
Mushrooms and asparagus	Wash, peel and cut	3/4	Plastic bag or container	6	Room temperature
Carrots, peppers and radish	Peel, wash and slice if required	3/4	Plastic bag	12	Not required
Spinach	Wash and cut in small pieces	2	Plastic bag	12	Room temperature
Vegetables for soups	Wash and cut in small pieces	3	Plastic bag or container	6/7	Not required

Food	Preparation	Holding period (hours)	Packing	Storage (Months)	Thawing period
Bread			Plastic bag	4	Room temperature or oven
Cakes			Plastic bag		Wait 10 minutes then heat up to 100 / 200 °C
Cream			Plastic bag	6	Room temperature or in refrigerator
Butter			Own package or folio	6	In the refrigerator
Boiled food or vegetable			Plastic or glass container	3/6	Room temperature or in hot water
Eggs			Peel, freeze in small containers	10	Room temperature or in refrigerator

Maintenance and cleaning

Cleaning

Always remove power cord from the wall outlet prior to cleaning the appliance.

Exterior

Use a soft cloth dampened with liquid detergent or white goods polish to clean the external surface of the appliance and then dry and polish.

Interior

It is recommended to clean the interior, the accessories and seals of the appliance with a solution prepared by adding one

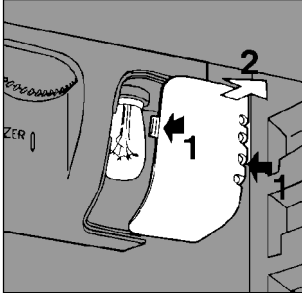
spoonful baking soda in to a liter of water. This solution both cleans your appliance and prevents the formation of undesired odors. After every cleaning cover the magnetic door seals of the appliance with powder.

Note: Never use gasoil, gasoline and similar substances for cleaning purpose.



Lamp Replacement For Fridge

Unplug the power cord from the outlet prior to replacing the lamp. Remove the housing as illustrated in the figure. Remove the lamp and replace with a maximum 15W lamp.



Vacation time

Unplug the appliance after cleaning it and leave the doors OPEN. Leaving the door open after cleaning will avoid the formation of undesired odors.

During transportation;

- Fix all accessories securely at their place. Therefore, package them if necessary.
- Do not transport your refrigerator horizontally, otherwise the compressor will be damaged.

Power failure

You should minimize the number of door openings while the power is off. During power failures of longer duration, place blocks of dry ice in the top compartment.

Before calling for Service

Fridge/freezer does not operate;

- Check if power is being supplied;
- Has a house fuse blown or circuit breaker tripped? Check if the power cord plug been removed or loosened from the wall outlet.
- Check if the thermostat controls (fridge/freezer knob) are set on proper position.

• Insufficient air circulation around the condenser or dust has accumulated on the condenser.

Fridge-freezer is hotter than ever;

- Check if the thermostat controls are set on proper position.
- Check if doors left open for a time.
- Check if large amount of foods that obstruct air circulation are kept in the refrigerator.

Abnormal noise (s);

- Check if refrigerator is installed on rough and smooth place or not.

- Check if either shelves or foods are placed well-balanced.

Compressor does not operate;

- The compressor is loaded excessively. In such cases, unplug the appliance and replug it after 10-15 minutes. Your refrigerator will reoperate.

When Service is required;

If the problems could not be eliminated

by help of the "**Before calling for**

Service" section, apply to the nearest

INDESIT Authorized Dealer. Please

indicate the model and serial number of your appliance during any kind of application and correspondence, concerning the appliance.



Free Manuals Download Website

<http://myh66.com>

<http://usermanuals.us>

<http://www.somanuals.com>

<http://www.4manuals.cc>

<http://www.manual-lib.com>

<http://www.404manual.com>

<http://www.luxmanual.com>

<http://aubethermostatmanual.com>

Golf course search by state

<http://golfingnear.com>

Email search by domain

<http://emailbydomain.com>

Auto manuals search

<http://auto.somanuals.com>

TV manuals search

<http://tv.somanuals.com>