

Two-doors refrigerator-freezer

Instructions for installation and use

TA 5 FNF - TA 5 FNF S



GB **Two-doors refrigerator-freezer**
Instructions for installation and use



To maintain the EFFICIENCY and SAFETY of this appliance, we recommend:

- call only the Service Centers authorized by the manufacturer
- always use original Spare Parts

Safety - a good habit to get into.

ATTENTION

Read your manual carefully since it contains instructions which will ensure safe installation, use and maintenance of your appliance.

Your Refrigerator is built to International safety standards (EN60) and has been awarded the European approval mark (IMQ) for compliance with UK electrical safety requirements. It also meets the EC standards on the prevention and elimination of radio interference (EC directive 87/308 - 02.06.89).

1. This appliance is designed to be used indoors and under no circumstances should it be installed outside even if protected by a roof. Leaving the appliance exposed to the rain and whether is very dangerous.
2. The appliance should be used only by adults and exclusively for storing foodstuffs in compliance with the instructions provided in this manual. Under no circumstances should children be allowed to operate, or tamper with, this product.
3. Do not attempt to operate or handle this appliance when barefoot, or with wet hands or feet.
4. It is highly recommended that you do not operate this appliance by connecting it to the power supply with extensions or multiple socket plugs. If the refrigerator has been installed between two cabinets, make sure that the supply chord is not dangerously crimped or trapped beneath a heavy object.
5. Never pull the cable or the appliance to remove the plug from the socket; this is very dangerous.

6. Do not touch the internal cooling elements, especially if your hands are wet, since you could burn or hurt yourself.

7. Before doing any cleaning, disconnect the appliance from the electricity (by pulling out the plug or turning off the general switch in your home); it is not enough to place the temperature regulation knob on ● to cut off the power.

8. Before disposing of your old appliance, remember to break or remove the lock as a safety measure to protect children who might lock themselves inside the appliance when playing.

9. If your appliance is not operating properly, read the chapter entitled, "Trouble Shooting", which might help you resolve the problem, before calling an after-sales service centre. Do not attempt to repair the appliance by tampering with the internal components.

10. If the power supply cord must be replaced, please contact one of our Customer Service Centers. In some cases, the connections are made using special terminals and in others a special tool must be used to access the connections.

11. Do not use electric appliances inside the compartment for food storage, if these are not those recommended by the manufacturer.

12. At the end of the functional life of your appliance – containing cyclopentane gas in the insulation foam and perhaps gas R600a (isobutane) in the refrigeration circuit – the latter should be made safe before being sent to the dump. For this operation, please contact your dealer or the Local Organisation in charge of waste disposal.

Installation

Proper installation of the appliance is essential to ensure the best and most efficient performance of your appliance.

Ventilation

The compressor and condenser generate heat and, therefore, need to be ventilated properly. Rooms with less than perfect ventilation are not very suited for installation of the appliance. Therefore, it should be installed in a room with an opening (window or French window) that provides the appropriate amount of air re-circulation. It is also important for the room not be too humid.

During installation, make sure not to cover or obstruct the grates that allow for proper ventilation of the appliance.

For proper ventilation of the appliance, you must leave:

- a space of at least 10 cm between the top part and any cabinets above it;
- a space of at least 5 cm between the sides of the appliance and any adjacent cabinets/walls.

To install the appliance between furniture units, please follow the instructions provided on the attached sheet.

Away from Heat

Avoid positioning the appliance in a place where it is directly exposed to sunlight or near an oven, cook top or the like.

Levelling

The floor should be perfectly level; if not, you can adjust the feet at the front of the appliance.

Earthing

Before making the electrical connection, check that the voltage shown on the data plate, that you will find on the bottom left hand side of the appliance next to the crisper, corresponds to that of your home and that the socket is earthed in compliance with all current electrical regulations. If the system is not earthed, the manufacturer declines all liability for consequent damages or losses. Do not use adapters or multiple sockets.

Check the power load

The electrical socket must support the maximum power load of the appliance shown on the data plate (on the bottom left hand side of the appliance next to the crisper).

Before plugging the appliance to the mains

Stand the appliance upright and wait at least 3 hours before plugging the appliance into the mains to ensure proper performance.

Electrical connection

Your appliance is now supplied with a 13 amp fused plug that can be plugged into a 13 amp socket for immediate use. Before using the appliance please read the instructions below.

WARNING - THIS APPLIANCE MUST BE EARTHED. THE FOLLOWING OPERATIONS SHOULD BE CARRIED OUT BY A QUALIFIED ELECTRICIAN.

Replacing the fuse:

When replacing a faulty fuse, a 13 amp ASTA approved fuse to BS 1362 should always be used, and the fuse cover re-fitted. If the fuse cover is lost, the plug must not be used until a replacement is obtained.

Replacement fuse covers:

If a replacement fuse cover is fitted, it must be of the correct colour as indicated by the coloured marking or the colour that is embossed in words on the base of the plug. Replacements can be obtained directly from your nearest Service Depot.

Removing the plug:

If your appliance has a non-rewireable moulded plug and you should wish to remove it to add a cable extension or to re-route the mains cable through partitions, units etc., please ensure that either:

- the plug is replaced by a fused 13 amp re-wireable plug bearing the BSI mark of approval
- or:
- the mains cable is wired directly into a 13 amp cable outlet, controlled by a switch, (in compliance with BS 5733) which is accessible without moving the appliance.


Disposing of the plug:

Ensure that before disposing of the plug itself, you make the pins unusable so that it cannot be accidentally inserted into a socket. **Instructions for connecting cable to an alternative plug:**

Important: the wires in the mains lead are coloured in accordance with the following code:

Green & Yellow	- Earth
Blue	- Neutral
Brown	- Live

As the colours of the wires in the mains lead may not correspond with the coloured markings identifying the terminals in your plug, proceed as follows:

Connect Green & Yellow wire to terminal marked "E" or  or coloured Green or Green & Yellow.

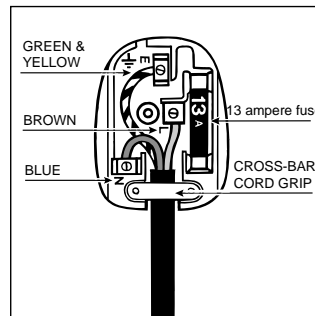
Connect Brown wire to terminal marked "L" or coloured Red.

Connect Blue wire to terminal marked "N" or coloured Black. If a 13 amp plug (BS 1363) is used it must be fitted with a 13 amp fuse. A 15 amp plug must be protected by a 15 amp fuse, either in the plug or adaptor or at the distribution board. If you are in any doubt about the electrical supply to your machine, consult a qualified electrician before use.

How to connect an alternative plug:

The wires in this mains lead are coloured in accordance with the following code:

BLUE	"NEUTRAL" ("N")
BROWN	"LIVE" ("L")
GREEN AND YELLOW	"EARTH" ("E")



Disposing of the appliance:

When disposing of the appliance please remove the plug by cutting the mains cable as close as possible to the plug body and dispose of it as described above.

A closer look

A Red Lamp

Temperature Alarm; when an abnormal temperature is designated within the freezer compartment, red warning lamp lights on

B Green Lamp

When this lamp is lights on, it means that the device is connected to the electrical feeding.

C Yellow Lamp

This lamp is lights on when fast freezing button "E" is pressed.

D Temperature Adjustment Knob of the Freezer Compartment

This knob is used to adjust the temperature of the freezer compartment and to select some functions.

- The refrigerator is off. If the power cord remains connected to the plug, the green lamp "B" remains lighted.

E Fast Freezing Button

Pressing the button enables the freezing of fresh foods (The yellow lamp "C" lights on)

F Display Freezer

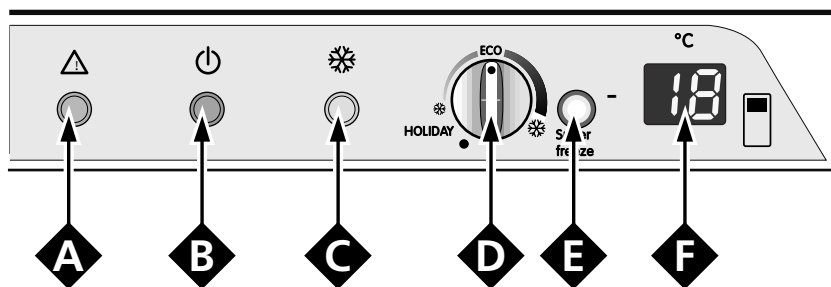
Displays the temperature set in the freezer compartment and the two types of the alarms A1 and A2 of the critical temperature.

HOLIDAY FUNCTION "HOLIDAY"

Mould and bad odours forming inside your unused refrigerator when you go on holiday, need no longer be a problem. Just enable the Holiday function. By turning the freezer compartment temperature adjustment knob on to the symbol, the freezer compartment will continue to operate at a temperature of -18°C. At the same time by turning the fridge compartment temperature adjustment knob onto the same symbol, the fridge compartment will operate at a temperature of ca. +11°C. (You can store your make-up and beauty products in it, for example) .

ECO FUNCTION

Optimum temperature level for lower consumption: Turn also the knob in the fridge compartment on to the ECO function.



G Compartment for storing frozen foods, freezing fresh foods and making ice

H "Cool Box" compartment for meat and fish

I Fridge compartment temperature adjustment knob

J Removable height adjustable shelves

K Fruit and vegetable drawer

L Adjustable feet

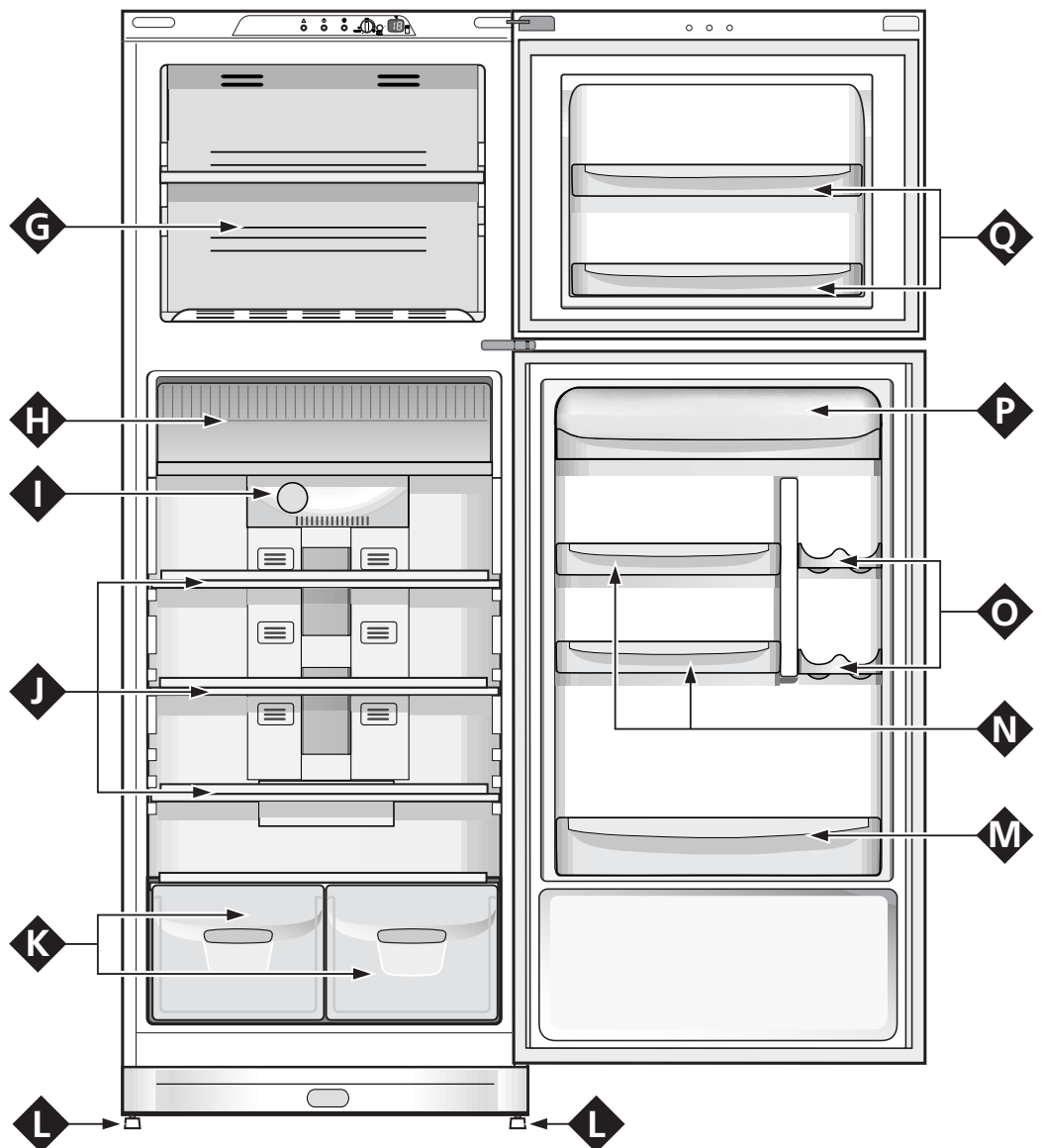
M Removable door shelf for bottles

N Intermediate shelves

O Beverage can shelves

P Removable lidded shelf

Q Freezer door shelves



How to Start the Appliance

NOTICE

After the appliance has been delivered, stand it in the upright position and wait approximately 3 hours before connecting it to the electrical outlet to guarantee that it operates properly.

Before placing foodstuffs in the refrigerator or freezer, clean the interior well with warm water and baking soda.

Motor protection delay

This model is provided with a motor protection control system. Therefore, if the compressor does not start immediately upon installation, do not worry as it will start automatically after approximately 8 minutes.

This is also what will happen every time the power supply is interrupted, both due to a power failure or should you switch it off yourself (to clean or defrost your freezer, for example).

After plugging the appliance into a suitable electricity socket, ensure the green lamp "B" lights on and adjust the desired temperature with the temperature adjustment knob of the freezer compartment. We recommend you enable the **SUPER FREEZE** function to speed up the cooling process of the compartment; when the latter has reached its optimal temperature, the function shall be automatically disabled and you may place your frozen food inside the compartment.

How to use the refrigerator compartment...

The thermostat automatically regulates the temperature inside the appliance

min = less cold **max** = colder

It is recommended that a medium setting be used (**med**).

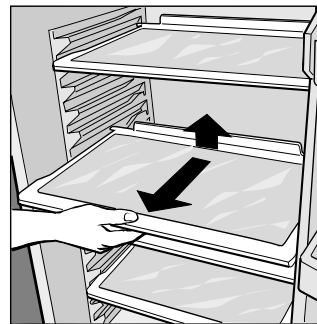
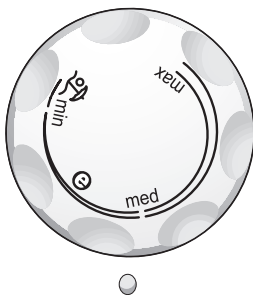


Fig. 1

Using the "Cool Box" compartment for meat and fish

This compartment was designed to allow for longer preservation times for fresh meat and fish (for as long as a week). This is possible as the coldest temperature of the entire fridge is available inside this specific compartment. Moreover, the "Cool Box" compartment can also be used to cool dishes that are normally eaten "cold". The cover of the "Cool Box" is opened towards to the basement of the same compartment (Fig. 2).

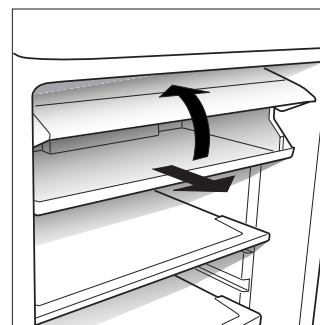


Fig. 2

WARNING: to avoid blocking the air circulation inside the refrigerator, it is advisable not to obstruct the ventilation holes with food or containers.

Please place your foods inside your refrigerator in such a way that the air is freely circulated.

Remember to follow our instructions on the storage life of foods: If not stored properly, even the freshest food will deteriorate quite quickly.

Contrary to popular belief, cooked foods do not keep longer than fresh food.

Remember to cool hot food before storing otherwise the temperature inside the appliance will increase, causing the compressor to work harder and use more energy.

Do not store liquids in unsealed containers since this will increase the humidity and lead to the formation of frost in the refrigerator.

The refrigerator compartment is equipped with practical slide-out shelves (Fig. 1) which can be adjusted for height using the appropriate guides. This feature allows you to store large containers and food products.

The can rack

The can rack (Fig. 3) on the inner door allows you to store not only cans, but also yoghurt, butter and other containers, according to your requirements.

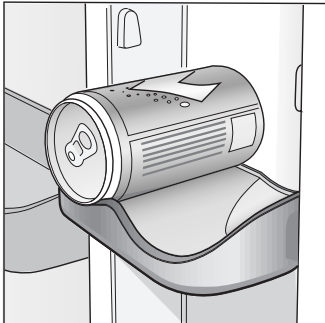


Fig. 3

Freezing Foods Properly

For the preparation of food to be frozen, please consult a specialized manual.

Food that has been thawed, even partially, must not be re-frozen: you must cook it in order to consume it (within 24 hours) or to freeze it once again.

When freezing fresh foods, remember that they should not touch other previously frozen or deep frozen foods.

The first time or after the freezer has been inactive, you can only freeze food after having let the appliance function at maximum.

Freezing can be done in two ways:

- 24 HOURS FAST FREEZING

For small quantities of food, less than the maximum capacity indicated on the data plate, enable the **SUPER FREEZE** function in the "24 hour" mode by pressing the button until the yellow lamp "C" lights on and insert the food to be frozen. After 24 hours, or once the optimum temperatures have been reached, the rapid freezing function is automatically disabled.

- 48 HOURS FAST FREEZING

For large quantities of food to be frozen (up until the maximum load indicated on the data plate), enable **SUPER FREEZE** function in the "48 hours" mode. We recommend you to enable this function 24 hours before placing the food to be frozen in. Please keep pressing the fast freezing button until the yellow lamp "C" begins to flash. After 24

hours, the yellow lamp will stop flashing and go back to being permanently lit; you can now insert the food to be frozen. After another 24 hours, the function will be disabled automatically.

During the freezing process, avoid opening the door of the freezer.

The maximum daily quantity of food that can be frozen is indicated on the rating plate located to the left of the vegetable crisper.

In order to freeze and then thaw foods optimally, it is recommended that you divide food into small portions so that they freeze quickly and uniformly. The packages should be clearly marked with the content and the date they were frozen.

Do not open the freezer door in the event of a power failure or malfunction. This precaution will slow the rise in temperature within the compartment. If the door is not opened, frozen and fast-frozen foods will remain in their current state for approximately 9-14 hours.

Do not place full bottles in the freezer: they could easily burst because all liquids increase in volume when they freeze.

WARNING: to avoid blocking the air circulation inside the freezer compartment, it is advisable not to obstruct the ventilation holes with food or containers.

Guide to Using the Freezer

Meat and Fish

Food	Wrapping	Tenderising (days)	Storage (months)	Thawing Time
Beef Roast	Tinfoil	2 / 3	9 / 10	Not required.
Lamb	Tinfoil	1 / 2	6	Not required.
Pork Roast	Tinfoil	1	6	Not required.
Veal Roast	Tinfoil	1	8	Not required.
Veal/Pork Chops	Each piece wrapped in cling wrap and then in tinfoil (4 to 6 slices)		6	Not required.
Veal/Lamb Cutlets	Each piece wrapped in cling wrap and then in tinfoil (4 to 6 slices)		6	Not required.
Minced Meat	In aluminium containers covered with cling wrap.	Freshly minced	2	Slowly in refrigerator.
Heart and Liver	Plastic Baggies		3	Not required.
Sausages	Cling Wrap or Tinfoil		2	As necessary.
Chicken and Turkey	Tinfoil	1 / 3	9	Very slowly in refrigerator.
Duck and Goose	Tinfoil	1 / 4	6	Very slowly in refrigerator.
Pheasant, Partridge and Wild Duck	Tinfoil	1 / 3	9	Very slowly in refrigerator.
Hare and Rabbit	Tinfoil	3 / 4	6	Very slowly in refrigerator.
Venison	Tinfoil or Cling Wrap	5 / 6	9	Very slowly in refrigerator.
Large Fish	Tinfoil or Cling Wrap		4 / 6	Very slowly in refrigerator.
Small Fish	Plastic Baggies		2 / 3	Not required.
Crustaceans	Plastic Baggies		3 / 6	Not required.
Shellfish	Store in salted water in aluminium containers or plastic containers.		3	Very slowly in refrigerator.
Boiled Fish	Tinfoil or Cling Wrap		12	In hot water.
Fried Fish	Plastic Baggies		4 / 6	Directly in pan.

Fruits and Vegetables

Food	Preparation	Blanching Time	Wrapping	Storage (months)	Thawing Time
Apples and Pears	Peel and cut into slices.	2'	In Containers (cover with syrup)	12	In refrigerator very slowly.
Apricots, Peaches, Cherries and Plums	Peel and pit.	1' / 2'	In Containers (cover with syrup)	12	In refrigerator very slowly.
Strawberries Blackberries and Raspberries	Rinse and fry.		In Containers (cover with sugar)	10 / 12	In refrigerator very slowly.
Cooked Fruit	Cut, cook and strain.		In Containers (add 10% sugar)	12	In refrigerator very slowly.
Fruit Juice	Wash, cut and crush.		In Containers (sugar to taste)	10 / 12	In refrigerator very slowly.
Cauliflower	Remove leaves, cut head into small pieces and blanch in water and a little lemon juice.	2'	Plastic Baggies	12	Not required.
Cabbage and Brussel Sprouts	Wash and cut into small pieces.	1' / 2'	Plastic Baggies	10 / 12	At room temperature.
Peas	Shell and wash.	2'	Plastic Baggies	12	Not required.
French Beans	Wash and slice if required.	2	Plastic Baggies	10 / 12	Not required.
Carrots, Peppers and Turnips	Peel, wash and slice if necessary.	3' / 4'	Plastic Baggies	12	Not required.
Mushrooms and Asparagus	Wash, peel and cut up.	3' / 4'	Plastic Baggies or Containers	6	At room temperature.
Spinach	Wash and mince.	2'	Plastic Baggies	12	At room temperature.
Vegetable for Soups	Wash and cut up in small pieces.	3'	Plastic Baggies or Containers	6 / 7	Not required.
Various Foods	Preparation	Blanching Time	Wrapping	Storage (months)	Thawing time
Bread			Plastic Baggies	4	At room temperature or in the refrigerator
Cakes			Plastic Baggies	6	About 10 minutes at room temperature, cook at 100/200°C.
Cream			Plastic Containers	6	At room temperature or in refrigerator.
Butter			In original wrapping or tinfoil	6	In refrigerator.
Boiled Food or Vegetable Soup			Plastic or Glass Containers	3 / 6	At room temperature or in hot water.
Eggs			Freeze without shells in small containers	10	At room temperature or in refrigerator.

Tips on Saving Energy

- Install the Appliance Properly

In other words, away from heat sources and direct sunlight, in a well ventilated room complying with the minimum distances indicated in the paragraph entitled, " Installation/Ventilation."

- Use the Right Temperature Setting

A setting which is too cold increases energy consumption.

- Do not Overfill

To store food properly, the cold air must circulate freely within the refrigerator. If it is overfilled, this will prevent proper air circulation, forcing the compressor to work continuously.

- Close the Doors

Open your refrigerator as little as possible because each time you do so you lose much of the cold air. To raise the temperature to the proper level again, the motor must work for a long time, consuming energy.

- Keep an Eye on the Seals

Keep the seals clean and make sure that they adhere well to the door. This alone will ensure that no cold air escapes.

- No Hot Foods

A hot pot or pan placed in the refrigerator immediately raises the temperature several degrees. Let hot cookware and food cool to ambient temperature before placing them in the refrigerator.

Alarm buzzers and visual warnings

Doors open alarm

Should the appliance doors remain open for longer than two minutes, an alarm buzzer sounds and/or the light inside the fridge/freezer will begin to flash. The buzzer will be silenced and the flashing will cease when the doors are shut.

Abnormal freezer heating alarm.

There are two types of alarms that signal an abnormal rise in the temperature of the freezer.

A1 Alarm

To signal an excessive heating on the part of the freezer, a buzzer will sound and A1 comes up on the display, while the red indicator light begins to flash: in this case, to prevent the food from refreezing, the freezer will try to maintain a temperature of 0°, thus allowing you to use up the food within 24 hours or to cook it and then refreeze it.

The buzzer can be silenced and the visual signal cancelled by opening and shutting one of the fridge-freezer doors.

To return to normal operating conditions, set the freezer knob to position ● (refrigerator off) and then turn the appliance back on.

A2 Alarm

If the temperature inside the freezer continues to rise to excessively high values, the buzzer will sound yet again and the red indicator light will start flashing, while A2 comes up on the display: in this case, we recommend you empty out your freezer and check the conditions of the food, as it may be necessary to throw it away. Under no circumstances should the food be refrozen. In this case also, to prevent the food from refreezing, the freezer will try to maintain a temperature of 0°.


The buzzer can be silenced and the visual signal cancelled by opening and shutting one of the fridge-freezer doors.

To return to normal operating conditions, set the freezer knob to position ● (refrigerator off) and then turn the appliance back on.

Keeping Your Appliance in Shape

Before doing any cleaning, disconnect the appliance from the electricity (by pulling out the plug or turning off the general switch in your home).

Holiday Function

Mould and bad odours forming inside your unused refrigerator when you go on holiday, need no longer be a problem. Just enable the Holiday function. By turning the freezer compartment temperature adjustment knob on to the symbol HOLIDAY, the freezer compartment will continue to operate at a temperature of -18°C . At the same time by turning the fridge compartment temperature adjustment knob onto the symbol , the fridge compartment will operate at a temperature of ca. $+11^{\circ}\text{C}$. (You can store your make-up and beauty products in it, for example). The fridge compartment will continue to operate enabling the optimum food conservation and the minimum energy consumption.

Cleaning and maintenance

Always unplug the appliance from the mains before cleaning.

- Your appliance is manufactured with hygienic odourless materials. To preserve these characteristics, always use sealed containers for strong smelling foods to avoid the formation of odours that are difficult to remove.

- Use only a water and bicarbonate solution: Clean the internal and exterior of your appliance with a sponge soaked with a warm water and sodium bicarbonate solution, which is also a good disinfectant. If you do not have any sodium bicarbonate at home, use neutral detergent.

- What not to use: Do not use abrasive detergents, bleach or detergents containing ammonia. Never use solvent based products.

- All the removable parts can be cleaned by soaking in hot soapy water or detergent. Remember to dry thoroughly before replacing them.

- What about the back panel? Dust may deposit on the back panel and affect the proper running of the appliance. To remove dust, vacuum away the dust very carefully using the appropriate vacuum cleaner accessory.

- Discontinued use of the appliance: If the appliance is not in use for any length of time, remember to clean the interior and dry thoroughly, leaving the doors open to prevent the formation of bad odours and mould.

- How to replace the internal lamp. The lamp for the internal light is situated at the rear of the thermostat box. To replace it, disconnect the appliance from the electricity mains, unscrew the burned out bulb and replace it with another bulb with a wattage no higher than 10 Watt, follow the instructions illustrated in fig. 4.

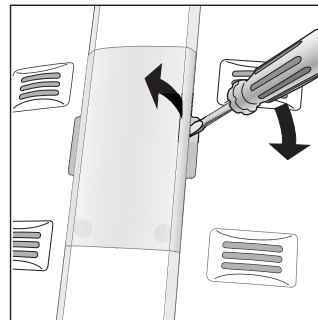


Fig. 4

Is There any Problem?

The refrigerator does not function.

Have you checked whether:

- The main switch for the electricity of the apartment or home has been turned off;
- The plug is properly inserted in the outlet;
- The outlet is adequate; try inserting the plug into another outlet in the room.

The motor does not start

Have you checked whether:

- 8 minutes have passed since you switched the appliance on?

This model is in fact provided with a motor protection control system which means that it will only start approximately 8 minutes after being switched on.

The refrigerator and the freezer do not cool properly.

Have you checked whether:

- The doors do not close well or the seals are faulty;
- The doors are left open too long;
- The thermostat knob is not on the proper setting;
- The refrigerator or freezer is overfilled.

The food in the refrigerator becomes too cold.

Have you checked whether:

- The thermostat knob is on the proper setting;
- The food is in contact with the back wall - which is the coldest part.

The motor runs continuously.

Have you checked whether:

- Whether the fast freeze button is pressed or not (the yellow lamp flashes or lights on continuously);
- The doors are not closed well or have remained open too long;
- The ambient temperature is too high.


The appliance makes too much noise.

The gas refrigerant produces a slight noise even when the compressor is not running (this is not a defect).

Have you checked whether:

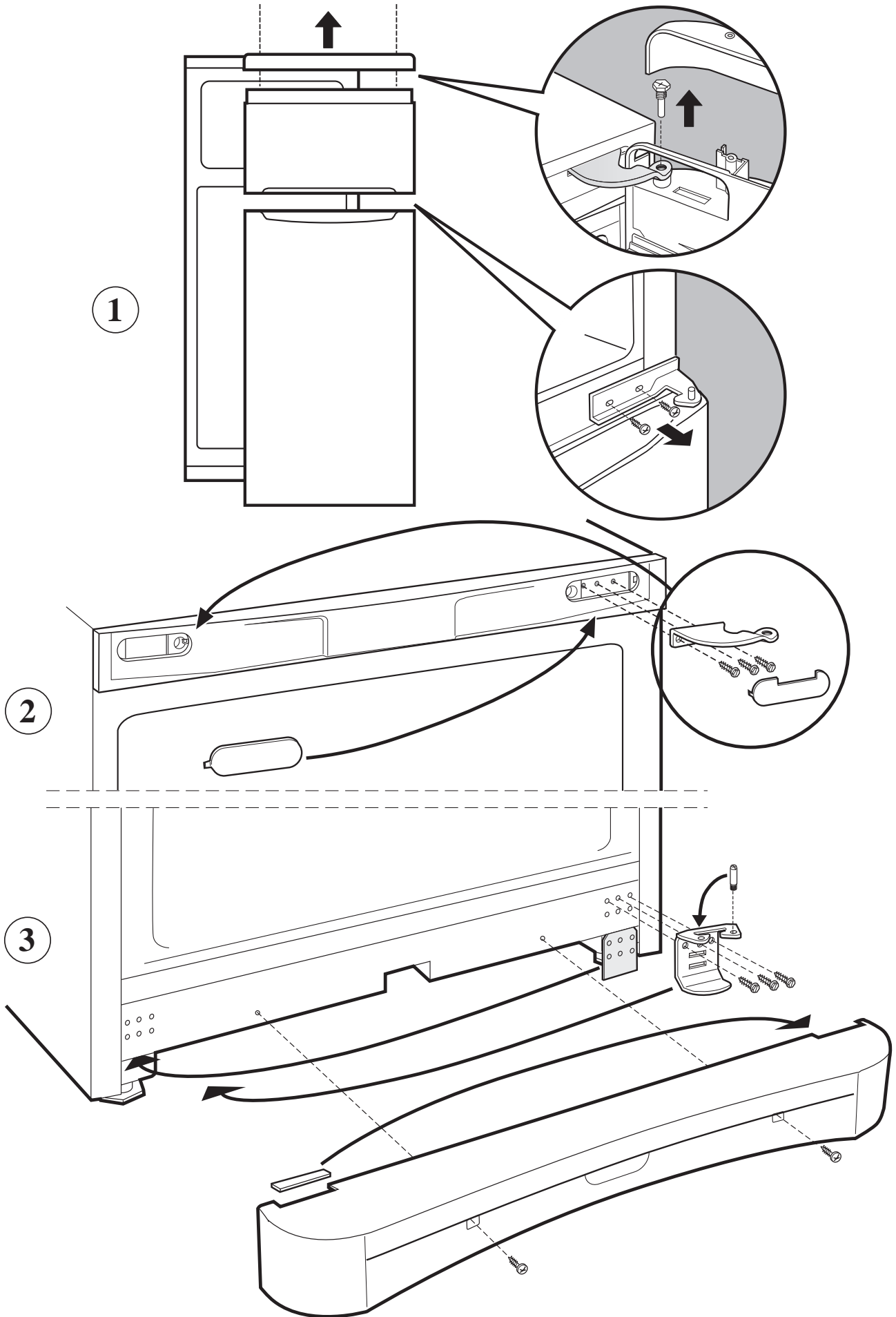
- The refrigerator is leveled on a flat surface.
- The appliance was installed between cabinets or objects that vibrate and make noise.

If after all the checks, the appliance still does not operate or the problem persists, call the nearest Service Centre and inform them of: the type of problem, the abbreviation of the model name (Mod.) and the relative numbers (S/N) written on the rating plate located at the bottom left next to the vegetable crisper (see example in the figure below).

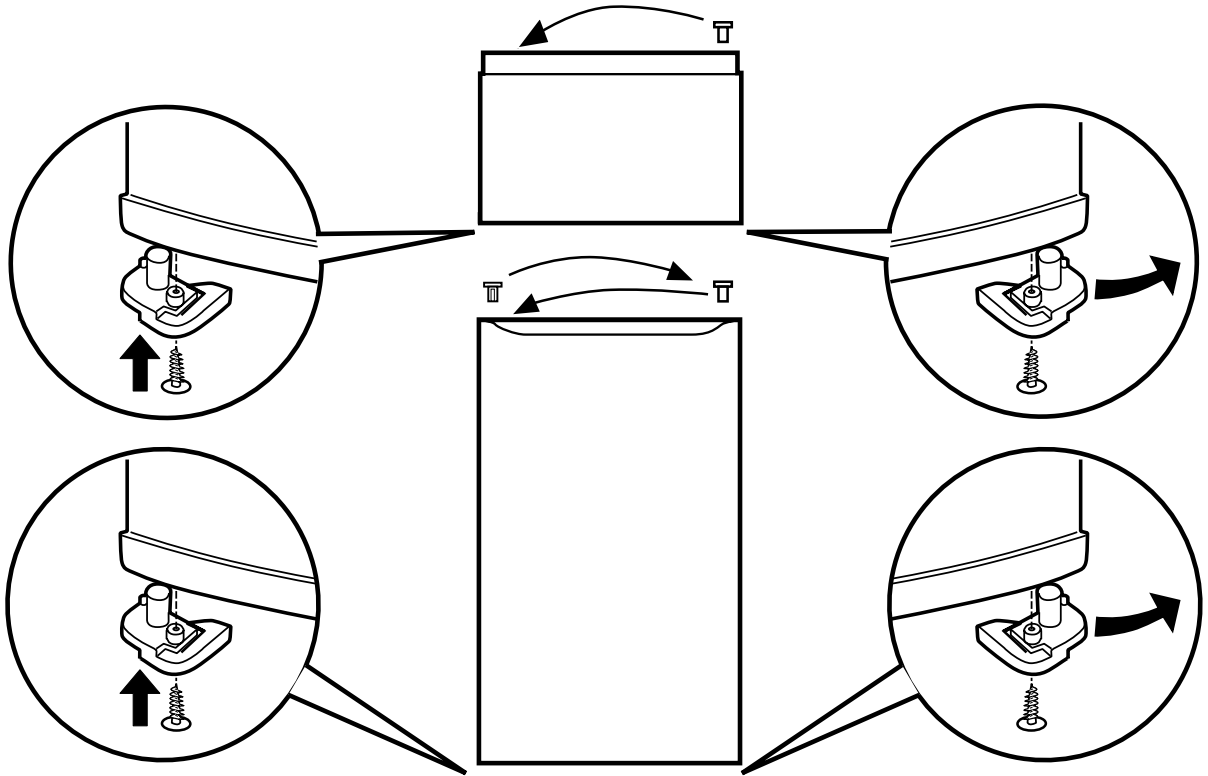
Mod. RG 2330		TI	Cod. 93139180000		S/N 704211801		
240 V-	50 Hz	150 W	W	Fuse	A	Max 15	
Total	340	75			Freez. Capac	Class	
Gross Bruto		Gross Bruto		Net Util	Gross Bruto	Poder de Cong	Clase N
						kg/24 h 4,0	Classe
Compr. Syst.	R 134 a	Test	Pressure HIGH-235				
Kompr.	kg 0,090	P.S.-I.	LOW 140				
Made in Italy 13918							

Never call on unauthorized technicians and always refuse spare parts which are not originals.

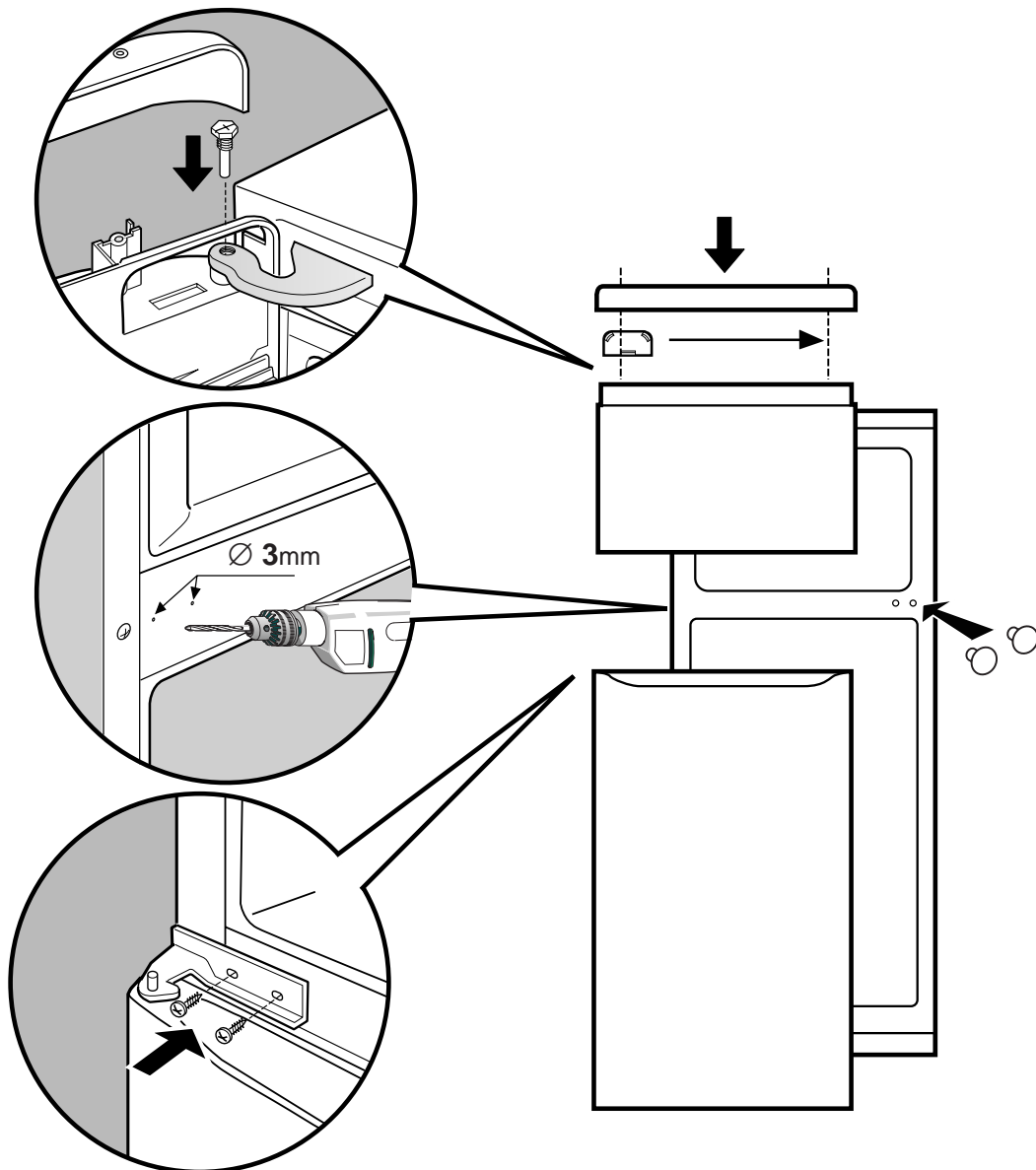
Reversing the door opening



4



5



Merloni Elettrodomestici

Viale Aristide Merloni 47

60044 Fabriano

Italy

Tel +39 0732 6611

Fax +39 0732 662501

www.merloni.com

Free Manuals Download Website

<http://myh66.com>

<http://usermanuals.us>

<http://www.somanuals.com>

<http://www.4manuals.cc>

<http://www.manual-lib.com>

<http://www.404manual.com>

<http://www.luxmanual.com>

<http://aubethermostatmanual.com>

Golf course search by state

<http://golfingnear.com>

Email search by domain

<http://emailbydomain.com>

Auto manuals search

<http://auto.somanuals.com>

TV manuals search

<http://tv.somanuals.com>