



16574014

Edition 1

June 2006

# Air Grinder, Die Grinders and Sanders CA Angle Series

---

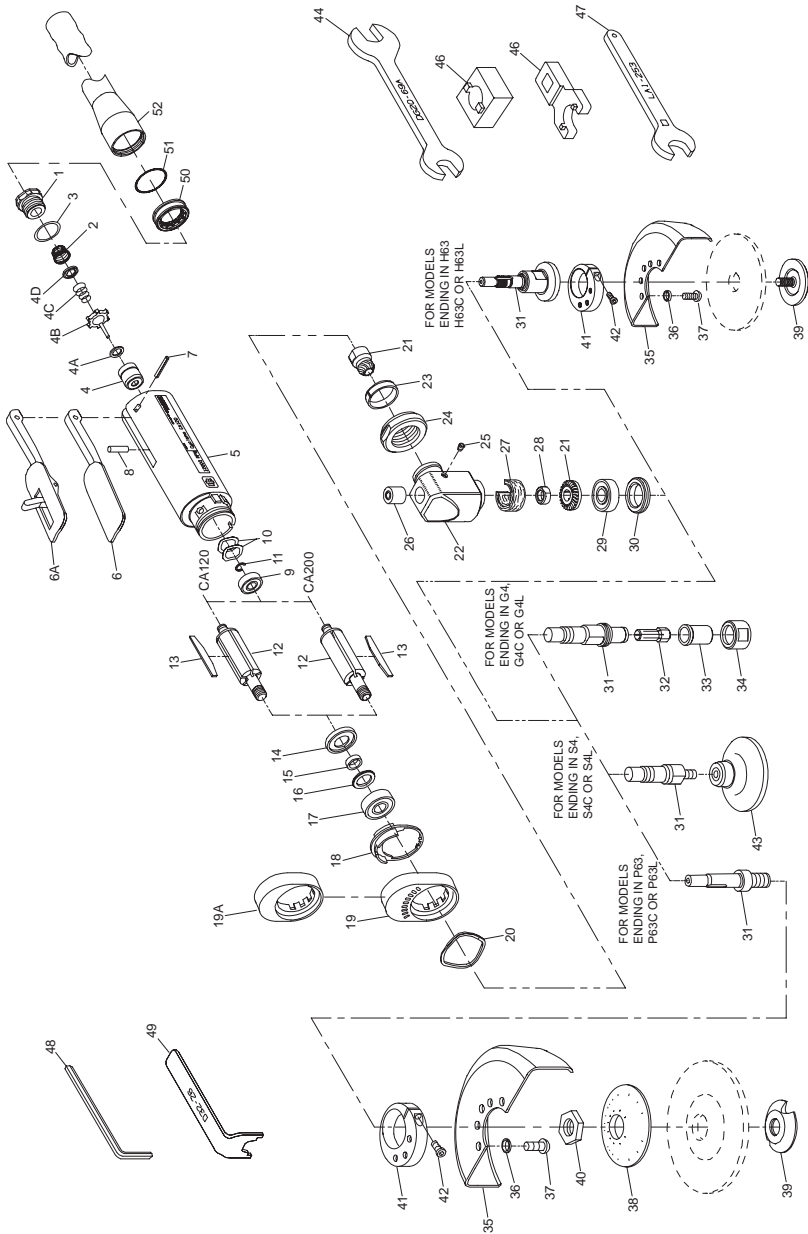
## Parts Information



Save These Instructions



# CA Angle Air Grinder, Die Grinder and Sander Exploded Diagram



(Dwg. TPA1268-6)

## CA Angle Air Grinder, Die Grinder and Sander Parts List

Item	Part Description	Part Number	Item	Part Description	Part Number
	<b>Common parts for ALL CA Grinders</b>		22	Angle Housing Assembly	LA1-A550S
1	Inlet Assembly	LG1-A465A	23	Clamp Spacer	LA1-46
2	Inlet Screen	R1602-61	24	Clamp Nut	LG1-27
• 3	Inlet Seal	85H-167	25	Grease Fitting	D0F9-879
	Throttle Valve Cartridge Kit	LG1-K300	26	Upper Arbor Bearing	AG210-693
4	Throttle Valve Cartridge Case	LG1-300A	□ 27	Wick	
4A	Throttle Valve Seat	LG1-303		for CA120	LA1-560
4B	Throttle Valve	AG210-302		for CA200	LA1-561
4C	Throttle Valve Spring	7L-51	28	Bevel Gear Nut	AG210-578A
4D	Throttle Valve Spring Seat	LG1-592	29	Lower Arbor Bearing	AG210-24
5	Motor Housing	LG1-40	30	Arbor Bearing Cap	AG210-531
6	Throttle Lever	LG1-273	31	Arbor	
6A	Locking Throttle Lever Assembly (for models ending in L, C, ML or MC)	LG1-A400		for all models ending in G4, G4C or G4L	AG210-4-G4
*	Lever Lock	LG1-402		for all models ending in S4, S4C or S4L	AG210-4-W2
*	Lock Spring	LG1-405			
*	Lock Pin	5UT-757		for all models ending in P63, P63C or P63L	LA1-6
7	Throttle Lever Pin	61H-120			
8	Throttle Valve Plunger	LG1-191		H63, H63C or H63L	LA1-103-1
9	Rear Rotor Bearing	DG230-22	*	Warning Label	
• 10	Rear Rotor Bearing Spacer (2)	DG20-278		for models ending in P63-EU	EU-63-99
• 11	Rear Rotor Bearing Retainer	LG1-118		for all other models ending in-EU	EU-99
12	Rotor			for all other models	LG1-99
	for CA120 (5 vane slots)	LG1-53-5	*	Nameplate	
	for CA200 (3 vane slots)	LG1-53-3		for CA120 models ending in-EU	LA112-EU-301
• 13	Vane Packet (set of 5 Vanes)	LG1-42-5		for all other CA120 models	LA112-301
14	Front End Plate	LG1-11		for CA200 models ending in-EU	LA120-EU-301
15	Front End Plate Spacer	DG10-65-5		for all other CA200 models	LA120-301
• 16	Front Seal Cup	LG1-32		<b>Additional parts for all collet models</b>	
17	Front Rotor Bearing	LG1-24			
18	Flow Ring		32	Collet	
	for CA120 (12000 rpm) (brown)	LG1-103-1		for models ending in-EU	DG110-700- 6mm
	for CA200 (20000 rpm) (red)	LG1-103-3			
19	High Profile Flange	LG1-23		for all other models	DG110-700- G4
# 19A	Low Profile Concentric Flange (for all models ending in C)	LG1R-23			
			33	Nosepiece	AG210-698A
20	Flange Clamp	LG1-29	34	Collet Nut	AG210-699A
21	Bevel Pinion and Bevel Gear (sold only as a matched set)				
	for CA120	LA1-A552-2.0S			
	for CA200	LA1-A552-1.5A			

\* Not illustrated.

• To keep downtime to a minimum, it is desirable to have on hand certain repair parts. We recommend that you stock one (pair or set) of each part indicated by a bullet (•) for every four tools in service.

□ The LA1-A550S Angle Housing Assembly is furnished with two Wicks. Use Wick (LA1-561) with the notch on CA200 models.



# Always install a Locking Throttle Lever Assembly (6A) on a tool with a Low Profile Concentric Flange (19A). Do not equip a tool with a standard non-locking Throttle Lever (6) and Low Profile Concentric Flange. This can allow the tool to continue to run if dropped or set down.

Item	Part Description	Part Number	Item	Part Description	Part Number
	<b>Additional parts for all models ending in P63 or H63</b>		*	Variable Speed Control Assembly (with piped away exhaust)	LG1-A1015
35	Wheel Guard	AG20-106-3	Ø	Piped Away Exhaust Kit	LG1-K284
36	Guard Lock Washer (3)	R2-320	+ 50	Exhaust Hose Adapter	LG1-284
37	Guard Mounting Screws (3)	LA1-667	+ 51	Exhaust Hose Retainer	LG1-67
38	Wheel Flange (for P63)	R0A2D61-337	+ 52	Exhaust Hose	3RL-284
39	Flange Nut		*	Bur Kit	LG1-K1
	for P63	AG21-337A-3	*	2" Abrasive Pad Kit	LG1-K2
	for H63	LA1-388	*	3" Abrasive Pad Kit (for CA120 models only)	LG1-K3
40	Flange Spacer (for P63)	LA2-111			
41	Guard Adapter Assembly	LA1-A710	*	Shroud Kit (for collet models only)	LA1-K980
42	Guard Pinch Bolt	804-634	*	No. 10 Oil (4 oz. bottle)	10Z4
	<b>Additional parts for all models ending in S4</b>		*	No. 63 Oil (4 oz. bottle)	63Z4
			*	No. 67 Grease (1 lb. can)	67-1LB
43	Sanding Pad (standard on models ending in S4M, S4MC or S4ML; optional on models ending in S4, S4C or S4L)		*	No. 77 Grease (1 lb. can)	77-1LB
	for CA120 (3" diameter)	3-PAD	*	Shroud Kit (for non-collet models)	LA1-K975
	for CA200 (2" diameter)	2-PAD			
	<b>Accessories for CA models</b>				
44	Collet Body Wrench/Collet Nut Wrench (7/16" x 11/16" ) (included with all models ending in G4, G4C or G4L)	DG20-69A			
46	Arbor Bearing Cap Wrench				
	for models ending in S4, S4C or S4L	AG210-29			
	for models ending in H63	LA1-29			
47	Clamp Nut Wrench (included with all models)	LA2-253			
48	Arbor Wrench (3/16" hex) (included with all models ending in P63, P63C or P63L)	AG220-340			
49	Wheel Nut Wrench (included with all models ending in P63, P63C or P63L)	D32-26			

\* Not illustrated.

Ø When ordering a Piped-Away Exhaust Kit, make certain the wrench hex on the Inlet Assembly of your tool is threaded. If it is **NOT** threaded, order a new Inlet Assembly (Part No. LG1-A465A).

+ Standard equipment on models ending in **M, MC or ML** and **ALL** Front Exhaust models; optional equipment on all other models.

## Parts and Maintenance

When the life of the tool has expired, it is recommended that the tool be disassembled, degreased and parts be separated by material so that they can be recycled.

Tool repair and maintenance should only be carried out by an authorized Service Center. Refer all communications to the nearest **Ingersoll Rand** Office or Distributor.

## Related Documentation

For additional information refer to:  
 Product Safety Information Manuals 04584959, 04580387 and 04580288.  
 Product Information Manuals 16576282, 16576308 and 80221096.  
 Product Maintenance Information Manual 16575060.

Manuals can be downloaded from [www.irttools.com](http://www.irttools.com).

---

## Notes



---

## Notes

**[www.irtools.com](http://www.irtools.com)**

© 2006 Ingersoll Rand Company





## Free Manuals Download Website

<http://myh66.com>

<http://usermanuals.us>

<http://www.somanuals.com>

<http://www.4manuals.cc>

<http://www.manual-lib.com>

<http://www.404manual.com>

<http://www.luxmanual.com>

<http://aubethermostatmanual.com>

Golf course search by state

<http://golfingnear.com>

Email search by domain

<http://emailbydomain.com>

Auto manuals search

<http://auto.somanuals.com>

TV manuals search

<http://tv.somanuals.com>