



16574071  
Edition 2  
December 2009

# Air Grinder, Sander and Polisher

77A Series

---

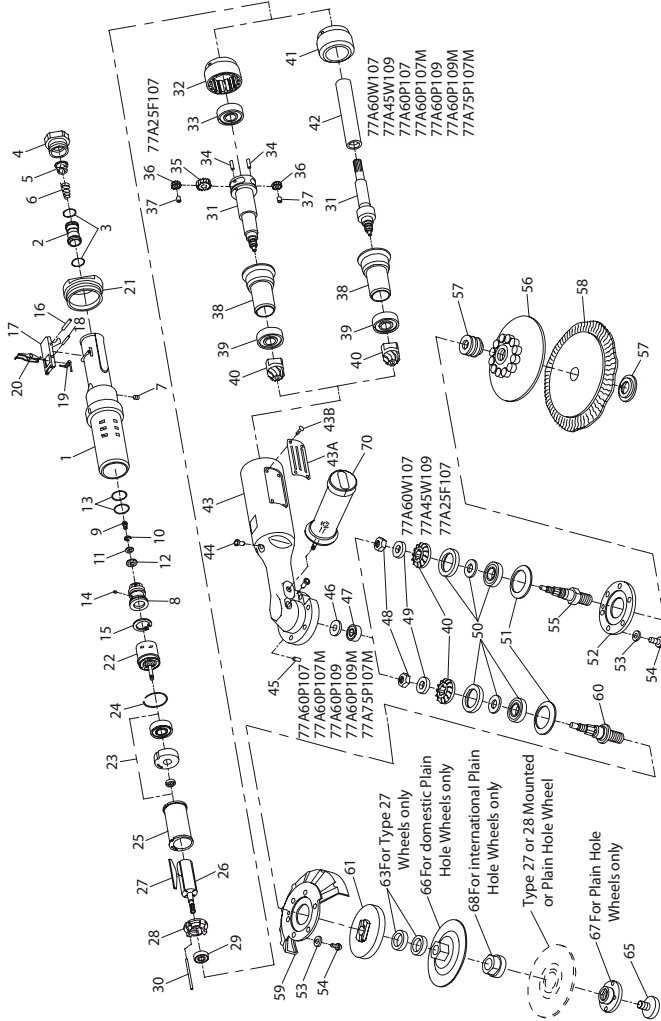
## Parts Information



Save These Instructions



# 77A Angle Grinder, Sander and Polisher Exploded Diagram



(Dwg. TPA793-6)

## 77A Angle Grinder, Sander and Polisher Parts List

Item	Part Description	Part Number	Item	Part Description	Part Number
1	Throttle Handle Assembly	77H-A160	43B	Nameplate Screw (4)	BN403-302
2	Throttle Valve Assembly	88V60-A302	*	Warning Label	
† • 3	Seal (2)	C321-606		for Grinders ending in -EU	EU-99
4	Inlet Bushing	77H-38		for all other Grinders	WARNING-4-99
† • 5	Inlet Bushing Screen	834-61		for Sanders and Polishers ending in -EU	EU-99
† 6	Throttle Valve Spring	77H-262		for all other Sanders and Grinders	WARNING-5-99
7	Oil Chamber Plug	R2-227	44	Grease Fitting (2)	1305R-188
8	Throttle Valve Seat Support Assembly	77H-A303	45	Mounting Plate Pin	77A-31
9	Valve Seat Screw	PS3-83	• 46	Upper Bearing Spring Washer	4U-278
10	Valve Seat Lock Washer	H54U-352	• 47	Upper Arbor Bearing	WWA100-97
11	Valve Seat Washer	99V-155	48	Bevel Gear Nut	77A-578
† • 12	Valve Seat	R4-159A	49	Bevel Gear Spacer	77A-25
† 13	Valve Support Seal (2)	SPP101-743	50	Arbor Lower Bearing Assembly	77A-A593
14	Oiler Feeder Plug	77H-75	51	Lower Arbor Spring Washer	77A-307
15	Throttle Valve Seat Support Retainer	77H-518	52	Sander Arbor Retaining Plate	77A-55
16	Throttle Lever Pin	MR-100	53	Screw Lock Washer (6)	88H60-67
17	Throttle Lever Assembly	77H-A400	54	Guard Screw or Retaining Plate Screw (6)	77H-638
18	Lever Lock Pin	R100B-120	55	Sander Arbor	77A-204-P10
19	Lever Lock Spring	DG120-405	56	Sanding Pad Assembly	
20	Lever Lock	DG120-402		with 5" Sanding Pad	77A-AM825-5
21	Coupling Nut	77H-282		with 7" Sanding Pad (medium)	77A-AM825-7
‡ 22	Controller Assembly (Consists of Controller and Rear End Plate Assembly)			with 7" Sanding Pad (firm)	77A-BM825-7
	for 77A45W109	77H90-A524RH	57	with 9" Sanding Pad	77A-AM825-9
	for 77A60W107, 77A60P107, 77A60P107M, 77A60P109 and 77A60P109M	77H120-A524RH	58	Pad Mounting Kit	77A-826
			59	Wool Bonnet (for 77A25F107)	P500-850
23	Rear End Plate Assembly (consists of rear end plate, rotor bearing and required spacers)	77H-A12		Depressed Center Wheel Guard	
				for 7" diameter wheels	77A-106-7
				for 9" diameter wheels	77A-106-9
† • 24	Rear End Plate Gasket	77H-739	60	Depressed Center Wheel Arbor	77A-4-B10
25	Cylinder	77H-3	61	Autobalancer Assembly	99V60-A713
26	Rotor	77H-53RH	*	Autobalancer Wrench (7/8" single end; open-end wrench)	88V60-169
† • 27	Vane Packet (set of 4 Vanes)	77H-42-4	63	Depressed Center Wheel Spacer (2 for all Type 27 Mounted Wheels)	99V-286
• 28	Front End Plate	77H-11	65	Wheel Retaining Screw (for all Type 27 and 28 Wheels)	99V60-219
29	Front Rotor Bearing	77H-24	66	Depressed Center Wheel Flange (for Type 27 & 28 Plain Hole Wheels)	99V60-386
30	Cylinder Dowel	77H-98	67	Depressed Center Wheel Nut (for Type 27 and 28 Plain Hole Wheels)	99V85-186
31	Bevel Pinion Driver		*	Depressed Center Wheel Nut Spanner Wrench	D32-26
	for 77A25F107	77A-8		Wheel Flange Wrench (for all Grinders)	77AQT4-254
	for all others	77A-7		Depressed Center Wheel Flange (for 77A60P107M, 77A60P109M and 77A75P107M with Type 27 and Type 28 Plain Hole Depressed Center Wheels)	99V60-386-M
32	Internal Gear	77H-406	68	Dead Handle	88V60-48
33	Bevel Pinion Driver Bearing	WFS182-97	70	Nameplate	66H-301
34	Planet Gear Shaft (2)	G700-191	73	Nameplate Screw (4)	BN403-302
35	Rotor Pinion	77H-17	*	Bearing Clamp Assembly	77H-A952
36	Planet Gear Assembly (2)	77H-A10	*	Controller Wrench	77H-950
37	Planet Gear Bearing (one for each gear)	G700-654	*	Throttle Valve Seat Support Retainer Pliers	77H-154
38	Thrust Spacer	77A-104	*	Coupling Nut Wrench	77H-281
39	Bevel Pinion Bearing Assembly	77A-A510	*	1/2" Pipe Tap Inlet Bushing	88V60-38
40	Matched Gear Set (Bevel Gear and Pinion not sold separately)	77A-A552	*	Vibra-Tite*** 0.6 cc	5R-VT06
41	Motor Spacer	77E-208-H8	*	Adhesive Kit	77H-KVLT
42	Arbor Coupling	66H-304	*	Tune-up Kit includes illustrated parts: (3 [2], 5, 6, 12, 13 [2], 24 and 27)	77H77A-TK3
‡ 43	Angle Arbor Housing				
	for models ending in -EU	77A-EU-A40-P10			
	for all other models	77A-A40-P10			
43A	Nameplate Kit				
	for models ending in -EU	77A-EU-K301			
	for all other models	77A-K301			

\* Not Illustrated.

• To keep downtime to a minimum, it is desirable to have on hand certain repair parts. We recommend that you stock one (pair or set) of each part indicated by a bullet (•) for every four tools in service.

‡ Whenever a new Angle Arbor Housing is installed, select the correct Nameplate from the Nameplate Kit (43A) and attach it to the Housing with the Nameplate screws (43B).

† Indicates Tune-up Kit part.

# Early models of these Grinders had Rotors and Controller Assemblies with left-hand threads. If you have a model with left-hand threads, contact **Ingersoll Rand** when ordering replacement parts.

\*\*Registered trademark of ND Industries.

---

## Parts and Maintenance

When the life of the tool has expired, it is recommended that the tool be disassembled, degreased and parts be separated by material so that they can be recycled.

Tool repair and maintenance should only be carried out by an authorized Service Center.

Refer all communications to the nearest **Ingersoll Rand** Office or Distributor.

---

## Related Documentation

For additional information refer to:

Air Grinder, Sander and Polisher Product Safety Information Manual 04580387 and 04584959.

Air Grinder, Sander and Polisher Product Information Manual 80221740, 80221757, 80221765 and 80221773.

Air Grinder, Sander and Polisher Maintenance Information Manual 16575128.

Manuals can be downloaded from [www.ingersollrandproducts.com](http://www.ingersollrandproducts.com).

**Notes:**

---

---

**Notes:**

**Notes:**

---

[www.ingersollrandproducts.com](http://www.ingersollrandproducts.com)

© 2009 **Ingersoll Rand** Company





## Free Manuals Download Website

<http://myh66.com>

<http://usermanuals.us>

<http://www.somanuals.com>

<http://www.4manuals.cc>

<http://www.manual-lib.com>

<http://www.404manual.com>

<http://www.luxmanual.com>

<http://aubethermostatmanual.com>

Golf course search by state

<http://golfingnear.com>

Email search by domain

<http://emailbydomain.com>

Auto manuals search

<http://auto.somanuals.com>

TV manuals search

<http://tv.somanuals.com>