



16573263
Edition 2
February 2014

Air Grinders and Die Grinders

61H Series

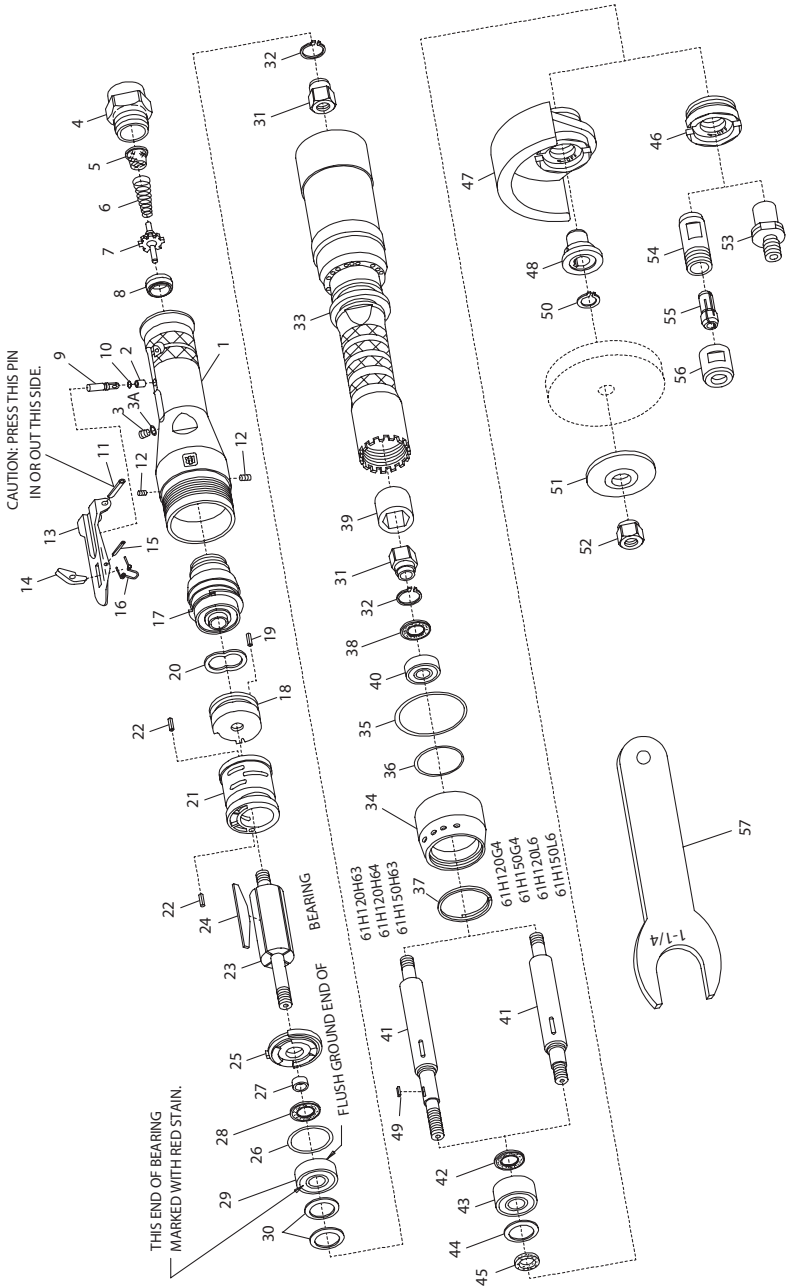
Parts Information



Save These Instructions



G61H Series Air Grinder/Die Grinder - Exploded View



(Dwg. TPA1222 -2)

61H Series Air Grinder/Die Grinder - Parts List

Item	Part Description	Part Number	Item	Part Description	Part Number
1	Throttle Handle Assembly		*	Warning Label (included with 61H-A40)	WARNING-4-99
	for 61H120 models ending in -EU	61H120-EU-A160	*	Warning Label (for all models ending in -EU)	WARNING-4-99
	for all other 61H120 models	61H120-A160	34	Exhaust Deflector	61H-23
	for 61H150 models ending in -EU	61H150-EU-A160	35	Rear Deflector Seal	AF160-291Z
	for all other 61H150 models	61H150-A160	36	Front Deflector Seal	M0V010AA-379
2	Throttle Plunger Bushing	AG210-91	37	Deflector Retaining Ring	61H-203
3	Oil Chamber Plug	D92-227	38	Seal Cup Assembly	61H-A32
3A	Washer	R3-92A	39	Arbor Coupling	61H-304
4	Inlet Bushing	434-565	40	Rear Arbor Bearing	WFS182-22
5	Air Strainer Screen	61H-61	41	Arbor Assembly	
6	Throttle Valve Spring	DG230-51		for 61H120G4, 61H150G4, 61H120L6 or 61H150L6	61H-A4-L6
7	Throttle Valve	DG230-302		for 61H120H63, 61H120H64 or 61H150H63	61H-A4-H6
8	Throttle Valve Seat	DG230-303	42	Seal Cup Assembly	61H-A32
9	Throttle Plunger Assembly	61H-A152	43	Wheel End Bearing	61H-33
10	Throttle Plunger Stop	85L-259	44	Bearing Clamp Washer	61H-207
11	Throttle Lever Pin	502B-120	45	Dust Washer	61H-35
12	Rear End Plate Retaining Screw (2)	61H-669	**	Wheel End Bearing Cap (for Model 61H120G4, 61H120L6, 61H150G4 or 61H150L6)	61H-K19
13	Throttle Lever Assembly	61H-A400	46	Wheel Guard	
14	Throttle Lever Lock Kit	61H-K402		for Model 61H120H63 or 61H150H63 (3" diameter)	61H-931A
15	Lever Lock Pin	61H-120		for Model 61H120H64 (4" diameter)	61H-941
16	Lever Lock Spring	61H-405	47	Inner Wheel Flange	
17	Controller Assembly			(for Model 61H120H63, 61H120H64 or 61H150H63)	61H-86-4H6
	for 61H120	61H120-A424	48	Inner Wheel Flange Key	
	for 61H150	61H150-A424		(for Model 61H120H63, 61H120H64 or 61H150H63)	61H-70
18	Rear End Plate Assembly	61H-A12	49	Inner Wheel Flange Retainer	
19	Wiper Plate Alignment Pin	R100BRC0-667A		(for Model 61H120H63, 61H120H64 or 61H150H63)	61H-119
20	Rear Rotor Bearing Washer	R43F-278	50	Outer Wheel Flange	
21	Cylinder Assembly	61H-A3		for Model 61H120H64	61H-16-4H6
22	Cylinder Dowel Pin (2)	JC3350-538		for Model 61H120H63 and 61H150H63	DEG31-16
23	Rotor	61H-53	51	Wheel Flange Nut (for Model 61H120H63, 61H120H64 or 61H150H63)	23-697
24	Vane Packet (set of 4 Vanes)	61H-42-4	52	Cone Wheel Adapter (for Model 61H120L6 or 61H150L6)	DG220-104-L6
25	Front End Plate Assembly	61H-A11	53		
26	Front End Plate Seal	AF120-294			
27	Rotor Spacer Assembly	61H-A65			
28	Seal Cup Assembly	61H-A32			
29	Front Rotor Bearing	61H-24			
30	Motor Clamp Washer (2)	61H-207			
31	Bearing Nut Assembly (2)	61H-A85			
32	Bearing Nut Retainer	R4800-119			
33	Arbor Housing				
	for models ending in G4-EU	61H-A40-EU-G4			
	for models ending in L6-EU	61H-A40-EU-L6			
	for models ending in H63-EU	61H-A40-EU-H63			
	for all other models	61H-A40			

* Not Illustrated

• To keep downtime to a minimum, it is desirable to have on hand certain parts. We recommend that you stock one (pair or set) of each part indicated by a bullet (•) for every four tools in service.

**This Wheel End Bearing Cap can be used with Type 1 wheels for internal grinding only, in accordance with ANSI B186.1 "Safety Code for Portable Air Tools".

61H Series Air Grinder/Die Grinder - Parts List

Item	Part Description	Part Number	Item	Part Description	Part Number
*	Cone Wheel Adapter Wrench	DG20-69	56	Collet Nut	DG120-699A
	Collet Assembly (for Model 61H120G4 or 61H150G4)		*	Collet Nut Wrench (for Model 61H120G4 or 61H150G4)	DG120-69
	for 1/4" diameter shank accessories	DG220-A290-G4			
	for 3/8" diameter shank accessories	DG220-A290-G6	# *	Collet Body Wrench (for Model 61H120G4 or 61H150G4)	DG10-69
	for 8 mm diameter shank accessories	DG220-A290-M8			
Collet Assembly (for Model 61H120H63, 61H120H64 or 61H150H63)		R0-A390-1/4			
54	Collet Body	DG220-290		Collet Body	R0-390-1/4
55	Collet			Collet Sleeve	R0-391-1/4
	for 6 mm (-EU)	G160HD-700-6mm	≅ 57	Controller Wrench	R15-169
	for 1/4" diameter shank accessories	G160HD-700-1/4	*	Tune-up Kit (includes illustrated items 5, 6, 7, 8, 10, 12 [2], 20, 24, 26, 28, 35, 36, 38, 42, 45, 49 and 50)	61H-TK1
	for 3/8" diameter shank accessories	DG120-700-G6			
	for 8 mm diameter shank accessories	DG121-700-M8			

* Not Illustrated

When ordering this Collet Assembly (Part No. R0-A390-1/4) for use with Model 61H120H63, 61H120H64 or 61H150H63 Grinder, a Wheel End Bearing Cap (46) and Dust Washer (45) must also be ordered.

≅ A Controller Wrench (57) is not furnished with the tool and must be ordered separately. This Wrench is required to service the motor and remove or replace the Controller Assembly (17).

Parts and Maintenance

When the life of the tool has expired, it is recommended that the tool be disassembled, degreased and parts be separated by material so that they can be recycled.

Tool repair and maintenance should only be carried out by an authorized Service Center.

Refer all communications to the nearest **Ingersoll Rand** Office or Distributor.

Related Documentation

For additional information refer to:

Air Grinder Product Safety Information Manual 04584959, Air Die Grinder Product Safety Information Manual 04580288,

Air Grinder Product Information Manual 16573214/16576100, Air Die Grinder Product Information Manual 16576118/16576126,

Air Grinder Maintenance Information Manual 16573321.

Manuals can be downloaded from ingersollrandproducts.com.

Notes:

Notes:

Notes:

ingersollrandproducts.com

© 2014 *Ingersoll Rand*



Free Manuals Download Website

<http://myh66.com>

<http://usermanuals.us>

<http://www.somanuals.com>

<http://www.4manuals.cc>

<http://www.manual-lib.com>

<http://www.404manual.com>

<http://www.luxmanual.com>

<http://aubethermostatmanual.com>

Golf course search by state

<http://golfingnear.com>

Email search by domain

<http://emailbydomain.com>

Auto manuals search

<http://auto.somanuals.com>

TV manuals search

<http://tv.somanuals.com>