



16579013
Edition 4
March 2011

Air Impact Wrench

1702 Series

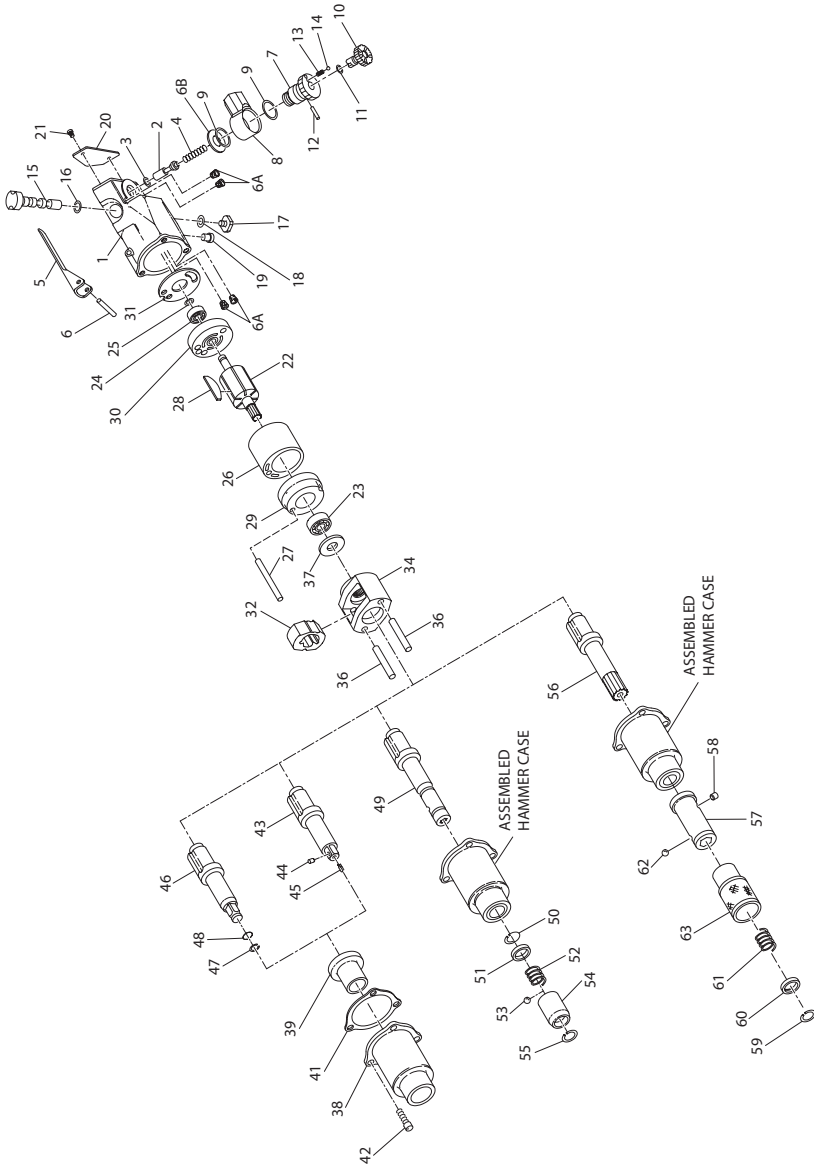
Parts Information



Save These Instructions



1702SB1 Air Impact Wrench - Exploded View



(Dwg. TPA978-2)

1702SB1 Air Impact Wrench - Parts List

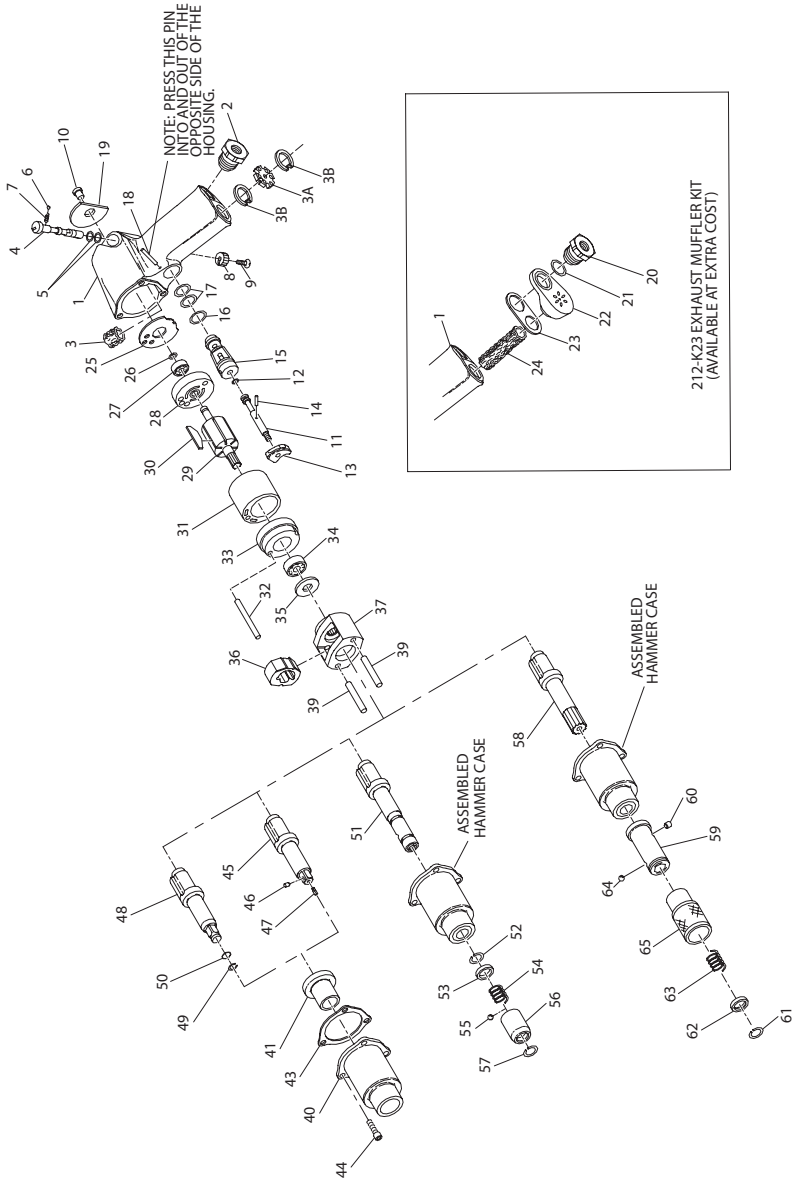
Item	Part Description	Part Number	Item	Part Description	Part Number
1	Motor Housing Assembly	1702SB-A40	39	Hammer Case Bushing	401-641
2	Throttle Valve	R00B2-302	*	Warning Label	WARNING-2-99
† ‡ 3	Throttle Valve Face	401-159	*	.005" Oversize Hammer Case Bushing	401-641-5
‡ 4	Throttle Valve Spring	5081T-151	† ‡ 41	Hammer Case Gasket	2902-36
5	Throttle Lever	201-273	42	Hammer Case Cap Screw (3)	1702-638
6	Throttle Lever Pin	502B-120	43	3/8" Square Drive Anvil Assembly (with pin-type retainer)	1702-P726
‡ 6A	Silencer (4)	1702SB-311			
6B	Inlet Assembly Spacer	R00-35A	‡ 44	Socket Retainer Plunger	5020-716
	Air Inlet Assembly	1702B-A166	‡ 45	Retaining Plunger Spring	401-718
7	Swivel Inlet Body	1702B-165	46	3/8" Square Drive Anvil Assembly (with ring-type retainer)	1702-A626
8	Swivel Inlet Assembly	1702B-B166			
† ‡ 9	Swivel Inlet Seal (2)	R18LF-21	47	Socket Retaining Ring	1702-425
10	Power Regulator Assembly	1702B-A249	48	Retainer Support Ring	1702-426
† ‡ 11	Power Regulator Seal	R00B1-159		Quick-Change Anvil Assembly (1/4" hex)	1702-A926-4
12	Regulator Retainer	201-250	49	Quick-Change Anvil	1702-926-4
‡ 13	Detent Spring	201-251	50	Thrust Ring Lock	5C1-853
‡ 14	Detent Ball	R000B-263	51	Thrust Ring	10A902A2-932-4
15	Reverse Valve Assembly	1702B-A329	52	Retaining Sleeve Spring	2U-931-4
† ‡ 16	Reverse Valve Seal	R0BR1C-283	53	Retaining Ball (5/32" diameter steel)	2U-696
17	Reverse Valve Stop	401-665	54	Retaining Sleeve	2U-930-4
† ‡ 18	Bushing Seal	CE110-210	55	Retaining Sleeve Stop	2U-933-4
19	Grease Fitting	130SR-188		Quick-Change Anvil Assembly (7/16" hex)	1702-A926-7
20	Nameplate	1702SB-301	56	Quick-Change Anvil	1702-926-7
21	Nameplate Screw (3)	BN403-302	57	Anvil Body	10A902A5-925
22	Rotor	401-53	58	Body Lock Pin	10A902A5-936
‡ 23	Front Rotor Bearing	R00H-97	59	Thrust Ring Lock	4U-933-7
† ‡ 24	Rear Rotor Bearing	401-22	60	Thrust Ring	4U-932-7
‡ 25	Rear Rotor Bearing Retainer	MF-18	61	Retaining Sleeve Spring	4U-931-7
26	Cylinder	401-3	62	Retaining Ball (7/32" diameter steel)	2U-722
27	Cylinder Dowel	HH92-74	63	Retaining Sleeve	10A902A5-930
† ‡ 28	Vane Packet (set of 6 Vanes)	401-42A-6	*	Tune-up Kit (includes illustrated parts 3, 4, 6A[4], 9[2], 11, 13, 14, 16, 18, 23, 24, 25, 28, 31, 41, 44 and 45)	1702SB-TK2
29	Front End Plate	201-11			
30	Rear End Plate	201-12			
† ‡ 31	End Plate Gasket	401-739	*	Vertical Hanger	1901-365
† 32	Hammer	1702-724A	*	Horizontal Hanger	1901-366
34	Hammer Frame Assembly	1702-A703A	*	Socket Adapter (3/8" to 1/2")	2U-215
† 36	Hammer Pin (2)	1702-704	*	Quick-Change Chuck	
37	Hammer Frame Washer	1702-706		for 1/4" hex shank accessories	2U-A925-4
38	Hammer Case Assembly	1702-A727		for 7/16" hex shank accessories	502-A925-7

* Not Illustrated.

‡ Indicates Tune-up Kit Part.

† To keep downtime to a minimum, it is desirable to have on hand certain repair parts. We recommend that you stock one (pair or set) of each part indicated by (†) for four tools in service.

1702P1 and 1702P4 Air Impact Wrench - Exploded View



(Dwg. TPA979-3)

1702P1 and 1702P4 Air Impact Wrench - Parts List

Item	Part Description	Part Number	Item	Part Description	Part Number
1	Motor Housing Assembly	1702P-A40	39	Hammer Pin (2)	1702-704
2	Inlet Bushing	402-565	40	Hammer Case Assembly	1702-A727
3	Exhaust Silencer	202-311	41	Hammer Case Bushing	401-641
3A	Exhaust Deflector	1702P-123	*	Warning Label	WARNING-2-99
3B	Deflector Retaining Ring (2)	2908-304	*	.005" Oversize Hammer Case Bushing	401-641-5
4	Reverse Valve	1702P-329	43	Hammer Case Gasket	2902-36
5	Reverse Valve O-ring (2)	CE110-210	44	Hammer Case Cap Screw (3)	1702-638
6	Detent Ball	R000B-263	45	3/8" Square Drive Anvil Assembly (with Pin-Type Retainer)	1702-P726
7	Detent Ball Spring	202-664			
8	Reverse Valve Knob	1702P-666	46	Socket Retaining Plunger	5020-716
9	Knob Screw	WWA100-77	47	Retaining Plunger Spring	401-718
10	Grease Fitting	1305R-188	48	3/8" Square Drive Anvil Assembly (with Ring-Type Retainer)	1702-A626
	Throttle Valve Assembly	202-A302			
11	Throttle Valve	202-302	49	Socket Retaining Ring	1702-425
12	Throttle Valve Face	R000BR1C-283	50	Retainer Support Ring	1702-426
13	Trigger	5RA-93		Quick-Change Anvil Assembly (1/4" hex)	1702-A926-4
14	Throttle Valve Retaining Pin	AF120-322	51	Quick-Change Anvil	1702-926-4
15	Throttle Valve Bushing	202-503	52	Thrust Ring Lock	5C1-853
16	Bushing O-ring, Large	410-283	53	Thrust Ring	10A902A2-932-4
17	Bushing O-ring, Small (2)	202-290	54	Retaining Sleeve Spring	2U-931-4
18	Bushing Retaining Pin	R100B-120	55	Retaining Ball (5/32" diameter steel)	2U-696
19	Nameplate	1702P-301	56	Retaining Sleeve	2U-930-4
	Exhaust Muffler Kit	212-K23	57	Retaining Sleeve Stop	2U-933-4
20	Inlet Bushing Assembly	202-A565		Quick-Change Anvil Assembly (7/16" hex)	1702-A926-7
21	Bushing O-ring	202-103	58	Quick-Change Anvil	1702-926-7
22	Exhaust Deflector	202-23	59	Anvil Body	10A902A5-925
23	Deflector Gasket	202-223	60	Body Lock Pin	10A902A5-936
24	Exhaust Silencer	728-310	61	Thrust Ring Lock	4U-933-7
25	End Plate Gasket	202-739	62	Thrust Ring	4U-932-7
26	Rear Rotor Bearing Retainer	MF-18	63	Retaining Sleeve Spring	4U-931-7
27	Rear Rotor Bearing	401-22	64	Retaining Ball (7/32" diameter steel)	2U-722
28	Rear End Plate	201-12	65	Retaining Sleeve	10A902A5-930
29	Rotor	401-53	*	Tune-up Kit (includes illustrated parts 5[2], 6, 7, 12, 16, 17[2], 21, 23, 24, 25, 26, 27, 30, 34, 43, 46 and 47)	1702P-TK2
30	Vane Packet (set of 6 Vanes)	401-42A-6			
31	Cylinder	401-3			
32	Cylinder Dowel	HH92-74	*	Vertical Hanger	1901-365
33	Front End Plate	201-11	*	Horizontal Hanger	1901-366
34	Front Rotor Bearing	R00H-97	*	Socket Adapter (3/8" to 1/2")	2U-215
35	Hammer Frame Washer	1702-706	*	Quick-Change Chuck for 1/4" hex shank accessories for 7/16" hex shank accessories	2U-A925-4 502-A925-7
36	Hammer	1702-724A			
37	Hammer Frame Assembly	1702-A703A			

* Not Illustrated.

Parts and Maintenance

When the life of the tool has expired, it is recommended that the tool be disassembled, degreased and parts be separated by material so that they can be recycled.

Tool repair and maintenance should only be carried out by an authorized Service Center.

Refer all communications to the nearest **Ingersoll Rand** Office or Distributor.

Related Documentation

For additional information refer to:

Air Impact Wrench Product Safety Information Manual 04580916.

Air Impact Wrench Product Information Manual 03531548.

Manuals can be downloaded from www.ingersollrandproducts.com.

Notes:

Notes:

www.ingersollrandproducts.com

© 2011 *Ingersoll Rand*



Free Manuals Download Website

<http://myh66.com>

<http://usermanuals.us>

<http://www.somanuals.com>

<http://www.4manuals.cc>

<http://www.manual-lib.com>

<http://www.404manual.com>

<http://www.luxmanual.com>

<http://aubethermostatmanual.com>

Golf course search by state

<http://golfingnear.com>

Email search by domain

<http://emailbydomain.com>

Auto manuals search

<http://auto.somanuals.com>

TV manuals search

<http://tv.somanuals.com>