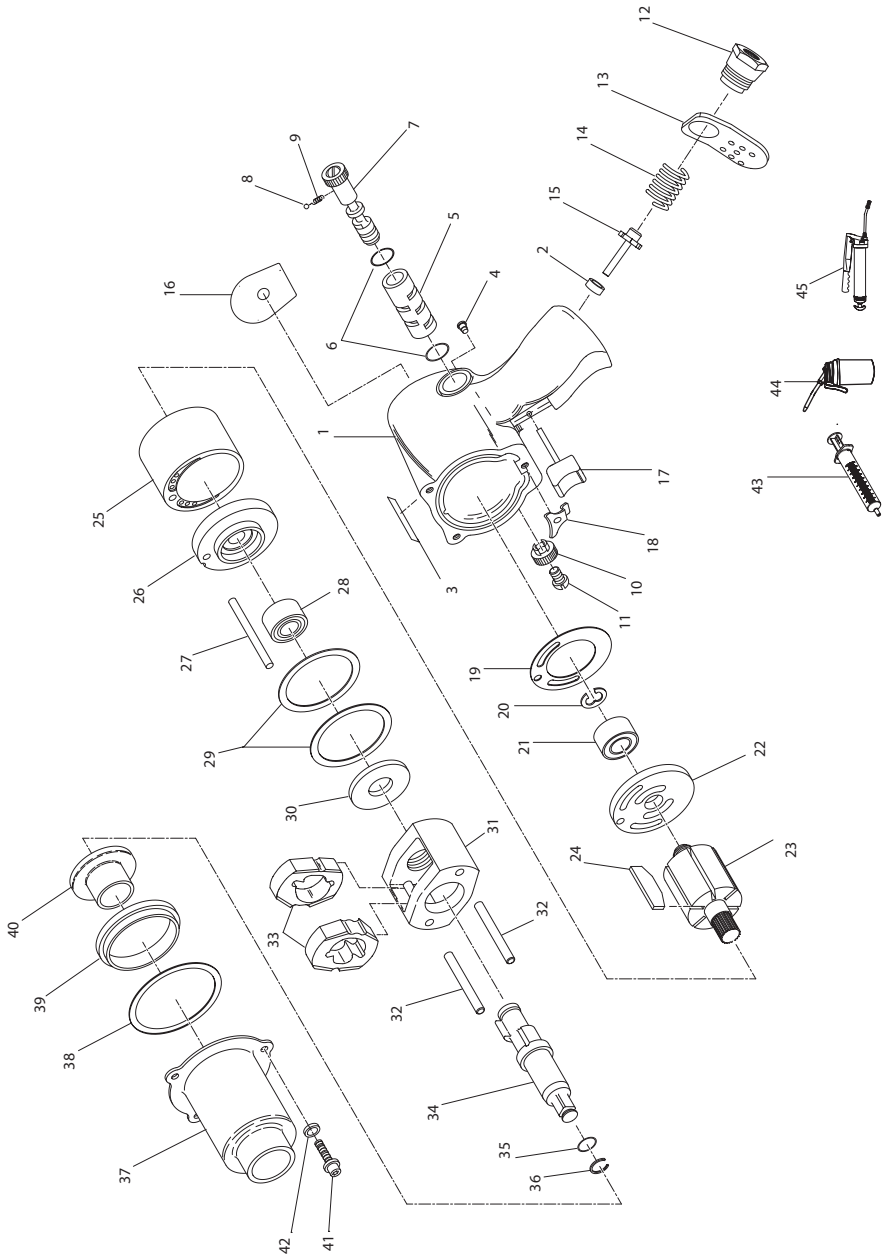


Models 231HA and 231HA-2 Air Impact Wrench - Exploded View



(Dwg. TP1970)



04581286
Edition 3
June 2011

Models 231HA and 231HA-2 Air Impact Wrench - Parts List

Item	Part Description	Part Number	Item	Part Description	Part Number
1	Motor Housing Assembly	231HP-B40	29	Motor Clamp Washer (2)	227-207
2	Throttle Valve Seat	131-303	30	Hammer Frame Washer	231-706
3	Warning Label	WARNING-2-99	31	Hammer Frame Kit	231XP-A703
4	Grease Fitting	130SR-188	32	Hammer Pin (2)	231-704
5	Reverse Valve Bushing Assembly	231-A330	33	Hammer (2)	231XP-724
	Bushing	---	34	Anvil Assembly	
6	Seal	PS3-67		For 231H Model A	231B-A626
7	Reverse Valve	131-329		For 231H-2 Model A (2" Extended Anvil)	231B-A414
8	Reverse Valve Detent Ball	AV1-255	35	Retainer O-Ring	R1A-159
9	Reverse Valve Detent Spring	131-664	36	Socket Retainer	2135-425
10	Reverse Valve Knob	131-666	37	Hammer Case Assembly	131-A927
11	Reverse Valve Screw	231-665	38	Hammer Case Gasket	230-36
12	Inlet Bushing	131-565	39	Hammer Case Pilot	405-800
13	Exhaust Deflector	131-23	40	Hammer Case Bushing	705-941
14	Throttle Valve Spring	231G-51	41	Hammer Case Cap Screw (3)	131-638
15	Throttle Valve	131-50	42	Hammer Case Lock Washer (3)	131-637
16	Nameplate	231HA-301	43	Grease Gun	230-228
17	Trigger	231H-A93	44	Oil	405-M01
18	Trigger Retainer	131-656	45	Grease	105-4T
19	End Plate Gasket	PF800-283	*	Tune Up Kit (includes items 2, 6{2}, 8, 9, 14, 15, 19, 20, 21, 24, 28, 35, 36, and 38)	231HP-TK1
20	Rear Rotor Bearing Retainer	131-118			
21	Rear Rotor Bearing	402-22	*	Hammer Kit (for 231H Model A Standard Length) (includes items 33{2}, 34, 38, 41{3}, and 42{3})	231B-THK1
22	Rear End Plate	131-12			
23	Rotor	231-53			
24	Vane (Set of 6 Vanes)	2131-42-6	*	Hammer Kit (for 231H Model A Extended Length) (includes items 33{2}, 34, 38, 41{3}, and 42{3})	231B-THK2
25	Cylinder	131-3			
26	Front End Plate	131-11			
27	Cylinder Dowel	230-98			
28	Front Rotor Bearing	4U-97			

* Not Shown

Parts and Maintenance

When the life of the tool has expired, it is recommended that the tool be disassembled, degreased and parts be separated by material so that they can be recycled.

Tool repair and maintenance should only be carried out by an authorized Service Center.

Refer all communications to the nearest **Ingersoll Rand** Office or Distributor.

Related Documentation

For additional information refer to:

Air Impact Wrench Product Safety Information Manual 04580916.

Air Impact Wrench Product Information Manual 04584819.

Manuals can be downloaded from www.ingersollrandproducts.com



Free Manuals Download Website

<http://myh66.com>

<http://usermanuals.us>

<http://www.somanuals.com>

<http://www.4manuals.cc>

<http://www.manual-lib.com>

<http://www.404manual.com>

<http://www.luxmanual.com>

<http://aubethermostatmanual.com>

Golf course search by state

<http://golfingnear.com>

Email search by domain

<http://emailbydomain.com>

Auto manuals search

<http://auto.somanuals.com>

TV manuals search

<http://tv.somanuals.com>