



16574550
Edition 1
January 2006

Air Screwdrivers

1R Series

Parts Information



Save These Instructions



1R Screwdriver Motor Housing Assemblies Parts List

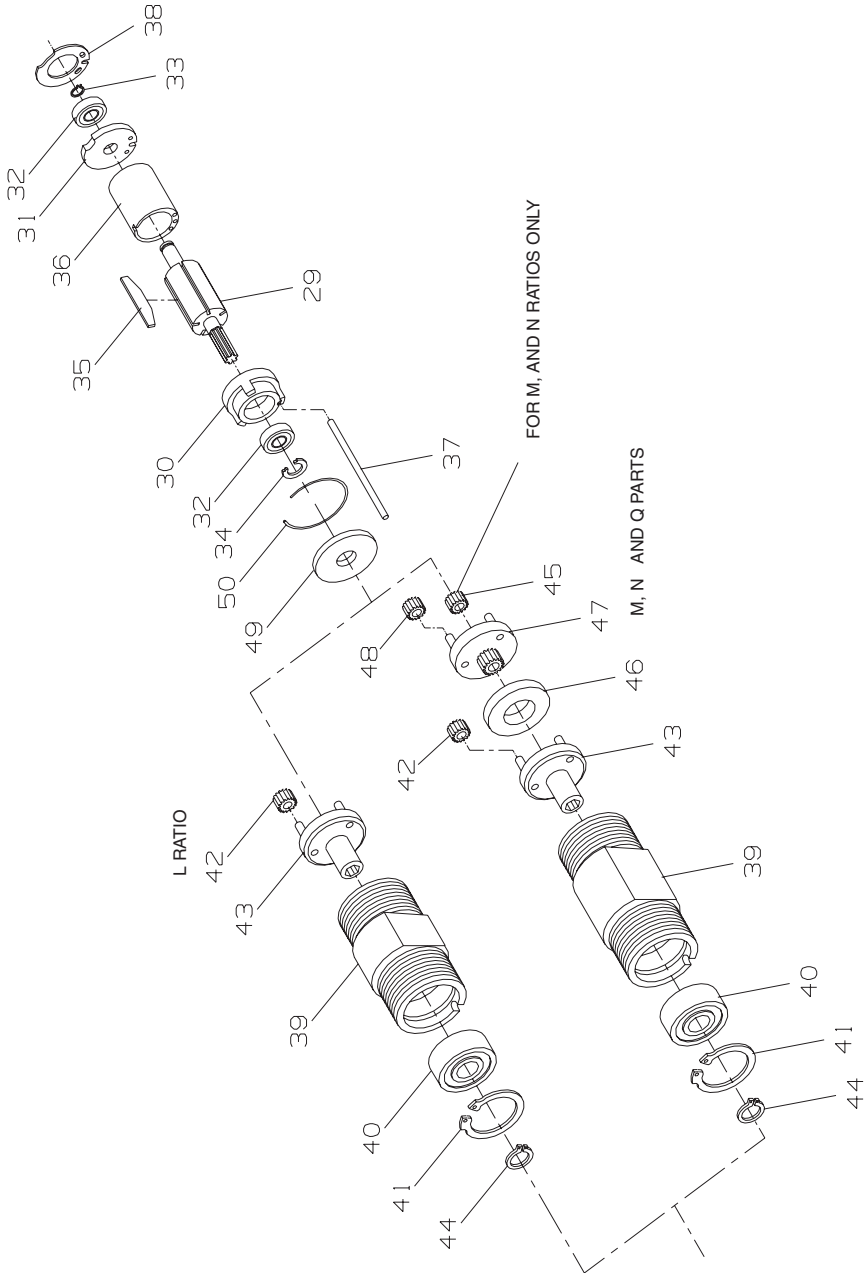
| Item | Part Description | Part Number | Item | Part Description | Part Number |
|-------|--|-------------|--------|--|--------------------|
| | Motor Housing Assembly | | | (for 1RL Models ending in S1 or S3) | 3RL-510 |
| | for 1RA models | 3RA-EU-A40 | 13F | Throttle Valve Housing Cap Screw Lock Washer (4) (for 1RL Models ending in S1 or S3) | 3RL-511 |
| | for 1RL models ending in C1-, C3-, 9D- or D1- | 3RL-EU-A40 | | | |
| | for 1RL models ending in S1- or S3- | 3RLS-EU-A40 | 13G | Throttle Ball (for 1RL Models ending in S1 or S3) | 8U-722 |
| | for 1RP models | 3RP-EU-A40 | 13H | Throttle Ball Spring (for 1RL Models ending in S1 or S3) | 3RP-51 |
| | for 1RT models | 3RT-EU-A40 | | | |
| 1 | Motor Housing | | † 14 | Throttle Ball Spring | |
| | for 1RA and 1RT models | 3RA-EU-B40 | | for 1RP Models | 3RP-51 |
| | for 1RL models ending in C1-, C3-, 9D- or D1- | 3RL-EU-B40 | | for 1RT Models | 3RT-51 |
| | for 1RL models ending in S1- or S3- | 3RLS-EU-B40 | * 15 | Throttle Ball (for 1RP and 1RT Models) | 8U-722 |
| | for 1RP models | 3RP-EU-B40 | †* 16 | Housing Seal (for 1RA and 1RT Models) | 3RL-210 |
| | | | †* 17 | Muffler Element | |
| 1A | Valve Housing Alignment Pin (for 1RL Models ending in S1 or S3) | 3RL-15 | | for 1RA and 1RT Models (for 1RL and 1RP Models (4)) | 3RA-310 3RL-311 |
| 2 | Reverse Valve | 3RL-329 | 18 | Muffler Assembly (for 1RA and 1RT Models) | 3RA-A123 |
| * 2A | Reverse Valve Seal | WFS182-307 | †* 18A | Muffler O-Ring | 85H-167 |
| * 3 | Reverse Valve Spring | SPA102R-515 | †* 18B | Exhaust Deflector Seal (for 1RL and 1RP Models) | 3RL-210 |
| * 4 | Valve Lock Pin | SPA102R-667 | 19 | Exhaust Deflector (for 1RP Models) | 3RP-23 |
| * 5 | Retainer Setscrew | SPA102R-669 | | | |
| * 6 | Lock Pin Retainer | 3RL-668 | | Exhaust Deflector Assembly (for 1RL Models) | 3RL-A23 |
| 6A | Throttle Valve Housing (for 1RL Models ending in S1 or S3) | 3RL-503 | 20 | Exhaust Deflector | 3RL-23 |
| †* 7 | Throttle Valve Spring | | 21 | Throttle Lever Pin (2) | 3RL-120 |
| | for 1RA and 1RT Models | 3RA-51 | 22 | Throttle Lever | 3RL-273 |
| | for 1RL Models | 3RL-51 | * 23 | Trigger Assembly (for 1RA and 1RT Models) | 3RA-A93 |
| † 8 | Throttle Valve (for 1RA and 1RT Models) | 7RAK-302 | †* 23A | Trigger Pin Seal | 8SL-259 |
| †* 9 | Valve Seat (for 1RA and 1RT Models) | 7RAK-303 | 24 | Back Cap Assembly (for 1RA and 1RT Models) | 3RA-A202 |
| 10 | Valve Seat Support (for 1RA and 1RT Models) | 7RAK-304 | †* 24A | Back Cap O-Ring | AF120-290 |
| 11 | Throttle Valve Plunger (for 1RL Models) | 3RL-302 | † 25 | Inlet Screen (for 1RA and 1RT Models) | R0A2-61 |
| 12 | Throttle Valve Cap (for 1RL Models) | 3RL-266 | 26 | Inlet Bushing (for 1RA and 1RT Models) | 3RA-465 |
| * 13 | Throttle Valve Ball (for 1RL Models) | 4U-722 | | | |
| 13A | Throttle Valve Housing Adapter (for 1RL Models ending in S1 or S3) | 3RL-502 | 27 | Inlet Bushing Spacer (for 1RA and 1RT Models) | 3RA-65 |
| * 13B | Throttle Valve Housing Adapter Seal (for 1RL Models ending in S1 or S3) | PS3-67 | 28 | Inlet Bushing Assembly (for 1RL and 1RP Models) | 3RL-A465 |
| 13C | Exhaust Deflector Alignment Pin (for 1RL Models ending in S1 or S3) | 3RL-15 | † 28A | Inlet Screen | 3RL-61 |
| | | | * | Warning Label | WARNING-28-99 |
| 13D | Throttle Valve Housing Seal (for 1RL Models ending in S1 or S3) | 3RL-210 | 28B | Seat (for 1RL Models ending in S1 or S3 and all 1RA and 1RT Models) | 3RP-303 |
| 13E | Throttle Valve Housing Cap Screw (4) | | 28C | Nameplate | 04725032 |

* Not illustrated.

• To keep downtime to a minimum, it is desirable to have on hand certain repair parts. We recommend that you stock one (pair or set) of each part indicated by a bullet (•) for every four tools in service.

† Indicates Tune-up Kit part.

1R Motor and Gearing Exploded Diagram



(Dwg. TPA1858)

1R Motor and Gearing Parts List

| Item | Part Description | Part Number | Item | Part Description | Part Number |
|------|---|-------------|------|--|-------------|
| 29 | Rotor | | | for M ratio | 3RLM-108 |
| | for 1RP and 1RT Models and 1RL Models ending in S1 or S3 | 3RP-53 | | for N or Q ratios | 3RLN-108 |
| | for 1RA Models and 1RL Models ending in C1, C3, 9D or D1 | 3RL-53 | 44 | Spindle Retaining Ring | 3RL-6 |
| | | | 45 | Rotor Pinion (for M, N or P ratios) | 3RLM-17 |
| 30 | Front End Plate | 3RL-11 | 46 | Gear Head Spacer (for M, N and Q ratios) | 3RL-80 |
| | | | 47 | Gear Head | |
| 31 | Rear End Plate | | | for M ratio | 3RLM-216 |
| | for 1RP, 1RT, 1RA and 1RL Models | 3RL-12 | | for N and P ratios | 3RLN-216 |
| | for 1RP and 1RTP Models | 3RPP-12 | | for Q ratio | 3RLQ-216 |
| † 32 | Rotor Bearing (2) | DG10-22 | | for M, N and ratios (14 teeth) | 3RLM-10 |
| † | Rear Rotor Bearing Retainer | 8SL-305 | | for Q ratio (19 teeth) | 3RLN-10 |
| † | Front Rotor Bearing Retainer | 3RL-13 | 49 | Motor Clamp Washer | 3RL-207 |
| † | Vane Packet (set of 5 Vanes) | 3RL-42-5 | 50 | Clamp Washer Retaining Ring | 3RL-208 |
| 36 | Cylinder | 3RL-3 | * | Suspension Bail (for Models 1RL and 1RP) | 7L-365 |
| 37 | Cylinder Dowel | 3RL-98 | * | Hanger (for Models 1RA and 1RT) | 3RA-365 |
| † 38 | Rear End Plate Gasket | 3RL-739 | * | Hand Grip (for Models 1RL and 1RP) | 3RP-747 |
| 39 | Gear Case Assembly | | * | Exhaust Hose (for Models 1RL and 1RP) | 3RL-284 |
| | for L ratio | 3RLL-A37 | | Tune-up Kit for 1RA and 1RT Models (includes illustrated parts 7, 8, 9, 14, 16, 17, 18A, 23A, 24A, 25, 32, 33, 34, 35 and 38) | 3RA-TK2 |
| | for M, N and Q ratios | 3RLM-A37 | | Tune-up Kit for 1RL and 1RP Models (includes illustrated parts 7, 14, 17, 18B, 28A, 32, 33, 34, 35, and 38) | 3RL-TK2 |
| 40 | Spindle Bearing | R00A-510 | * | Inlet Bushing (1/4" NPT) (for 1RL and 1RP Models only) | 3RL-565 |
| 41 | Spindle Bearing Retainer | 3RL-28 | | | |
| 42 | Spindle Planet Gear (3) | | | | |
| | for L ratio (19 teeth) | 3RLL-10 | | | |
| | for M ratio (14 teeth) | 3RLM-10 | | | |
| | for N and Q ratios (17 teeth) | 3RLN-10 | | | |
| 43 | Spindle | | | | |
| | for L ratio | 3RLL-108 | | | |

* Not illustrated.

† To keep downtime to a minimum, it is desirable to have on hand certain repair parts. We recommend that you stock one (pair or set) of each part indicated by a bullet (†) for every four tools in service.

† Indicates Tune-up Kit part.

1R Adjustable Cushion Clutch and Adjustable Shutoff Clutch Parts List

| Item | Part Description | For 1RA or 1RL Models Ending in C1 or C3 | | For 1RL, 1RP or 1RT Models Ending in S1 or S3 | |
|--------|--|---|------------|---|------------|
| | | 3C1 | 3C3 | 3S1 | 3S3 |
| | Adjustable Clutch Attachment (with light clutch spring) | | | | |
| 100 | Clutch Housing Assembly | 3C1-A580A | 3S3-A580 | 3C1-A580A | 3S3-A580 |
| 101 | Clutch Housing Bushing | 3C1-781 | 3S3-781 | 3C1-781 | 3S3-781 |
| 102 | Adjusting Hole Cover | 3S3-415 | 3S3-415 | 3S3-415 | 3S3-415 |
| 103 | Finder Retaining Spring | --- | 102A60-628 | --- | 102A60-628 |
| * 104 | Clutch Return Spring | --- | --- | 3S3-405 | 3S3-405 |
| | Clutch Driver Assembly (with light clutch spring) | 3C1-A581 | 3C1-A581 | 3S1-A581 | 3S3-A581 |
| * 105 | Clutch Spring | | | | |
| | Light (Black) | 3S3-L583 | 3S3-L583 | 3S3-L583 | 3S3-L583 |
| | Medium (Yellow) | 3S3-M583 | 3S3-M583 | 3S3-M583 | 3S3-M583 |
| | Heavy (Green) | 3S3-H583 | 3S3-H583 | 3S3-H583 | 3S3-H583 |
| 106 | Clutch Driver | 3C1-581 | 3C3-581 | 3S3-581 | 3S3-581 |
| * 106A | Clutch Driver Seal | --- | --- | R0BRIC-283 | R0BRIC-283 |
| 106B | Clutch Driver Spacer | --- | --- | 3S1-211 | --- |
| 107 | Clutch Jaw | 3C1-589 | 3C1-589 | --- | --- |
| * 108 | Clutch Ball (11) (1/8" diameter) | AV1-255 | AV1-255 | --- | --- |
| * 109 | Jaw Bearing Ball (10) (1/8" diameter) | AV1-255 | AV1-255 | --- | --- |
| 110 | Clutch Ball Spacer | 3C1-401 | 3C1-401 | --- | --- |
| * 111 | Clutch Ball Seat | 3C1-627 | 3C1-627 | 3S3-627 | 3S3-627 |
| * 112 | Thrust Bearing | 161A32-105 | 161A32-105 | 161A32-105 | 161A32-105 |
| 113 | Clutch Spring Seat | 3C1-623 | 3C1-623 | 3C1-623 | 3C1-623 |
| 114 | Spring Seat Stop (3 for 3C1 or 3C3; 2 for 3S1 or 3S3 Clutch) | 3S3-701 | 3S3-701 | 3S3-701 | 3S3-701 |
| 115 | Adjusting Nut Lock | 3S3-588 | 3S3-588 | 3S3-588 | 3S3-588 |
| 116 | Adjusting Nut | 3S3-582 | 3S3-582 | 3S3-582 | 3S3-582 |
| 117 | Ball Retaining Ring | --- | --- | 3S3-625 | 3S3-625 |
| 118 | Shutoff Collar | --- | --- | 3S3-402 | 3S3-402 |
| * 119 | Collar Return Spring | --- | --- | 3S3-407 | 3S3-407 |
| 120 | Shutoff Plunger | --- | --- | 3S3-408 | 3S3-408 |
| * 121 | Shutoff Plunger Ball (4) (3/32" diameter) | --- | --- | R000B-263 | R000B-263 |
| 122 | Plunger Return Spring | --- | --- | 3S3-420 | 3S3-420 |
| * 123 | Clutch Cam Ball (3) (1/4" diameter) | --- | --- | 4U-722 | 4U-722 |
| * 124 | Bit Holder Bearing Ball (10) (1/8" diameter) | --- | --- | AV1-255 | AV1-255 |
| 125 | Bit Holder Assembly | --- | 3C3-A586 | --- | 3S3-A586 |
| 126 | Bit Retaining Spring | --- | 3S3-241 | --- | 3S3-241 |
| 127 | Bit Retaining Ball | --- | R000B-263 | --- | R000B-263 |
| 128 | Bit Holder | 3C1-586 | --- | 3S1-586 # | --- |
| 129 | Retaining Sleeve Spring | 5C1-931-4 | --- | 5C1-931-4 | --- |
| 129A | Sleeve Spring Retainer (Blue) | 5C1-853 | --- | 5C1-853 | --- |
| 130 | Bit Retaining Sleeve | 5C1-930-4 | --- | 5C1-930-4 | --- |
| 131 | Bit Retaining Ball (9/64" diameter) | RX1-629 | --- | RX1-629 | --- |
| 132 | Bit Retaining Sleeve Stop | 5C1-729 | --- | 5C1-729 | --- |
| 133 | Disengaging Spring | 3S3-420 | 3S3-420 | --- | --- |
| 134 | Finder Spring | --- | 102A60-242 | --- | 102A60-242 |
| 135 | Push Rod | --- | --- | 3RP-435 | 3RP-435 |
| * | Clutch Adjusting Key | 5C1-416 | 5C1-416 | 5C1-416 | 5C1-416 |
| * | Bit Guide (Available for Models ending in C3 or S3) | --- | 5RA-69 † | --- | 5RA-69 † |

* Not illustrated.

* To keep downtime to a minimum, it is desirable to have on hand certain repair parts. We recommend that you stock one (pair or set) of each part indicated by a bullet (*) for every four tools in service.

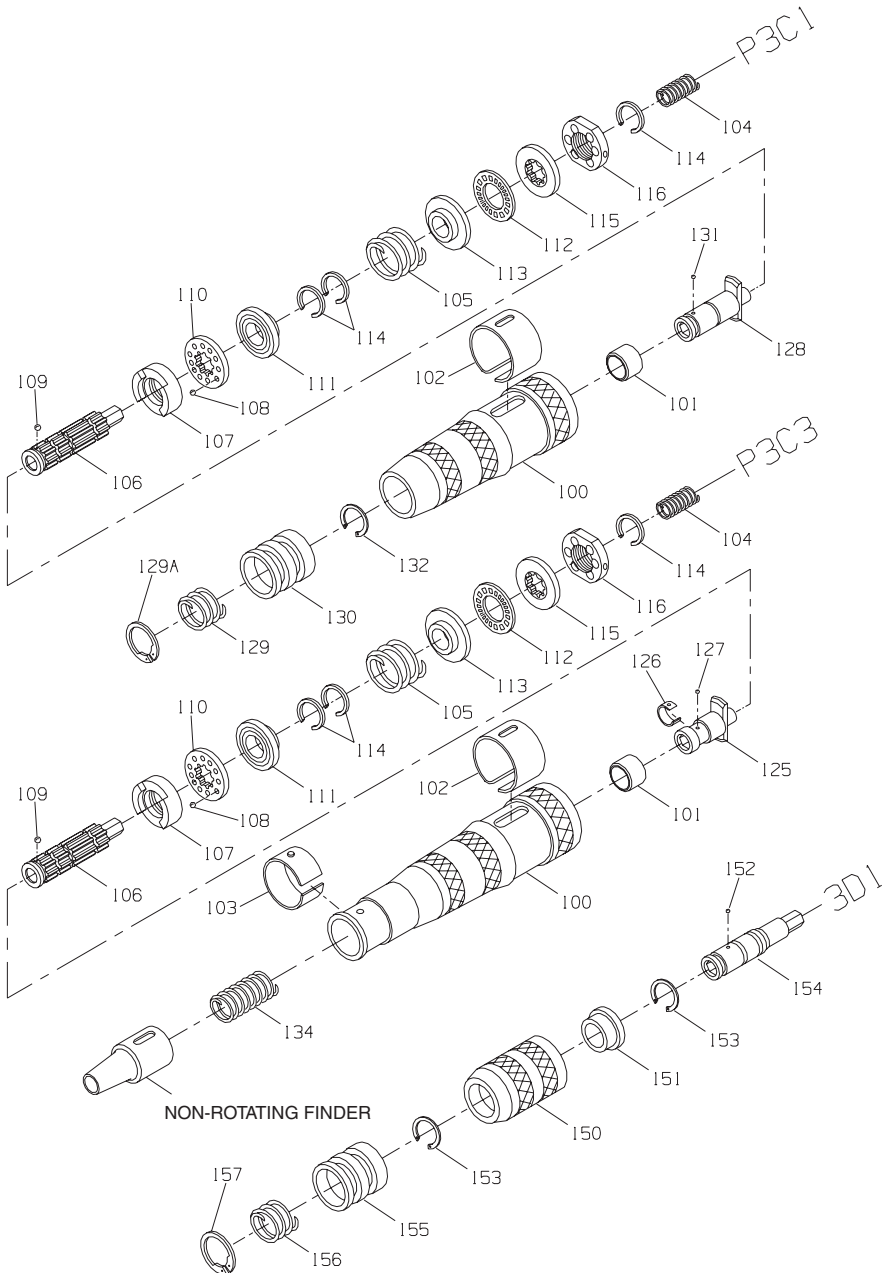
† Bit Guide No. 5RA-69 is available for 1RA Models ending in C3 or S3 and Models 1RLMC3 and 1RLNC3. It is available for 1RP and 1RT Models ending

in S3 and Models 1RLC3, 1RPMC3 and 1RPNC3.

▣ Bit Holder Assembly No. 3S3-586 is included with Clutch Driver Assembly No. 3S3-A581.

Bit Holder No. 3S1-586 is included with Clutch Driver Assembly No. 3S1-A581.

1R Adjustable Cushion Clutch and Direct Drive Attachments Exploded Diagram



(Dwg. TPA1860)

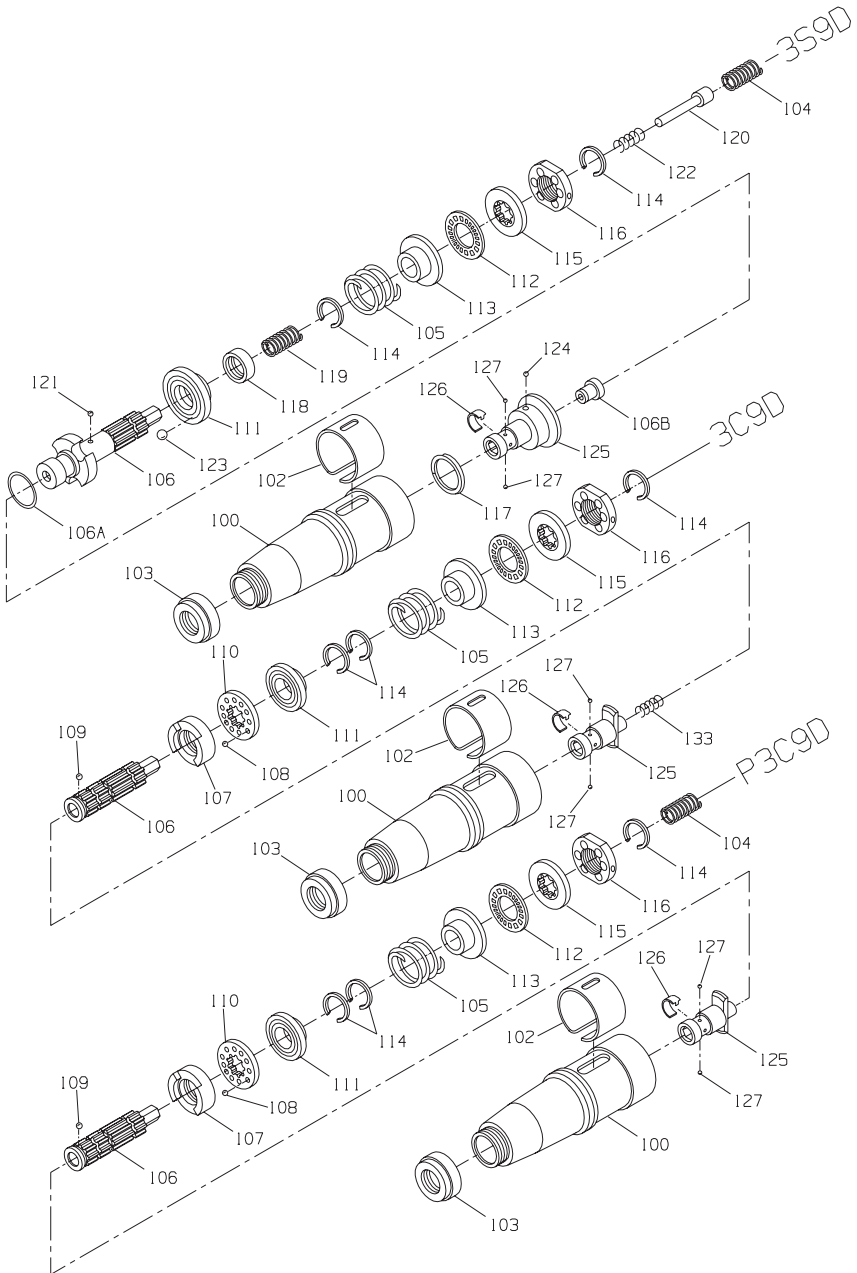
1R Adjustable Cushion Clutch and Direct Drive Attachments Parts List

| Item | Part Description | For 1RP Models Ending in C1 or C3 | | For Models Ending in D1 |
|-------|---|--------------------------------------|------------|----------------------------|
| | | P3C1 | P3C3 | --- |
| | Adjustable Clutch Attachment (with light clutch spring) | | | --- |
| 100 | Clutch Housing Assembly | 3C1-A580A | 3S3-A580A | --- |
| 101 | Clutch Housing Bushing | 3C1-781 | 3S3-781 | --- |
| 102 | Adjusting Hole Cover | 3S3-415 | 3S3-415 | --- |
| 103 | Finder Retaining Spring | --- | 102A60-628 | --- |
| • 104 | Clutch Return Spring | 3S3-405 | 3S3-405 | --- |
| | Clutch Driver Assembly (with light clutch spring) | 3C1-A581 | 3C1-A581 | --- |
| • 105 | Clutch Spring | | | |
| | Light (Black) | 3S3-L583 | 3S3-L583 | --- |
| | Medium (Yellow) | 3S3-M583 | 3S3-M583 | --- |
| | Heavy (Green) | 3S3-H583 | 3S3-H583 | --- |
| 106 | Clutch Driver | 3C1-581 | 3C1-581 | --- |
| 107 | Clutch Jaw | 3C1-589 | 3C1-589 | --- |
| • 108 | Clutch Ball (11) (1/8" diameter) | AV1-255 | AV1-255 | --- |
| • 109 | Jaw Bearing Ball (10) (1/8" diameter) | AV1-255 | AV1-255 | --- |
| 110 | Clutch Ball Spacer | 3C1-401 | 3C1-401 | --- |
| • 111 | Clutch Ball Seat | 3C1-627 | 3C1-627 | --- |
| • 112 | Thrust Bearing | 161A32-105 | 161A32-105 | --- |
| 113 | Clutch Spring Seat | 3C1-623 | 3C1-623 | --- |
| 114 | Spring Seat Stop (3) | 3S3-701 | 3S3-701 | --- |
| 115 | Adjusting Nut Lock | 3S3-588 | 3S3-588 | --- |
| 116 | Adjusting Nut | 3S3-582 | 3S3-582 | --- |
| 125 | Bit Holder Assembly | --- | 3C3-A586 | --- |
| 126 | Bit Retaining Spring | --- | 3S3-241 | --- |
| 127 | Bit Retaining Ball | --- | R000B-263 | --- |
| 128 | Bit Holder | 3C1-586 | --- | --- |
| 129 | Retaining Sleeve Spring | 5C1-931-4 | --- | --- |
| 129A | Sleeve Spring Retainer (Blue) | 5C1-853 | --- | --- |
| 130 | Bit Retaining Sleeve | 5C1-930-4 | --- | --- |
| 131 | Bit Retaining Ball (9/64" diameter) | RX1-629 | --- | --- |
| 132 | Bit Retaining Sleeve Stop | 5C1-729 | --- | --- |
| 134 | Finder Spring | --- | 102A60-242 | --- |
| 135 | Push Rod | 3RP-435 | 3RP-435 | --- |
| * | Clutch Adjusting Key | 5C1-416 | 5C1-416 | --- |
| | Direct Drive Attachment | --- | --- | 3D1 |
| 150 | Screwdriver Housing Assembly | --- | --- | 3D1-A580 |
| 151 | Housing Bushing | --- | --- | 3D1-781 |
| 152 | Bit Retaining Ball | --- | --- | RX1-629 |
| 153 | Bit Holder Retaining Ring (2) | --- | --- | 5C1-729 |
| 154 | Bit Holder | --- | --- | 3D1-786 |
| 155 | Bit Retaining Sleeve | --- | --- | 5C1-930-4 |
| 156 | Retaining Sleeve Spring | --- | --- | 5C1-931-4 |
| 157 | Sleeve Spring Retainer (Blue) | --- | --- | 5C1-853 |

* Not illustrated.

• To keep downtime to a minimum, it is desirable to have on hand certain repair parts. We recommend that you stock one (pair or set) of each part indicated by a bullet (•) for every four tools in service.

1R Clutches For 5/16" Hexagon Shank European Style Bits Exploded Diagram



(Dwg. TPA1861)

1R Clutches For 5/16" Hexagon Shank European Style Bits Parts List

| Item | Part Description | For 1RA or 1RL Models Ending in C9D | For 1RP or 1RT Models Ending in S9D | For 1RP or Models Ending in C9D |
|-------|---|-------------------------------------|-------------------------------------|---------------------------------|
| | Adjustable Clutch Attachment (with Light Clutch Spring) | 3C9D | 3S9D | P3C9D |
| 100 | Clutch Housing Assembly | 3C9D-A580 | 3C9D-A580 | 3C9D-A580 |
| 102 | Adjusting Hole Cover | 3S3-415 | 3S3-415 | 3S3-415 |
| 103 | Clutch Housing Cap | 3C9D-19 | 3C9D-19 | 3C9D-19 |
| • 104 | Clutch Return Spring | --- | 3S3-405 | 3S3-405 |
| | Clutch Driver Assembly (with light clutch spring) | 3C1-A581 | 3S9D-A581 | 3C1-A581 |
| • 105 | Clutch Spring | | | |
| | Light (Black) | 3S3-L583 | 3S3-L583 | 3S3-L583 |
| | Medium (Yellow) | 3S3-M583 | 3S3-M583 | 3S3-M583 |
| | Heavy (Green) | 3S3-H583 | 3S3-H583 | 3S3-H583 |
| 106 | Clutch Driver | 3C1-581 | 3S3-581 | 3C1-581 |
| 106A | Clutch Driver Seal | --- | ROBR1C-283 | --- |
| 106B | Clutch Driver Spacer | --- | 3S9D-211 | --- |
| 107 | Clutch Jaw | 3C1-589 | --- | 3C1-589 |
| • 108 | Clutch Ball (11) (1/8" diameter) | AV1-255 | --- | AV1-255 |
| • 109 | Jaw Bearing Ball (10) (1/8" diameter) | AV1-255 | --- | AV1-255 |
| 110 | Clutch Ball Spacer | 3C1-401 | --- | 3C1-401 |
| • 111 | Clutch Ball Seat | 3C1-627 | 3S3-627 | 3C1-627 |
| • 112 | Thrust Bearing | 161A32-105 | 161A32-105 | 161A32-105 |
| 113 | Clutch Spring Seat | 3C1-623 | 3C1-623 | 3C1-623 |
| 114 | Spring Seat Stop (3 for 3C9D and P3C9D; 2 for 3S9D) | 3S3-701 | 3S3-701 | 3S3-701 |
| 115 | Adjusting Nut Lock | 3S3-588 | 3S3-588 | 3S3-588 |
| 116 | Adjusting Nut | 3S3-582 | 3S3-582 | 3S3-582 |
| 117 | Ball Retaining Spring | --- | 3S3-625 | --- |
| 118 | Shutoff Collar | --- | 3S3-402 | --- |
| • 119 | Collar Return Spring | --- | 3S3-407 | --- |
| 120 | Shutoff Plunger | --- | 3S3-408 | --- |
| • 121 | Shutoff Plunger Ball (4) (3/32" diameter) | --- | R000B-263 | --- |
| 122 | Plunger Return Spring | --- | 3S3-420 | --- |
| • 123 | Clutch Cam Ball (3) (1/4" diameter) | --- | 4U-722 | --- |
| • 124 | Bit Holder Bearing Ball (10) (1/8" diameter) | --- | AV1-255 | --- |
| 125 | Bit Holder Assembly | 3C9D-A586 | 3S9D-A586 # | 3C9D-A586 |
| 126 | Bit Retaining Spring | 3C9D-241 | 3C9D-241 | 3C9D-241 |
| 127 | Bit Retaining Ball | AV1-255 | AV1-255 | AV1-255 |
| • 133 | Disengaging Spring | 3S3-420 | --- | --- |
| 135 | Push Rod | --- | 3RP-435 | 3RP-435 |
| * | Clutch Adjusting Key | 5C1-416 | 5C1-416 | 5C1-416 |

* Not illustrated.

• To keep downtime to a minimum, it is desirable to have on hand certain repair parts. We recommend that you stock one (pair or set) of each part indicated by a bullet (•) for every four tools in service.

Bit Holder Assembly No. 3S9D-A586 is included with Clutch Driver Assembly No. 3S9D-A581.

Clutch Spring Selection Chart

| Model | Torque Range (Soft Draw) | | |
|---------|---------------------------------|---------------------------------|---------------------------------|
| | Light Clutch Spring (Black) | Medium Clutch Spring (Yellow) | Heavy Clutch Spring (Green) |
| 1RALC1 | 3.5 to 13 in-lb (.39 to 1.5 Nm) | --- | --- |
| 1RALC3 | 3.5 to 13 in-lb (.39 to 1.5 Nm) | --- | --- |
| 1RAMC1 | 2.5 to 16 in-lb (.28 to 1.8 Nm) | 3.0 to 20 in-lb (.34 to 2.3 Nm) | --- |
| 1RAMC3 | 2.5 to 16 in-lb (.28 to 1.8 Nm) | 3.0 to 20 in-lb (.34 to 2.3 Nm) | --- |
| 1RANC1 | 1.5 to 16 in-lb (.17 to 1.8 Nm) | 2.5 to 23 in-lb (.28 to 2.6 Nm) | 5.0 to 30 in-lb (.56 to 3.4 Nm) |
| 1RANC3 | 1.5 to 16 in-lb (.17 to 1.8 Nm) | 2.5 to 23 in-lb (.28 to 2.6 Nm) | 5.0 to 30 in-lb (.56 to 3.4 Nm) |
| 1RAQC1 | --- | --- | 5.0 to 45 in-lb (.56 to 5.1 Nm) |
| 1RLLC1 | 3.5 to 13 in-lb (.39 to 1.5 Nm) | --- | --- |
| 1RLLC3 | 3.5 to 13 in-lb (.39 to 1.5 Nm) | --- | --- |
| 1RLMC1 | 2.5 to 16 in-lb (.28 to 1.8 Nm) | 3.0 to 20 in-lb (.34 to 2.3 Nm) | --- |
| 1RLMC3 | 2.5 to 16 in-lb (.28 to 1.8 Nm) | 3.0 to 20 in-lb (.34 to 2.3 Nm) | --- |
| 1RLNC1 | 1.5 to 16 in-lb (.17 to 1.8 Nm) | 2.5 to 23 in-lb (.28 to 2.6 Nm) | 5.0 to 30 in-lb (.56 to 3.4 Nm) |
| 1RLNC3 | 1.5 to 16 in-lb (.17 to 1.8 Nm) | 2.5 to 23 in-lb (.28 to 2.6 Nm) | 5.0 to 30 in-lb (.56 to 3.4 Nm) |
| 1RLNS1 | 1.5 to 16 in-lb (.17 to 1.8 Nm) | 2.5 to 23 in-lb (.28 to 2.6 Nm) | 5.0 to 30 in-lb (.56 to 3.4 Nm) |
| 1RLQS1 | --- | --- | 5.0 to 45 in-lb (.56 to 5.1 Nm) |
| 1RLNS3 | 1.5 to 16 in-lb (.17 to 1.8 Nm) | 2.5 to 23 in-lb (.28 to 2.6 Nm) | 5.0 to 30 in-lb (.56 to 3.4 Nm) |
| 1RLQS3 | --- | --- | 5.0 to 45 in-lb (.56 to 5.1 Nm) |
| 1RPLC1 | 3.5 to 13 in-lb (.39 to 1.5 Nm) | --- | --- |
| 1RPLC3 | 3.5 to 13 in-lb (.39 to 1.5 Nm) | --- | --- |
| 1RPMC1 | 2.5 to 16 in-lb (.28 to 1.8 Nm) | 3.0 to 20 in-lb (.34 to 2.3 Nm) | --- |
| 1RPMC3 | 2.5 to 16 in-lb (.28 to 1.8 Nm) | 3.0 to 20 in-lb (.34 to 2.3 Nm) | --- |
| 1RPNC1 | 1.5 to 16 in-lb (.17 to 1.8 Nm) | 2.5 to 23 in-lb (.28 to 2.6 Nm) | 5.0 to 30 in-lb (.56 to 3.4 Nm) |
| 1RPNC3 | 1.5 to 16 in-lb (.17 to 1.8 Nm) | 2.5 to 23 in-lb (.28 to 2.6 Nm) | 5.0 to 30 in-lb (.56 to 3.4 Nm) |
| 1RPLS1 | 3.5 to 13 in-lb (.39 to 1.5 Nm) | --- | --- |
| 1RPMS1 | 2.5 to 16 in-lb (.28 to 1.8 Nm) | 3.0 to 20 in-lb (.34 to 2.3 Nm) | --- |
| 1RPNS1 | 1.5 to 16 in-lb (.17 to 1.8 Nm) | 2.5 to 23 in-lb (.28 to 2.6 Nm) | 5.0 to 30 in-lb (.56 to 3.4 Nm) |
| 1RPPS1 | 1.5 to 16 in-lb (.17 to 1.8 Nm) | 2.5 to 23 in-lb (.28 to 2.6 Nm) | --- |
| 1RPQS1 | --- | --- | 5.0 to 45 in-lb (.56 to 5.1 Nm) |
| 1RTL1 | 3.5 to 13 in-lb (.39 to 1.5 Nm) | --- | --- |
| 1RTMS1 | 2.5 to 16 in-lb (.28 to 1.8 Nm) | 3.0 to 20 in-lb (.34 to 2.3 Nm) | --- |
| 1RTNS1 | 1.5 to 16 in-lb (.17 to 1.8 Nm) | 2.5 to 23 in-lb (.28 to 2.6 Nm) | 5.0 to 30 in-lb (.56 to 3.4 Nm) |
| 1RTPS1 | 1.5 to 16 in-lb (.17 to 1.8 Nm) | 2.5 to 23 in-lb (.28 to 2.6 Nm) | --- |
| 1RTQS1 | --- | --- | 5.0 to 45 in-lb (.56 to 5.1 Nm) |
| 1RPLS3 | 3.5 to 13 in-lb (.39 to 1.5 Nm) | --- | --- |
| 1RPMS3 | 2.5 to 16 in-lb (.28 to 1.8 Nm) | 3.0 to 20 in-lb (.34 to 2.3 Nm) | --- |
| 1RPNS3 | 1.5 to 16 in-lb (.17 to 1.8 Nm) | 2.5 to 23 in-lb (.28 to 2.6 Nm) | 5.0 to 30 in-lb (.56 to 3.4 Nm) |
| 1RPPS3 | 1.5 to 16 in-lb (.17 to 1.8 Nm) | 2.5 to 23 in-lb (.28 to 2.6 Nm) | --- |
| 1RPQS3 | --- | --- | 5.0 to 45 in-lb (.56 to 5.1 Nm) |
| 1RTL3 | 3.5 to 13 in-lb (.39 to 1.5 Nm) | --- | --- |
| 1RTMS3 | 2.5 to 16 in-lb (.28 to 1.8 Nm) | 3.0 to 20 in-lb (.34 to 2.3 Nm) | --- |
| 1RTNS3 | 1.5 to 16 in-lb (.17 to 1.8 Nm) | 2.5 to 23 in-lb (.28 to 2.6 Nm) | 5.0 to 30 in-lb (.56 to 3.4 Nm) |
| 1RTPS3 | 1.5 to 16 in-lb (.17 to 1.8 Nm) | 2.5 to 23 in-lb (.28 to 2.6 Nm) | --- |
| 1RTQS3 | --- | --- | 5.0 to 45 in-lb (.56 to 5.1 Nm) |
| 1RAMC9D | 2.5 to 16 in-lb (.28 to 1.8 Nm) | 3.0 to 20 in-lb (.34 to 2.3 Nm) | --- |
| 1RANC9D | 1.5 to 16 in-lb (.17 to 1.8 Nm) | 2.5 to 23 in-lb (.28 to 2.6 Nm) | 5.0 to 30 in-lb (.56 to 3.4 Nm) |
| 1RLMC9D | 2.5 to 16 in-lb (.28 to 1.8 Nm) | 3.0 to 20 in-lb (.34 to 2.3 Nm) | --- |
| 1RLNC9D | 1.5 to 16 in-lb (.17 to 1.8 Nm) | 2.5 to 23 in-lb (.28 to 2.6 Nm) | 5.0 to 30 in-lb (.56 to 3.4 Nm) |
| 1RPMC9D | 2.5 to 16 in-lb (.28 to 1.8 Nm) | 3.0 to 20 in-lb (.34 to 2.3 Nm) | --- |
| 1RPNC9D | 1.5 to 16 in-lb (.17 to 1.8 Nm) | 2.5 to 23 in-lb (.28 to 2.6 Nm) | 5.0 to 30 in-lb (.56 to 3.4 Nm) |
| 1RPMS9D | 2.5 to 16 in-lb (.28 to 1.8 Nm) | 3.0 to 20 in-lb (.34 to 2.3 Nm) | --- |
| 1RPNS9D | 1.5 to 16 in-lb (.17 to 1.8 Nm) | 2.5 to 23 in-lb (.28 to 2.6 Nm) | 5.0 to 30 in-lb (.56 to 3.4 Nm) |
| 1RPPS9D | 1.5 to 16 in-lb (.17 to 1.8 Nm) | 2.5 to 23 in-lb (.28 to 2.6 Nm) | --- |
| 1RTMS9D | 2.5 to 16 in-lb (.28 to 1.8 Nm) | 3.0 to 20 in-lb (.34 to 2.3 Nm) | --- |
| 1RTNS9D | 1.5 to 16 in-lb (.17 to 1.8 Nm) | 2.5 to 23 in-lb (.28 to 2.6 Nm) | 5.0 to 30 in-lb (.56 to 3.4 Nm) |
| 1RTPS9D | 1.5 to 16 in-lb (.17 to 1.8 Nm) | 2.5 to 23 in-lb (.28 to 2.6 Nm) | --- |

Parts and Maintenance

When the life of the tool has expired, it is recommended that the tool be disassembled, degreased and parts be separated by material so that they can be recycled.

Tool repair and maintenance should only be carried out by an authorized Service Center.
Refer all communications to the nearest **Ingersoll-Rand** Office or Distributor.

Related Documentation

For additional information refer to:

Product Safety Information Manual 04585006.

Product Information Manual 80167265.

Product Maintenance Information Manual 16575243.

Manuals can be downloaded from www.irtools.com.

www.irttools.com

© 2006 Ingersoll-Rand Company



Free Manuals Download Website

<http://myh66.com>

<http://usermanuals.us>

<http://www.somanuals.com>

<http://www.4manuals.cc>

<http://www.manual-lib.com>

<http://www.404manual.com>

<http://www.luxmanual.com>

<http://aubethermostatmanual.com>

Golf course search by state

<http://golfingnear.com>

Email search by domain

<http://emailbydomain.com>

Auto manuals search

<http://auto.somanuals.com>

TV manuals search

<http://tv.somanuals.com>