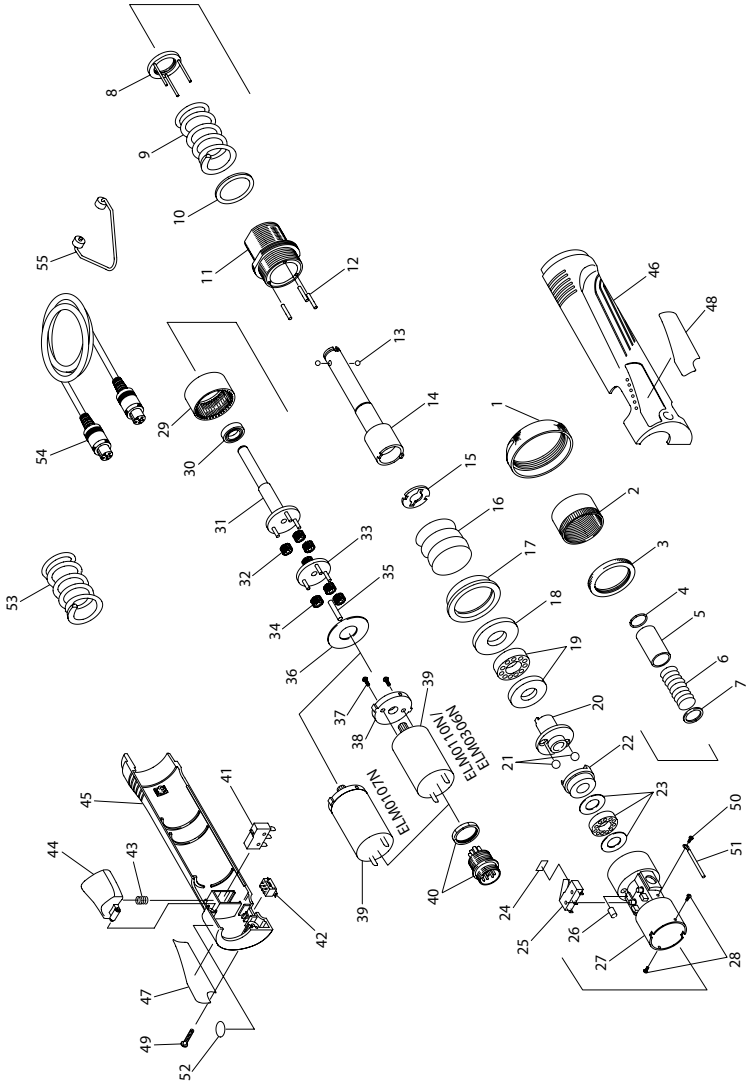


Models ELM0107N, ELM0110N and ELM0306N Micro Electric Screwdrivers Exploded Diagram



(Dwg. 45574605)

Models ELM0107N, ELM0110N and ELM0306N Micro Electric Screwdrivers Parts List

Item	Part Description	Part Number	Item	Part Description	Part Number
1	Coupling	TV03050	32	Idle Gear A (3)	TV03026
2	Spring Adjusting Ring	TV04251	33	Gear Base B Assembly (ELM0107N)	TD02857
3	Rock Nut	TV04255		Gear Base C Assembly (ELM0306N)	TD03381
4	Stop Ring	TV03034		Gear Base D Assembly (ELM0110N)	TD03373
5	Holder Clamp	TV03032	34	Idle Gear A (ELM0107N) (3)	TV03026
6	Holder Spring	TV04256		Idle Gear B (ELM0306N) (3)	TV03745
7	Washer	TV03035		Idle Gear C (ELM0110N) (2)	TV03733
8	Bearing Plate Assembly	TD04101	35	Roller pin 2mm Dia. - 9.8mm Dia.	TV00337
9	Clutch Spring (ELM0107N/0110N)	TV04297	36	Spacer	TV03036
	Clutch Spring for High Torque (ELM0306N)	TV04299	37	Screw (ELM0110N/0306N) (2)	TV01236
10	Washer	TV04259	38	Motor Adapter (ELM0110N/0306N)	TV03046
11	Nose Nut Assembly	TD04098	39	Motor Assembly (ELM0107N)	TD02860
12	Roller pin 2mm Dia. - 13.8mm Dia. (3)	TV00858		Motor Assembly (ELM0306N)	TD03452
13	Steel Ball 1.5mm Dia. (2)	TV03039		Motor Assembly (ELM0110N)	TD03459
14	Bit Holder 1 Assembly	TD04438	40	Receptacle	TD03753
15	BH-Adapter	TV03934	41	Micro Switch	TV00283
16	Pilot Spring	TV04262	42	Change Over Switch	TV03471
17	Spring Guide Ring	TV04261	43	Spring for Trigger	TV00333
18	Ring Plate	TV04260	44	Trigger	TV03909
19	Thrust Bearing	TV03038	45	Frame A	TD03211
20	Bit Holder-B	TV04253	46	Frame B	TD03211
21	Steel Ball 3.5mm Dia. (2)	TV03040	47	Model Label (ELM0107N)	ELM0107N-301
22	Cam	TV03754		Model Label (ELM0110N)	ELM0110N-301
23	Thrust Bearing	TV03037		Model Label (ELM0306N)	ELM0306N-301
24	Sheet	TV04504	48	Warning Label	ELM0107N-99
25	Micro Switch	TV04507	49	Tapping Screw	TV01231
26	Pilot	TV04503	50	Screw	TV01236
27	Gear Case	TV04296	51	Earth Wire Assembly	TD03212
28	Screw (2)	TV01236	52	ESD Seal	TV00870
29	Ring Gear	TV03027	53	Clutch Spring for Low Torque (ELM0107N/0110N)	TV04298
30	Ball Bearing	TV04263	54	Cord Assembly	TD04008
31	Gear Base Assembly	TD04149	55	Lifting Hook Assembly	TD02864

Parts and Maintenance

When the life of the tool has expired, it is recommended that the tool be disassembled, degreased and parts be separated by material so that they can be recycled.

Tool repair and maintenance should only be carried out by an authorized Service Center.

Refer all communications to the nearest **Ingersoll Rand** Office or Distributor.

Related Documentation

For additional information refer to:

Product Safety Information Manual 16573685.

Product Information Manual 45549144.

Maintenance Information Manual 45549177.

Manuals can be downloaded from www.irtools.com.



Free Manuals Download Website

<http://myh66.com>

<http://usermanuals.us>

<http://www.somanuals.com>

<http://www.4manuals.cc>

<http://www.manual-lib.com>

<http://www.404manual.com>

<http://www.luxmanual.com>

<http://aubethermostatmanual.com>

Golf course search by state

<http://golfingnear.com>

Email search by domain

<http://emailbydomain.com>

Auto manuals search

<http://auto.somanuals.com>

TV manuals search

<http://tv.somanuals.com>