

User Guide



Digital Picture Key Chain

**NS-DKEYBK10/
NS-DKEYRD10**



Digital Picture Key Chain

Contents

Introduction	3
Safety information	3
Features	5
Package contents	6
Identifying components	6
Using the key chain	8
Charging the battery	8
Copying photos to the viewer	10
Viewing a slideshow	15
Viewing the clock/calendar	15
Deleting photos	17
Editing photos	19
Setting viewing options	24
Troubleshooting	26
Specifications	26
Legal notices	27
90-day limited warranty	30

Introduction

Congratulations on your purchase of a high-quality Insignia product. Your new digital picture key chain is designed for reliable and trouble-free performance.

Safety information

Always follow these basic safety precautions when using your digital picture key chain. This will reduce the risk of fire, electric shock, and injury.

Warnings

To reduce the risk of fire or shock hazard, do not expose the key chain to rain or moisture.

To prevent the risk of electric shock, do not remove the cover. There are no user-serviceable parts inside. Refer all servicing to qualified personnel.

- **Water and moisture:** Do not use this product near water (for example, near a bathtub, sink, laundry tub, in wet basements, or near a swimming pool).

- **Object and liquid entry:** Never push objects of any kind into this product, through openings or otherwise. This may result in objects touching dangerous voltage points or shorting out parts that could result in a personal injury or property damage, including fire or electric shock. Never spill liquid of any kind on the key chain.
- **Heat:** The key chain should be kept away from heat sources such as radiators, heat registers, stoves, or other products (including amplifiers) that produce heat.
- **Power sources:** This key chain should be recharged and programmed only from a computer's powered USB port.
- **Servicing:** Do not attempt to service this product yourself, because opening or removing covers may expose you to dangerous voltage or other hazards. Refer all servicing to qualified service personnel. Opening or removing covers will also void the product warranty.

- **Safety check:** Upon completion of any service or repairs to this product, ask the service technician to perform safety checks to ensure that the product is in proper operating condition.

Features

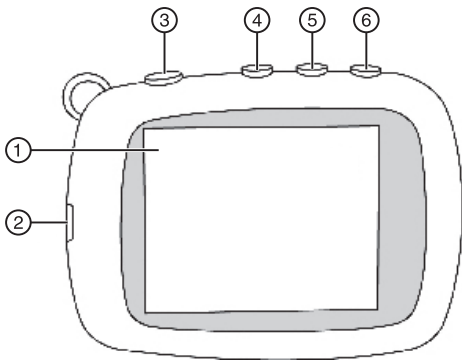
The digital picture key chain includes these key features:






- Displays digital photos (JPEG) in slideshow or static mode
- Connects to a computer to transfer your photos
- Built-in application software for photo editing
- Clock/calendar display mode
- Auto power-off to save the battery
- Bright TFT LCD screen
- Internal memory for up to 40 pictures
- Key chain holder

Package contents

- Digital photo viewer
- Key chain
- Mini USB cable
- User Guide

Identifying components



Item	Description
1	LCD display screen
2	 Mini USB Port—Connect to your computer to transfer pictures to the key chain and to charge the battery.
3	 Power/Menu—Press and hold to turn the key chain on or off. Press and release to enter the Options menu.
4	 Reverse—Press to move the menu selection left or to display the previous photo.
5	 Play/Pause—Press to select menu items. During a slideshow, press to pause or resume.
6	 Forward—Press to move the menu selection right or to display the next photo.

Using the key chain

You can use your key chain to:

- Play a slideshow of photos
- Display a single photo
- Change display settings

Caution

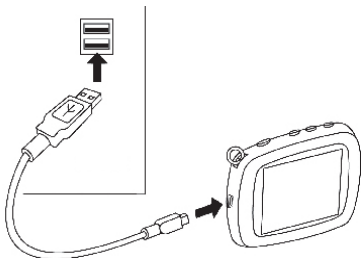
You should make sure that the key chain's battery is fully charged before using it for the first time. Use a USB port on your computer (or on a hub connected to a power adapter) to charge the battery.

Charging the battery

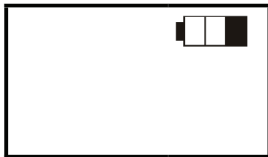
You must charge the battery before using the key chain.

To charge the key chain's battery:



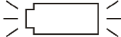
- 1** Connect the smaller plug of the supplied USB cable to the key chain's USB port, then connect the larger plug to your computer's USB port.



The battery charging indicator appears on the LCD.



The battery indicator shows the status of the battery charging process. Leave the key chain connected until the battery indicator shows that the battery is fully charged.

Item	Description
	Animated icon—The battery is being charged.
	Solid icon—The battery is fully charged.
	Blinking icon— The battery is low and requires charging.

Copying photos to the viewer

To copy photos from your computer to the key chain:

Note

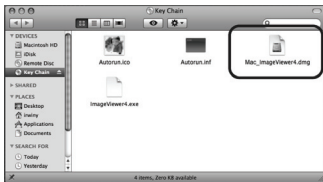
The key chain's built-in software supports Windows® 7, Windows® Vista, Windows® XP, and Mac OS® X v10.4/10.5. One of these operating systems is required to transfer photos.

- 1 Connect the smaller plug of the supplied USB cable to the key chain's USB port, then connect the larger plug to your computer's USB port. A "Connecting..." message appears on the key chain's display.



For Mac OS X systems only:

- a Click **Key Chain CD** on the Main screen to open the device. The following screen appears:



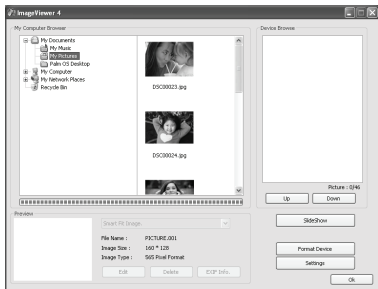
- b** Click **Mac_ImageViewer4.dmg** to open the install window.



- c** Click **ImageViewer4** to install the software for transferring photos. The program starts automatically the next time the key chain is plugged in.

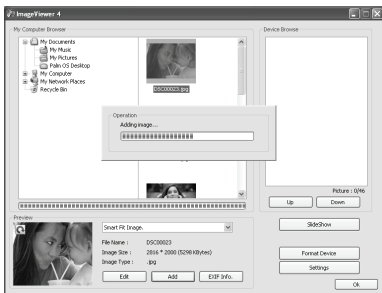
To check for updates available online, click **insigniaproducts.webloc**.

The photo viewer program screen opens.
(Windows version shown)



- 2 On the left side of the screen, click the folder that you want to copy photos from. Thumbnail images of the photos are shown in the *My Computer Browser* window.
- 3 Click the thumbnail images of the photos you want to copy to the key chain. Hold down **Shift** or **Ctrl** to select multiple images.

- 4 After you've selected the images you wish to copy, click **Add** to begin transferring the images to the key chain.



The photos appear under the *Device Browser* window after they have been transferred to the key chain.

- 5 Click **OK** to close the program. You can now disconnect the key chain from the computer and view a slideshow of the photos you've transferred.

Viewing a slideshow

To start a slideshow:

- Press and hold **(C/M)** to turn on the key chain. A slideshow of the photos stored in the key chain begins automatically.

To skip forward or backward though photos:

- Press **(⏩)** to skip forward or **(⏪)** to skip backward.

To pause a slideshow:

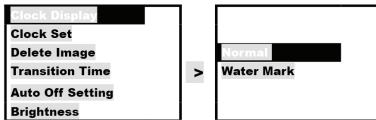
- 1 Press **(⏸)** to pause the slideshow and display a single photo.
- 2 To resume the slideshow, press **(⏸)** again.

Viewing the clock/calendar

You can display the current time and date on the screen, either by itself (Normal mode) or as a watermark in front of photos during a slideshow (Water Mark mode).

To change the clock display setting:

- 1 Press **⏻** to enter the options menu, then press **⏻** to highlight **Clock Display**.



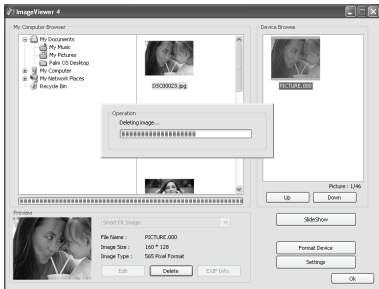
- 2 Press **⏪** and **⏩** to highlight **Normal** or **Water Mark**. Normal Mode displays the time and date only. Water Mark mode displays the time along with photos during slideshows.



Deleting photos

To delete individual images:

- 1 Connect the key chain to your computer using the included USB cable. The built-in software starts.
- 2 Select the photos that you want to delete from the **Device Browse** area on the right side of the screen, then click **Delete**. The photos are removed from the key chain.



To delete all photos:

- 1 Click **Format Device**. All photos are removed from the key chain.



Editing photos

You can change the way your photos are displayed on the key chain by using zoom, rotate, and flip.

Zooming in on a photo

To zoom in on a selected area of a photo:

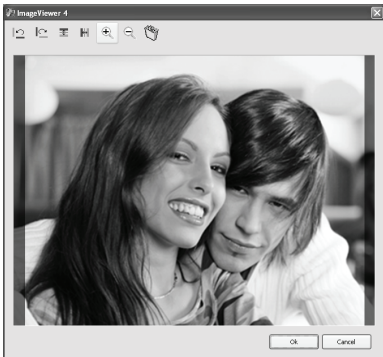
- 1 Select the photo in the ImageViewer.



- 2 Click **Edit**. The editing screen appears.





- 3** Click **+** (zoom) to zoom in on the area of the screen you want. After you zoom in, you can use the mouse to drag a rectangle around the area you **want** to see on the center of the screen.

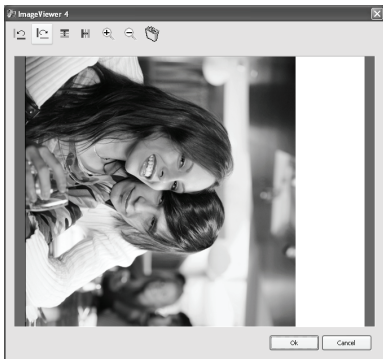


- 4** Click **OK** to save your changes.

Rotating an image



To rotate an image:

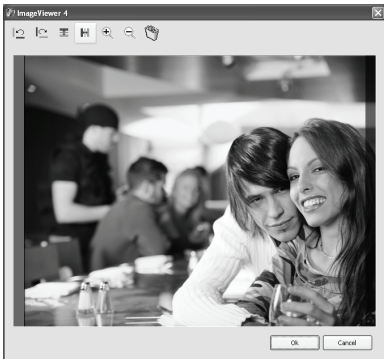
- With the editing screen active, click  or  (rotate) to rotate the image counter-clockwise or clockwise in 90° increments.



Flipping or mirroring an image

To flip or mirror an image:

- To vertically flip an image, click  (flip). To horizontally mirror the image, click  (mirror).

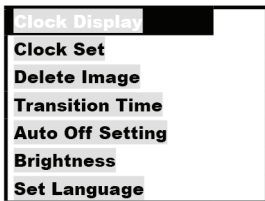


Setting viewing options

You can change photo display duration, brightness, clock display, and other options.

To set viewing options:


- 1 Press **OV/M** to enter the options menu. Available options are shown:



- 2 Use the **◀◀** and **▶▶** keys to select the previous or next item.

The following table lists all possible Setup menu options, submenu options, and a description of their actions in all viewing screens.

Menu option	Description
Clock display	Enters clock/calendar display mode.
Normal	Displays the time and date only.
Water mark	Displays the time during a slideshow.
Clock set	Sets the time and date.
Delete image	Deletes the selected image.
Transition time	Sets duration of each photo display during a slideshow.
Auto off setting	Sets the amount of time that must pass with no user interaction before the key chain automatically turns off.
Brightness	Adjusts the brightness of the LCD display.
Set language	Sets the menu language. Available choices are English, French and Spanish.


3 To confirm your selection, press .

Troubleshooting

Problem

The key chain won't turn on.

Solution

- Make sure that you press and hold the  button for a few seconds.
- If the key chain still does not turn on, connect it to your computer's USB port with the supplied USB cable and charge the battery.

Specifications

Color	NS-DKEYRD10: Red NS-DKEYBK10: Black
Screen size	1.8 inch (45.7 mm)
Screen format	Standard
Screen resolution	160 × 128 pixels
File Format	Standard JPEG
USB	Mini USB Type A device port

Power input	Mini USB self-powered
Certification	FCC/PSE (adapter)
Internal memory	2 MB
Battery life	3+ hours on continuous play with full charge

Legal notices

FCC Part 15

This device complies with Part 15 of the FCC Rules. Operation of this product is subject to the following two conditions: (1) this device may not cause harmful interference, and (2) this device must accept any interference received, including interference that may cause undesired operation.

This equipment has been tested and found to comply within the limits for a class B digital device, pursuant to Part 15 of the FCC Rules. These limits are designed to provide reasonable protection against harmful interference in a residential installation. This equipment generates, uses, and can radiate radio frequency energy and, if not installed and used in accordance with the instructions, may cause harmful interference to radio communications. However, there is no guarantee that interference will not occur in a particular installation. If this equipment does cause harmful interference to radio or television reception, which can be determined by turning the equipment off and on, the user is encouraged to try to correct the interference by one or more of the following measures:

- Reorient or relocate the receiving antenna.
- Increase the separation between the equipment and receiver.
- Connect the equipment into an outlet on a circuit different from that to which the receiver is connected.
- Consult the dealer or an experienced technician for help.

FCC warning

Changes or modifications not expressly approved by the party responsible for compliance with the FCC Rules could void the user's authority to operate this equipment.

Canada ICES-003 statement

This Class B digital apparatus complies with Canadian ICES-003.

90-day limited warranty

Insignia Products ("Insignia") warrants to you, the original purchaser of this new **NS-DKEYBK10 and NS-DKEYRD10** ("Product"), that the Product shall be free of defects in the original manufacture of the material or workmanship for a period of 90 days from the date of your purchase of the Product ("Warranty Period"). This Product must be purchased from an authorized dealer of Insignia brand products and packaged with this warranty statement. This warranty does not cover refurbished Product. If you notify Insignia during the Warranty Period of a defect covered by this warranty that requires service, terms of this warranty apply.

How long does the coverage last?

The Warranty Period lasts for 90 days from the date you purchased the Product. The purchase date is printed on the receipt you received with the Product.

What does this warranty cover?

During the Warranty Period, if the original manufacture of the material or workmanship of the Product is determined to be defective by an authorized Insignia repair center or store personnel, Insignia will (at its sole option): (1) repair the Product with new or rebuilt parts; or (2) replace the Product at no charge with new or rebuilt comparable products or parts. Products and parts replaced under this warranty become the property of Insignia and are not returned to you. If service of Products or parts are required after the Warranty Period expires, you must pay all labor and parts charges. This warranty lasts as long as you own your Insignia Product during the Warranty Period. Warranty coverage terminates if you sell or otherwise transfer the Product.

How to obtain warranty service?

If you purchased the Product at a retail store location, take your original receipt and the Product to the store you purchased it from. Make sure that you place the Product in its original packaging or packaging that provides the same amount of protection as the original packaging. If you purchased the Product from an online web site, mail your original receipt and the Product to the address listed on the web site. Make sure that you put the Product in its original packaging or packaging that provides the same amount of protection as the original packaging.

To obtain in-home warranty service for a television with a screen 25 inches or larger, call 1-888-BESTBUY. Call agents will diagnose and correct the issue over the phone or will have an Insignia-approved repair person dispatched to your home.

Where is the warranty valid?

This warranty is valid only to the original purchaser of the product in the United States, Canada, and Mexico.

What does the warranty not cover?

This warranty does not cover:

- Customer instruction
- Installation
- Set up adjustments
- Cosmetic damage
- Damage due to acts of God, such as lightning strikes
- Accident
- Misuse
- Abuse
- Negligence
- Commercial use
- Modification of any part of the Product, including the antenna

This warranty also does not cover:

- Damage due to incorrect operation or maintenance
- Connection to an incorrect voltage supply
- Attempted repair by anyone other than a facility authorized by Insignia to service the Product
- Products sold as is or with all faults
- Consumables, such as fuses or batteries

- Products where the factory applied serial number has been altered or removed

REPAIR REPLACEMENT AS PROVIDED UNDER THIS WARRANTY IS YOUR EXCLUSIVE REMEDY. INSIGNIA SHALL NOT BE LIABLE FOR ANY INCIDENTAL OR CONSEQUENTIAL DAMAGES FOR THE BREACH OF ANY EXPRESS OR IMPLIED WARRANTY ON THIS PRODUCT, INCLUDING, BUT NOT LIMITED TO, LOST DATA, LOSS OF USE OF YOUR PRODUCT, LOST BUSINESS OR LOST PROFITS. INSIGNIA PRODUCTS MAKES NO OTHER EXPRESS WARRANTIES WITH RESPECT TO THE PRODUCT, ALL EXPRESS AND IMPLIED WARRANTIES FOR THE PRODUCT, INCLUDING, BUT NOT LIMITED TO, ANY IMPLIED WARRANTIES OF AND CONDITIONS OF MERCHANTABILITY AND FITNESS FOR A PARTICULAR PURPOSE, ARE LIMITED IN DURATION TO THE WARRANTY PERIOD SET FORTH ABOVE AND NO WARRANTIES, WHETHER EXPRESS OR IMPLIED, WILL APPLY AFTER THE WARRANTY PERIOD. SOME STATES, PROVINCES AND JURISDICTIONS DO NOT ALLOW LIMITATIONS ON HOW LONG AN IMPLIED WARRANTY LASTS, SO THE ABOVE LIMITATION MAY NOT APPLY TO YOU. THIS WARRANTY GIVES YOU SPECIFIC LEGAL RIGHTS, AND YOU MAY ALSO HAVE OTHER RIGHTS, WHICH VARY FROM STATE TO STATE OR PROVINCE TO PROVINCE.

Contact Insignia:

For customer service please call 1-877-467-4289
www.insigniaproducts.com

Distributed by Best Buy Purchasing, LLC
7601 Penn Avenue South, Richfield, Minnesota, U.S.A.
55423-3645

© 2009 Best Buy Enterprise Services, Inc.

All rights reserved. INSIGNIA is a trademark of Best Buy Enterprise Services, Inc. Registered in some countries. All other products and brand names are trademarks of their respective owners.

INSIGNIA™

www.insigniaproducts.com (877) 467-4289

Distributed by Best Buy Purchasing, LLC
7601 Penn Avenue South, Richfield, MN USA 55423-3645

© 2009 Best Buy Enterprise Services, Inc.

All rights reserved. INSIGNIA is a trademark of Best Buy Enterprise Services, Inc.
Registered in some countries.

All other products and brand names are trademarks of their respective owners.

ENGLISH
09-0528

Free Manuals Download Website

<http://myh66.com>

<http://usermanuals.us>

<http://www.somanuals.com>

<http://www.4manuals.cc>

<http://www.manual-lib.com>

<http://www.404manual.com>

<http://www.luxmanual.com>

<http://aubethermostatmanual.com>

Golf course search by state

<http://golfingnear.com>

Email search by domain

<http://emailbydomain.com>

Auto manuals search

<http://auto.somanuals.com>

TV manuals search

<http://tv.somanuals.com>