

Kodak *ADVANTIX*

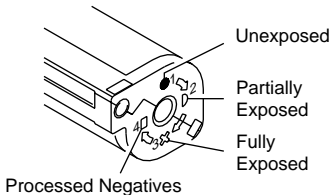
2100 AUTO
Camera



Download from www.Somanuals.com. All Manuals Search And Download.

Film Status Indicator (FSI)

A highlighted indicator advances from one symbol to another to identify the status of the film inside the cassette.



This device complies with part 15 of the FCC Rules. Operation is subject to the following two conditions: (1) This device may not cause harmful interference, and (2) this device must accept any interference received, including interference that may cause undesired operation.

NOTE: Your model camera has been tested and found to comply with the limits for a Class B digital device, pursuant to Part 15 of the FCC Rules. These limits provide reasonable protection against interference in residential use. The camera generates, uses and can radiate radio frequency energy and, if not used in accordance with the instructions, may cause interference to radio communications. There is no guarantee that interference will not occur. If this camera does cause interference to radio or television reception, which can be determined by turning the camera off and on, you may reduce the interference by the following:

- Reorient or relocate the receiving antenna.
- Increase the separation between the camera and the receiver.
- Consult the dealer or an experienced radio/television technician for help.

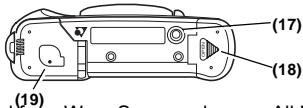
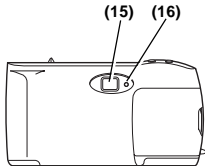
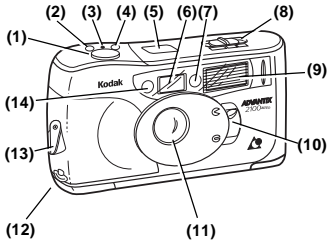
Changes or modifications not approved by the party responsible for compliance could void the user's authority to operate the equipment.



Look for this logo to be certain the film you buy is made for this camera.

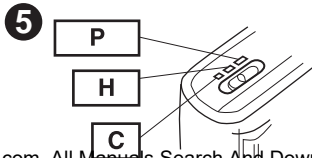
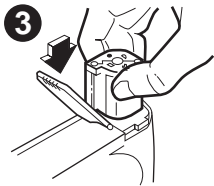


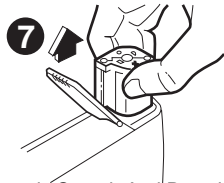
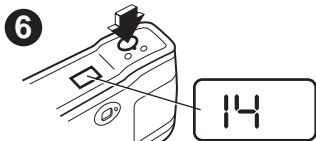
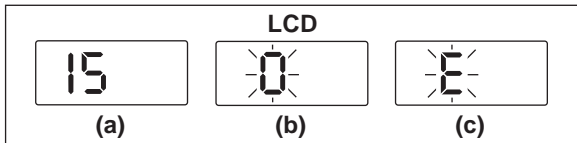
Look for this logo to select a certified photofinisher for developing your film and to assure that you get all the features of the Advanced Photo System.



LCD







This Class B digital apparatus meets all requirements of the Canadian Interference-Causing Equipment Regulations.

Welcome to the innovative world of the Advanced Photo System!
And thank you for buying this *KODAK ADVANTIX 2100* AUTO
Camera.

**Need help with your camera or more information about the
new Advanced Photo System? Call Kodak (United States
only) toll free from 8:00 a.m. to 8:00 p.m. (Eastern time)
Monday through Friday at 1 (800) 242-2424. The toll free
number (in Canada only) from 8:30 a.m. to 5:00 p.m.
(Eastern time) Monday through Friday is 1 (800) 465-6325;
please ask for ext. 36100.**

ENGLISH

CAMERA IDENTIFICATION

See inside cover flaps of manual for camera diagrams.

- | | |
|--|---|
| (1) Shutter Button | (13) Film-Door Latch |
| (2) Red-Eye-Reduction Button | (14) Meter-Cell Window |
| (3) Rewind Button | (15) Viewfinder Eyepiece |
| (4) Self-Timer Button | (16) Camera- /Flash-Ready Lamp |
| (5) LCD Panel | (17) Tripod Socket |
| (6) Viewfinder | (18) Battery Door |
| (7) Self-Timer/Red-Eye-Reduction Lamp | (19) Film Door |
| (8) Print-Size Selector | (20) Red-Eye-Reduction Indicator |
| (9) Flash | (21) Battery Symbol |
| (10) Lens-Cover Switch | (22) Picture Counter |
| (11) Lens | |
| (12) Strap Pin | |

BATTERIES

This camera uses 2 AA-size alkaline batteries that supply power for all camera operations. The camera automatically turns off after approximately 3 minutes. You can resume power by pressing any one of the function buttons.

Low-Batteries Warning

It's time to replace the batteries when —

- the Battery Symbol **(21)** appears on the LCD Panel **(5)**
- the film doesn't prewind, or
- the camera will not operate.

Battery Tips:

- **Remember to keep spare batteries with you at all times.**
- Read and follow all warnings and instructions supplied by the battery manufacturer.
- Keep batteries away from children.
- Do not attempt to disassemble, recharge or short circuit the batteries, or subject them to high temperature or fire.
- Store batteries in original packaging prior to use.

LOADING THE FILM

For excellent all-around results for indoor and outdoor picture-taking, use KODAK ADVANTIX 200-Speed Film.

1. Turn the Film-Door Latch **(13)** to the "open" position and insert the film cassette completely into the film chamber **③**.
2. Close the Film Door **(19)** .
3. Slide the Lens-Cover Switch **(10)** to the "open" position to uncover the lens **④** and to start the auto-film prewind. (If the lens-cover is already opened, press the shutter button to start the auto-film prewind.)
4. After the film prewinds, the Picture Counter **(22)** on the LCD Panel **(5)** shows the number of exposures remaining **(a)**.

NOTE: After you close the safety-interlock film door, you cannot open the film door until the film is completely rewound into the film cassette.

TAKING PICTURES

You can take Classic (C), HDTV (H), and Panoramic (P) pictures on the same film cassette (see following table for typical print sizes). **Your photo-processing cost will be based on the format size(s) that you use to expose the film.**

1. Slide the Lens-Cover Switch (10) to uncover the Lens (11) and to turn the camera on ④.
2. Move the Print-Size Selector (8) to the desired format ⑤.
3. **Frame your subject inside the viewfinder marks within the Viewfinder Eyepiece (15) for C, H and P formats. For a sharp picture, stand at least 4 ft (1.2 m) from your subject.**
4. Partially depress the Shutter Button (1) so that the Camera-/Flash-Ready Lamp (16) glows green.
5. Press the shutter button **completely down** to take the picture ⑥.

Typical Print Sizes (Formats)

C	H	P
Classic	Group & Wide (HDTV)	Panoramic
3 1/2 x 5" or 4 x 6" (88.9 x 127 mm or 102 x 152 mm)	3 1/2 x 6" or 4 x 7" (88.9 x 152 mm or 102 x 178 mm)	3 1/2 x 10" to 4 x 11 1/2" (88.9 x 254 mm to 102 x 292.7 mm)

Using the Self-Timer

1. Place the camera on a firm support.
2. Slide the Lens-Cover Switch **(10)** to uncover the Lens **(11)** and to turn the camera on **(4)**.
3. Frame your subject in the Viewfinder Eyepiece **(15)**.
4. Press the Self-Timer Button **(4)** and Shutter Button **(1)** at the same time. The Self-Timer Lamp **(7)** "blinks" for 10 seconds before the picture is taken.

NOTE: If you want to stop the self-timer operation before the picture is taken, close the lens cover.

Tips for Better Pictures

- Hold the camera steady when taking pictures.
- Keep your pictures simple. Move close enough to your subject so it fills the viewfinder **but not closer than 4 ft (1.2 m)**.
- Take pictures at the subject's level. Kneel down to take pictures of children and pets.
- Hold your camera vertically to capture tall, narrow subjects, such as a waterfall, skyscraper, or single person.
- Add interest to your picture by framing it with a tree branch, window, or even the rails of a fence.
- Keep the sun behind you for best subject illumination.

TAKING FLASH PICTURES

In dim light, such as indoors or outdoors in heavy shade or on dark overcast days, you need flash. Your camera has a built-in flash which automatically fires when needed. Wait for the Camera- /Flash-Ready Lamp **(16)** to glow green, upon partially depressing the shutter button, before you take the picture.

Flash-to-Subject Distance

ISO Film Speed	Flash-to-Subject Distance
100	4 to 11 ft (1.2 to 3.3 m)
200	4 to 15 ft (1.2 to 4.6 m)
400	4 to 22 ft (1.2 to 6.6 m)

Flash Tips

- Turn on room lights and have the subject face the lights to minimize red eyes in pictures.
- Stand at an angle to shiny surfaces like windows or mirrors to avoid flash reflection and bright spots in your pictures.
- Keep your fingers and other objects away from the picture-taking lens, flash, and meter-cell window to avoid dark or light pictures.

Using Red-Eye Reduction

This camera has an automatic flash that fires when you need it. To minimize red eyes in flash pictures, use the red-eye-reduction feature.

1. Slide the Lens-Cover Switch **(10)** to uncover the Lens **(11)** and to turn the camera on **(4)**.
2. Press the Red-Eye-Reduction Button **(2)**. Make sure the Red-Eye-Reduction Indicator **(20)** appears on the LCD Panel **(5)**.
3. Have your subject look directly at the Red-Eye-Reduction Lamp **(7)** located next to the lens.
4. Press the Shutter Button **(1)** to take the picture.

NOTE: To exit from the red-eye-reduction mode, repress the red-eye-reduction button or turn the camera off by closing the lens cover.

UNLOADING THE FILM

After you take the last picture on the film cassette, the film automatically starts to rewind. When the film is fully rewound, the Picture Counter **(22)** on the LCD Panel **(5)** displays a blinking "0" **(b)**, and a blinking "E" **(c)** will appear when you remove the film from the camera.

IMPORTANT: Do not remove the film cassette from the camera until the motor stops and a blinking "0" appears on the LCD panel.

Using the Rewind Button

If you don't want to take pictures on the entire film cassette, you can automatically rewind the film by pressing the Rewind Button **(3)**. **Once you've used this feature, you cannot reload the same film cassette into the camera.**

TROUBLESHOOTING

What happened	Probable cause	Solution
Camera will not operate	There are no more pictures remaining	Remove the film
	Batteries weak, dead, missing, or improperly inserted	Replace or reload the batteries
Film does not advance or rewind	Batteries weak, dead, missing, or improperly inserted	Replace or reload the batteries
Film cassette does not fit completely into film chamber; film door does not close	Loaded exposed, partially exposed, or processed film into the camera	Load only unexposed film into the camera

SPECIFICATIONS

Film Type: KODAK ADVANTIX Film for color prints; slide, chrome, or color reversal film not for use in this camera

Lens: Fixed-focus, 25 mm, *f*/5.4, 3-element glass hybrid with protective lens cover

Viewfinder: Albada with C, H, & P format display

Film-Speed Range: DXIX (ISO) 100, 200, 400 or 800 for color print films

Flash Unit: KODAK SENSALITE™ Flash

Focus Range: Daylight: 4 ft. (1.2 m) to infinity

Apertures: Daylight: *f*/10; flash: *f*/5.4

Shutter: 2-step electronic; daylight: 1/125 sec at *f*/10;

Flash: 1/70 sec at *f*/5.4

Power Source: 2 AA-size alkaline batteries

Dimensions: Approx. 4.6 x 2.4 x 1.5 in. (116.8 x 61.1 x 37.8 mm)

Weight: Approx. 5.3 oz. (150 g) without film & batteries

For warranty purposes, please keep your sales receipt as proof of the date

Download from Www.Somanuals.com. All Manuals Search And Download.

Kodak, Sensalite, Advantix, and the Advanced Photo System
symbol and logotype are trademarks.

Download from [Www.Somanuals.com](http://www.Somanuals.com). All Manuals Search And Download.



Consumer Imaging
EASTMAN KODAK COMPANY
Rochester, NY 14650

Pt. No. **914 7539**

CAT **885 5322**

Minor Revision 12-96

Printed in U.S.A.

Download from [Www.Somanuals.com](http://www.Somanuals.com). All Manuals Search And Download.

Free Manuals Download Website

<http://myh66.com>

<http://usermanuals.us>

<http://www.somanuals.com>

<http://www.4manuals.cc>

<http://www.manual-lib.com>

<http://www.404manual.com>

<http://www.luxmanual.com>

<http://aubethermostatmanual.com>

Golf course search by state

<http://golfingnear.com>

Email search by domain

<http://emailbydomain.com>

Auto manuals search

<http://auto.somanuals.com>

TV manuals search

<http://tv.somanuals.com>