



KONICA MINOLTA

# magicolor 2480MF/2490MF



## Technical Guide



Copyright © 2006 KONICA MINOLTA PRINTING SOLUTIONS U.S.A, INC.

KONICA MINOLTA and the KONICA MINOLTA logo are trademarks or registered trademarks of KONICA MINOLTA HOLDINGS, INC. magicolor is a trademark or registered trademark of KONICA MINOLTA PRINTING SOLUTIONS U.S.A., INC. Simitri is a trademark or registered trademark of KONICA MINOLTA BUSINESS SOLUTIONS, INC. Nuance, ScanSoft, and PaperPort are trademarks or registered trademarks of Nuance Communications, Inc. or its affiliates in the United States and other countries. silex technology is a registered trademark of silex technology, Inc. All other trademarks or registered trademarks are the property of their respective owners.

September 2006



# Contents

*KONICA MINOLTA magicolor® 2480MF and magicolor 2490MF—Color laser productivity centers*

---

- Introduction** ..... 1
- Specs at a Glance** ..... 2
- Target Markets** ..... 3
- Key Features** ..... 4
  - Dependable, High-Speed Laser Performance ..... 4
  - Affordable to Buy and Own ..... 4
  - Outstanding Prints, Copies, Scans, Photos, and Faxes ..... 5
  - Compact Size ..... 6
  - Easy to Set up and Use ..... 7
  - Camera Direct Photo Printing ..... 7
  - Exceptional Media Handling ..... 8
  - Free Technical Support ..... 8
- Engine** ..... 9
  - Type ..... 9
  - Duty Cycle ..... 9
  - Print/Copy Speeds ..... 9
  - First-Print-Out Time ..... 9
  - First-Copy-Out Time ..... 9
  - Operating Environment Conditions ..... 10
  - Weights and Dimensions ..... 10
- Controller** ..... 12
  - Host System Requirements ..... 12
  - Processor ..... 12
  - Memory ..... 12
  - Compatibility ..... 12
  - Connectivity ..... 13
  - Resolution ..... 13
- Media Handling** ..... 16
  - Standard Media Handling ..... 16
  - Supported Media Types ..... 16
  - Media Path ..... 17
  - Imageable Area ..... 17
  - Supported Media Sizes ..... 18
  - Advanced Document Processing—Printing ..... 19



Advanced Document Processing—Copying . . . . .	20
Advanced Document Processing—Scanning . . . . .	21
Advanced Document Processing—Faxing . . . . .	21
<b>Supplies . . . . .</b>	<b>22</b>
Toner Cartridges . . . . .	22
Drum Cartridge . . . . .	23
In-box Supplies . . . . .	23
Replacement Supplies . . . . .	23
Supplies Monitoring . . . . .	24
<b>All-in-One Management . . . . .</b>	<b>26</b>
Convenient Management Tools . . . . .	26
Printer Drivers . . . . .	26
Control Panel . . . . .	27
PageScope Web Connection . . . . .	29
Electronic Documentation . . . . .	31
<b>Scanning . . . . .</b>	<b>32</b>
Scanning from a PC with PaperPort SE . . . . .	32
Converting Scanned Images to Editable Text with PaperPort SE . . . . .	33
Organizing Image Files . . . . .	33
Scanning to Email . . . . .	34
<b>Faxing . . . . .</b>	<b>35</b>
Using the magicolor 2490MF as a Standalone Fax . . . . .	35
Sending and Receiving Digital Documents with FaxTalk Communicator . . . . .	36
Using FaxTalk Communicator with PaperPort SE . . . . .	37
<b>Camera Direct Photo Printing . . . . .</b>	<b>38</b>
USB Host Port with PictBridge Compatibility . . . . .	38
<b>Color Control . . . . .</b>	<b>39</b>
Professional Color Tools for Novices and Professionals . . . . .	39
Automatic ICC-Based Color Matching . . . . .	39
ICC Device Profiles . . . . .	40
Enhanced Automatic Image Density Control (eAIDC) . . . . .	40
<b>Options . . . . .</b>	<b>41</b>
Duplex Option . . . . .	41
Lower Feeder Unit . . . . .	41
External 10/100BaseTX Ethernet NIC . . . . .	41
Extended Warranties . . . . .	41



# Introduction

*Print, Copy, Scan, Camera Direct Photo Print, and Fax\* functionality make the magicolor 2400MF Series all-in-ones indispensable desktop tools.*

In today's complex business environment, it's important to keep a competitive edge. The magicolor 2480MF and 2490MF color laser all-in-ones (AIOs) help small- and medium-sized businesses do just that by combining several essential office functions into a single machine that saves time, space, and money.

## Print & Copy

The magicolor 2480MF and 2490MF are quick to print and copy, delivering 20 crisp black & white or 5 brilliant, true-to-life color pages per minute—regardless of the print quality chosen—to keep up with the demands of a busy office.



## Scan

Scan paper documents and photos (up to 8.5" x 14") in beautifully detailed 24-bit color directly to email over the network. Or use ScanSoft PaperPort® SE from Nuance®, bundled with the magicolor 2480MF and 2490MF, to scan to the PC via the USB interface. Scanned documents can be annotated; saved in PDF, JPEG, TIFF, and other file formats for easy file archiving or sharing; or converted to editable text via Optical Character Recognition (OCR).

## Fax

The magicolor 2490MF features standalone 33.6 Kbps Super G3 fax capability with 9 one-touch dials, 9 group dials, 100 speed dials, 125 broadcast stations, and 4 MB of fax memory.

## PC Fax

FaxTalk Communicator™, also bundled with the magicolor 2480MF and 2490MF, can be used to send and receive digital faxes, annotate faxes before sending or printing, and turn the PC into a speakerphone and answering machine. You can also scan documents directly into FaxTalk Communicator from PaperPort SE.



## Camera Direct Photo Print

The magicolor 2480MF and 2490MF print up to full-size 8.5" x 11" photos directly from a PictBridge™-enabled digital camera—no PC or special software required.

\* The magicolor 2490MF provides standalone fax functionality; the magicolor 2480MF and magicolor 2490MF both provide PC Fax functionality.





# Specs at a Glance

An overview of the features of the *magicolor 2480MF* and the *magicolor 2490MF*.

	magicolor 2480MF	magicolor 2490MF
<b>Print Method</b>	Electrophotographic color laser	
<b>Processor</b>	Oasis CD2040, 108 MHz	
<b>Print/Copy</b>		
<b>Speed (letter/A4)</b>	Up to 20 b&w ppm or 5 color ppm	
<b>Print Resolution</b>	Up to 2400 x 600 dpi	
<b>Copy Quality</b>	Photo, Text, Mix / Normal, Fine	
<b>Scan</b>		
<b>Speed</b>	6 sec/pg b&w; 12 sec/pg color	4 sec/pg b&w; 10 sec/pg color
<b>Color Depth/Resolution</b>	24-bit color; 600 x 600 dpi	
<b>Drivers</b>	TWAIN and WIA	
<b>Utility</b>	ScanSoft PaperPort SE from Nuance*	
<b>Fax (standalone)</b>	N/A	33.6 Kbps Super G3
<b>PC Fax</b>	FaxTalk Communicator; send & receive	
<b>Camera Direct Photo Print</b>	PictBridge 1.0 via USB 1.1 Host Port	
<b>Duty Cycle (letter/A4)</b>	Up to 35,000 prints/month	
<b>Memory</b>	96 MB	128 MB
<b>Interfaces</b>	Hi-Speed USB 2.0, USB 1.1 Host Port for Camera Direct Photo Print, Optional External 10/100BaseTX Ethernet NIC	10/100BaseTX Ethernet®, Hi-Speed USB 2.0, USB 1.1 Host Port for Camera Direct Photo Print
<b>Media Input</b>	200-sheet multipurpose tray 50-sheet Automatic Document Feeder Optional 500-sheet Lower Feeder Unit & Optional Automatic Duplexer	
<b>Media Output</b>	100-sheet face-down tray	
<b>Media Sizes</b>	Up to legal (8.5" x 14" / 216 x 356 mm)	
<b>Media Types</b>	Plain/recycled paper, glossy stock, thick stock, transparencies, postcards, laser-quality labels, envelopes	
<b>Media Weights</b>	Up to 90 lb Index (163 g/m <sup>2</sup> )	
<b>Color Control</b>	Enhanced Automatic Image Density; Control (eAIDC) built-in calibration; Automatic ICC-based color matching	
<b>Compatibility</b>	Windows® XP/2000/Me/98SE	Windows Server 2003/XP/2000/Me/98SE
<b>Warranty</b>	One-year exchange	

\* The PaperPort SE software has a single-user license. Additional licenses are available for purchase.



# Target Markets

*A perfect fit for SOHO and SMB.*



· PRINT · COPY · SCAN · FAX\* ·  
· CAMERA DIRECT PHOTO PRINT ·

## Use the magicolor 2480MF and 2490MF for any business document:

- Daily correspondence
- Email & web pages
- Newsletters
- Posters
- CD-ROM & mailing labels
- Business papers
- Spreadsheets & charts
- Reports
- Envelopes
- Maps
- Photographs
- Invoices

\* The magicolor 2490MF provides standalone fax functionality; the magicolor 2480MF and magicolor 2490MF both provide PC Fax functionality.

The versatile magicolor 2480MF and 2490MF color laser all-in-ones are ideal for small and home offices, small- and medium-sized businesses, and workgroups in larger organizations. They are amazingly cost-effective, yet boast several essential business functions in one compact and stylish unit.

If you've been faced with any of these problems, you're sure to find the magicolor 2480MF or 2490MF the solution you've been waiting for:

Too many office machines to maintain

A one-product solution for an organization's essential business functions means less time and money spent maintaining separate machines.

Limited space

Satellite and home offices that have limited space but still require the functionality of several office machines will discover that the space-saving design of the magicolor 2480MF and 2490MF is perfect for any workspace.

Lack of privacy

For executives and departments (such as Finance and Human Resources) that require private document management, the magicolor 2480MF and 2490MF are complete desktop solutions.

Expensive outsourced document production with long lead times

Businesses requiring professional, high-quality documents can save money and time by using the magicolor 2480MF or 2490MF as an integral part of the document production cycle—copy or scan source materials, inspect photographs printed directly from a digital camera, annotate and fax draft documents for review, and print final documents in brilliant, attention-getting color.

Aging technologies

The magicolor 2480MF and 2490MF color laser all-in-ones are the ideal solution for businesses moving up from older technologies—such as single-function devices, monochrome laser AIOs, and color inkjet AIOs.



## Key Features

*It's easy to see why the magicolor 2480MF and 2490MF are the new 'must-have' machines for every office.*

---

### Dependable, High-Speed Laser Performance

---

The magicolor 2480MF and 2490MF feature speedy first-page-out times of 13 seconds or less for black & white and 22 seconds or less for color prints. Multiple copies are delivered at 20 black & white or 5 full-color pages per minute, regardless of the print quality chosen.

Documents and photographs can be scanned in less than 6 seconds per black & white page and 12 seconds per 24-bit color page.

To share this color laser performance office-wide, the magicolor 2480MF and 2490MF provide 'Plug and Play' Hi-Speed USB 2.0 and Fast Ethernet (10/100BaseTX)\* interfaces, and they boast a robust duty cycle of up to 35,000 prints per month. Compatible with Windows Server 2003\*\*, XP, 2000, Me, and 98SE operating systems, the compact magicolor 2480MF and 2490MF fit seamlessly into today's SMB landscape.



### Affordable to Buy and Own

---

The magicolor 2480MF and 2490MF are competitively priced and cost-effective to own. Purchase supplies for just one office machine rather than several. And at just pennies a print, both full-color and black & white laser-quality documents and photographs won't break the budget. In fact, the magicolor 2480MF and 2490MF make it easy to save both money and time because important document production can be kept in house.

---

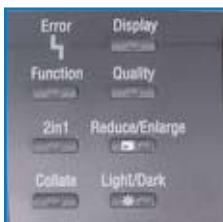
\* The magicolor 2490MF includes a built-in Fast Ethernet interface, and the magicolor 2480MF offers an optional External Fast Ethernet Print Server.

\*\* magicolor 2490MF only.





*For crisp text, rich blacks, vibrant colors, realistic photographs, detailed textures, and smooth shading print at 2400 x 600 dpi.*



*All copy customization functions are available through one-touch keys on the control panel.*

## Outstanding Prints, Copies, Scans, Photos, and Faxes

Based on an award-winning KONICA MINOLTA color laser print engine design, the magicolor 2480MF and 2490MF make it easy to produce professional laser-quality color prints, copies, scans, fax documents, and photos that are sure to impress.

### Print Quality

The magicolor 2480MF and 2490MF deliver outstanding print quality for any type of document. The following print resolutions are available:

- 2400 x 600 dpi
- 1200 x 600 dpi
- 600 x 600 dpi

Printing at 2400 dpi resolution produces crisp text, rich blacks, vibrant colors, realistic photographs, detailed textures, and smooth shading.

### Copy Quality

The following copy quality settings are available:

- Photo, Text, Mix
- Normal, Fine

Copy quality can be enhanced by specifying the type of document (text, photo, mixed) being copied as well as by adjusting lightness and density. Copies can be resized easily by using the 50-200% zoom function. All features are available through one-touch keys on the control panel.

### Scan Quality

Using the PaperPort SE software bundled with the magicolor 2480MF and 2490MF, documents and photos can be scanned directly to PDF, JPEG, TIFF, or another file format; annotated, edited, or converted to editable text with the Optical Character Recognition (OCR) feature.

These scan resolutions are available:

- 600 x 600 dpi
- 300 x 300 dpi
- 150 x 150 dpi



### Fax Quality (magicolor 2490MF only)

Three fax resolutions are available:

- |   |   |
|---|---|
| <input type="checkbox"/> Super Fine (203 x 392 dpi) | Best quality faxes                          |
| <input type="checkbox"/> Fine (203 x 196 dpi)       | Good quality faxes, good transmission times |
| <input type="checkbox"/> Standard (203 x 98 dpi)    | Fastest transmission times                  |

### PC Fax Quality

The FaxTalk Communicator software bundled with the magicolor 2480MF and 2490MF provides digital PC Fax send and receive functionality and allows you to annotate faxes before sending or printing. You can also drag and drop scanned documents from PaperPort SE for easy faxing. Two fax resolutions are available:

- |   |                            |
|---|----------------------------|
| <input type="checkbox"/> Fine (200 x 200 dpi)     | Best quality faxes         |
| <input type="checkbox"/> Standard (200 x 100 dpi) | Fastest transmission times |

### Simitri Polymerized Toner

KONICA MINOLTA Simitri Polymerized Toner, composed of uniformly sized toner particles, produces beautiful colors, clear text even in small sizes, and smooth halftones—regardless of the print quality or media type selected. Color remains consistent from print to print because each batch of Simitri Polymerized Toner is tested for optimal color quality. Simitri Polymerized Toner also features improved fusing, so output is more durable and never smears or fades like inkjet prints. Plus, Simitri Polymerized Toner has a life expectancy of over 100 years for output that lasts for generations.

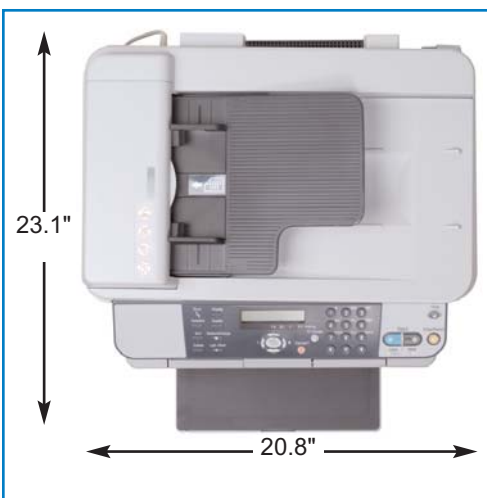
# Simitri

### Multi-pass Color Laser Technology

The magicolor 2480MF and 2490MF feature KONICA MINOLTA multi-pass color laser technology with improved printing precision. New optical technology on the print head (first introduced on the magicolor 2400 Series printers) allows for a wider angle, which greatly reduces the distance between the print head and the media. Decreasing this distance reduces the overall size of the unit, making it more compact.

### Compact Size

From an entirely practical standpoint, one of the beauties of the magicolor 2480MF and 2490MF is their compact desktop size. Imagine printing, copying, scanning, camera direct photo printing, and faxing—without even getting up from the desk. Adding an optional duplexer doesn't affect the size of the device at all, and an optional 500-sheet lower feeder increases the height by only 4.75".



*The small footprint of the magicolor 2480MF and 2490MF make them desktop friendly.*



## Easy to Set up and Use

Most people find their business day hectic enough without devoting time to the setup and maintenance of a new office machine. That's why ease of setup and use are designed into the magicolor 2480MF and 2490MF.

- ❑ **Pre-installed supplies:** Since all supplies are pre-installed at the factory, it typically takes less than 5 minutes to unpack and install the magicolor 2480MF or 2490MF, and print a configuration page.
- ❑ **Auto-run installation software:** The *Utilities & Documentation* CD-ROM for each all-in-one includes an auto-run program that guides you step-by-step through the installation process.
- ❑ **Convenient front access to supplies:** These all-in-ones use only five supplies—four toner cartridges (black, cyan, magenta, and yellow) and a drum cartridge. Convenient front access makes replacement of supplies a snap.
- ❑ **One-touch control panel functions:** Intuitive one-touch keys on the control panel make it easy to customize jobs.
- ❑ **LCD window:** The LCD window on the control panel displays copy settings, printer configuration, scan and fax configuration (magicolor 2490MF), toner supply, and status messages.
- ❑ **USB 1.1 Host Port:** The USB 1.1 Host Port is conveniently located on the front of these all-in-ones for quick photo printing from a PictBridge-enabled digital camera.
- ❑ **Automatic document feeder:** The 50-sheet automatic document feeder provides time-saving, unattended copying and scanning.
- ❑ **Optional duplexer:** You can manually duplex documents with the magicolor 2480MF and 2490MF, but an optional duplexer provides automatic two-sided printing and copying that saves both time and paper.



Print photos directly from a PictBridge-enabled digital camera—no PC or special software required.

## Camera Direct Photo Printing

The Camera Direct Photo Print function allows digital images to be printed directly from a PictBridge-enabled digital camera—no PC or special software required. Photos can be printed on any supported media up to 8.5" x 11". Borderless 4" x 6" prints are also available.\*

PictBridge provides control over a number of photo printing options, including resolution, media type and size, copy count, n-up, batch, and index printing.

\* The magicolor 2490MF supports 4" x 6" media. The magicolor 2480MF requires special media for borderless 4" x 6" prints. Go to [printer.konicaminolta.com](http://printer.konicaminolta.com) for a complete list of approved media.





## Exceptional Media Handling

The magicolor 2400MF Series all-in-ones support a wide variety of standard and custom media sizes (from 3.6" x 5.8" to 8.5" x 14"), as well as all common types of office media, including plain paper, thick stock, glossy stock, transparencies, labels (mailing, CD-ROM, etc.), and envelopes.

An optional automatic duplexer provides laser-quality, two-sided printed reports and other documents. It also lets you make cost-effective, two-sided copies from one-sided originals. It's never been so easy to print whatever is needed at a moment's notice.

For versatile copying and scanning, the flatbed glass and the automatic document feeder (ADF) support documents up to legal size (8.5" x 14").



*"I felt like he went out of his way to assist me. For as long as your service is as good as this you have a life-long KONICA MINOLTA customer. No going back to HP. —Luis T.*

## Free Technical Support

With KONICA MINOLTA US-based Technical Support, you never have to wait to have your questions answered. Average response time is less than 1 minute during normal business hours. Technical support is free for 5 years.

Technical support is available in three different ways:



- Answer Base:** The Answer Base provides 24-Hour Online Help. Answers to hundreds of common questions and diagnostic advice for all of our printers and all-in-ones are available at [printer.konicaminolta.com/support](http://printer.konicaminolta.com/support).



- Email:** If you can't find the answer you need in the Answer Base, contact one of our Support Engineers via email at <http://printer.konicaminolta.com/support/supportmail/index.html>.

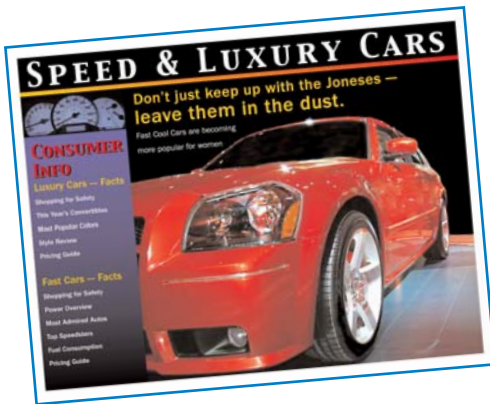


- Telephone:** If you would rather talk to a KONICA MINOLTA Technical Support engineer, call (877) 778-2687. Check current business hours at [printer.konicaminolta.com/support](http://printer.konicaminolta.com/support).



# Engine

Excellent print quality and performance.



Based on the award-winning magicolor 2400 Series print engine, the magicolor 2480MF and 2490MF offer exceptional quality and reliability.

## Type

The magicolor 2480MF and 2490MF use the same KONICA MINOLTA laser printer engine found in the award-winning magicolor 2400 Series printers. This engine features a multi-pass CMYK (cyan, magenta, yellow, black) printing system to produce full-color output.

## Duty Cycle

Maximum duty cycle is 35,000 letter/A4-size prints per month.

## Print/Copy Speed

	B&W	Full Color	Media Type/Size
<b>magicolor 2480MF/2490MF</b>	20 ppm	5 ppm	Plain paper, letter/A4

## First-Print-Out Time\*

	B&W	Full Color	Media Type/Size
<b>magicolor 2480MF</b>	12 sec	21 sec	Plain paper, letter/A4
<b>magicolor 2490MF</b>	13 sec	22 sec	Plain paper, letter/A4

\* From an idle, ready state

## First-Copy-Out Time\*

	B&W	Full Color	Media Type/Size
<b>magicolor 2480MF</b>	25 sec	52 sec	Plain paper, letter/A4
<b>magicolor 2490MF</b>	23 sec	52 sec	Plain paper, letter/A4

\* From an idle, ready state





## Operating Environment Conditions

<b>Power supply</b>	110–127 V, 50–60 Hz
<b>Power consumption</b>	1,100 W maximum 600 W or less (monochrome printing) 450 W or less (color printing) 250 W or less (standby) 28 W or less (Energy Saver)
<b>Temperature (operating)</b>	50°–95° F (10°–35° C)
<b>Humidity (operating)</b>	15–85% RH
<b>Noise</b>	57 dB or less (printing) 39 dB or less (standby)

## Weights and Dimensions



The compact magicolor 2480MF and 2490MF easily fit in any workspace.

### Weight

Shipping (all-in-one)	81.6 lbs (37.1 kg)
Shipping (lower feeder unit)	18.3 lbs (8.3 kg)
Shipping (duplex option)	7.7 lbs (3.5 kg)
All-in-one only with consumables	70.4 lbs (32 kg)
All-in-one only without consumables	63.1 lbs (28.7 kg)

### Packaging

Width	Depth	Height
26.6" (675 mm)	23.6" (600 mm)	27.1" (689 mm)

### Base unit (trays open)

Width	Depth	Height
20.8" (528 mm)	23.1" (586 mm)	20.9" (531 mm)

### Base unit (trays closed)

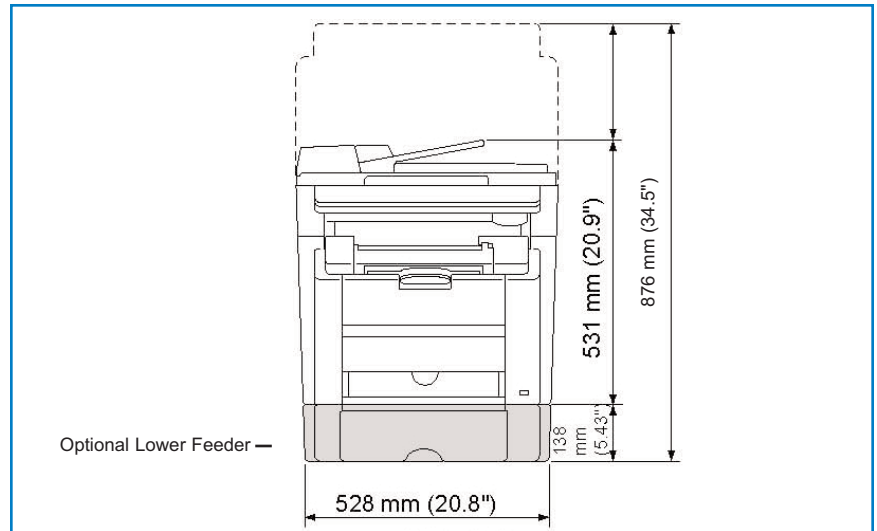
Width	Depth	Height
20.8" (528 mm)	18.7" (475 mm)	20.9" (531 mm)

### Base unit (trays open; with optional lower feeder unit and duplex option)

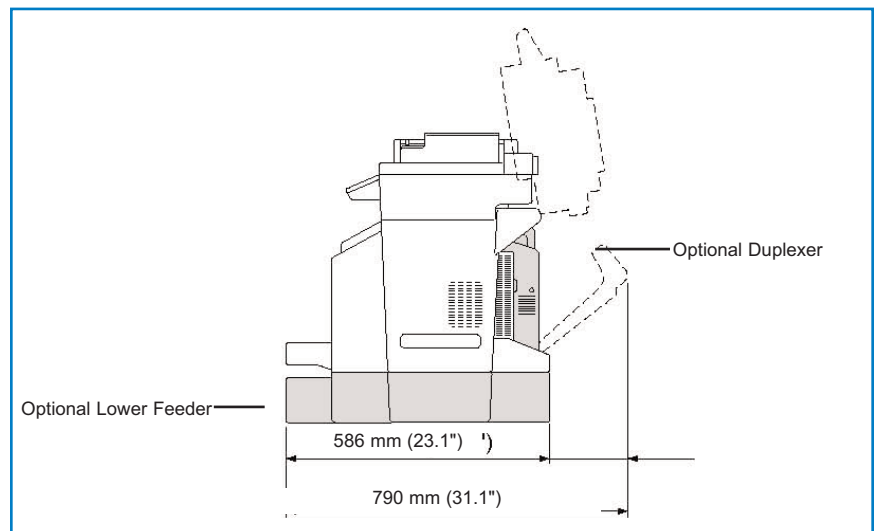
Width	Depth	Height
20.8" (528 mm)	23.1" (586 mm)	26.3" (669 mm)



*Clearance dimensions (front view)*



*Clearance dimensions (side view)*





## Controller

*The magicolor 2480MF and 2490MF use the power of the PC operating system to provide superior, cost-effective performance.*



### Host System Requirements

- 333 MHz Celeron®-class PC
- 128 MB RAM
- 128 MB free hard disk space
- CD-ROM/DVD drive for drivers and utilities

### Processor

The magicolor 2480MF and 2490MF use the power of the host computer's operating system for processing documents prior to printing. The controller's ASIC provides better performance than comparable processors because most image operations are executed in the hardware rather than with multiple, slower software commands.

### Memory

- magicolor 2480MF** 96 MB SDRAM on board
- magicolor 2490MF** 28 MB SDRAM on board

This RAM is sufficient for all simplex and duplex printing and copying, camera direct photo printing, and scanning at all supported resolutions. Additional memory is not required because the magicolor 2480MF and 2490MF use a highly efficient compression rate, and the embedded memory has been carefully synchronized with the internal processor.

### Compatibility

These all-in-ones are compatible with the following operating systems:

- magicolor 2480MF** Windows XP/2000/Me/98SE
- magicolor 2490MF** Windows Server 2003/XP/2000/Me/98SE





## Connectivity

The magicolor 2480MF and 2490MF provide the following interfaces:

	magicolor 2480MF	magicolor 2490MF
<b>10/100BaseTX Ethernet</b>	Optional	Standard
<b>Hi-Speed USB 2.0</b>	Standard	Standard
<b>USB 1.1 Host Port</b>	Standard	Standard

- ❑ **10/100BaseTX Ethernet**—The built-in 10/100BaseTX Ethernet autosensing interface on the magicolor 2490MF operates on both 10 Mbps LAN and 100 Mbps Fast Ethernet networks. It provides printing and scanning functionality over TCP/IP for Windows Server 2003/XP/2000/Me/98SE.

The silex technology SX-1000U 10/100BaseTX Ethernet Device Server is available for the magicolor 2480MF. This autosensing external network interface card operates on both 10 Mbps LAN and 100 Mbps Fast Ethernet networks, and it supports printing and scanning over TCP/IP for Windows XP/2000.

- ❑ **Hi-Speed USB 2.0**—This “Plug and Play” interface provides a 4-pin Series B connector and runs at speeds up to 480 Mbps.
- ❑ **USB 1.1 Host Port**—This interface for Camera Direct Photo Printing is conveniently located on the front of the magicolor 2400MF Series all-in-ones.



## Resolution

### Print

- ❑ **2400 x 600 dpi**—For the best print quality, choose 2400 x 600 dpi. This resolution is perfect for everything from text and line art to clip art and photographs. It provides clean text, great detail and character in fine lines and halftones, and rich, solid colors.
- ❑ **1200 x 600 dpi**—The default print resolution is fine for general business documents that include text and graphics.
- ❑ **600 x 600 dpi**—When printing drafts and disposable documents, select 600 x 600 dpi resolution.

Increasing or reducing print resolution does not affect the speed of the engine or significantly affect the amount of toner used for printed output. The magicolor 2480MF and 2490MF print at full speed regardless of the print resolution chosen, and they provide a low cost per page even at the highest print quality selections.

Print quality is further enhanced at all resolutions by the use of Simitri Polymerized Toner technology.





*Documents can be scanned from the flatbed glass or the automatic document feeder.*

## Copy

### magicolor 2480MF

- 2400 x 600 dpi—For the best results when printing everything from text and line art to clip art and photographs, choose 2400 x 600 dpi copy quality.
- 1200 x 600 dpi—The default copy resolution is 1200 x 600 dpi, which is fine for general business documents that include text and graphics.

Increasing or reducing copy resolution does not affect the speed of the engine or significantly affect the amount of toner used for printed output. The magicolor 2480MF prints at full speed regardless of the copy resolution chosen, and it provides a low cost per page even at the highest copy quality selections.

### magicolor 2490MF

- 600 x 600 dpi—This resolution is appropriate for all types of documents.

Copy quality is further enhanced by the use of Simitri Polymerized Toner technology and by adjusting such characteristics as lightness, density, and document type.

## Scan

Scan quality is composed of bit depth and optical resolution.

**Bit depth** refers to the amount of digital information embedded in each pixel. The magicolor 2480MF and 2490MF feature 24-bit color scans, which provide 16.7 million colors.

**Optical resolution** refers to the quality at which the scanner converts a paper image to a digital image. It is not the same as print resolution. The magicolor 2480MF and 2490MF provide the following optical scan resolutions:

- 600 x 600 dpi
- 300 x 300 dpi

The resolution at which a document should be scanned depends upon a number of factors, including the size of the original item, the type of item (text, photograph, or a mixture of both), and the final size and purpose of the scanned image (print, web, etc.)





## PaperPort<sup>SE</sup>

The PaperPort SE document management and imaging software included with the magicolor 2400MF all-in-ones allows you to edit, annotate, and save scanned documents to PDF, JPEG, TIFF, or another file format. Using the Optical Character Recognition (OCR) feature you can also convert scanned images to editable text. The PaperPort SE online help provides some helpful tips about resolution choices. However, a good guideline is to choose a higher scan resolution for files that will be printed and a lower scan resolution for files that will be posted to the web. In addition, the higher the resolution, the larger the file size.

TWAIN and WIA drivers are available for scanning from other Windows applications, such as Word and Photoshop. They are automatically installed on the PC at the same time the printer drivers are.

### [Fax](#)

The magicolor 2490MF provides three fax resolutions:

- Super Fine (203 x 392 dpi)
- Fine (203 x 196 dpi)
- Standard (203 x 98 dpi)

Super Fine resolution ensures that recipients receive the cleanest faxes, but Fine and Standard resolution faxes take less time to transmit.

For documents with shading, such as photos, Halftone may also be selected. Fax density (lightness or darkness) can also be specified.

### [PC Fax](#)

The Fax Communicator software bundled with the magicolor 2480MF and 2490MF provide digital fax send and receive functionality and allows you to annotate faxes before sending and printing. You can also drag and drop scanned documents from PaperPort SE for easy faxing.

Two fax resolutions are available:

- Fine (200 x 200 dpi)
- Standard (200 x 100 dpi)

For the cleanest faxes, choose Fine resolution; but for the fastest transmission times, choose Standard resolution.





# Media Handling

*The magicolor 2480MF and 2490MF support the media types, sizes, and features that productive businesses require.*

## Standard Media Handling

The magicolor 2400MF all-in-ones include a 200-sheet multipurpose tray for paper and other media. This tray accommodates all supported page sizes up to 8.5" x 14" (216 x 356 mm).

An optional 500-sheet lower feeder unit (letter or A4) is also available to increase paper input to 700 sheets.

Printed pages are delivered face down into the 100-sheet output tray, located beneath the scanner unit.

When necessary, both the multipurpose and output trays can be closed to conserve space. This reduces the depth by 4.4" (111 mm).



*The multipurpose tray holds up to 200 sheets of paper.*

## Supported Media Types

The magicolor 2480MF and 2490MF support a wide range of media commonly used for business applications. For a complete list of approved media, go to [printer.konicaminolta.com](http://printer.konicaminolta.com).



*The output tray must be opened before printing or copying.*

Media Type	Specifications	Setting
Normal paper	16–24 lb (60–90 g/m <sup>2</sup> )	Plain Paper
Recycled paper	16–24 lb (60–90 g/m <sup>2</sup> )	Plain Paper
Cardstock (thick stock)	25–43 lb bond* (91–163 g/m <sup>2</sup> )	Cardstock
Coated paper	16–24 lb (60–90 g/m <sup>2</sup> )	Coated Paper
Envelopes	Supported*	Envelope
Labels (sheet)	Supported**	Labels
Letterhead	16–24 lb (60–90 g/m <sup>2</sup> )	Letter Head
Photo (2-up, 4" x 6")	Office Depot #916-714	Coated
Postcards	16–43 lb (60–163 g/m <sup>2</sup> )	Postcard
Transparencies	KONICA MINOLTA Q-Media	Transparency

\*\* 43 lb bond is also referred to as 90 lb index

\* Must be certified for laser printers and capable of withstanding fusing temperature of 401° F (205° C)

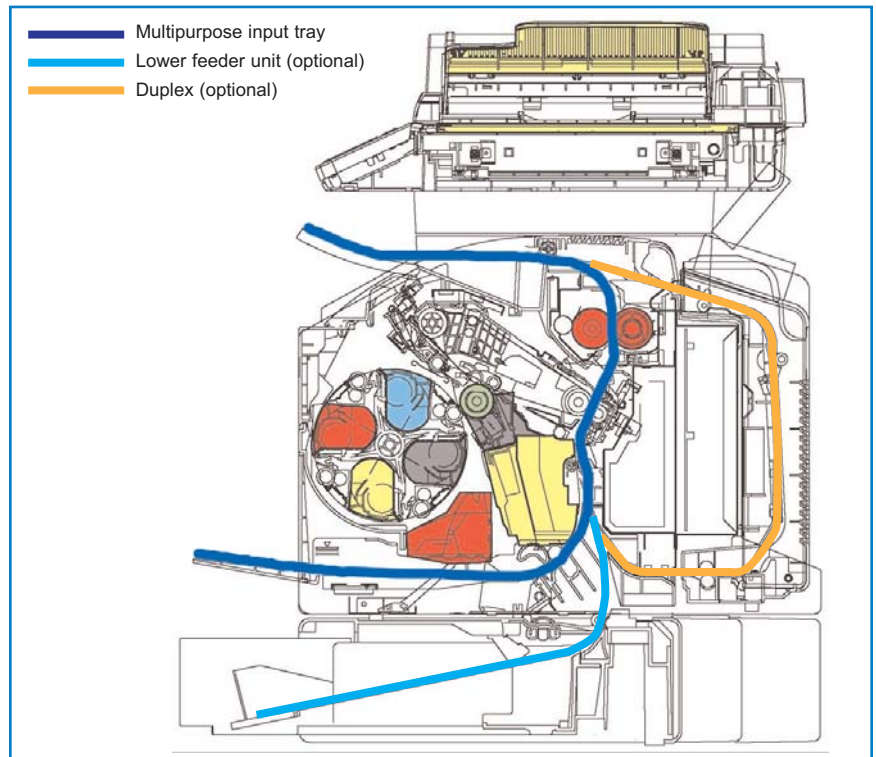


## Media Path

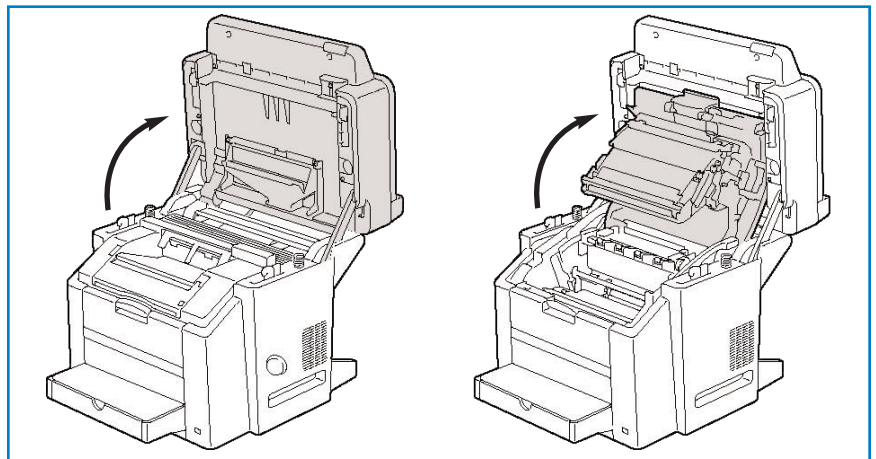


*The automatic document feeder also features a C-shaped media path.*

The magicolor 2480MF and 2490MF media path follows a C-shaped curve, allowing it to support thick stock.



*To remove a media jam, open the scanner unit and then the engine cover.*

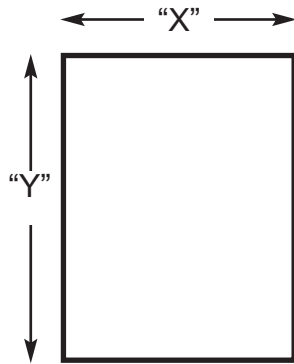


## Imageable Area

- Guaranteed print width—Up to 8.19" (208 mm)
- Guaranteed print length—Up to 13.4" (341.6 mm) color; up to 13.7" (347.6 mm) monochrome
- Non-printable area—0.16" (4 mm) from all page edges

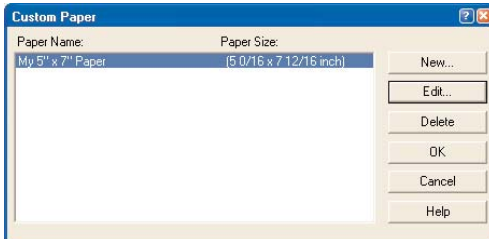
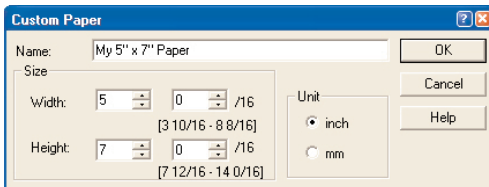
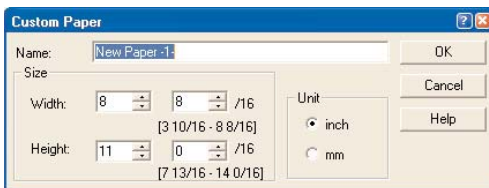


## Supported Media Sizes



The table at the right refers to X and Y dimensions of the media as diagrammed above.

Media Type & Size	x-Dimension	y-Dimension
<b>Cut-Sheet Paper</b>		
A4	210 mm	297 mm
A5	148 mm	210 mm
Executive	7.25"	10.5"
F4	210 mm	330 mm
Foolscap	8"	13"
G [Government] Legal	8.5"	13"
G [Government] Letter	8.5"	10"
Kai 16	185 mm	260 mm
Legal	8.5"	14"
Letter	8.5"	11"
Letter Plus	8.5"	12.7"
Photo 4x6	64"	6"
Photo 10x15	150 mm	100 mm
Statement	5.5"	8.5"
UK Quarto	8"	10"
Custom	3.6" (min) 8.5" (max)	5.8" (min) 14" (max)
<b>Envelopes</b>		
B5	182 mm	257 mm
C5	162 mm	229 mm
C6	114 mm	162 mm
Com 10	4.125"	9.5"
DL	110 mm	220 mm
Monarch	3.875"	7.5"
Yokei-0	120 mm	235 mm
Yokei-4	105 mm	235 mm
Kai 32	130 mm	185 mm
<b>Transparencies</b>		
A4	210 mm	297 mm
Letter	8.5"	11"
<b>Postcards</b>		
Double Postcard	148 mm	200 mm
J Postcard	100 mm	148 mm



Custom page sizes from 3.6" x 5.8" to 8.5" x 14" can be defined in the printer driver.





## Advanced Document Processing—Printing

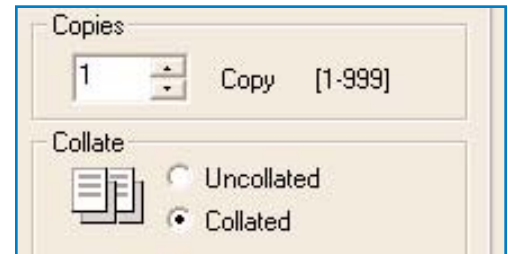
The magicolor 2480MF and 2490MF printer drivers provide several advanced document processing functions for printed documents:

- Printer-based electronic collation
- N-up printing
- 2-sided printing
- Form overlays
- Watermarks

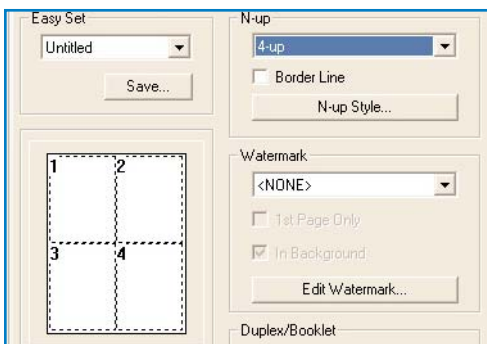
### [Printer-based electronic collation](#)

**Collation** refers to sorting multiple printed copies of a multi-page document into the proper order.

**Printer-based electronic collation** means that the document file is transmitted to the magicolor 2480MF or 2490MF only once, and the sorting is done at the all-in-one.



For example, if you want 2 collated copies of a 3-page document, on the Paper tab specify 2 copies and select “Collated.” The document file is transmitted to the magicolor 2490MF once, and the pages are printed in the order 1-2-3 (copy 1), 1-2-3 (copy 2).



*Use the N-up feature on the Setup tab to print 2, 4, 6, 9, or 16 pages on a single sheet.*

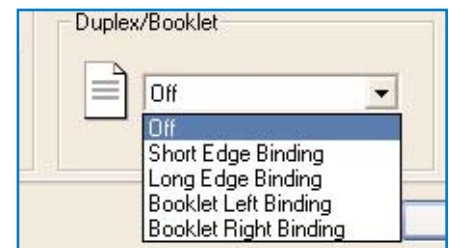
### [N-up printing](#)

The n-up option allows 2, 4, 6, 9, or 16 pages of a multi-page document to be printed on a single sheet of media. You can also add a border line around each page and specify the flow of the pages across the sheet.

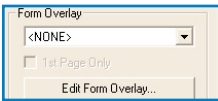
### [2-sided printing](#)

If an optional duplexer is not installed, 2-sided documents can be printed manually by printing one side, reinserting it in the input tray, and then printing the other side.

If an optional duplexer is installed, four automatic duplex options are available on the Setup tab: Short Edge Binding, Long Edge Binding, Booklet Left Binding, and Booklet Right Binding. The two Booklet options print pages that can be folded in half to create a booklet.



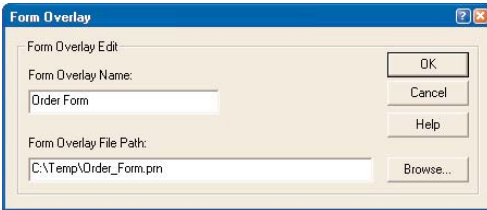




*Print form overlays on just the first or all pages of a document.*

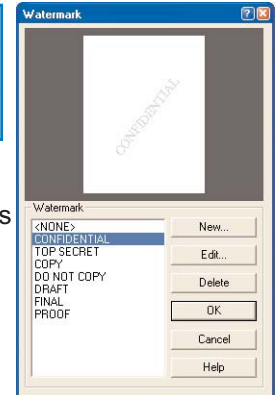
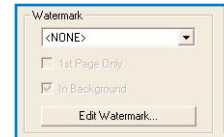
## Form overlays

A **form overlay** is a print file that is printed either on the first page or on all pages of a document. Form overlays are identified and enabled on the Paper tab.



## Watermarks

A **watermark** is a word or phrase that is repeated on each printed page. Common text watermarks such as “CONFIDENTIAL” and “DRAFT” can be added to a document—or a custom watermark can be created. The printer driver also includes selections for indicating the watermark’s font, style, size, color, placement, and angle. Watermarks are created, edited, and enabled on the Setup tab.



## Advanced Document Processing—Copying



*Collated and 2in1 copies are available via 1-touch keys on the control panel.*

The magicolor 2480MF and 2490MF control panels provide advanced document processing functions for copied documents:

- Copier-based electronic collation
- 2in1 copying
- 2-sided copying

### Copier-based electronic collation

Multiple copies of multi-page originals can be sorted into sets with the pages in the proper order by using the Collate key on the control panel. The entire document is scanned into memory, and then each copy is printed with its pages in the proper order.

### 2in1 copying

To save paper, use the 2in1 key on the control panel to copy two originals onto a single page. Note: 2in1 copying must be performed through the automatic document feeder, not from the flatbed glass.

### 2-sided copying

As with printing, 1-sided or 2-sided originals can be made into 2-sided copies either manually or automatically. To use the optional duplexer to make 2-sided copies, enable duplex printing via the Function key on the control panel. Two-sided copies can be made from the automatic document feeder or the flatbed glass.



*Both the flatbed and the automatic document feeder accept documents up to 8.5" x 14".*

## Advanced Document Processing—Scanning

---

Advanced document processing functions available when scanning depend upon the scanning method being used.

### [Scan from a PC](#)

When you scan from a PC via the USB interface, all document processing functions are available in the Twain or WIA driver available through the PaperPort SE application bundled with the magicolor 2400MF Series all-in-ones or through another graphics application.

### [Scan to Email](#)

When you scan to email via the Ethernet interface, in addition to specifying a scan resolution, you can also set the following features in the configuration menu. You can either identify default settings for all documents scanned to email or customize the settings for a particular document.

- Image Format—Select PDF or TIFF
- Coding (Compression) Method—Select MH (Group 3 encoding), MR (Group 3 2D encoding), or MMR (Group 4 encoding). Most fax machines are compatible with the MH coding method, which provides the lowest compression ratio. MMR provides the highest compression ratio, but not all fax machines are compatible with this coding method.

## Advanced Document Processing—Faxing

---

In addition to choosing a fax resolution, you can also set several other features in the configuration menu for transmitted and received faxes.

### [Transmitted Faxes](#)

- Scan Density—Lightness or darkness to be used when scanning the document for transmittal

### [Received Faxes](#)

- Reduction RX—Select whether documents longer than the paper installed in the machine should be reduced to the available media size, printed at full size and split onto multiple pages, or printed at full size with any part of the document that doesn't fit on the page being erased.



# Supplies

*The magicolor 2480MF and 2490MF all-in-ones use the same supplies as the other products in the magicolor 2400 and 2500 Series.*



*Cyan, magenta, yellow, and black (CMYK) toner cartridges.*

## Toner Cartridges

The four magicolor 2400MF Series toner cartridges (CMYK) are color-coded for error-free installation and feature an intelligent chip that stores information on toner levels for accurate supplies monitoring. (See “Supplies Monitoring,” later in this guide, for further information.)

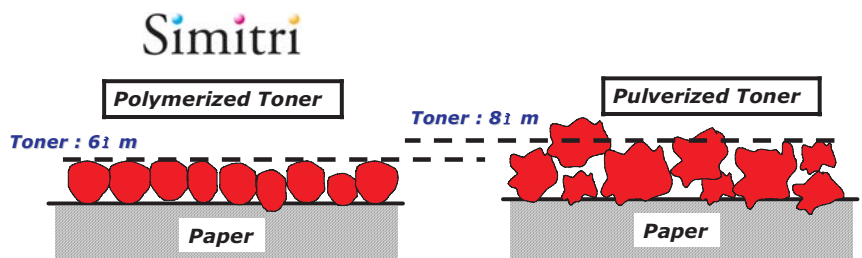
KONICA MINOLTA Simitri Polymerized Toner produces exceptional output. Its particles are smaller and more uniform in size and shape than conventional pulverized toner, providing finer lines, better halftones, and improved image quality. It also has a higher transfer efficiency than regular toner, further contributing to output quality while producing less waste toner. This means that less toner remains on the surfaces of the drum cartridges, transfer belt units, and rollers after a page has printed, which in turn means cleaner prints.

A lubricant encapsulated within the toner particles eliminates the need for fuser oil, meaning that you have one less consumable to buy. Polymerized Toner is also environment friendly, emitting less carbon acid gas (CO<sub>2</sub>), nitrogen oxide (NO<sub>x</sub>), and sulfur oxide (SO<sub>x</sub>) in the production process.

Always use toner identified as “Genuine KONICA MINOLTA.” The internal components of the magicolor 2400MF Series all-in-ones are specifically designed around the parameters of genuine KONICA MINOLTA Simitri Polymerized Toner. Although toner cartridges from other manufacturers may fit, using them will cause the magicolor 2480MF and 2490MF to initiate longer cleaning cycles (to protect itself from toners with unknown adhesion properties) and slower printing.

Be sure to match the toner cartridge and all-in-one “types.” In the Americas, 110V units use “Type AM” Genuine KONICA MINOLTA toner cartridges while 220V units use “Type EU.”

*KONICA MINOLTA Simitri Polymerized Toner particles are small and more uniform in size and shape than conventional pulverized toner particles. The result is finer lines, better halftones, and improved print quality.*





The drum cartridge includes the OPC drum and the waste toner box.

## Drum Cartridge

The drum cartridge includes the OPC drum and the waste toner box. The waste toner box captures excess toner during the printing process and prevents engine damage from loose toner particles. An agitation screw inside the waste toner box ensures efficient waste toner storage.

## In-box Supplies

The magicolor 2480MF and 2490MF each ship with one Black (yield up to 4,500 letter/A4 pages @ 5% coverage), Cyan, Magenta, and Yellow (yield up to 1,500 letter/A4 pages @ 5% coverage) Toner Cartridge and one full-capacity OPC Drum Cartridge.

## Replacement Supplies

Item	Yield*	Notes
Black, Cyan, Magenta, and Yellow Toner—High Capacity	4,500 pages	Continuous printing
Cyan, Magenta, and Yellow Toner—Standard Capacity	1,500 pages	Continuous printing
Drum Cartridge	45,000 pages	Monochrome, continuous printing
	10,000 pages	Monochrome, intermittent printing
	11,250 pages	Full color, continuous printing
	7,500 pages	Full color, intermittent printing

\*Supply yields are expressed as an average number of letter/A4 pages at 5% coverage. However, actual supply life depends on such variables as page coverage, page size, media type, continuous or intermittent printing, number of color planes, ambient temperature, and humidity. Optimal supply life is achieved through continuous printing (three or more pages per job). Intermittent printing (one page per job) reduces supply life. Maximum toner cartridge yield at coverage below 5% is 6,000 pages.



All supplies are conveniently accessed from the front of the magicolor 2400MF Series all-in-ones.





## Supplies Monitoring

Several methods for viewing supply levels are available:

- Control panel message window
- Machine status list (magicolor 2480MF) or configuration page (magicolor 2490MF)
- PageScope Web Connection (magicolor 2490MF)



Use the Display key on the all-in-one control panel to display the toner “gas gauges.”

### Control Panel Message Window

When the machine is functioning normally, press the Display key once to display a rough indication in the control panel's message window of the level in each toner cartridge.

The control panel also alerts you when a toner cartridge or the drum cartridge is nearing the end of its life and when it needs to be replaced. In each case, the two lines of the message display alternately in the message window.

Message	Meaning	Action
DRUM LOW	The drum cartridge is near the end of its life.	Prepare a new drum cartridge.
DRUM LIFE END CHANGE DRUM	The waste toner bottle in the drum cartridge is full.	Replace the drum cartridge immediately.
END OF LIFE CHANGE DRUM (magicolor 2480MF only)	The drum cartridge has reached the end of its life.	Replace the drum cartridge as soon as possible.
DRUM END (magicolor 2490MF only)	The drum cartridge has reached the end of its life.	Replace the drum cartridge as soon as possible.
(CMYK) TONER LOW	The indicated toner cartridge is low and should be replaced within about 200 pages.	Prepare a new toner cartridge.
TONER LIFE END CHANGE (CMYK) TONER	The indicated toner cartridge is empty.	Replace the toner cartridge immediately.
(CMYK) TONER EMPTY CHANGE (CMYK) TONER (magicolor 2480MF only)	The indicated toner cartridge is empty.	Replace the toner cartridge as soon as possible.
(CMYK) TONER EMPTY (magicolor 2490MF only)	The drum cartridge has reached the end of its life.	Replace the drum cartridge as soon as possible.







# All-in-One Management

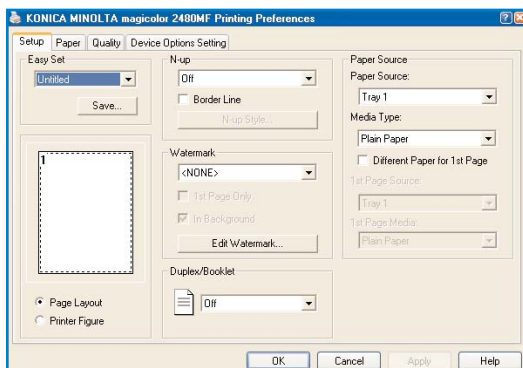
*Complete control of the magicolor 2400 Series all-in-ones is in your hands.*

## Convenient Management Tools

Use the following tools to manage the magicolor 2480MF and 2490MF. All functions are described in detail in the electronic documentation.

- Printer drivers
- Control panel
- PageScope Web Connection
- Electronic documentation

The magicolor 2480MF *Utilities & Documentation* and the magicolor 2490MF *Drivers & Documentation* CD-ROM both feature an auto-install interface that automatically guides you step-by-step through the installation process.



*The magicolor 2480MF and 2490MF printer drivers feature a tabbed layout that conforms to Microsoft standards, making them very simple to use.*

## Printer Drivers

The magicolor 2480MF printer drivers support Windows XP/2000/Me/98SE and are Microsoft-certified. They are available in 8 languages on the CD-ROM: English, Czech, French, German, Italian, Polish, Portuguese (Brazilian), and Spanish.

The magicolor 2490MF printer drivers support Windows Server 2003/XP/2000/Me/98SE and are Microsoft-certified. They are available in 15 languages on the CD-ROM: English, Chinese Simplified, Chinese Traditional, Czech, French, German, Hungarian, Italian, Japanese, Korean, Polish, Portuguese (Brazilian), Russian, Slovak, and Spanish.

You must install a printer driver on each computer that will print to the magicolor 2480MF or 2490MF.



magicolor 2490MF only

magicolor 2490MF only

The magicolor 2480MF and 2490MF control panels are identical with the following exceptions: the magicolor 2490MF (shown above) has two additional keys on the right side of the panel (Scan and Fax) as well as an additional fax keypad on the right side of the panel with thirteen keys and one LED (Auto RX).

## Control Panel

The magicolor 2480MF and 2490MF control panels have a 2-line, 20-character LCD window that displays copy settings, machine status (including status and error messages), menus and settings options in the configuration menu, and toner supply levels.

### LEDs

Six LEDs indicate machine status.

Ready	Green	Red
Auto RX (magicolor 2490MF)	Automatic fax reception is selected.	N/A
Copy	The machine is in Print/Copy mode.	N/A
Error	N/A	The machine requires attention. This is usually accompanied by a status message in the message window.
Fax	The machine is in Fax mode.	N/A
Scan	The machine is in network Scan mode.	N/A
Start	The machine is ready to use.	The machine is warming up or printing, or an error has occurred.

### Configuration Keys

Six keys are used for machine configuration.

Menu/Select	Enters the configuration menu; selects the displayed menu or setting.
Left and Right Keys	Move left and right through the settings in the configuration menu; specify copy density in Copy mode.



### Configuration Keys (cont.)

Up and Down Keys	Move up and down in the configuration menu; adjust the reduce/enlarge ratio in 1% increments in Copy mode.
Cancel/C Key	In the configuration menu, cancels the currently displayed setting or exits from the displayed menu; in Copy mode clears the specified number of copies.
Stop/Reset Key	Exits the configuration menu or stops the current process.

### Copy Function Keys



Use the Start - B&W and Start - Color keys to make copies from the flatbed glass or the automatic document feeder.

Copy Key	Enters Copy mode.
2-in-1 Key	Specifies that 2 originals should be copied onto 1 page.
Collate Key	Sorts multiple copies into sets.
Function Key	Allows the media tray and/or duplex setting to be specified for copying if an optional lower feeder and/or duplex option are installed.
Light/Dark Key	Adjusts the brightness (density) of a copy.
Numeric (0-9) Keys	Specifies the number of copies to be made (Note: The * and # keys are not used.)
Quality Key	Selects the type of document to be copied and the copy resolution.
Reduce/Enlarge Key	Sets the size of the copy (50%-200%).
Start - B&W Key	Makes a black and white (monochrome) copy.
Start - Color Key	Makes a color copy.
Stop/Reset Key	Stops the current process.

### Scan Function Keys (magicolor 2490MF)

Scan Key	Enters Scan mode, so a document can be scanned to email over the network.
Stop/Reset Key	Stops the current process.

### Fax Function Keys (magicolor 2490MF)

Fax Key	Enters Fax mode.
Function Key	Enters Function mode and provides access to advanced fax processes.





### Fax Keys (cont.)

01–09 Keys	Registers and recalls one-touch dial numbers.
Numeric (0-9) Keys	Used to enter numbers, such as fax numbers, and letters, such as names.
On Hook Key	Sends and receives fax transmissions with the receiver on the hook.
Redial/Pause Key	Recalls the last number dialed or, if a number is being dialed, inserts a pause.
Resolution Key	Adjusts the image quality of fax documents.
Speed Dial Key	Recalls a speed dial number.
Start Key	Starts a fax transmission or reception.
Stop/Reset Key	Stops the current process.

### Other Keys

Display Key	Toggles the control panel message window between the main screen (which displays copy settings), the toner supply screen, fax transmission results and, if applicable, the error message screen.
TC Change Key	Prepares the machine for toner replacement.

### PageScope Web Connection (magicolor 2490MF)

The magicolor 2490MF has an embedded web page that allows anyone on the network to retrieve real-time status information about the machine as well as configure its settings from your desktop. This feature, PageScope Web Connection, is accessible through your existing web browser.

PageScope Web Connection provides answers to such questions as these:

- How much toner is there in each toner cartridge?
- What size and type of media is currently installed in each input tray?
- What are the machine's network configuration settings?
- What fax speed dials have been set?



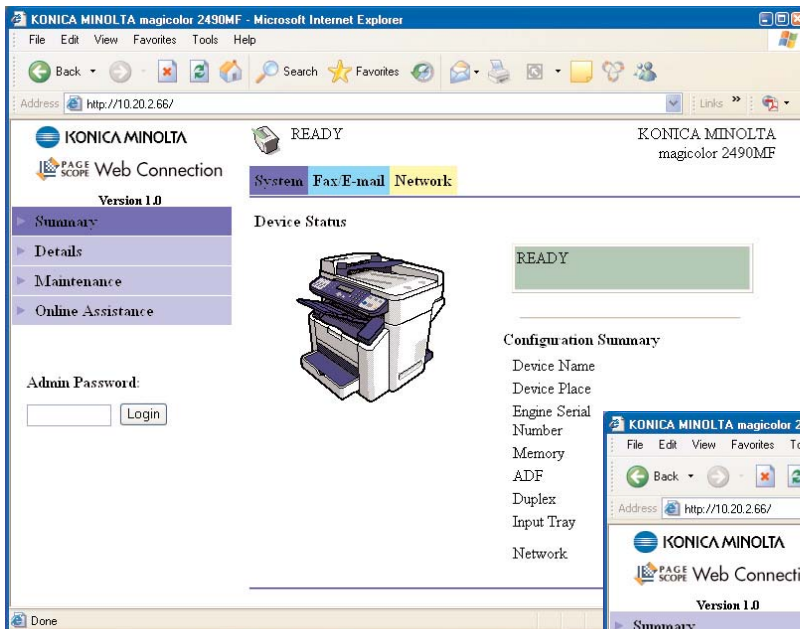


PageScope Web Connection information is divided into three tabs:

- ❑ **System**—The System tab provides the current status of the magicolor 2490MF (for example, READY, PRINTING, TRAY 1 EMPTY, C TONER LOW); a configuration summary; details about the size, type, and status of media in each tray; engine and controller ROM versions; specifics about the Ethernet network interface; maximum life and percentage still available for each consumable; print, copy, and scan/fax counters; and details about where to obtain online assistance.
- ❑ **Fax/Email**—The Fax/Email tab provides lists of available one-touch, speed, and group dials.
- ❑ **Network**—The Network tab provides further information about the Ethernet network interface.

**Administrator Mode**—On any page, you can type the administrator password and click the Login button to enter Administrator Mode.

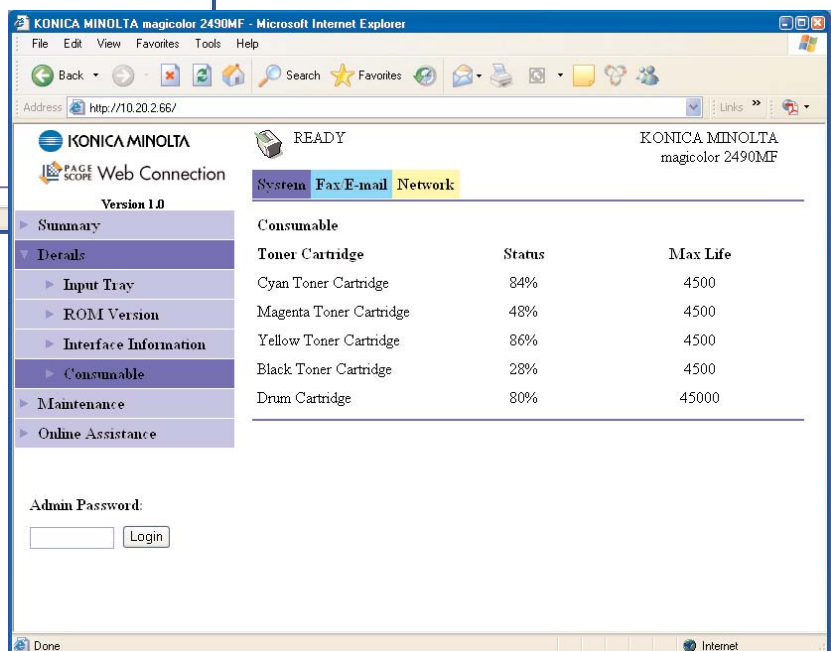
In this Administrator mode you can change a number of configuration settings remotely (for example, network and email settings) as well as change the PageScope Web Connection password.



The Summary page on the System tab provides the current status of the magicolor 2490M as well as an overview of its configuration.

The Details/Consumable page on the System tab lists the maximum life and percentage of life currently remaining for each consumable.

On any page, type the admin password and choose Login to enter administrator mode and change machine configuration.





**magicolor® 2490MF**  
**Quick Guide**

KONICA MINOLTA

1760563-001A      4556-9623-00

Item	Name	Function
1	Redial/Pause key	Recalls the last number dialed Inserts a pause when a number is dialed
2	Auto RX indicator	Lights up when the automatic reception function is selected
3	Resolution key	Adjusts the image quality of the fax documents
4	Speed Dial key	Recalls a speed dial number
5	On hook key	Sends and receives transmissions with the receiver on the hook
6	One-touch dial keys	Registers and recalls one-touch dial numbers
7	Function key	Specify tray, duplex, IC card copy, and fax settings
8	Error indicator	Indicates an error condition
9	Display key	Use to check the machine status and settings
10	Quality key	Select type of document to be copied and the copy resolution
11	2in1 key	Specify that two originals be copied onto one page
12	Collate key	Sort multiple copies into sets
13	Light/Dark key	Adjust the brightness of the copy
14	Reduce/Enlarge key	Set the size of the copy
15	Message Window	Displays settings, menus, and messages
16	▲/▼ keys	Move up and down through menus, options, or choices
17	◀/▶ keys	Move left and right through menus, options, or choices
18	Menu Select key	Enter configuration mode or select a setting
19	Cancel/C key	Clears the specified number of copies
20	TC Change key	Switches to the first screen of a menu item or to the main screen
21	Keypad	Prepare the printer for toner replacement Use to specify the desired number of copies Use to type in fax numbers, email addresses, and names of recipients
22	Fax key/LED	Enter fax mode
23	Scan key/LED	Enter scan mode (only network)
24	Copy key/LED	Enter copy mode
25	Start (Color) key/LED	Start a color copy
26	Start (B/W) key/LED	Start a monochrome copy or fax
27	Stop/Reset key	Returns the settings to their defaults and stops functions

- 1 -

## Electronic Documentation

Several useful manuals are included on the magicolor 2480MF *Utilities & Documentation* and magicolor 2490MF *Drivers & Documentation* CD-ROMs:

### ❑ Installation Guide

This short, heavily illustrated manual describes how to unpack and set up the magicolor 2480MF or 2490MF and then install the drivers and utilities.

### ❑ User's Guide

This manual provides complete information about printing, copying, scanning, and maintaining the magicolor 2480MF or 2490MF.

### ❑ Facsimile User's Guide (magicolor 2490MF)

This manual provides complete information about using the magicolor 2490MF as a standalone fax machine.

### ❑ Quick Guide

This guide provides a brief overview of the control panel, copying and scanning documents, replacing consumables. The magicolor 2490MF *Quick Guide* also provides an overview scan to email and fax procedures.

**Copy**

Document type: MIX x1.00 Status

Zoom ratio: 1

Copies: 1

Density: Paper tray / Paper size

1 sheet

max. 50 sheets (60-100 gsm) (16-34 lb)

Metric (millimeter)    Inch

0.50    0.54  
0.70    0.64  
0.81    0.78  
1.00    1.00  
1.18    1.20  
1.41    1.54  
2.00    2.00

Reduce/Enlarge

**For ADF only**

USA and Canada: Zoom = 0.64  
Other countries: Zoom = 0.70

MIX x.    1  
Status

2 in 1 copying and collated copying cannot be combined.

2 digits

Quality

MIX TEXT PHOTO

Collate

2 in 1 copying and collated copying cannot be combined.

Start

Attach the sleeve that comes with the Quick Guides to the side of the all-in-one, so an overview of basic procedures will always be at hand.

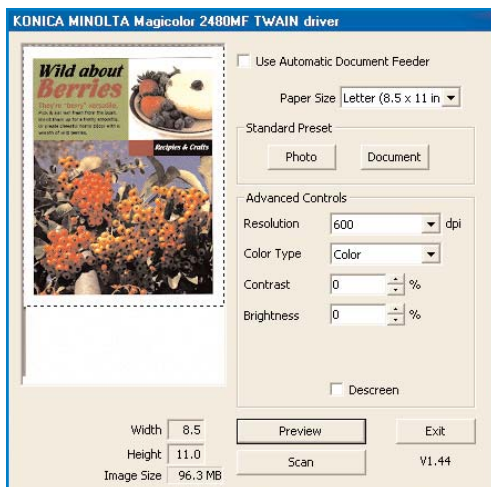
These manuals are provided in Adobe PDF format. With the free Adobe Reader, you can easily display these manuals on the computer screen, enlarge any illustrations you need to see close up, easily search for a certain word or phrase, or print part or all of the manuals. In addition, these electronic manuals can be easily stored on the PC's hard disk or in a convenient place on the network, so they're only a click away when needed.

All of the documentation is also posted on the KONICA MINOLTA PRINTING SOLUTIONS U.S.A. Service & Support website at [printer.konicaminolta.com/support](http://printer.konicaminolta.com/support)



# Scanning

Scan from a PC via the USB interface or, with a magicolor 2490MF, scan to email via the network.



The Twain driver provides several functions to customize scans.

## Scanning from a PC with PaperPort SE

The magicolor 2400MF all-in-ones and PaperPort SE work together to provide an easy way to convert paper documents to digital documents via the USB interface. Documents and photographs can be scanned using either the TWAIN or WIA scan driver. Both are included on the CD-ROMs with the 2480MF and 2490MF printer drivers and are installed on the PC when the magicolor printer drivers are installed.

### [Saving scanned files](#)

Scanned files can be saved in PDF, JPEG, TIFF, and other common file formats.

### [Touching up images](#)

Once a document has been scanned, PaperPort SE provides a number of tools that allow it to be further customized. Image files (such as PDF, BMP, JPEG, and TIFF) can be imported directly into PaperPort SE for customization.

Image-editing tools include Rotate, Straighten and Auto Straighten, Enhance and Auto Enhance, Sharpen, Remove Red Eye, Crop, Erase, Remove Stray Dots, and Improve Lines.

### [Annotating pages](#)

The annotation tools in PaperPort SE allow you to add notes and text, highlight text, draw lines and arrows, and stamp bitmap images on a page. Annotations added to PDF and PaperPort Image (.max) files can be edited at a later date while annotations added to other image files become a permanent part of the image.





## Converting Scanned Images to Editable Text with PaperPort SE

Scanned text documents can be easily converted to editable text simply by dragging and dropping them to a word processing program (such as Word). PaperPort SE automatically processes the scanned document, using its Optical Character Recognition (OCR) functionality, and then opens the editable text in the word processing program.

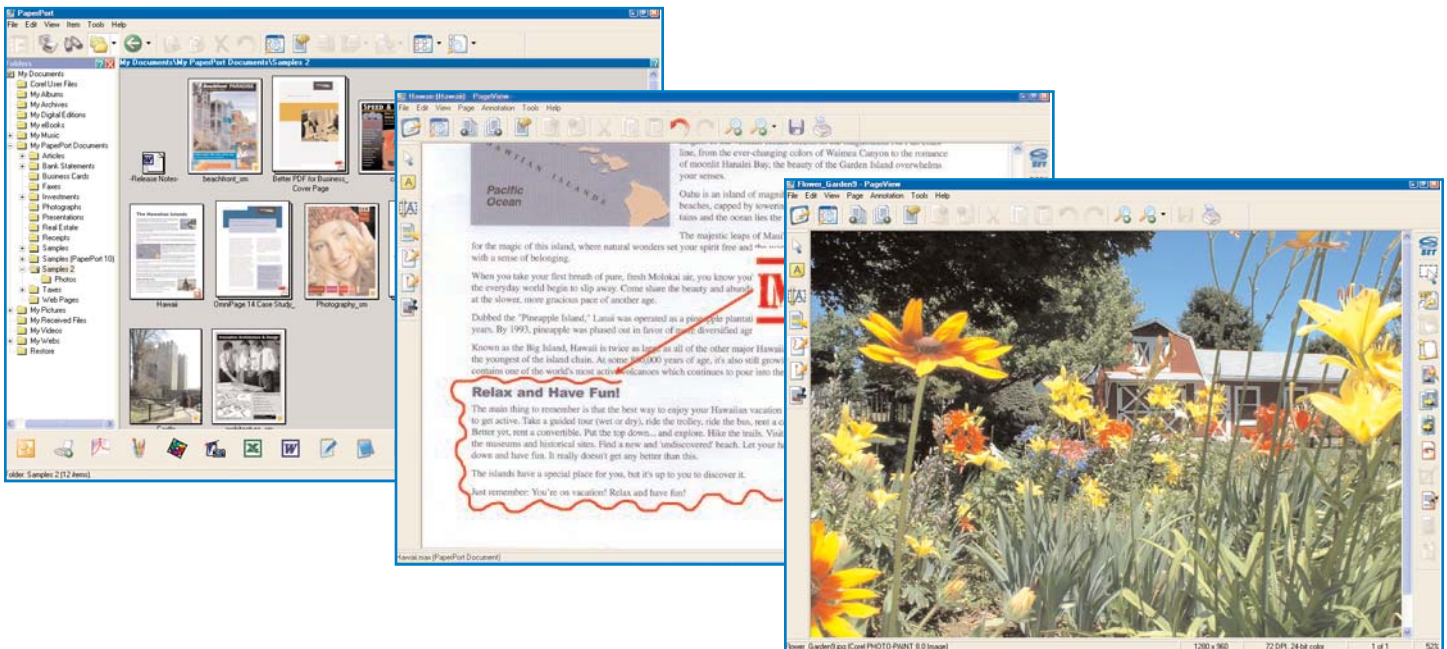
## Organizing Image Files with PaperPort SE

The PaperPort SE visual interface makes it easy to visually organize scanned documents, digital photographs, and other image files.

The default file folders can be copied, moved, rearranged, renamed, and color coded for easy identification and classification, and new file folders can be added. Image files can be moved to any folder simply by dragging and dropping.

Once items have been organized into file folders, they can be located using the PaperPort SE SimpleSearch feature, which allows files to be searched for by name, author, added comments or keywords, and annotation text.

# PaperPort SE





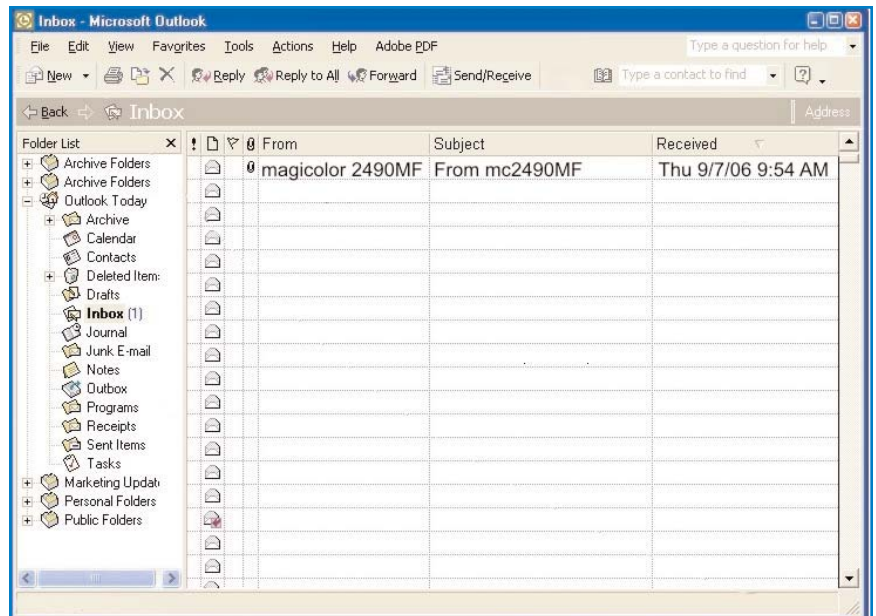
## Scanning to Email

Documents and photos can be scanned in detailed 24-bit color over the network directly to email for sharing with one or more recipients throughout the world. Scan single- or multiple-page documents up to 8.5" x 14" via the flatbed or automatic document feeder. Scanned files can be emailed in either PDF or TIFF format. Use the speed dial keys to select recipients quickly.

Scanning to email is a simple procedure:

1. Insert the document (flatbed or automatic document feeder).
2. Press the Scan key and then specify the recipient's email address by using a one-touch or speed dial number on the fax keypad, or by directly entering it on the numeric keypad.
3. Press the Start key.
4. Receive the email.

The email (with the scanned file attached) arrives from the default sender (magicolor 2490MF).



*When scanning a document to email, you can either use the default scan settings or customize them for a specific document before you press the Start button to begin the process.*



# Faxing

Take control over digital documents.

## Using the magicolor 2490MF as a Standalone Fax

The magicolor 2490MF provides standalone fax 33.6 Kbps Super G3 fax capability. For ease of use, the following time-saving features are available for sending faxes:

- 9 one-touch dials
- 9 group dials with 50 stations per group
- 100 speed dials
- 125 broadcast stations

## Memory Reception

To ensure that the machine doesn't run out of memory when receiving large documents, 4 MB of fax memory is available. This also allows one or more confidential faxes, up to a total of approximately 250 pages, to be stored in fax memory until a specified time (for example, 9:00 am) or until memory reception is turned off. A password can be set to specify the daily starting time and ending time for memory reception.

## Fax Reports

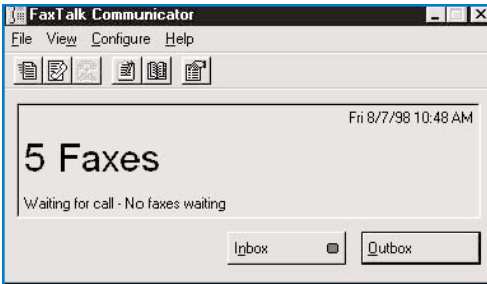
Three types of reports about fax processes are available:

- Activity Report—Can be printed manually or automatically after every 60 transmissions/receptions, listing their results.
- TX Result Report—Can be printed manually, automatically after every transmission, or only after when transmission error occurs.
- RX Result Report—Can be printed manually, automatically after every reception, or only when an error occurs.

ACTIVITY REPORT												
NO.	SESSION	DATE	TIME	TX/RX	DESTINATION	STATION	PAGE	DURATION	MODE	RESULT		
01	0001	AUG 31	15:06	TX	94334300	000	0000m100s	OK	OK	OK		
02	0002	AUG 31	17:05	TX	94334866	000	0000m100s	OK	OK	OK		
03	0003	AUG 01	08:15	TX	91030040000000000000	000	0000m100s	F-MAIL	OK	OK		
04	0004	AUG 01	15:45	TX	91030040000000000000	000	0000m100s	F-MAIL	OK	OK		
05	0005	AUG 01	15:07	TX	91030040000000000000	000	0000m100s	F-MAIL	OK	OK		
06	0006	AUG 01	15:03	TX	91030040000000000000	000	0000m100s	F-MAIL	OK	OK		
07	0007	AUG 02	11:14	TX	91030040000000000000	000	0000m100s	OK	OK	OK		
08	0008	AUG 02	11:18	TX	91030040000000000000	001	0000m100s	OK	OK	OK		
09	0009	AUG 02	11:44	TX	91030040000000000000	000	0000m100s	OK	OK	OK		
10	0010	AUG 02	11:48	TX	91030040000000000000	001	0000m100s	OK	OK	OK		
11	0011	AUG 03	01:25	TX	91030040000000000000	000	0000m100s	OK	OK	OK		
12	0012	AUG 04	01:25	TX	91030040000000000000	000	0000m100s	OK	OK	OK		
13	0013	AUG 08	11:13	TX	91030040000000000000	000	0000m100s	F-MAIL	OK	OK		
14	0014	AUG 08	11:54	TX	91030040000000000000	000	0000m100s	F-MAIL	OK	OK		
15	0015	AUG 08	11:46	TX	91030040000000000000	000	0000m100s	F-MAIL	OK	OK		
16	0016	AUG 08	11:50	TX	91030040000000000000	000	0000m100s	F-MAIL	OK	OK		
17	0017	AUG 08	11:58	TX	91030040000000000000	001	0000m100s	F-MAIL	OK	OK		
18	0018	AUG 10	16:01	TX	91030040000000000000	001	0000m100s	OK	OK	OK		
19	0019	AUG 22	15:11	TX	91030040000000000000	000	0000m100s	OK	OK	OK		
20	0020	AUG 24	10:05	TX	91030040000000000000	001	0000m100s	OK	OK	OK		
21	0021	SEP 05	14:26	TX	91030040000000000000	000	0000m100s	OK	OK	OK		
TOTAL				TX	000001	0000m100s	000001	0000m100s	OK	OK		
				RX	000004	0000m100s	000004	0000m100s	OK	OK		

The Activity Report lists fax transmissions and receptions, date and time of activity, number of pages, duration of activity, mode, and result—OK or NG (No Good).





The main window changes, depending on the type of modem installed in the PC.

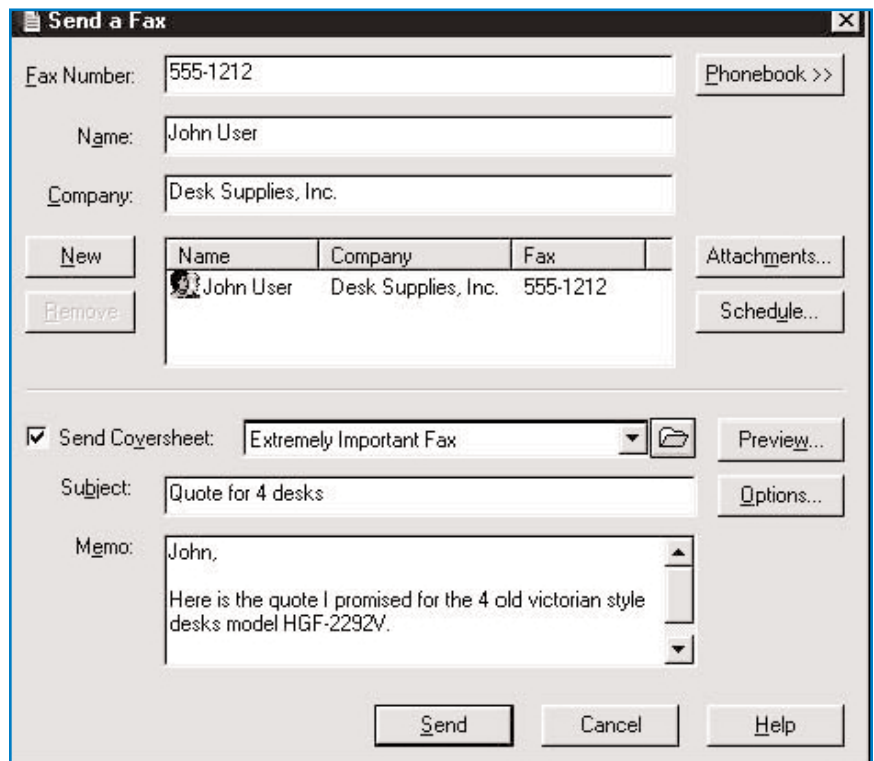


## Sending and Receiving Digital Documents with FaxTalk Communicator

The magicolor 2480MF and 2490MF include FaxTalk Communicator, PC Fax software which provides the tools needed to manage fax communications at the PC.

This software allows you to send and receive digital faxes, drag and drop scanned documents from PaperPort SE, automatically print received faxes, view and annotate faxes, and view fax logs.

In addition, with the appropriate modem, the PC can be used as a speakerphone and answering machine.



Faxes can be sent from FaxTalk Communicator (the Send a Fax dialog box is shown above), from any Windows application (print to the FaxTalk Communicator "printer"), or directly from Windows Explorer (right-click on a file name or icon and then from the pop-up menu choose Send To > FaxTalk Recipient).





## Using the Send Log

The Send Log contains information about faxes that you have sent from FaxTalk Communicator. You can track the status of the faxes, view a sent fax, print hard copy records of transactions, and resend faxes if necessary.

Recipient	Number	Date	User ID	Status	Pages	Duration	Speed
Harry Marsh	555-1212	8/7/98 3:41 PM	A Happy FaxTalk User	Sent	3	5:06	14400
Jack Morris	521-555-1212	8/7/98 2:42 PM	Crossroads Ltd.	Sent	1	0:46	14400
Greg Norda	451-0594	8/7/98 2:18 PM	Internet World	Sent	5	8:10	14400

Buttons: Resend, Delete, Close

## Using FaxTalk Communicator with PaperPort SE



*Five typical icons in the PaperPort SE Send To bar. The fax icon is the second from the left.*

The Send To bar at the bottom of the PaperPort SE desktop provides a series of icons for programs that you can use with PaperPort SE.

If you install FaxTalk Communicator before you install PaperPort SE, and if FaxTalk Communicator is the only PC Fax program you have installed, PaperPort SE will automatically equate the fax icon in the Send To bar with FaxTalk Communicator. Otherwise, you must use the PaperPort SE New Program wizard to do so (from the PaperPort SE Tools menu choose New Program Link, and then follow the instructions on the screen).

Once the fax icon is equated with FaxTalk Communicator, you can drag and drop documents scanned in PaperPort SE to FaxTalk Communicator for easy faxing.



# Camera Direct Photo Print

*Print directly from a PictBridge-enabled digital camera—no PC or special software required.*

## USB Host Port with PictBridge Compatibility

Using the USB 1.1 Host Port, conveniently located on the front of the magicolor 2400MF Series all-in-ones, you can print photographs directly from any PictBridge-enabled digital camera with no PC or special software required. Supported functions include the following:

- 1-up, 2-up, 3-up, 4-up, 6-up, or 8-up photos
- Batch print
- Fit-to-page
- Index prints
- Multiple copies
- Plain paper or photo media
- Sizes up to 8.5" x 11", including 4" x 6" borderless prints
- Varied or duplicate images on the same page

Depending on the camera model, other functions may also be supported.



3. Click "Print" in the camera user interface.

2. Select the photo(s) to be printed.

1. Connect the digital camera to the USB 1.1 Host Port.



# Color Control

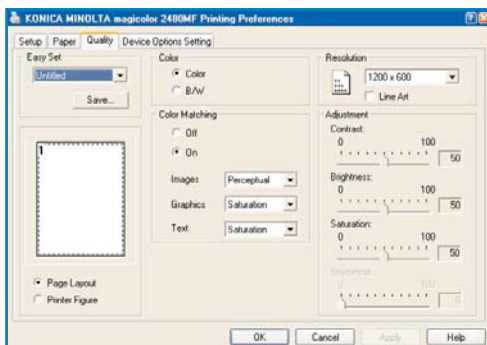
*Get great color without great effort.*

## Professional Color Tools for Novices and Professionals

The magicolor 2400MF Series all-in-ones are designed with the color novice in mind. They feature an internal color matching system that automatically selects the proper color model based on the specific elements on any given page.

Professional color users will benefit from the ICC device profiles that allow them to adjust color.

In addition, the magicolor 2480MF and 2490MF feature enhanced Automatic Image Density Control (eAIDC), which produces consistent color from print to print.



*Driver-based color matching selections are easy to access and use.*

*Fine-tune color output with the slider-bar color adjustments.*

## Automatic ICC-Based Color Matching

The magicolor 2480MF and 2490MF printer drivers include an ICC-based color matching system that provides single-button controls for automatic correction of color files. Using built-in ICC profiles and an sRGB color space, this printer-resident system makes it as easy to get great color from a PowerPoint presentation as from a desktop publishing application such as QuarkXPress 6.5 or InDesign. Both novice and professional color users will find these color matching methods easy to navigate.

When the color matching system is activated, three different color rendering methods for three different types of page elements (graphics, images, and text) are available:

- Colorimetric**—This is the best choice for documents that contain solid colors. The magicolor 2480MF and 2490MF automatically adjust color settings for consistent, predictable output.
- Perceptual**—This is the ideal selection for documents with photographic images. It's tuned to enhance images for high-quality proofs.
- Saturation**—This is the best selection for documents containing brightly colored text and graphics.

The custom selections in the printer driver can be used to fine-tune the color output manually. The convenient slider bars make it easy to adjust image contrast, brightness, saturation, and sharpness.



## ICC Device Profiles

For hands-on color management, nine ICC color profiles are included with the magicolor 2480MF and 2490MF.

- 2400 x 600 dpi—Colorimetric
- 2400 x 600 dpi—Perceptual
- 2400 x 600 dpi—Saturation
- 1200 x 600 dpi—Colorimetric
- 1200 x 600 dpi—Perceptual
- 1200 x 600 dpi—Saturation
- 600 x 600 dpi—Colorimetric
- 600 x 600 dpi—Perceptual
- 600 x 600 dpi—Saturation

Whether you're printing with Windows ICM or through an application using ICC color matching, you'll find these profiles helpful in adjusting the color to meet your specific requirements. Those using separate color matching software should choose the profiles with Perceptual color rendering.

## Enhanced Automatic Image Density Control (eAIDC)

From day to day, and from one consumable change to the next, toner density may change, ultimately affecting color consistency. To maintain color consistency and ensure predictable color without intervention, the magicolor 2480MF and 2490MF automatically perform enhanced Automatic Image Density Control at the following times:

- When the machine is turned on.
- When the machine is turned on or exits from Energy Saver mode after a predetermined number of pages have been printed (200 pages since the last quick AIDC or 1000 pages since the last full AIDC).
- After a consumables change.



*eAIDC provides consistent color from page to page.*





# Options

*Extras all productive offices can use.*

---

## Duplex Option

---

You can manually duplex on the magicolor 2480MF and 2490MF by printing or copying one side of a page, reinserting it in the input tray, and then printing on the other side.

However, the automatic duplex option provides more convenient two-sided printing and copying. It installs on the back of the machine, and doesn't change the footprint.



## Lower Feeder Unit

---

An optional 500-sheet lower feeder unit increases the magicolor 2400MF Series all-in-ones' paper input capacity to 700 sheets. The lower feeder unit accepts letter- or A4-size paper and attaches conveniently underneath the printer. Adding this option not only reduces the frequency of paper refills, but also provides the option of making more than one type of media available at all times in the machine.



## External 10/100BaseTX Ethernet NIC (magicolor 2480MF)

---

The silex technology SX-1000U Device Server supports TCP/IP for Windows XP/2000. This option is available for only the magicolor 2480MF. The magicolor 2490MF provides built-in Ethernet support.



## Extended Warranties

---

KONICA MINOLTA offers additional warranty options for the magicolor 2480MF and 2490MF, including 1- and 2-year extended exchange warranties, and a 1-year exchange post warranty.



**KONICA MINOLTA**

KONICA MINOLTA PRINTING SOLUTIONS U.S.A., INC.  
One Magnum Pass  
Mobile, AL 36618  
USA

[printer.konicaminolta.com/usa](http://printer.konicaminolta.com/usa)

## Free Manuals Download Website

<http://myh66.com>

<http://usermanuals.us>

<http://www.somanuals.com>

<http://www.4manuals.cc>

<http://www.manual-lib.com>

<http://www.404manual.com>

<http://www.luxmanual.com>

<http://aubethermostatmanual.com>

Golf course search by state

<http://golfingnear.com>

Email search by domain

<http://emailbydomain.com>

Auto manuals search

<http://auto.somanuals.com>

TV manuals search

<http://tv.somanuals.com>