

KONICA 7022. TURNS YOUR OFFICE INTO A MULTI-OFFICE.



Your customers expect utmost flexibility from you? Fine, because you print, copy, scan, fax, and e-mail with the **KONICA 7022**.

DOCUMENT PROCESSING*

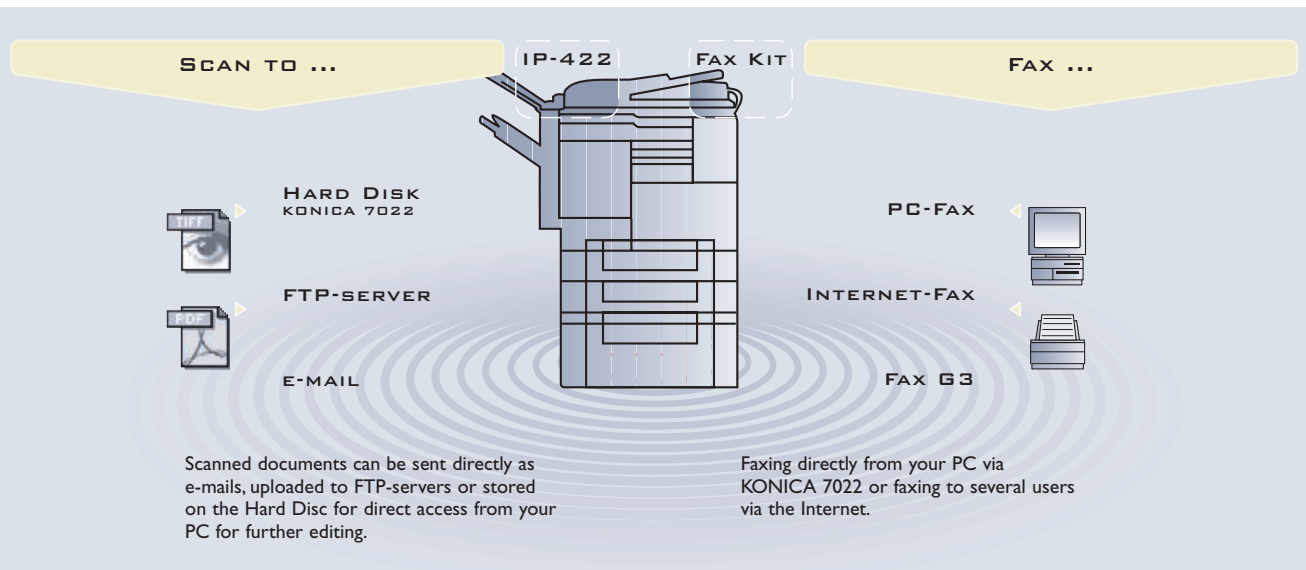


- High paper capacity of up to 2,550 sheets
- Paper sizes A5 to A3
- Finishing & multi-position stapling
- Direct, unlimited duplexing (standard)
- Extensive variety of image & document editing features
- Excellent image quality with KONICA polymerized toner

MULTI-COMMUNICATION*



- Fast G3 fax
- Printing & scanning with 600 x 600 dpi
- Scan-to-Email /-HDD /-FTP
- PC-Fax & Internet Fax



The new KONICA 7022 Document Communication System combines innovative document and information technologies in one ultra-compact system. Without time-consuming delays your team or office can now take care of all tasks around the distribution of documents.

Some multi-office examples: Charts, reports, brochures, letters and presentations.

Created on the computer, with illustrations or photos scanned via the KONICA 7022, printed and automatically stapled in the optional finisher.

You want to quickly fax or e-mail a few pages from your documentation? Also no problem, thanks to the various optional extensions available for KONICA 7022.



SPEED*

- 22 A4/14 A3 pages per minute
- Simple & straightforward operation
- Optimised productivity and flexible output management
- Fast original feeding with 30 opm
- Programmable output trays



SPECIALS*

- KRDS Remote Diagnostic System: remote hardware diagnosis and software updates via integrated fax kit, PSTN, or GSM modem
- KPPM cluster printing: connection of various KONICA Document Systems to one cluster
- KONICA paperport: efficient management of documents, images and web pages, including intelligent scan and image editing functions



NETWORK CONFIGURATION*

- IP-011 and Easycom Xpress NIC
- IP-422 with standard NIC: PCL5e compatible, PostScript 3 available

*Functionality depends on system configuration.

Type
Desktop model with fixed platen

Process
Electrostatic laser copy

User Operation
Touch sensitive display with detailed user instructions, Check/Help Mode, Proof Copy

Copies/prints per minute
22 pages (A4), 14 pages (A3)

FCOT
5 seconds

Warm-up time
30 seconds or less

Original Processing/Feeding
Electronic RDH, Face-up, 1-to-N

Resolution
Scanning/printing 600 x 600 dpi

Image Memory
32 MB standard, 288 MB max. (ie. 32MB + 256 MB)

Exit Tray
100 sheets

Copy/Print Quantity Selection
Up to 999

Exposure
Automatic or Manual, 2 user sets

Magnification
Fixed Ratios: 1:1; Reduction: 0.71/0.82/0.86 Enlargement: 1.15/1.22/1.41; 3 special ratios (user setting), Zoom 25%–400%, adjustable in 1% increments, bi-di zoom

Paper Sizes
A5–A3

Paper Supply
Two front-loading universal trays with 500 sheets each; multi-sheet bypass for 50 sheets

Paper Weight
60–90 g/m² (from tray); Special paper 50–130g/m² (from bypass)

Duplexing (standard)
Direct unlimited duplexing, A5–A3

Special Functions
Job Reservation (5), Memory Copy, Booklet Mode, Image Rotation, Electronic Sorting (without finisher), Image Repeat, Image Insert, 2-in/4-in/8-in1, Density Shift, Original Quality Non-Image Area Erase, Auto Layout, Reverse Copying, Chapter/ Cover & Sheet Insertion, OHP-Interleave, Image Shift, Reduce & Shift, Book Copy, Frame & Fold Erasure, Mixed Originals (with DF), Stamp, Watermark, Job Memory, Copy Interrupt, APS, ATS, Auto Reset, Auto Shut Off, Power Saving, Self Diagnostic System, Electronic Key Counter (128 codes), Weekly Timer, List Report, Fail Safe Function, KRDS, customisable Application Screen (key operator), etc.

Power Supply
230V, 50Hz

Dimensions (WxDxH)
590 x 595 x 730 mm (main body)

Weight
approx. 73 kg (main body)

Optional Accessories

Option	Description
CV-109	Platen cover
DF-314	Document feeder, 50 sheets A5–A3, 35–135 g/m ² , 30 OPM
DK-109 or LT17	Pedestal
DB-210	Drawer base unit with two front-loading universal trays with 500 sheets each, 60–90 g/m ²
DB-410	LCT with 1,500 sheets, A4, 60–90g/m ²
IT-101	Inner Output Trays (upper 50, lower 100 sheets)
FS-107	2-Tray finisher for max. 1,100 sheets, A5 - A3, 50 sheet/3 position stapling
FT-107	Additional finisher tray (max. 2 can be added to FS-107)
Memory Upgrades	64 MB, 128 MB, 256 MB

Printer Options

IP-011

Print Speed	22 ppm
Resolution	600 x 600 dpi
Paper Size	A5–A3
PDL	WinStyler (Hostbase printer)
CPU	Power PC 401 GF
Host Interface	IEEE1284 Centronics
Printer Drivers	Win95/98/NT4.0/2000
Network Protocols	Win95/98/NT4.0/2000: TCP/IP (LPD/LPR, IPP, FTPserver/client/SMTPclient, HTTP, SNMP) Novell Netware3.x/4.x: IPX/SPX, NDS, Pserver, Apple: EtherTalk
Memory	16 MB (max. 80 MB)
Special Functions	Print Quality Setting, Orientation, Paper Tray Selection, Output Paper Size Selection, Zoom, Exit Tray Selection, Sort/Staple (with finisher), Alternate Sort (without finisher), Duplex, Overlay, Booklet, Front/Back Cover, N-up, Watermark, etc.
Network Card	EasyCom Xpress print server (Ethernet 10/100 Base-T)

IP-422

Print Speed	22 ppm
Resolution	600 x 600 dpi
Paper Size	A5–A3
PDL	PCL5e compatible, PS3 (optional)
CPU	133 Mhz
Host Interface	IEEE1284 Centronics
Printer Drivers	Win95/98/Me/NT4.0/2000, XP, Mac OS (PS3 only)
Network Protocols	TCP/IP, LPD/LPR, IPX/SPX, IPP, FTPserver, FTPclient, SNMPclient, HTTP, SNMP, EtherTalk
Standard Memory	64 MB (max. 128 MB)
Special Functions	Print Quantity Setting, Orientation, Paper Tray Selection, Output Paper Size Selection, Zoom, Sort/Staple (with finisher), Duplex, Password Printing, Overlay, Booklet, Front/Back Cover, N-up, Watermark, Smoothing, OHP, Toner Save, PC-Fax/Internet-Fax with optional FK-102 (from autumn 2002), etc.
Network Card (standard)	Ethernet 10base-T/100base-TX
Hard Disk	PCMCIA, 1 or 2 GB
PS-343	Optional PostScript up-grade (PS3)
MU-411	64 MB expansion module
Network Scanner	TWAIN driver; scan to e-mail/ftp/HDD
Cluster Printing	KPPM (optional software)

Fax Option

FK-102

Compatibility	G3
Modem Speed	33.6 Kbps
Scanning Speed	2 seconds (A4)
Transmission Speed	3 seconds (A4R)
Scanning Resolution	max. 16pels/mm x 15.4lines/mm
Transmission Res.	max. 400 x 400 dpi
Half Tones	256 grey scales
Coding	MH, MR, MMR, JBIG
Memory	2 MB standard (16 MB max.)
Original Size	max. A3
Recording Size	max. A3
One-Touch Dials	40
Abbreviated Dials	200
Program/Group Dials	40
Special Functions	Broadcasting Transmission, Quick Memory Transmission (fax while scan), Rotational Transmission/Receiving, Book Copy Transmission, 2-in-1 Transmission/Recording, Duplex Recording, Remote Multi-Printing, PC-Fax with IP-422, etc.

The availability of the special functions listed above depends on the optional accessories installed on KONICA 7022.

All indications regarding paper, original and output capacities refer to the max. capacity based on standard 80g/m² paper.

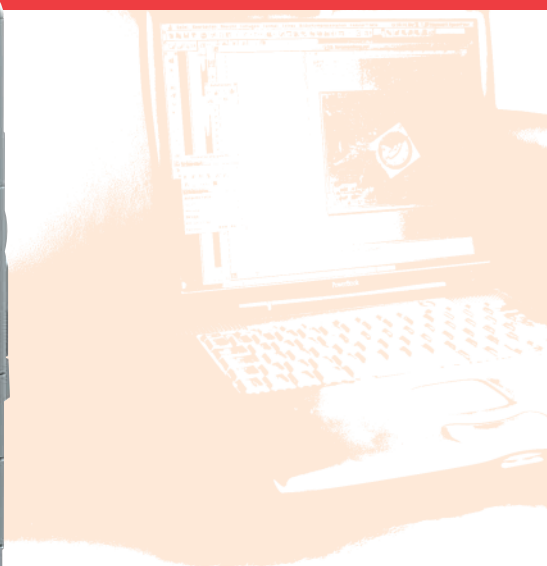
Technical Specifications subject to change without notice! Status: 2/2002. Latest valid technical specifications can be obtained from your KONICA partner.

Your KONICA partner



KONICA 7022

DOCUMENT COMMUNICATION SYSTEM



Free Manuals Download Website

<http://myh66.com>

<http://usermanuals.us>

<http://www.somanuals.com>

<http://www.4manuals.cc>

<http://www.manual-lib.com>

<http://www.404manual.com>

<http://www.luxmanual.com>

<http://aubethermostatmanual.com>

Golf course search by state

<http://golfingnear.com>

Email search by domain

<http://emailbydomain.com>

Auto manuals search

<http://auto.somanuals.com>

TV manuals search

<http://tv.somanuals.com>