



KONICA MINOLTA

bizhub 750

“I’m at the Hub.”

75 cpm/ppm Seamlessly Integrated MFP



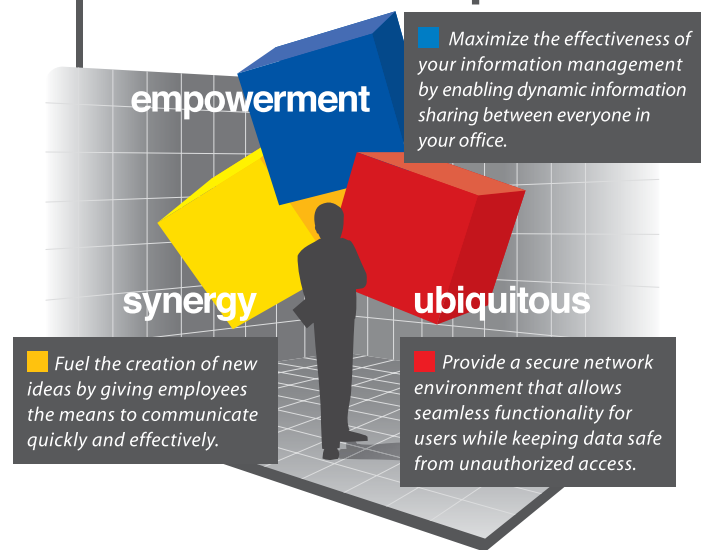
The essentials of imaging



“ To get the best that my people have to offer, I need a system that lets them share their ideas in real-time. The bizhub 750 gives them an open, yet secure, print network environment with remote-access capability, while delivering high-quality 75ppm output for the large-volume printing and finishing my office requires. ”

Put yourself at the hub of business |

The bizhub concept



bizhub 750 features

- 75ppm/cpm output speed
- 100% duplex productivity
- 7,600-sheet capacity
- 2,400 x 600dpi print resolution with smoothing
- Versatile scan-to functions
- Box functions
- Secure data protection
- Staple, hole-punch and folding options
- Fax capability (in development)



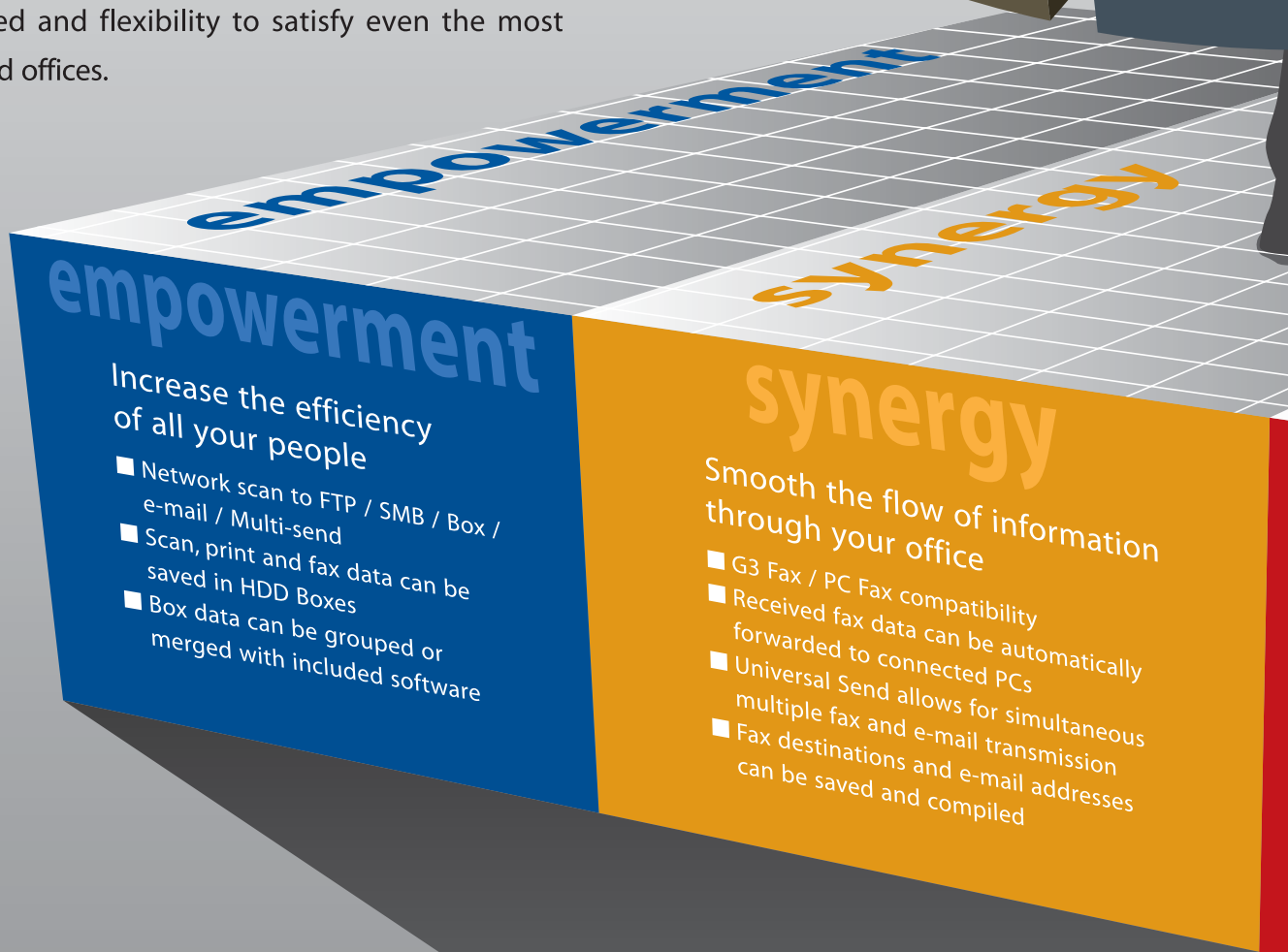
bizhub 750

The bizhub Advantage

Next-generation offices require a level of productivity and adaptation that traditional systems simply can't deliver. They need seamless consolidation of functions and flexible customization for industry-specific jobs. Konica Minolta has answered this need with the incorporation of the newly developed bizhub OP. Encompassing architecture, print system and an open protocol, the bizhub OP makes good on the bizhub promise of empowerment, synergy and ubiquity throughout your office. By centralizing document production with communication, bizhub's streamlined, cross-functional design gives your employees the tools they need in a secure work environment. Incorporating cutting-edge bizhub OP technology, bizhub is here to power business with the speed and flexibility to satisfy even the most advanced offices.

bizhub Architecture

Seamless control of all functions to boost productivity, security and account management.



New Open Platform

bizhub *OP*

bizhub Open API

API's open protocol (Spring 2006) will allow flexible customization and integration with third-party software.

Emperon Print System

Advanced seamless integration of document output management with a consistent, easy-to-use interface. A standardized printer driver ensures intuitive operability.

ubiquitous

ubiquitous

Keep your information safe from security risks

- Password protection prevents unauthorized access
- Finished job data is completely erased from HDD
- All network communications protected with SSL encryption
- Security Log allows tracking of errors and unauthorized access attempts
- HDD Lock function protects data even when HDD is removed



05





Empowerment

Information flow is the key to increasing office productivity, and the bizhub 750 is the central link that lets it all happen. By enabling your staff to easily store and share information where everyone has immediate access, the bizhub 750 empowers them to reach an even higher level of performance.

Scanning Functions

Network Scan

The scan unit scans 75 sheets per minute and holds up to 100 sheets in the ADF tray. The new bizhub OP system enables you to scan documents even while printing, data transfer or other operations are in progress.

Scan to FTP

The scan to FTP function enables you to share heavy-volume documents with a wide audience. Documents are saved in user-specified directories where you can download them to your PC.

Scan to SMB

Scan to SMB lets you send scan data to connected PCs where it can be saved in sharing folders, without the need for a central server.

Scan to Box

With the optional built-in HDD, you can save scan data to an HDD Box, and then set access privileges to allow sharing within a specific division, work group, etc.

Scan to E-mail

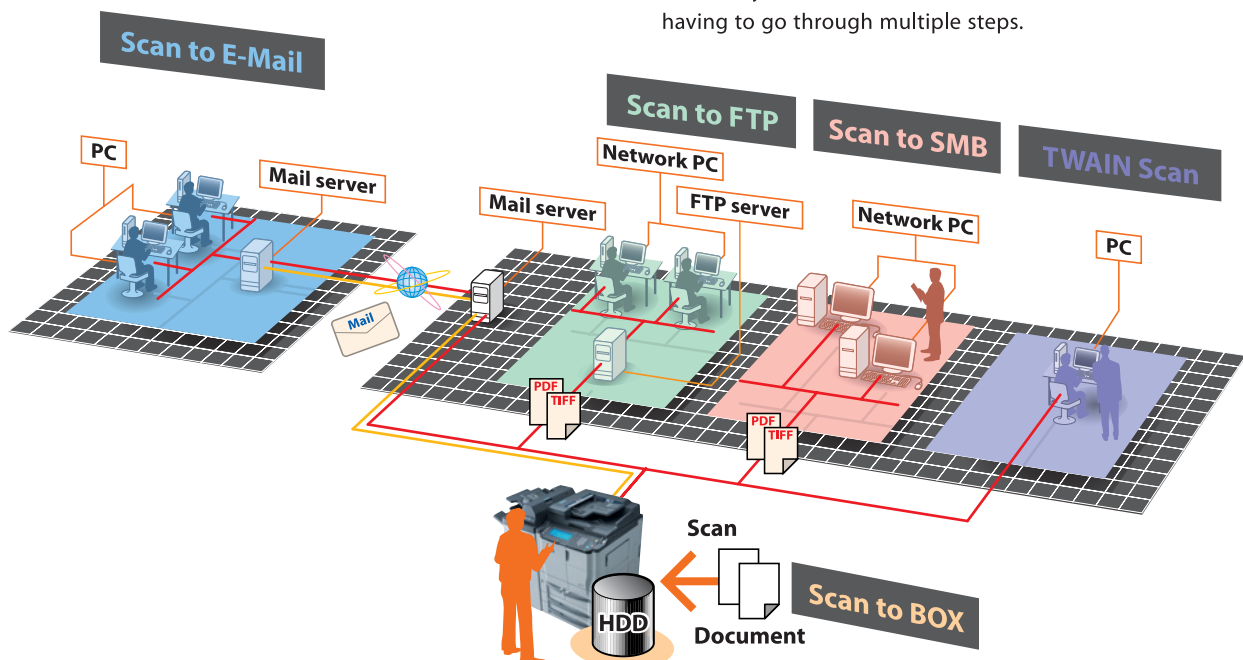
Connected to your office e-mail infrastructure, the bizhub 750 can send scan data, in PDF or TIFF format, as an attachment directly to any e-mail address.

LDAP Compatibility

Using LDAP, (Lightweight Directory Access Protocol), the e-mail address manager can access directories to compile useful lists of recipients. This list can be used with the Scan to e-mail function to send data to large groups of recipients.

Scan to Multi-send

From a single scanning, data can be saved or forwarded in a variety of ways (SMB, Box, FTP, e-mail) simultaneously. This enables you to share and distribute documents without having to go through multiple steps.

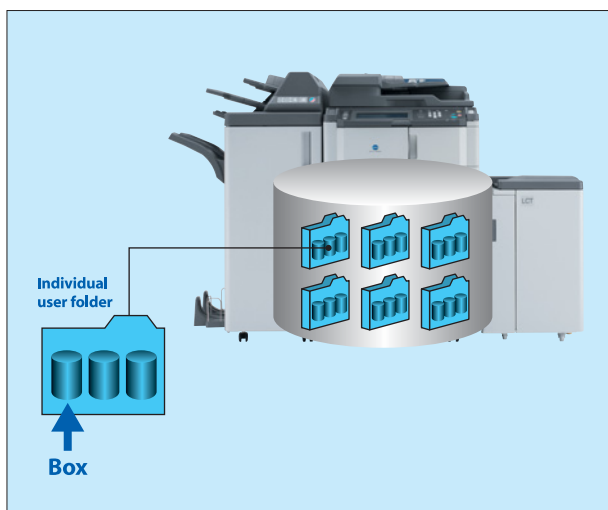




Document Storage and Handling

Box Functions

Scan and print data can be saved to the optional 40GB internal hard drive. Up to 1,000 separate Boxes can be created and separated by job, work group or other criteria for more effective data management.

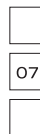
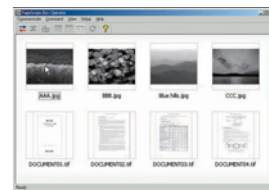


Job Merge and Image Merge

Scan and print data saved to Boxes can be merged together into a single job and output all at once. You can keep each job attribute separate, or merge all attributes to a single setting.

PageScope Box Operator

Installed on a connected PC, PageScope Box Operator allows you to view thumbnail previews of multiple documents stored in Boxes, allowing them to preview data before printing them. You can also rename or delete files.



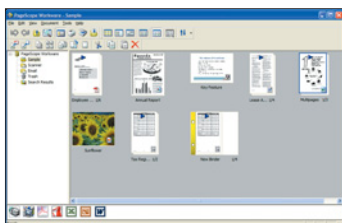
Data Forwarding & E-mail Attachments

Scan and print data saved to Boxes may be transferred to SMB or to FTP servers, and may also be sent to others as e-mail attachments. Data can also be sent out via fax.

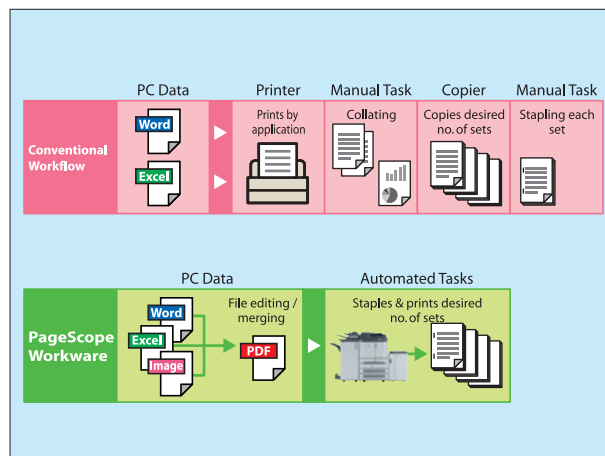
Document Editing and Processing

PageScope Workware

This software enables users to convert documents to PDF format, allowing them to be copied or transferred to connected PCs, merged together or deleted. Image settings, such as background density, brightness and contrast can also be adjusted for printing.



*Note: Data scanned using the bizhub 750 will be in B&W.
 **Payware. Availability may vary according to market.





Synergy

The bizhub 750 does far more than just print and copy; with versatile e-mail, fax and data transfer functions, it boosts the power of your office by becoming the communication center linking your staff together with the rest of the world.

Fast, Convenient, Flexible

New Control System

The bizhub 750 brings high-speed copy, print, scan and fax functions together into a single unit, letting you take care of a variety of different jobs. And with the addition of the new

bizhub OP control software system, the delays due to the communication requirements of other jobs are eliminated.

08

Copying

Printing

Faxing

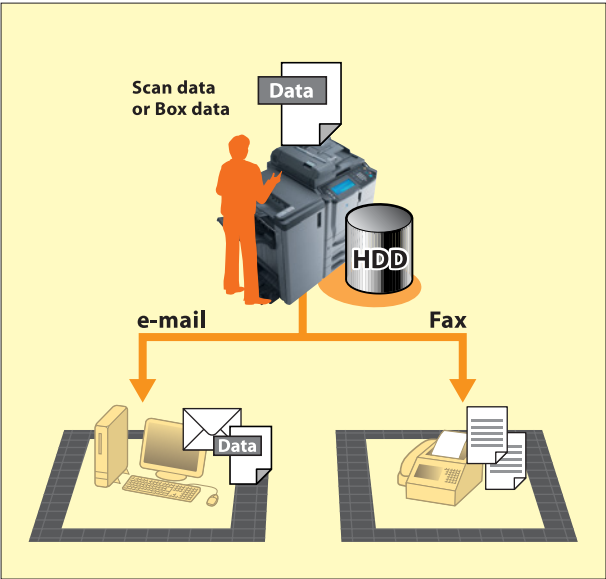
Scanning



Easy Distribution

Universal Send

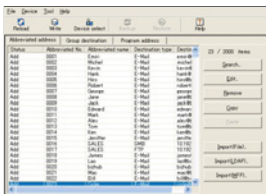
You can send scan data or Box data to a variety of destination types via fax and e-mail with just a single action.



Software Solutions

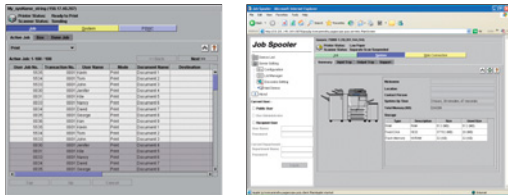
PageScope Data Administrator

This included network application records e-mail recipient addresses and fax destinations all in one place. This information can be saved to a connected PC for easy management.



Job Spooler

This application provides centralized management over your intranet of active jobs on your MFP. Administrators can set job priority levels and user privileges, rearrange or delete queued scan and print jobs, and keep records of all job activity. Job Spooler plays an essential role in providing a higher level of flexibility and control for multitasking.



Fax Functions

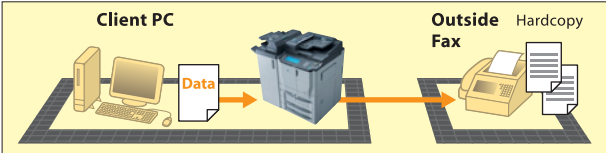
G3 Fax

The Super G3 fax function enables high-speed reception and transmission of faxed documents over standard telephone lines, reducing office telephone costs. With an additional Fax Kit, fax data can be received or sent in two directions simultaneously.



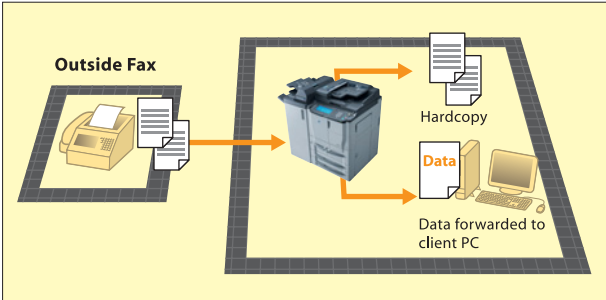
PC Fax

Faxes may be sent directly from a connected PC without needing to first be printed out. This helps ensure higher print quality of faxed documents at their destination.



Receiving and Forward Functions

Incoming faxes can be printed out directly at the bizhub 750, or they can be forwarded to connected PCs. By excluding the jobs of categorization and distribution, communication reliability is increased. Faxes can also be stored in a designated Box in the HDD, where you can access them at anytime.

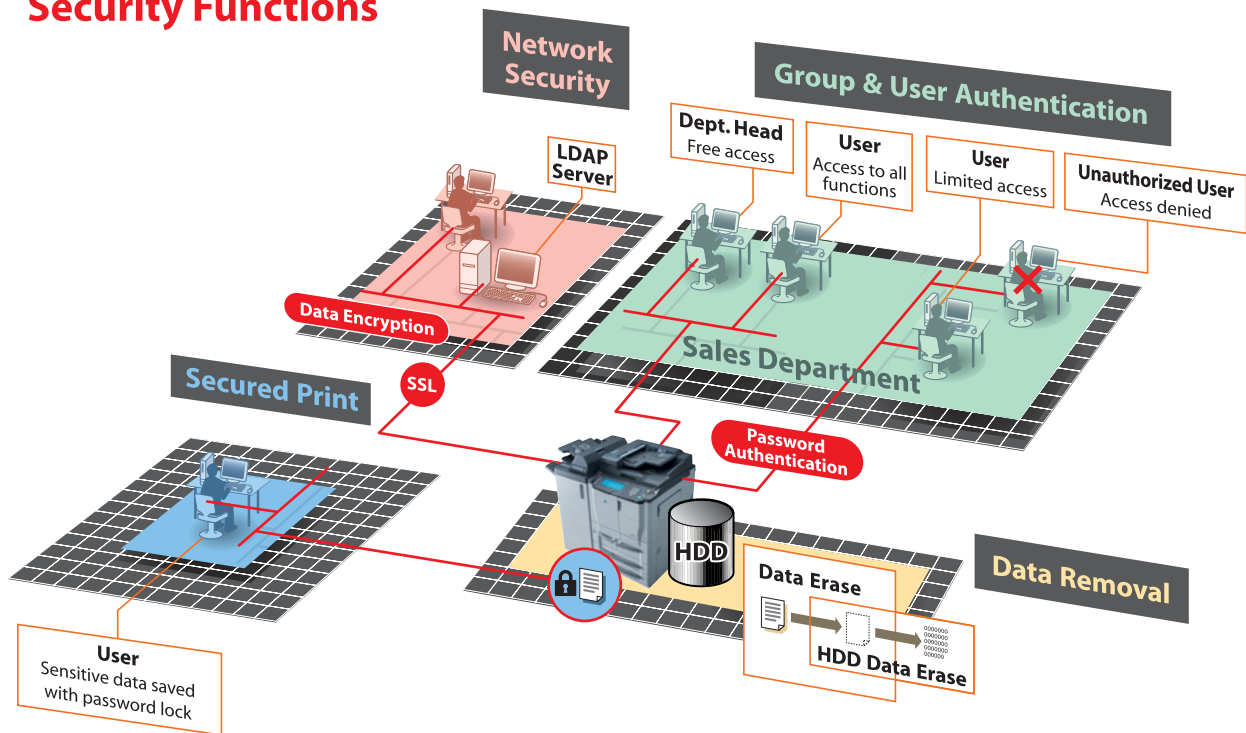




Ubiquitous

You owe it to your employees and customers alike to ensure that sensitive data is kept secure from unauthorized access. The bizhub 750 provides a ubiquitous secure working environment that doesn't hamper productivity by straitjacketing users.

Security Functions

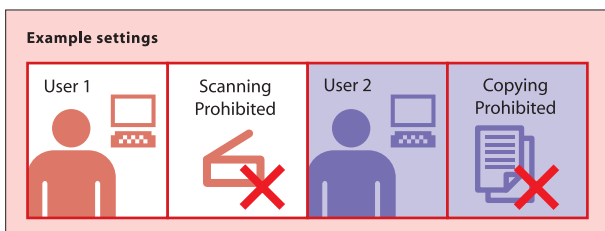


10

Access Management

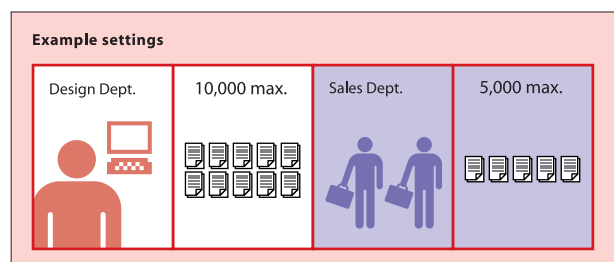
User Authentication Functions

For increased security, customized access privileges can be set for each user, granting or limiting access to particular functions (copy / scan / print), or setting page input and output limits for each user. Access can also be limited to only particular servers, which can be selected to suit office needs.



Group Authentication

Group input and output limits can be set for each division. User and Group authentication can be used together or separately, enabling administrators to set group privileges, then add further individual privileges and restrictions.





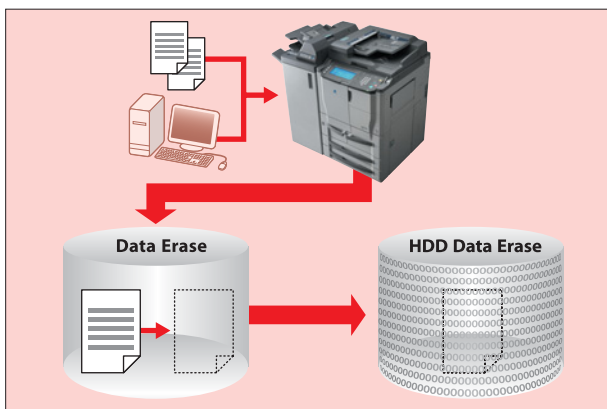
➤ Encryption and Removal of Old Data

Data Erase

After each job is finished, the job data is erased from the HDD cache.

HDD Data Erase

For added security, the entire HDD can be completely overwritten with "0"s, ensuring that nothing can be accessed or read.



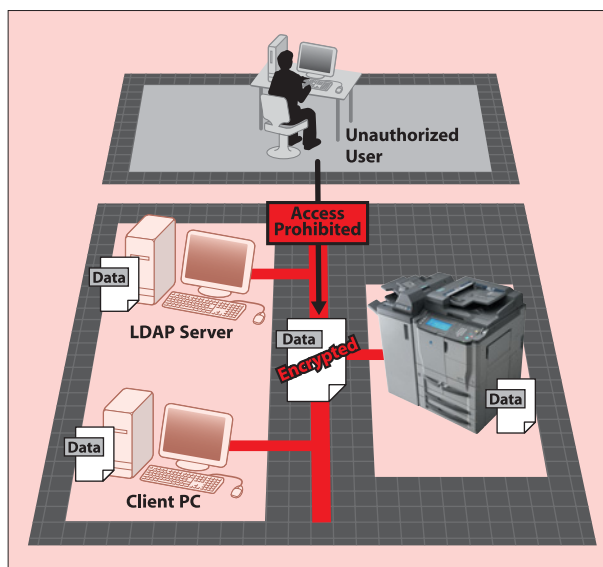
Job Data Encryption

With the optional SC-501 Security Kit, temporary job data saved to the HDD is automatically encrypted for safety.

➤ Network Security

Encrypted Communication

All network communication is protected with SSL encryption. Any kind of communication made via LDAP, PageScope Data Administrator, PageScope Web Connection, or access from another server, is protected in this way.



➤ Better Protection for Sensitive Data

Secured Print

A password-based security lock helps prevent unauthorized printing of confidential documents, such as project bids or employee transfer notices. Once a document is locked, it cannot be output unless the correct password is entered at the control panel.

➤ Trusted Security

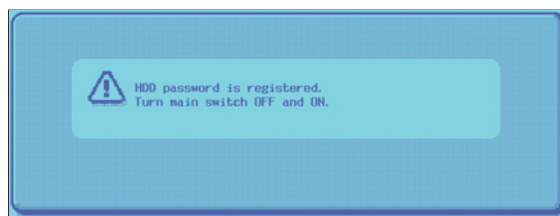
ISO15408 (EAL Level 3) Certification

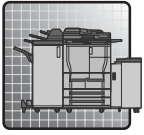
All software included with the bizhub 750 has completed certification for compliance with the security requirements of ISO15408 (EAL Level 3).

➤ Full Data Protection

HDD Password Lock

The HDD can be assigned a password, preventing unauthorized users from accessing HDD data. This protects the data from being viewed or altered, even if the HDD is removed from the main unit.





Productivity

High Speed



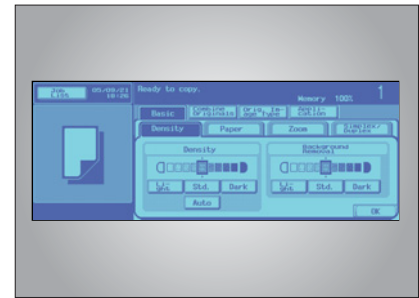
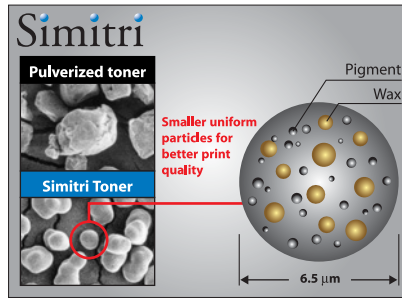
75ppm High-speed Output

The bizhub 750 is capable of quick, consistent print and copy output of 75ppm/cpm (A4), even for large-volume jobs.

100% Duplex Productivity

The bizhub 750 can produce both one-sided and two-sided documents at the same 75ppm/cpm speed, enabling you to create high-quality documents with less paper waste in the same amount of time.

High Image Quality



High Resolution Output

Copy data is output at 1200 x 600dpi with smoothing, providing faithful reproduction of originals. For print data, digital smoothing raises resolution to 2400 x 600dpi, allowing clear, sharp reproduction of fine details and small text.

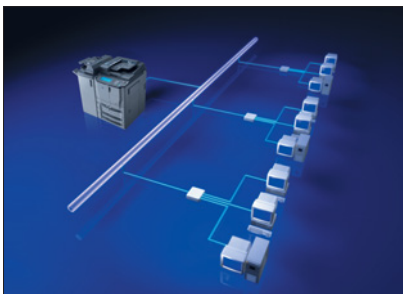
High Quality Polymerized Toner

The bizhub 750 uses Konica Minolta's new Simitri polymerized toner, featuring smaller, more uniform particles than standard toners. Polymerized toner produces better quality graphic and text output, and the lower fixing temperature reduces energy costs and paper curling.

Automatic Exposure Selection

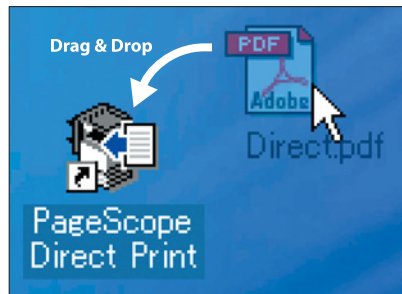
When scanning text printed on colored paper, automatic or manual settings allow you to adjust contrast, exposure and toner density to reduce background colors and ensure that text stands out clearly.

Print



Network Print Compatibility

The Emperon Print System, part of bizhub OP, enables clear, accurate, high-speed image processing. Supporting PCL5E/PCL6 and PostScript3 page description languages, it allows Mac OS and Windows machines to connect to the same print network.



PDF / TIFF Direct Print Capability

With the included PageScope Direct Print software, you can print PDF and TIFF documents with a simple drag & drop operation. Neither the files nor the native applications need to be opened, reducing print times considerably.

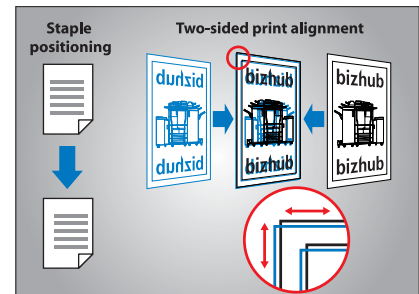
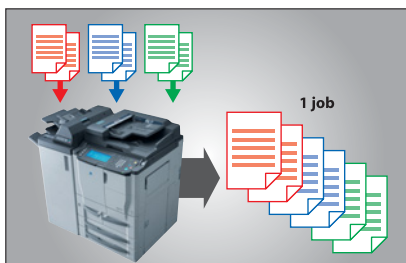


Image Shift

The image shift function sets image position for easier reading of stapled documents. Also, during two-sided printing, the bizhub 750 automatically shifts the front and back sides to minimize misalignment. You may also set image shift manually in 0.1mm increments.

➤ Copy



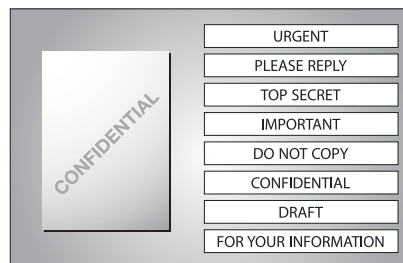
Separate Scan

Separate batches of original documents may be scanned individually, then merged together and output as a single job. This eliminates the need for manual collating and sorting.



Mixed Paper Input Integration

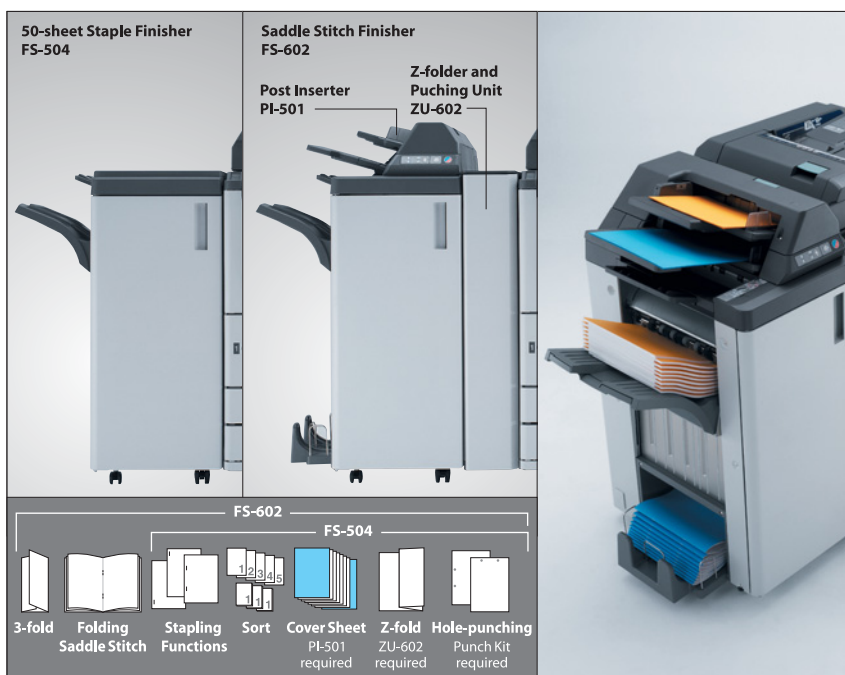
The ADF unit can accept mixed-size originals and automatically select the proper paper size for each output document.



Watermarks

Copied documents can be produced with watermarks printed over them to indicate confidentiality or other information.

➤ Finishing and Paper Capacity



100% Finisher Productivity

Even when using the staple or hole-punch functions, the bizhub 750 still operates at an output speed of 75ppm/cpm, for effective high-speed inline document production.

New Finishing Functions

The FS-504 Staple Finisher staples up to 50 sheets at a time, and the FS-602 Saddle Stitch Finisher is capable of performing center stapling and 2-folding for booklet production. Together with the Punch Kit and Post Inserter units, they give you a wide range of finishing options at your disposal.

Versatile Post Insertion Functions

The PI-501 Post Inserter can insert cover sheets or chapter breaks* into documents as they are output. The PK-503 / PK-505 Punch Kit enable you to file documents quickly and efficiently, combined with the ZU-602's Z-folding capabilities. *In development.

High-volume Paper Capacity

The Main Unit paper input trays can hold a total of 3,500 sheets, plus an additional 100 sheets in the multi-bypass tray. The addition of the 4,000-sheet (A4) LU-401 or 4,000-sheet (A3) LU-402 Large Capacity Units brings the maximum paper capacity up to a total of 7,600 sheets.

Versatile Paper Size Compatibility

The bizhub 750 can handle paper sizes ranging from postcard to A3, with a maximum size of 314 x 458mm. The multi-bypass tray can also handle paper weights up to 200g/m².





Universal Design

☑ User Friendly



High-visibility Control Panel

The entire control panel is designed for maximum visibility, with high-contrast buttons and markings and a large, high-resolution 8.9-inch LCD panel.

The control panel can be adjusted to 7-degree and 15-degree settings for easy access.

Easy-use Document Feed Unit

The paper scale bar on the ADF is set at an angle and printed with high-contrast markings for easy visibility. Its design allows easy lifting with either hand, as well as access by disabled users.



Easy Operating Paper Trays

All paper trays feature universal design grips and smooth sliding trays that can be opened and closed one-handed, with either an overhand or underhand grip.



High-visibility & Easy Access

The finisher output trays are made with high-contrast materials for easy visibility, and are designed to be accessible from either a high or low angle.



High-durability Construction

Pipe pillar supports, box-type panels and vibration-resistant screws provide a rigid structure and maximum durability for a long productive life. In addition, all parts use materials chosen to minimize environmental impact.



Ecology Design

☑ Nature Friendly



Eco-friendly Toner

Polymerized toner consumes less energy and produces up to 40% less CO₂, NO_x, and SO_x emissions than pulverized toner. The bizhub 750 also has a toner recycling system that allows replacement without interrupting output while reducing total toner consumption and waste.

Energy Conservation

The toner's low fixing temperature allows the bizhub 750 to use less energy when operating. In addition, the warm-up time has been reduced by 15% over previous models.

WEEE Compliance

Konica Minolta is committed to achieving full compliance with WEEE (Waste Electrical and Electronic Equipment) regulations for the bizhub 750. As such, Konica Minolta will guarantee proper recycling and disposal of all components and parts.



Energy Star

The bizhub 750 conforms to the guidelines of the International Energy Star Program for reduced energy consumption and improved efficiency.

RoHS Compliance

Ahead of the EU's deadline for compliance with RoHS (Restriction of Hazardous Substances) regulations, Konica Minolta will eliminate the use of harmful materials, including lead, mercury, cadmium,



Blue Angel

The bizhub 750 meets the Blue Angel (BAM2004) guidelines for efficiency and environmental responsibility.

hexavalent chromium, PBB and PBDE from the production of all electrical and electronic components.



bizhub 750

Specifications

Model name		bizhub 750
Type		Console with document feeder (B/W Copier / Printer / Scanner)
Resolution	Scanning	600 x 600dpi
	Printing	1,200 x 600dpi with smoothing
Memory		512MB DIMM (standard)
Paper sizes		A3-A5 (tray), A3-B6 (multi-bypass) (both support irregular paper sizes up to 314 x 458mm)
Warm-up Time		Less than 5 minutes
First-copy Time		Less than 2.9 seconds (A4)
Copy Speed		75cpm
Magnification	Fixed	Fixed Ratio: 1:1 ± 0.5; Reduction: 0.500/0.707/0.816/0.866/0.930 Enlargement: 1.154/1.224/1.414/2.000
	Zoom	Zoom: 25% to 400% in 0.1% increments
Paper capacity		Main body x 4 trays (upper left: 1,500 sheets, upper right: 1,000 sheets, 500-sheet universal tray x2); multi-bypass: 100 sheets
Paper weights		60-200g/m ² (trays), 50-200g/m ² (multi-bypass)
Multiple copy		Up to 9,999
Power requirement		230V/10A
Power consumption		2.3kW
Dimensions (W x D x H)		650 x 791 x 1,140mm / 25-1/2 x 31 x 45in (with DF)
Weight		Approx. 222kg / 489-1/2lb (main unit + DF)

Print Controller (optional)

Model		IC-202
Type		Embedded Type
CPU		Intel Celeron 650MHz
Memory		512MB (shared with main unit)
Speed		75ppm
Resolution		2,400 x 600dpi with smoothing
Printer Languages		PCL5E / PCL 6 / PostScript3
Network Protocol		TCP/IP, IPX/SPX (NDS compatible), SMB (NetBEUI), LPD, IPP 1.1, SNMP, HTTP, EtherTalk
Operating System		Windows98 / Me, WindowsNT 4.0 / 2000 / XP / Windows Server 2003 Mac OS 9.0 or later, Mac OS X (10.2 / 10.3)
Fonts	PCL	European Font 80 types (Agfa Micro type, Symbolset 36 kinds)
	PS3	European Font Adobe 136 types
Interface		Standard: Ethernet (100BASE-TX / 10BASE-T), Optional: IEEE1284, USB 2.0

Scanner

Type	B/W
Speed	75opm
Max.Original size	A3 (297 x 420mm)
Scanner File Format	TIFF, PDF (ver. 1.3)
Scanner Resolution	200 x 200dpi / 300 x 300dpi / 400 x 400dpi / 600 x 600dpi
Interface	Ethernet (100BASE-TX / 10BASE-T)

System Options

LU-401	Large Capacity Unit for 4,000 sheets (A4 314 x 223mm), 60-200g/m ²
LU-402	Large Capacity Unit for 4,000 sheets (A3 314 x 460mm), 60-200g/m ²
FS-504 Finisher	3 stapling positions Non-sort mode capacity: 3,000 sheets (A4, B5) Max. stapling capacity: 50 sheets (up to 90g/m ²)
FS-505 Finisher	3 stapling positions Non-sort mode capacity: 3,000 sheets (A4, B5) Max. stapling capacity: 100 sheets (up to 90g/m ²)
FS-602 Finisher	2 booklet modes (saddle-stitch, center-fold), 3-fold mode Non-sort mode capacity: 2,500 sheets (A4, B5) Max. stapling capacity: 50 sheets (up to 80g/m ²)
SF-601 Shift Tray	Paper size: Up to A3 (209g/m ² max.) Paper capacity: 1,250 sheets (A4, B5)
PK-503 Punch Kit	2-hole, Paper size: A3-A5 (60-128g/m ²)
PK-505 Punch Kit	2- or 4-hole selectable, Paper size: A3-A5 (60-128g/m ²)
PI-501 Post Inserter	Paper size: Up to A4 from upper tray, up to A3 from lower tray Paper capacity: 200 sheets x 2 (80g/m ²)
ZU-602 Punch Z-fold Unit	2- or 4-hole selectable, Punch paper size: A3-A5 (60-90g/m ²) Z-fold paper size: A3, B4 (60-90g/m ²)
HD-503 Hard Disk	40GB Enables Scan to Box and font download
IC-202 Image Controller	Enables printing
EK-701 Local Connection Kit	For IEEE 1284 Centronics & USB connections
FK-502 Fax Kit	Enables G3 faxing
MK-701 Fax Mount kit	Attaches to the FK-502 Fax Kit
SC-501 Security Kit	Encrypts temporary job data on the HDD

Converting paper weight

Multiply g/m² weight x 0.636 x 0.939
1kg = Approx. 1.66g/m²



System Options

Finisher FS-602
Saddle stitches up to 20 sheets
Center folds for booklet creation

Finisher FS-504/505
3,000-sheet capacity
Staples up to 50/100 sheets

Post Inserter PI-501
Upper tray capacity: 200 sheets (A4-A5)
Lower tray capacity: 200 sheets (A3-A5)

Punch Z-fold Unit ZU-602
Folds A3, B4 sheets,
2- or 4-hole selectable

Punch Kit PK-503
2-hole punching
(connects with FS-504 only)

Punch Kit PK-505
2- or 4-hole selectable

Shift Tray SF-601
Holds up to 1,250 sheets

Hard Disk HD-503
40GB storage capacity

Security Kit SC-501
Encrypts temporary job data

Image Controller IC-202
Enables network printing

Local Connection Kit EK-701

Fax Kit FK-502
Enables faxing capabilities

Fax Mount kit MK-701

Large Capacity Unit LU-401
Holds up to 4,000 sheets of A4 paper

Large Capacity Unit LU-402
Holds up to 4,000 sheets of A3 paper

Product appearance, configuration and / or specifications are subject to change without notice.

- bizhub and PageScope are registered trademarks of KONICA MINOLTA BUSINESS TECHNOLOGIES, INC.
- Windows is a registered trademark of Microsoft Corporation.
- Adobe and PostScript are registered trademarks of Adobe Systems, Inc.
- All other brand and product names are registered trademarks or trademarks of their respective companies.
- As an ENERGY STAR Partner, KONICA MINOLTA BUSINESS TECHNOLOGIES, INC. has determined that this product meets the ENERGY STAR guidelines for energy efficiency.
- ENERGY STAR is a registered trademark in the U.S.
- Availability of equipment may vary according to market.

KONICA MINOLTA BUSINESS TECHNOLOGIES, INC.

1-6-1 Marunouchi Chiyoda-ku, Tokyo, Japan
<http://www.biz.konicaminolta.com>

The control software of the bizhub 750 is certified at Level 3 - the highest level of security for industrial use - of ISO 15408.

The ISO 15408 certification applies only to IT security capabilities. This certification is NOT a product guarantee.



Requirements for safe use.

- Please read and follow the instruction manual to ensure safe operation.
- Only operate using appropriate power supply and voltage.
- Connecting the earth wire to an inappropriate place may cause explosion or electric shock. Please connect accordingly (Taiwan and the Philippines only).



This catalog was printed on recycled paper with soy ink.

9251-3145-41 Printed in Japan

Free Manuals Download Website

<http://myh66.com>

<http://usermanuals.us>

<http://www.somanuals.com>

<http://www.4manuals.cc>

<http://www.manual-lib.com>

<http://www.404manual.com>

<http://www.luxmanual.com>

<http://aubethermostatmanual.com>

Golf course search by state

<http://golfingnear.com>

Email search by domain

<http://emailbydomain.com>

Auto manuals search

<http://auto.somanuals.com>

TV manuals search

<http://tv.somanuals.com>