



KONICA MINOLTA

DRYPRO 771

# DRYPRO 771

*Decentralized Imaging*



The essentials of imaging

# DRYPRO

## MODEL 771

### Decentralized Imaging

As the world of digital image diagnostics continues to evolve, the challenge to provide superior quality diagnostic images, exceptional operating comfort, and superior versatility has been met, with the Konica Minolta DRYPRO 771. The DRYPRO 771 offers decentralized imaging with a minimal footprint and the highest performance standards for outpatient and office imaging.

Konica Minolta technology and expertise created DRYPRO 771, which is a supremely flexible, high-performance, compact dry network imager that realizes the full potential of dry laser imaging innovation. The DRYPRO 771 upholds a higher new standard in the diversifying IT environment.

### New Age Networking

Printlink II print management system can convert image signal output from various non-DICOM modalities to image data that complies with the worldwide DICOM standard. Up to 8 units of DICOM-compatible print or 1 unit storage device can be connected to our Printlink II as output destinations, making backup system set-up easy.

“Auto Character Recognition Function” captures patient data such as name, ID, etc. from non-DICOM images, and transfers it to DICOM servers and viewers in the DICOM (Storage Service Class) form.



User-friendly operator control panel.



Film supply tray supports 11"x 14", 14"x 14" and 14"x 17" film sizes.



Easy access doors.



Optional Printlink II DICOM print/store manager.

## Image Quality You Can Trust

The Konica Minolta family of DRYPRO Laser Imagers offers even the most critical clinician the best of all laser imaging technologies. Our precision laser-optics, superior digital image processing, and industry-proven SD-P Dry Image Film combine to complement your diagnostic expertise and training with the best possible images.

### Superior Image Quality/High Output

The DRYPRO 771 yields 14 Bit density resolution. For the facility, this means more diagnostic information makes it onto the film. Coupled with high speed processing of up to 110 films per hour, your site will be able to deliver superior images and extremely high output.

### Decentralized Imaging

The small footprint of the 771 makes it ideal for a decentralized application. The Printlink II can capture key patient data from imaging modalities that do not support DICOM, and transfers it in the DICOM form.

The design of the 771 allows it to be used in even the brightest clinical environments, and can be used in any modality. Performance and versatility are not sacrificed by its small footprint.



### User-Friendly Design

- The DRYPRO 771 uses a front mounted, one-channel tray and allows processing in a brightly lit room.
- Film size is selectable for added flexibility.
- DRYPRO 771 is used for all modalities as well as CR, enhancing functionality within the department.
- Easy to reach, user-friendly control panel indicates operating status for operational flexibility.
- Timer function starts operation at a user-specified time.
- High-speed processing of up to 110 films/hour and energy-saving design offer optimum performance and versatility.
- First image is processed as quickly as 106 seconds for 14x17 inch film.
- Supply tray shutter prevents accidental film exposure, reducing your cost of operation on supplies.

### Direct Connection to DICOM Network and More Stable Output Image

- The DRYPRO 771 supports Presentation LUT Service Class (standard), making it easy to obtain density scales that are equivalent to those on the modality console display.
- DICOM PRINT function's Requested Image Size provides for an actual-size image, regardless of modalities, providing the best sized image for diagnostic review.
- Supports DICOM verification.
- Auto density control function maintains the output density by automatically measuring the density patch of a fixed exposure on each film.

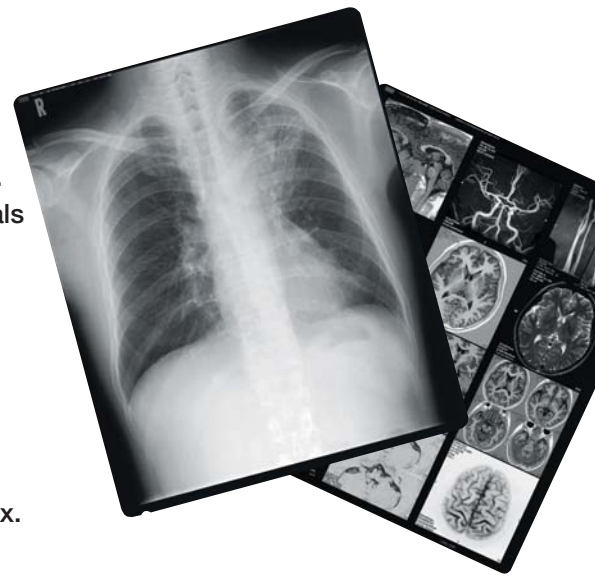


**KONICA MINOLTA**



## Dry Laser Film

Konica Minolta's Silver Dry Process films are designed specially for use with the DRYPRO 771. Halation prevention technology uses new materials for sharper, clearer images with high maximum density and optimized contrast characteristics. A new complex micro emulsion consisting of photosensitive silver halide and photosensitive organic silver achieves ideal dry processing. Konica Minolta's dry laser films are available in tinted (SD-P) and clear base (SD-PC). The film is daylight-packaged and comes 125 sheets per box.



### DRYPRO Model 771 Specifications\*

<b>Laser Source</b>	Semiconductor laser
<b>Film Size</b>	14" x 17", 14" x 14", and 11" x 14" (Selectable)
<b>Film Type</b>	Konica Minolta Medical Imaging Film SD-P/SD-PC
<b>Image Format</b>	1, 2, 4, 6, 8, 9, 12, 15, 16, 20, 24, 25, 30, 35, 36, 42, 48, 54, 56, 60, 63, 64
<b>Image Memory</b>	Hard disk (standard 80GB) Print memory (standard 128MB)
<b>Inputs</b>	Maximum 4 DICOM Channels
<b>Pixel Size</b>	78.6µm
<b>Image Data Input</b>	8 bits / 12 bits
<b>Output Gradation</b>	16384 levels (14 bits)
<b>Processing Capability</b>	Approx. 110 sheets (14" x 17") / hour
<b>Input Interface</b>	Ethernet 10 base-T / 100 base-TX
<b>DICOM Services</b>	DICOM Print Management, GSDF
<b>Supply</b>	1 channel
<b>Border Processing</b>	Black / White
<b>Trimmed Frame</b>	Available
<b>Calibration</b>	Internal; Automatic
<b>Density Correction</b>	Built-in, Automatic
<b>Positive / Negative</b>	Available
<b>Operating Environment</b>	Temperature: 59 – 86°F Humidity: 30% – 70 %
<b>Power Source</b>	120V AC / 1020 VA
<b>Heat Generation</b>	Approx. 950KJ/hour
<b>Dimensions</b>	24.8"(W) x 23.6"(D) x 44.2"(H)
<b>Weight</b>	385 lbs.
<b>Accessories</b>	Power cable, Operation Manual, Cutter (for film loading)
<b>Comparison of density resolution</b>	16384 levels, 14 bits; 4096 levels, 12 bits
<b>Pixel Interpolation</b>	Replication/Bi-linear/Cubic Spline

\*Specifications above are subject to change without notice.

### Konicare Technical & Professional Service

As a world-class organization, Konica Minolta Medical Imaging provides service and support that is second to none. Our teams of professional service experts are available to you 24 hours a day, seven days a week, to ensure that your business always runs at peak performance. To help meet the specific needs of customers coast to coast, Konica Minolta Medical Imaging has established the Konicare Technical and Professional Services organization.

Konicare consists of people and programs dedicated to optimizing efficiency and productivity within your department. Our professionals are divided into such groups as Application Specialists, Project Managers, Technical Support Specialists and Field Service Representatives. Our programs include Remote Technical Support, Clinical Applications, Project Management, System Integration, System Administration Training and Network/Integration Services.

The Konicare program is designed for maximum flexibility to meet every technological and management need at busy radiology departments. We can customize a program for any facility and any budget, making optimum use of all available resources for the best possible patient care.



KONICA MINOLTA

KONICA MINOLTA MEDICAL IMAGING USA, INC.  
411 NEWARK POMPTON TURNPIKE  
WAYNE, NJ 07470  
TEL: (973) 633-1500 FAX: (973) 523-7408  
WEBSITE: [medical.konicaminolta.us](http://medical.konicaminolta.us)

## Free Manuals Download Website

<http://myh66.com>

<http://usermanuals.us>

<http://www.somanuals.com>

<http://www.4manuals.cc>

<http://www.manual-lib.com>

<http://www.404manual.com>

<http://www.luxmanual.com>

<http://aubethermostatmanual.com>

Golf course search by state

<http://golfingnear.com>

Email search by domain

<http://emailbydomain.com>

Auto manuals search

<http://auto.somanuals.com>

TV manuals search

<http://tv.somanuals.com>