



KONICA MINOLTA

PageScope Network Setup 3.0

User Manual

Welcome

Thank you for using KONICA MINOLTA PageScope Network Setup. PageScope Network Setup is utility software which allows simple network setup of devices such as printers. It allows setup of devices on networks connected using TCP/IP or IPX protocol to be handled together.

PageScope Network Setup supports the following functions.

- Displays a list of devices on the network.
- Allows a user to verify and change the network and print settings for devices.
- Allows setup for peer-to-peer printing.
- Accesses the Web settings page in the device.
- Allows monitoring of the device status.
- Displays alert and output tray information for a device.

Trademark Acknowledgements

KONICA MINOLTA and KONICA MINOLTA logo are trademarks or registered trademarks of KONICA MINOLTA HOLDINGS, INC. PageScope is a trademark or a registered trademark of KONICA MINOLTA BUSINESS TECHNOLOGIES, INC.

Ethernet is a registered trademark of Xerox Corporation.

Microsoft, Windows, and Windows NT are registered trademarks or trademarks of Microsoft Corporation in the United States and/or other countries.

Novell and NetWare are registered trademarks of Novell, Inc., in the United States and other countries.

All other product names are trademarks or registered trademarks of their respective holders.

Copyright© 2002 KONICA MINOLTA BUSINESS TECHNOLOGIES, INC. All rights reserved.

The information contained in this manual is subject to change without notice.

CONTENTS

1	<i>System Requirements</i>	1
2	<i>Installing and Starting PageScope Network Setup.....</i>	2
2.1	Installing PageScope Network Setup.....	2
2.2	Starting PageScope Network Setup.....	2
2.3	Uninstalling PageScope Network Setup	3
2.3.1	For Windows 95/98/Me/NT/2000.....	3
2.3.2	For Windows XP.....	3
3	<i>Browsing Network Devices</i>	4
3.1	Screen Configuration	4
3.2	Verifying Device Setup Status	8
3.3	Displaying the Device Alert Property	9
3.4	Displaying Device Output Tray Information	10
3.5	Configuring a Device with PageScope Network Setup.....	11

4	<i>Changing the Device Setup</i>	12
4.1	Configuring Device Information	12
4.2	Configuring TCP/IP	14
4.3	NetWare Print Setup	16
4.3.1	Setting up the Print Server	17
4.3.2	Selecting the Mode	18
4.3.3	Selecting the Print Queue	20
4.3.4	Selecting Users for Event Notification	22
4.3.5	Verifying the Setup	23
5	<i>Peer-to-peer Print Setup</i>	25
5.1	TCP/IP Peer-to-peer Printing.....	25
5.1.1	Configuring for TCP/IP Peer-to-peer Printing	25
5.1.2	Configuring for TCP/IP Peer-to-peer Printing by Specifying the Device Manually.....	27
5.2	IPX Peer-to-peer Printing.....	28
5.2.1	Configuring IPX Peer-to-peer P rinting.....	28
5.2.2	Configuring for IPX Peer-to-peer Printing by Specifying the Device Manually.....	30
5.3	After Creating the Peer-to-peer Port	31

6	<i>Option Setup</i>	33
6.1	Selecting a Protocol	33
6.2	Specifying the Search Range	34
6.3	Specifying BOOTP	36
6.4	Specifying Polling Settings.....	38
6.5	Changing the Password	39
	 <i>Appendix Glossary</i>	 40

1 System Requirements

The following are the minimum system requirements for installing PageScope Network Setup.

OS*(1)	- Windows 95/98/Me - Windows NT 4.0 - Windows 2000 - Windows XP
Browser	- Internet Explorer 4.0 or later
NetWare Client*(2)	- Novell NetWare Client 32 (latest version)
Protocol*(3)	- TCP/IP - IPX/SPX

- *(1) We recommend you to use the latest version service packs when using Windows NT 4.0 or Windows 2000.
- *(2) Although this utility can work without NetWare, it is required when you set up NetWare.
- *(3) The tools provided by this utility differ according to the type of protocol supported on the user network environment.

2 Installing and Starting PageScope Network Setup

2.1 Installing PageScope Network Setup

Use the following procedure to install PageScope Network Setup.

1. Place the CD-ROM into your computer's CD-ROM drive.
2. Start up the installation program. (setup.exe)
3. Follow the instructions that appear on your computer screen to proceed with the installation.

The following is the default installation location used by the installer.

```
C:\Program Files\KONICA MINOLTA\PageScope  
Network Setup
```

The installer provides you with an opportunity to specify a different location, if you want.

2.2 Starting PageScope Network Setup

1. Click **Start** → **Programs** → **KONICA MINOLTA** → **PageScope Network Setup** → **PageScope Network Setup**.
In the case of Windows XP, click **start** → **All Programs** → **KONICA MINOLTA** → **PageScope Network Setup** → **PageScope Network Setup**.
2. When the **Login Password** dialog box appears, type in the password.

Note

- The default password is "admin".
- For details on changing the password, refer to "6.5 Changing the Password".
- When you start up PageScope Network Setup, it searches for devices on the network. The search procedure can take anywhere from a few seconds to 20 or 30 seconds or more. Wait for the search procedure to complete before trying to do anything else.

2.3 Uninstalling PageScope Network Setup

2.3.1 For Windows 95/98/Me/NT/2000

1. Click **Start** → **Settings** → **Control Panel**.
2. Double-click the **Add/Remove Programs** icon.
3. On the **Add/Remove Programs Properties** dialog box, select **KONICA MINOLTA PageScope Network Setup** in the list of programs, and then click the **Add/Remove** button.
In the case of Windows 2000, click **Change or Remove Programs**, click **KONICA MINOLTA PageScope Network Setup**, and then click the **Change/Remove** button.
4. Follow the instructions that appear on the screen to complete the uninstall procedure.

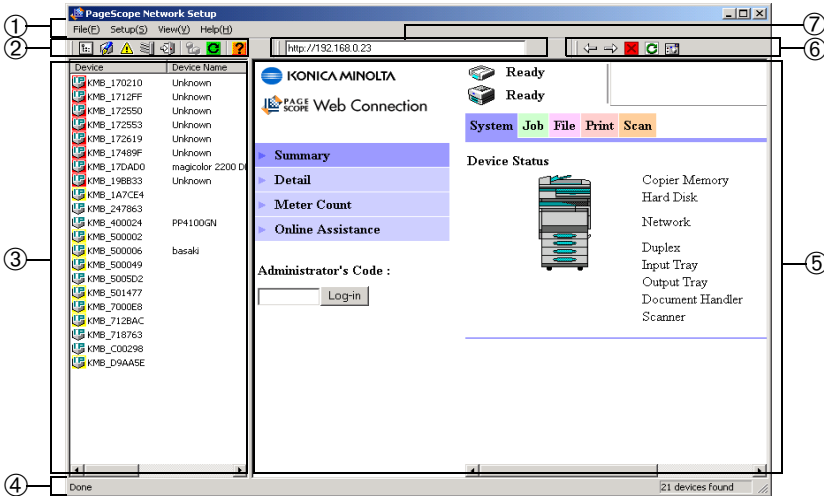
2.3.2 For Windows XP

1. Click **Start** → **Control Panel**.
2. Double-click the **Add or Remove Programs** icon.
3. On the **Add or Remove Programs** dialog box, select **KONICA MINOLTA PageScope Network Setup** in the list of programs, and then click the **Change/Remove** button.
4. Follow the instructions that appear on the screen to complete the uninstall procedure.

3 Browsing Network Devices

This section explains the contents of PageScope Network Setup screens.

3.1 Screen Configuration




① Menu bar


Clicking on a menu pulls it down so you can access its commands.


② Toolbar (for the device list)






The toolbar provides one-click access to often-used PageScope Network Setup operations.

If you cannot see the toolbar on the display, select **Toolbars** on the **View** menu.

 ... Displays the properties of the device selected in the device list.

 ... Displays a dialog box for changing the settings of the device selected in the device list.

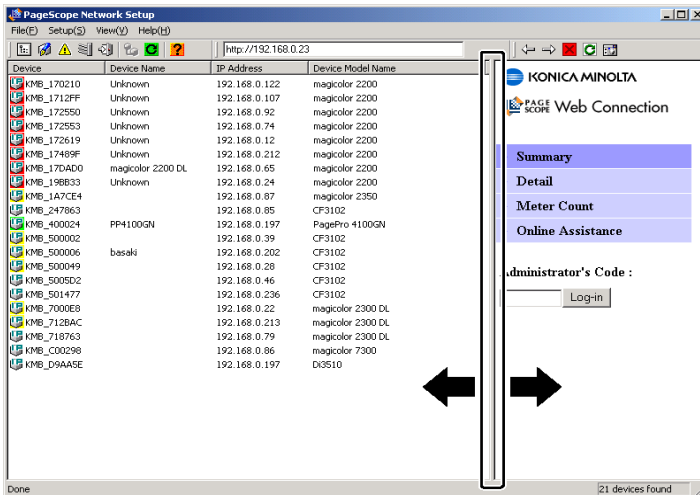
 ... Displays alert information for the device selected in the device list.

-  ...Displays output tray information for the device selected in the device list.
-  ... Quits PageScope Network Setup.
-  ...Displays a dialog box for configuring peer-to-peer printing.
-  ... Refreshes the device list.
-  ... Displays on-line help.

③ Device list

This list show devices detected on the network.


To change the width of the device list, drag the border between the device list and browser display area.




3 Browsing Network Devices

Device

This is the device icon and device name. The icon that appears differs according to the protocol used for connecting the device.

 ...Device connected using TCP/IP

 ...Device connected using IPX

Devices connected using both TCP/IP and IPX will be displayed with the TCP/IP icon.

The background color of the icon indicates the device status.

No color: Ready

Green: Printing

Yellow: Alert

Red: Error

The device status is updated every 30 seconds (default setting). The interval can be changed with the polling settings.

See 6.4 *Specifying Polling Settings* for details on changing the polling interval.

Device Name

This is the device name for management purposes.

IP Address

This is the IP address allocated to the device.

Device Model Name

This is the device model name.

- Select **Device Search** from the **File** menu to perform a new device search and display the latest network information on the device list.
- See 6 *Option Setup* for details about configuring the device search operation.

④ Status bar

When you move the mouse pointer to a toolbar button, the status bar displays an explanation of the button's function.

If you cannot see the status bar on the display, select **Statusbars** on the **View** menu.



⑤ **Browser display area**


This area displays the built-in Web setup page for the device selected in the device list.


⑥ **Toolbar (for the browser display area)**


The toolbar contains buttons for performing various operations in the browser display area.

 ...Returns to the previously displayed page.

 ...Advances to the next page after the pages have been scrolled through using the  button.

 ...Closes the Web setup page display.

 ...Refreshes the contents of the Web setup page.

 ...Displays the current Web setup page in the standard Web browser installed on your system.


⑦ **URL field**

This field displays the URL of the device selected in the device list.

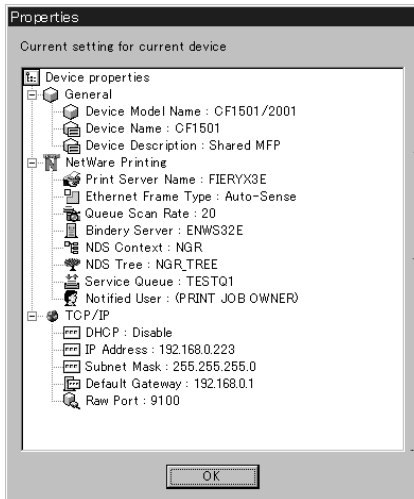
3.2 Verifying Device Setup Status



Verify the current device setup status as follows.

1. On the device list, click on the icon for the device whose setup status you want to verify.
2. Select **Device Property** on the **File** menu.

You could also click the toolbar  button.

This displays the **Properties** dialog which shows the current setup status for the device.



- Click a  button on the tree to expand an item.
- Click a  button on the tree to collapse an item.

The **Properties** dialog contains the following information.

General

Displays the settings for managing the device. See *4.1 Configuring Device Information* for details about changing this setup.

NetWare Printing

Displays the setup for device NetWare printing. See *4.3 NetWare Print Setup* for details about changing this setup.

TCP/IP

Displays the setup for device TCP/IP. See 4.2 *Configuring TCP/IP* for details about changing this setup.

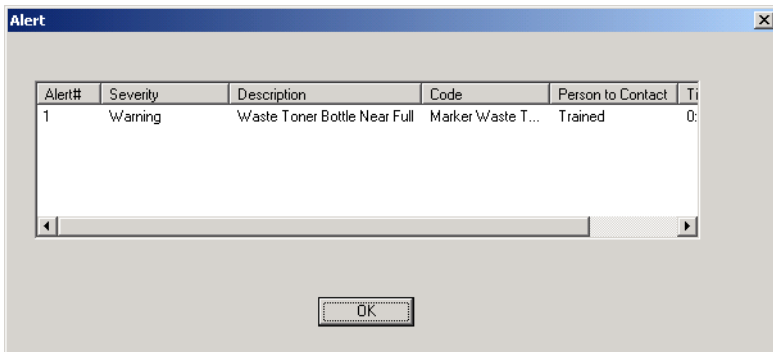
3. After you are finished, click the **OK** button to close the dialog box.


Note

- You cannot verify the following attributes unless you have NetWare Client 32 installed on your system and log in to the NetWare server.
 - NetWare Service Queue
 - NetWare Notify User

3.3 Displaying the Device Alert Property

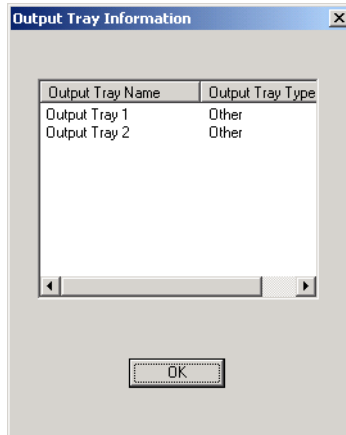
Follow the procedure described below to display the alert information for the device selected in the device list.




1. In the device list, click the icon of the device whose alert information you want to display.
2. Select **Device Alert Property** on the **File** menu. You could also click the toolbar  button.

3.4 Displaying Device Output Tray Information

Follow the procedure described below to display output tray information for the device selected in the device list.



1. In the device list, click the icon of the device whose output tray information you want to display.
2. Select **Device Output Tray Information** on the **File** menu. You could also click the toolbar  button.

3.5 Configuring a Device with PageScope Network Setup

This section describes the procedure for network printer setup with PageScope Network Setup.

First check the following points relating to your network environment. Check with your network administrator for details about the network environment.

- The protocol used on the network (TCP/IP or IPX)
- Connection format of the device (peer-to-peer or via server)

Use one of the following procedures to configure the device. The procedure you should use depends on the network connection.

For peer-to-peer printing with TCP/IP connection:

1. Verify the device setup status. See 3.2 *Verifying Device Setup Status*.
2. Setup the device TCP/IP connection. See 4.2 *Configuring TCP/IP*.
3. Setup peer-to-peer printing. See 5.1 *TCP/IP Peer-to-peer Printing*.

For peer-to-peer printing with IPX connection:

1. Verify the device setup status. See 3.2 *Verifying Device Setup Status*.
2. Setup peer-to-peer printing. See 5.2 *IPX Peer-to-peer Printing*.

For printing via a NetWare print server:

1. Verify the device setup status. See 3.2 *Verifying Device Setup Status*.
2. Setup NetWare printing. See 4.3 *NetWare Print Setup*.

After setting up the printer, specify the port in the printer driver properties, and execute the print command. For details about printing, see your printer manual.

4 Changing the Device Setup


Use the **Device Setup** dialog to change a device setup.

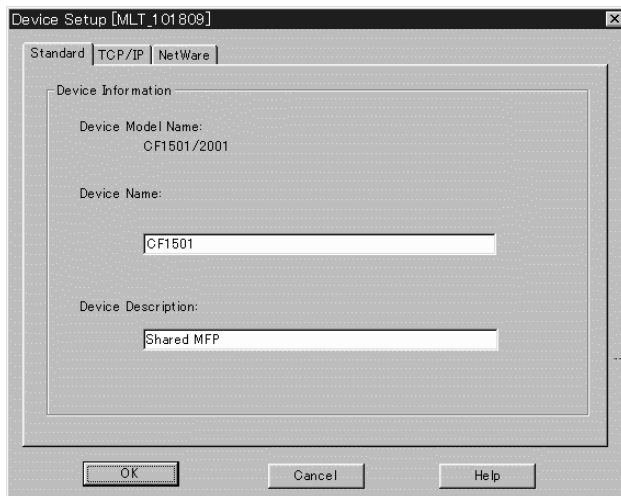
The following are the settings that can be configured when changing a device setup.

- Device Information
- TCP/IP
- NetWare Print

4.1 Configuring Device Information

Perform the following steps to configure device information.

1. On the device list, click the icon of the device whose information you want to configure.
2. Select **Device Setup** on the **Setup** menu to display the **Device Setup** dialog box.
You could also click the toolbar  button.
3. Click the **General** tab.



You can configure and view the following items on the **General** tab.

Device Model Name

This is the device model name. You cannot change the device model name here.

Device Name

This is the device management name. You can type up to 16 characters into the text box to input a new name. However, if the existing device management name exceeds 16 characters, you can type up to 255 characters for a new name.

Device Description


This is a description of the device. You can type up to 16 characters into the text box to input a new description. However, if an existing description of the device exceeds 16 characters, you can type up to 255 characters for a new description.

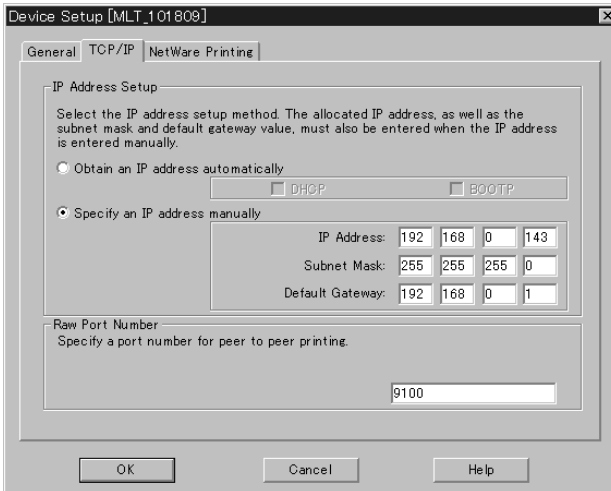
4. After you are finished making the settings you want, click the **OK** button. This displays the device properties with the changed settings in blue.
5. If the settings are correct, click the **OK** button.

The community name input dialog box appears only if the SNMP community name has been changed to something other than the default name. Type in the community name and then click **OK**.

4.2 Configuring TCP/IP

Perform the following steps to configure TCP/IP.

1. On the device list, click the icon of the device you want to configure.
2. Select **Device Setup** on the **Setup** menu to display the **Device Setup** dialog box.
You could also click the toolbar  button.
3. Click the **TCP/IP** tab.



You can configure the following items on the **TCP/IP** tab.

IP Address Setup

- **Obtain an IP address automatically**

If this option is selected, the IP address is acquired from either the DHCP server or the BOOTP server.

- **DHCP** Select to obtain the IP address from the DHCP server.
- **BOOTP** Select to obtain the IP address from the BOOTP server.

- **Specify an IP address manually**

When this option is selected, you can set the IP address manually. Enter the following values.

- **IP Address** Device IP address
- **Subnet Mask** Subnet mask used with the network
- **Default Gateway** Default IP router address for the device

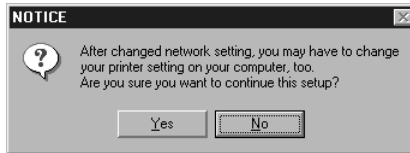
RAW Port Number

Enter the RAW port number used for peer-to-peer printing.

4. After making the settings you want, click the **OK** button. This displays the device properties with the changed settings in blue.

5. If the settings are correct, click the **OK** button.

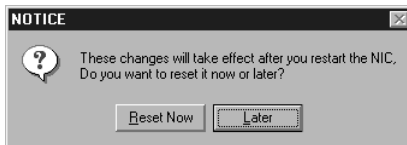
A message asking for confirmation to continue the setup appears.



6. Click the **Yes** button.

A message stating that it is necessary to reset may appear.

For equipment that can be reset, the following dialog appears.



7. If there are no problems with resetting now, click the **Reset Now** button.

Note


- The community name input dialog box appears only if the SNMP community name has been changed to something other than the default name. Type in the community name and then click **OK**.
- If both DHCP and BOOTP are selected, DHCP is given priority.

4.3 NetWare Print Setup

Note

- You must have NetWare Client 32 installed on your system in order to setup for NetWare printing.
- NetWare supervisor privileges are required in order to change the NetWare Print Setup. You must login to the NetWare network with supervisor privileges in order to configure NetWare for printing.
- You must have IPX protocol installed on your device in order to configure a NetWare print setup.
- If you have already configured a NetWare print setup with another tool, the existing configuration will be deleted when you complete this setting.

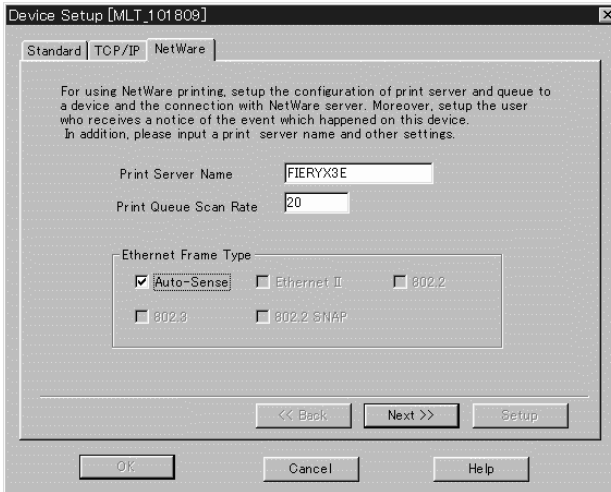
Perform the following steps to configure a device for NetWare printing.

1. On the device list, click the icon of the device you want to configure.
2. Select **Device Setup** on the **Setup** menu to display the **Device Setup** dialog box.
You could also click the toolbar  button.
3. Click the **NetWare Printing** tab.
4. Perform the following steps.
 - Set up the print server. See *4.3.1 Setting up the Print Server*.
 - Select the mode. See *4.3.2 Selecting the Mode*.
 - Set up the print queue. See *4.3.3 Selecting the Print Queue*.
 - Select users for event notification. See *4.3.4 Selecting Users for Event Notification*.
 - Verify the setup. See *4.3.5 Verifying the Setup*.

Note

- Clicking the **NetWare Printing** tab downloads the device configuration. Downloading can take anywhere from a few seconds to 20 or 30 seconds or more. Wait for the download procedure to complete before trying to do anything else.
- The community name input dialog box appears only if the SNMP community name has been changed to something other than the default name. Type in the community name and then click OK.

4.3.1 Setting up the Print Server



Perform the following steps to set up the print server for NetWare printing.

1. Type up to 26 characters into the **Print Server Name** box for the print server name.
Normally, you should leave the following items set to their initial defaults. Change these settings only when absolutely necessary for some reason.

Print Queue Scan Rate

Type in the interval, in seconds, to specify how often the print server should check the queue.

Ethernet Frame Type

Specify the Ethernet frame type.

2. After you are finished configuring the setup, click the **Next** button.

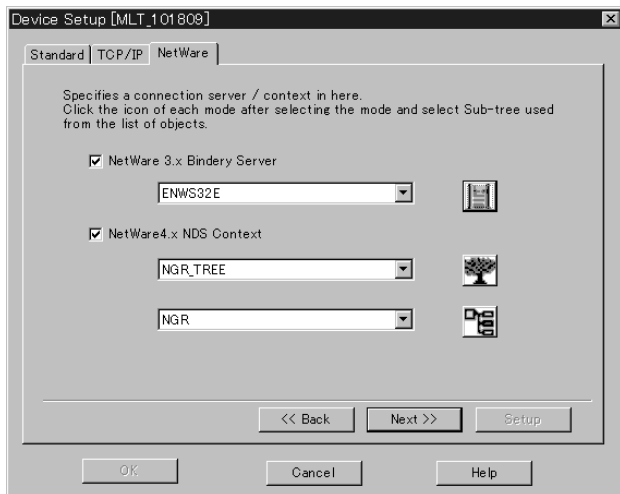
Note

- To configure a NetWare print setup, the server must be bound to at least one IPX frame.


4 Changing the Device Setup

4.3.2 Selecting the Mode


Use the procedures in this section to select the server you want to configure as the print server, or the NDS context.




If you are using bindery service (NetWare 3.x):

1. Put a check mark into the **NetWare 3.x Bindery Server** check box.
2. Click the  button to display the **Mode Select** dialog box, which shows a list of servers on the NetWare network.
3. Select the server you want to configure as the print server, and then click the **OK** button.
4. When everything is the way you want, click the **Next** button.

If you are using NDS (NetWare 4.x or later):

1. Put a check mark into the **NetWare 4.x NDS Context** check box.
2. Click the  button to display the **Mode Select** dialog box, which shows a list of NDS trees on the NetWare network.
3. Select the NDS tree you want to setup as the print server, and then click the **OK** button.

4. Click the  button to display the **Mode Select** dialog box, which shows a list of NDS contexts for the tree you selected.
5. Select the NDS context to setup the print server, and then click the **OK** button.
6. When everything is the way you want, click the **Next** button.

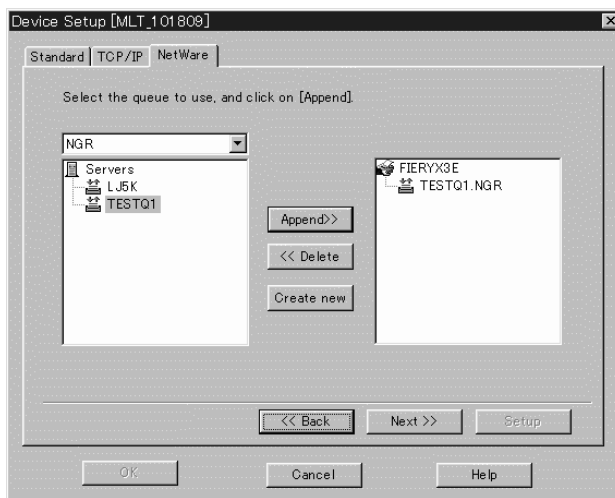
Note

- If you are logged on to the NetWare network without supervisor privileges, the NetWare login screen will appear after you finish configuring the setup. If this happens, type in the supervisor login name and password, and then click **OK**.

4 Changing the Device Setup

4.3.3 Selecting the Print Queue

Use one of the following procedures to select the print queue for the print job.



To select an existing print queue:

1. Use the upper left box to select an NDS tree (in the case of NDS) or a server (in the case of bindery service). This displays a list of print queues for the selected NDS context (in the case of NDS) or server (in the case of bindery service) in the list on the left.
2. In the list on the left, select the print queue you want to use, and then click the **Append** button to add the print queue to the list on the right.
3. To remove a print queue from the list on the right, select it and then click the **Delete** button.
4. When everything is the way you want, click the **Next** button.

To create a new print queue:

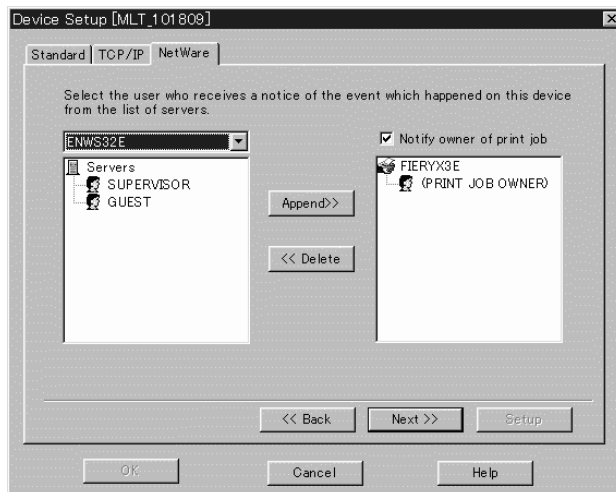
1. Use the upper left box to select an NDS tree (in the case of NDS) or a server (in the case of bindery service).
2. Click the **Create New** button to display the **Add Queue** dialog box.



3. Type up to 26 characters for the name you want to assign to the new print queue into the **Name** box.
4. Use the **Volume** list to select a volume for the new print queue. Note that you cannot change the volume for creating the new print queue when using bindery service.
5. When using NDS only, type the NDS context name into the **Context** box. Note that you cannot input a NDS context name when using bindery service.
6. When everything is the way you want, click the **OK** button.

4 Changing the Device Setup

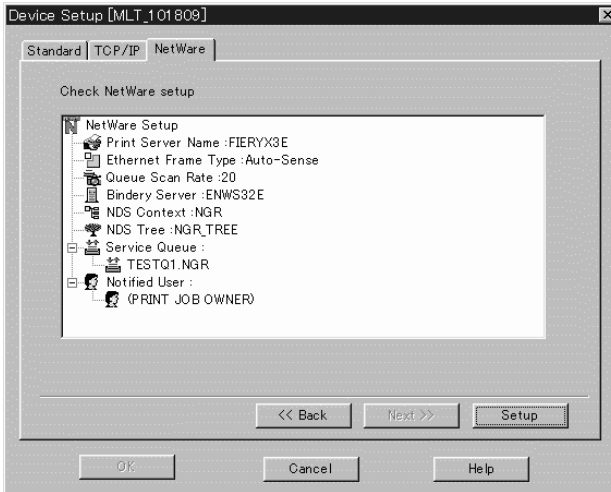
4.3.4 Selecting Users for Event Notification



Perform the following steps to select users for notification of events occurring on the device.

1. Use the upper left box to select an NDS tree (in the case of NDS) or a server (in the case of bindery service). This displays a list of users for the selected NDS context (in the case of NDS) or server (in the case of bindery service) in the list on the left.
2. In the list on the left, select a user to be notified and then click the **Append** button to add the user to the list on the right.
3. To remove a user from the list on the right, select it and then click the **Delete** button.
4. To notify the user who originated the print job of an event, put a check mark into the box next to **Notify owner of print job**. Doing so causes the **PRINT JOB OWNER** icon to appear in the list on the right.
5. When everything is the way you want, click the **Next** button.

4.3.5 Verifying the Setup



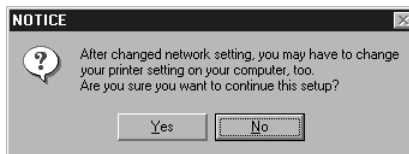
The NetWare setup details are displayed in the list.

- Click a button on the tree to expand an item.
- Click a button on the tree to collapse an item.

If you want to change something in the setup, click the **Back** button to return to the setup screen, and then make the changes you want.

If the setup is the way you want, click the **Setup** button to proceed with the setup.

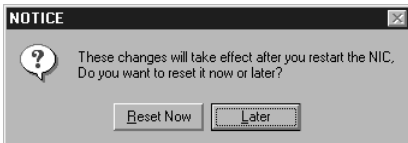
A message asking for confirmation to continue the setup appears. Click the **Yes** button.



4 Changing the Device Setup

A message stating that it is necessary to reset may appear.

If there are no problems with resetting now, click the **Reset Now** button.



5 Peer-to-peer Print Setup

Peer-to-peer printing refers to printing directly to a device on the network, without going through the server. Use the **P2P Setup** dialog box to configure peer-to-peer printing.

The information provided here shows setup procedures for the following protocols.

- TCP/IP (See 5.1 *TCP/IP Peer-to-peer Printing*)
- IPX (See 5.2 *IPX Peer-to-peer Printing*)

Note


- Peer-to-peer print setup is supported under Windows 95/98/Me only.

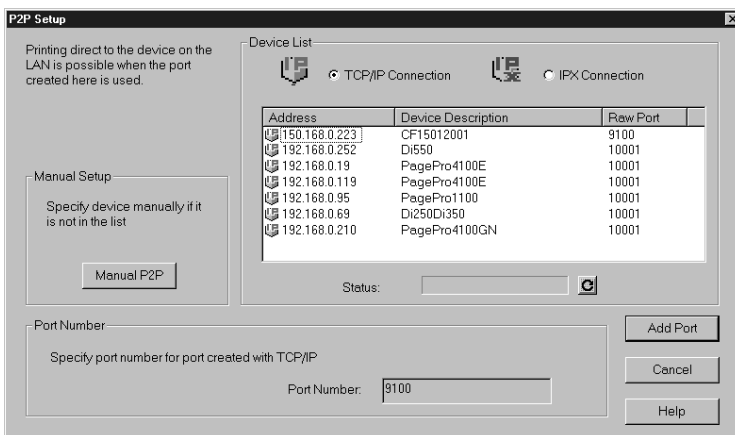
5.1 TCP/IP Peer-to-peer Printing

5.1.1 Configuring for TCP/IP Peer-to-peer Printing


Perform the following steps to configure for TCP/IP peer-to-peer printing.

1. Select **P2P Setup** on the **Setup** menu to display the **P2P Setup** dialog box.

You could also click the toolbar  button.



5 Peer-to-peer Print Setup

2. Select the **TCP/IP Connection** option under **Device List** to display a list of network devices for which ports can be created. To refresh the information in the **Device List**, click the  button under the list.
3. In the **Device List**, select the device you want to configure. If the device you want to configure is not in the list, specify it manually. See 5.1.2 *Configuring for TCP/IP Peer-to-peer Printing by Specifying the Device Manually*.
4. Check the port number to be used for TCP/IP peer-to-peer printing in the **Port Number** box. See 4.2 *Configuring TCP/IP* for details about configuring a port number.
5. Click the **Add Port** button. Check the details of the setup in the dialog box that appears.
6. If everything is the way you want, click the **OK** button.
7. When the **Success** dialog box appears, click **OK**. The **P2P Setup** dialog box appears. See 5.3 *After Creating the Peer-to-peer Port*.

Note

- The device may need to be reset after creating the port. In that case, a dialog asking if you want to reset the device immediately will appear.

5.1.2 Configuring for TCP/IP Peer-to-peer Printing by Specifying the Device Manually

Perform the following steps to specify the device manually when configuring for TCP/IP peer-to-peer printing. See *5.1.1 Configuring for TCP/IP Peer-to-peer Printing* for the procedure you should use when the device you want to configure is included in the **Device List** on the **P2P Setup** dialog box.

1. Select **P2P Setup** on the **Setup** menu to display the **P2P Setup** dialog box.
2. Click the **Manual P2P** button to display the **P2P Manual Setup** dialog box.

The screenshot shows the 'P2P Manual Setup' dialog box. It is divided into two main sections: 'TCP/IP Connection' and 'IPX Connection'. The 'TCP/IP Connection' section is active and contains the following elements: a title 'Select TCP/IP or IPX and create port', a note 'The device may be specified with the hardware address, IP address, or device name', and three radio buttons: 'Device Name (DNS Name)', 'IP Address', and 'Hardware Address'. The 'IP Address' radio button is selected, and the IP address '192.168.0.223' is entered in four separate boxes. A 'Port Number' of '9100' is entered in a text box. The 'IPX Connection' section is inactive and contains the following elements: a title 'Device may be specified with server name', a note 'Input example: KMB_460647', and two radio buttons: 'Print Server Name' and 'Network Address'. On the right side of the dialog are three buttons: 'Add Port', 'Cancel', and 'Help'.

3. Under **TCP/IP Connection**, click the device specification method you want to use to select it. The following methods are supported.
 - **Device Name (DNS name)** Specify the device using its host name.
 - **IP Address** Specify the device using its IP address.
 - **Hardware Address** Specify the device using its network interface hardware address.
4. Type the device destination into the text box that becomes enabled to the right of the method you select.

5 Peer-to-peer Print Setup


5. Type the port number for TCP/IP peer-to-peer printing into the **Port Number** box.
6. Click the **Add Port** button. Check the details of the setup in the dialog box that appears.
7. If everything is the way you want, click the **OK** button.
8. When the **Success** dialog box appears, click **OK**.
The **P2P Setup** dialog box appears. See 5.3 *After Creating the Peer-to-peer Port*.

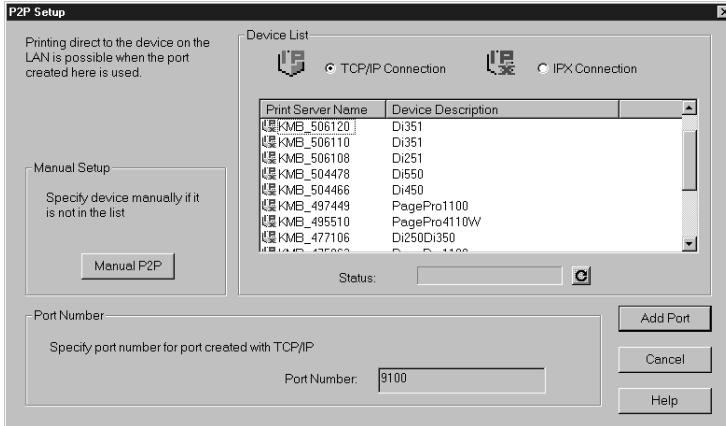
5.2 IPX Peer-to-peer Printing


5.2.1 Configuring IPX Peer-to-peer Printing

Perform the following steps to configure for IPX peer-to-peer printing.

1. Select **P2P Setup** on the **Setup** menu to display the **P2P Setup** dialog box.

You could also click the toolbar  button.




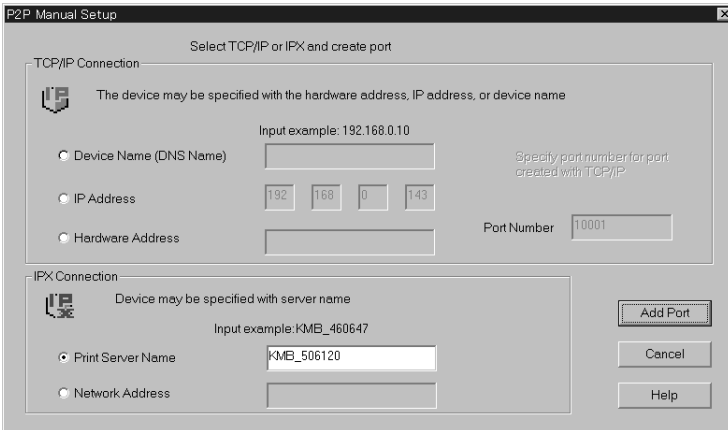
2. Select the **IPX Connection** option under **Device List** to display a list of network devices for which ports can be created.
To refresh the information in the **Device List**, click the  button under the list.
3. In the **Device List**, select the device you want to configure. If the device you want to configure is not in the list, specify it manually. See 5.2.2 *Configuring for IPX Peer-to-peer Printing by Specifying the Device Manually*.
4. Click the **Add Port** button. Check the details of the setup in the dialog box that appears.
5. If everything is the way you want, click the **OK** button.
6. When the **Success** dialog box appears, click **OK**.
The **P2P Setup** dialog box appears. See 5.3 *After Creating the Peer-to-peer Port*.

5 Peer-to-peer Print Setup

5.2.2 Configuring for IPX Peer-to-peer Printing by Specifying the Device Manually

Perform the following steps to specify the device manually when configuring for IPX peer-to-peer printing. See 5.2.1 *Configuring IPX Peer-to-peer Printing* for the procedure you should use when the device you want to configure is included in the **Device List** on the **P2P Setup** dialog box.

1. Select **P2P Setup** on the **Setup** menu to display the **P2P Setup** dialog box.
You could also click the toolbar  button.
2. Click the **Manual P2P** button to display the **P2P Manual Setup** dialog box.



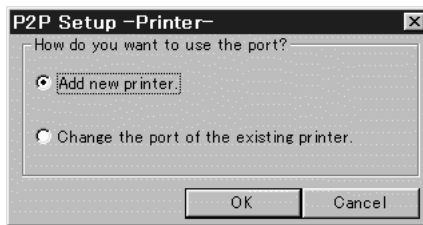
The screenshot shows the 'P2P Manual Setup' dialog box. The title bar reads 'P2P Manual Setup'. Below the title bar, the subtitle is 'Select TCP/IP or IPX and create port'. The dialog is split into two main sections. The top section is 'TCP/IP Connection' and contains a radio button for 'Device Name (DNS Name)', an 'IP Address' field with the example '192.168.0.143', and a 'Port Number' field with '10001'. The bottom section is 'IPX Connection' and contains a radio button for 'Print Server Name' with the example 'KME_506120'. On the right side of the dialog, there are three buttons: 'Add Port', 'Cancel', and 'Help'.

3. Under **IPX Connection**, click the device specification method you want to use to select it. The following methods are supported.
 - **Print Server Name** Specify the device using its print server name. (You could verify the Print Server Name in NetWare setting. See 4.3.1 *Setting up the Print Server*)
 - **Network Address** Specify the device using its IPX address.
4. Type the device destination into the text box that becomes enabled to the right of the method you select.

5. Click the **Add Port** button. Check the details of the setup in the dialog box that appears.
6. If everything is the way you want, click the **OK** button.
7. When the **Success** dialog box appears, click **OK**.
The **P2P Setup** dialog box appears. See 5.3 *After Creating the Peer-to-peer Port*.

5.3 After Creating the Peer-to-peer Port

You can use the dialog box below to associate the port you created with a printer.



You can select the following items.

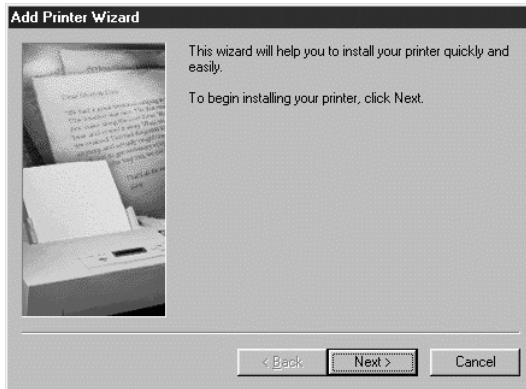
- **Add new printer:**
Select this option when you want to allocate a new printer to a port you created in 5.1 or 5.2.
- **Change the port of the existing printer:**
Select this option when you want to change the port for an existing printer to a port you created in 5.1 or 5.2.

5 Peer-to-peer Print Setup

To add a new printer:

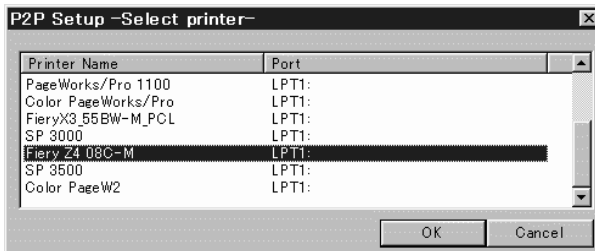
Select **Add new printer** and then click the **OK** button.

This displays the Windows **Add Printer Wizard** screen. Follow the instructions on the screen to add the new printer.



To change the port of an existing printer:

1. Select **Change the port of the existing printer** and then click the **OK** button. This displays a list of printers.



2. Use the list to select the printer you want to allocate to the port, and then click the **OK** button.

6 Option Setup

Use the **Option** dialog box to configure PageScope Network Setup options.

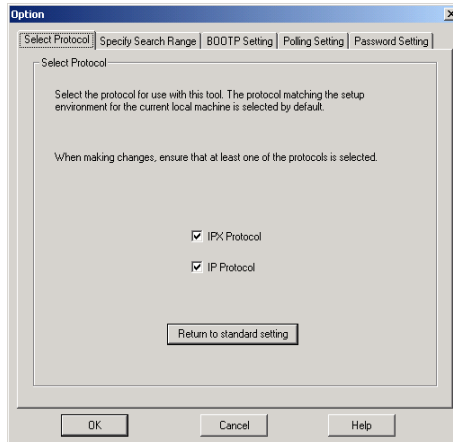
The following are the settings that can be configured when changing the option setup.

- Protocol (See 6.1 *Selecting a Protocol*)
- Search Range (See 6.2 *Specifying the Search Range*)
- Navigation mode browser (See 6.3 *Specifying BOOTP*)
- BOOTP Setting (See 6.3 *Specifying BOOTP*)

6.1 Selecting a Protocol

Perform the steps below to select the protocol for use with PageScope Network Setup. The functions available with PageScope Network Setup depend on the protocol that is currently selected.

1. Select **Option** on the **Setup** menu to display the **Option** dialog box.
2. Click the **Select Protocol** tab.



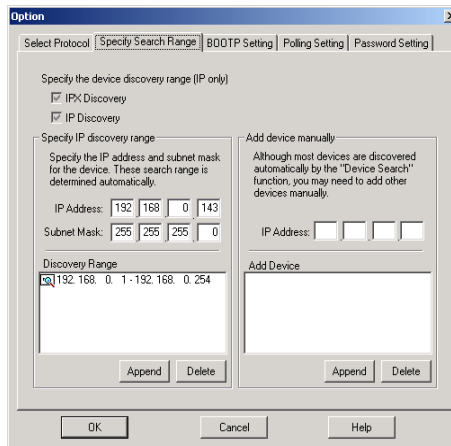
6 Option Setup

- Put a check mark into the box next to option you want to use under **Select Protocol**. You must select at least one protocol, however both can be selected.
Click the **Return to standard setting** button to return to the protocol to the standard default.
- Click the **OK** button.
- On the confirmation dialog box that appears, click the **OK** button.

6.2 Specifying the Search Range

When using IP protocol, perform the steps below to specify the network device search range. Note that you cannot specify the search range when using IPX protocol.

- Select **Option** on the **Setup** menu to display the **Option** dialog box.
- Click the **Specify Search Range** tab.



- A check mark is in the box next to the protocol that is currently selected on the **Select Protocol** tab. See *6.1 Selecting a Protocol* for details about changing the protocol setting.

Specify IP discovery range:

Perform the steps below to specify the IP address range for the network where the device is searched for. PageScope Network Setup searches for devices on the broadcast address of the network specified here.

- a. Type the IP address of the device you want to find into the **IP Address** box.
- b. Type the subnet mask used by the network into the **Subnet Mask** box.
- c. Click the **Append** button.
- d. The search range is set automatically in accordance with the values you entered in the previous steps, and the resulting search range appears in the **Discovery Range** box.

Add device manually:

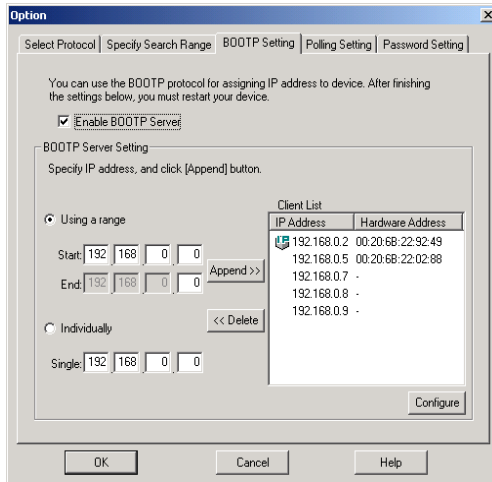
A device that cannot be automatically searched for can be displayed in the device list by entering its IP address.

- a. Type the IP address of the device you want to display into the **IP Address** box.
- b. Click the **Append** button.
If the entered IP address is accessed and there is a response, that IP address is added to the **Add Device** box.
To remove an address appearing in the **Add Device** box, select it, and then click the **Delete** button.
4. If everything is the way you want, click the **OK** button.
5. On the confirmation dialog box that appears, click the **OK** button.

6.3 Specifying BOOTP

Perform the following steps to specify the settings for operation as a BOOTP server.

1. Select **Option** on the **Setup** menu to display the **Option** dialog box.
2. Click the **BOOTP Setting** tab.



3. To operate as a BOOTP server, put a check mark beside **Enable BOOTP Server**, and then specify the following BOOTP server settings.

To specify an IP address range for assigning the BOOTP server:

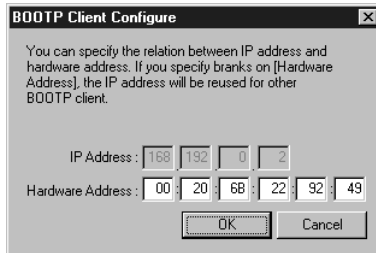
1. Select the **Using a range** option.
2. Enter IP addresses into the **Start** and **End** boxes, and then click the **Append** button.
The specified IP addresses are added to the **Client List** box.

To specify a single IP address for assigning the BOOTP server:

1. Select the **Individually** option.
2. Enter an IP address into the **Single** box, and then click the **Append** button.
The specified IP address is added to the **Client List** box.

To assign a particular hardware address to an IP address in the Client List box:


1. From the **Client List** box, select the IP address that will be assigned the hardware address.
2. Click the **Configure** button.
A dialog box for setting the hardware address appears.



3. Enter the hardware address into the **Hardware Address** box.
4. Click the **OK** button.
The setting appears in the **Client List** box.
To remove the setting for the IP address with a hardware address assigned, delete any values entered into the **Hardware Address** box, and then click the **OK** button.

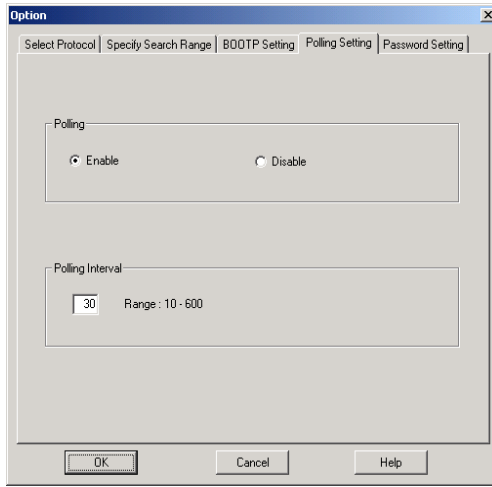
After specifying the BOOTP settings, click the **OK** button.

Note

- After sending the IP addresses to a device, the  icon is displayed in the **Client List** box. This mark means that the address was assigned while the PageScope Network Setup is working.

6.4 Specifying Polling Settings

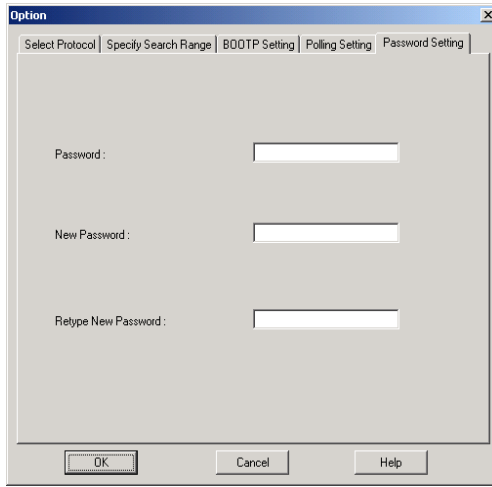
The function for monitoring the device status can be turned on or off, and the interval for polling the devices can be specified.



- **Polling** To monitor the device status, select **Enable**. To quit monitoring the devices, select **Disable**.
- **Polling Interval** Type in the interval, in seconds, to specify how often the devices should be polled.

6.5 Changing the Password

The password used to start up PageScope Network Setup can be changed.



1. Type in the current password into the **Password** box.
2. Type the new password (maximum 16 characters) into the **New Password** box.
3. Retype the new password into the **Retype New Password** box.
4. Click the **OK** button.

Note

- The default password is "admin".

Appendix Glossary

Bindery service

A system used to manage network user information in a database for each server. Mainly, used with NetWare 3.x and earlier.

BOOTP

A protocol used to automatically allocate TCP/IP parameters (eg. IP address) to the client on the TCP/IP network from the server.

DHCP

A protocol used to dynamically allocate IP addresses to the host.

Frame type

Packet data format used with Ethernet.

Hardware address

A unique hardware address assigned to the network interface of the device connected to an Ethernet.

Host name

A character string representing the name of the host, which is allocated to the IP address.

IP address

An address identifying the host at the data source and destination with an IP connection.

IPX address

An address identifying the data source and destination nodes with the IPX connection.

NDS

A system for managing all network resources in a hierarchical database at a single point. Mainly, used with NetWare 4.x and later.

Port number

A number used to identify application programs at the data source and destination with the IP connection.

RAW port number

The number of the port at which the device receives data when print data is sent directly to the device.

Subnet mask

A mask value used to delineate between the IP address network and host addresses.



KONICA MINOLTA

<http://konicaminolta.com>

Copyright

4343-PS008-07

2002 KONICA MINOLTA BUSINESS TECHNOLOGIES, INC.

2004. 3

Free Manuals Download Website

<http://myh66.com>

<http://usermanuals.us>

<http://www.somanuals.com>

<http://www.4manuals.cc>

<http://www.manual-lib.com>

<http://www.404manual.com>

<http://www.luxmanual.com>

<http://aubethermostatmanual.com>

Golf course search by state

<http://golfingnear.com>

Email search by domain

<http://emailbydomain.com>

Auto manuals search

<http://auto.somanuals.com>

TV manuals search

<http://tv.somanuals.com>