



*Dimàge Scan Elite*  
F-2900



**E** INSTRUCTION MANUAL

9224-2885-11 H-A909

Thank you for purchasing the Minolta Dimâge Scan Elite. The Dimâge Scan Elite F-2900 is a dual format film scanner capable of scanning 35mm and with the optional AD-10 APS Adapter, Advanced Photo System film.

This manual has been designed to help you understand the operation of your scanner. Please read this manual thoroughly to realise all the benefits of your scanner.

The instructions in this manual assume you have a working knowledge of the operating system for your computer (Macintosh OS, Windows 95, Windows 98, or Windows NT) and its conventions. Familiarity with the mouse and standard operating system menus and commands is necessary before operating the driver software for the Dimâge Scan Elite.

This manual does not instruct in the:

- basic use of personal computers.
- use of Windows 95, Windows 98, Windows NT, or Macintosh OS.
- use of Adobe Photoshop, Paint Shop Pro, or Corel Draw.

The examples in this manual use Windows 95. The appearance of some screens may differ from the examples when using Windows 98, Windows NT, or the Macintosh operating system.

Microsoft, Windows<sup>®</sup>, Windows 95<sup>®</sup>, Windows 98<sup>®</sup>, and Windows NT<sup>®</sup> are registered trademarks of the Microsoft Corporation.

Macintosh<sup>™</sup>, Apple<sup>®</sup>, and Power Macintosh<sup>®</sup> are registered trademarks of Apple Computer, Inc.

Adobe<sup>®</sup> and Photoshop<sup>™</sup> are registered trademarks of Adobe Systems Incorporated.

Corel Draw<sup>™</sup> is a trademark of the Corel Corporation.

Paint Shop Pro is the copyright of Met's Corporation.

Other corporate and product names are the trademarks and registered trademarks of their respective companies.

- Changes or modifications not approved by the party responsible for compliance could void the user's authority to operate the equipment.
- This manual may not be copied in part or whole without prior written permission from Minolta Co., Ltd. ©1999 Minolta Co., Ltd.
- Every necessary caution has been taken to ensure the accuracy of this instruction manual. Please contact us if you have any questions, find any errors, or notice missing information.
- Minolta is not responsible for loss, damage, or other results occurring during the operation of this product.



This mark certifies that this product meets the requirements of the EU (European Union) concerning interference causing equipment regulations. CE stands for Conformité Européenne.

Film Scanner: Dimâge Scan Elite



Tested to comply  
with FCC standards.

FOR HOME OR OFFICE USE

This device complies with Part 15 of the FCC Rules. Operation is subject to the following conditions: (1) This device may not cause harmful interference, and (2) this device must accept any interference received, including interference that may cause undesired operation. To meet FCC regulations, the SCSI cables used with this scanner must be equipped with ferrite cores.

This Class B digital apparatus complies with Canadian ICES-0003.

Cet appareil numérique de la classe B est conforme à la norm NMB-003 du Canada.

Tested by the Minolta Corporation 101 Williams Drive Ramsey, New Jersey 07446 USA

Please read and understand each caution before using this product.

 **WARNING**

**To avoid fire or electric shock:**

- Use only within the voltage range specified on the back of unit.
- Do not expose this unit to liquids.
- Do not insert metal objects into this unit.
- Do not touch the cord or plug if your hands are wet.
- Unplug this unit when it is not in use.

**Improper use of the power cord may result in fire or electric shock.**

- Insert the plug securely into an electrical outlet.
- Do not pull on the cord. Grasp the plug when removing the power cord from an outlet.
- Do not scratch, twist, modify, heat, or place a heavy object on the power cord.
- Do not connect the ground to a gas pipe, telephone ground, or a water pipe. Improper grounding can result in electric shock.



**This product must have sufficient ventilation while in use. Blocked ventilation ducts may cause the unit to overheat, increasing the risk of fire.**

- Do not use or store this product in dusty or very humid areas.
- This product should be operated in the upright position only. Do not stack any objects on this product.

**If there is smoke, a strange smell, or any other unusual conditions, shut down and unplug the unit, then contact a Minolta Service Facility.**

**Do not attempt to disassemble this product. It contains high-voltage circuits. Take the product to a Minolta Service facility for repairs.**



 **CAUTION**

**Unexpected damage may occur if this unit is left unattended near young children.**

**CPU:** IBM PC/AT compatible with An Intel Pentium or later processor or better.  
An Intel Pentium or later when Windows NT 4.0 is installed.

- Support cannot be provided for custom or home built machines.

**Operating System:** Windows 95 (incl. OSR2), Windows 98, or Windows NT 4.0.

**Memory:** A minimum of 32 MB RAM.

**Hard Disk Space:** 90 MB of available hard disk space.

**SCSI Board:** The following Adaptec SCSI boards are recommended for this device:

AVA-1505AE	AVA-2902E	AHA-1510B
AHA-1520B	AHA-1540CP	AHA-2940
AHA-2940J	AHA-2940U	AHA-2940N
AHA-2940AU	AHA-2940W	AHA-2940UW
AHA-2910B	AHA-2910C	AHA-2920C

- The AHA-2940N SCSI board has been tested and approved for use on NEC PC-9821 series machines.
- Do not use AVA-1505AE, AHA-1520B, and AHA-1540CP SCSI boards with NEC PC98NX Series machines.
- Support will not be provided for malfunctions or problems caused by the use of untested SCSI boards.
- Depending upon the SCSI board an optional adaptor may be required.

**Monitor:** XGA (1024 x 768) or better. VGA (640 x 480) can be used.

**Other:** TWAIN driver is compatible with Photoshop ver. 3.05, 4.0.1, and 5.0.2.  
Photoshop LE Ver. 5.0  
Paint Shop Pro 5.0E, Corel Photo Paint 8.

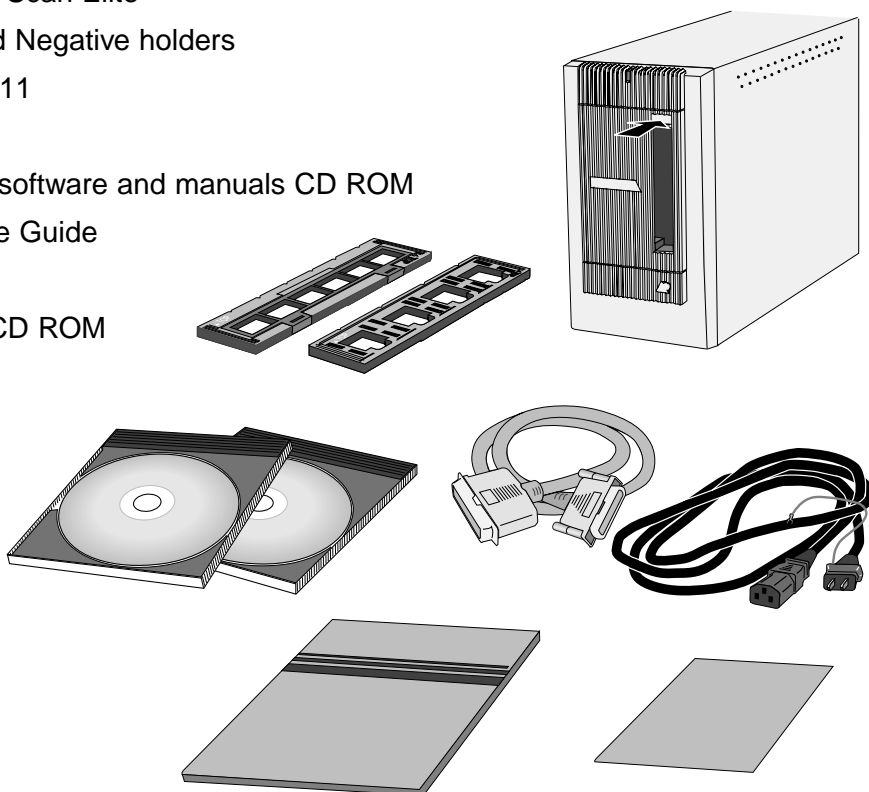
## SYSTEM REQUIREMENTS – MACINTOSH

- CPU:** Power PC
- Operating System:** Mac OS 7.5 to 8.6
- Memory:** A minimum of 8 MB application RAM in addition to the requirements for the Mac OS and Adobe Photoshop™
- Hard Disk Space:** 90 MB of available hard disk space.
- Monitor:** 13 inch monitor capable of displaying 32,000 colors.
- SCSI board:** Standard SCSI board (SCSI expansion card inserted in PCI/NuBus must not be used)  
**New Power Macintosh G3 series (Blue and White) use:**  
Adaptec PowerDomain 2940UW, PowreDomain 1940U2W,  
PowerDomain 2930U or SCSI Card 2906.
- Other:** Plug-in is compatible with Photoshop ver. 3.05, ver. 4.01 or ver.5.02.  
Photoshop LE Ver. 5.0.  
ColorSync profile (DS Elite profile) is included.  
Turn off Virtual Memory and the Modern Memory Manager.

## PACKAGE CONTENTS

The following contents should be included in this package.

1. Minolta Dimâge Scan Elite
2. 35mm Slide and Negative holders
3. SCSI cable SC-11
4. AC power cord
5. DS\_Elite driver software and manuals CD ROM
6. Quick Reference Guide
7. Warranty card
8. Photoshop LE CD ROM



### Software Registration

Please register this software before using it...

Once registered, you will receive technical support, software upgrade and product information. Complete and return the enclosed Product & Software Registration form after detaching it from the Warranty. No postage is necessary.

- The information you provide is confidential and will only be used by Minolta Customer Service and Product Research & Development.

# TABLE OF CONTENTS

FOR PROPER AND SAFE USE .....	1
SYSTEM REQUIREMENTS PC/AT .....	2
SYSTEM REQUIREMENTS Macintosh .....	3
PACKAGE CONTENTS .....	4
TABLE OF CONTENTS .....	5
NAMES OF PARTS .....	6
<b>SCANNER SETUP</b>	
Setting the SCSI ID .....	8
Connecting the Hardware .....	9
Installing the Software PC/AT .....	12
Installing the Software Macintosh .....	15
<b>STANDARD OPERATION</b>	
Launching the Software .....	18
<i>Main Window Command Window - Names of Parts</i> .....	20
Setting the Preferences .....	21
Loading the Film Holder .....	22
Inserting the Film Holder into the Scanner .....	24
Setting the Film Type .....	25
Prescan .....	26
Auto-Exposure Lock .....	27
AE Area Lock .....	28
Orienting the Image .....	29
Image Correction .....	34
Image Correction - Tone Curves/Histogram .....	35
Image Correction - Brightness/Contrast/Color Balance .....	40
Image Correction - Hue/Saturation/Lightness .....	42
Image Correction - Variation Correction .....	44
Image Correction - Snapshot .....	47
Image Correction - Full-Screen View .....	48
Image Correction Job - Job Save/Job Load .....	49
Navigation .....	51
Final Scan .....	54
<b>SCANNING APS FILM</b>	
Launch Software .....	56
Specify Film Type .....	56
Preferences - APS Settings .....	57
APS Adapter - Names of Parts .....	58
Loading the APS Adapter .....	58
Inserting the APS Adapter into the Scanner .....	59
Index Scan .....	60
<i>Index tab - Names of Parts</i> .....	60
Preview and Image Correction .....	63
Scanning the Image .....	64
Removing the APS Adapter .....	65
<b>APPENDIX</b>	
Color Matching .....	68
Scan Settings .....	70
Creating/Deleting Scan Job Files .....	73
Scan Job File List .....	75
Glossary .....	78
Trouble Shooting .....	79
Specifications .....	81
User Technical Support .....	82

# SCANNER – NAMES OF PARTS

1. Indicator lamp

2. Film slot

3. Film door

4. Power switch

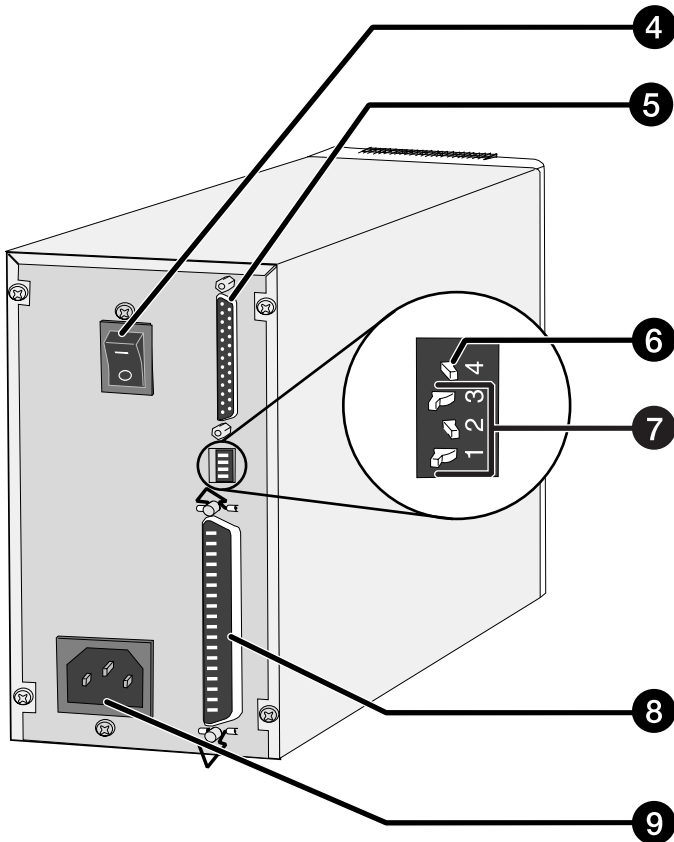
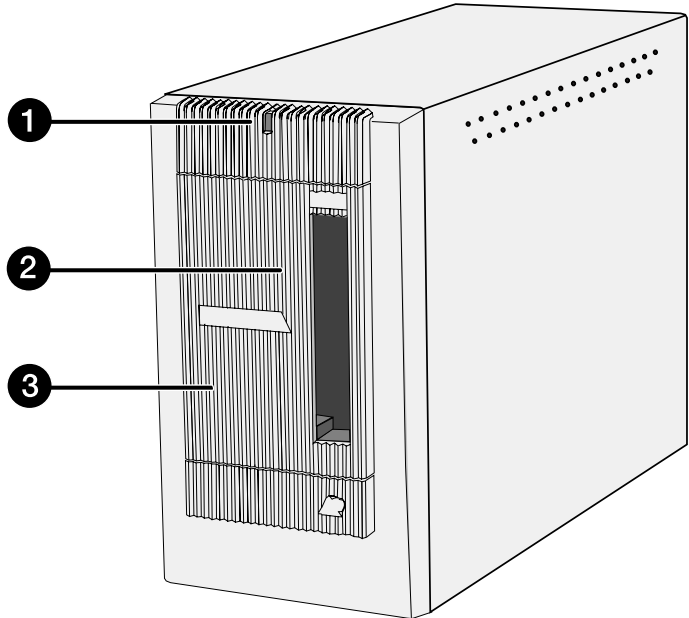
5. SCSI port - DB25

6. Terminator power switch

7. SCSI ID switches

8. SCSI port - SCSI-1

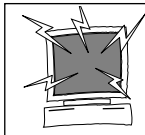
9. AC socket





# SCANNER SETUP

## SETTING THE SCSI ID



Turn off the computer and all the devices in the SCSI chain before changing SCSI IDs, connecting, or disconnecting SCSI cables. Hardware damage may occur if this precaution is not followed.

A SCSI ID is a unique address you assign to each SCSI device connected to your computer. The SCSI ID range of your computer is from 0 to 7, however some ID's are already occupied.

	Occupied SCSI ID
<b>IBM PC/AT</b>	7 - SCSI host adapter
<b>Macintosh</b>	0 - internal hard drive* 3 - internal CD ROM drive** 7 - operating system

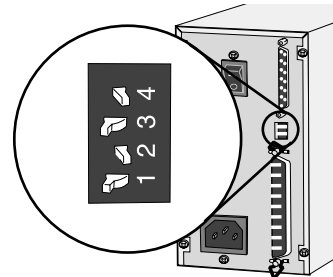
\* IDE Macintosh systems do not use SCSI ID 0 for the hard drive.

\*\* SCSI ID 3 is available on the external bus on Macintosh systems with a dual bus.






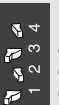


### Setting the SCSI ID

1. Turn off the computer and all connected SCSI devices.
2. Determine which SCSI IDs are not being used.
3. Using a pointed object, set the switches to an unused SCSI ID.

- The Dimâge Scan Elite's SCSI ID is factory preset to 5. If 5 is not occupied, there is no need to change the SCSI ID.
- Two operating SCSI devices in the same SCSI chain cannot share a SCSI ID.



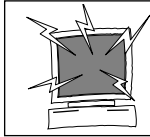
### SCSI ID Dip Switch Settings

	OFF		OFF		OFF		OFF		ON		ON		ON		ON
0	OFF	1	OFF	2	ON	3	ON	4	OFF	5	ON	6	ON	7	ON

### Connecting the SCSI Cable

This scanner has been packaged with the SCSI cable SC-11 (DB25-to-SCSI-1). See your dealer if you require a different SCSI cable.

- To meet FCC regulations, the SCSI cables used with this scanner must be equipped with ferrite cores.

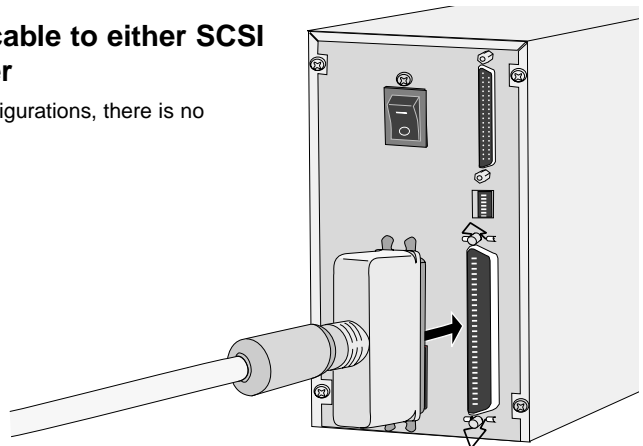


**BEFORE YOU BEGIN...  
TURN THE COMPUTER AND ALL CONNECTED  
DEVICES OFF.**

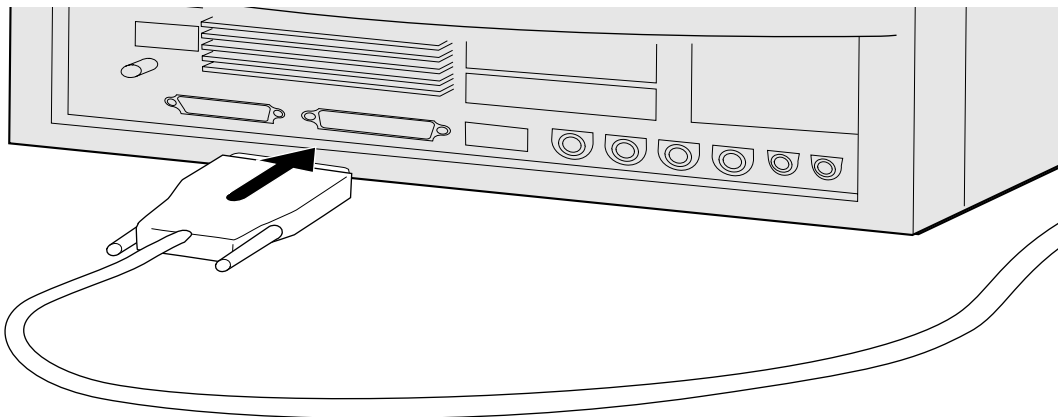
**1. Place the scanner on a level surface.**

**2. Connect one end of the SCSI cable to either SCSI port on the back of the scanner**

- Either SCSI port can be used for other configurations, there is no dedicated in or out port.



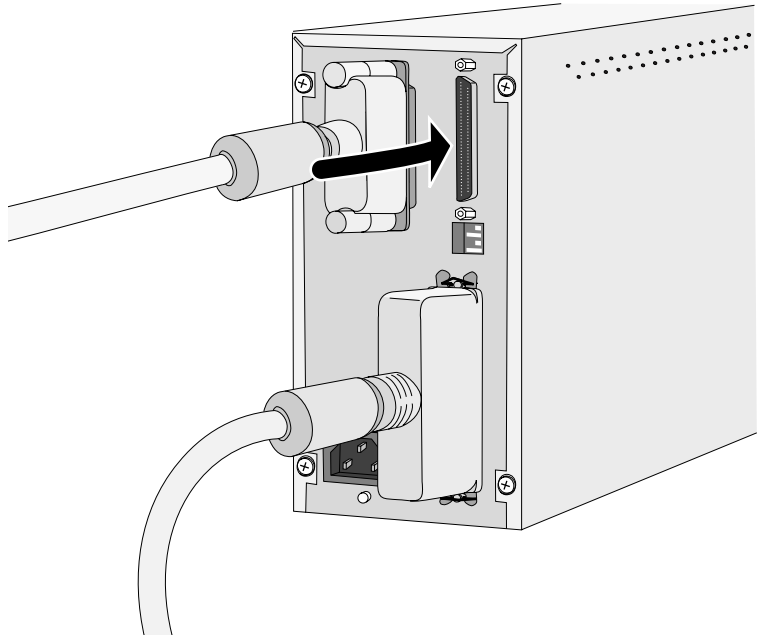
**3. Connect the other end of the SCSI cable to the SCSI port on the computer or the last device in the SCSI chain.**



*Continued on the following page.*

## If there are other devices in your SCSI chain...

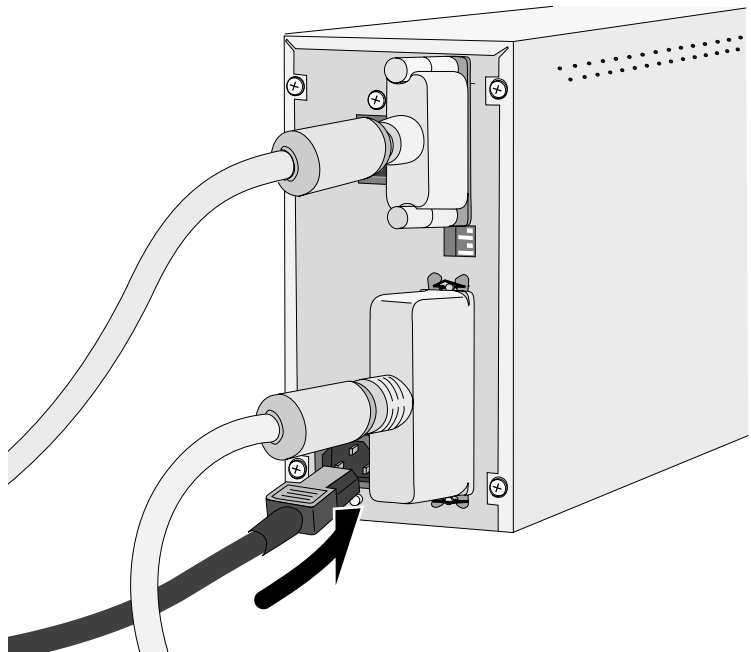
4. Plug the SCSI cable from the next device into the open port on the back of the scanner.



5. Plug the power cord into the scanner's AC socket, then plug it into a grounded outlet.

**NOTE:**

This device is to be used with a power source within the voltage as specified on the back of unit.



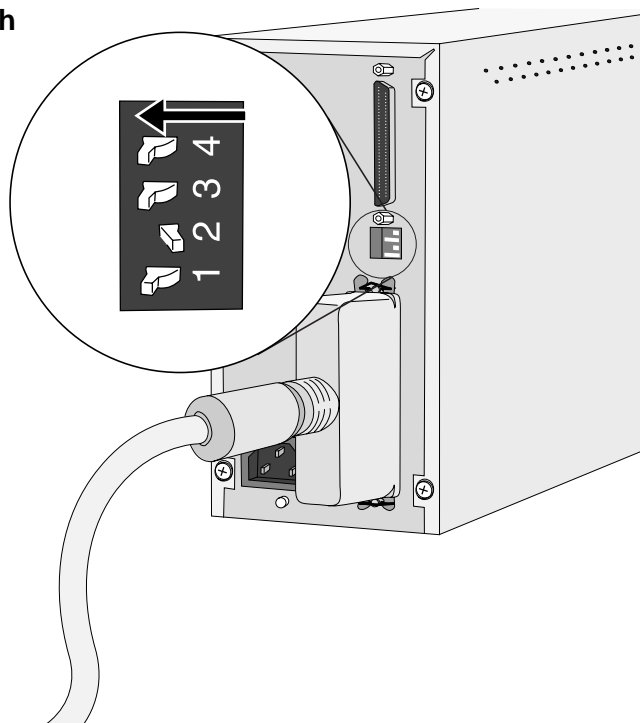
## If the Dimâge Scan Elite is the last or only device in your SCSI chain...

### 4. Turn the terminator power switch (switch 4) to ON.

- An external terminator is not necessary with this scanner.

**NOTE:**

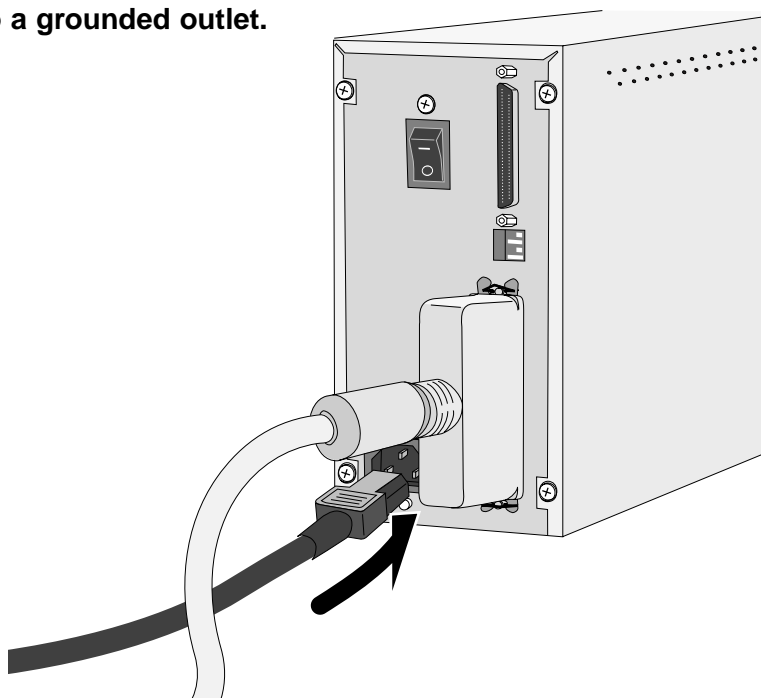
Terminating the SCSI chain helps to suppress electronic noise in the SCSI chain. Not terminating the SCSI chain can cause slowdowns, data errors, crashes, and other unpredictable errors.



### 5. Plug the power cord into the scanner's AC socket, then plug it into a grounded outlet.

**NOTE:**

This device is to be used with a power source within the voltage as specified on the back of unit.



## WINDOWS 95/ WINDOWS 98 WINDOWS NT

Dimâge Scan Elite for Windows Setup installs the Twain and Twain\_32 driver software into the drive and folder you select.

- The appearance and/or wording of some dialog boxes may vary depending on the version of Windows running on your machine.
- These installation instructions assume drive D is the CD-ROM drive.

### 1. Turn on the scanner, then turn on the PC.

### 2. Start the Windows operating system.

**This step varies with your specific operating software...**

#### Windows 95

- The New Hardware Found dialog box will appear.



### 3. Click on Cancel.

- This dialog box may appear several times. Repeat step 3 until the dialog box no longer appears.

#### Windows NT

### 3. Select Start > Settings > Control Panel, then double-click on the SCSI Adapters icon. Confirm that Minolta #2885 appears as a connected device for your SCSI board.

- If Minolta #2885 does not appear, turn the system off and check all the connections. Repeat the procedure.

#### Windows 95 Release 2 (OSR2) and Windows 98

- The Device Wizard dialog box will appear.



### 3. Click on Next until the Unknown Device window appears...

...then click on Finish.

- This dialog box may appear several times. Repeat step 3 until the dialog box no longer appears.

### 4. Insert the Dimâge Scan Elite CD-ROM into the CD-ROM drive.

5. Select **Run** from the Start menu.

The Run dialog box will appear.



6. Select

**D:\DRIVER\ENGLISH\Setup.exe**  
from the Open drop-down list, then  
click on **OK**.

- If your CD-ROM drive is not the D drive, replace the D with the appropriate designation for your CD-ROM drive.

7. Click on **Next**.

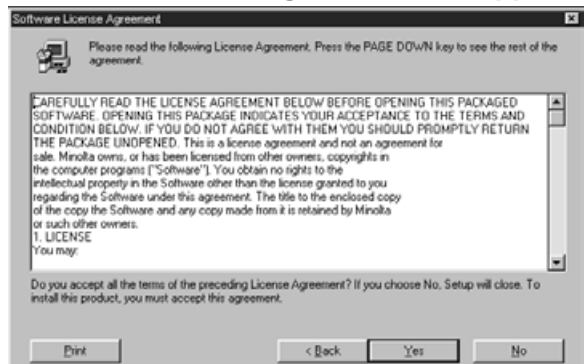
The installer flash will appear.



The Software License Agreement will appear.

8. After reading the agreement, click on **Yes**.

- If you do not agree to the conditions stated in the End-User License Agreement, click on **No** and the software will not be installed.



The Choose Destination Location dialog box will appear.

9. Click on **Browse** to select another destination directory...

- An install directory and path can also be entered directly into the install path list box.

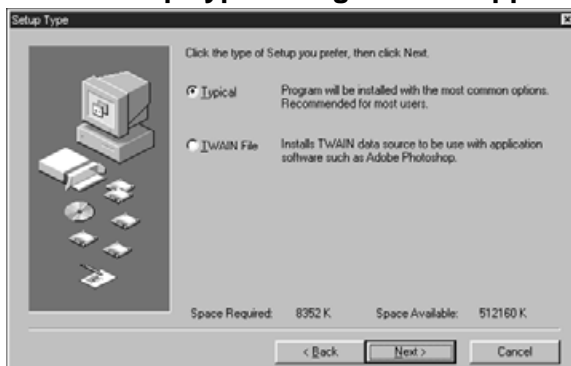
then click on **Next**.



*Continued on the following page.*

10. Choose either **Typical** or **TWAIN Files** install, then click on **Next**.

The **Setup Type** dialog box will appear.



The **Select Program Folder** dialog box will appear.

11. Click on **Next**.  
• Setup will begin.



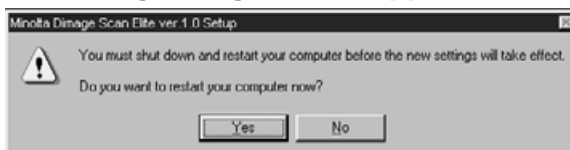
The **Setup Successful** dialog box will appear.

12. Click on **Close**.

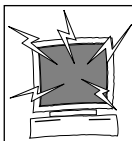


The following dialog box will appear.



13. Click on **Yes**.







Please remove or disable any antivirus system extensions before launching this installer. These extensions may conflict with the operation of this installer. Replace or re-enable them when installation is complete. Hold the shift key down during startup to disable the extensions.

1. Turn on the Dimâge Scan Elite, then turn on your Macintosh.
2. Quit any open applications.
3. Insert the Dimâge Scan Elite CD-ROM into the CD-ROM drive.
  -  will appear on the desktop.
4. Double-click on .
- The driver folders will appear.
5. Double-click on Driver folder.
  - The language folders will appear.
6. Open the English language folder, then double click on the Dimâge Scan Elite Installer.

The installer's start-up screen will appear.

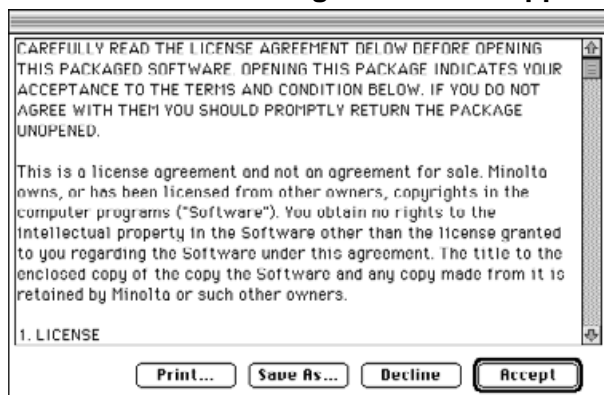
7. Click on .



The End-User License Agreement will appear.

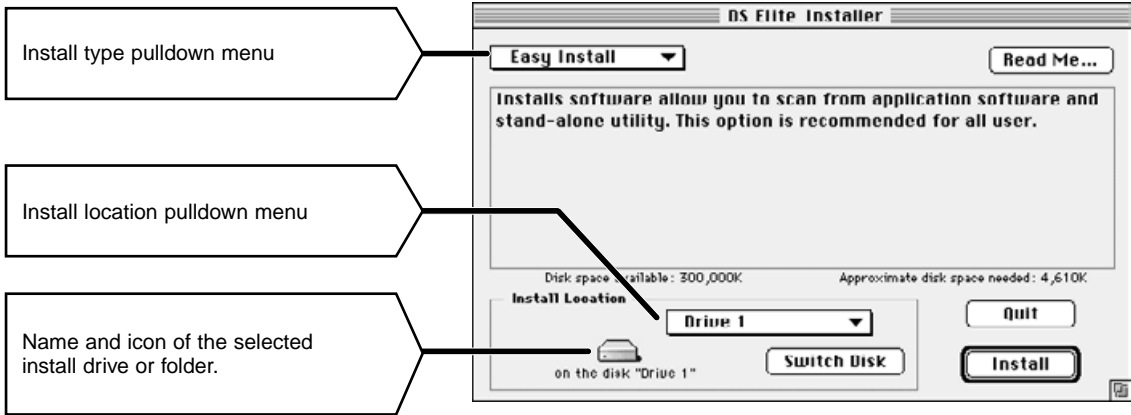
8. Click on .

- If you do not agree to the conditions stated in the End-User License Agreement, click on Decline and the software will not be installed.

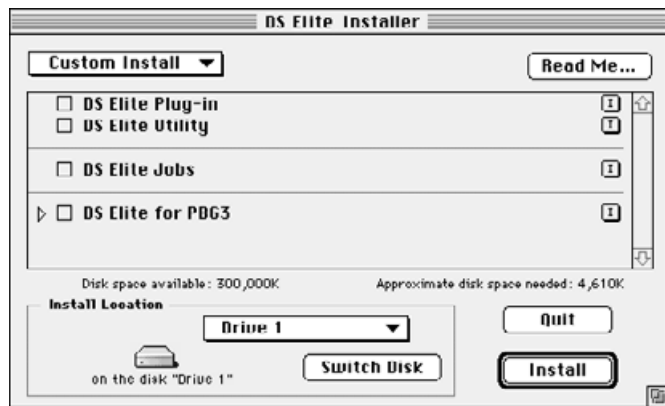


*Continued on the following page.*

The following dialog box will appear.



- If you have Power Book G3, select the DS Elite for PBG3 from the Install type pull-down menu.



**9. Select the install drive (or folder) and type from the pull-down menus.**

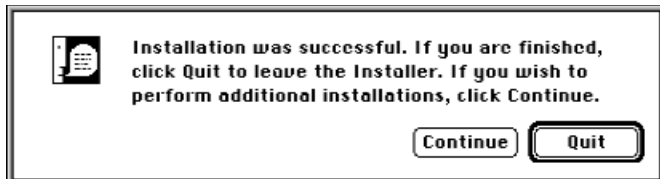
- You can also click on **Switch Disk** to select an install drive.

**10. Click on **Install**.**

The following message appears when the installer is finished.

**11. Click on **Quit**.**

- The software will be installed in a new folder titled Dimâge Scan Elite.
- If Easy Install was chosen, the Dimâge Scan Elite folder will contain the following items: DS\_Elite Utility, DS\_Elite Plug-in, and Read Me file.



**12. Drag the DS Elite Plug-in to the Import/Export folder in the Adobe Photoshop Plug-ins folder.**

# STANDARD OPERATION

## SCAN FLOW

**Launch the Software**

**Set the Preferences**

**Load the Film Holder**

**Insert the Film Holder**

**Specify the Film Type**

**Prescan**

**Orient the Image**

**Correct the Brightness,  
Contrast, and Color**

**Specify the Job Type**

**Scan**

**Save**

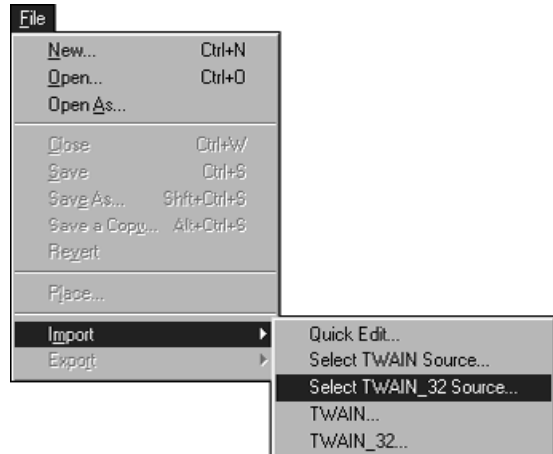
The TWAIN driver lets you control the software through another application, such as your image editing software.

## Launching the TWAIN Driver — Windows

This manual uses Adobe Photoshop 4.0.1 as the host application. Commands may vary among applications.

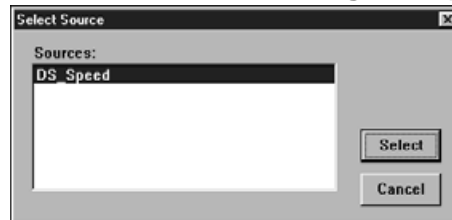
1. Open the host application.

2. Select File > Import > Select TWAIN\_32 Source...

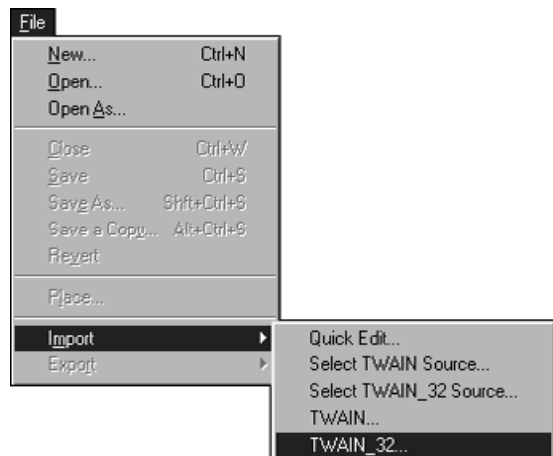


The Select Source dialog box appears.

3. Select DS\_Elite, then click on Select.



4. Select File > Import > TWAIN\_32.



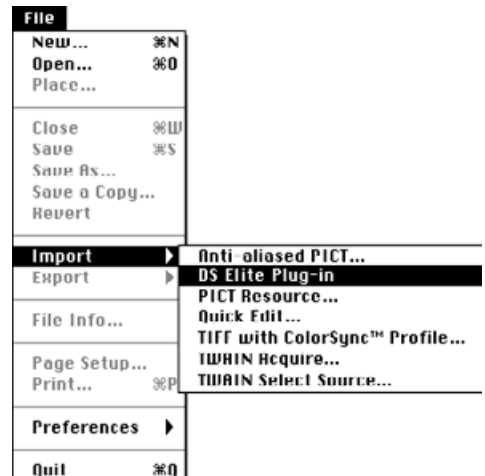
*The software is ready for use when the Main window appears (p.20).*

## LAUNCHING THE SOFTWARE

The plug-in software lets you access the software through Adobe Photoshop.

### Launching the Plug-in — Macintosh

1. Launch Adobe Photoshop.
2. Photoshop 4.0.1 and newer:  
Select File > Import > DS\_Elite Plug-in.  
Photoshop 3.0.5:  
Select File > Acquire > DS\_Elite Plug-in



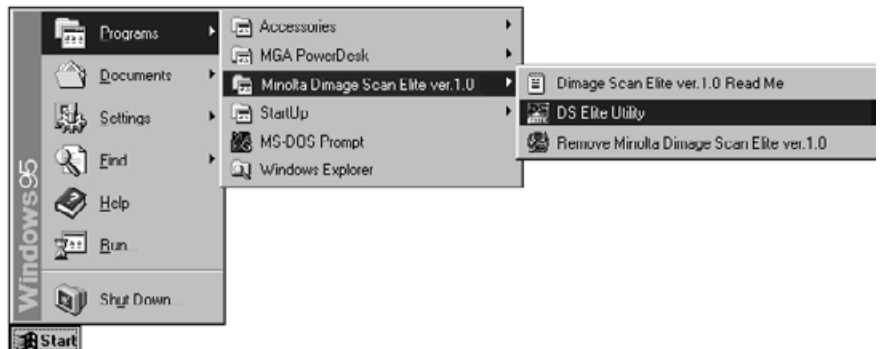
*The software is ready for use when the Main window appears (p.20).*

Use the utility software, as a stand alone application, when you just want to scan the photographic image and store.

### Launching the Utility Software

#### Windows

Select Start > Programs > Minolta Dimâge Scan Elite > DS Elite Utility

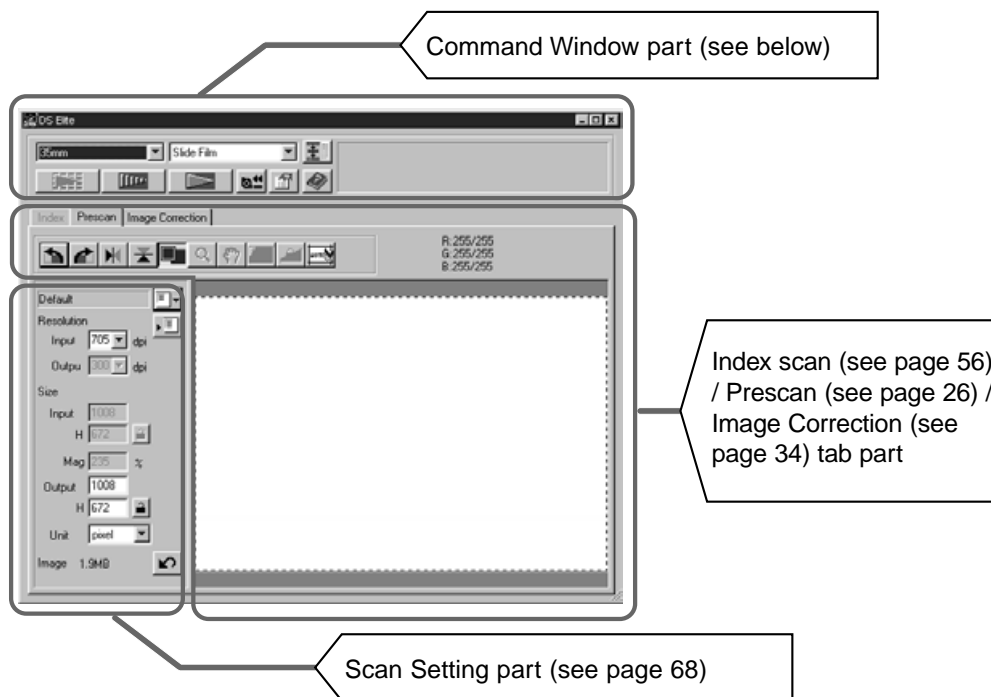


#### Macintosh

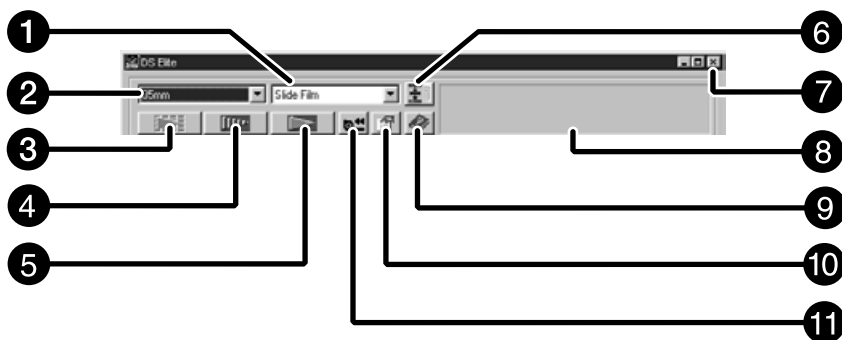
Double click on .

*The software is ready for use when the Main window appears (p.20).*

## MAIN window



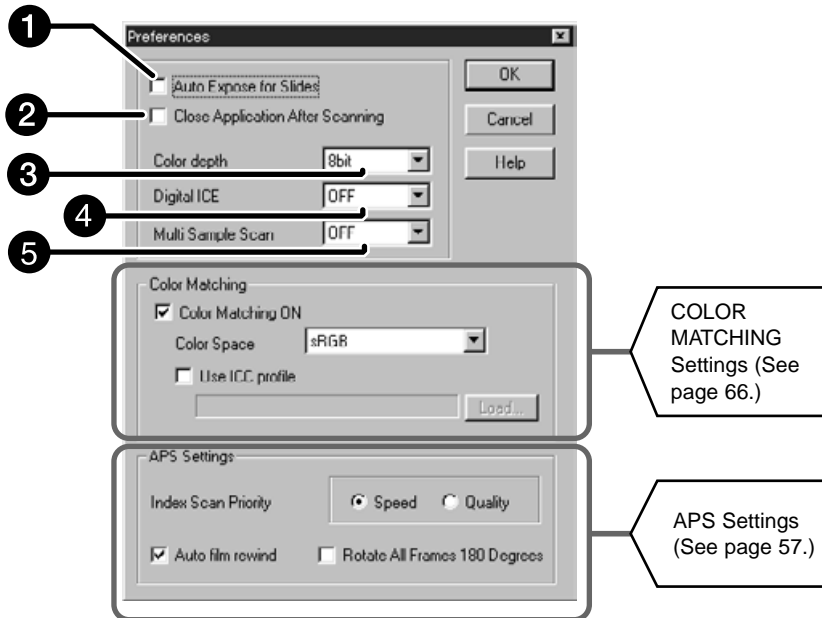
## The Command Window part — Name of parts



- |   |                      |    |                               |
|---|----------------------|----|-------------------------------|
| 1 | Film format list box | 7  | Close button                  |
| 2 | Film format list box | 8  | Status bar                    |
| 3 | Index Scan button    | 9  | Help button ( ? on Macintosh) |
| 4 | Prescan button       | 10 | Preferences button            |
| 5 | Scan button          | 11 | APS Rewind button             |
| 6 | Navigation button    |    |                               |

1. Click on .

## The Preference Dialog Box — Name of parts



2. Set the preferences as desired.

**1 Auto Expose for Slides checkbox**

Select this checkbox when scanning underexposed slides.

**2 Close Driver software After Scanning checkbox**

Closes the scanner's driver software after the scan is complete.

**3 Color depth Setting box**

The pixel depth of each color channel used to scan your image (RGB or CMY). Three options are available:

- 8-bit – over 16.7 million colors
- 16-bit – over 2.8 billion colors
- 16-bit linear – same as 16 bit, but image correction is not applied when the image is scanned.

**4 Digital ICE Setting box**

Select the DIGITAL ICE (removing dust or scratch) from OFF and ON. This function is not available for monochrome film.

**5 Multi-Sample Scanning Setting box**

This function reduces the random noise by referring the average of the result while scanning several times.

Select the times of scanning operation from OFF, 2 times, 4 times, 8 times and 16 times.

3. Click on  to accept the new preference settings.

- Changes to the Preference settings take effect immediately.

## LOADING THE FILM HOLDER

Using the included 35mm negative and slide holders, the Minolta Dimâge Scan Elite can scan mounted or unmounted...

- 35mm colour negatives
- 35mm colour slides
- 35mm black & white negatives
- 35mm black & white positives

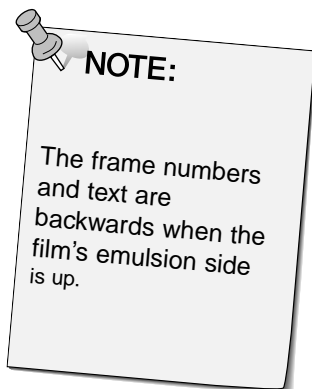
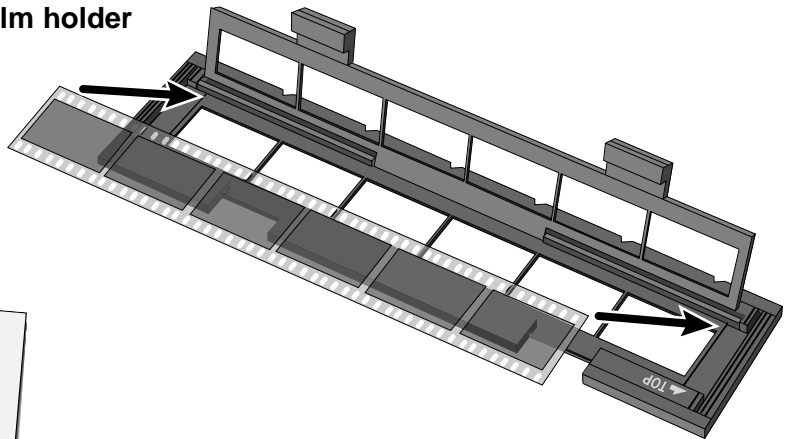
Advanced Photo System negatives and slides can also be scanned using the optional AD-10 APS Adapter. See page 57.

### Loading the Negative Holder

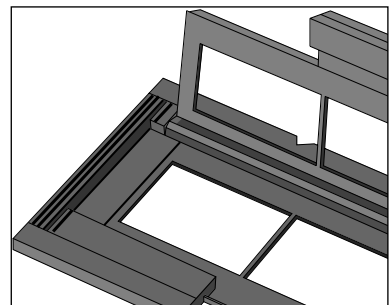
1. Open the film holder.

2. Place the film in the film holder emulsion side up.

- The film holder will accept film strips up to 6 frames long.
- Brush dust off the film before placing it into the film holder.



3. Align the frames within the scanning windows.



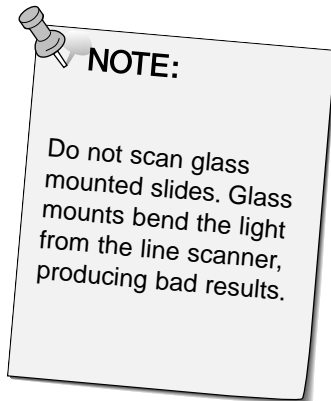
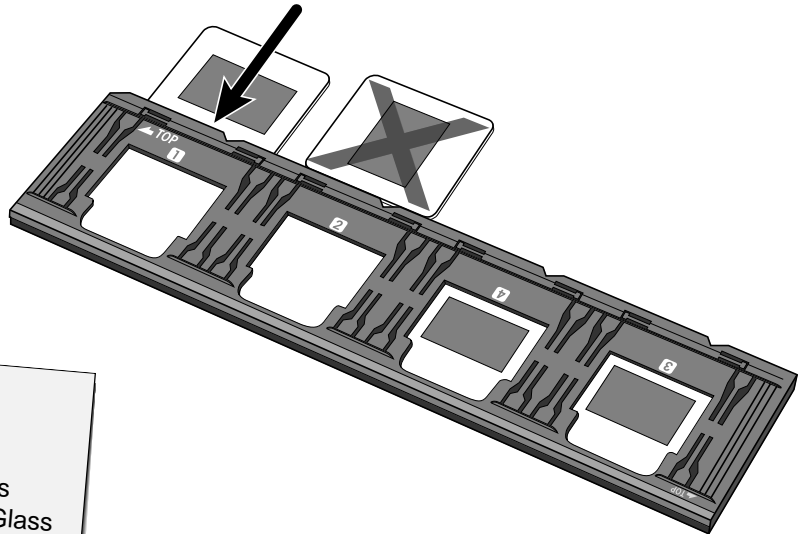
4. Snap the film holder closed.



## Loading the Slide Holder

### 1. Insert slides into the slide holder emulsion side up.

- Brush dust off the the slide before placing it into the film holder.
- Slide mounts must be thicker than 1 mm and thinner than 2 mm to fit into the slide holder.
- Orient the slides horizontally, not vertically.

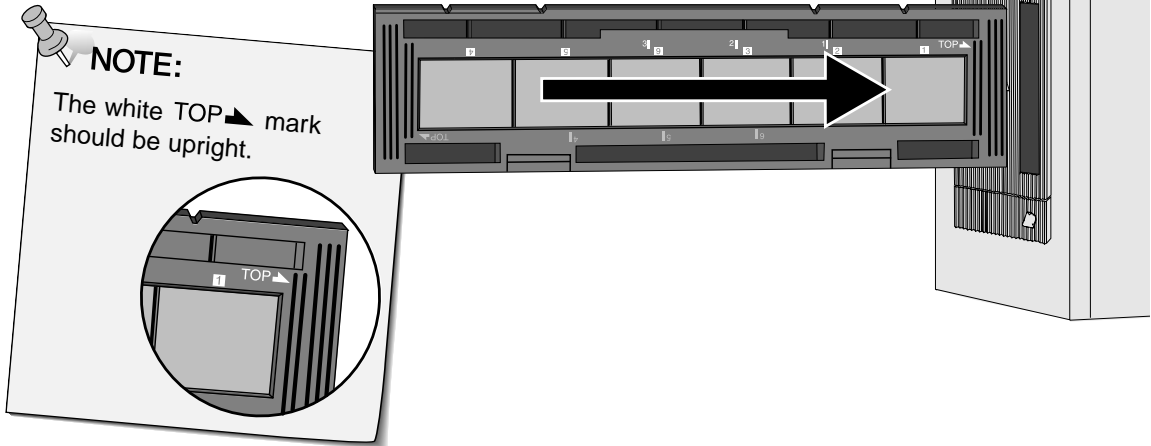


## INSERTING THE FILM HOLDER INTO THE SCANNER

The notches in the film and slide holders identify the position of the scanning windows. Push the holder all the way in to scan the last frame on that side of the film holder. Remove, flip, then re-insert the film holder to scan the frames on the other side of the holder.

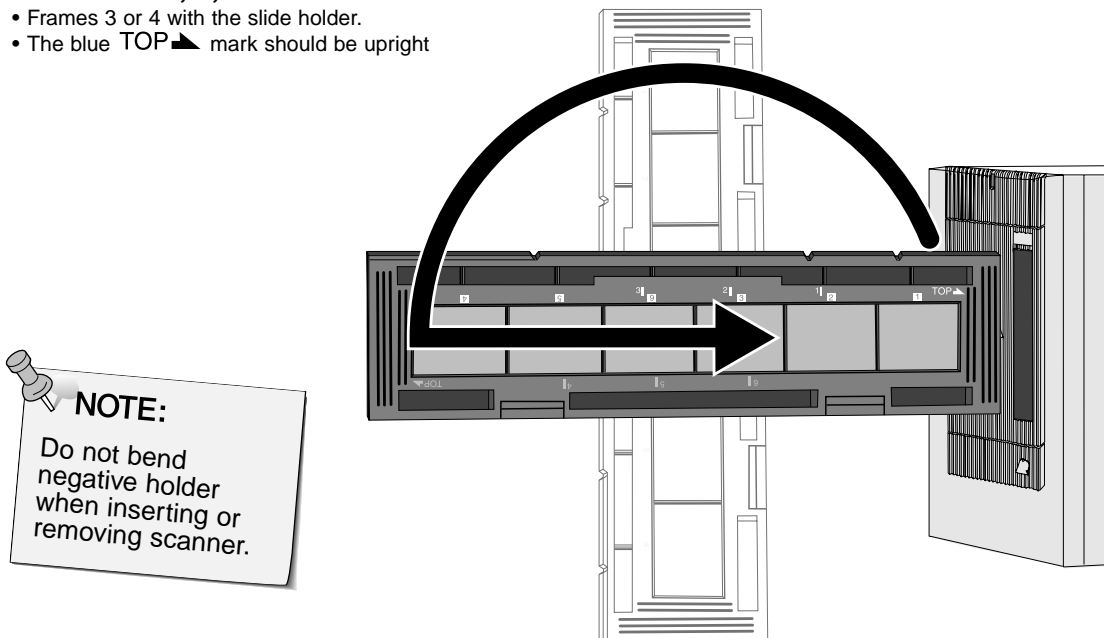
### Insert the negative holder into the scanner's film slot to scan frames 1, 2, or 3.

- Frames 1 or 2 with the slide holder.



### Remove, flip, then re-insert the negative holder to scan frames 4, 5, or 6.

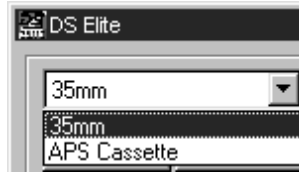
- Frames 3 or 4 with the slide holder.
- The blue TOP mark should be upright



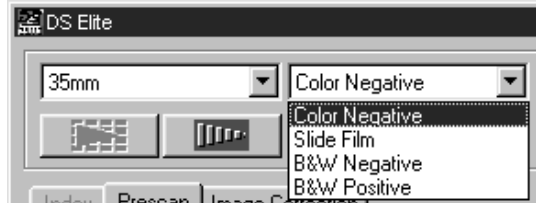
## Setting the Film Type

1. Select 35mm from the film format drop-down list.

- The Preview window appears.

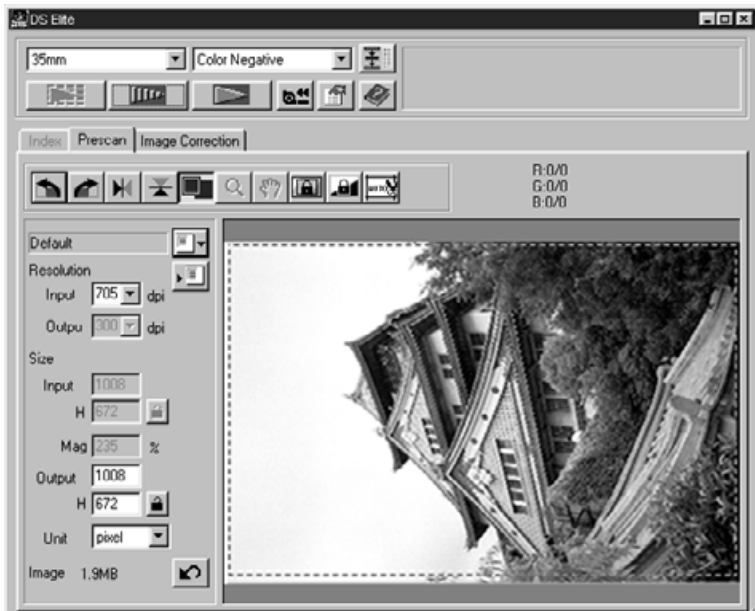


2. Select the film type from the film type drop-down list.



3. Click on  in the Main window.

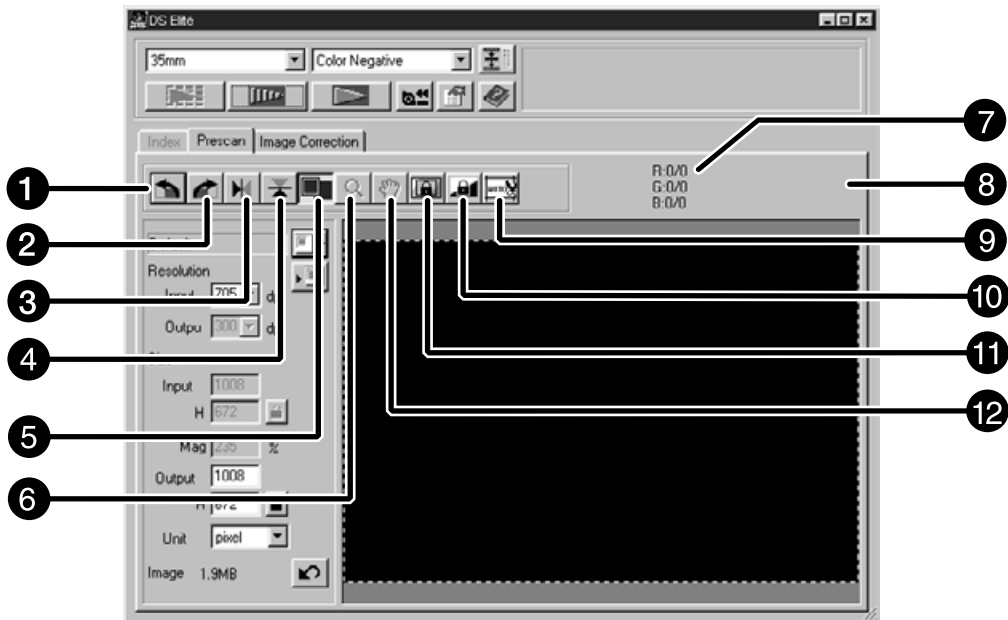
The previewed image will appear in the Preview window.



**NOTE:**  
Press Ctrl when previewing (⌘ on the Macintosh) to see CMY values in the RGB/CMY display.

Previewing creates a scan of the image that you can apply and view color, contrast, orientation, and brightness corrections before clicking on the Scan button. This ensures that the final scan will be the best it can be.

### The Preview window part — Name of parts



- |                           |  |
|---------------------------|--|
| 1 Rotate Left button      | 8 Frame number indicator                   |
| 2 Rotate Right button     | 9 Auto Holder/Mount Crop Adjustment button |
| 3 Flip Vertical button    | 10 AE Lock button                          |
| 4 Flip Horizontal button  | 11 AE Area Lock button                     |
| 5 Zoom button             | 12 Grab button                             |
| 6 Full-Screen View button |  |
| 7 RGB/CMY display         |  |


Especially useful when scanning bracketed exposures, AE (auto exposure) lock lets you scan multiple images with the same initial exposure settings. AE Lock saves the automatic exposure settings determined when an image is previewed. Subsequent images are previewed using the 'locked' exposure settings.

- AE-lock does not save exposure corrections made in the Variations, or Tone Curves/Histogram dialog boxes.

### Setting AE-Lock

After previewing the image...

1. Click on .

-  can not be selected until an image has been previewed.

2. Select another image, then click on .

- The scanner skips the setting exposure step in the preview sequence.

*Images will be scanned using the AE lock settings until AE lock is cancelled or the scanner is reinitialised.*

### Cancelling AE-Lock

1. Click on .

2. Click on  to preview the image again.

The area used by the auto exposure algorithm can be adjusted so that only the selected area is taken into account by AE.

Perform the procedure below after previewing the image.

1. Click on .



2. Press the Shift key.

- The AE area is indicated by a line instead of the cropping area which is indicated by a dashed line.

3. While pressing down the Shift key, change the AE area.

- The operation is the same as that of changing the cropping area except that the shift key should be kept pressed whilst clicking and dragging the cursor.
- For details, see "Cropping" (P.30).

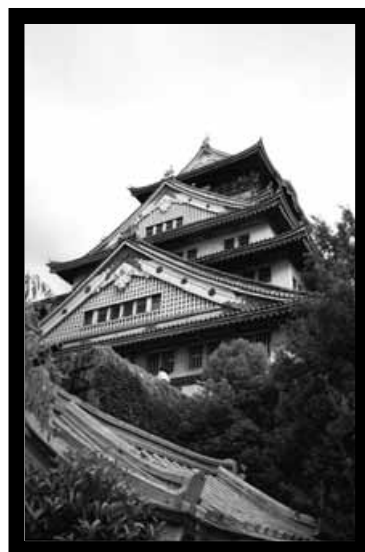
### Rotate

Click on the  and  buttons to correct the orientation of your image before scanning. Changes will be reflected in the preview image.



Click on  to rotate the image 90° clockwise.



Click on  to rotate the image 90° counter-clockwise.



### Flip

The  and  buttons let you flip the image left to right or top to bottom before scanning. Changes will be reflected in the preview image.

Click on  to flip the image top to bottom.



- The image is upside down compared to the original scan.

Click on  to flip the image left-to-right.



- Image is backwards compared to the original scan.



## Auto Cropping

The cropping area is determined automatically so that the holder or slide mount frame in the preview image is removed.

Click on .

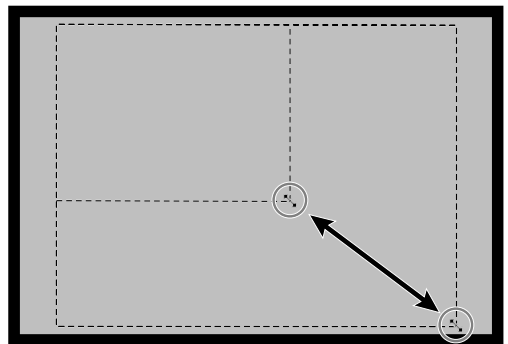
## Cropping

The cropping frame defines how much of the preview image will be scanned. The dimensions of the cropping frame are displayed in the lower left corner of the preview window.

### To enlarge or reduce the size of the cropping frame...

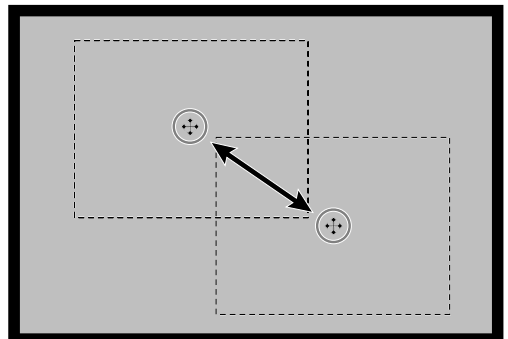
**Click on the cropping frame and drag the pointer in or out.**

- Click on the corners and drag to resize the cropping frame proportionally.
- Click on the sides and drag to resize the cropping frame non-proportionally.



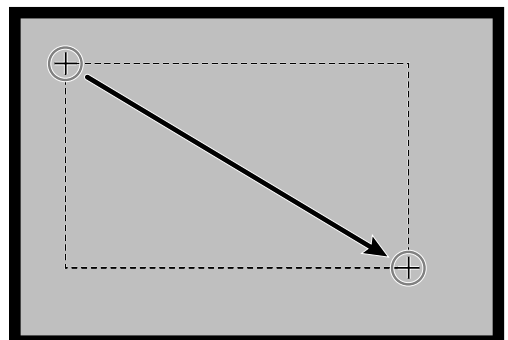
### To move the cropping frame...

**Click inside the cropping frame, then drag the cropping frame to its new location.**




### To define a new cropping frame...

**Click and drag outside the current cropping frame.**



### Magnifying or Reducing the View

Use the zoom button  to increase or reduce the image magnification.

#### Zooming In

**1. Click on  in the Preview window.**

- The pointer will change to .


**2. Click anywhere on the image to zoom in.**

- The clicked position will be the center of the magnified view.
- The + disappears from the magnifier icon when the maximum image magnification has been reached.



#### Zooming Out

**1. Press and hold the Ctrl key (option key on the Macintosh) to reduce the image magnification.**

- The pointer will change to .

**2. Click anywhere on the image to zoom out.**

- The – disappears from the magnifier icon when the minimum image magnification has been reached.




#### Full screen view

This function allows you to display full preview image in the preview window.


**1. Click the Full-screen view button in the Preview window.**

### Scroll

Use the grab button to scroll an enlarged image.

-  can only be selected when the image has been magnified beyond the limits of the Preview window.

**1. Click on  in the Preview image display area.**


- The pointer will change to .

**2. Click on and drag the image to the desired location.**



### APS formats; C, H and P (APS only)

When APS is selected in the Main Window, the CHP button allows you to quickly and easily define the cropping frame by the standard APS format; C, H and P.

**1. Click on  to display the APS cropping frames.**

- The cropping frames are displayed in sequence with each click of the CHP button.

### Displaying Frame number (APS only)

This function allows you to display the current frame number and the total number of frames of an APS film.

**1. To display the next frame, click on .**

**2. To display the previous frame, click on .**

### RGB/CMY information

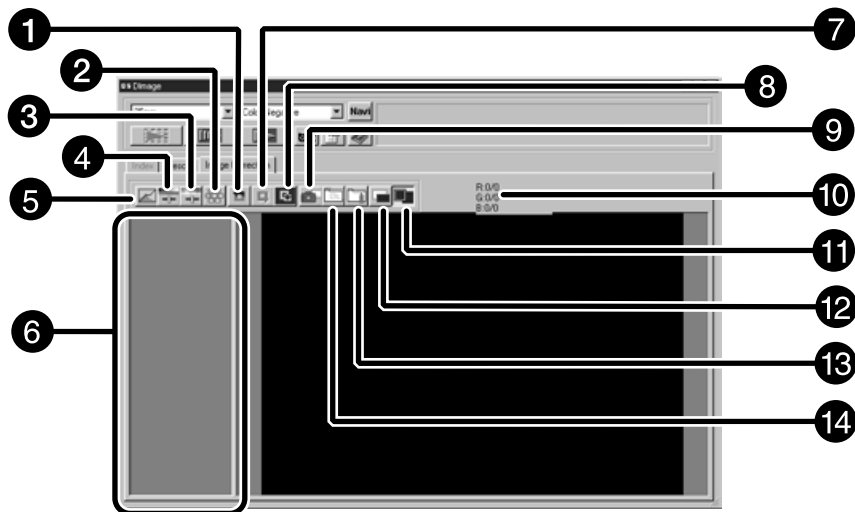
The RGB information from the pointer position is always displayed in the Preview window. The information is described in brightness levels from 0 to 255. However, the display can be changed to show CMY information.

**1. Press and hold the Shift key (command key on the Macintosh) with the Preview window open. The RGB information will change to CMY.**

This scanner gives you three options for correcting the brightness, contrast, and color balance of the final scan.

- Click on the Image Correction window in the Main window.

## The Image correction window part — Name of parts



- |   |  |
|---|--|
| 1 Undo button   | 8 Correction Reset button                        |
| 2 Variations button                                   | 9 Snapshot button                                |
| 3 Hue/Saturation/Lightness Correction button          | 10 RGB/CMY display                               |
| 4 Brightness/Contrast/Color Balance Correction button | 11 Image Correction Job Save button              |
| 5 Tone Curves/Histogram Correction button             | 12 Image Correction Job Load button              |
| 6 Snapshot Display Area                               | 13 Pre/Post Correction Comparison Display button |
| 7 Redo button   | 14 Full-Screen View button                       |

## IMAGE CORRECTION – TONE CURVES/HISTOGRAM

When the Tone curves/Histogram Correction button is clicked, the Tone Curves/Histogram Correction dialog box is displayed.

The Tone Curves dialog box allows you to change the tone curves and to directly correct the output value.

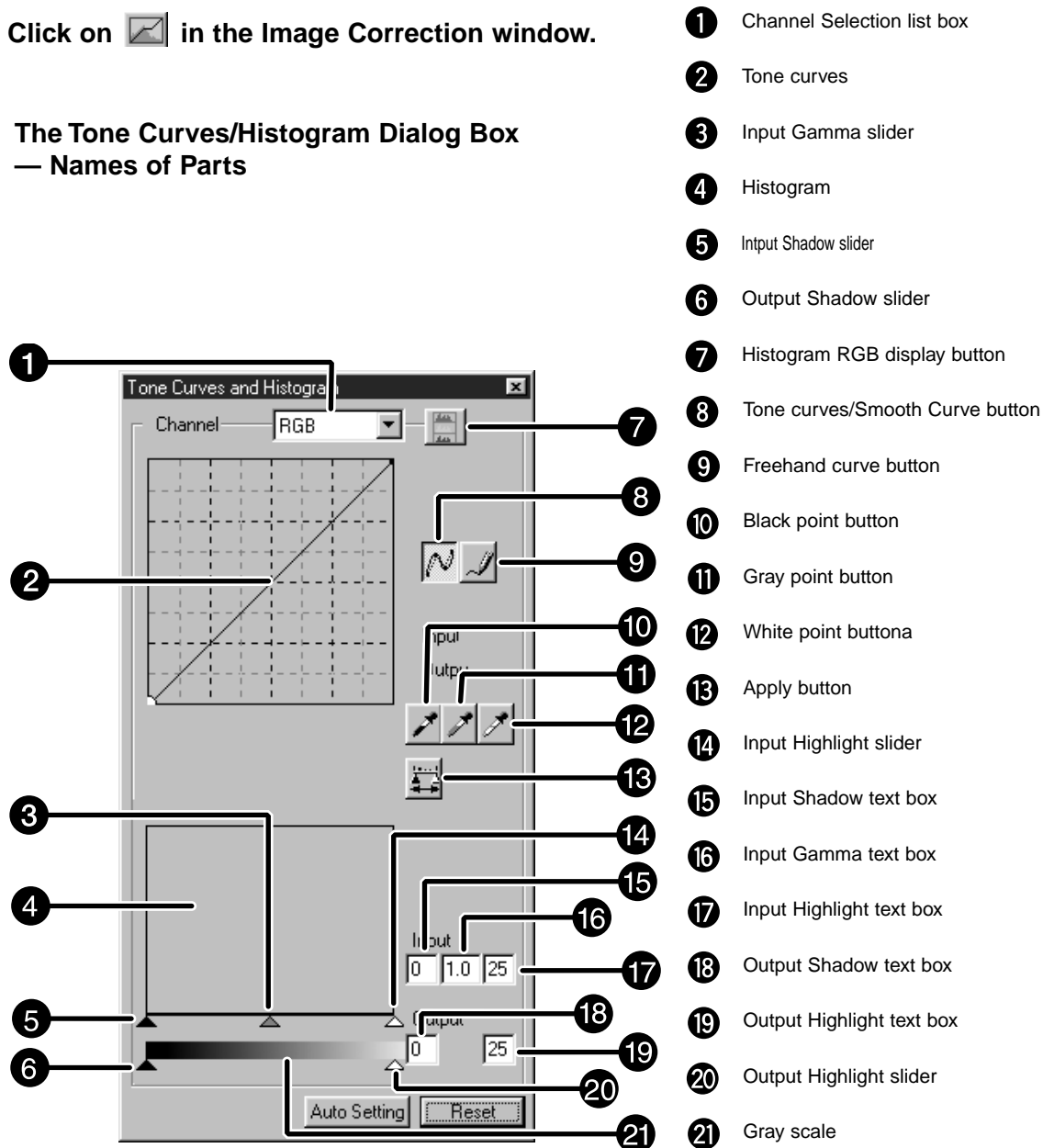
The Histogram dialog box allows you to specify the input and output area from the information included in the scanned film and to then correct the image. This dialog box displays also the histogram of the image area inside the cropping frame in each RGB color. The level is indicated in 256 color steps (0 to 255) from the left to right.

The tone curves and histogram are linked to each other so that when the tone curve is corrected, the histogram is automatically corrected.

### The Tone Curves and Histogram Dialog Box — Names of Parts

Click on  in the Image Correction window.

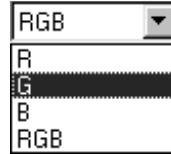
### The Tone Curves/Histogram Dialog Box — Names of Parts



## Correcting the Tone Curves

Changing the shape of a correction curve changes the output level for each corresponding input level. Changing the shape of the red, green, or blue curves affects color balance of the image. Changes to the RGB curve affect the image contrast and brightness.

1. **Click on the arrow next to the channel selection list to display the available channel (R, G, B, RGB).**



2. **Select the channel of the color to be corrected.**
3. **Click and drag the portion of the curve to be changed.**
  - The coordinate value of the cursor is displayed from 0 to 255.
  - The corrected image by changing the tone curves is applied to the preview image.
  - You can also change the tone curves by freehand.

## Changing Tone Curves by Freehand

This function allows you to draw tone curves by freehand.

1. **Select the channel of the color (R, G, B, RGB) to be corrected from the channel selection menu.**
2. **Click the Tone Curve Drawing button.**
  - The cursor changes to the pencil shape.
3. **Draw the desired curve by dragging.**
  - To smooth out the curve points, click the Smooth Curve button.
  - The change will be reflected in the preview image.

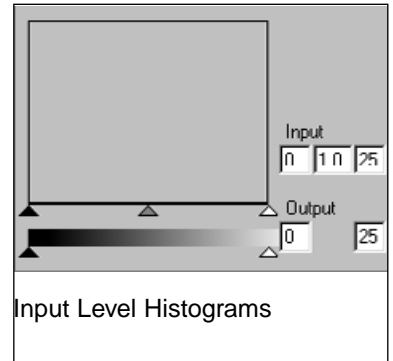
## Correcting the Histogram

The input slide bar has the Input shadow slider, Input gamma slider and Input Highlight slider. The output slide bar has the Output Highlight slider and Output shadow slider.

The image can be corrected by dragging the slider or inputting the value in the text box. The change will reflect the prescan image.

### 1. Drag the slider to move it to the desired level or input the value in the text box.

- The change will be reflected in the preview image.



## Displaying the Histogram of Each R, G, B color

### 1. Click the RGB Display button.

- When the RGB Display button is clicked again, the histogram of each R, G, B channel disappears.

## Setting the White or Black Points

This function allows you to correct the highlight or shadow point to the specified value.

- Changes are automatically applied to the preview image.

### Setting the White Point

#### 1. Double-click the White Point button.

- The Point Value dialog is displayed.

#### 2. Input the desired white point value.

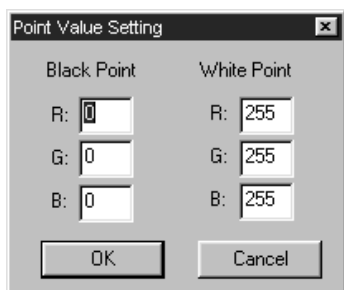
#### 3. Click the White Point button.

- The cursor changes to the white dropper shape.

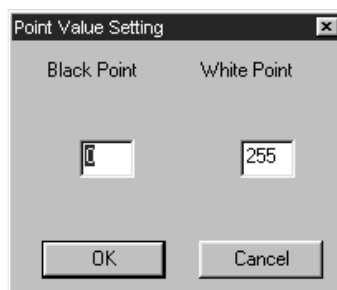
#### 4. Click the desired highlight point of the image.

- The image is corrected so that the point you clicked is the highlight point. The color of the highlight point is the white dropper value you input in step 2.
- The change will be reflected in the preview image.

Point Value Setting dialog box



When the film type is set to the color mode.



When the film type is set to the monochrome mode.

### Setting the Black Point

#### 1. Double-click the Black Point button.

- The Point Value dialog is displayed.

#### 2. Input the desired black point value.

#### 3. Click the Black Point button.

- The cursor changes to the black dropper shape.

#### 4. Click the desired shadow point of the image.

- The image is corrected so that the point you clicked is the shadow point. The color of the shadow point is the black point value you input in step 2.
- The change will be reflected in the preview image.





### Setting the Gray Point

This function can specify the gray of images.

#### 1. Click the Gray Point button.

- The cursor changes to the gray dropper shape.

#### 2. Click the point to be changed to gray in the image.

- The image is corrected so that the point you clicked is the gray point.
- The change will be reflected in the preview image.



### Viewing the Histogram of Images After Making Corrections

When the Apply button is clicked, the histogram of images after making corrections can be displayed.


The histogram after making corrections is displayed as long as you press this button. When the button is released, the histogram returns to the previous one.

### Auto setting

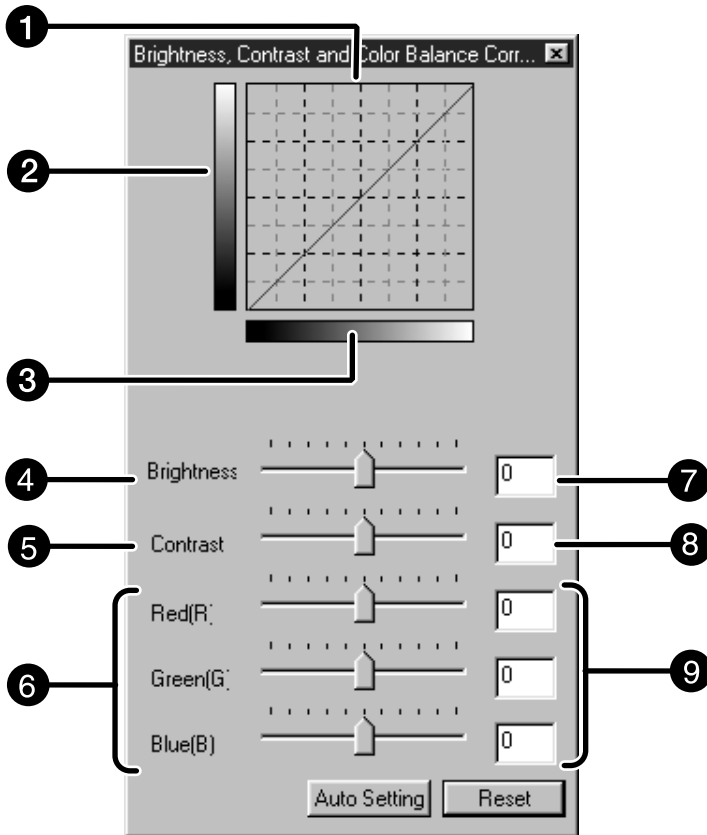
When the Auto setting button is clicked, the image is corrected automatically by removing no information parts from the histogram and using all tone steps from 0 to 255.

When the Brightness/Contrast/Color Balance Correction button is clicked, the Brightness/Contrast/Color Balance Correction window is displayed.

The images can be corrected by dragging the slider or inputting the desired value in the text box.

- Click on  in the Image Correction window.

## The Brightness, Contrast and Color Balance Correction Dialog box — Name of parts



- |                                     |                                 |
|-------------------------------------|---------------------------------|
| <b>1</b> Post-Correction LUT        | <b>6</b> Color Balance slider   |
| <b>2</b> Post-Correction Gray scale | <b>7</b> Brightness text box    |
| <b>3</b> Pre-Correction Gray scale  | <b>8</b> Contrast text box      |
| <b>4</b> Brightness slider          | <b>9</b> Color Balance text box |
| <b>5</b> Contrast slider            |                                 |

### 1. Drag each Brightness, Contrast or Color balance slider or input the desired value in the text box.

- The change will be reflected in the preview image.
- Moving the Brightness, Contrast or Color balance slider changes "Post-Correction Gray Scale" and "Post-Correction LUT".

### Post-Correction LUT

The color of the image is changed as shown in the Post-Correction LUT.


The correspondence between the color displayed on the Pre-Correction Gray Scale and Post-Correction Gray Scale appears on the Post-Correction LUT.

### Auto setting

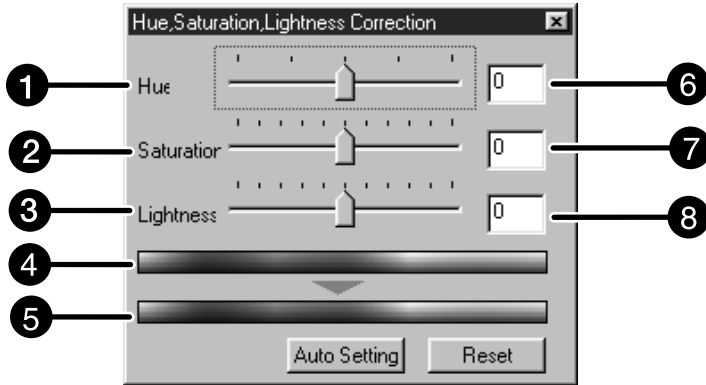
When the Auto setting button is clicked, the brightness and contrast of the image is corrected automatically according to the lightness without changing the color balance.

## IMAGE CORRECTION — HUE/SATURATION/LIGHTNESS

When the Hue/Saturation/Lightness Correction button is clicked, the Hue/Saturation/Lightness Correction window is displayed. The images can be corrected by dragging the slider or inputting the desired value in the text box.

- Click on  in the Image Correction window.

### The Hue, Saturation, Lightness Correction Dialog box — Name of parts



- |   |                              |   |                     |
|---|------------------------------|---|---------------------|
| 1 | Hue-level slider             | 6 | Hue-level text box  |
| 2 | Saturation slider            | 7 | Brightness text box |
| 3 | Lightness slider             | 8 | Saturation text box |
| 4 | Pre-Correction Color Sample  | 9 | Lightness text box  |
| 5 | Post-Correction Color Sample |   |                     |

### 1. Drag the each Hue, Saturation or Lightness slider or input the desired value in the text box.

- The change will be reflected in the preview image.
- To change the colour, move the Hue, Saturation or Lightness slider (or input the desired value in the text box).
- Moving the slider changes "Pre-Correction Color Sample" and "Post-Correction Color Sample".

### Pre-Correction Color Sample and Post-Correction Color Sample

The colour of the image is changed as shown in "Correction Color Sample". The colour displayed in "Pre-Correction Color Sample" is changed as shown in "Post-Correction Color Sample".

### **Auto setting**

When the Auto setting button is clicked, the saturation of the image is corrected automatically without changing the hue and lightness.

### **Reset**

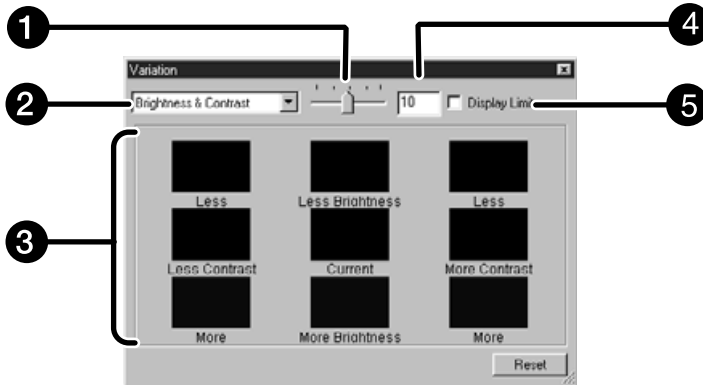
If you click the Reset button, the settings in the current correction window are reset.

The variation frames are displayed around the corrected preview image. You can correct the image while comparing with the variation images.

1. Click on  in the Image Correction window.

### The Variations Dialog Box — Names of Parts

---



- 1 Variation Amount Control slider
- 2 Correction list box
- 3 Pre/Post Correction Image Display Area
- 4 Variation Amount Control text box
- 5 Limit Indication check box

### Selecting the Correction Item

You can select from colour balance, brightness, contrast and saturation as the correction item to be used in the variation correction. However, colour balance and saturation are not available when using monochrome film.

1. Click on the arrow next to the correction item in the correction list box. The available correction items are displayed.

2. Click the correction item.

- The variation frames are corrected according to the selected correction item.

## Color Balance Correction

The 6 images that have been corrected by one-step in each RGBMY direction for the center image are displayed.

### 1. Click the colour balance.

- The corrected 6 frames of variation images are displayed.

### 2. Click the image in the direction you want to correct from the 6 frames of the variation images except for the center image.

- The image you clicked is placed in the centre and 6 new variation images that have been corrected by one-step in each direction are displayed.

### 3. Correct the image by repeating the operation in step 2.

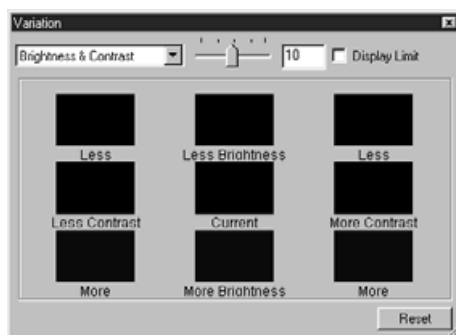
## Brightness & Contrast Correction

The 8 images of which brightness and contrast have been corrected by one-step in horizontal and vertical direction respectively for the center image are displayed.

The variation images on the left and lower sides of the center image show the – correction effect, and on the right and upper sides of the center image show the + correction effect.

### 1. Click the image in the direction you want to correct from the 8 frames of the variation images except for the center image.

- The image you clicked is placed in the centre and 8 new frames of the preview images that have been corrected in each direction are displayed.



### 2. Correct the image by repeating the operation in step 1.

## Saturation Correction

The 2 images of which saturation has been corrected on the right and left sides of the center image are displayed . The variation image on the left side shows lower effect, and on the right side shows higher effect.

### 1. Click the image in the direction you want to correct from the 2 frames of the images except for the image in center.

- The image you clicked is placed in the centre and 2 new frames of the variation images that have been corrected are displayed.



### 2. Correct the image by repeating the operation in step 1.

## Changing the Amount of Correction Step

The amount of correction step can be changed by moving the Variation Amount Control slider. The desired amount can be also input in the text box.



When the Snapshot button is clicked, the current preview image is stored in the Snapshot Display Area temporarily and displayed as a thumbnail.

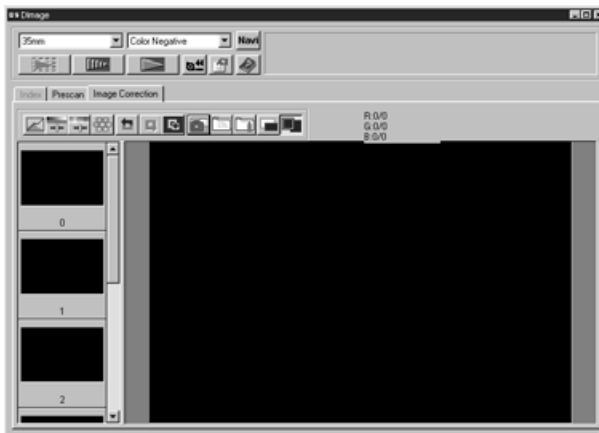
When the thumbnail in the Snapshot Display Area is double-clicked, that image is displayed in the preview window.

This allows a number of varying different corrections to be made and then compared without having to go back and retrace previous correction steps.

### Storing in the Snapshot Display Area temporarily

#### 1. Click on .

- The displayed preview image is displayed in the Snapshot Display Area as a temporary storing place.

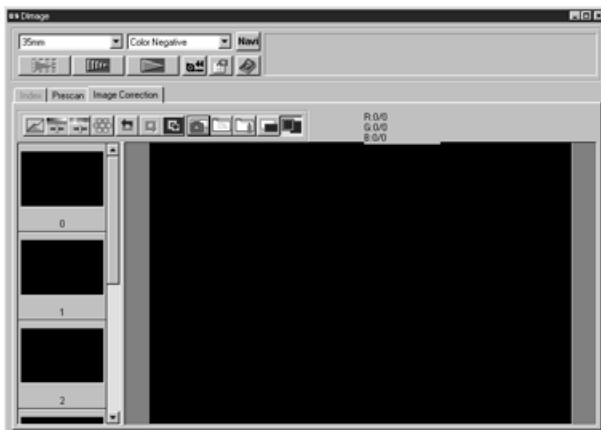


Snapshot Display Area 1

### Displaying the image stored temporarily as a preview image

#### 1. Click on the thumbnail in the Snapshot Display Area.

- The displayed preview image is deleted and the thumbnail image is displayed as a preview image.



Snapshot Display Area 2

## **Full-Screen View**

This function allows you to display full screen the view of the corrected image in the image correction window.

### **1. Click the Full-Screen View button.**

- When the Pre/Post Correction Image Comparing Display button is clicked, the size of the pre and post correction image is automatically changed according to the size of the main window.

## **Checking the Correction Result While Lining Up Images**

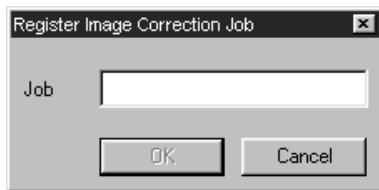
When the Pre/Post Correction Comparison Display button is clicked, the image correction windows are divided into right and left sides and pre-correction images are displayed in the left side, and post-correction images are displayed in the right side.

The image correction setting in each correction window can be saved as an image correction job. You can easily correct the image by loading the appropriate correction job.

### Saving Image Correction Job

#### 1. Click on the Image Correction Job Save button in the Image correction tab.

- The Register Image Correction job dialog box is displayed.



#### 2. Input the job name and click on the OK button.

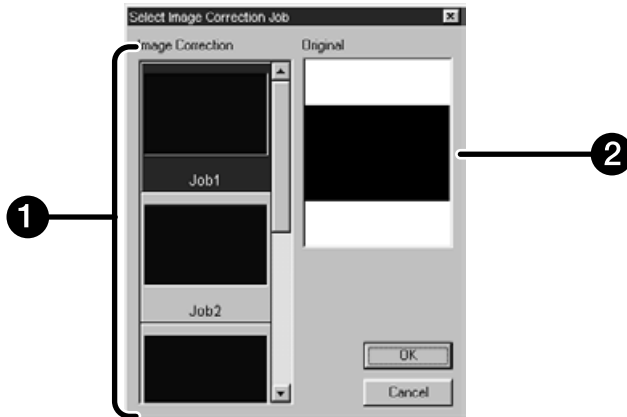
- The current image correction setting is saved as an image correction job.

## Loading Image Correction Job

This function allows you to load the saved correction job and apply an image correction to the displayed image.

### 1. Click on the Image Correction Job Load button in the correction window.

- The Image Correction Job List window is displayed.



- ① Image Correction job display area
- ② Original image display

### 2. Select the image correction job and click on the OK button.

## Canceling the Image Correction

When the Undo button is clicked, the current image correction is canceled and the image returns to the previous one.

## Redo the Correction

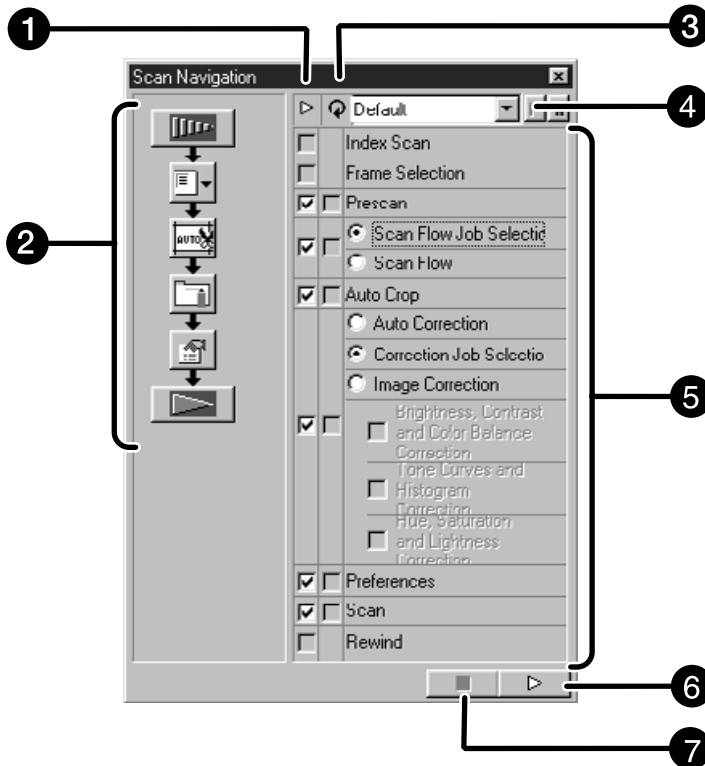
When the Redo button is clicked, the canceled image correction can be resumed.

## Delete the Image Correction

When the Undo Correction button is clicked, all image correction is deleted and the image returns to the initial state.

The Navigation window allows you to automat the procedure of scanning. When the Navigation button is clicked in the Main window, the navigation window is displayed.

## The Navigation Dialog box — Name of parts



- |   |                                   |
|---|-----------------------------------|
| <b>1</b> Operation Item checkbox              | <b>4</b> Navigation Menu list box |
| <b>2</b> Navigation Flow                      | <b>5</b> Operation Items          |
| <b>3</b> APS Repeated Operation Item checkbox | <b>6</b> Navigation Start button  |
|   | <b>7</b> Navigation Stop button   |

### Navigation Menu

This menu allows you to select the saved setting for automatic operation. Not only the saved settings but the “Save Setting” and “Delete Setting” items are displayed in this menu.

**1. Select the operation items in the Operation Item Checkbox or APS Repeated Operation Item checkbox.**

- The selected items are displayed with the buttons and arrows as a Navigation Flow.

**2. Click the Navigation Start button.**

- To stop, click the Navigation Stop button.

### Operation item checkbox

Insert the check mark in the operation items to be performed as the automatic operation.

When using a film format other than APS, the index scan, film frame selection and rewind cannot be selected.

**1. Insert the check mark in the operation items to be performed as the automatic operation.**

### APS repeated operation item checkbox

Insert the check mark in the items to be performed for all frames of the images every time you execute the automatic operation.

When using a film format other than APS, the APS Repeated Operation Item checkbox cannot be selected.

**1. Insert the check mark in the operation items to be performed for all frames of the images every time you execute the automatic operation.**

### Operation items

The operation items in the automatic operation are displayed.

**1. Select the details of the operation items with the radio button or checkbox.**

### **Saving, Selecting and Deleting a Navigation Setting**

This function allows you to save the navigation settings. The above settings can be saved, selected or deleted in the Navigation Menu list box.

#### **Saving a Navigation setting**

- 1. Click on the arrow next to the Navigation menu list to display the available menu.**
- 2. Select saving setting.**
  - The Navigation set saving dialog box is displayed.
- 3. Input the setting name and click the OK button.**

#### **Selecting a Navigation setting**

- 1. Click on the arrow next to the Navigation menu list to display the available menu.**
- 2. Select the setting to be used.**

#### **Deleting a Navigation setting**

- 1. Click on the arrow next to the Navigation menu list to display the available menu.**
- 2. Select the setting to be deleted.**
  - The Navigation set deleting dialog box is displayed.
- 3. Select the setting to be deleted and click the Delete button.**

Scan the film according to the Preview settings.

With the Dimâge Scan Elite utility software, you can save the final scan in one of the following file formats.

JPEG

TIFF

BMP (Windows only)

PICT (Macintosh operating system only)

The 48 bit (16 bit each RGB) image file can be saved in the tiff format only.

## Twain Driver Plug-in Software

With the Preview image displayed in the Preview window.

1. Click on  in the Main window.

- The final scan will begin.
- When scanning is complete, the final scan will appear in the host application.

2. Save the image using the instructions for your host application.

3. Close the Control Window to exit the Dimâge Scan Elite driver software.

- The driver window will close automatically after each scan if the Close Driver After Scanning option was selected in the Preferences dialog box (p. 21).

## Utility Software

With the Prescan image displayed in the Preview window.

1. Click on  in the Main window.

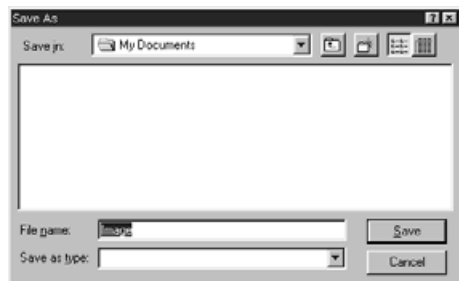
Your system's standard save dialog box will appear.

2. Enter the desired file name and select the file destination.

3. Select the file type from the drop-down list.

4. Click on .

- The final scan will begin.
- When scanning is complete, the scan will be saved in the selected location. The software will return to the Preview window.



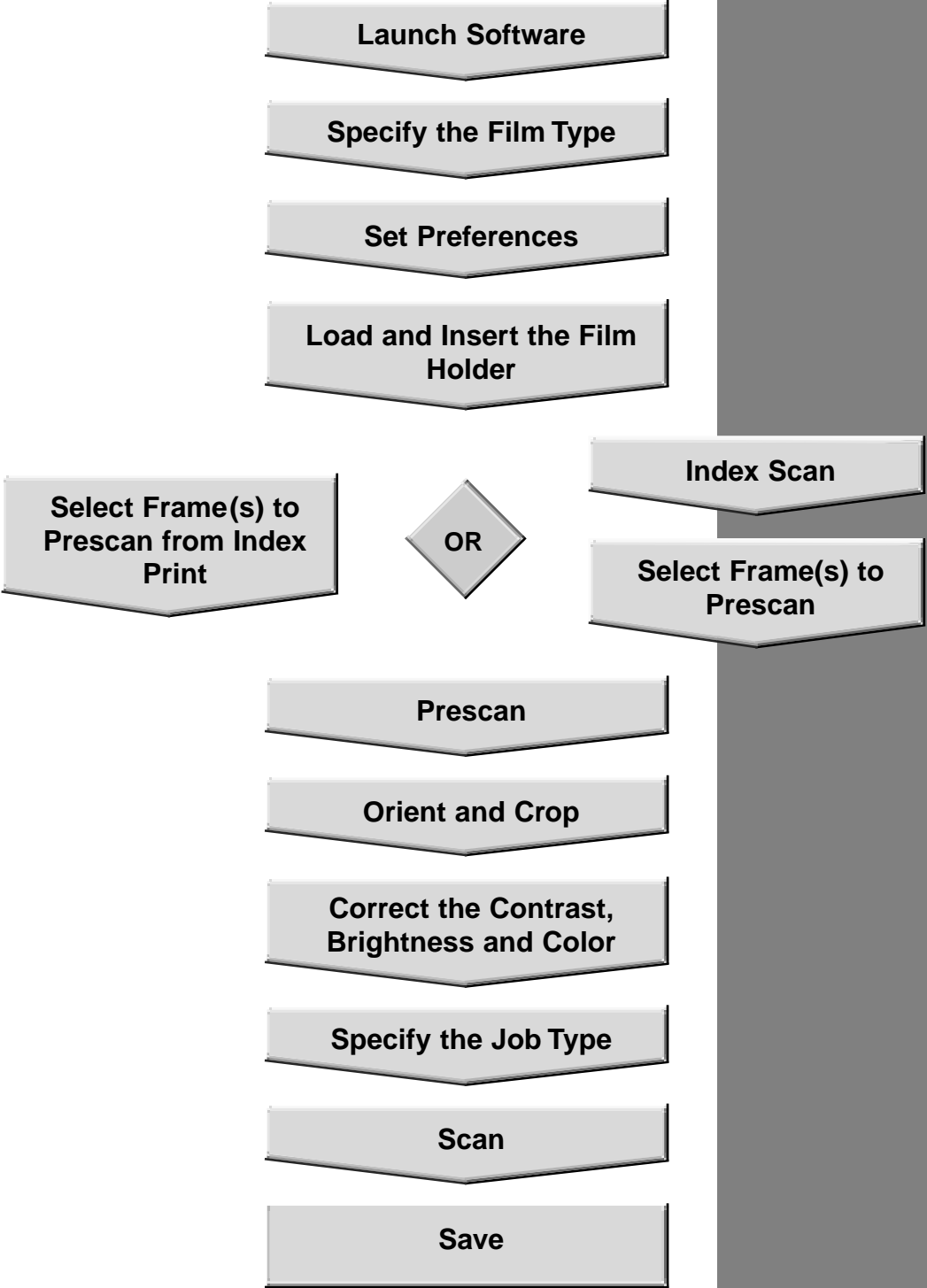
5. Close the Control Window to exit the Dimâge Scan Elite driver software.

- The driver window will close automatically after each scan if the Close Driver After Scanning option was selected in the Preferences dialog box (p. 21).

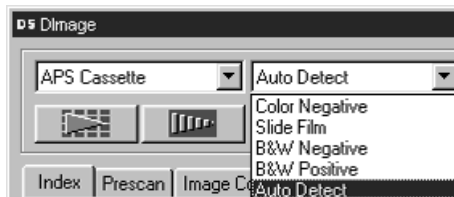


# SCANNING APS FILM

## SCAN FLOW

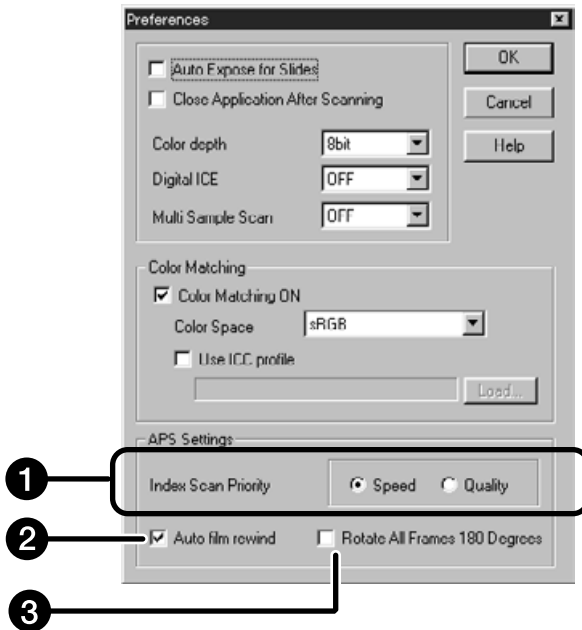


1. Launch the software (pp. 18-19).
2. Select APS Cassette from the film format drop-down list in the main window.
3. Select the film type from the film type drop-down list.



## 1. Click on in the Main window.

The preferences dialog is displayed.



## 2. Set the Preferences as desired in the APS settings part.

- De-select the Close Driver Software After Scanning check box when scanning multiple images at the same time.

### 1 Index Scan Priority

**Speed** – Creates a thumbnail representation of each frame on the roll.

**Quality** – Thumbnail and Preview images are created for each frame on the roll.

- Double-clicking on the index image opens the ready-made preview image.

### 2 Auto Film Rewind

Clicking on the eject button in the Command window automatically rewinds the film into the APS cassette before the APS adapter is ejected.

### 3 Rotate All Frames 180°

Rotates all frames in the index window 180°.

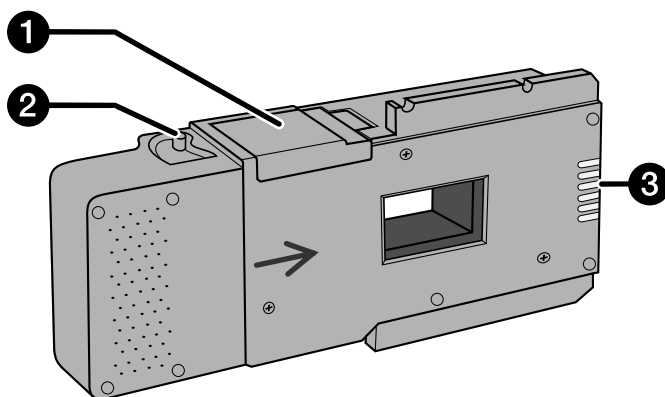
## APS ADAPTER (OPTIONAL)

The AD-10 APS Adapter is an optional accessory. The Dimâge Scan Elite can not scan Advanced Photo System film (IX-240 type) without the AD-10 APS Adapter.

### Names of Parts

- ❶ Film-chamber door
- ❷ Film-chamber release
- ❸ Scanner contacts\*

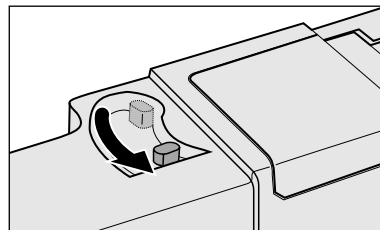
\* Do not touch



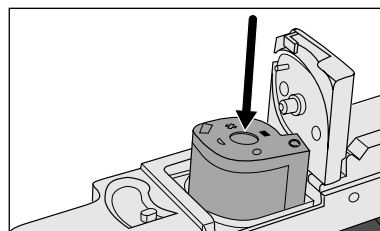
### Loading the APS Adapter

#### 1. Slide the film-chamber release as shown.


- The film-chamber door will open.



#### 2. Insert the film cassette into the film chamber with the VEI (Visual Exposure Indicator) on top.

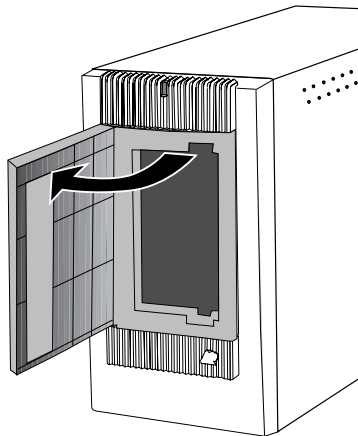


#### 3. Close the film-chamber door.

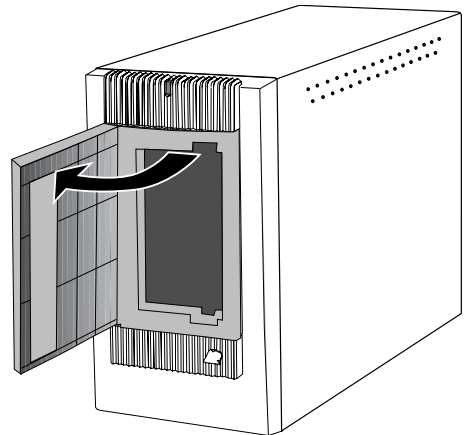
- The film-chamber door will not close if the  mark is not highlighted. Forcing the door shut could damage the cassette.

### Inserting the APS Adapter

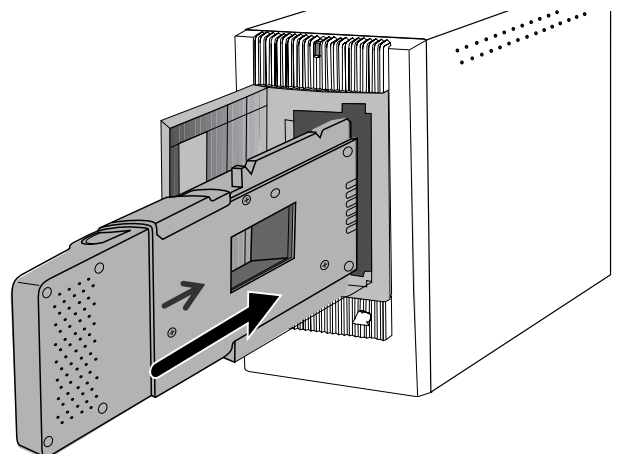
1. Press the door where shown to unlock,



...then open the scanner's film door.



2. Insert the APS Adapter into the scanner.

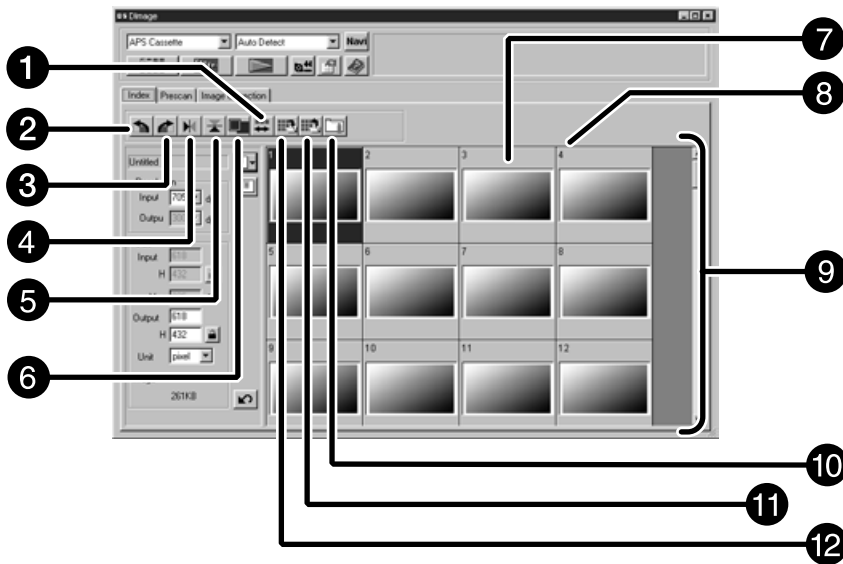


Index scan displays a scan of each image on the cassette in the index scan window. The time required for an index scan depends on the performance of your machine.

If you don't want to index scan the entire roll, select the frame number of the image you want to scan from the index print provided by your photofinisher. Click on the appropriate image box in the index window to select an image for prescanning or scanning.

- There are two options for making an index scan, Speed or Quality. Select the desired option in the Preference dialog box (p. 57).

## Index Window – Names of Parts



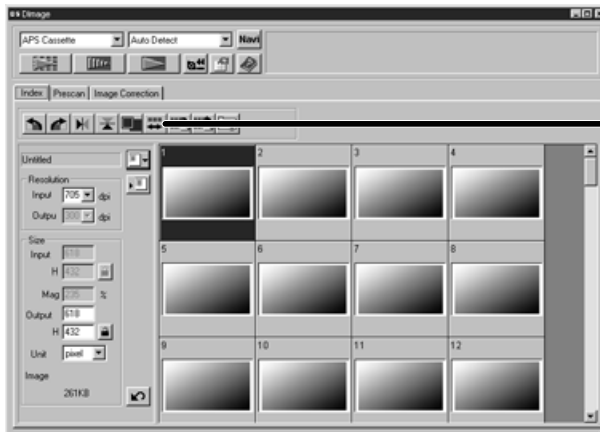
- 1 Reverse frame order button
- 2 Rotate left button
- 3 Rotate right button
- 4 Flip Horizontal button
- 5 Flip Vertical button
- 6 Full-Screen View button
- 7 Index image

- 8 Frame number
- 9 Index Image frame
- 10 Image Correction Job Load button
- 11 Index Load button
- 12 Save Index Scan button

## Index scan


Click on  in the Main window.

- All frames on the cassette will be scanned and appear in the Index window.



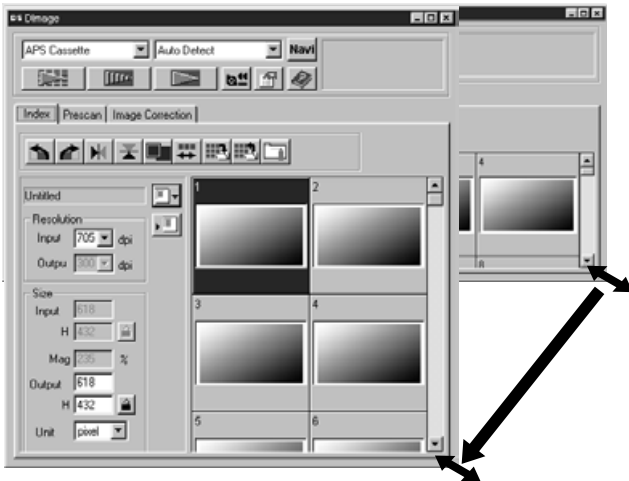
Click on  to reverse the display order.

### NOTE:

- To cancel the index scan, press the escape key ( - Command and period for the Macintosh) until the Cancelling Index Scan message box appears.
- The completed index scans will appear in the index window.
- Frames that have not been index scanned can still be selected for prescanning and scanning.

## Index scan

Change the size of the Index scan window as desired. The position of the frames will change accordingly.

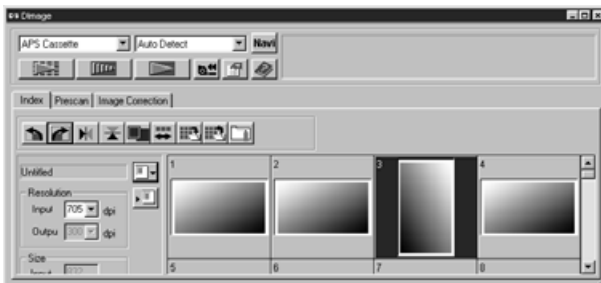


**Click on the corner tab and drag to reach the desired size.**

- When the Full-Screen View button is not clicked, the size and shape of the index frames does not change.
- When the Full-Screen View button is clicked, the size of the index frames changes automatically and all frames are displayed.

## Rotating the Index Frames

Rotate index frames so they appear in the index scan window with the proper orientation.

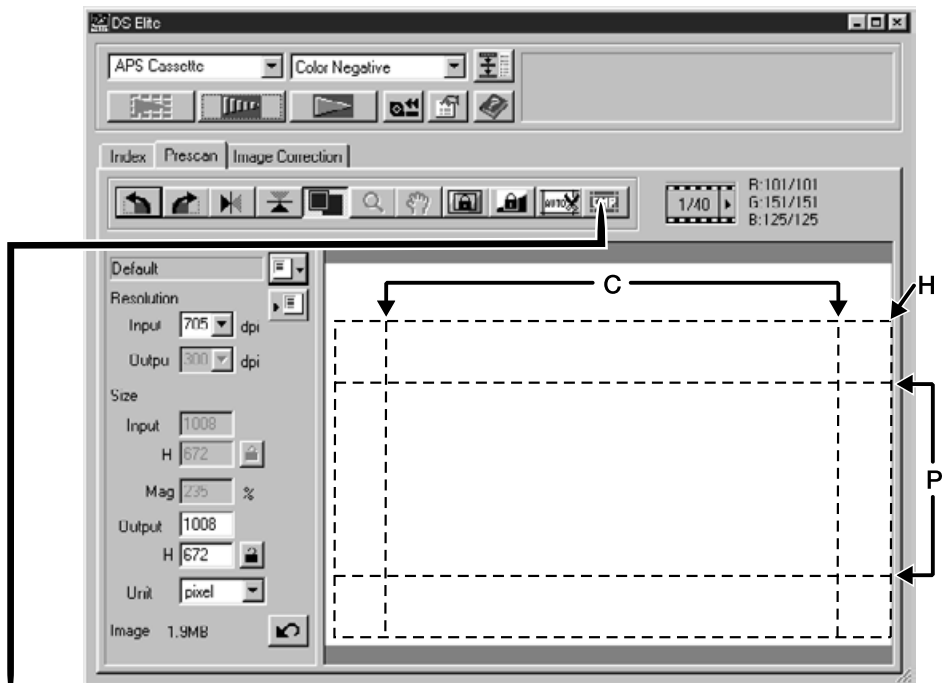


**Select the desired frames, then click on ,  or , .**

- The selected frames will rotate in 90° increments either clockwise or counter-clockwise or flip vertically or horizontally.
- Rotating the index frame will not affect the Preview or Scan.



1. Click on an image or an image box, then click on . The image will be prescanned, then opened in the Preview window.



Click here to specify an APS format (C, H, or P) cropping frame.

2. Orient and crop the image as desired (pp. 29-33).
3. Apply contrast, brightness, and colour corrections (pp. 34-46).
4. Select the desired job type (pp.71-72).
  - Only one job type can be selected when multiple images are scanned at the same time.
5. Close the Preview window to return to the Index window.
  - Adjustments made in the Preview window are held until the image is scanned or the driver software is closed.

## Selecting Frames

### 1. Click on an image to select it for scanning.

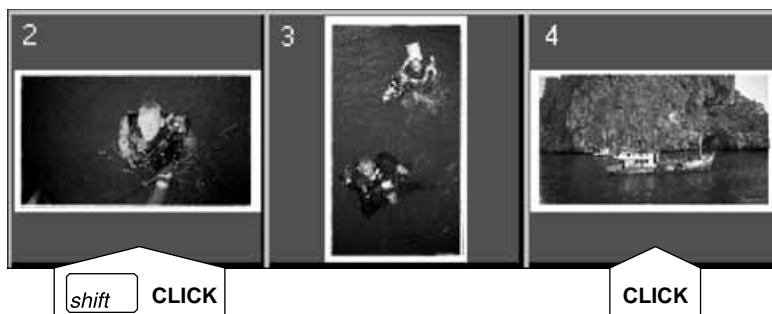
- Selected images are surrounded by a dark gray frame.



- Press the control key (⌘) key for the Macintosh while clicking to select additional frames for scanning.
- Press the control key (⌘) key for the Macintosh while clicking to deselect an image.

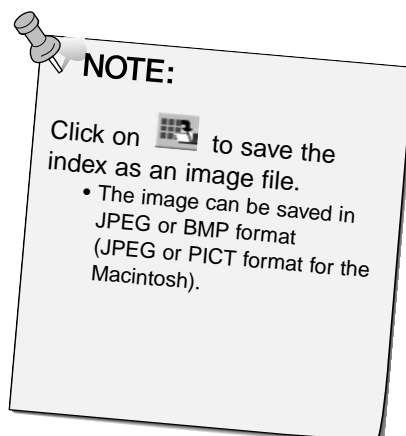


- Press the shift key while clicking to select all the frames between the current frame and the last frame selected.



### 2. Click on to scan the selected image(s).


- The scan is cancelled if more than the number of frames selected is greater than the Max # of Frames set in the Preferences dialog box. See Preferences - APS Settings on page 57.
- The image will be opened in your photo application software when the scanner's driver software is closed.
- Some photo applications can only acquire one image at a time.



### 3. Refer to page 54 to save the scanned image(s).

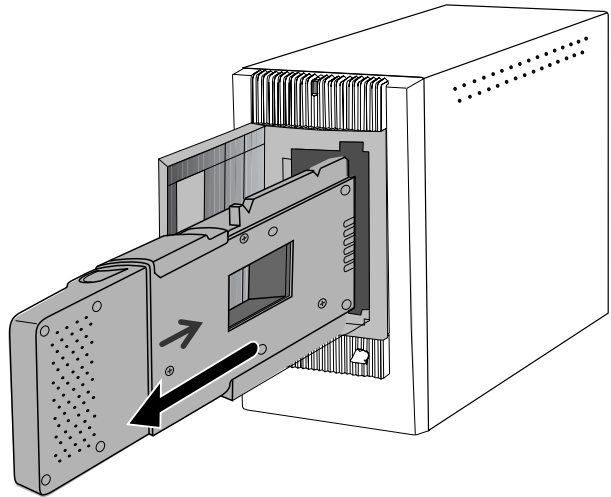
- Multiple scans will be saved using the selected file name and numbered chronologically. Example: File\_Name01, File\_Name02, File\_Name03...

## REMOVING THE APS ADAPTER

**1. Click on  to rewind the film into the cassette.**

- This step is not necessary when the auto rewind option is selected in the Preference dialog box window (p. 49).

**2. Remove the APS adapter from the scanner and close the film door.**



**3. Close the Control Window to exit the Dimâge Scan Elite driver software.**

- The driver window will close automatically after each scan if the Close Application After Scanning option was selected in the Preferences dialog box (p.21).

**4. Open the APS adapter's film chamber door and remove the cassette.**

**NOTE:**

Multiple images can be scanned before closing the software.

- Some photo applications can only acquire one image at a time.

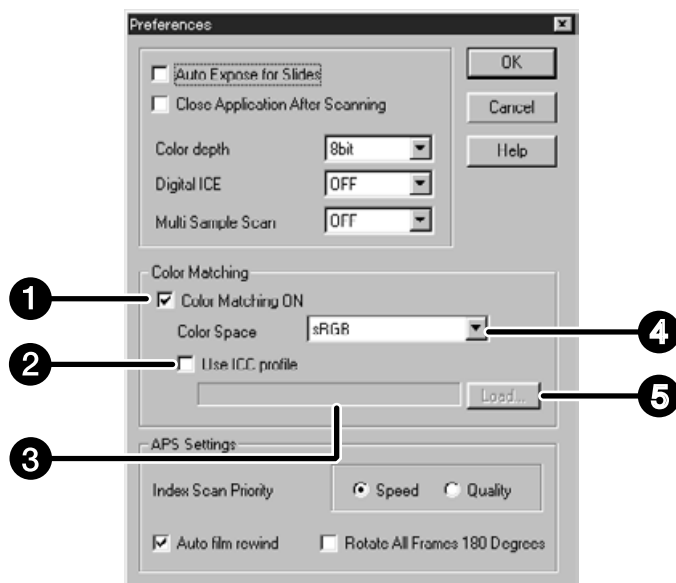


# APPENDIX

This function allows you to match the scanner data to the monitor type (colour space). The output colour space and ICC profile can be specified by using the colour matching function. To match the scanner data to the colour space, specify the output colour space. To correct the color reproduction character of the monitor and to reduce the difference of color between monitors in different environments in addition to the color space setting, specify the monitor ICC profile settings in both the driver software and a software such as Photoshop. For details, refer to page 69.

1. Click on  in the Main window.

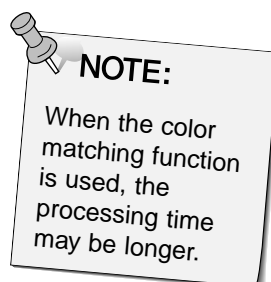
### The Color Matching in the Preference Dialog Box — Name of parts



- 1 Color Matching ON checkbox
- 2 ICC profile setting checkbox
- 3 ICC profile text box
- 4 Output Color Space list box
- 5 ICC profile Load button

### 2. Set the preferences as desired.

- De-select the Close Driver After Scanning check box when scanning multiple images at the same time.



### Output colour space setting

1. Insert the check mark in the “Color Matching ON” box.
2. Click the ▼ (menu) button in the output colour space list box, the available output colour space settings are displayed.
3. Click the desired output colour space setting.

### ICC profile setting

1. Insert the check mark in the “use ICC profile” box.
2. Click the Load button.
  - The standard file open dialog of your operating system is displayed.
3. Select the ICC profile according to the monitor being used.

The application may perform the original matching process. If you want to change the setting, refer to the following sample settings.  
When the colour matching function is used, the colour matching function of the OS, video card, etc. are disabled.

When using Photoshop Ver.3.0.5 or Ver. 4.0.1

Output colour space: Apple RGB  
ICC profile\*<sup>1)</sup>: select (for Windows)  
This is not used (for Macintosh)

When using an application of which the monitor colour matching function is set to ON

Output colour space\*<sup>2)</sup>: option  
ICC profile\*<sup>1)</sup>: select

When using an application of which the monitor colour matching function is set to OFF, or when using an application which does not have the monitor colour matching function.

Output colour space: do not specify  
ICC profile\*<sup>1)</sup>: select

When an image is scanned with this setting, the data is matched according to the monitor being used.

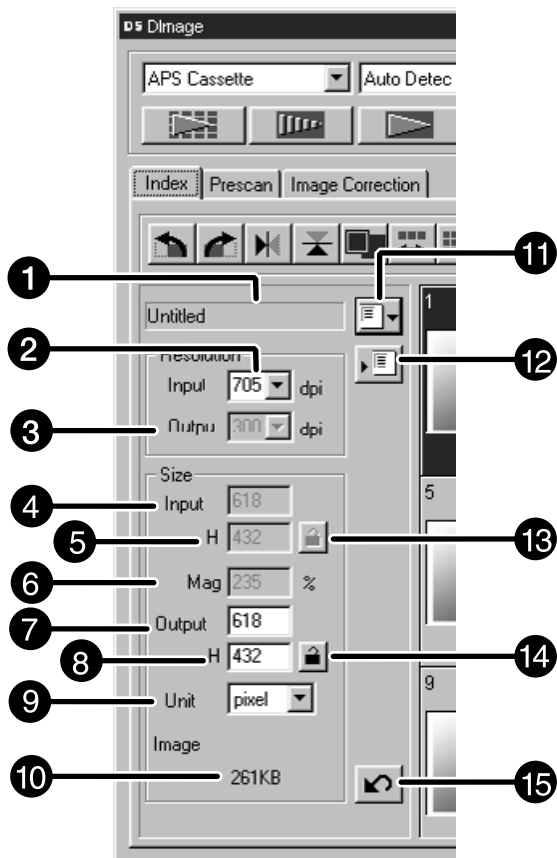
\*<sup>1)</sup> ICC profile specifies the ICC profile of the monitor.

\*<sup>2)</sup> The same color space as specified in the application is specified.

The scan settings determine your final image's resolution, dimensions, and file size, as well as helping determine the image quality. You can select a Job (p. 71) to have the scan settings selected for you or you can directly enter them into the Main window (Index window or Preview window).

## The Scan Settings part in the Main Window — Names of parts

Except the Image Correction window in the Main window.



- |   |                            |    |                         |
|---|----------------------------|----|-------------------------|
| 1 | Job Name list box          | 9  | Units list box          |
| 2 | Input Resolution list box  | 10 | Image size display      |
| 3 | Output Resolution list box | 11 | Job Load button         |
| 4 | Input Size text box (W)    | 12 | Job Registry button     |
| 5 | Input Size text box (H)    | 13 | Input Size lock button  |
| 6 | Magnification text box     | 14 | Output Size lock button |
| 7 | Output Size text box (W)   | 15 | Reset button            |
| 8 | Output Size text box (H)   |    |                         |



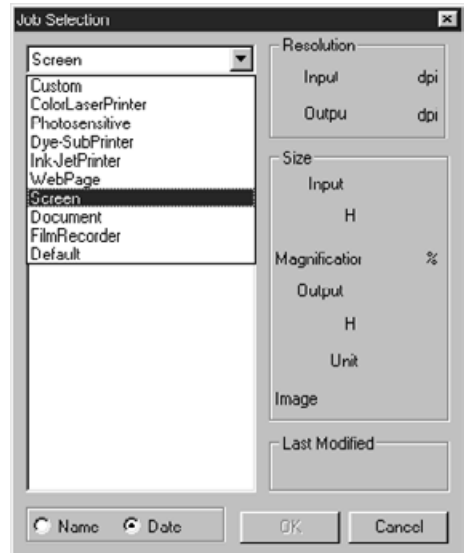
## SCAN SETTINGS

Image resolution is the number of pixels per inch (ppi or dpi) that represent your scanned image. The size of an image file is determined by its size (dimensions) and resolution. The rule to follow when scanning is "bigger is better". To obtain the best results, set the output resolution to the highest value your final output device (printer, monitor, etc.) can handle. The driver software automatically determines the input resolution necessary to obtain the desired output size and resolution.

1. Click on  in the Index window.

The Job Selection dialog box will appear.

2. Select the appropriate category from the drop-down list.



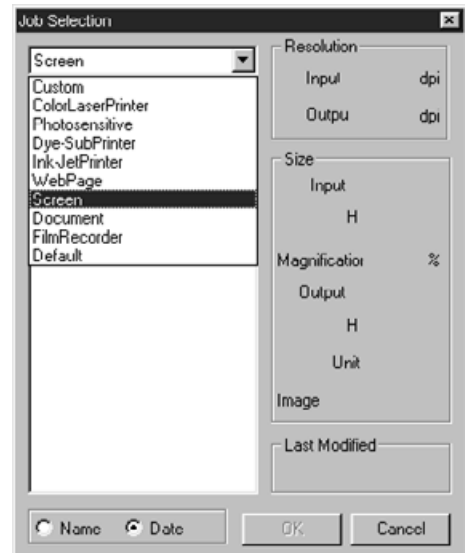
3. Click on the job file name to select it, then click on .

- The settings are applied to the active Preview window.

**NOTE:**

Job names can be listed chronologically or alphabetically. Select the format by clicking on the Name or Date option button.

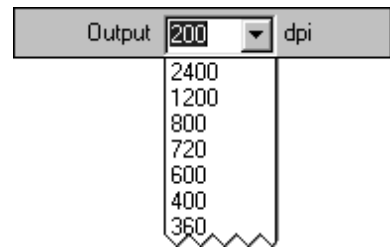
- The cropping frame changes accordingly, but can be proportionally resized.



*Continued on the following page.*

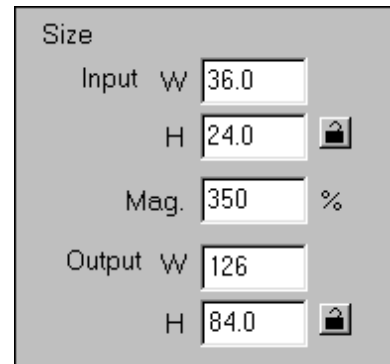
## 4. Enter the desired output resolution from the output resolution drop-down list.

- Values can also be entered into the output resolution list box directly.
- The output resolution cannot be changed when the unit list box is set to pixels.



## 5. The dimensions of the cropping frame are displayed in the input size text boxes.

- Values can be entered directly or by resizing the cropping frame.
- The values will change if a different unit of measure is selected.
- The scanning area size can't be changed if the Input Size is locked.

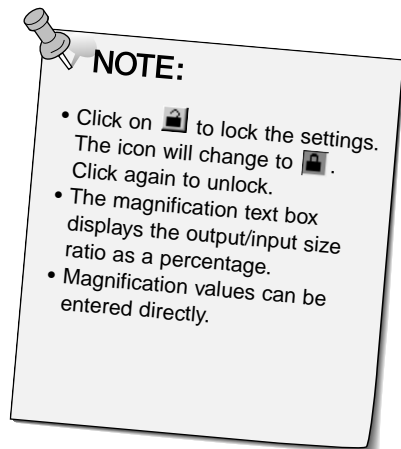


## 6. Enter the desired output size (maximum 3 digits).

- The output size is limited by the maximum resolution of the scanner.
- The values will change if a different unit of measure is selected.
- The output size cannot be changed when the unit list box is set to pixels.
- The scanning area size can be changed proportionally (within the resolution limits) when the Output Size is locked.

## 7. The input scan resolution text box is set to the lowest input (scan) resolution necessary to achieve the desired output size and resolution.

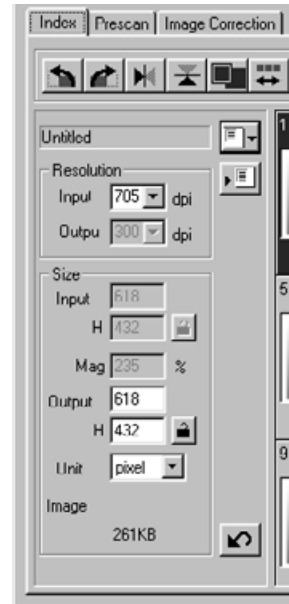
- Input scan resolutions can also be selected from the drop down list or entered directly.



## Creating a Job

In addition to the Job settings included with the software, it is possible to create and save your own Job settings.

1. Set the desired settings in the Main window (Index window or Preview window).



2. Click on .

The Job Registry dialog box will appear

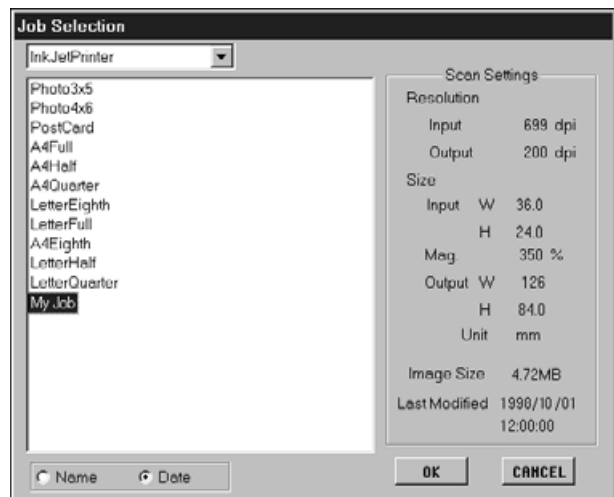
3. Name the job by entering a title and select the desired category, then click on .



## Deleting a Job

It is possible to delete the Job you created when it is no longer needed.

Click on the name of the job in the Main window scan settings part, then press the delete key on your keyboard.



Before making the final scan, the scanner needs to know how big the final image will be and the quality of output that will be used (printer, monitor, etc.) so it knows what resolution to scan the film. Using the Job function is a quick and easy way to enter the scan settings.

Scan Job Category	Description
<b>Custom</b>	User created scan settings (p. 71).
<b>Color Laser Printer</b>	Digital colour copiers and colour laser printers Uses output resolution of 400 or 600 dpi. There are two paper-size options; letter and A4.
<b>Photosensitive</b>	Printers that use photosensitive/photographic material Can use output resolutions of 400 dpi, 360 dpi, 267 dpi, and 180 dpi. There are ten paper size options.
<b>Dye-Sub Printer</b>	Dye-sublimation printers Uses an output resolution of 300 dpi. There are 4 paper size options.
<b>Ink Jet Printer</b>	Uses an output resolution of 200 dpi. There are 4 paper size options.
<b>Web Page</b>	For use on home pages Image size is listed in pixels and will vary. Standard Photo CD sizes are also available.
<b>Screen</b>	For monitor display Image size is listed in pixels and will be the VGA standard of 640 x 480 pixels or larger.
<b>Document</b>	For insertion into documents Uses an output resolution of 72 dpi. Image size depends on the paper size selected.
<b>Film Recorder</b>	For high input resolution images that will be output to a film recorder.
<b>Default</b>	This category uses the default settings for the film format. The scan settings appear in the Job Selection window.

# SCAN JOB FILE LIST – 35MM

For your reference, the following is a listing of the scan job categories and names for the 35mm and APS film formats.

Category	Job name	Resolution		Mag.	Unit	Input Size		Input Lock	Output Size		Output Lock
		In	Out			W	H		W	H	
<b>Default</b>	Default	705	300	235	pixel	1008	672	OFF	1008	672	OFF
<b>Color Laser Printer</b>	Max Size_600dpi	2820	600	470	mm	36.3	24.2	OFF	170.00	113.00	ON
	A4Quarter_600dpi	2447	600	407	mm	36.3	24.2	OFF	148.00	98.70	ON
	A4Eighth_600dpi	1735	600	289	mm	36.3	24.2	OFF	105.00	70.00	ON
	Letter Quarter_600dpi	2291	600	381	inch	1.43	0.95	OFF	5.46	3.64	ON
	Letter Eighth_600dpi	1702	600	283	inch	1.43	0.95	OFF	4.05	2.70	ON
	Max Size_400dpi	2820	400	705	mm	36.3	24.2	OFF	256.00	170.00	ON
	A4Half_400dpi	2313	400	578	mm	36.3	24.2	OFF	210.00	140.00	ON
	A4Quarter_400dpi	1629	400	407	mm	36.3	24.2	OFF	147.00	98.00	ON
	A4Eighth_400dpi	1156	400	289	mm	36.3	24.2	OFF	105.00	69.90	ON
	Letter Half_400dpi	2291	400	572	inch	1.42	0.95	OFF	8.19	5.46	ON
	Letter Quarter_400dpi	1526	400	381	inch	1.43	0.95	OFF	5.45	3.63	ON
	Letter Eighth_400dpi	1133	400	283	inch	1.43	0.95	OFF	4.05	2.70	ON
<b>Photosensitive</b>	Max Size	2820	400	705	mm	36.3	24.2	OFF	256.00	170.00	ON
	A5_400dpi	2313	400	578	mm	36.3	24.2	OFF	210.00	140.00	ON
	8x10_400dpi	2798	400	699	inch	1.43	0.95	OFF	10.00	6.66	ON
	5x7_400dpi	1961	400	490	inch	1.43	0.95	OFF	7.01	4.67	ON
	PostCard4 6_400dpi	1678	400	419	inch	1.43	0.95	OFF	6.00	4.00	ON
	Letter_267dpi	2039	267	763	inch	1.43	0.95	OFF	10.90	7.27	ON
	A4_267dpi	2187	267	819	mm	36.3	24.2	OFF	297.00	198.00	ON
	A5_267dpi	1545	267	578	mm	36.3	24.2	OFF	210.00	140.00	ON
	8x10_267dpi	1870	267	700	inch	1.43	0.95	OFF	10.00	6.67	ON
	5x7_267dpi	1307	267	489	inch	1.43	0.95	OFF	7.00	4.66	ON
	PostCard4 6_267dpi	1120	267	419	inch	1.43	0.95	OFF	6.00	4.00	ON
	(unavailable)	1597	360	443	mm	36.3	24.2	OFF	161.00	107.00	ON
	2L_360dpi	1727	360	479	mm	36.3	24.2	OFF	174.00	116.00	ON
	14x17_180dpi	2123	180	1179	mm	36.3	24.2	OFF	428.00	285.00	ON
	11x14_180dpi	1747	180	970	mm	36.3	24.2	OFF	352.00	235.00	ON
	10x12_180dpi	1494	180	830	mm	36.3	24.2	OFF	301.00	200.00	ON
	(unavailable)	797	180	442	mm	36.3	24.2	OFF	160.00	106.00	ON
	2L_180dpi	857	180	476	mm	36.3	24.2	OFF	173.00	115.00	ON
<b>Dye-Sub Printer</b>	A4Full	2455	300	818	mm	36.3	24.2	OFF	297.00	198.00	ON
	A4Half	1735	300	578	mm	36.3	24.2	OFF	210.00	140.00	ON
	A4Quarter	1223	300	407	mm	36.3	24.2	OFF	148.00	98.70	ON
	A4Eighth	866	300	289	mm	36.3	24.2	OFF	104.00	69.90	ON
	Letter Full	2291	300	763	inch	1.43	0.95	OFF	10.90	7.28	ON
	Letter Half	1714	300	571	inch	1.43	0.95	OFF	8.17	5.44	ON
	Letter Quarter	1144	300	381	inch	1.43	0.95	OFF	5.45	3.63	ON
	Letter Eighth	850	300	283	inch	1.43	0.95	OFF	4.05	2.70	ON
	(unavailable)	1223	300	407	mm	36.3	24.2	OFF	148.00	98.70	ON
	Photo4x6	1240	300	413	mm	36.3	24.2	OFF	150.00	100.00	ON
	Photo3x5 /Photo9x13	1049	300	349	mm	36.3	24.2	OFF	127.00	84.60	ON
<b>Ink-Jet Printer</b>	A4Full	163	200	818	mm	36.3	24.2	OFF	297.00	198.00	ON
	A4Half	1156	200	578	mm	36.3	24.2	OFF	210.00	139.00	ON
	A4Quarter	814	200	407	mm	36.3	24.2	OFF	148.00	98.50	ON
	A4Eighth	577	200	288	mm	36.4	24.3	OFF	105.00	69.80	ON
	Letter Full	1526	200	763	inch	1.42	0.95	OFF	10.90	7.27	ON
	Letter Half	1144	200	572	inch	1.42	0.95	OFF	8.17	5.45	ON
	Letter Quarter	763	200	381	inch	1.43	0.95	OFF	5.45	3.63	ON
	Letter Eighth	566	200	283	inch	1.43	0.95	OFF	4.05	2.70	ON
	(unavailable)	814	200	407	mm	36.3	24.2	OFF	148.00	98.50	ON
	Photo4x6	826	200	413	mm	36.3	24.2	OFF	150.00	100.00	ON
	Photo3x5 /Photo9x13	699	200	349	mm	36.3	24.0	OFF	127.00	84.50	ON

Continued on the following page.

# SCAN JOB FILE LIST – 35MM

Category	Job Name	Resolution		Mag.	Unit	Input Size		Input Lock	Output Size		Output Lock
		In	Out			W	H		W	H	
<b>Web Page</b>	1023 x 682	716	300	238	pixel	1023	682	OFF	1023	682	ON
	960 x 640	671	300	223	pixel	960	640	OFF	960	640	ON
	870 x 580	608	300	202	pixel	870	580	OFF	870	580	ON
	768 x 512	537	300	179	pixel	768	512	OFF	768	512	ON
	624 x 416	436	300	145	pixel	624	416	OFF	624	416	ON
	600 x 400	419	300	139	pixel	600	400	OFF	600	400	ON
	480 x 320	335	300	111	pixel	480	320	OFF	480	320	ON
	Photo CD 2048 x 3072	2148	300	716	pixel	3072	2048	OFF	3072	2048	ON
	Photo CD 1024 x 1536	1074	300	358	pixel	1536	1024	OFF	1536	1024	ON
	Photo CD512 x 768	537	300	179	pixel	768	512	OFF	768	512	ON
Photo CD256 x 348	243	300	81	pixel	348	232	OFF	348	232	ON	
<b>Screen</b>	1280 x 1024	895	300	298	pixel	1280	853	OFF	1280	853	ON
	1280 x 960	895	300	298	pixel	1280	853	OFF	1280	853	ON
	1152 x 870	805	300	268	pixel	1152	768	OFF	1152	768	ON
	1024 x 768	716	300	238	pixel	1024	682	OFF	1024	682	ON
	832 x 624	582	300	194	pixel	832	554	OFF	832	554	ON
	800 x 600	559	300	186	pixel	800	533	OFF	800	533	ON
	640 x 480	47	300	149	pixel	640	426	OFF	640	426	ON
<b>Document</b>	A4 Half	416	72	577	mm	36.3	24.2	OFF	210.00	139.00	ON
	A4 Quarter	293	72	406	mm	36.4	24.1	OFF	148.00	98.40	ON
	A4 Eighth	207	72	287	mm	36.4	24.3	OFF	105.00	70.00	ON
	Letter Half	411	72	570	inch	1.43	0.95	OFF	8.16	5.44	ON
	Letter Quarter	274	72	379	inch	1.43	0.95	OFF	5.44	3.62	ON
	Letter Eighth	203	72	281	inch	1.44	0.96	OFF	4.04	2.69	ON
<b>Film Recorder</b>	35mm Full-Frame	2382	2400	99	mm	36.30	24.20	OFF	36.00	24.00	ON
	35mm Half-Frame	1586	2400	66	mm	36.30	24.20	OFF	24.00	16.00	ON
	35mm Quarter-Frame	1189	2400	49	mm	36.7	24.40	OFF	18.00	11.90	ON

# SCAN JOB FILE LIST – APS

Category	Job name	Resolution		Mag.	Unit	Input Size		Input Lock	Output Size		Output Lock
		In	Out			W	H		W	H	
<b>Default</b>	Default	705	300	235	pixel	832	480	OFF	832	480	OFF
<b>Color Laser Printer</b>	Max Size_600dpi	2820	600	470	mm	29.9	17.2	OFF	140.00	81.20	ON
	A4 Eighth_600dpi	2104	600	350	mm	30.0	17.3	OFF	105.00	60.60	ON
	Letter Eighth_600dpi	2161	600	360	inch	1.18	0.68	OFF	4.25	2.45	ON
	Max Size_400dpi	2820	400	705	mm	29.9	17.2	OFF	211.00	121.00	ON
	A4 Half_400dpi	2809	400	702	mm	29.9	17.2	OFF	210.00	121.00	ON
	A4 Quarter_400dpi	1977	400	494	mm	30.0	17.3	OFF	148.00	85.40	ON
	A4 Eighth_400dpi	1401	400	350	mm	30.0	17.3	OFF	105.00	60.60	ON
	Letter Quarter_400dpi	1851	400	462	inch	1.18	0.68	OFF	5.46	3.15	ON
	Letter Eighth_400dpi	1440	400	360	inch	1.18	0.68	OFF	4.25	2.45	ON
<b>Photosensitive</b>	Max Size	2820	400	705	mm	29.9	17.2	OFF	211.00	121.00	ON
	A5_400dpi	2809	400	702	mm	29.9	17.2	OFF	210.00	121.00	ON
	5x7_400dpi	2374	400	593	inch	1.18	0.68	OFF	7.00	4.04	ON
	Post Card 4 x 6_400dpi	2039	400	509	inch	1.18	0.68	OFF	6.01	3.47	ON
	Letter_267dpi	2472	267	925	inch	1.18	0.68	OFF	10.90	6.30	ON
	A4_267dpi	2654	267	994	mm	29.9	17.2	OFF	297.00	171.00	ON
	A5_267dpi	1870	267	700	mm	30.0	17.2	OFF	210.00	121.00	ON
	8x10_267dpi	2263	267	847	inch	1.18	0.68	OFF	10.00	5.76	ON
	5x7_267dpi	1586	267	594	inch	1.17	0.68	OFF	7.00	4.04	ON
	PostCard4 x 6_267dpi	1359	267	508	inch	1.18	0.68	OFF	6.00	3.46	ON
	(unavailable)	1935	360	537	mm	30.0	17.3	OFF	161.00	92.90	ON
	2L_360dpi	2092	360	581	mm	29.9	17.2	OFF	174.00	100.00	ON
	14x17_180dpi	2578	180	1432	mm	29.9	17.2	OFF	429.00	247.00	ON
	11x14_180dpi	2117	180	1176	mm	29.9	17.2	OFF	352.00	203.00	ON
	10x12_180dpi	1809	180	1005	mm	29.9	17.2	OFF	301.00	173.00	ON
	(unavailable)	966	180	536	mm	30.0	17.2	OFF	160.00	92.70	ON
	2L_180dpi	1046	180	581	mm	29.9	17.2	OFF	174.00	100.00	ON
<b>Dye-Sub Printer</b>	Max Size	2820	300	940	mm	29.9	17.2	OFF	281.00	162.00	ON
	A4 Half	2104	300	701	mm	29.9	17.3	OFF	210.00	121.00	ON
	A4 Quarter	1482	300	494	mm	29.9	17.2	OFF	148.00	85.40	ON
	A4 Eighth	1050	300	350	mm	30.0	17.3	OFF	105.00	60.50	ON
	Letter Full	2776	300	925	inch	1.18	0.68	OFF	10.90	6.30	ON
	Letter Half	2161	300	720	inch	1.18	0.68	OFF	8.50	4.90	ON
	Letter Quarter	1385	300	461	inch	1.18	0.68	OFF	5.45	3.14	ON
	Letter Eighth	1080	300	360	inch	1.18	0.68	OFF	4.25	2.45	ON
	(unavailable)	1500	300	500	mm	30.0	17.2	OFF	150.00	86.40	ON
	Photo 9x13	1270	300	423	mm	30.0	17.2	OFF	127.00	73.00	ON
<b>Ink-Jet Printer</b>	A4 Full	1977	200	988	mm	30.0	17.3	OFF	297.00	171.00	ON
	A4 Half	1401	200	700	mm	30.0	17.3	OFF	210.00	121.00	ON
	A4 Quarter	987	200	493	mm	30.0	17.3	OFF	148.00	85.30	ON
	A4 Eighth	700	200	350	mm	30.0	17.3	OFF	105.00	60.40	ON
	Letter Full	1846	200	923	inch	1.18	0.68	OFF	10.90	6.28	ON
	Letter Half	1440	200	720	inch	1.18	0.68	OFF	8.50	4.90	ON
	Letter Quarter	924	200	462	inch	1.17	0.68	OFF	5.45	3.14	ON
	Letter Eighth	720	200	360	inch	1.18	0.68	OFF	4.25	2.45	ON
	Photo 4 x 6	1001	200	500	mm	30.0	17.3	OFF	150.00	86.40	ON
	Photo 3.5 x 5/Photo 9 x 13	846	200	423	mm	30.0	17.2	OFF	127.00	73.00	ON
<b>Web Page</b>	1280 x 739	1085	300	361	pixel	1280	739	OFF	1280	739	ON
	1152 x 665	976	300	325	pixel	1152	665	OFF	1152	665	ON
	1024 x 590	867	300	289	pixel	1024	590	OFF	1024	590	ON
	832 x 480	705	300	235	pixel	832	480	OFF	832	480	ON
	800 x 461	678	300	226	pixel	800	461	OFF	800	461	ON
	640 x 369	542	300	180	pixel	640	369	OFF	640	369	ON
	Photo CD1024 x 1536	1303	300	434	pixel	1536	887	OFF	1536	887	ON
	Photo CD512 x 768	650	300	216	pixel	768	443	OFF	768	443	ON
	Photo CD256 x 348	294	300	98	pixel	348	200	OFF	348	200	ON
<b>Screen</b>	1280 x 1024	1085	300	361	pixel	1280	739	OFF	1280	739	ON
	1280 x 960	1085	300	361	pixel	1280	739	OFF	1280	739	ON
	1152 x 870	976	300	325	pixel	1152	665	OFF	1152	665	ON
	1024 x 768	867	300	289	pixel	1024	590	OFF	1024	590	ON
	832 x 624	705	300	235	pixel	832	480	OFF	832	480	ON
	800 x 600	678	300	226	pixel	800	461	OFF	800	461	ON
	640 x 480	542	300	369	pixel	640	369	OFF	640	369	ON
<b>Document</b>	A4 Half	504	72	700	mm	30.0	17.3	OFF	210.00	121.00	ON
	A4 Quarter	355	72	493	mm	30.0	17.3	OFF	148.00	85.00	ON
	A4 Eighth	251	72	348	mm	30.0	17.3	OFF	105.00	60.30	ON
	Letter Half	518	72	719	inch	1.18	0.68	OFF	8.50	4.90	ON

<b>BRIGHTNESS CHANNEL</b>	The lightness or darkness of the image. The component of an image. Your scanned image has three channels: red, green, and blue (RGB).
<b>CONTRAST</b>	The gradation of shades in an image. A high contrast image has very dark areas and bright areas without many middle shades. A low contrast image has many tones that are close to the same brightness. Low contrast images are often described as looking 'flat'.
<b>CROP</b>	To trim and delete the unwanted edges of the image.
<b>DPI</b>	Dots (pixels) per inch.
<b>EMULSION SIDE</b>	The side of the film coated with the photographic material.
<b>GAMMA</b>	The contrast of only the middle tones.
<b>HIGHLIGHTS</b>	The lighter areas of the image.
<b>HISTOGRAM</b>	A graph showing the amount of each level of the 256 brightness levels.
<b>INTERPOLATION</b>	A form of adding new pixels in an image when resampling up.
<b>JPEG</b>	The JPEG (Joint Photographic Experts Group) compression standard is capable of producing a high compression ratio while maintaining image quality. JPEG is a widely supported image file format.
<b>MIDTONE</b>	The middle shades of an image, in between light and dark.
<b>NEUTRAL</b>	Having no colour cast, such as black, white, or gray.
<b>PICT</b>	(Macintosh operating system only) The PICT graphic file format uses a lossless compression scheme and is compatible with many Macintosh applications.
<b>PIXEL</b>	Abbreviation for picture element. The dots that make up an electronic image.



- RESAMPLE** To change the number of pixels in the image. If pixels are discarded when shrinking an image, it is called resampling down. If new pixels are created in an image, it is called resampling up.
- RESOLUTION** The number of pixels in a given area of the image; such as pixels per inch or pixels per centimeter. High resolution is the term for an image with a lot of pixels in a given area. Low resolution means there are not many pixels in a given area.
- RGB** Red, Green, and Blue. These are the colours of the three channels that make up the scanned image. Monitors use red, green, and blue phosphors to create the image you see on the screen.
- SHADOWS** The dark areas of an image.
- TIFF** Tagged Image File Format (TIFF) files contain bit-mapped data. In addition to being a widely supported format, TIFF is able to handle the colour palette needed for professional-quality images and graphics.
- WINDOWS® BMP** (Windows only)The BMP graphic file format is for bit-mapped images. BMP images are supported by the Paint accessory and can easily be opened on most PCs running Windows.

**SYMPTOM or MESSAGE**

**SOLUTION**

<p>The computer will not start up after connecting the scanner.</p>	<ul style="list-style-type: none"> <li>• Shut down the computer and all the devices in your SCSI chain, then check the SCSI cables, SCSI ID connection, power cord, and SCSI ID.</li> </ul>
<p>DS_Elite does not appear in the Import drop down list.</p>	<ul style="list-style-type: none"> <li>• Make sure the plug-in module has been placed in the correct folder. See page 12.</li> </ul>
<p>“Could not establish connection with scanner.”</p>	<ul style="list-style-type: none"> <li>• Indicator lamp is off - Turn the Dimâge Scan Elite on, then restart your system.</li> <li>• Check that the SCSI ID is not being used by another SCSI device.</li> </ul>
<p>“Setting up now. Remove the film holder.”</p>	<ul style="list-style-type: none"> <li>• Remove the film holder and click on OK.</li> </ul>
<p>Indicator lamp blinking rapidly (8Hz).</p>	<ul style="list-style-type: none"> <li>• Scanner door opened during setup. Close scanner door.</li> </ul>
<p>“Set film properly...”</p>	<ul style="list-style-type: none"> <li>• Load film into the film holder.</li> </ul>
<p>“Set 35mm film holder properly.”</p>	<ul style="list-style-type: none"> <li>• Set the correct film type.</li> </ul>
<p>“Set APS film holder properly.”</p>	<ul style="list-style-type: none"> <li>• Set the correct film type.</li> </ul>
<p>“Could not recognize the film type.”</p>	<ul style="list-style-type: none"> <li>• Set the film type manually.</li> </ul>
<p>“Insufficient Memory”</p>	<ul style="list-style-type: none"> <li>• Increase the memory requirements for the host application.</li> <li>• If you have scanned multiple images, close and relaunch the host application.</li> </ul>
<p>“Setting up now. Remove the film holder.” appears when the film holder is not loaded.</p>	<ul style="list-style-type: none"> <li>• Contact a Minolta Service Facility to change the fluorescent lamp.</li> </ul>

## SPECIFICATIONS

<b>Type:</b>	Fixed sensor, film transport, single pass
<b>Usable Film:</b>	35mm - negative/ positive, colour/ B&W APS cassette (with optional adapter) - colour/ B&W, negative/ positive
<b>Scanning Dimensions:</b>	35mm - 24.2 x 36.3mm (2688 x 4032 pixels) APS - 17.28 x 29.95mm (1920 x 3328 pixels)
<b>Optical Input Resolution:</b>	2820 dpi
<b>A/D Conversion:</b>	12 bit
<b>Image Sensor:</b>	RGB 3-line CCD (2700 pixels)

**Scan Times (approx):**

	<b>35mm</b>	<b>APS</b>
<b>Prescan</b>	<b>6 sec</b>	<b>6 sec</b>
<b>Scan</b>	<b>40 sec</b>	<b>40 sec</b>
<b>Index Scan</b>	- -	<b>6 sec/frame</b>

<b>Interface:</b>	SCSI-2
<b>SCSI Ports:</b>	DB25, Centronics 50
<b>Light Source:</b>	3 Wavelength Cold Cathode Fluorescent
<b>Power/Frequency:</b>	Product for North America - 100-120 volts AC, 50/60 Hz Product for Europe - 220-240 volts AC, 50/60 Hz This device is to be used with a power source within the voltege as specified on the buck of unit.
<b>Power Consumption:</b>	Max. 30W
<b>Dimensions (W x H x D):</b>	90.5 x 160.5 x 272mm (3.6 x 6.3 x 10.7 in.)
<b>Weight (approx):</b>	2.0kg (4.4 lbs.)

Specifications are based on the latest information available at the time of printing and are subject to change without notice.

Please contact your dealer for information regarding installation, SCSI-2 interface recommendations, or application compatibility. If your dealer is unable to help you, contact one of the distributors listed on the back cover.

### **Please have the following information ready when calling Minolta Technical Support.**

Make and Model of your computer:

Available application RAM:

Operating System version:

Other connected SCSI devices:

DS Elite driver version number:

Symptoms:

Messages that appear on the screen when the problem occurs:

Frequency of occurrence:

### **Determining the version number of your driver software:**

Place the pointer on the status window in the command window to display the version number and SCSI ID.



## Free Manuals Download Website

<http://myh66.com>

<http://usermanuals.us>

<http://www.somanuals.com>

<http://www.4manuals.cc>

<http://www.manual-lib.com>

<http://www.404manual.com>

<http://www.luxmanual.com>

<http://aubethermostatmanual.com>

Golf course search by state

<http://golfingnear.com>

Email search by domain

<http://emailbydomain.com>

Auto manuals search

<http://auto.somanuals.com>

TV manuals search

<http://tv.somanuals.com>