



KONICA MINOLTA

## bizhub 40P/40PX

DO BUSINESS BETTER



### FASTER PRINTS. MORE DOCUMENTS. TOTAL PRODUCTIVITY.

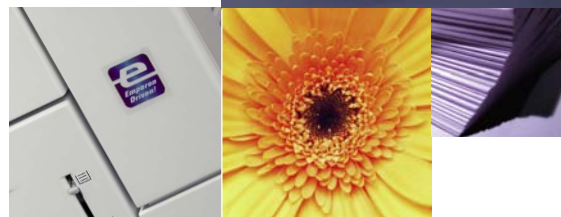
When speed is critical and productivity a top priority, the bizhub™ 40P/40PX is ready for action. This workgroup laser printer is super fast, printing at 45 ppm—with a first page out in as fast as 9.5 seconds—to keep business running at top speed. It's powered by a 500 MHz processor and Konica Minolta's own Emperon™ printer architecture for total efficiency. More than fast, this printer has an 1,800-sheet maximum input capacity and huge printing potential of up to 200,000 pages per month. That's a lot of letters, invoices, flyers, reports and other documents critical to a successful operation. A smart Gigabit Ethernet interface and PageScope™ management tools are included for easy network integration. The bizhub 40P/40PX. Faster prints. More documents per day. Greater productivity for all.

The essentials of imaging

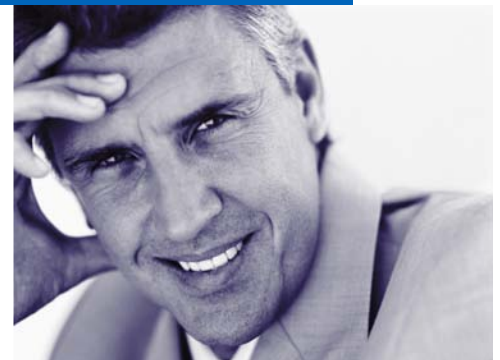
## bizhub 40P/40PX

- ▶ 45 PPM FOR FAST NETWORK PRINTING
- ▶ EMPERON™ PRINT SYSTEM ENSURES VERSATILITY AND HIGH PERFORMANCE
- ▶ 128 MB RAM\*, OPTIONAL 40 GB HARD DRIVE FOR ADDED FUNCTIONALITY
- ▶ POSTSCRIPT 3 AND PCL 6 EMULATIONS, MULTI-PLATFORM COMPATIBLE
- ▶ DIRECT PRINT PDF, XPS, JPEG & TIFF FILES
- ▶ NATIVE XPS INTERPRETER FOR WINDOWS VISTA, INCLUDING WSD SUPPORT
- ▶ 1200 X 1200 DPI FOR CRISP TEXT, FINE LINES, AND DETAILED GRAPHICS
- ▶ GIGABIT ETHERNET, USB 2.0, AND PARALLEL INTERFACES
- ▶ PAGESCOPE SOFTWARE SUITE SIMPLIFIES NETWORK MANAGEMENT
- ▶ POSTCARD TO LEGAL PAGE SIZES, PLUS BANNER PRINTING
- ▶ HIGH-CAPACITY PAPER OPTIONS FOR WORKGROUP REQUIREMENTS
- ▶ INFOLINE-STYLE FEATURE PROVIDES AT-A-GLANCE PRINTER STATUS
- ▶ ROBUST 200,000 PAGE-PER-MONTH MAXIMUM DUTY CYCLE

\*256 MB RAM standard on 40PX



DO BUSINESS BETTER



# bizhub

### HIGH PERFORMANCE

**Engineered for productivity.** With a first page out in as fast as 9.5 seconds and following pages at 45 ppm, the bizhub 40P/40PX is designed for workteam demands. Its Emperon printer architecture and advanced 500 MHz processor keep print jobs moving efficiently. Advanced functions, such as direct print and secure print services, are supported by an optional 40 GB hard drive.

### NETWORK PLAYER

**Smart interface juggles mixed network traffic.** The bizhub 40P/40PX's Gigabit Ethernet interface opens a direct line of network communication to PCs, Macs and Linux workstations, alike. Its multi-protocol support includes TCP/IP v6, IPsec and SSL for the latest in network and security standards.

**Seamless printing.** Support for widely-used emulations, including PostScript 3, PCL 6, PDF and XPS, means printing without a hitch. The bizhub 40P/40PX's comprehensive set of printer drivers empower users to direct document delivery, while PageScope™ utilities simplify setup and management easily from the desktop.

### DEPENDABLE RESOURCE

**Well-outfitted for high demand.** Reliability is the core of the bizhub 40P/40PX's design. This well-constructed printer offers an immense duty cycle of 200,000 prints per month to serve the most demanding print environments. And it uses proven laser technology that delivers long-lasting printed documents and dependable service for years of office challenges.

### DOCUMENT HANDLING VERSATILITY

**Your pick of paper handling.** The bizhub 40P/40PX's 700-sheet paper input can be maximized to a hefty 1,800 sheets, to save time restocking during large print runs. The printer features a 500-sheet output tray and a 70-sheet face-up output tray that's perfect for thick stocks and special print runs. A 500-sheet stacker/sorter unit is also available to keep multiple documents in neat order. For paper conservation, use the optional duplex unit (standard on 40PX) and cut paper use in half.

## FEATURES, OPTIONS & BENEFITS

**Office-friendly features.** The printer's keypad is easy to read and clearly communicates helpful messages. Its innovative InfoLine-style display clearly shows printer readiness at a glance. The bizhub 40P/40PX also has modest proportions and quiet operation to fit nicely into any professional environment.

**Handles assortment of business media.** Office documents come in all sizes. Postcards to legal-size paper can be used in the printer, and even banner paper up to 35.4". Try other media, too—labels, envelopes, cardstock, transparencies and other approved paper types. Load different medias in each tray for versatile document production.

**Professional quality.** 1200 x 1200 dpi resolution brings crisp black text, fine lines, and clear details to your documents. Graphics are rendered in rich shades, from the lightest gray to the deepest black.

**Direct print files.** The bizhub 40P/40PX has a USB 1.1 Host Port for direct printing PDF, XPS, JPEG, and TIFF\* files from a USB flash drive. No computer or additional software required. Or drag and drop files for print using your desktop PageScope Direct Print utility.

\*With the exception of XPS, Direct Print requires your choice of a hard drive or compact flash card. XPS requires a hard drive.

**Advanced print duties.** The printer's powerful 40 GB hard disk (optional) initiates advanced features including fonts and forms storage, secure printing, job collation, and direct print functionality. An optional Compact Flash Card also supports many of these advanced functions.

**Easy setup and maintenance.** For most, setup takes only a few minutes. Helpful administrative software is provided to support more complex network installations. There's just one user-replaceable consumable to install and maintain—a single all-in-one toner cartridge that slides in conveniently from the top.

**Free US-based technical support.** The bizhub 40P/40PX is a printer you can rely on, with its 1-year on-site warranty (3-year on-site for 40PX) and toll-free, US-based support free for five years.

**STATUS AT A GLANCE.** THE FRONT PANEL LCD DISPLAYS TONER LEVELS, PRINT JOB STATUS, AND OFFLINE CONDITIONS. THE INFOLINE-STYLE DISPLAY PROVIDES A VISUAL INDICATION OF PRINTER STATUS UP CLOSE OR ACROSS THE ROOM.



**MAXIMIZE INPUT.** ADD UP TO 1,800 SHEETS—OF DIFFERENT SIZES AND TYPES—FOR FLEXIBLE OFFICE PRINTING. LOAD A CASSETTE WITH ENVELOPES, ANOTHER WITH LETTERHEAD, AND ANOTHER WITH PLAIN PAPER FOR ALL-PURPOSE PRODUCTION.



**DIRECT PRINT QUICK.** SEND PDF, XPS, JPEG AND TIFF FILES DIRECTLY TO THE PRINTER USING A USB FLASH DRIVE, PAGESCOPE WEB CONNECTION OR PAGESCOPE DIRECT PRINT UTILITY. ITS FAST AND CONVENIENT.



**POWERFUL PAGESCOPE™ SOFTWARE.** PAGESCOPE WEB CONNECTION FOR WEB-BASED DEVICE MANAGEMENT, PAGESCOPE NET CARE FOR REMOTE CONFIGURATION OF MIB-COMPLIANT PRINTERS, DESKTOP STATUS MONITOR FOR PRINT STATUS REVIEW AND ERROR ALERTS.

**45 PPM**

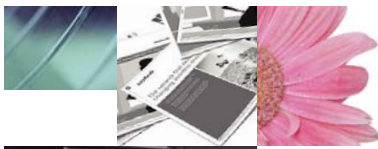
## VERSATILE\_OPTIONS

- 1 150-sheet multipurpose cassette supports media up to 8.5" x 35.4".
- 2 550-sheet cassette eliminates frequent paper replenishing.
- 3 70-sheet face-up output tray for thick stocks and special projects.
- 4 550-sheet cassettes (optional) add up to two for 1,800-sheet max paper input.
- 5 500-sheet stacker/sorter (optional) keeps multi-page collated documents in order.

### Also Available

- ▶ Automatic duplexer (standard on 40PX) for convenient, two-sided printing.





# bizhub 40P/40PX

## GENERAL SPECIFICATIONS

### PRINTING PROCESS

**PRINT METHOD:**  
Electrophotographic Laser

### PRINT SPEED\*:

45.6 ppm  
\*Exact print speed differs depending on system configuration, software application, driver, and document complexity.

### WARM-UP TIME:

≤20 seconds

### FIRST-PAGE OUTPUT TIME:

9.5 seconds

### RESOLUTION:

1200 x 1200 dpi  
600 x 600 dpi

### MAXIMUM MONTHLY DUTY CYCLE:

200,000 prints

### HARDWARE AND SOFTWARE CAPABILITIES

#### PROCESSOR:

500 MHz

#### MEMORY\*:

40P: 128 MB  
40PX: 256 MB (consists of two 128 MB DIMMs)  
Upgradeable to 384 MB  
\*Optional memory of 128 MB or 256 MB available as an upgrade for the 40P. When upgrading the 40PX, the 256 MB option is required (one of the 128 MB DIMMs needs to be removed from the 40PX to accommodate the 256 MB DIMM).

#### HARD DISK DRIVE (optional)\*:

40 GB

\*For downloaded fonts, forms or profile storage; electronic collation; job accounting; direct XPS, PDF, JPEG and TIFF printing; proof then print, secured job, print and hold, and stored job functions.

#### COMPACT FLASH CARD (optional)\*:

256 MB, 512 MB, 1 GB, 2 GB, 4 GB  
\*For downloaded fonts, forms or profile storage; electronic collation; job accounting; direct PDF, JPEG and TIFF printing. Requires Compact Flash Card adapter. Cannot be installed at the same time as Hard Drive option. Compact flash cards available via 3rd-party suppliers.

#### OPERATING SYSTEM COMPATIBILITY:

Windows Vista  
Windows Vista x64  
Windows Server 2003  
Windows Server 2003 x64  
Windows XP  
Windows XP x64  
Windows 2000  
Macintosh OS X (v10.2+)  
Macintosh OS X (Intel 10.4+)  
Linux Red Hat 9  
Linux SuSE 8.2

#### PRINTER EMULATIONS:

PostScript 3  
PCL 6  
XPS Direct Print\*  
PDF 1.6 Direct Print\*\*  
JPEG/TIFF Direct Print\*\*  
\*Requires optional Hard Drive  
\*\*Requires optional Hard Drive or Compact Flash Card

#### PRINTER MANAGEMENT:

PageScope Net Care  
PageScope Web Connection  
PageScope Network Setup  
PageScope Peer-to-Peer Printing Tool  
PageScope EMS Plug-ins:  
Tivoli NetView (2.0)  
CA Unicenter 2.0  
HP OpenView  
Microsoft Management Console (MMC)  
HP Web JetAdmin Plug-in  
PageScope Plug and Print  
PageScope NDPS Gateway

PageScope Direct Print  
PageScope Data Administrator  
Print Monitor  
Status Monitor  
Download Manager

#### INTERFACE SUPPORT

Gigabit Ethernet (10/100/1000BaseTX)  
IEEE 1284 Parallel  
USB 2.0  
USB 1.1. Host Port

#### ETHERNET PROTOCOLS:

TCP/IP (IPv4/IPv6, IPsec, SSL, IEEE802.1x)  
AppleTalk / EtherTalk  
IPX/SPX (Netware 4/5/6), NDS Bindery, NDPS  
ARP, Ping  
Bonjour  
DHCP, AutoIP, BOOTP  
FTP  
HTTP, HTTPS  
IPP1.1  
LPR/LPD  
NetBEUI, SMB  
RAW Socket  
SMTP  
SNMP (v1/2/3)  
SNTP  
SLP  
UDP  
WSD

#### PAPER HANDLING

**STANDARD PAPER INPUT:**  
150-sheet multipurpose cassette  
550-sheet cassette

#### OPTIONAL PAPER INPUT:

550-sheet cassettes (add up to 2)

#### STANDARD PAPER OUTPUT:

500-sheet face-down output tray  
70-sheet face-up output tray

#### OPTIONAL PAPER OUTPUT:

500-sheet stacker/sorter

#### OPTIONAL AUTOMATIC DUPLEXER\*:

For two-sided printing (plain paper only)  
\*Standard on 40PX

#### PAPER SIZES SUPPORTED:

Letter  
Legal  
Executive  
Folio  
Govt. Letter  
Govt. Legal  
Statement  
A4, A5, A6  
B5, B6  
Envelopes:\* Monarch, Com 10, DL, B5 (ISO), C6  
\*Envelopes not supported through duplexer

#### Custom sizes:

Multipurpose cassette\*:  
(W) 3"-8.5" to (L) 5"-35.4"  
(W) 76.2-215.9 mm to (L) 127-900 mm  
\*Banners in tray 1 only

#### All other cassettes:

(W) 3.87"-8.5" to (L) 5.83"-14"  
(W) 98.4-215.9 mm to (L) 148-355.6 mm

#### PRINTABLE AREA:

0.17" (4.2 mm) from all edges  
35.1" maximum print length

#### PAPER WEIGHTS:

Plain paper: 20-28 lb. Bond (68-105 g/m<sup>2</sup>)\*  
Thick Stock: Up to 80 lb. Cover (106-216 g/m<sup>2</sup>)\*  
\*Simplex and duplex printing

#### PRINT MEDIA:

Plain Paper  
Recycled Paper  
Letterhead  
Thick Stock  
Transparencies  
Laser Quality Labels  
Envelopes  
Postcards  
See KMBS Media Guide for more information

#### PHYSICAL

**TYPE:**  
Laser printer with Emperon Print System

#### DIMENSIONS (WXDXH):

16.6" x 18.3" x 15.9"  
(421.8 x 465.4 x 404.3 mm)

#### WEIGHT:

51.6 lbs. (23 kg) - w/ consumables  
47.9 lbs. (22 kg) - w/o consumables  
60.1 lbs. (27.3 kg) - as shipped

#### ELECTRICAL

#### POWER REQUIREMENTS:

120 VAC, 50/60 Hz  
220-240 VAC, 50/60 Hz

#### POWER CONSUMPTION:

Operating: 910W or less, 1,240W Max.  
Standby: 140W or less

#### ENERGY STAR COMPLIANT\*:

15Wh or less  
\*bizhub 40PX only. The addition of some options, in some combinations, may cause the product to become non-compliant.

#### ENVIRONMENTAL

#### TEMPERATURE REQUIREMENTS:

Operating: 50° to 90° F (10° to 32° C)  
Non-Operating: 32° to 95° F (0° to 35° C)

#### HUMIDITY:

Operating: 15% to 85% RH  
Non-operating: 15% to 80% RH

#### NOISE LEVELS:

Operating: ≤56.1 dB(A)  
Standby: ≤28 dB(A)

#### REGULATORY/SAFETY CONFORMITY:

UL  
cUL  
CDRH  
CSA  
DOC  
FCC-B

#### CONSUMABLE\*:

In-box Toner: Black (yields 19,000 prints @ 5% coverage; declared yield value in accordance with ISO/IEC 19752)

\*The stated life expectancy of each consumable is based on printing under specific operating conditions such as page coverage for a particular page size (5% coverage of letter/A4). The actual consumable's life will vary depending on the use and other printing variables including page coverage, page size, media type, continuous or intermittent printing, ambient temperature, and humidity.

#### TYPEFACES:

137 resident PostScript fonts  
93 PCL fonts  
10 line printer fonts

#### WARRANTY:

40P: 1-year on-site  
40PX: 3-year on-site

# bizhub



© 2008 KONICA MINOLTA BUSINESS SOLUTIONS U.S.A., INC. All rights reserved. Reproduction in whole or in part without written permission is prohibited. Konica Minolta and The essentials of imaging are trademarks of KONICA MINOLTA HOLDINGS, INC. bizhub and PageScope are trademarks of KONICA MINOLTA BUSINESS TECHNOLOGIES, INC. All other brands and product names are registered trademarks or trademarks of their respective owners.

Design and specifications are subject to change without notice.



## KONICA MINOLTA

KONICA MINOLTA  
BUSINESS SOLUTIONS U.S.A., INC.  
100 Williams Drive  
Ramsey, NJ 07446

[www.kmbs.konicaminolta.us](http://www.kmbs.konicaminolta.us)  
[www.kmbs.konicaminolta.us/solutions](http://www.kmbs.konicaminolta.us/solutions)

## Free Manuals Download Website

<http://myh66.com>

<http://usermanuals.us>

<http://www.somanuals.com>

<http://www.4manuals.cc>

<http://www.manual-lib.com>

<http://www.404manual.com>

<http://www.luxmanual.com>

<http://aubethermostatmanual.com>

Golf course search by state

<http://golfingnear.com>

Email search by domain

<http://emailbydomain.com>

Auto manuals search

<http://auto.somanuals.com>

TV manuals search

<http://tv.somanuals.com>