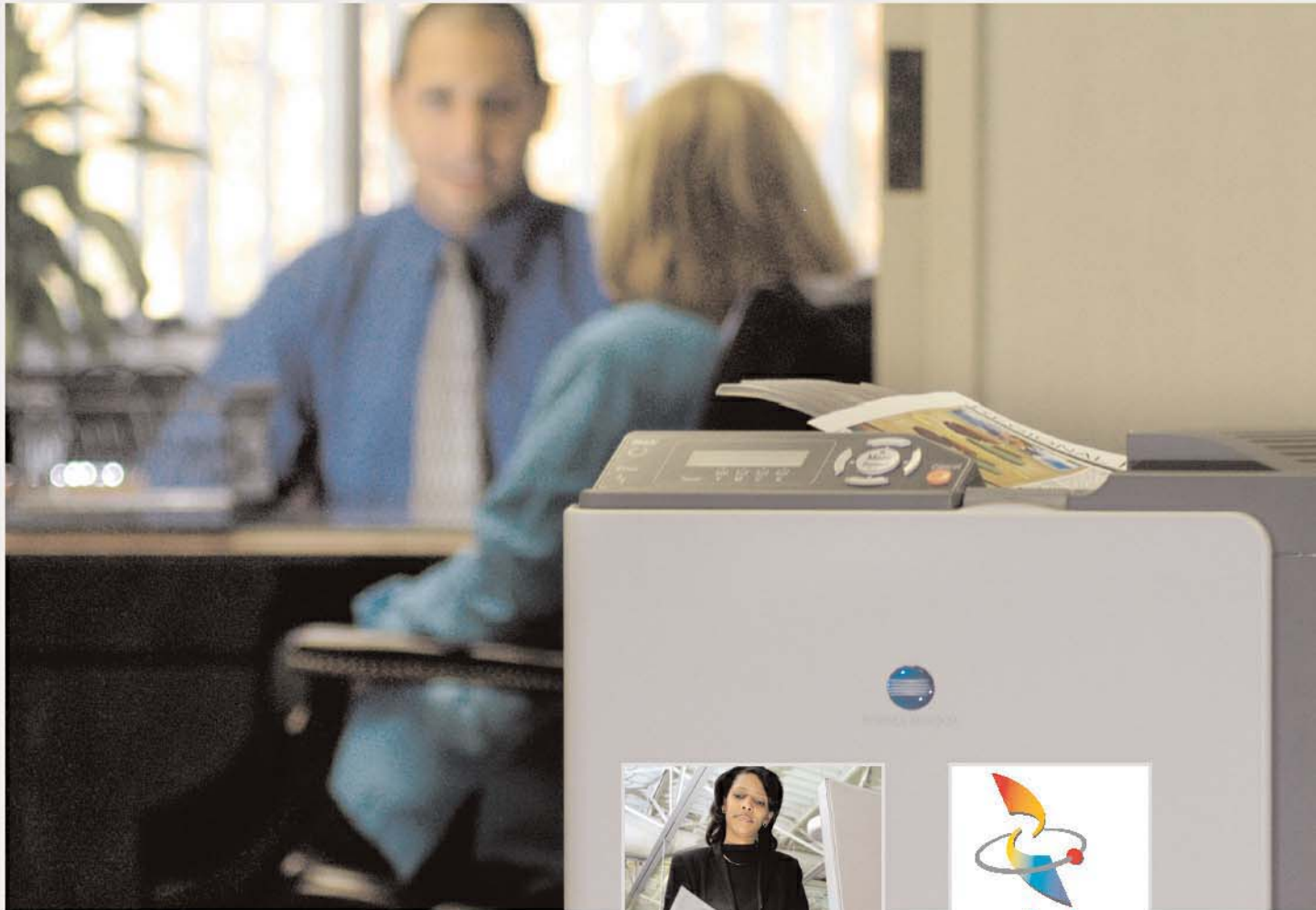




KONICA MINOLTA

# magicolor 5440 DL



## Sales and Technical Guide

The essentials of imaging

Copyright ©2005 KONICA MINOLTA PRINTING SOLUTIONS U.S.A, INC.  
KONICA MINOLTA and the KONICA MINOLTA logo are trademarks or registered trademarks of KONICA MINOLTA HOLDINGS, INC. magicolor is a trademark or registered trademark of KONICA MINOLTA PRINTING SOLUTIONS U.S.A., INC. PageScope is a trademark or registered trademark of KONICA MINOLTA BUSINESS TECHNOLOGIES, INC. All other trademarks or registered trademarks are the property of their respective owners. Some images provided by kind courtesy of digitalvision.com.

July 2005



# Contents

<b>Introduction</b> .....	<b>1</b>
<b>Specs at a Glance</b> .....	<b>2</b>
<b>Key Selling Features</b> .....	<b>3</b>
<b>Target Markets</b> .....	<b>5</b>
<b>Competitive Overview</b> .....	<b>6</b>
<b>Engine</b> .....	<b>8</b>
Type .....	8
Speed .....	8
First Page Out Time .....	8
Weights and Dimensions .....	9
Duty Cycle .....	9
Operating Environment Conditions .....	9
<b>Controller</b> .....	<b>10</b>
Type .....	10
Processor .....	10
Memory .....	10
Resolution .....	11
Compatibility and System Requirements .....	11
Control Panel .....	12
<b>Connectivity</b> .....	<b>14</b>
Standard Interfaces .....	14
<b>Paper Handling</b> .....	<b>15</b>
Standard Paper Handling .....	15



Optional Paper Handling . . . . .	15
Print Media . . . . .	16
Recommended Media . . . . .	16
Paper Path . . . . .	17
Supported Page Sizes . . . . .	18
Imageable Regions . . . . .	20
Advanced Document Processing . . . . .	21
<b>Consumables . . . . .</b>	<b>22</b>
Intelligent, User-Replaceable Consumables . . . . .	22
Consumable Yields . . . . .	23
Supplies Monitoring. . . . .	24
<b>Printer Management . . . . .</b>	<b>26</b>
Printer Drivers . . . . .	26
Status Display . . . . .	28
PageScope Web Connection. . . . .	28
Electronic Documentation . . . . .	30
<b>Camera-Direct Photo Printing . . . . .</b>	<b>31</b>
USB Host Port with PictBridge Compatibility . . . . .	31
Camera Direct Photo Print Functions. . . . .	31
<b>Color Control . . . . .</b>	<b>32</b>
Automatic ICC-Based Color Matching . . . . .	32
ICC Device Profiles. . . . .	33
eAIDC. . . . .	34
<b>Options &amp; Accessories . . . . .</b>	<b>35</b>

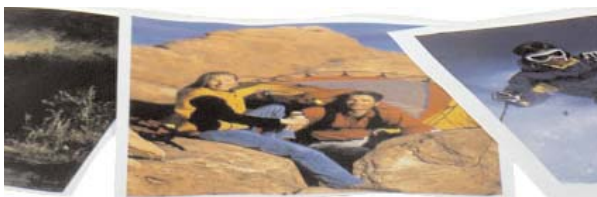


# Introduction



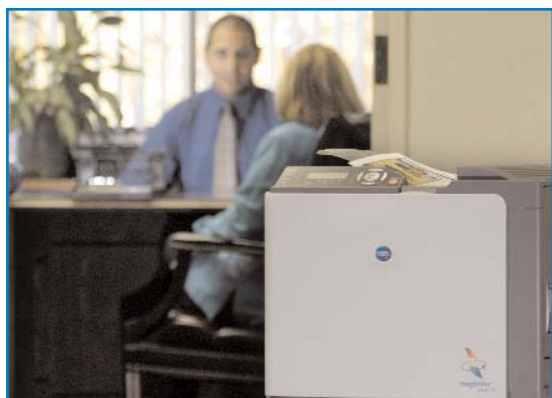
The magicolor® 5440 DL is one fast color laser printer, whipping out crisp, exciting prints at an amazing 27 ppm in both color and black & white. This network-ready speed demon is so versatile that it can support almost any application for users throughout an entire office. And, it features an optional camera-direct photo printing card, allowing the customer to print pictures directly from any PictBridge-compliant digital camera. The magicolor 5440 DL is a high-speed, whole-office solution that will help the user's performance soar to the extreme.

This *Sales and Technical Guide* is intended for use by KONICA MINOLTA sales personnel and reseller partners. It includes complete information about the magicolor 5440 DL and provides useful data that can help sales personnel explain the features of the printer to customers. For the most complete and up-to-date information on the printer, be sure to check the password-protected partner web site at: <http://printer.konicaminolta.com/reseller>



# Specs at a Glance

*An overview of the magicolor 5440 DL printer features.*



<b>Print Method</b>	Electrophotographic tandem color laser
<b>Processor</b>	ARM9, 200 MHz
<b>Print Speed</b>	Up to 27 ppm color (letter) Up to 27 ppm b&w (letter)
<b>Resolution</b>	600 x 600 dpi, 1200 x 600 dpi (default), 2400 x 600 dpi
<b>Duty Cycle</b>	Up to 60,000 prints/month maximum
<b>Memory</b>	64 MB on controller board
<b>Standard Interfaces</b>	Ethernet® (10/100BaseTX), Hi-Speed USB 2.0; USB 1.1 Host Port (for Camera Direct Photo Print Option)
<b>Paper Sizes</b>	Up to 8.5" x 14"
<b>Standard Paper Handling</b>	500-sheet cassette, 100-sheet multipur- pose tray, 250-sheet face-down output tray, manual duplexing
<b>Optional Paper Handling</b>	500-sheet input feeder (add up to two), Automatic duplexing
<b>Print Media Types</b>	Plain paper, thick stock, glossy stock, OHP transparencies, laser-quality labels, envelopes
<b>Software Utilities</b>	Printer drivers for Windows® Server 2003, XP, 2000, NT4, Me, 98SE; Macintosh® OS X (v10.2+); and Linux® Red Hat 8.0+, SuSE 8.1+; PageScope™ Web Connection; Status Display (Windows only); compatible with PageScope NetCare and HP Web JetAdmin®; ICC device profiles
<b>Color Control</b>	Enhanced Automatic Image Density Control (eAIDC), Automatic ICC-based color matching
<b>Compatibility</b>	Microsoft® Windows Server 2003, XP, 2000, NT4, Me, 98SE; Macintosh OS X (v10.2+); and Linux Red Hat 8.0+, SuSE 8.1+
<b>Warranty</b>	One year exchange





## Key Selling Features



The magicolor 5440DL's cost per page is only 1.6¢ for black & white, based on 5% coverage, and 9.3¢ for color, based on 20% coverage.

### Affordability

Priced 27% less than other products in its class, the magicolor also boasts a low overall cost per page in both color and black and white. These affordability factors mean your customer can eliminate their monochrome printers and let the magicolor 5440 DL be their office-wide multi-tasking workhorse.

### Productivity

The magicolor 5440 DL is designed for extreme productivity. It prints in both color and black at 27 ppm—over 20% faster than other products in its class. It features high-yield toner cartridges, a paper capacity of up to 1,600 pages, and a 60,000 print monthly duty cycle, allowing your customer to easily print large volumes of material. And, an optional automatic duplexer can be added for two-sided documents. With its automatic media size detection, auto tray selection, automatic color calibration and paper-jam recovery, the magicolor 5440 DL is practically effortless to use and worry-free.

### Versatility

Able to print on plain paper, labels, transparencies, glossy, and thick paper, the magicolor 5440 DL is a true multi-media artist. It supports up to 110 lb. index paper, in sizes from 3.6" x 5.8" to 8.5" x 14". And, its camera-direct photo printing option allows customers to print directly from their digital cameras.





Front-access to supplies makes for easy replacement.



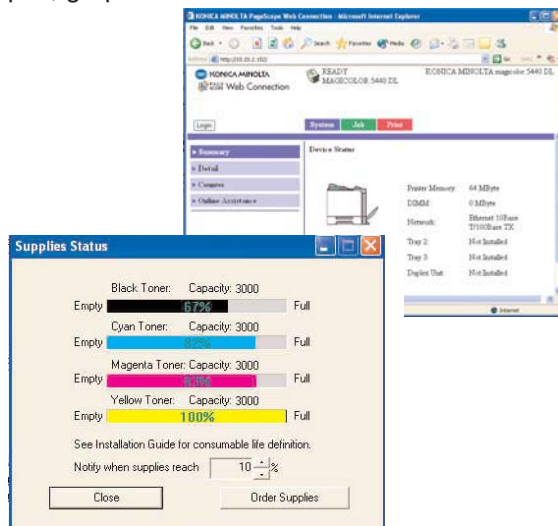
Auto-install software guides the user through set-up.

## Simplicity

Like all KONICA MINOLTA printing products, the magicolor 5440 DL is designed for ease of use. From set up to every day operation, this printer's equipped to keep it simple.

- ❑ **Pre-installed supplies:** When the printer arrives, owners will find the supplies have been pre-installed at the factory to save valuable time during set up.
- ❑ **Front-access to supplies:** When supplies do run low, replacement is easy. Toner cartridges are accessible from the front of the printer, and the inside of the front panel features toner replacement guidelines.
- ❑ **Auto-install software:** The Software Utilities CD-ROM features an auto-install interface that guides users, step-by-step, through the installation of drivers and printer management utilities. It even automatically detects the printer on the network.
- ❑ **Printer management with desktop convenience:** Customers doesn't have to leave their desk to check the status of a print job or to see if there's enough supplies to handle a large print run. The magicolor 5440 is equipped with PageScope Web Connection to allow the user to view this information by accessing the web browser and the printer's IP address to access real-time printer data.

Another desktop management tool included with the magicolor 5440 is the Status Monitor. It resides on your screen for easy accessibility, and shows detailed information about the printer including current status, current consumable levels, and explanations of any errors that may have occurred. It provides this information in a helpful, graphical format.



PageScope Web Connection and the Status Monitor provide easy methods for checking print job and supply status.





## Target Markets

The latest model in KONICA MINOLTA's line of workgroup color laser printers, the magicolor 5440 DL is made for small-to-medium sized businesses that require high performance at an affordable price. It is a perfect fit for:



- Real estate offices
- Accounting offices
- Schools
- Law offices
- Doctors & hospitals
- Development offices (non-profits)
- Automotive dealerships
- Convention centers
- Hotels
- Marketing communication departments
- Sales departments
- Human resources departments
- Safety & training departments



## Competitive Overview

	magicolor 5440 DL	HP® 4650n CLP	Oki® 7350n
Price*	\$1,299	\$2,099	\$1,984
Speed (color)	27 ppm	22	24
Speed (mono)	27 ppm	22	26
Resolution (dpi)	2400 x 600	600 x 600 ImageRet 3600	1200 x 600
Standard interfaces	USB 2.0 10/100BaseTX Ethernet	USB 1.1 10/100BaseTX Ethernet	USB 2.0 10/100BaseTX Ethernet
Standard paper input	600	600	630
Maximum paper input	1,600	1,600	1,690
Standard paper output	250	250	Unknown
Standard paper size (max)	8.5" x 14"	8.5" x 14"	8.5" x 47.24"
Standard memory	64 MB	160 MB	192 MB
Camera direct photo print	Yes (optional)	No	No
Consumables (# items)	6	5	10
Consumables installed?	Yes	No	No
Duty cycle (prints/month)	60,000	85,000	100,000
Footprint (sq. in.)	366.95	378	412.36
Weight (lbs.)	81.4	81	105
Automatic Duplex	Optional	Manual Only	Optional

\* mfr. Web pricing as of 05/17/05



# Competitive Overview

	magicolor 5440 DL	Xerox® 6250n	Dell® 5100cn
Price*	\$1,299	\$2,099	\$999
Speed (color)	27 ppm	26	25
Speed (mono)	27 ppm	26	35
Resolution (dpi)	2400 x 600	2400	2400 image quality
Standard interfaces	USB 2.0 10/100BaseTX Ethernet	USB 2.0 10/100BaseTX Ethernet	USB 2.0 10/100BaseTX Ethernet
Standard paper input	600	600	650
Maximum paper input	1,600	2,100	2,150
Standard paper output	250	500	250
Standard paper size (max)	8.5" x 14"	8.5" x 35.45"	8.5" x 14"
Standard memory	64 MB	256 MB	128 MB
Camera direct photo print	Yes	No	No
Consumables (# items)	6	7	6
Consumables installed?	Yes (Optional)	No	No
Duty cycle (prints/month)	60,000	100,000	90,000
Footprint (sq. in.)	366.95	401.36	305.76
Weight (lbs.)	81.4	80	84
Automatic Duplex	Optional	Optional	Standard

\* mfg. Web pricing as of 01/05/05



# Engine

The magicolor 5440 DL features KONICA MINOLTA's single-pass imaging technology.

## Type

The magicolor 5440 DL features KONICA MINOLTA's single-pass engine technology. The tandem design delivers fast, accurate and reliable color.

## Speed

Page Size	Color		Monochrome	
	Simplex	Duplex	Simplex	Duplex
Letter	27 ppm	15.5 ppm	27 ppm	15.5 ppm
Legal	22 ppm	11.3 ppm	22 ppm	11.3 ppm
A4	25.6 ppm	12.3 ppm	25.6 ppm	12.3 ppm
A5	27 ppm	N/A	27 ppm	N/A
B5	27 ppm	9 ppm	27 ppm	9 ppm
Transparency*	3 ppm	N/A	9 ppm	N/A
Thick Stock*	13.5 ppm	N/A**	13.5 ppm	N/A**

\*Letter-size page

\*\*Auto duplexing not available on thick stock. Use manual duplex to print on both sides of thick stock.

## First Page Out Time\*

Simplex	Color	Monochrome
Letter	14.1 seconds	14.1 seconds
Legal	14.6 seconds	14.6 seconds
A4	14.2 seconds	14.2 seconds

Duplex	Color	Monochrome
Letter	22.3 seconds	22.3 seconds
Legal	23 seconds	23 seconds
A4	22.3 seconds	22.3 seconds

\*From an idle, ready state.



## Weights & Dimensions

### Packaging

Width	Depth	Height
24.49"	21.42"	26.37"
622 mm	544 mm	670 mm

### Printer

Width	Depth	Height
17.9"	20.5"	17.3"
455 mm	520 mm	440 mm

### Weight

Shipping	94.6 lbs (43 kg)
Printer w/consumables	81.4 lbs (37 kg)
Printer w/o consumables	68.2 lbs (31 kg)



## Duty Cycle

60,000 prints (letter size) per months maximum

## Operating Environment Conditions

Power supply	120VAC $\pm$ 10%, 50/60 Hz $\pm$ 3%
Power consumption	Maximum: 1250W maximum Average: 800W Standby: 170W Energy Saver: 42.9W
Temperature	Operating: 50° - 95° F (10° - 35° C) Non-Operating: 32° - 95° F (0° - 35° C)
Humidity	Operating: 15 - 85% RH Non-Operating: 10 - 85% RH
Noise	Operating: <54 dB(A) Standby: <39 dB(A)





# Controller

*The magicolor 5440 DL uses the power of the Windows, Mac, or Linux operating system to deliver great performance for less cost.*

## Type

---

The magicolor 5440 DL uses an easy-to-access controller with 64 MB SDRAM on board.

## Processor

---

The magicolor 5440 DL supports the Graphical Display Interface (GDI) for Windows, host-based PostScript® rasterizer for Macintosh, and PageScope Raster Language for Linux. As such, the printer utilizes the power of the host computer's CPU for processing documents prior to printing. The printer's controller features an ARM9, 200 MHz processor for imaging the document.

## Memory

---

The magicolor 5440 DL includes 64 MB of RAM on the controller. This memory is sufficient for printing all supported page sizes (simplex and duplex) at all resolutions. The printer also has one available DIMM (Dual In-Line Memory) socket for increasing system RAM.

- Standard RAM: 64 MB on board
- Maximum RAM: 576 MB

The magicolor 5440 DL has one open DIMM slot that accepts up to 512 MB RAM available exclusively from KONICA MINOLTA. Memory is available in 128 MB, 256 MB, or 512 MB increments. This additional memory can improve the printer's performance, especially when used in a network environment with the optional duplexer or camera-direct photo printing feature installed.





Select the printer's 2400 x 600 dpi setting for optimum print quality.

## Resolution

- 2400 x 600 dpi
- 1200 x 600 dpi (default)
- 600 x 600 dpi

As shipped, the magicolor 5440 DL's print resolution is 1200 x 600 dpi. This quality setting is perfect for printing general business documents that include text and graphics. For printing document drafts and disposable documentation, select the printer's 600 x 600 dpi resolution.

For best print quality, choose the printer's 2400 x 600 dpi resolution through the printer driver. This resolution is perfect for printing everything from photographs and clip art to text and graphics. It also provides great detail and character in fine lines and halftones.

The magicolor 5440 DL's print quality is further enhanced by the printer's unique polymer toner technology. See "Consumables and Supplies" for more information.

With the 64 MB of RAM installed, the magicolor 5440 DL can print simplex and duplex pages at all available resolutions.

## Compatibility and System Requirements

- Windows Server 2003/XP/2000/NT4/Me/98SE
- Macintosh OS X (v10.2+)
- Linux Red Hat 8.0+, SuSE 8.1+

The magicolor 5440 DL utilizes the processing capabilities contained in the Windows, Mac OS X, and Linux operating systems to prepare documents for printing at the host computer. This method of document production is efficient in that the data is prepared and transferred to the printer in a compressed format. Leveraging the document printing capabilities of the computer's operating system also enables KONICA MINOLTA to keep the cost of the 5440 DL very affordable.



### Windows System Requirements

<b>PC Hardware</b>	400 MHz Pentium® II-class minimum; 500 MHz Pentium III-class recommended
<b>Operating System</b>	Windows Server 2003 Windows XP Windows 2000



	Windows NT4
	Windows Me
	Windows 98 SE
<b>PC Memory</b>	128 MB
<b>Hard Disk Space</b>	256 MB or more
<b>CD-ROM</b>	1x or faster to install drivers & utilities



Macintosh System Requirements

<b>Mac Hardware</b>	Power Mac® G3 minimum; Power Mac G4 recommended
<b>Operating System</b>	OS X (v10.2+)
<b>Hard Disk Space</b>	256 MB or more
<b>CD-ROM</b>	1x or faster to install drivers & utilities



Linux System Requirements

<b>PC Hardware</b>	400 MHz Pentium II-class minimum; 500 MHz Pentium III-class recommended
<b>Operating System</b>	Red Hat 8.0+ SuSE 8.1+

### Control Panel

To convey printer status and select configurations and options, the magicolor 5440 DL has an easy-to-navigate control panel that features:

*This multitasking keypad conveniently shows users how much of each toner remains.*

*The keypad is also back lit for easy reading.*





- 2 line, 16 character back-lit LCD
- 6 keys
- 2 LEDs

The LCD window serves three primary purposes. It displays a status message indicating the current state of the printer or a printer idle status; shows users their options when reviewing or altering settings through the printer's control panel menu; conveniently displays toner supply levels.

LCD messages can be displayed in eight different languages—English, French, German, Spanish, Italian, Czech, Japanese (Katakana), and Brazilian Portuguese.

The six keys on the front panel enable users to review and change printer settings.

**Menu / Select:** used to enter the menu system to view and change specific menu options.

**Up Arrow:** used to scroll up through the entries in the menu system and to scroll upward through available characters if in a menu choice that is changeable character by character. Also used to print a demo page. Simply press and hold for two seconds.

**Down Arrow:** used to scroll down through the entries in the menu system. Also used to scroll downward through available characters if in a menu choice that is changeable character by character.

**Left Arrow:** scrolls left in the menu structure. Also moves left through scrollable menu choice selections when selections are whole words.

**Right Arrow:** scrolls right in the menu structure. Also moves right through scrollable menu choice selections when selections are whole words.

**Cancel:** cancels the current print job. Cancels the menu choice or selection if in the menu system at the time.

The two **LEDs** provide visual indication of the following:

**Error:** lights amber to indicate the presence of an LCD message generally referring to an offline condition such as paper empty, toner empty, or paper jam.

**Ready:** lights green to indicate the printer is ready to accept and process jobs. The LED will blink when the printer is receiving data.



# Connectivity

*The magicolor 5440 DL is ready to serve one user or many printer users.*

## Standard Interfaces

- Ethernet (10/100BaseTX)
- USB 2.0
- USB 1.1

For workgroup printing, the magicolor 5440 DL has an auto-sensing, resident Ethernet (10/100BaseTX) interface. This flexible interface operates in both the traditional 10 mbps LAN and Fast Ethernet (100 mbps) networks, and supports TCP/IP, IPP, DHCP, BOOTP, HTTP, SNMP, SLP, and LPR protocols.

A high-speed USB 2.0 interface is included with the magicolor 5440 DL. It features a 4pin Series B connector and runs at 480 Mbps. This "Plug and Play" interface supports Windows Server 2003, XP, 2000, NT4, Me, and 98SE operating systems, as well as Linux and Macintosh OS X systems.

The magicolor 5440 DL also features a USB 1.1 host port for optional camera direct photo printing.

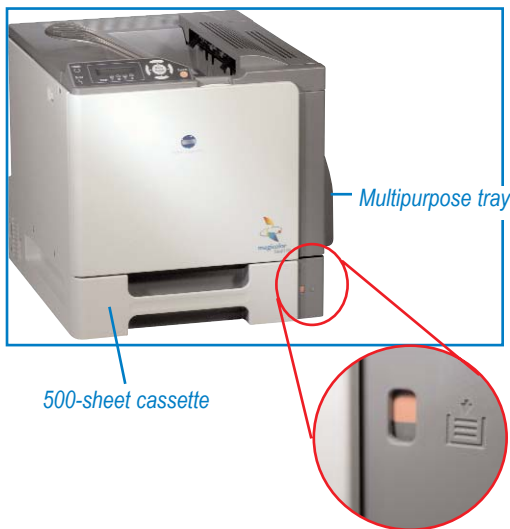






# Paper Handling

*The magicolor 5440 DL supports a variety of paper sizes and paper handling options to meet the needs of every office.*



*The standard cassette holds up to 500 sheets of paper up to letter (8.5" x 11") size. It features a convenient paper-level indicator.*



## Standard Paper Handling

- 500-sheet cassette
- 100-sheet multipurpose tray
- 250-sheet face-down output tray

The magicolor 5440 DL includes a 500-sheet cassette for paper and other print media. The cassette accommodates page sizes up to 8.5" x 11" and features a gauge that indicates the amount of paper inside.

The 100-sheet multipurpose tray accommodates up to legal size paper (8.5" x 14").

Printed pages are delivered into the printer's 250-sheet face-down output tray.

## Optional Paper Handling

- 500-sheet input feeder (up to 2)
- Automatic duplexer
- Printer cabinet

The magicolor 5440 DL has several paper handling options. Users can increase paper input to 1,100 or 1,600 sheets by adding one or two 500-sheet input feeders. For two-sided printing, the magicolor 5440 DL can be equipped with an automatic duplexer. And, the optional printer cabinet provides convenient media storage, with a caster base to allow the user to easily move the 5440 DL.



## Print Media

The magicolor 5440 DL supports a range of print media to handle a variety of applications. All media types are supported through the printer's standard input cassette and multipurpose tray.

Supported Media	Specifications	Driver Setting	500-Sheet Std. Cassette/ Multipurpose Tray	Optional Feeder	Optional Duplex
Plain paper	16–24 lb (60–90 gsm)	Plain Paper	Supported	Supported	Supported
Recycled paper	16–24 lb (60–90 gsm)	Recycled Paper	Supported	Supported	Supported
Letterhead	16–24 lb (60–90 gsm)	Letterhead	Supported	Supported	Supported
Thick stock 1	24-50 lb (90–150 gsm)	Thick Stock 1	Supported	N/A	N/A
Thick stock 2	50-110 lb Index (151–210 gsm)	Thick Stock 2	Supported	N/A	N/A
Glossy	Supported	Glossy	Supported	N/A	N/A
Transparency	Supported	Transparency	Supported	N/A	N/A
Labels	Supported	Labels	Supported	N/A	N/A
Envelopes	Supported	Envelope	Supported	N/A	N/A

## Recommended Media

Several media types have been tested and approved for use with the magicolor 5440 DL. The chart below indicates specific brands of media recommended for printing with the magicolor 5440 DL.

### Plain paper

Color	Georgia-Pacific Microprint Laser 1000 - 24 lb. (90gsm) Hammermill Laser Print Radiant White
Monochrome	Xerox 4024P - 20 lb.
Recycled	Georgia-Pacific Geo Cycle - (75 gsm)

### Thick stock

Canon NS700 - (157 gsm)

### Transparency

QMedia - 50-sheet letter - (P/N: 1710464-001)  
QMedia - 5-sheet letter - (P/N: 1710464-002)  
3M CG3700

### Envelopes

Business envelopes 90008 - 24 lb.

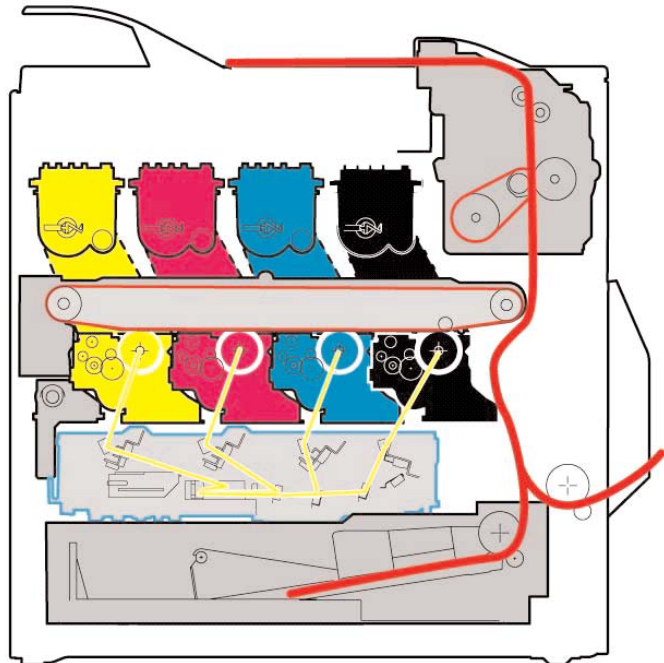


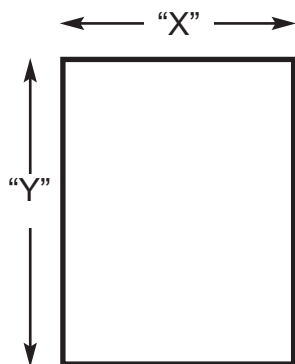
## Paper Path

The straight paper path of the magicolor 5440 DL allows it to print pages more quickly and enables it to support heavier media types.

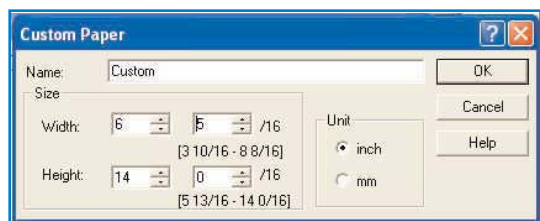
*Indicated by the red line, the magicolor 5440 DL supports a straight paper path for faster speed and heavier media support.*

---





The table at right refers to X and Y dimensions of the media as diagrammed above.



Define custom sizes from the magicolor 5440 DL driver.

## Supported Paper Sizes

### Standard 100-Sheet Multipurpose Tray

Cut Sheet	x-Dimension	y-Dimension
Letter	8.5"	11"
A4	210 mm	297 mm
Legal	8.5"	14"
Executive	7.25"	10.5"
Statement	5.5"	8.5"
Folio	210 mm	330 mm
Letter Plus	8.5"	12.7"
Foolscap	203 mm	330 mm
UK Quarto	8"	10"
Govt. Letter	8"	10.5"
Govt. Legal	8.5"	13"
A5	148 mm	210 mm
B5 (JIS)	182 mm	257 mm
Kai 16	185 mm	260 mm
Kai 32	130 mm	185 mm
16K	195 mm	270 mm
Custom	3.62" (min) 8.5" (max)	5.83" (min) 14" (max)

### Postcard

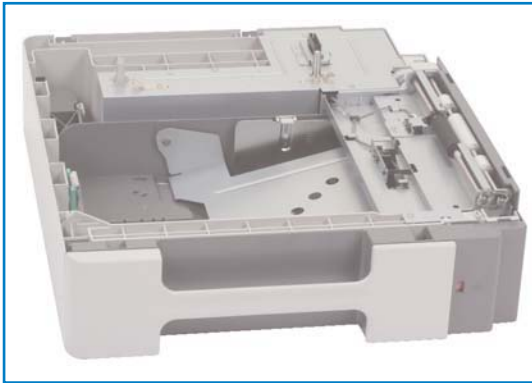
Japanese postcard	100 mm	148 mm
Double postcard	148 mm	200 mm

### Envelope

Monarch	3.875"	7.5"
Com #10	4.125"	9.5"
DL	110 mm	220 mm
B5 (ISO)	176 mm	250 mm
C5	162 mm	229 mm
C6	114 mm	162 mm
You 4	105 mm	235 mm
Cho #3	120 mm	235 mm
Cho #4	90 mm	205 mm

### Standard 500-sheet Cassette

Cut Sheet	x-Dimension	y-Dimension
Letter	8.5"	11"
A4	210 mm	297 mm



The optional feeder can accept up to legal-size media.

#### Optional 500-Sheet Input Feeder

Cut Sheet	x-Dimension	y-Dimension
Letter	8.5"	11"
A4	210 mm	297 mm
Legal	8.5"	14"
Executive	7.25"	10.5"
Letter Plus	8.5"	12.7"
Govt. Letter	8"	10.5"
Govt. Legal	8.5"	13"
Foolscap	203 mm	330 mm
Folio	210 mm	330 mm
B5 (JIS)	182 mm	257 mm



Duplex pages up to legal in size.

#### Optional Automatic Duplexer

Cut Sheet	x-Dimension	y-Dimension
Letter	8.5"	11"
A4	210 mm	297 mm
Legal	8.5"	14"
Executive	7.25"	10.5"
Letter Plus	8.5"	12.7"
Govt. Letter	8"	10.5"
Govt. Legal	8.5"	13"
Foolscap	203 mm	330 mm
Folio	210 mm	330 mm
B5 (JIS)	182 mm	257 mm
Kai 16	185 mm	260 mm
16K	195 mm	270 mm





## Imageable Regions

- Non-printable area: 0.16" (4 mm) from all edges
- Guaranteed print length - standard: 10.68" (271 mm)
- Guaranteed print length - maximum: 13.68" (348 mm) using optional lower feeder

Page Size	Dimension	Guaranteed Printable Region
Letter	8.5" x 11"	8.18" x 10.68"
A4	210 x 297 mm	202 x 289 mm
Legal	8.5" x 14"	8.18" x 13.68"
Executive	7.25" x 10.5"	6.98" x 10.18"
Statement	5.5" x 8.5"	5.18" x 8.18"
UK Quarto	203 x 254 mm	195 x 246 mm
Letter Plus	8.5" x 12.7"	8.18" x 12.37"
Govt. Letter	8" x 10.5"	7.68" x 10.18"
Govt. Legal	8.5" x 13"	8.18" x 12.68"
Foolscap	203 x 330 mm	195 x 326 mm
Folio	210 x 330 mm	202 x 322 mm
A5	148 x 210 mm	140 x 202 mm
B5 (JIS)	182 x 257 mm	174 x 249 mm
Kai 16	185 x 260 mm	177 x 252 mm
Kai 32	130 x 185 mm	122 x 177 mm
16K	195 x 270 mm	187 x 262 mm
Japanese postcard	100 x 148 mm	92 x 140 mm
Double postcard	148 x 200 mm	140 x 192 mm
Monarch	3.9" x 7.5"	3.58" x 7.18"
Com #10	4.125" x 9.5"	3.78" x 9.18"
DL	110 x 220 mm	102 x 212 mm
B5 (ISO)	176 x 250 mm	168 x 242 mm
C5	162 x 229 mm	154 x 221 mm
C6	114 x 162 mm	106 x 154 mm
You 4	235 x 105 mm	227 x 97 mm
Cho #3	120 x 235 mm	112 x 227 mm
Cho #4	90 x 205 mm	82 x 197 mm



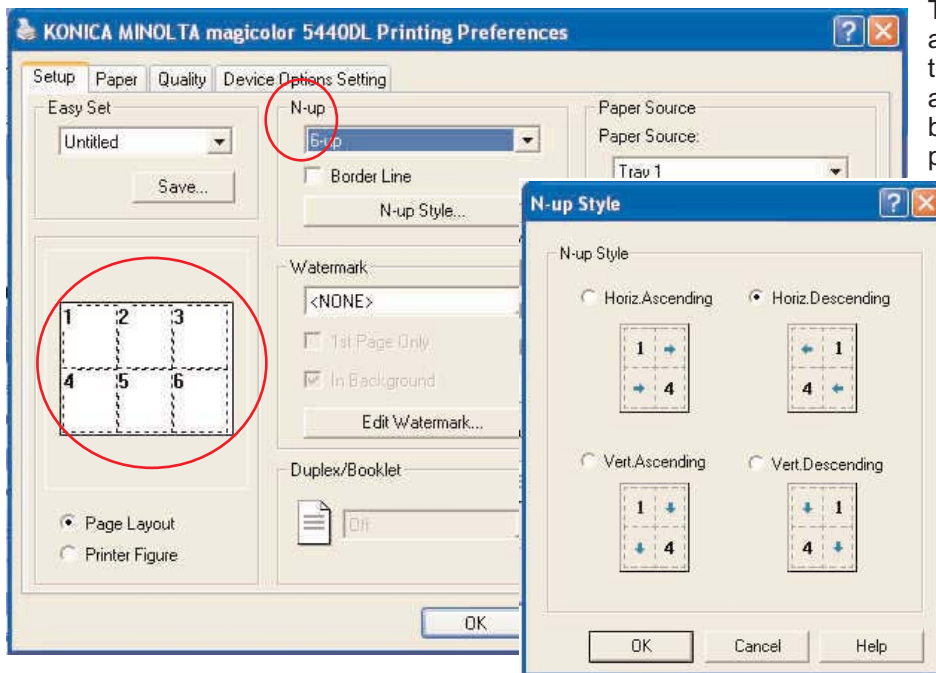
## Advanced Document Processing

The magicolor 5440 DL's driver offers a means of activating additional document handling functions, including:

- Printer-based electronic collation
- Watermarks
- N-up printing

Instead of transmitting a multiple page print job several times over the network to get the number of “copies” required, simply select the copy count in the magicolor 5440's driver and send the job once. Called printer-based electronic collation, this feature enables the printer to deliver the number of sets required, with pages in proper order, without bogging down the network.

Using the printer's driver, users can also add common text watermarks, such as “CONFIDENTIAL” and “DRAFT” to a document—or create a custom watermark of their own. The driver includes selections for indicating the watermark's placement.



The magicolor 5440 DL driver also has an N-up option that allows users to print their multi-page documents with 2, 4, 6, 9 and 16 pages on a single sheet. Add a border line and select the flow of the pages across the sheet using easy to understand driver settings.

**N-up Printing:** Print a multiple page document with up to 16 pages of that document on one sheet.



# Consumables

*Intelligent supplies...it's a new concept in printing...and the magicolor 5440 DL's got it!*

## Intelligent, User-Replaceable Consumables

- Cyan, magenta, yellow and black (CMYK) all-in-one toner
- Transfer belt
- Waste toner box

The magicolor 5440 DL uses four (CMYK) all-in-one cartridges that include toner and OPC in one easy to install, easy to store unit. Each cartridge is color coded for error-free installation and features an intelligent chip that stores information on toner levels for accurate supplies monitoring (See "Supplies Monitoring" for further details).

The magicolor 5440 DL uses an innovative toner technology, KONICA MINOLTA's Simitri Polymerized Toner, to produce exceptional output. It's composed of smaller particles that are more uniform in size and shape than conventional toner to create finer lines, better halftones, and improved image quality. It also has a higher transfer efficiency than regular toner, further contributing to output quality while producing less waste toner. A lubricant encapsulated within the toner particles eliminates the need for fuser oil, meaning users have one less consumable to buy.



*Four cartridges include toner and OPC in one unit.*



The printer's waste toner box captures excess toner from the printing process and prevents engine damage from loose toner particles.



The magicolor 5440 DL also has a transfer belt that takes the image composed of toner and transfers it to the print media as the media passes through the engine.



## Consumable Yields

Consumable yields are expressed as a number of letter/A4 pages @ 5% coverage. Actual consumable life depends on variables such as page coverage, page size, media type, continuous or intermittent printing, duplexing, number of color planes, ambient temperature, and humidity.

The magicolor 5440 DL includes starter cartridges that hold enough toner for an average of 3,000 prints (5% coverage, letter-size, continuous printing). It also includes a full-capacity transfer belt unit and waste toner box.

Replacement supplies offer the following yields:



Consumable	Yield*	
Black Toner	6,000 or 12,000 pages	
Cyan Toner	6,000 or 12,000 pages	
Magenta Toner	6,000 or 12,000 pages	
Yellow Toner	6,000 or 12,000 pages	
Transfer Belt Unit	120,000 pages	continuous printing
	100,000 pages	intermittent printing
Waste Toner Box	40,000 pages	black & white printing
	10,000 pages	color printing

\*Based on 5% letter/A4-size, single-sided page coverage

Optimal consumables life is achieved with continuous printing (three pages or more per job). Intermittent printing (one page per job) will reduce consumable life as stated.



## Supplies Monitoring

The magicolor 5440 DL uses its intelligent all-in-one cartridges to communicate remaining supply levels to consumers. With a smart tracking chip installed, it accurately measures remaining toner and displays its findings in four locations (see below) for evaluation.

This feature is both practical and convenient as it helps a user determine if there is enough toner remaining to complete job. It's also helpful in stocking supplies, enabling a company to keep a just-in-time inventory of supplies on hand.

To view remaining supply levels, users have four options:

- Front keypad
- Configuration page
- Status Display
- PageScope Web Connection

The printer's front keypad provides the quickest method for reviewing supply levels.

*The quickest way to review supply levels is through the printer's front keypad.*



From the front keypad, users can access the menu system to print a Configuration Page. This sheet details information on all supplies as well as showing the number of pages printed, options installed, network setup, and engine settings.

A third method for reviewing how much toner remains in each cartridge is with the Status Display. This handy utility resides on the desktop and, by simply selecting Display > Supplies Status, shows this information in a full-color, gas gauge-style graphic.





For individuals who do not sit near the printer, PageScope Web Connection offers a convenient way to review supply levels. Simply type in the magicolor 5440 DL's Internet Protocol (IP) address into the address field of any Web browser. PageScope Web Connection offers a snapshot of this and other printer information, including print job status and the printer's current configuration.

*PageScope Web Connection lets you review supply levels from the convenience of your desktop.*

**KONICA MINOLTA**

PageScope Web Connection

READY  
MAGICOLOR 5440 DL

KONICA MINOLTA magicolor 5440 DL

Login

System
Job
Print

	<u>Consumables</u>	<u>Status</u>	<u>Max Life</u>
▶ Summary	Black Toner Cartridge	<div style="width: 49%; background-color: black;"></div> 49%	3000
▼ Detail	Cyan Toner Cartridge	<div style="width: 53%; background-color: cyan;"></div> 53%	3000
▶ Input Tray	Magenta Toner Cartridge	<div style="width: 69%; background-color: magenta;"></div> 69%	3000
▶ Network	Yellow Toner Cartridge	<div style="width: 79%; background-color: yellow;"></div> 79%	3000
▶ Consumables	Transfer Roller Unit	Ready	-
▶ Counter	Transfer Belt Unit	Ready	-
▶ Online Assistance	Waste Toner Bottle	Ready	-



# Printer Management

*All the tools for printer management conveniently located on your desktop.*

---

The magicolor 5440 DL offers a number of convenient tools for printer control that are included on a Software Utilities and Documentation CD-ROM shipped with the printer.

- Printer drivers for Windows, Macintosh, and Linux
- Status Display
- PageScope Web Connection
- Electronic Documentation

The CD, in itself, is also convenient. It features an auto-install interface that automatically detects the printer on the network and guides the user step by step through the installation process.

## Printer Drivers

---

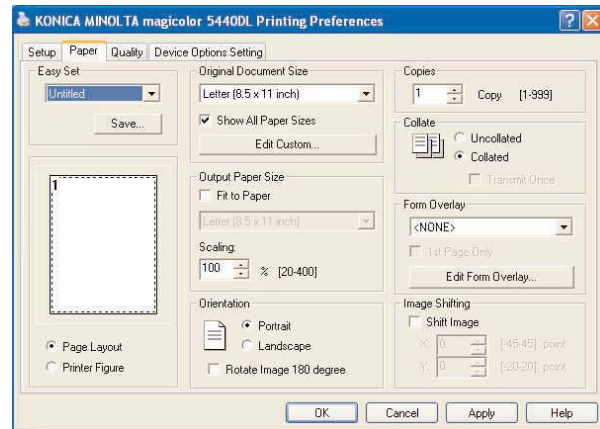
The magicolor 5440 DL ships with Microsoft certified printer drivers that support Windows Server 2003, XP, and 2000. Drivers for older Windows versions (NT4, Me, and 98SE) are included with the printer but are no longer certified by Microsoft due to the age of these versions. The customer must install the driver on each computer that will print to the magicolor 5440 DL. The installation wizard finds the printer and quickly and installs the driver in minutes.

For Macintosh users, the magicolor 5440 DL offers a driver for Mac OS X (v10.2+) that supports the Rendezvous networking technology built into this operating system. When it's installed on a network, the magicolor 5440 DL immediately broadcasts information about its capabilities to other Rendezvous-enabled devices on the network. Macintosh users of systems running OS X 10.2 or higher can immediately begin printing to the magicolor 5440 after installing the printer driver.

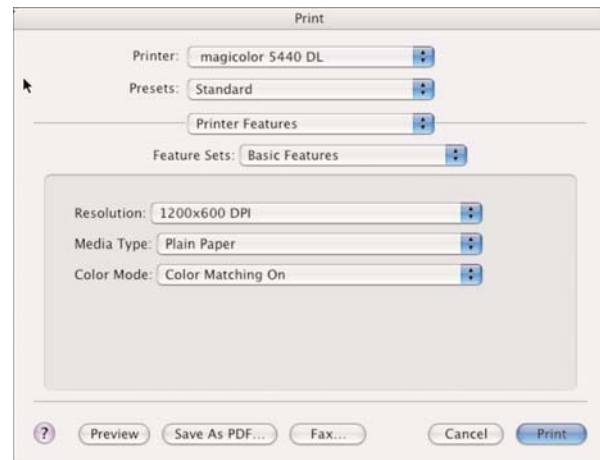
Drivers for Linux Red Hat 8.0+ and SuSE 8.1+ are also included.



*The magicolor 5440 DL driver for Windows features a tabbed layout that conforms to Microsoft standards, making it very simple to understand.*



*The magicolor 5440 DL driver for Macintosh offers easy-to-navigate drop-down selections.*



The Windows, Macintosh, and Linux drivers provide a graphical method for making printer selections, including:

- Selecting media type, copy count, paper size, paper source, paper orientation, and duplexing
- Adjusting quality and color settings including resolution and color matching
- Adding custom or preselected watermarks, performing n-up printing, and scaling pages
- Performing Easy Set driver preferences

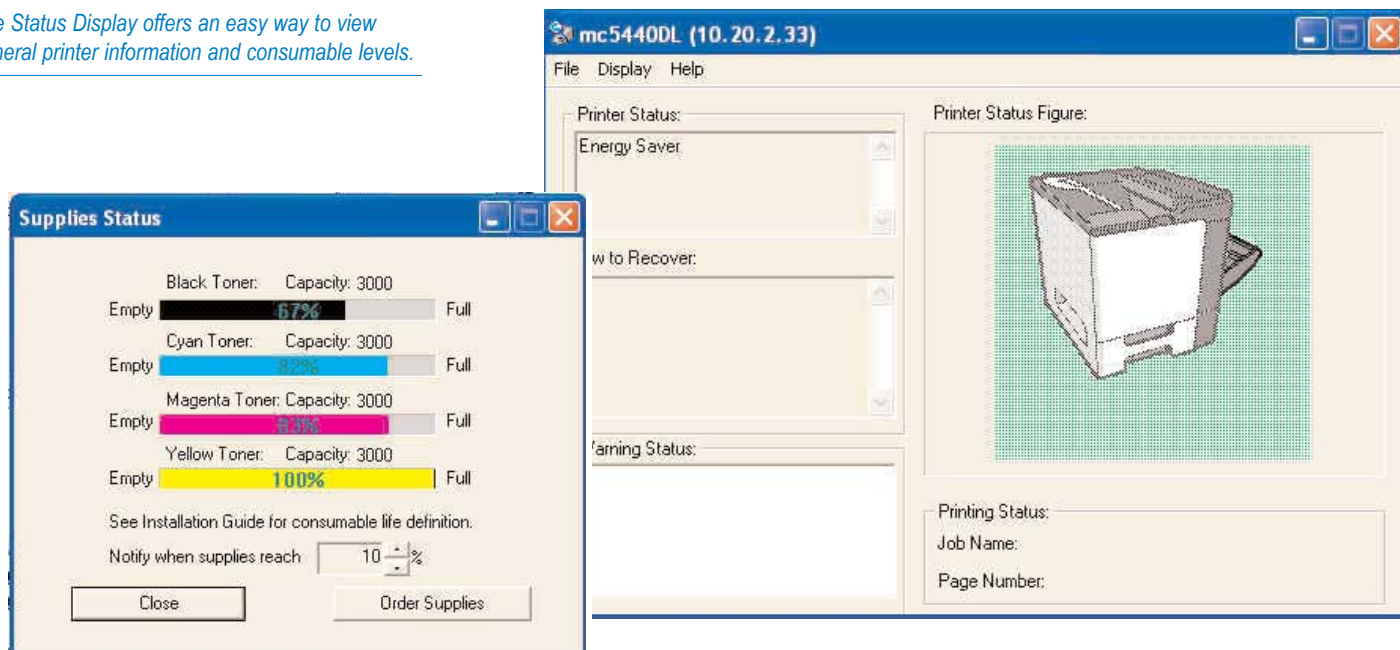
The drivers are available in English, French, Italian, German, Czech, Polish, Slovak, Hungarian, Russian, Spanish, Portuguese (Brazilian), Japanese (Kanji), Korean, Chinese - simplified, and Chinese - traditional languages.



## Status Display

The Status Display provides detailed information about the printer including current levels for consumables and explanations of any errors that may occur. This helpful utility resides as an icon on the desktop and can be activated with a simple double-click. The Status Display utility is available for Windows operating systems only.

*The Status Display offers an easy way to view general printer information and consumable levels.*



## PageScope Web Connection

The magicolor 5440 DL includes an embedded web page that allows users to easily retrieve real-time information about the status of the printer. This feature is called PageScope Web Connection and requires no additional software application on users' computers other than their existing web browser.

PageScope Web Connection provides users with a simple way to find the answers to questions like these about their printer:

- How much toner is left in the cartridges?
- Has my document printed yet?
- What's the default setting of the printer?



PageScope Web Connection information is divided into three categories:

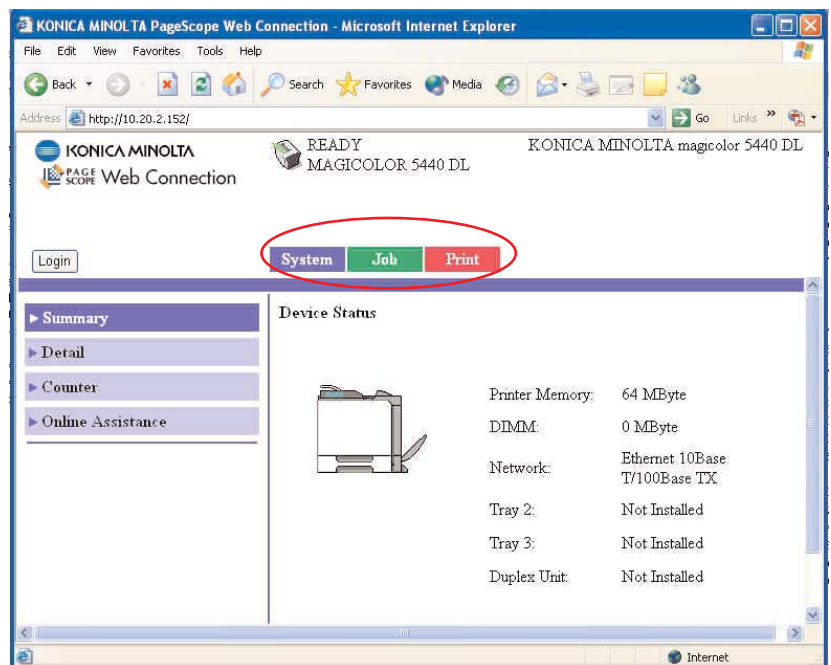
- System: This tab highlights the printer's configuration, paper size and media type loaded in each installed tray, network settings, supply levels, and number of pages printed.
- Job: The Job tab displays information about the most recent print jobs, including the job owner, status of the print job, and number of pages printed.
- Print: This tab allows users to print a Configuration or test page, or to print a menu map to more easily navigate the front panel.

PageScope Web Connection also provides a convenient Internet link to the support pages for KONICA MINOLTA in the event of a problem with the printer. PageScope Web Connection is another example of the commitment of KONICA MINOLTA to making color printing as simple as possible for everyone.

PageScope Web Connection is supported through these browsers:

- Windows: Microsoft Internet Explorer (v5.5+), Netscape Navigator (v7.0+)
- Macintosh: Microsoft Internet Explorer (v5.0+), Netscape Navigator (v7.0+), Safari (v1.0+)

*Check printer and print job status using your Web browser.*







## Electronic Documentation

---

Included on the Software Utilities and Documentation CD-ROM are two manuals users will find especially useful—the User's Guide and the Installation Guide. The documentation, developed using Adobe® Acrobat, is fully searchable for locating and viewing selected criteria on screen or printing information as needed. As a CD-ROM-based tool, the electronic documentation can easily be posted on a network server for general users or network administrators to retrieve information on demand.

Another advantage of the on-line documentation is the audio/video clips of installation, operation, and troubleshooting actions, that give users a step-by-step visual of common printer procedures.



# Camera-Direct Photo Printing

## USB Host Port with PictBridge Compatibility

The camera-direct photo printing feature is accessed through an optional card that plugs into the controller. When added, this card activates the USB 1.1 port and direct print menu options, enabling the user to print pictures directly from a PictBridge-compatible digital camera. As shown in the table below, the printer's built-in PictBridge support allows the user to control various photo printing features, depending on the amount of RAM installed. For full functionality and best quality, an additional 128 MB of RAM is required.



The magicolor 5440 DL showing the USB 1.1 port.

## Camera Direct Photo Print Functions

Feature	Base RAM (64 MB)	Additional RAM (128 MB; 192 MB total)
Resolution		
- Draft (600 x 600)	Yes	Yes
- Normal (1200 x 600)	No	Yes
- Fine (2400 x 600)	No	Yes
Paper Size (Fit to Width)	Yes	Yes
Media Type	Yes	Yes
Brightness	Yes	Yes
Contrast	Yes	Yes
1up, 2up, 4up, 6up, 8up	Yes	Yes
Batch Print	Yes	Yes
Index Print	No	Yes
Multiple Copies	Yes	Yes
Rotate	Yes	Yes
Data Print (date, file name)	Yes	Yes



# Color Control

*Get great color without great effort.*

---

The magicolor 5440 DL is designed with the color novice in mind. The printer features an internal color matching system that automatically selects the proper color model based on the specific elements on any given page. For more professional color users, the printer supports ICC device profiles to more intricately adjust color. Lastly, the magicolor 5440 DL includes enhanced Automatic Image Density Control (eAIDC) so the printer will produce consistent color each and every print.

## Automatic ICC-Based Color Matching

---

Resident within the magicolor 5440 DL's printer driver is an ICC-based color matching system that provides single-button controls for automatic correction of color files. Using built-in ICC profiles and an sRGB color space, this printer-resident system makes it as easy to get great color from a PowerPoint presentation as it is from a desktop publishing application such as QuarkXPress. Its color matching methods are simple for both inexperienced and professional color users to navigate.

When activated, users can choose from three different color rendering methods (Perceptual, Colorimetric, and Saturation) for three different page elements (images, graphics, and text).

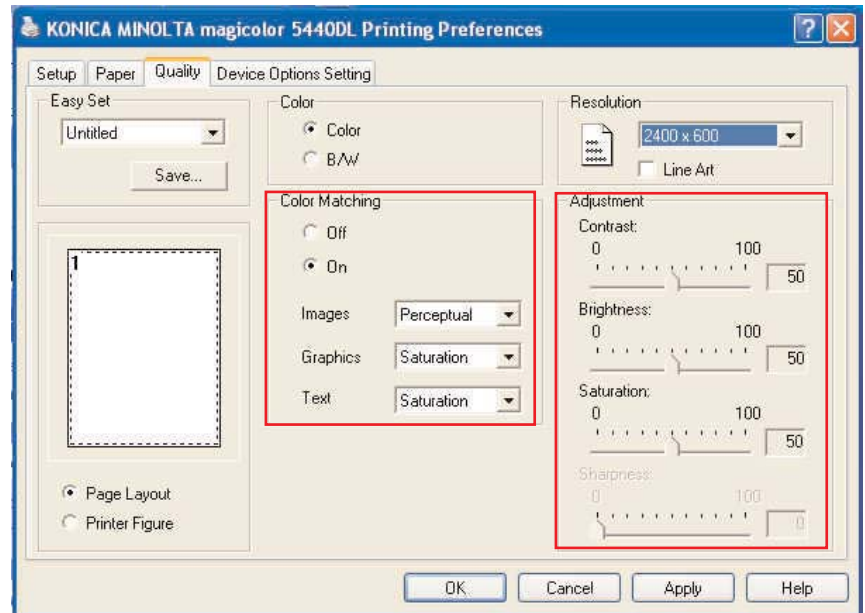
- Perceptual - this is an ideal selection when printing photographic images. It's tuned to enhance images for high-quality prints.
- Colorimetric - this is the best choice when printing solid colors, automatically making adjustments for consistent, predictable output.
- Saturation - when bright colors are needed for text and graphics, the Saturation selection is the right choice.

Consumers can also fine-tune color output with custom setting selections available through the printer driver. Changing image contrast, brightness, saturation, and sharpness is easy with convenient, slide-bar adjustments.



Driver-based color matching selections are convenient to access and use.

Fine tune output with slide-bar selections also in the driver.



## ICC Device Profiles

For hands-on color management, nine (9) ICC color profiles are included with the magicolor 5440 DL—three for each available resolution (2400 x 600 dpi, 1200 x 600 dpi, and 600 x 600 dpi), one for each rendering method (Perceptual, Colorimetric, and Saturation).

### ICC Profiles

- 2400 x 600 dpi — Perceptual
- 2400 x 600 dpi — Colorimetric
- 2400 x 600 dpi — Saturation
- 1200 x 600 dpi — Perceptual
- 1200 x 600 dpi — Colorimetric
- 1200 x 600 dpi — Saturation
- 600 x 600 dpi — Perceptual
- 600 x 600 dpi — Colorimetric
- 600 x 600 dpi — Saturation

Users printing with Windows ICM, Apple ColorSync, or through an application using ICC color matching will find the profiles helpful in adjusting color to meet their specifications. Most users of separate color matching software should choose the profiles that use Perceptual rendering.



## Enhanced Automatic Image Density Control (eAIDC)

From day to day, and from one consumable change to the next, toner density may change, ultimately affecting color consistency. To help maintain color consistency and ensure predictable color without user intervention, the magicolor 5440 DL automatically performs enhanced Automatic Image Density Control (eAIDC).

eAIDC occurs during these states:

- when the printer is turned on and a temperature or humidity change has occurred
- at every 10th power up
- after printing 200 continuous pages (calibrates at the end of the job)
- after a consumables change
- when requested from the front panel



*eAIDC means consistent color on every print.*





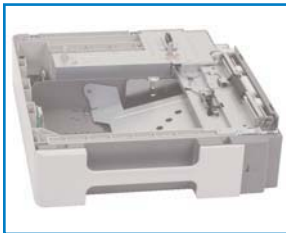
## Options & Accessories

*Configure the magicolor 5440 DL how you want it.*

The magicolor 5440 DL is flexible in design with these available options:



- ❑ **Automatic Duplexer:** The magicolor 5440 DL can perform manual duplexing by printing on one side of a page, turning it over and printing on the other side. For more convenient two-sided printing, an automatic duplexer is available. It installs on the right hand side of the printer and adds very little width to the system.



- ❑ **Lower Input Feeder:** A 500-sheet lower input feeder is available for the magicolor 5440 DL. Up to two feeders may be added, increasing input to the printer's capacity of 1,600 sheets. The feeders accept media up to legal size (8.5" x 14") and attach conveniently under the standard input cassette.



- ❑ **Memory:** The magicolor 5440 DL has one open DIMM slot that accepts up to 512 MB RAM available exclusively from KONICA MINOLTA. Memory is available in 128 MB, 256 MB, or 512 MB increments. This additional memory can improve the printer's performance, especially when used in a network environment with the optional duplexer or camera-direct photo printing feature installed.
- ❑ **Printer Cabinet:** A cabinet for convenient storage of media and supplies is available for the magicolor 5440 DL. The cabinet has a caster base which makes it easy to move the magicolor 5440 DL from place to place.
- ❑ **Camera-Direct Photo Printing Card:** This card activates the USB 1.1 port and direct print menu options, enabling the user to print pictures directly from a PictBridge-compatible digital camera.



**KONICA MINOLTA**

KONICA MINOLTA PRINTING SOLUTIONS U.S.A., INC.  
One Magnum Pass  
Mobile, AL 36618  
USA

[www.buymagicolor.com](http://www.buymagicolor.com)

## Free Manuals Download Website

<http://myh66.com>

<http://usermanuals.us>

<http://www.somanuals.com>

<http://www.4manuals.cc>

<http://www.manual-lib.com>

<http://www.404manual.com>

<http://www.luxmanual.com>

<http://aubethermostatmanual.com>

Golf course search by state

<http://golfingnear.com>

Email search by domain

<http://emailbydomain.com>

Auto manuals search

<http://auto.somanuals.com>

TV manuals search

<http://tv.somanuals.com>