



KONICA MINOLTA

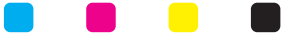
bizhub 
C351

More power, more productivity.



bizhub C351

Full Color Printer/Copier/Scanner/Fax. The power you want for high-volume to mid-volume document traffic. Fast output. Quality color. Cost-effective B&W. Built-in Emperon™ Print System. Even on-board PageScope™ software. Plus options to meet special needs – including professional color image control.



The essentials of imaging



Feel the power of bizhub OP.

Inside the bizhub C351, Konica Minolta's bizhub OP approach raises multifunctional productivity to the next level. New bizhub Architecture runs every function on one CPU and memory subsystem, improving performance, enhancing security and integrating device and account management. The Emperon Print System seamlessly integrates document output management with simple, consistent user interface. And bizhub Open API will soon allow custom integration with future third-party software to meet emerging business needs.

More flexibility to scan and share.

Looking for a B&W replacement? Look at color – and the bizhub C351. Yes, you can afford the cost. No, it won't slow down your workflow. And you'll have bizhub OP, with multifunctional efficiency to manage documents from a single central resource. In short, you'll have it all. No compromises – and no excuses.

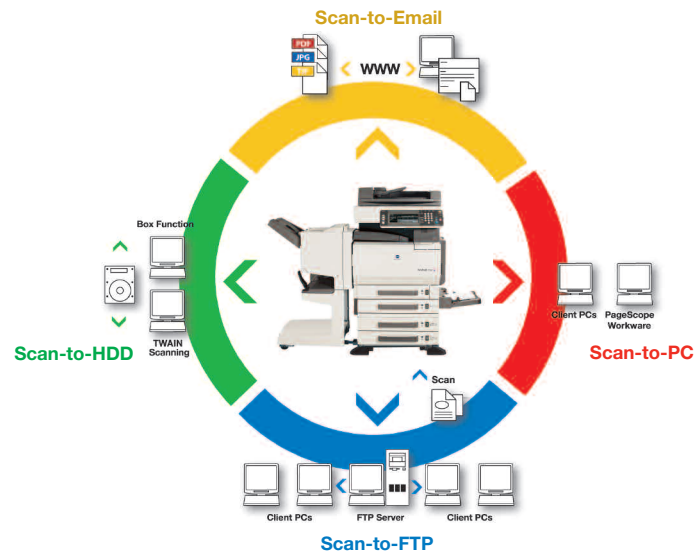


Section 508 compliance.

With big keys, clear menus, simple touch-screen interface and design that tilts in three positions for wheelchair access, the bizhub C351 is in full compliance with Section 508 – designed for easy access by individuals with disabilities. This philosophy extends to front-loading paper trays, convenient height and reach, adjustable display contrast, and accessible machine interiors for adding toner and replacing cartridges.

Guide the flow throughout your network.

Information in, documents out – with speed and flexibility to keep you ahead of the busiest traffic. You can print at up to 35 ppm, in both color and B&W. And scan at up to 38 opm, to move information faster and in more directions: Scan-to-Email, Scan-to-FTP, Scan-to-SMB (Scan-to-Desktop), Scan-to-HDD (Scan-to-User Box), TWAIN scanning. With SMTP Authentication, Email from the bizhub C351 can pass easily through ISP servers. There's also a high-speed, Super G3 fax option with advanced transmission and reception features. All to put you at the power center of your business – coordinating your input, connecting with co-workers, maintaining security and achieving your productivity goals.



All-in-one bizhub OP performance.

The C351 gives you a powerful central document resource with three important benefits for multifunctional productivity:



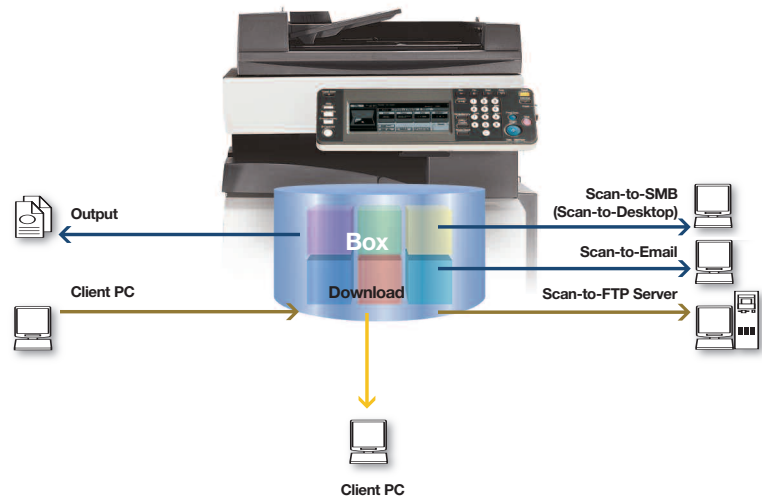
All-in-One bizhub Architecture
to improve performance, security and account management.

The Emperon™ Print System
to integrate fast document output with simple user interface.

New bizhub Open API
to allow custom integration with third-party software.

Scan, share, store and more.

When you Scan-to-HDD, you can store and access documents in secure User Box mailboxes on the built-in 40 GB hard disk drive of your bizhub C351. Konica Minolta leads the industry in User Box functionality, with Save, Print, Route, Move and Copy. You can create Compact PDF files that take up less space, for faster processing and distribution. You'll have a total HDD capacity of 1,000 User Boxes – and each can be password-protected and secured by User Authentication, Account Track and security enhancements to protect your information. (In evaluation for ISO-15408 compliance – Dec. 2005.) To help you control all that input/output power, you'll have PageScope Box Operator – just one of many PageScope software enhancements built into your bizhub C351.



Go anywhere your workflow takes you.

The bizhub C351 starts with your needs – and follows your dreams. To replace your existing B&W printer/copier, it's a fast, cost-effective solution that carries you into the digital age. For making the transition to color, it's an ideal combination of speed, quality and lower total cost of ownership. If you're moving up in color, an IC-402 Image Controller option gives you professional Fiery® color management and graphic arts functions. And if you're expanding in-house color production, options can provide a wide range of automated finishing capabilities. Anywhere your business takes you, you'll have a "right-size" solution that looks as good in your workplace as it does on your bottom line.

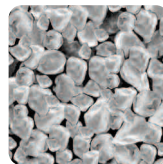
Simitri

Spectacular color quality.

Our exclusive Simitri® Color Polymerized Toner uses ultra-fine particles for sharper lines and clearer details. Your bizhub C351 also adds advanced technologies for spectacular color halftones, precision color accuracy and more consistent color output.



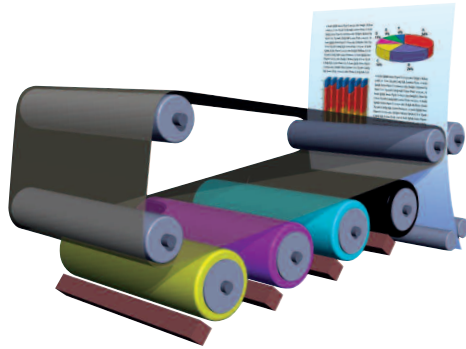
Simitri®



Pulverized

High-speed color.

With Tandem Processing, all four colors are applied on a single pass. The result is color print/copy output at the speed of B&W: up to 35 ppm, so your workflow never slows down.



Postcard Mode.

Produce vivid color or monochrome images on heavy-stock and glossy paper for direct-mail use.



The advantages of the Emperon Print System.

Your bizhub C351 won't require an ordinary print controller, because the Emperon Print System is already built in – with full print/copy productivity, including PCL 5e/5c, PCL6 and PostScript 3 emulation, multiple print drivers and connectivity protocols. In both Windows and Mac environments, you can print and finish with desktop point-and-click simplicity. And to help you manage job queues and reprint jobs faster, the bizhub C351 also gives you PageScope Job Spooler. You can change job order, adjust job settings, even execute multiple jobs simultaneously.

The speed, stock and capacity you need.

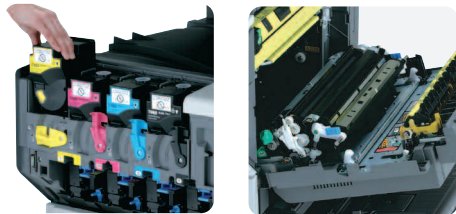
With the bizhub C351, you'll have speed, quality and workhorse performance – with a robust monthly duty cycle of up to 100,000 pages, to help maximize your uptime. Fast first-copy output speed of just 6.8 seconds in B&W keeps copier lines to a minimum. You'll have the capability to load up to 140 lb. index stock in all drawers and automatically duplex 140 lb. stock. You can print on coated stock, OHP transparencies and envelopes – even output 11" x 17" full-bleed originals on 12" x 18" paper, preserving borders and crop marks. With 3,400-sheet total capacity (with options), you can work longer without reloading. Add the optional 100-sheet Auto Document Feeder, and you can scan hard-copy documents more quickly and easily.

More capability to print and finish.

The world is moving to color – printing in color, in-house and on-demand, because color communicates more effectively. In presentations and human resource documents, newsletters and brochures, reports and announcements, the bizhub C351 makes high-quality color easy and affordable – for offices, big and small. Finance. Manufacturing. Real estate. Healthcare providers. Schools, churches, retail locations and a broad spectrum of cost-conscious applications.

Easy-access.

Changing toner is simple and clean, because toner bottles are easily accessible. So is the paper path, to quickly clear misfeeds and maximize uptime.



Finishing power for on-demand printing.

In-house productivity depends on fast, efficient finishing – to output documents that don't have to be sorted, punched, stapled or folded by hand. So the bizhub C351 gives you all the auto-finishing options you need. With the optional FS-507 Staple Finisher, 2/3-hole punching is built in. And with the optional FS-603 Booklet Finisher, you'll have the power to produce 60-page booklets, saddle-stitched and center-folded. Because you're printing in-house, you can also revise and reprint as often as necessary – and only print as many documents as you need, to eliminate the waste of costly overruns or obsolete printed inventories that have to be tossed out.



Advanced Grouping/Sorting



Multi-Position Stapling



2/3-Hole Punching



60-Page Booklet-Making



Auto Duplexing



12" x 18" Full-Bleed Printing



Auto Document Feeder Option ①

DF-601 with 100-sheet capacity and smooth, quiet operation.

Tilting Control Panel ②

Improves access from any angle, with bigger keys and simple menus.

Standard Duplexing ③

Automatically outputs 2-sided copies and prints to save paper.

Booklet Finisher ④

FS-603 center-folds and saddle-stitches up to 60-page booklets.

Standard Paper Feed Cabinet ⑤

Universal Multi-Purpose Cassette holds up to 250 sheets and standard Universal Drawer holds up to 500 sheets – both supporting weights up to 140 lb. index.

Dual Paper Feed Cabinet ⑥

PC-202 holds up to 1,000 sheets and supports weights up to 140 lb index, in two 500-sheet universal drawers.

Manual Bypass ⑦

150-sheet capacity, in paper weights up to 140 lb. index.

Large Capacity Tray ⑧

2,500-sheet LCT supports weights up to 140 lb. index and raises your maximum paper capacity to 3,400 sheets.

Job Separator Tray ⑨

JS-601 lets you separate prints, copies, or faxes for easy retrieval (for FS-507 only).

Punch Kit ○

PK-501 adds 2/3-hole punch capacity to your Booklet Finisher.

Paper Feed Cabinet/Drawer ○

PC-102 holds up to 500 sheets and supports weights up to 140 lb. index, with extra storage drawer.

Staple Finisher ○

FS-507 lets you sort, group, and multi-position staple documents – with built-in 2/3-hole punching.

Standard Hard Disk Drive ○

40 GB HDD for scanning and saving documents in User Boxes.



Not Shown = ○



Color to match professional requirements.

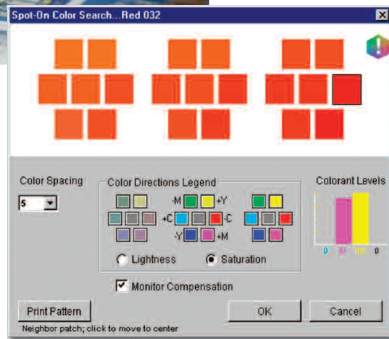
With its own built-in Print System, the bizhub C351 handles all your everyday color printing needs. Need more? Add an IC-402 Image Controller option, and take advantage of the industry's most sophisticated system for in-house color production. Fieri ColorWise Pro Tools can work in any color space, control RGB and CMYK independently, edit simulations and output profiles. EFI® Impose lets you preview, edit and assemble documents more quickly. And Fieri's Command Workstation™ interface lets you control job functions from remote PCs, preview thumbnails and full-screen color images, maintain and update archives, create job logs and more – all customized to suit your workflow.

More expertise to manage and control.

In color, the bizhub C351 is a real pro. With professional options for simple color management and accurate color matching, including the ability to simulate offset presses and paper stock. Plus powerful software enhancements to manage document files more easily – even scan and distribute documents in a single step.



Spot-On Color Matching allows you to match colors accurately and consistently – and comes standard on the IC-402 Image Controller.

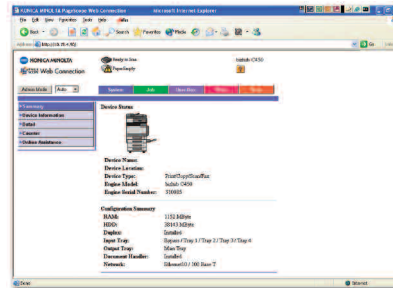


More ways to get your color right.

Spot-On Color Matching is standard with the IC-402 Image Controller, so you can accurately adjust colors, match samples, and maintain consistent output. You can also add Fieri Graphic Arts Options, with Auto Trapping and Hot Folders – for the exact capabilities and enhancements you need to take control of your color workflow. There's an EFI Color Profiler Kit option that helps you match any color using a simple hand-held spectrometer to measure precise color values. Fieri NetWise® architecture provides seamless connectivity on all popular networks, with automatic IP configuration and peer-to-peer support. And Fieri WebTools™ allows you to manage print jobs more quickly and efficiently through any Java-enabled web browser.

PageScope puts it all together.

Speaking of networking, a stand-alone printer/copier can't satisfy today's productivity demands. So with the bizhub C351, you're connected right out of the box – with PageScope Web Connection, for web-based device setup and status check. PageScope Net Care and PageScope Network Setup, for managing multiple devices from a single desktop PC. PageScope Data Administrator™, for importing one-touch Email and fax addresses from LDAP systems and maintaining uniform security data. And PageScope EMS Plug-Ins and PageScope NDPS Gateway, for interface with enterprise and distributed printing environments.



A website for your bizhub.

PageScope Web Connection makes it easy to monitor status, adjust print settings, display detailed information, review meter counts, set one-touch addresses for scanned data.

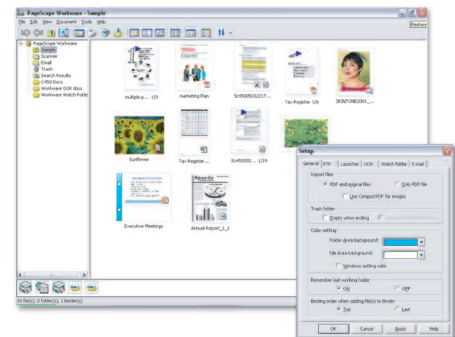


Managing documents with ease.

The bizhub C351 also has a better way to find, retrieve and share your files: optional PageScope Workware*. It lets you view documents as thumbnail images, drag-and-drop to share or print, and search your files by filename, date, tags, even a combination of criteria – or perform full-text search on documents that have been OCR-converted. And PageScope Router is a valuable PageScope option that automatically route scanned files to unlimited destinations. You can scan and distribute in a single step, convert file formats on the fly, even use automatic archiving to preserve document histories and paper trails. And that's important – because the faster your information moves, the more productive your workflow can be.

No more confusing filenames.

With optional PageScope Workware*, you can manage all your files more easily – view documents as thumbnail images, search and retrieve information more quickly, and print or distribute with drag-and-drop speed.





bizhub C351



© 2005 KONICA MINOLTA BUSINESS SOLUTIONS U.S.A., INC. All rights reserved. Reproduction in whole or in part without written permission is prohibited. Konica Minolta and The essentials of imaging are trademarks of KONICA MINOLTA HOLDINGS, INC. bizhub, Emperon, PageScope, Workware, and Data Administrator are trademarks of KONICA MINOLTA BUSINESS TECHNOLOGIES, INC. Simitri is a registered trademark of KONICA MINOLTA BUSINESS SOLUTIONS. All other brands and product names are registered trademarks or trademarks of their respective owners.

Design & specifications are subject to change without notice.

* Some functions may require options, which may or may not be available at time of launch.

bizhub C351



KONICA MINOLTA BUSINESS SOLUTIONS U.S.A., INC.
100 Williams Drive
Ramsey, NJ 07446
www.kmbs.konicaminolta.us
www.konicaminolta.us/solutions

TYPE:
Full-Color Printer/Copier/Scanner With Stationary Platen

PRINT/COPY PROCESS: Tandem Process

TONER TYPE:
Simitri® Color Polymerized Toner

MONTHLY DUTY CYCLE: 100,000 pages

PRINT/COPY SPEED:
Full color: 35 ppm (letter, portrait)
B & W: 35 ppm (letter, portrait)

SCAN SPEED: Up to 38 opm

PRINT/COPY RESOLUTION:
600 x 600 dpi
600 x 1800 dpi (enhanced resolution)

GRADATION: 256 color shades per pixel

ORIGINAL SIZE:
Up to 11" x 17" (scanning/copying)
Up to 11" x 17" full-bleed on 12" x 18" paper (printing)

COPY SIZE:
Multi-Purpose Cassette: 4" x 6" to 12" x 18"
Universal Cassette: 5-1/2" x 8-1/2" to 11" x 17"
Multiple Bypass: 4" x 6" to 12" x 18"

WARM-UP TIME: Less than 99 seconds

FIRST COPY:
Full color: less than 8.5 seconds (letter)
B & W: Less than 6.8 seconds (letter)

COPY QUANTITY: 1 - 999

MAGNIFICATION:
Zoom range: 25% - 400%, 0.1% increments
Preset reduction: 79%, 73%, 65%, 50%
Preset enlargement: 121%, 129%, 155%, 200%

COLOR MODES:
Auto Color, Full Color, Black & White, 2-Color, Single Color

COPY EXPOSURE MODES:
Text (legible text)
Text/Photo (clear text and halftones)
Photo (optimized for gradations)
Map (fine edges and legible text)
Dot Matrix (dot matrix originals)
Copied Paper

FAXING (with fax option):
Super G3 compatibility
33.6 Kbps modem speed
F-Code support

FAX TRANSMISSION SPEED:
Approximately 2 seconds/page

FAX EXPOSURE MODES:
Text, Text/Photo, Photo, Dot Matrix

PAPER SUPPLY:
250-sheet multi-purpose cassette (16 lb. bond to 140 lb. index)
500-sheet universal cassette (16 lb. to 140 lb. index)
150-sheet bypass (16 lb. bond to 140 lb. index)

MAXIMUM PAPER CAPACITY:
3,400 sheets (total, with options)

DOCUMENT FEEDER:
DF-601 Automatic Document Feeder (Optional)
Paper Capacity: 100 sheets
Paper Size: 5-1/2" x 8-1/2" to 11" x 17"
Paper Weight:
Single-sided: 10 lb. bond to 110 lb. index
Double-sided: 13 lb. bond to 28 lb. bond

POWER REQUIREMENTS: 120 V, 60 Hz

POWER CONSUMPTION: Less than 1.5 kW

DIMENSIONS (W x D x H):
27-3/4" x 30" x 30-1/4"
(standard configuration)

WEIGHT: 244-1/2 lbs.

OPTIONS:
DF-601 Automatic Document Feeder
DK-501 Copy Desk
EK-702 Parallel/USB 2.0 I/F Kit
FK-502 Super G3 Fax Board
FS-507 Staple Finisher
FS-603 Booklet Finisher
IC-402 Fiery® Image Controller
JS-601 Option Tray
(for FS-507 Staple Finisher)
MC-501 Mechanical Counter
MK-703 Enhanced Option Connection
MK-704 Fax Connection Kit
OC-501 Original Cover
PC-102 Paper Feed Cabinet (500 sheets)
PC-202 Paper Feed Cabinet (500 sheets x 2)
PC-402 Large Capacity Tray (2500 sheets)
PK-501 Punch Kit
(for FS-603 Booklet Finisher)
VI-502 Video Interface Kit (for IC-402)
Key Counter Kit

Available Print/Copy Functions*

Account Track (1,000 Accounts)
APS/AMS
Auto Duplex
Auto Reset
Auto Tray Switching
Bi-Directional Communication (Device Option Setting)
Box Function (Store Copy Jobs, Print Jobs, Scans, Fax Data, Print Stored Data, Route Scanned Data)
Color Modes & Functions
Auto Color/Full Color
Black & White Mode
Single Color Mode
2-Color Mode
Color Adjustments (Brightness, Contrast, Saturation, Sharpness, Red, Green, Blue, Portrait, Hue Density, Color Balance, Copy Density)
Copy Modes (Simplex/Duplex, 2-in-1, 4-in-1, 8-in-one, Book, Booklet, Booklet + Bind)
Cover Mode
Creative Functions (Mirror Image, XY Zoom, Image Centering, Base Color, Negative/Positive Reverse, Image Repeat)
Criss-cross Sorting
Distribution Number Printing
Energy Save Mode
Enlarge Display
Erase (Border, Frame, Edge) Mode
Finishing (Group, Sort, Staple, Punch, Center-Fold, Center-Staple)
Form Overlay
Glossy Mode
HDD Random Erase
Image Adjustments (Color Matching, Pure Black Auto ON/OFF, Color Balance, Screen Setting, Image Smoothing ON/OFF)
Image Density Adjustments (Density, Background Removal)
Image Preview (Job Finishing Image Display, Engine Configuration Display)
Interrupt
Job Erase
Job List
Job Reserve
LDAP
OHP Interleaving
Mixplex, Mix-Media
Paper Size Selection (APS, Manual)
Paper Type Selection (Normal, Thick 1, Thick 2, Thick 3, OHP)
Program/Recall Jobs
Proof Print
Secure Printing

Available Print/Copy Functions Continued*

Separate Scan
Sleep Mode
Text Enhancement
User Authentication (Synchronize with Account Track)
Utility (Meter Count, Environment Setting, Default Setting, One-Touch Setting, Check Consumable Life, Admin. Mode)
Watermarks
Zoom Selection (AMS, Fixed Zoom Ratio, User Programmable Zoom Ratio, Manual)

Available Scan Functions*

Scan-to-Email
Scan-to-FTP
Scan-to-SMB (Scan-to-Desktop)
Scan-to-HDD (Scan-to-User box)
TWAIN Scanning

Available Fax Functions*

Autodialing (2,000 one-touch keys)
Auto Memory Reception
Auto Reduction Printing
Border Erase Transmission
Broadcasting (maximum 600 locations)
Bulletin Board
Density Adjustment
Duplex Transmission/Reception
Exposure Mode (Text, Text/Photo, Photo, Dot Matrix)
Group Dialing (up to 500 one-touches per group)
Image Rotation Transmission/Reception
Mailbox (Private) Transmission/Reception
Memory/Quick Dial
Mix Originals Transmission
Original Size Designation
Overseas Transmission
Password Transmission/Reception
PC Fax
Polling Transmission/Reception
Priority Transmission
Print Setting for Overnight Reception
Program Dialing (400 programs)
Redial
Relay Broadcasting
Relay Transmission
Remote Reception
Secure Printing
Telephone/Fax Auto Transfer
Timer Transmission

Emperon Print System:

PROCESSOR:
600 MHz

RAM:
512 MB (shared scan and copier memory)

HARD DISK DRIVE:
40 GB (shared scan and copier HDD)

PAGE DESCRIPTION LANGUAGE:
PCL 5e/5c Emulation
PCL6 (XL version 2.1) Emulation
PS3 Emulation

TONER:
PCL Resident Fonts: 80 outline + 1 bitmap
PS3 Emulation Resident Fonts: 136 outline

PRINT DRIVERS:
PCL6:
Windows 98 SE/ME (PPD files)
2000, XP, 2003 (Print Driver)
NT 4.0 (Print Driver)
PS3:
Windows 98 ME (PPD file)
2000/XP/2003 (Print Driver)
NT 4.0 (Print Driver)
Mac OS 9.2 or later, OS X version 10.2 and Mac OS X 10.3 (PPD files)
TWAIN Driver:
Windows 98SE/ME, 2000/XP, NT 4.0 SP6

Emperon Print System: Continued*

INTERFACE:
Ethernet 10/100 BaseT
Parallel IEEE 1284/USB 1.1, 2.0 (optional)

PROTOCOLS:
TCP/IP, IPX/SPX, AppleTalk (EtherTalk), LPR, SMB, LPD, Netware (4.x, 5, 6), Pserver N Printer, NDPS, IPP, SMTP, POP3, LDAP, SSL, SNMP, HTTP 3.0

PAGESCOPE APPLICATIONS:
Network & Device Management
PageScope Box Operator
PageScope Data Administrator
PageScope EMS Plug-Ins
PageScope Job Spooler
PageScope NDPS Gateway
PageScope Net Care
PageScope Network Setup
PageScope Web Connection
PageScope Workware* (optional)

IC-402 Embedded Fiery Print Controller (option):

PROCESSOR:
Intel® Celeron® 2.0 GHz

OPERATING SYSTEM:
Linux

HARD DISK DRIVE:
40 GB

MEMORY:
256 MB (standard)
512 MB (maximum)

PAGE DESCRIPTION LANGUAGE:
PCL 6, Adobe PostScript 3 (3016)

TONER:
PostScript Fonts: 136
PCL Fonts: 45

PRINT DRIVERS:
Windows 98 SE/ME, 2000, XP, NT 4.0
Mac OS 8.6, 9.x
Mac OS X 10.1 and 10.2 (classic mode only)
Mac OS 10.2.4 and later (native mode)

INTERFACE:
Parallel IEEE 1284
10/100 BaseT
RJ45
USB 2.0

PROTOCOLS:
TCP/IP (Static IP, Auto IP, DHCP/BOOTP), LPR, SMB, IPX/SPX (NDS), AppleTalk (EtherTalk) HTTP, SNMP, IPP, Port 9100, SMTP, POP3, LDAP, SSL/TLS

UTILITIES:
ColorWise® Pro Tools 3.0
Command Workstation™ 4.2 (for Windows)
Command Workstation™ LE (for Mac OS 10.2.4 and later)
Fiery® Downloader™
Fiery® Spooler™
Fiery® WebTools™
Spot-On Color Matching (standard)

OPTIONS:
256 MB Memory (upgrade, IC-402)
EFI™ Impose
EFI Densitometer (ED-100)
Graphic Arts Options (Hot Folders, Auto Trapping)
EFI Color Profiler Kit (ES-1000 spectrophotometer with monitor profiling software)

Item #: C351BRO



Your Preferred SHARP and KONICA MINOLTA Distributor

Free Manuals Download Website

<http://myh66.com>

<http://usermanuals.us>

<http://www.somanuals.com>

<http://www.4manuals.cc>

<http://www.manual-lib.com>

<http://www.404manual.com>

<http://www.luxmanual.com>

<http://aubethermostatmanual.com>

Golf course search by state

<http://golfingnear.com>

Email search by domain

<http://emailbydomain.com>

Auto manuals search

<http://auto.somanuals.com>

TV manuals search

<http://tv.somanuals.com>