



KONICA MINOLTA

# bizhub PRESS C70hc



**High Chroma,  
add vividness to your work.**

**E**xtr**e**m**e**

**V**ivid

**N**atural

**V**ersatile

**I**ntelligent

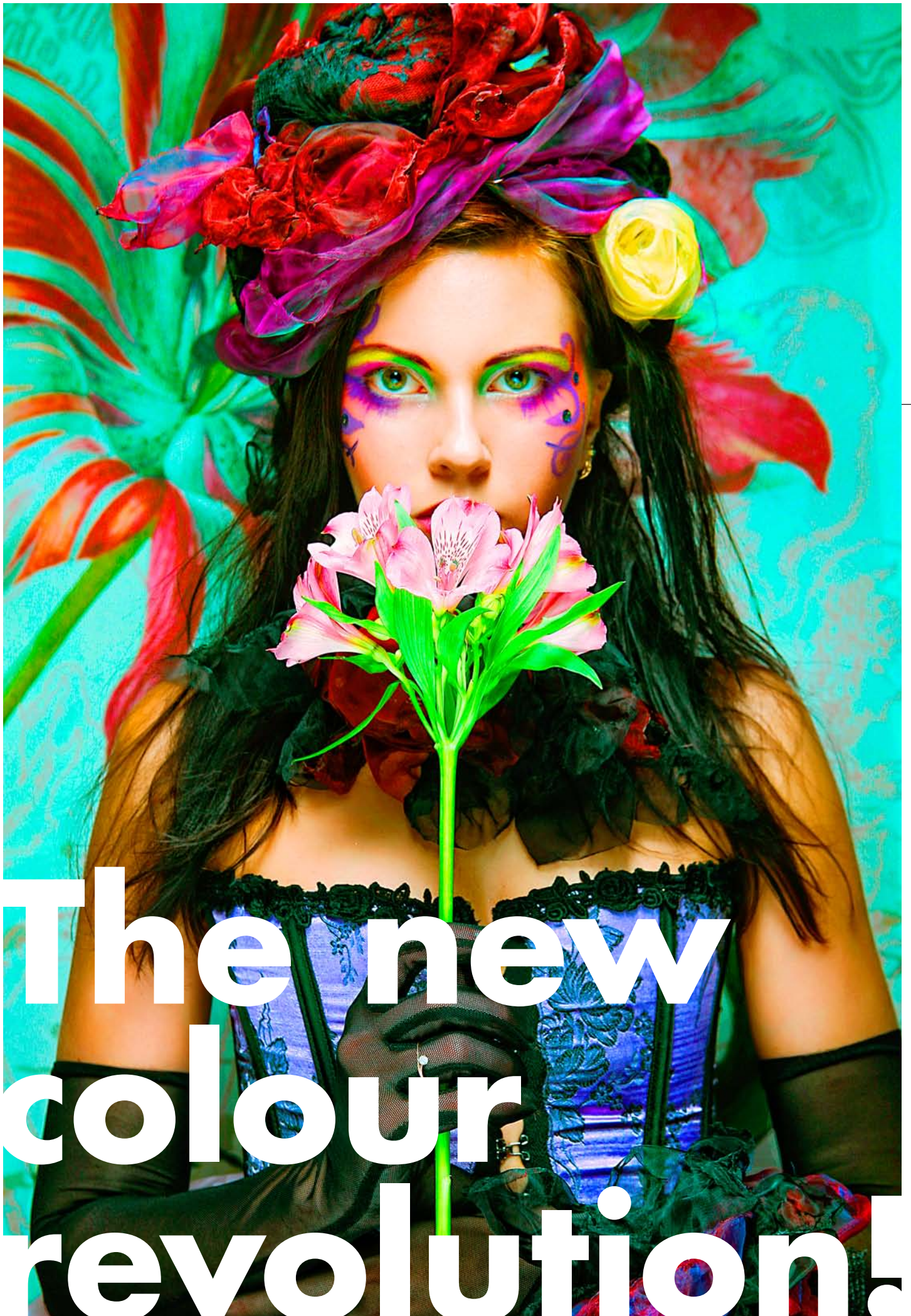


A4 Black and White **71** pages/min  
A4 Full Colour **71** pages/min

\*Printing speed may vary according to the paper weight.

Giving Shape to Ideas





# The new colour revolution.



# Extreme

This colour reproduction is unmatched.

The only resource for the highest level in colour reproduction.

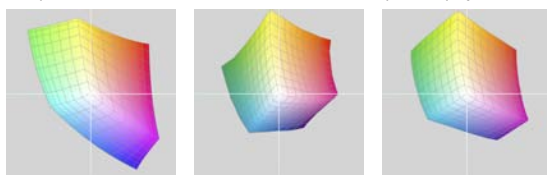
Superior high chroma toner also for spot colour reproduction.

Colour gamut with a close match to the sRGB

Konica Minolta's unique new "Simitri HD toner" offers a more enhanced chroma. The colour gamut is a closer match to the sRGB, providing a specialized toner to support the high chroma printer. This toner can now reproduce vivid colours on paper that could not be printed before, even when the monitor displayed the colours accurately. In addition, the post-print drying process is not necessary because it is a dry toner. As a result, this contributes to a faster turnaround time for printing.

**Simitri HD**  
High Definition Polymerized Toner

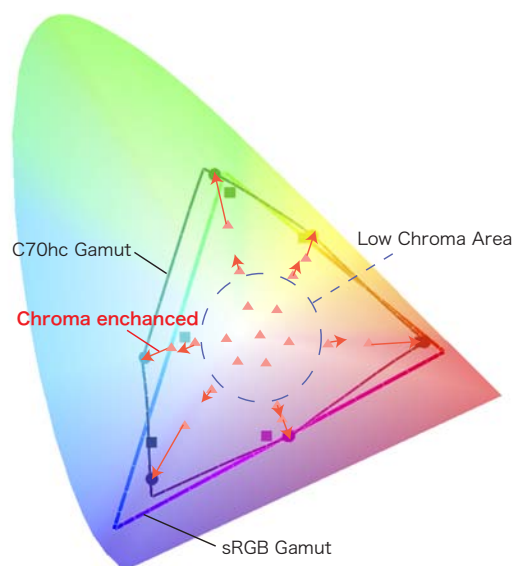
Comparison of the L\*a\*b coordinates for the colour space display



sRGB monitor

Conventional printer

C70hc



Chroma focused algorithm frame format on an x, y plane.

High chroma printing that can reproduce spot colours with only four default colours

With extremely clear colour quality, the high chroma tone makes it also possible to reproduce those difficult "spot colours" by only using the four default colours. No special toner or specific expertise is required. Specified colour reproduction, for packaging, POP, logos, etc., plays a key role to help you show off your design work ability.

Certification for Pantone colour compliance is currently in evaluation.



Vivid and Natural.

Each holds the power to captivate you right away.

# Vivid

Vivid mode. High chroma that captivates you.

Vivid colours in the high chroma gamut, that could not be reproduced using conventional printing methods, can now be reproduced utilizing the wide color range of the four colours offered by the high chroma toner. This colouring not only yields a tremendous impact, but its captivating feature has a powerful effect with sales promotion tools, such as the highly visible POP.

[Vivid mode for RGB profile]:

Emphasises the vividness by maximizing the strengths of the high chrome toner.

[Vivid mode for CMYK profile]:

Produces sharp hues that have a strong impact even in CMYK output.



# Natural

Natural mode. Natural finish.



Maximizes new image processing technology [S.E.A.D.II] and high precision colour management to support high quality and stability of image. With CMYK output that focuses on a natural finish, the high quality that can nearly equal to offset printing is now a reality.

[Natural mode for RGB profile]:

Reproduces a colouring transparency close to the monitor image.

[Natural mode for CMYK profile]:

True colour reproduction is possible like in offset printing.



CMYK Data



# Versatile

Equipped with various functions to improve printing satisfaction.

#### High speed full colour printing, up to 70 pages per minute

With a 70 page per minute rate (Full colour: A4, horizontal), this high speed has an edge even with printing on demand. High productivity and colour reproduction bring you high-value added business.

#### Support on all trays for A3 full crop mark output

Supports various sizes from 100 × 148 mm up to 330 × 487 mm (Maximum printable range: 318 × 480 mm) A3 output with full crop marks and double sided A4 output with crop marks are also possible.

#### Switch between screens

It is possible to switch between the dot screen and line screen outputs. You can select the screen that best fits each job.

#### Stable paper handling

The standard model is equipped with a mechanical de-curler that eliminates curls and waves on the paper after printing. As an option, the ICE (Intercooler- Curl Eliminator) system is also available which not only reduces curling but static electricity build up as well.

#### Various finishing options

High-value added in-line options are available such as side binding /centre binding units, multi folding units, perfect binding units, multi punch units, etc.

#### Density sensor for colour consistency

The IDC (Image Density Control) sensors read patches of CMYK on the intermediate transfer belt. Depending on the result, maximum densities and halftone densities are adjusted, and colour consistency is achieved from the first page to the final page.

#### Operator assistance for self-maintenance

Operator assistance is provided as part of our maintenance service [O.R.U.M.] to help you carry out self-maintenance. You can minimize your down-time because there is no need to wait for a service engineer.

\*Not available in some areas.





Offering a controller to maximize a potential beyond commonplace.

## IC-601 NEW

With our own product development, we offer high compatibility with the C70hc.

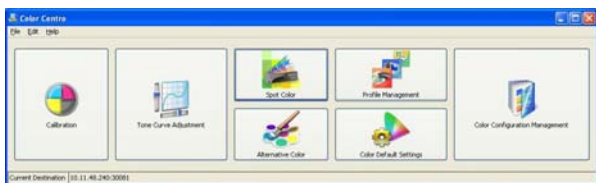
Achieving high quality printing unavailable anywhere else

Standard with an exclusive printer profile for the C70hc to maximize its colour reproduction capability.

Standard with an exclusive printer profile for the C70hc to maximize its colour reproduction capability. The IC-601 comes equipped with a printer profile specifically for the C70hc as standard, and performing optimized image mapping is possible for the input data colouring. It manipulates the printer's colour reproduction to its full extent. For example, if you select the RGB vivid mode, it focuses on high chroma, and if you select the CMYK natural mode, it switches to a high quality mode that is in line with offset printing.

The colour management utility offers a myriad of functions to manipulate the colouring.

Konica Minolta's unique utility [ColorCentro] improves the colour reproduction accuracy even further, and features smooth operability for fine colour management. A wealth of functions are available such as profile creation wizard, colour configuration management, etc.



By being linked to the unit's operation panel, enjoy job management with more efficiency.

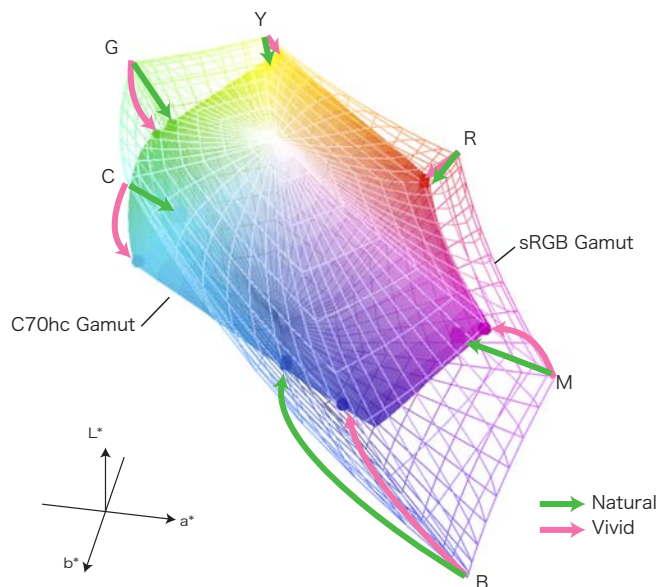
Job management and editing can be performed on the unit's operation panel. It offers you improved work efficiency and high operability.



Job list screen



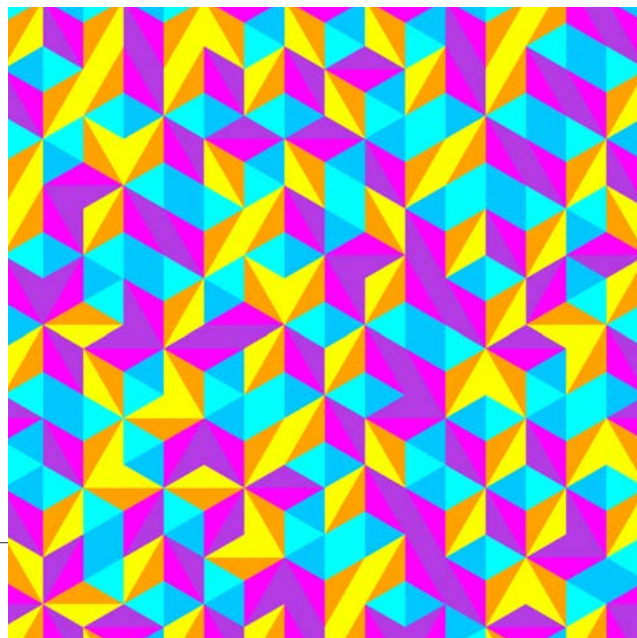
Job ticket editing (Colour balance) screen



Optimizes mapping for use with the C70hc engine colour gamut.

Adjusts the mapping pattern in a different mode for colours outside the gamut.

# Intelligent



## bizhub PRESS C70hc General Specifications

Model Name	bizhub PRESS C70hc	
Type	Console	
Colour Support	Full colour	
Resolution	1,200 (3,600 equivalent) x 1,200dpi	
Memory	DIMM	512MB x 6
	HDD	160GB x 6 SATA (option)
Gradation	256	
Paper Size	SRA3, A3, B4, SRA4, A4, SRA4S <sup>1</sup> , A4S <sup>1</sup> , B5, B5S <sup>1</sup> , A5S <sup>1</sup> , 12" x 18", 11" x 17", 8.5" x 11", irregular sizes (330 x 487 to 140 x 182mm)	
Image Loss	4mm or less for top edges, 4.5mm or less for bottom edges, 3mm or less for right/left edges	
Warm-up Time	420 sec. or less	
First Copy Time (A4)	Colour: 7.6 sec. or less B/W: 5.9 sec. or less	
Print Speed*1 (A4/Letter)	Colour: 71/70ppm B/W: 71/70ppm	
Paper Capacity	Standard 1,500 sheets (80 g/m <sup>2</sup> )	
Paper Weight*2	64-300 g/m <sup>2</sup>	
Multiple Print	1 to 9,999 sheets	
Auto Duplex	Standard	
Power Requirement	220-240V 20A (50-60Hz)	
Power Consumption	Less than 4.6kW	
Dimensions [W] x [D] x [H]*3	760 x 992.7 x 1,075.6mm (30" x 39" x 42-1/4")	
Weight	353kg (778-1/2 lb.)	

\*1 Printing speed may vary according to the paper weight. \*2 Main body trays: 64 to 256g/m<sup>2</sup> \*3 S: Short edge feed  
 \*\* Excluding control panel and output tray. Including back side duct.

## Print Controller Specifications

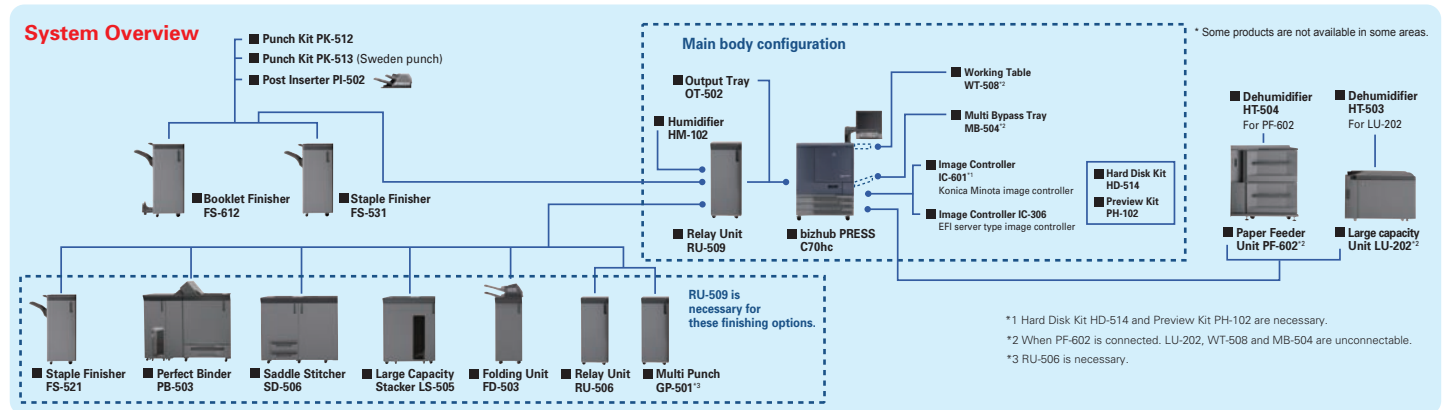
Model	Fiery IC-306	IC-601*	Kodak IC-307
Type	Server	Embedded	Server
CPU	Core 2 Quad Q9400 2.66 GHz	Core 2 Duo 2.8GHz	Core i7-860 Quad Core, 2.80 GHz
Memory	2GB	4GB	5GB (System Memory: 2GB Image Memory: 3GB)
HDD	160GB SATA	250GB x 2 SATA	500GB x 4 SATA2
Print Speed	Same as engine print speed	Same as engine print speed	Same as engine print speed
Print Resolution	1,200 (3,600 equivalent) x 1,200dpi	1,200 (3,600 equivalent) x 1,200dpi	1,200 (3,600 equivalent) x 1,200dpi
PDL	PostScript3 CPSI3017 PDF1.7 PPML VPS	PostScript3 CPSI3019 PDF1.7 TIFF, PPML, PCL5c/6, XPS	PostScript3, CPSI3017, PDF library9.0, PPML
Protocol	TCP/IP, SNMP, IPP, FTP, SMB, AppleTalk (EtherTalk), Bonjour	TCP/IP, IPX/SPX, Net BEUI, AppleTalk (EtherTalk), IPP, WSD	TCP/IP, SMB, LPR, Bonjour
Operating System	Windows 2000 Windows XP Windows Server 2003 Windows Vista Windows 7 Windows Server 2008 MacOS X 10.3.9 or later	Windows 2000 Windows XP Windows Server 2003 Windows Vista Windows 7 Windows Server 2008 MacOS X 10.3.9 or later	Windows XP Windows Server 2003 Windows Vista Windows 7 Windows Server 2008 MacOS X 10.3.9 or later
Fonts	Adobe PostScript fonts: 136 fonts	Adobe PostScript fonts: 136 fonts PCL 81 fonts	PostScript fonts: 207 fonts
Interface	10/100/1000Base-T	10/100/1000Base-T	10/100/1000Base-T
Dimensions	212 x 488 x 482mm (8-1/2" x 19-1/4" x 19")	412 x 114 x 402mm (16-1/4" x 4-1/2" x 16")	180 x 445 x 596mm (7.1" x 17.5" x 12.9")

\*Hard Disk Kit HD-504 and Preview Kit PH-102 are necessary.

## System Options

RU-509 Relay Unit	Type	Conveyor unit with decurl function
	Paper Size	SRA3, A3, B4, SRA4, SRA4S <sup>1</sup> , A4, A4S, B5, B5S, A5, A5S <sup>1</sup> , B6S <sup>1</sup> , A6S <sup>1</sup> , wide sizes, tabs, irregular sizes (331 x 488 - 95 x 139 mm)
PF-602 Paper Feeder Unit	Paper Weight	64 - 300g/m <sup>2</sup> (reverse feeding: 64 - 256g/m <sup>2</sup> )
	Upper Tray	3,000 sheets max. (B6 - SRA3, irregular sizes); 64 - 256g/m <sup>2</sup>
LS-505 Larger Capacity Stacker	Lower Tray	3,000 sheets max. (Postcard - SRA3, irregular sizes); 64 - 300g/m <sup>2</sup>
	Capacity	5,000 sheet stacker (main tray), 200 sheet (sub-tray)
FD-503 Folding Unit	Paper Sizes	Straight/shift mode: SRA3, A3, B4, SRA4, SRA4S <sup>1</sup> , A4, A4S <sup>1</sup> , B5, B5S <sup>1</sup> , A5, A5S <sup>1</sup> , B6S <sup>1</sup> , A6S <sup>1</sup> ; wide sizes, tabs, irregular sizes (331 x 488 - 95 x 139 mm)
	Paper Weights	50 - 244g/m <sup>2</sup> (50 - 300g/m <sup>2</sup> in sub-tray)
SD-506 Saddle Stitcher	Punch Types	2-hole punch, 4-hole punch
	Fold Types	Centre fold, letter fold-in, letter fold-out, double parallel, Z-fold, gatefold
	Paper Sizes	2-hole punch: SRA3, A3, B4, SRA4, SRA4S <sup>1</sup> , A4, A4S <sup>1</sup> , B5, B5S <sup>1</sup> Folding mode: A3, B4, SRA4S <sup>1</sup> , A4S <sup>1</sup> Post insertion mode: SRA3, A3, B4, SRA4, SRA4S <sup>1</sup> , A4, A4S <sup>1</sup> , B5, B5S <sup>1</sup> Straight mode: SRA3, A3, B4, SRA4, SRA4S <sup>1</sup> , A4, A4S <sup>1</sup> , B5, B5S <sup>1</sup> , A5, A5S <sup>1</sup> , B6S <sup>1</sup> Sub tray mode: SRA3, A3, B4, SRA4, SRA4S <sup>1</sup> , A4, A4S <sup>1</sup> , B5, B5S <sup>1</sup> , A5, A5S <sup>1</sup> , B6S <sup>1</sup> , A6S <sup>1</sup>
	Paper Weights	Punch mode: 64 - 216g/m <sup>2</sup> Folding mode: 64 - 130g/m <sup>2</sup> (Centre fold/Internal three-fold/External three-fold/Z-fold) 64 - 91gm <sup>2</sup> (Double parallel/Gatefold) Post insertion mode: 50-300g/m <sup>2</sup>
	Paper Sizes	Straight mode/Sub tray mode: 64-300g/m <sup>2</sup> Saddle stitching/trimming/multi-centre fold: SRA3, A3, B4, SRA4S <sup>1</sup> , A4S <sup>1</sup> , B5S <sup>1</sup> Multi-letter fold: A4S <sup>1</sup> Sub-tray: SRA3, A3, B4, SRA4, SRA4S <sup>1</sup> , A4, A4S, B5, B5S, A5, A5S, B6S, A6S, Postcard, irregular sizes, tabs
	Paper Weights	Saddle stitching & trimming: 50 - 244g/m <sup>2</sup> Multi-centre fold: 50 - 244g/m <sup>2</sup> Multi-letter fold: 50 - 91gm <sup>2</sup> Sub-tray: 50 - 300g/m <sup>2</sup>
	Max. Sheet Cutting	50 sheets x 2 (80g/m <sup>2</sup> )
	Paper Sizes	Staple mode: SRA3, A3, B4, SRA4, SRA4S <sup>1</sup> , A4, A4S <sup>1</sup> , B5, B5S <sup>1</sup> , A5, A5S <sup>1</sup> , B6S <sup>1</sup> Straight mode: SRA3, A3, B4, SRA4, SRA4S <sup>1</sup> , A4, A4S <sup>1</sup> , B5, B5S <sup>1</sup> , A5, A5S <sup>1</sup> , B6S <sup>1</sup> Sub tray mode: SRA3, A3, B4, SRA4, SRA4S <sup>1</sup> , A4, A4S <sup>1</sup> , B5, B5S <sup>1</sup> , A5, A5S <sup>1</sup> , B6S <sup>1</sup> , A6S <sup>1</sup>
	Paper Weights	Staple mode: 64-244g/m <sup>2</sup> Shift/straight mode: 64-300g/m <sup>2</sup>
	Capacity	Main tray: Straight/shift mode: 3,000 sheets (B5, B5S <sup>1</sup> , A4, A4S <sup>1</sup> ); 1,500 sheets (B4, A3); 750 sheets (A6, B6, A5) Staple mode: 1,000 sheets Sub tray: 200 sheets (same size)
PB-503 Perfect Binder	Staple Modes	Corner stapling: horizontal, vertical 2-point stapling: horizontal, vertical
	Type	Hot-melt glue book binder with trim function
LU-202 Large Capacity Unit	Paper Weight	64-105g/m <sup>2</sup> , 81-209g/m <sup>2</sup> for cover sheets
	Paper Size	A4, B5, A5, A5S <sup>1</sup> , irregular sizes (139 x 210 to 307 x 221mm)
FS-521 Staple Finisher	Bound Pages	Approx. 300 sheets max. (less than 30mm thick)/approx. 10 sheets min.
	Capacity	2,500 sheets
FS-612 Booklet Finisher	Paper Sizes	SRA3, A3, B4, SRA4, SRA4S <sup>1</sup> , A4, A4S <sup>1</sup> , B5
	Paper Weights	64 - 300g/m <sup>2</sup>
FS-531 Staple Finisher	Paper Sizes	Staple: A3, B4, SRA4S <sup>1</sup> , A4, A4S <sup>1</sup> , B5, B5S <sup>1</sup> , A5, A5S <sup>1</sup> , B6S <sup>1</sup> Saddle stitching/Folding: A3, B4, SRA4S <sup>1</sup> , A4, A4S <sup>1</sup> , B5, B5S <sup>1</sup> , A5, A5S <sup>1</sup> , B6S <sup>1</sup> Straight: A3, B4, SRA4S <sup>1</sup> , A4, A4S <sup>1</sup> , B5, B5S <sup>1</sup> , A5, A5S <sup>1</sup> , B6S <sup>1</sup> Sub tray mode: SRA3, A3, B4, SRA4, SRA4S <sup>1</sup> , A4, A4S <sup>1</sup> , B5, B5S <sup>1</sup> , A5, A5S <sup>1</sup> , B6S <sup>1</sup> , A6S <sup>1</sup>
	Paper Weights	Staple/saddle stitching/folding: 64-105g/m <sup>2</sup> Straight/shift/Sub tray: 64-300g/m <sup>2</sup>
	Capacity	Multi-letter fold: 50 books Multi-centre fold: 33 books (300mm or more), 25 books (299mm or less) Saddle stitching: 20 books (300mm or more), 15 books (299mm or less) Staple: 100 books (2-9 sheets, 417mm or less), 50 books (2-9 sheets, 418mm or less), 50 books (10-20 sheets), 30 books (21-30 sheets), 25 books (31-40 sheets), 20 books (41-50 sheets)
	Staple Modes	Saddle stitching: Variable (128-160mm) Staple: corner stapling; optional 2 points, 2-point stapling: centre
	Type	50-sheet staple finisher
	Paper Size	Staple mode: A3, B4, A4, A4S <sup>1</sup> , B5, B5S <sup>1</sup> , A5, A5S <sup>1</sup> , B6S <sup>1</sup> Straight mode: SRA3, A3, B4, A4, A4S <sup>1</sup> , B5, B5S <sup>1</sup> , A5, A5S <sup>1</sup> , B6S <sup>1</sup> Sub tray mode: SRA3, A3, B4, SRA4, SRA4S <sup>1</sup> , A4, A4S <sup>1</sup> , B5, B5S <sup>1</sup> , A5, A5S <sup>1</sup> , B6S <sup>1</sup> , A6S <sup>1</sup>
	Paper Weight	Staple mode: 64-209g/m <sup>2</sup> Straight/shift mode: 64-300g/m <sup>2</sup> Sub tray mode: 64-300g/m <sup>2</sup>
	Staple Capacity	Max. 50 sheets(60-80g/m <sup>2</sup> ) 100 sets (2-9 sheets stapled, 150-417 mm) 50 sets (2-9 sheets stapled, 148-149mm / 418-458mm) 50 sets(10-20 sheets stapled) 30 sets(21-30 sheets stapled) 25 sets(31-40 sheets stapled) 20 sets(41-50 sheets stapled)
	Stacking Capacity	Max.3,000 sheets(A4), 1,500 sheets(A3)
	Staple Modes	Corner: 1 point, Centre: 2 points

\*S: Short edge feed



For more information please visit the bizhub Web site at <http://www.bizhubpress.com>

Product appearance, configuration and/or specifications are subject to change without notice.

The Konica Minolta logo and the symbol mark, and "The essentials of imaging" are registered trademarks or trademarks of KONICA MINOLTA HOLDINGS, INC.

bizhub, bizhub PRESS, Magicolor, PagePro, PageScope, Simitri and S.E.A.D. are registered trademarks or trademarks of KONICA MINOLTA BUSINESS TECHNOLOGIES, INC.

All other Konica Minolta brand and product names are registered trademarks or trademarks of KONICA MINOLTA BUSINESS TECHNOLOGIES, INC.

Windows is a registered trademark of Microsoft Corporation in the United States and other countries.

Adobe and PostScript are registered trademarks or trademarks of Adobe Systems Incorporated.

All other brand and product names are registered trademarks or trademarks of their respective owners.



## Ecology & Environment

KONICA MINOLTA products are designed with the environment in mind.

- Energy Star
- RoHS Compliance
- Production at ISO Certified Factories
- WEEE Compliance
- Eco-friendly Toners

## Requirements for safe use

- Please read and follow the instruction manual to ensure safe operation.
- Only operate using appropriate power supply and voltage.
- Connecting the earth wire to an inappropriate place may cause explosion or electric shock. Please connect accordingly (Taiwan and the Philippines only).

KONICA MINOLTA BUSINESS TECHNOLOGIES, INC.

1-6-1 Marunouchi Chiyoda-ku, Tokyo, Japan  
<http://www.biz.konicaminolta.com>

9251-3197-01 0000(E)-A1



## Free Manuals Download Website

<http://myh66.com>

<http://usermanuals.us>

<http://www.somanuals.com>

<http://www.4manuals.cc>

<http://www.manual-lib.com>

<http://www.404manual.com>

<http://www.luxmanual.com>

<http://aubethermostatmanual.com>

Golf course search by state

<http://golfingnear.com>

Email search by domain

<http://emailbydomain.com>

Auto manuals search

<http://auto.somanuals.com>

TV manuals search

<http://tv.somanuals.com>