

**INSTRUCTION
MANUAL**

**KONICA
IP-511**

IP-511

**Print Controller
Printer**

**Read this manual before printing.
Keep readily available for reference.**

Thank you very much for purchasing the IP-511.

This INSTRUCTION MANUAL includes instructions for making prints, correct handling of the machine, and precautions for safety. Please read this manual before printing.

In order to maintain a satisfactory printing performance, please keep this INSTRUCTION MANUAL readily available for reference.

SOFTWARE LICENSE AGREEMENT

This package contains the following materials provided by Konica Corporation (Konica): software included as part of the printing system, the digitally-encoded machine-readable outline data encoded in the special format and in the encrypted form ("Font Programs"), other software which runs on a computer system for use in conjunction with the Printing Software ("Host Software"), and related explanatory written materials ("Documentation").

The term "Software" shall be used to describe Printing Software, Font Programs and/or Host Software and also include any upgrades, modified versions, additions, and copies of the Software.

The Software is being licensed to you under the terms of this Agreement.

Konica grants to you a non-exclusive sublicense to use the Software and Documentation, provided that you agree to the following:

1. You may use the Printing Software and accompanying Font Programs for imaging to the licensed output device(s), solely for your own internal business purposes.
2. In addition to the license for Font Programs set forth in Section 1 ("Printing Software") above, you may use Roman Font Programs to reproduce weights, styles, and versions of letters, numerals, characters and symbols ("Typefaces") on the display or monitor for your own internal business purposes.
3. You may make one backup copy of the Host Software, provided your backup copy is not installed or used on any computer. Notwithstanding the above restrictions, you may install the on any number of computers solely for use with one or more printing systems running the Printing Software.
4. You may assign its rights under this Agreement to an assignee of all of Licensee's right and interest to such Software and Documentation ("Assignee") provided you transfer to Assignee all copies of such Software and Documentation Assignee agrees to be bound by all of the terms and conditions of this Agreement.
5. You agree not to modify, adapt or translate the Software and Documentation.
6. You agree that you will not attempt to alter, disassemble, decrypt, reverse engineer or decompile the Software.
7. Title to and ownership of the Software and Documentation and any reproductions thereof shall remain with Konica.
8. Trademarks shall be used in accordance with accepted trademark practice, including identification of the trademark owner's name. Trademarks can only be used to identify printed output produced by the Software. Such use of any trademark does not give you any rights of ownership in that trademark.
9. You may not rent, lease, sublicense, lend or transfer versions or copies of the Software Licensee does not use, or Software contained on any unused media, except as part of the permanent transfer of all Software and Documentation as described above
10. In no event will Konica be liable to you for any consequential, incidental or special damages, including any lost profits or lost saving, even if Konica has been advised of the possibility of such damages, or for any claim by any third party. Some states or jurisdictions do not allow the exclusion or limitation of incidental, consequential or special damages, so the above limitations may not apply to you.
11. Notice to Government End Users: The Software is a "commercial item," as that term is defined at 48 C.F.R. 2.101, consisting of "commercial computer software" and "commercial computer software documentation," as such terms are used in 48 C.F.R. 12.212. Consistent with 48 C.F.R. 12.212 and 48 C.F.R. 227.7202-1 through 227.7202-4, all U.S. Government End Users acquire the Software with only those rights set forth herein.

Macintosh[®] is a registered trademark of Apple Computer, Inc.

Windows[®] is a registered trademark of Microsoft Corporation.

CONTENTS

- Introduction iv
 - Package Contents v
 - System Requirements v
 - About this Manual vi
 - Conventions Used in this Manual vii
 - Folder structure on the CD-ROM ix

Chapter 1 Overview

- Overview of the Print Controller 1-2
 - Print Controller and Main Body Printer 1-2
 - Print Data Flow 1-4
 - Hardware Configuration 1-5
 - Interface 1-5
 - Printer Driver 1-6
 - Page Description Language 1-6
 - Memory 1-7

Chapter 2 Printer Driver Setup

- Installation of the Printer Driver 2-2
 - Before Installation 2-2
 - Installing to Windows 95/98/Me 2-3
 - Installing to Windows NT4.0/2000 2-7
 - Uninstalling the Printer Driver (Windows 95/98/Me) 2-12
 - Uninstalling the Printer Driver (Windows NT4.0) 2-13
 - Uninstalling the Printer Driver (Windows 2000) 2-15
- Test Page Print 2-17

Chapter 3 Printer Driver Functions

- Printer Driver Functions 3-2
 - Compliant OS 3-2
 - Properties 3-3
 - Function List 3-7
 - Description of Functions 3-13

Chapter 4 Control Panel Setup

- Control Panel 4-2
 - Names and Functions of the Control Panel 4-2
 - LCD Touch Screen 4-4
 - Job Status Screen 4-6
 - Printer Mode Basic Screen 4-8
- Configuration of Printer Setting Menu 4-10
- Functions of the Printer Setting 4-11

- Test Print Menu 4-11
- Controller Set 4-12
- Set Default 4-14
- PCL Setup 4-16
- Print Job 4-17
 - Cancel 4-17
 - Check 4-18
 - Interrupt / Reserve 4-20
 - Forced Output 4-21
 - Password Print (Confidential Output) 4-22
 - Job Combination 4-25

Chapter 5 Printer EKC

- Overview of the Printer EKC 5-2
 - Setting of Printer EKC 5-2
 - Printing with Printer EKC 5-2
 - EKC Limit 5-3

Appendix A Troubleshooting

- Basic Troubleshooting Appendix A-2
- General Problems of Printing Appendix A-3
 - The Print Controller does not respond to the Print command. Appendix A-3
 - A message requesting a paper size you do not use is displayed. Appendix A-3
 - You cannot print the test print. Appendix A-4
 - The print setting of a job does not correspond to the result of printing. Appendix A-4
 - Memory Overflow Appendix A-4
 - HD Full Appendix A-5
- Troubles Concerning the Scanner Appendix A-6
 - Cannot connect to the scanner Appendix A-6
- Checking on Non complete job Appendix A-7

Appendix B Product Specifications

- Product Specifications Appendix B-2

Appendix C Font List

- Internal Font List Appendix C-2

Introduction

■ Introduction

The Konica IP-511 is a print controller designed to be a built-in type server for the Konica 7155 / 7165 printer/copier. It enables direct printing from Windows-compliant computers. It can also enable use of the copier as a network printer when an internal network interface card is used.

For guidance in setting up the copier, configuring the settings for networks, and a description of the scanning features available, refer to the corresponding separate manuals.

Registered Trademarks

Microsoft, MS and MS-DOS are registered trademarks of Microsoft Corporation in the United States.

IBM is a registered trademark of International Business Machines, Inc. in the United States.

Windows™ is a trademark of Microsoft Corporation.

HP and PCL are registered trademarks of Hewlett-Packard Company.

Agfa Microtype font is a registered trademark of Agfa Corporation.

PEERLESS is a registered trademark of PEERLESS SYSTEMS CORPORATION.

Adobe, Adobe Logo, Acrobat, Acrobat Logo, PostScript and PostScript Logo are registered trademarks or trademarks of Adobe Systems, Inc.

Other company names and product names used in this manual are the registered trademarks or trademarks of their respective companies.

Copyright

COPYRIGHT © 2001 Konica corporation. All rights reserved.

Patent Notice

The product includes an implementation of LZW licensed under U.S. Patent 4,558,302.

Built-in Fonts

The print controller includes support for PCL5e Language (HP PCL clone) and includes the 80 built-in Agfa Microtype fonts. For a complete list, see "Appendix C Font List"(p.Appendix C-1).

- A part or all of this INSTRUCTION MANUAL may not be used or copied without permission.
- Konica will have no liability for any influences caused by using the printing system and this manual.
- Information written in this INSTRUCTION MANUAL is subject to change without notice.
- Konica Corporation maintains the copyright of this printer driver.

● Package Contents

The following items are supplied with the IP-511:

- **Notice Sheet**
- **Interface Board**
- **Board Cover**
- **Board Protector Cover**
- **TP screw (M3 x 6)**
- **TP screw (M4 x 6)**
- **User Software CD**
 - (Windows)**
 - Printer Driver
 - Scanner Driver (compatible with TWAIN)
 - Network Connection Utilities
 - BOOTP
 - IP-P2P
 - MAP
 - NW Setup
 - UNIX
 - Adobe Acrobat Reader
 - INSTRUCTION MANUAL (this manual, Network Setup manual and Network Scanner manual)
 - Release Note (describes the latest information as well as limits of the system and the user software.)
 - Screenfonts
 - (Macintosh)**
 - Adobe Acrobat Reader
 - INSTRUCTION MANUAL (this manual, Network Setup manual and Network Scanner manual)

● System Requirements

Windows

The following are required to print from Windows-compliant computers to the printing system:

- Computers on which Windows 95/98/Me/NT4.0/2000 can run
- CD-ROM drive (necessary to install the printer driver or the scanner driver)

Using Windows 95/98/Me

- Microsoft Windows 95/98/Me
- 32 MB RAM or more

Using Windows NT4.0/2000

- Microsoft Windows NT4.0/2000
- 32 MB RAM or more

Parallel Port

The following are required to print to the print controller by way of the parallel port:

- Windows-compliant computers
- IEEE 1284 parallel cable

One end of the cable is required to have a DB 36 pin male connector (connected to the print controller).

● About this Manual

This manual is used only for the IP-511 Print Controller.

This manual describes how to operate the IP-511 Print Controller when the Konica 7155 / 7165 Copier is used as a printer by connecting it to computers.

This manual assumes you are familiar with the basic operation of Windows and Copier.

For guidance in setting up the copier, configuring the settings for networks, and a description of the scanning features available, we suggest you refer to the corresponding separate manuals.

MEMO

The main body printer (copier) and the internal network interface card are separately supplied with instruction manuals. Refer to these manuals as needed.

For detailed operations of Windows 95/98/Me and Windows NT4.0/2000, refer to the operating manuals for each operating system. For application operations, refer to the operating manuals provided with each application.

This manual is composed of the following five chapters and appendices:

Chapter 1: Overview

Chapter 1 describes the print controller hardware and the overview of its functions, and briefly explains how to connect the parallel ports of computers to the print controller and the main body printer (copier).

Chapter 2: Printer Driver Setup

Chapter 2 describes how to install the printer driver (user software included on the user software CD) to Windows-compliant computers.

It enables printing from each application of Windows-compliant computers to the main body printer by way of a parallel port/network.

Chapter 3: Printer Driver Functions

Chapter 3 describes various functions of the printer driver installed on Windows-compliant computers.

Chapter 4: Control Panel Setup

Chapter 4 describes the layout of the control panel of the main body printer and explains how to operate and set functions on the control panel.

Chapter 5: Printer EKC

Chapter 5 describes how to set and use Printer EKC.

Appendices

- Appendix A describes troubleshooting tips for the print controller.
- Appendix B describes product specifications.
- Appendix C lists the built-in printer fonts included with the print controller.

● Conventions Used in this Manual

Notation of each product

The following abbreviations are used in this manual:

(1) IP-511 Print Controller:	print controller
(2) Konica 7155 / 7165 Printer/Copier:	main body printer or copier
(3) Internal Network Interface Card:	network interface card
(4) A printing system that combines the above (1), (2) and (3) products:	printing system
(5) Microsoft Windows 95:	Windows 95
Microsoft Windows 98:	Windows 98
Microsoft Windows Me:	Windows Me
Microsoft Windows NT4.0:	Windows NT4.0 or Windows NT
Microsoft Windows 2000:	Windows 2000
Above OSs:	Windows 95/98/Me Windows NT4.0/2000 Windows NT/2000 Windows 95/98/Me/NT/2000

Notation of cautions in this manual are shown with the caution symbol.

Each mark used in this manual has the following meaning.



Important

Things important in operating hardware and software were described.



Precautions and limits at the time of operating hardware and software were written.



Limitation

Limitations imposed by a combined use of features offered by hardware and software were described.

MEMO

Hints, advice, confirming items, etc. at the time of operating hardware and software were written.

Introduction

Notation of names shown on the screen are written within square brackets
e.g., "click the [OK] button."

Notation of folders

Folders are referred to in upper-to-lower sequence.

For example:

Select the [Printer.inf] file in the "PCL\English\Win9X" folder of the User Software CD.

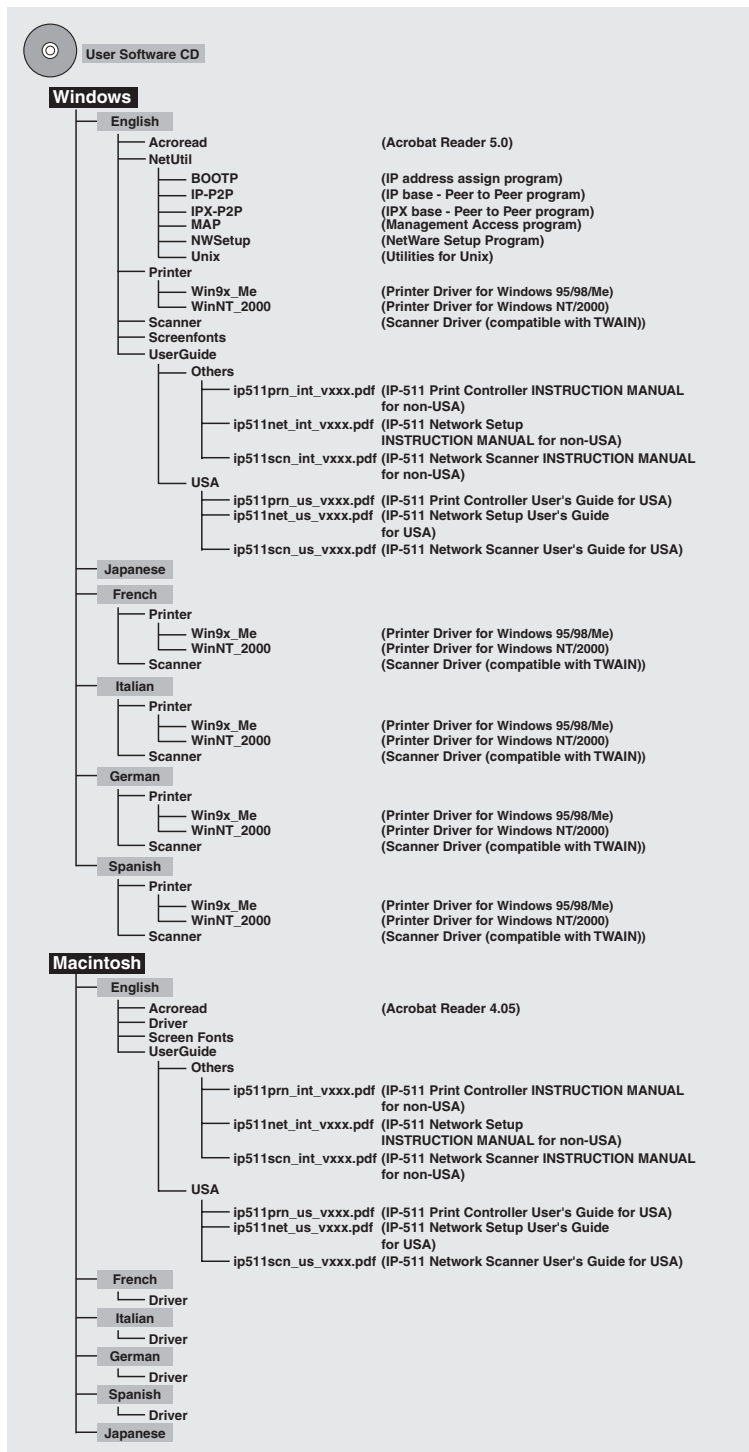
Notation of the reference in this manual is written within quotation marks
e.g., "Chapter 1 Overview."

Indicates where to be referred to for information concerned

e.g., "  (p.1-1)."

When you click page number, move reference page.

● Folder structure on the CD-ROM



Chapter 1 Overview

■ Overview of the Print Controller	1-2
--	-----

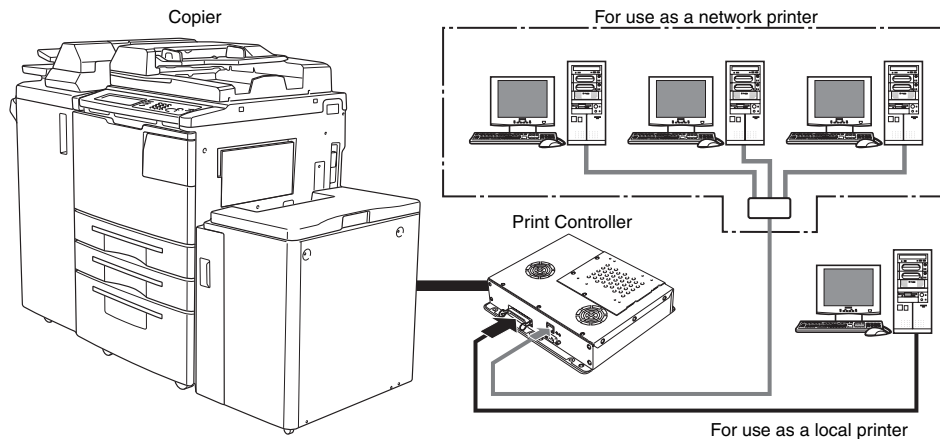
■ Overview of the Print Controller

● Print Controller and Main Body Printer

The print controller is designed to be used as the built-in type server of the main body printer/copier.

The print controller can be used to connect the main body printer to computers or to a network on which the main body printer can function as a printer/network printer from applications on Windows 95/98/Me/NT/2000. The internal network interface card is required for connecting to a network.

Printing System



When the command for printing is executed from an application on Windows 95/98/Me/NT/2000, print data is sent to the print controller by way of a parallel interface (IEEE 1284) or a network.

The interpreter inside the print controller rasterizes the print data to image data (bitmap extracting process), which is sent to the print engine in the main body printer via the VIC (video interface card) installed in the main body printer to print.

The print engine in the main body printer receives image data through the PCI bus from the video interface card.

Even while the main body printer is printing the previous print job data or receiving the print data, the print controller can receive the next command for printing from an application.

The printing system can continuously print Letter/A4-size paper at the maximum print speed of 65 ppm (400 dpi/600 dpi).

In addition, this system supports the duplex function and the finisher function which enables the use of five paper trays, stapling, folding and stitching, punching.

Copy Mode, Printer Mode and Scanner Mode

The control panel of the main body printer can be used in any mode of the copy mode, the printer mode or the scanner mode.

Even while the main body printer is printing or copying, the print controller can receive the next job, and while the print controller is receiving (or transmitting) a print job or a scan job, you can use the copy mode.

Printer EKC

Printer EKC is a feature to manage the number of prints on the copier.

Setting the Printer EKC feature means that, provided you enter a password previously established on the printer to request a print job, the copier counts up printouts based on the EKC counter to know when a preset limit is hit, and also rejects a print request from a client having no valid password.

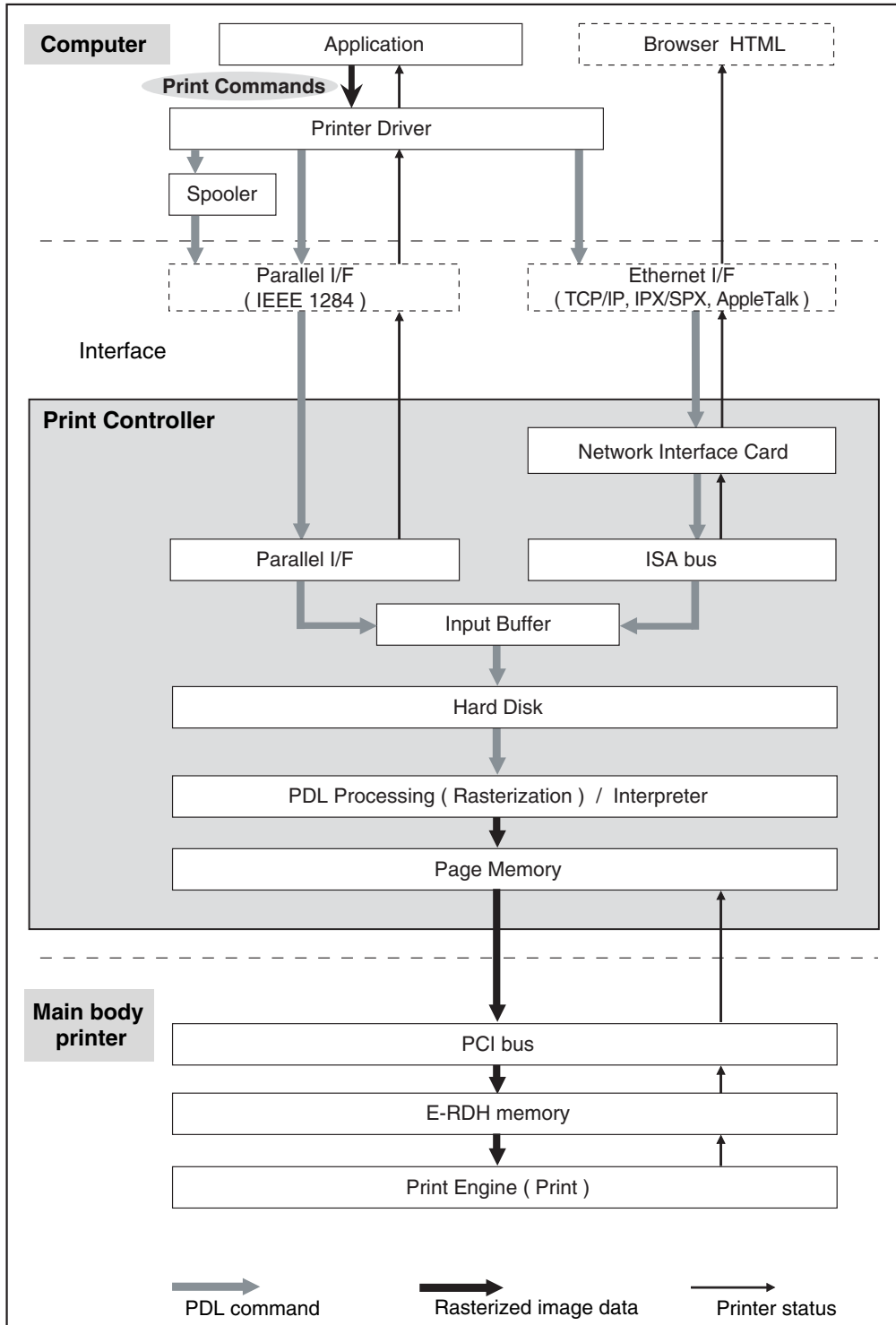
E-RDH (Electronic Recirculating Document Handler)

The E-RDH system temporarily stores in memory the print data you select from available options. The main body printer E-RDH is used to print from the print controller.

The E-RDH memory is 64 MB (standard) and can be extended to 192 MB.

When using the E-RDH in the one-sided mode, printing will be performed simultaneously while the print controller rasterizes the pages in the print job and sends them to the E-RDH memory. While pages are being printed from the E-RDH memory, the print controller continues to rasterize the next print job in the sequence.

● Print Data Flow



● Hardware Configuration

Basic Configuration

Configuration of the print controller is as follows:

- Architecture: IBM Compatible PC System
- Processor: Intel Celeron 566 MHz
- Memory: 64 MB standard / 192 MB max. (Optional)
- Hard Drive: IDE compatible 2.0 GB min.

● Interface



Important

Do not use the parallel port with the Ethernet interface. Otherwise, a system error may occur.

Parallel

Centronics (IEEE 1284)

Ethernet

100BaseTX and 10BaseT

The network interface card is used to connect to the Ethernet. This card is the internal network interface card which supports multiple protocols on the Ethernet. This card includes a CPU and flash memory with an upgradable program.

The network interface card supports the following network protocols.

- IPX/SPX (NetWare, Peer to Peer)
- TCP/IP (LPD/LPR, Peer to Peer)
- AppleTalk (EtherTalk)

For guidance in configuring the settings for networks, refer to "Network Setup" in your INSTRUCTION MANUAL.



Do not use the parallel port with the Ethernet interface. Otherwise, a system errors will occur.

● Printer Driver

The print controller works according to the condition of the printer driver.

The printer driver can be used on the following OS:

- Windows 95
- Windows 98
- Windows Me
- Windows NT4.0
- Windows 2000

Refer to "Chapter 2 Printer Driver Setup" for instructions regarding printer set up.

 (p.2-1)

Refer to "Chapter 3 Printer Driver Functions" for detailed functions of the printer driver.

 (p.3-1)

● Page Description Language

PDL (Page Description Language) controls the transfer of information from the computer to the print controller.

"PCL5e" comes as the PDL with the print controller.

● Memory

Most of the print controller memory is used for rasterizing images (bitmap extracting process), font cache, form overlay or other functions. Only a small part of the memory is used for system operation.

The basic memory setting of the print controller is 64 MB. The memory of the print controller can be expanded to 192 MB maximum.

The more memory in the print controller, the more pages that can be rasterized while waiting for the previous job to print. When Letter/A4 size paper is used, approximately 4,345 KB memory is required to print 1 bit data in 600 dpi.

In addition, the E-RDH memory in the main body printer is used for the print process, which can be expanded to 192 MB maximum.

For printouts using features such as multiple copies, booklet mode and wait mode, all data about the entire set of pages rasterized by the print controller (one job) must be stored in the E-RDH memory first.

Therefore, there are occasions when attempting to produce a large number of pages using those features will not procedure the correct printouts.

If this occurs, installing additional E-RDH memory in the main body printer (copier) is recommended.

Memory Overflow

Depending on the functions selected in the printer driver, occasional memory overflow may occur if the volume of the print job is too large. In this case the print job is cancelled.

e.g., Booklet, Fold & Stitch, 2 in 1, etc.

In case of frequent memory overflow, extending the memory capacity of the main body printer (copier) is recommended.

Upgrading Memory

To obtain optimum printer performance, memory expansion is recommended.

Contact the nearest Konica service representative for details.

Chapter 2 Printer Driver Setup

- Installation of the Printer Driver2-2
- Test Page Print2-17

■ Installation of the Printer Driver

To use the printing system, it is necessary to connect it to computers by way of the parallel interface or Ethernet interface and install the printer driver.

The Printer driver is the program for the print controller which expands the OS functions to control the I/O of the printing system.

● Before Installation

Models and Environment of Computers

The printing system can be used with Windows-compliant computers.

The print controller includes the printer driver for Windows 95/98/Me/NT/2000.

The printer driver can be installed to computer models as long as Windows 95/98/Me/NT/2000 has been installed on them to use the printing system.

Please keep the "User Software CD" on hand since it is required to install the printer driver.



Important

When installing the printer driver, a screen may appear that asks the user to select whether the printer driver file (file to be copied) or a new file that exists in the computer is to be used. If this screen appears, select use of a new file that already exists in the computer. If a new file is not used, the OS may not start up properly the next time the OS is started up.



Limitation

When an old printer driver is installed, make sure to uninstall the printer driver before installing the new printer driver.

Refer to "Uninstalling the Printer Driver" for instruction regarding uninstalling the printer driver.

(p.2-12)

(p.2-13)

(p.2-15)

● Installing to Windows 95/98/Me

To install the printer driver to Windows 95/98/Me, perform the following steps.

Please keep the "User Software CD" on hand since it is required to install the printer driver.

1. Turn on the computer and start Windows.

Exit from all active Windows applications, if required.

2. Click the [Start] button of the task bar. Then, select [Settings] from the Start menu to click [Printers] from the sub-menu.

The [Printers] window will open.

MEMO

Opening from [My Computer]

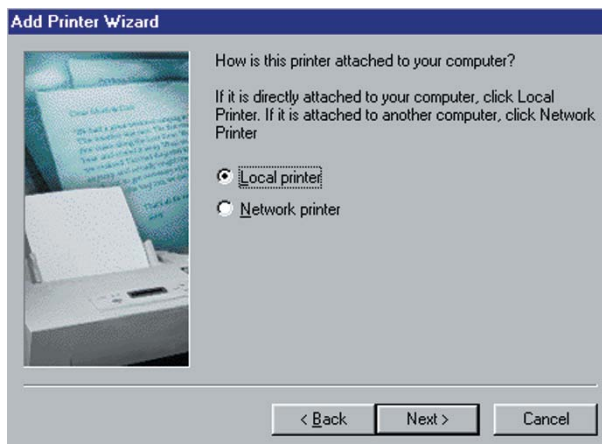
To open the [Printers] window, double-click the [Printers] folder after double-clicking the [My Computer] icon on the desktop.

3. Double-click the [Add Printer] icon of the [Printers] window.

The [Add Printer Wizard] window will appear for setting the printer.

4. Click the [Next] button.

[How is this printer attached to your computer ?] window will appear.



5. Select [Local] and click the [Next] button.

When the printing system is directly connected to a computer in which the printer driver will be installed, select [Local].

The window to select the printer manufacturer and model will appear.

MEMO

When selecting [Network]

When personal computers are connected to a network and you want to print via the network, select [Network]. In this case, it is necessary to complete the network settings on the network interface card and on the personal computers. For details, see your network administrator.

For a [Network Printer], type the network path or queue name and click the [Next] button. If you don't know its name, click the [Browse] button to view available network printers.

Follow the procedure through step 6 to 15.

When the server stores the printer driver as available driver, go to step 13.

6. Click the [Have Disk] button.

The [Install From Disk] window will appear.

7. Click the [Browse] button.

The [Open] window will appear.

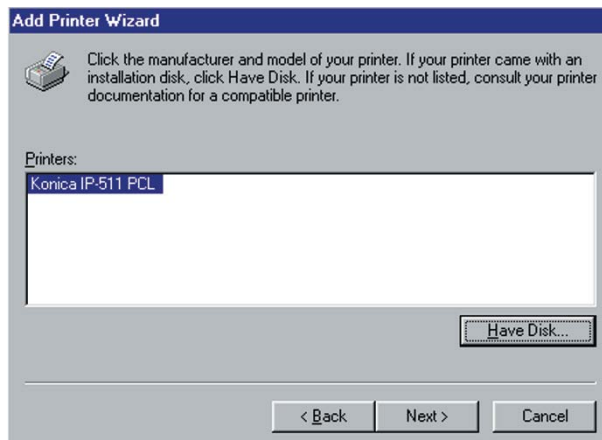
8. Set the "User Software CD" on the CD-ROM drive.

9. Select the [oemsetup.inf] file in the "\\English\Printer\Win9x_Me" folder of the "User Software CD" and click the [OK] button.

The [Install From Disk] window will appear.

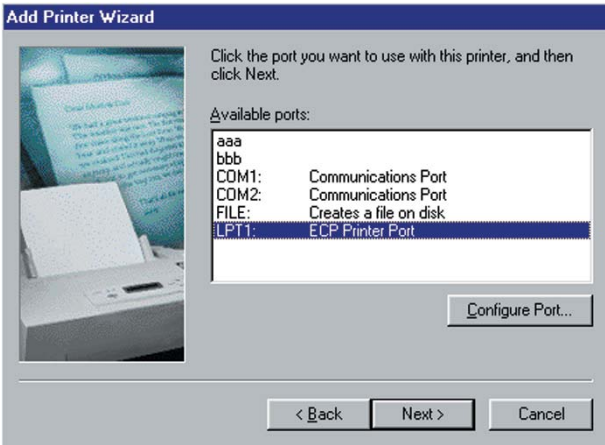
10. Click the [OK] button.

The next [Add Printer Wizard] window to select the printer manufacturer and model will appear.



- 11. Be sure that in the list of [Printers], [Konica IP-511 PCL] is highlighted, then click the [Next] button.

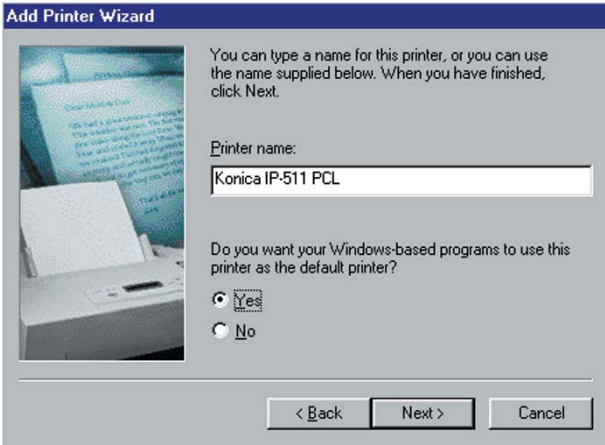
The next [Add Printer Wizard] window to assign a port will appear.



- 12. Select the port to which the printing system is connected and click the [Next] button.

Select LPT port when the printing system is used as a local printer.

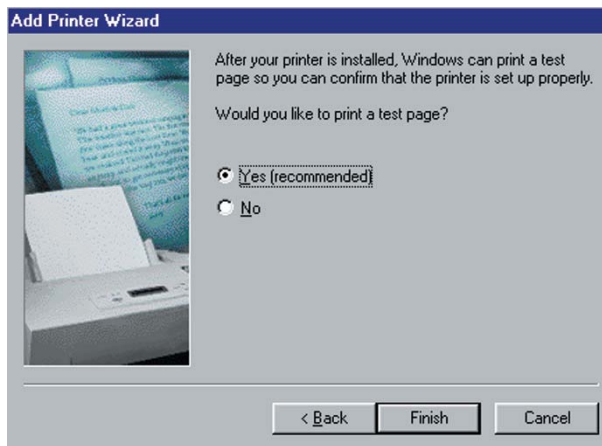
The next [Add Printer Wizard] window to specify the printer name will appear.



13. Specify the printer name and click the [Next] button.

Default: [Konica IP-511 PCL]

The next [Add Printer Wizard] window to print the test page will appear.



14. Select whether you will print the print test or not.

Select [Yes (recommended)] to print the test page, or select [No] not to perform it.

15. Click the [Finish] button.

Necessary files will be copied from the "User Software CD" to complete the installation.

The printer driver of the printing system becomes available without restarting your computer.

● Installing to Windows NT4.0/2000

The installation of the printer driver in Windows 2000 or Windows NT4.0 should be performed by a qualified system administrator or printer administrator.

The process of installing the printer driver necessitates the User Software CD. Get it ready in advance.

About Printer Administration under Windows 2000 or Windows NT4.0

Since Windows 2000 and Windows NT4.0 are operating systems intended for network operations, they offer more enhanced security options than other Windows versions.

There are limitations to what you can operate or set up with internal printers depending on the selected security level (access authorization).

The table following figure shows the permission of the Windows NT compliant printers and its operation range.

Access Rights	Operation Range
No Rights	No operations of printers are allowed.
Printing	Execution of document printing and the following print conditions of each document are allowed to be set. <ul style="list-style-type: none"> · Operations related to printing (selection of a paper size and paper tray, etc.) · Operations related to graphics (processing of resolution and halftone, etc.) · Printer functions (selection of functions particular to the copier)
Document Management	<ul style="list-style-type: none"> · Control of document settings · Pause, restart, reprinting, and deletion of documents
Full Control	<ul style="list-style-type: none"> · All of "Printing" and "Document Management" · Pause and restart of the printer and deletion of all documents · Settings and changes of printer information · Deletion of the printer · Settings and changes of printer access rights

After installing the printer driver, set up an appropriate access authorization for the person assigned to operate the printer.

For guidance in setting up the printer access authorization, refer to "System Guide" for Windows 2000 and Windows NT4.0.

Installation using [Add Printer]

- 1. Turn on the computer and start Windows.**
Exit from all active Windows applications, if required.
- 2. Log on as an administrator (or a user entitled to install a printer).**
- 3. Click the [Start] button of the task bar. Then, select [Settings] of the Start menu and click [Printers] from the sub-menu.**
The [Printers] window will open.

MEMO

Opening from [My Computer]

To open the [Printers] window, double-click the [Printers] folder (or [Control Panel] - [Printers]) after double-clicking the [My Computer] icon on the desktop.

- 4. Double-click the [Add Printer] icon of the [Printers] window.**
The [Add Printer Wizard] window will appear for adding the printer.
- 5. In case of Windows 2000, click the [Next] button.**
In case of Windows NT4.0, follow steps 6.
- 6. Select [Local printer] (Windows 2000)/ [My Computer] (Windows NT4.0) and click the [Next] button.**



Windows 2000

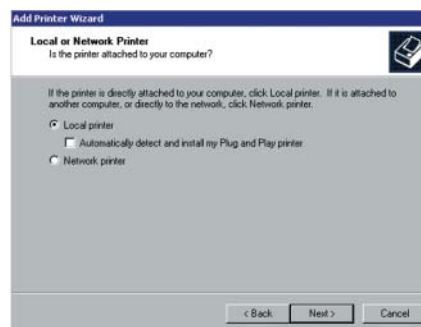
When using Windows 2000, the default setting of the [Automatically detect and install my Plug and Play printer] is "on". For manual installation, turn it "off" by clicking.

When the printing system is directly connected to a computer in which the printer driver will be installed, select [Local printer] (Windows 2000)/ [My Computer] (Windows NT4.0).

Windows NT4.0



Windows 2000





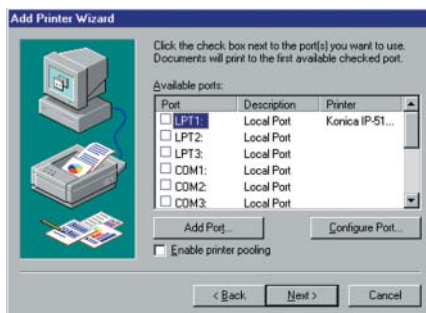
Selecting [Network]

When personal computers or workstations are connected to the network and you want to print via the network, select [Network printer] (Windows 2000) / [Network printer server] (Windows NT4.0). In this case, it is necessary to complete the network settings on the network interface card and on the personal computers.

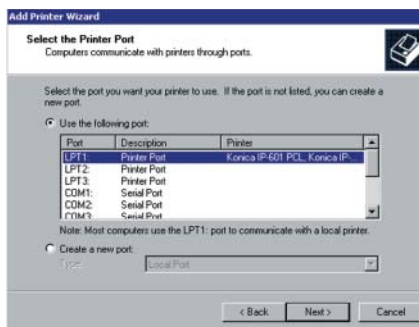
For a [Network printer] (Windows 2000) / [Network printer server] (Windows NT4.0), type the network path or queue name and click the [Next] button. If you don't know its name, click the [Browse] button to view available network printers then follow steps 7 to 20.

7. Select or create the Printer Port to install the printer controller and click the [Next] button.

Windows NT4.0



Windows 2000



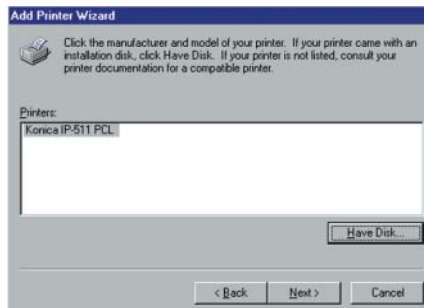
The next [Add Printer Wizard] window will appear.

8. Click the [Have Disk] button.
The [Install From Disk] window will appear.
9. Click the [Browse] button.
The [Open] window will appear.
10. Set the "User Software CD" on the CD-ROM drive.
11. Select the [oemsetup.inf] file in the "\\English\Printer\WinNT_2000" folder of the "User Software CD" and click the [OK] button.
The [Install From Disk] window will appear.

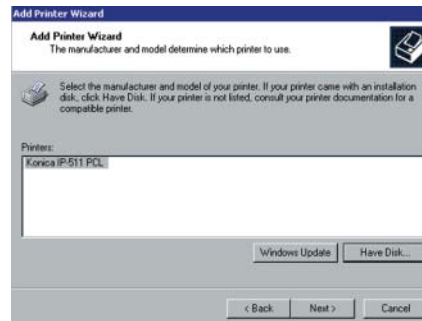
12. Click the [OK] button.

The next [Add Printer Wizard] window to select the manufacturer and model of the printer will appear. In the list of [Printers], [Konica IP-511PCL] will be highlighted.

Windows NT4.0



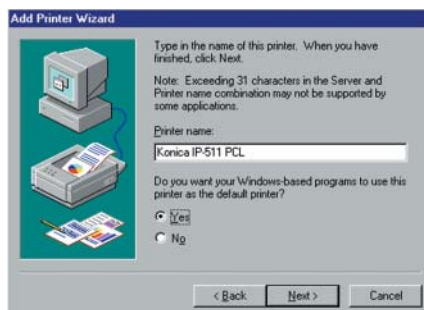
Windows 2000



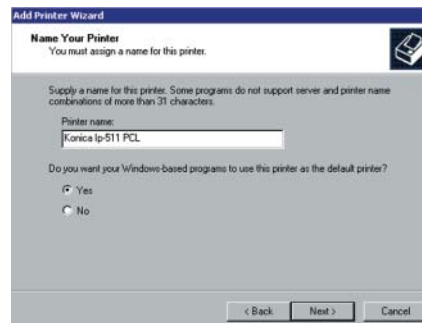
13. Click the [Next] button.

The next [Add Printer Wizard] window to specify the printer name will appear.

Windows NT4.0



Windows 2000

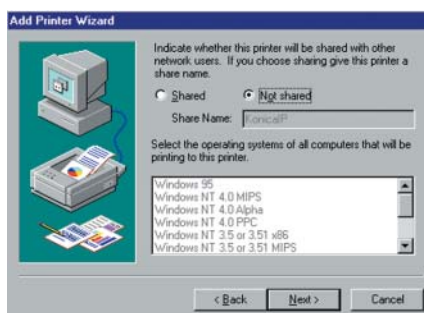


14. Specify the printer name and click the [Next] button.

Default: [Konica IP-511 PCL]

The next [Add Printer Wizard] window will appear.

Windows NT4.0



Windows 2000



15. Select [Do not share this printer] (Windows 2000) / [Not shared] (Windows NT4.0) or [Share as] (Windows 2000) / [Shared] (Windows NT4.0) by clicking.

If you choose [Share as] (Windows 2000) / [Shared] (Windows NT4.0), specify the share name of the printer.

Default: [Konica IP]

16. Click the [Next] button.

The next [Add Printer Wizard] window to perform the print test will appear.

Windows NT



Windows 2000



17. Select whether you will perform the print test or not.

Select [Yes (recommended)] (Windows 2000) / [Yes] (Windows N4.0) to print the test page, or select [No] not to print it.

18. Click the [Next] button.

The [Add Printer Wizard] completion window will appear.

19. Click the [Finish] button.

In case of Windows NT4.0, necessary files will be copied from the "User Software CD" to complete the installation.

The printer driver of the printing system becomes available without restarting your computer.

If you are using Windows 2000, [Digital Signature Not Found] window will appear. Follow steps 20.

20. Click the [Yes] button.

Necessary files will be copied from the "User Software CD" to complete the installation. The printer driver of the printing system becomes available without restarting your computer. If you click the [No] button, the installation will not complete.

● Uninstalling the Printer Driver (Windows 95/98/Me)

To uninstall the printer driver, perform the following steps.

- 1. Turn on the computer and start Windows.**
Exit from all active Windows applications, if required.
- 2. Click the [Start] button of the task bar. Then, select [Settings] of the Start menu to click [Printers] from the sub-menu.**
The [Printers] window will open.

MEMO

Opening from [My Computer]

To open the [Printers] window, double-click the [Printers] folder (or [Control Panel] - [Printers]) after double-clicking the [My Computer] icon on the desktop.

- 3. Click the printer icon of the [Printers] window and press [Delete] key.**
The [Printers] dialog box will open.
- 4. Click the [Yes] button.**
- 5. Restart the computer.**
The printer driver will delete/uninstall.

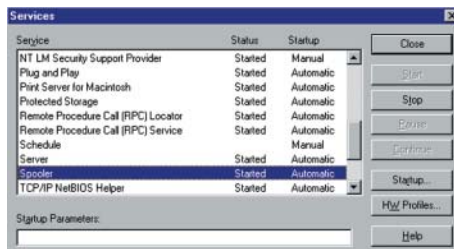


If problems or incompatibilities are uncovered when updating the driver, chances are older driver files are not yet deleted. In this case you need to delete them. For instructions regarding deletion of old driver files, refer to your Windows User's Manual.

● Uninstalling the Printer Driver (Windows NT4.0)

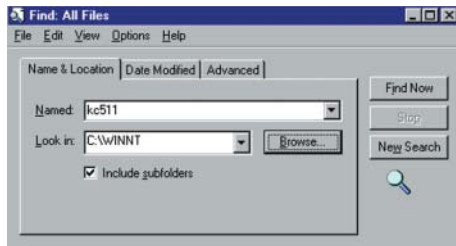
To uninstall the printer driver, perform the following steps.

- 1. Turn on the computer and start Windows.**
Exit from all active Windows applications, if required.
- 2. Click the [Start] button of the task bar. Then, select [Settings] of the Start menu to click [Printers] from the sub-menu.**
The [Printers] window will open.
- 3. Click the printer icon of the [Printers] window and press [Delete] key.**
The [Printers] dialog box will open.
- 4. Click the [Yes] button.**
- 5. Click the [Start] button of the task bar. Then, select [Settings] of the Start menu to click [Control Panel] from the sub-menu.**
The [Control Panel] window will open.
- 6. Double click the [Services] icon of the [Control Panel] window.**
[Service] window will appear.



- 7. Select the [Spooler] in the list and click the [Stop] button.**

8. Search for file with [ip511] at the beginning of file name in the "\Winnt" folder and delete them.



If you cannot delete file, log off once and log on again.

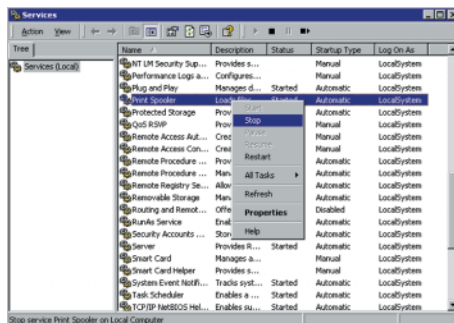
9. Select the [Spooler] in the list of [Services] window, and click the [Start] button.
10. Restart the computer.

The printer driver will delete/uninstall.

● Uninstalling the Printer Driver (Windows 2000)

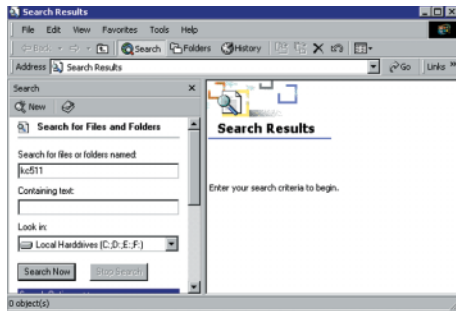
To uninstall the printer driver, perform the following steps.

- 1. Turn on the computer and start Windows.**
Exit from all active Windows applications, if required.
- 2. Click the [Start] button of the task bar. Then, select [Settings] of the Start menu to click [Printers] from the sub-menu.**
The [Printers] window will open.
- 3. Click the printer icon of the [Printers] window and press [Delete] key.**
The [Printers] dialog box will open.
- 4. Click the [Yes] button.**
- 5. Click the [Start] button of the task bar. Then, select [Settings] of the Start menu to click [Control Panel] from the sub-menu.**
The [Control Panel] window will open.
- 6. Double click the [Services] icon of the [Control Panel]-[Administrative Tools] window.**
[Service] window will appear.



- 7. Select the [Print Spooler] in the list and click the [Stop] button.**

8. Search for file with [ip511] at the beginning of file name in the "\\Winnt" folder and delete them.



If you cannot delete file, log off once and log on again.

9. Select the [Print Spooler] in the list of [Services] window, and click the [Start] button.
10. Restart the computer.
The printer driver will delete/uninstall.

■ Test Page Print

You can check whether the printer driver functions properly by performing a test page after the printer driver has been installed.

To print the test page, perform the following steps.

- 1. Click the [Start] button of the task bar. Then, select [Settings] from the Start menu and click [Printers] in the sub menu.**

The [Printers] window will open.

MEMO

Opening from [My Computer]

To open the [Printers] window, double-click the [Printers] folder (or [Control Panel] - [Printers]) after double-clicking the [My Computer] icon on the desktop.

- 2. Right-click [Konica IP-511 PCL] icon and click [Properties].**

[Konica IP-511 PCL Properties] window will appear.

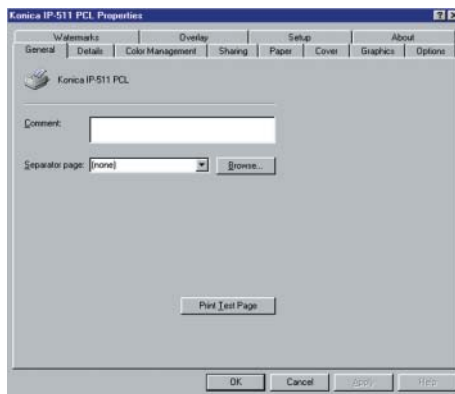
- 3. Select [General] of [Konica IP-511 PCL Properties] and click the [Print Test Page] button.**

A test page print will start and a screen to confirm print end will appear.

- 4. Click the [Yes] button.**

A test page print will end.

Windows 95/98/Me



MEMO

In case of Windows NT/2000, the [General] tabs is displayed differently, but you can find and click the same [Print Test Page] button.

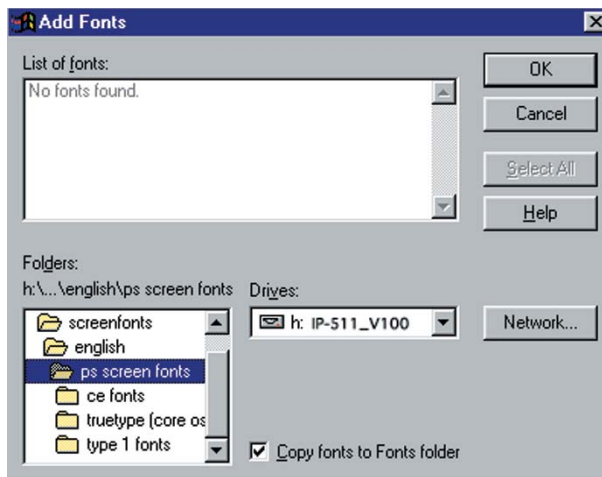
Screen Fonts

The User Software CD includes [Screen Fonts], or TrueType fonts other than fonts which Windows comes standard with. With these fonts installed in your system, you can go with a WYSIWYG approach with both printer fonts and TrueType fonts. The use of screen fonts may also be conducive to increase in print performance.

To install the screen fonts (Windows 95/98/Me/NT/2000)

- 1. From the task bar, select [Start]-[Settings]-[Control Panel].**
- 2. Double-click the [Fonts] icon.**
- 3. Select [File]-[Install New Font].**

[Add Fonts] window will appear.



- 4. Select the fonts you want to add from "\English\Screenfonts" in the User Software CD.**
- 5. Check the [Copy fonts to Fonts folder] check box.**
- 6. Click the [OK] button.**

Chapter 3 Printer Driver Functions

■ Printer Driver Functions	3-2
----------------------------------	-----

■ Printer Driver Functions

Printer driver is the program which is installed in Windows-compliant computers for using and setting up the printing system. It expands the OS functions to control the I/O of the printing system.

This chapter fully describes the various functions of the printer driver.

● Compliant OS

The printer driver can be used on the following OS:

- Windows 95
- Windows 98
- Windows Me
- Windows NT4.0
- Windows 2000

Refer to "Chapter 2 Printer Driver Setup" for installation of the Printer Driver.

 ●●▶ (p.2-1)

● Properties

You have two ways of selecting or changing settings through the printer driver.

1. The first way is by going through [Start] - [Settings] - [Printers] - [Konica IP- 511 PCL] - [Properties].

Or, you can select [Control Panel] - [Printers].

If you are using Windows NT4.0, [Start] - [Settings] - [Printers] - [Konica IP- 511 PCL] - [Konica IP- 511 PCL Default] is also available excluding [Setup] and [Options].

In case of Windows 2000, [Start] - [Settings] - [Printers] - [Konica IP- 511 PCL] - [Konica IP- 511 PCL Printing Preferences] is also available excluding [Setup] and [Options].

2. The second way is to use applications to make settings each time you need to produce printouts.

In advance, check to make sure of [Printer Name] by selecting [File] - [Print] - [Print Dialog] on the application in use.

Settings made in the first way are effective when getting printouts, whatever the application.

Settings made in the second way are effective only when the corresponding application is running. When launching the application next time, settings made by going through [Start] - [Settings] - [Printers] are applied.

Some of the interfaces to tabs and others are displayed differently by OSs.

Also, among the tabs there are some that are not shown depending on settings.

"Konica IP- 511 PCL" is the default printer name.

A different name may be given to the printer icon depending on the system configurations or settings.

Refer to "Chapter 4 Control Panel Setup" for how to perform printer settings from the control panel of the main body printer.

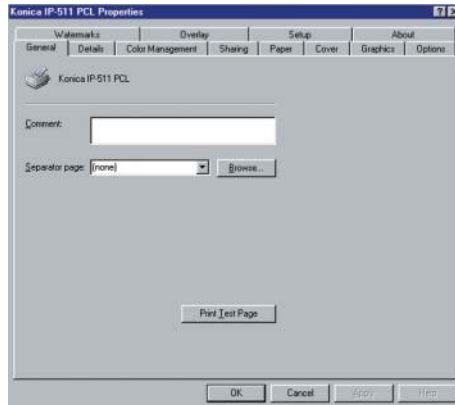
 ●●▶ (p.4-1)

Windows 95/98/Me

1. Click [Start]-[Settings]-[Printers], right-click the [Konica IP-511 PCL] icon, and then click [Properties].

The following tabs will appear:

[General], [Details], [Color Management], [Sharing], [Paper], [Cover], [Graphics], [Options], [Watermarks], [Overlay], [Setup] and [About].



[OK]

When the [OK] button is clicked, settings are saved and the properties screen closes.

[Cancel]

When the [Cancel] button is clicked, settings are canceled and the properties screen closes.

[Apply]

When the [Apply] button is clicked, the present tab settings are saved. This button is used when settings continue to be performed using other tabs, and the present tab settings are registered before using other tabs.

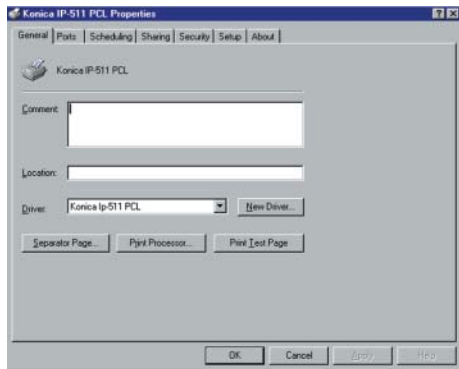
[Help]

When the [Help] button is clicked, Help information will appear. As well, when you click [Help] button, which appears when right-clicking a desired item, pop-up help for the item appears.

Windows NT4.0/2000

- 1. Click [Start]-[Settings]-[Printers], right-click the [Konica IP-511 PCL] icon, and then click [Properties].**

The following tabs will appear, then settings of the printer ports and options should be made: [General], [Advanced], [Ports], [Scheduling], [Sharing], [Security], [Setup] and [About].



- 2. Click [Start]-[Settings]-[Printers], right-click the [Konica IP-511 PCL] icon, and then click [Document Defaults] or [Printing Preferences].**

The following tabs will appear:

[Paper], [Cover], [Graphics], [Options], and [About].

[OK]

When the [OK] button is clicked, settings are saved and the properties screen closes.

[Cancel]

When the [Cancel] button is clicked, settings are canceled and the properties screen closes.

[Apply]

When the [Apply] button is clicked, the present tab settings are saved. This button is used when settings continue to be performed using other tabs, and the present tab settings are registered before using other tabs.

[Help]

When the [Help] button is clicked, Help information will appear. As well, when you click [Help] button, which appears when right-clicking a desired item, pop-up help for the item appears.

Setting details of each tab

[General] tab

Enables printing a test page.

[Details] tab

Performs settings related to ports, drivers, time-out and spooling.

[Sharing] tab

Performs share settings of a printer.

[Paper] tab

Performs settings related to Copies, Collate, Orientation, Paper Size, Paper Source, Duplex, Output Tray, Media Type, Password Print and Features to use the main body printer functions.

[Cover] tab

Performs settings related to front/back cover, intersheet and PI cover sheet.

[Graphics] tab

Performs settings related to Halftones, Brightness, Contrast and Negative.

[Options] tab

Performs settings related to Layout and TrueType options.

[Watermarks] tab

Performs settings related to definitions of Watermark.

[Overlay] tab

Performs settings related to Symbol, Shade, Size, and Position of Form Overlay.

[Setup] tab

Performs settings related to optional accessories and installed memory.

[About] tab

Shows some system information and the printer driver version.

● **Function List**

The following list summarizes functions (Setting Items) which can be set by using the printer driver of the printing system.

Some of the interfaces to tabs and others are displayed differently by OSs.

Also, among the tabs there are some that are not shown depending on settings.

Refer to "Description of Functions" for details of each function (Setting Items).

 (p.3-13)

In addition, refer to "Chapter 4 Control Panel Setup" for how to perform printer settings from the LCD touch screen.

 (p.4-1)

Classification	Setting Items	Set Value	Description	95/98/ Me	NT4.0/ 2000
Paper tab	Copies	1 to 9999	This function is used to specify the number of copies to be printed.	o	o
	Collate	On / Off	This function is used to specify how to output multiple pages.	o	o
	Orientation	Portrait Landscape	This function is used to specify orientation.	o	o
	Paper size	5.5" x 8.5" 8.5" x 11" 8.5" x 14" 11" x 17" A3 - 297 x 420 mm A4 - 210 x 297 mm A5 - 148 x 210 mm A6 - 105 x 148 mm B4 - 250 x 354 mm B5 - 182 x 257 mm B6 - 128 x 182 mm F4 - 8.0 x 13 inches 8K - 267 x 390 mm 16K - 195 x 267 mm 5.5" x 8.5" W 8.5" x 11" W 11" x 17" W A3W- 297 x 420 mm A4W - 210 x 297 mm A5W - 148 x 210 mm B4W - 250 x 354 mm B5W - 182 x 257 mm	The paper sizes you can set differ depending on specifications in the country and trays. Refer to the operating manual of the copier for details.	o	o
	Media Type	Plain paper Thin paper Thick paper Tab sheet 2nd Original OHP [Transparency] OHP-Interleave [Blank] OHP-Interleave [Print] User defined type	This function is used to specify the paper type to be printed from the Bypass tray.	o	o
Paper Source	Auto Select Bypass tray Tray 1 Tray 2 Tray 3 Tray 4(LCT)	This function is used to specify the paper tray.	o	o	

Chapter 3 Printer Driver Functions

Classification	Setting Items	Set Value	Description	95/98/Me	NT4.0/2000
Paper tab (Features)	Duplex	None Flip on long edge Flip on short edge	This function is used to set the mode of Duplex printing.	o	o
	Output Tray	Default Sub Tray Main Tray	This function is used to specify the output tray.	o	o
	Password Print	Off/On	This function is used to set the password print .	o	o
	Settings	-	Press this button to open [Password Print Settings] dialog. Enter your User ID and password.	o	o
	Restore Defaults	-	This function is used to return the settings to default settings.	o	o
	Offset	Off On	This function is used to specify offset mode.	o	o
	Staple	None Single Left Double Top Double Left Single Right Double Right	This function is used select the staple position.	o	o
	Combination	None Booklet Booklet-Right 2-in-1 2-in-1 Repeat	This function is used to arrange page layout.	o	o
	Punch	Off Left Top Right	This function is used to select the punch position.	o	o
	Fold & Stitch	None Fold Only Fold & Stitch DM-Fold	This function is used to arrange the finishing method for printed papers.	o	o
	Wait Mode	None Wait Wait with Proof	This function is used to confirm setting or to proof a print out before starting the entire print job.	o	o
	Image Shift	Off On	This function is used to create a new binding margin on papers.	o	o
	Output Order	FaceDown FaceUp		o	o
Graphics tab	Halftoning	Solid Black and White Patterned Grays Diffused Grays	This function is used to select the method of the image processing for halftones.	o	o
	Brightness	-100 to 100	This function is used to make an adjustment on halftones.	o	o
	Contrast	-100 to 100	This function is used to make an adjustment on halftones.	o	o
	Negative	Off/On	This function is used to print image with reverse tone.	o	o
	Restore Defaults	-	This function is used to return the settings to default settings.	o	o

Chapter 3 Printer Driver Functions

Classification	Setting Items	Set Value	Description	95/98/Me	NT4.0/ 2000
Options tab	Layout - Pages per sheet	1 / 2 / 4 / 6 / 9 / 16	This function is used to print more than one page of a document on one sheet of paper.	o	o
	Layout - Scaling	10 to 400	This function is used to specify the enlargement or reduction rate of image in percentage.	o	o
	TrueType options	Outline soft fonts Bitmap soft fonts Rasters	This function is used to specify how to output TrueType fonts.	o	o
	Chapter	Off/On	This function is used to chapter.	o	o
	Chapter - Pages	-	This function is used to specify the page to be chaptered.	o	o
	HD-105 Image Storage	Off/On Store Store and Print	This function is used to storage the image.	o	o
	HD-105 Image Storage - Settings	-	Press this button to open [Job Combination Print Settings] dialog. Enter your Job ID and password.	o	o
Restore Defaults	-	This function is used to return the settings to default settings.	o	o	
Watermarks tab	Watermark - Text	None CONFIDENTIAL COPY DRAFT FILE COPY FINAL PROOF TOP SECRET	This function is used to specify the watermark.	o	o
	Watermark - Page	All but first page All pages First page only No watermark	This function is used to specify the page on which a selected watermark is printed.	o	o
	Watermark - Top/Bottom	Top Bottom	This function is used to specify whether to print watermarks in the foreground or background.	o	o
	Watermark - Count	-	This function is used to specify how many copies of the watermark on each page.	o	o
	Watermark - Separation	-	This function is used to specify how far apart multiple watermarks on the page.	o	o

Chapter 3 Printer Driver Functions

Classification	Setting Items	Set Value	Description	95/98/Me	NT4.0/ 2000
Watermarks tab	Font - Name	Arial Arial Black Courier New Symbol Tahoma Times New Roman Wingdings, etc.	This function is used to specify the font of the selected watermark. (A list of the fonts installed in the PC is displayed.)	o	o
	Font - Color	Black Dark Grey Light Grey White	This function is used to specify the color of the selected watermark.	o	o
	Font - Darkness	0 to 100	This function is used to control the density of the watermark text.	o	o
	Font - Bold	Off/On	This function is used to apply bold formatting to the watermark text.	o	o
	Font - Italic	Off/On	This function is used to apply italic formatting to the watermark text.	o	o
	Font - Size	1 to 300	This function is used to specify the font size of the selected watermark.	o	o
	Position	Automatically User defined (X: 0 to 100) (Y: 0 to 100)	This function is used to specify the position of the selected watermark.	o	o
	Position - Angle	0 to 360	This function is used to specify the control the "lean" angle of the selected watermark.	o	o
	Adjustment	Move Rotate	This function is used to specify the type of adjustment.	o	o
	Show layout Show single page	-	This function is used to preview your settings in layout with the current watermark settings.	o	o
	New	-	This function is used to create the custom watermark.	o	o
	Delete	-	This function is used to delete the selected watermark.	o	o
	Restore Defaults	-	This function is used to return the settings to default settings.	o	o
Overlay tab	Symbol - File	None (default)	This function is used to specify a BMP file (Microsoft Windows standard) as an overlay form printed on paper.	o	o
	Symbol - Page	All but first page All pages First page only No overlay	This function is used to specify the page on which a selected overlay form is printed.	o	o

Classification	Setting Items	Set Value	Description	95/98/Me	NT4.0/ 2000
Overlay tab	Symbol - Select Bitmap	-	This function is used to register Bitmap image for overlay.	o	o
	Shade - Color	Black	This function is used to specify color for a bitmap image. Only Black is selectable.	o	o
	Shade - Darkness	0 to 100	This function is used to specify Darkness of a bitmap image for overlay.	o	o
	Size	Automatically User defined (10 to 100)	This function is used to specify the magnification rate of overlay image in percentage.	o	o
	Position	Automatically User defined (X: 0 to 100) (Y: 0 to 100)	This function is used to specify the position of overlay image.	o	o
	Show layout Show single page	-	This function is used to preview your settings in layout with the current overlay settings.	o	o
	Restore Defaults	-	This function is used to return the settings to default settings.	o	o
Setup tab	Available options	FS-110 Finisher FS-210 Finisher HD-105 LT-402 Large Capacity Tray LT-412 Large Capacity Tray PI-110 Sheet Feeder PK-110 Punch Unit	This function is used to specify the optional device installed on the main body printer (copier).	o	o
	Installed options	-	Display the selected/added options from the list of available options.	o	o
	Add	-	Add the options to the list of installed options.	o	o
	Remove	-	Remove the options from the list of installed options.	o	o
	Installed memory	64 MB 128 MB 192 MB	This function is used to specify the installed memory.	o	o

Chapter 3 Printer Driver Functions

Classification	Setting Items	Set Value	Description	95/98/Me	NT4.0/2000
Cover tab	Front Cover	Off/On Blank Printed	This function is used when front covers are used.	o	o
	Front Cover - Tray	Bypass tray Tray 1 Tray 2 Tray 3 Tray 4 (LCT)	This function is used to select a paper source used for front covers.	o	o
	Back Cover	Off/On Blank Printed	This function is used when back covers are used.	o	o
	Back Cover - Tray	Bypass tray Tray 1 Tray 2 Tray 3 Tray 4 (LCT)	This function is used to select a paper source used for back covers.	o	o
	Sheet Insertion	Off On Blank Printed	This function is used when intersheets are used.	o	o
	Sheet Insertion - Pages	-	This function is used to specify the page to be inserted.	o	o
	Sheet Insertion - Tray	Bypass tray Tray 1 Tray 2 Tray 3 Tray 4 (LCT)	This function is used to select a paper source used for intersheets.	o	o
	Sheet Insertion - Advanced	Off/On	This function is used to perform advanced settings.	o	o
	Sheet Insertion - Settings	-	Press this button to open [Sheet Insertion Advanced Settings] dialog. Specify the page to be inserted, per each tray.	o	o
	PI Cover Sheet	Off/On	This function is used when PI cover sheets are used.	o	o
	PI Front Cover	None PI Tray1 PI Tray2	Specify the tray you intend to use with PI Front Cover Sheet.	o	o
	PI Back Cover	None PI Tray1 PI Tray2	Specify the tray you intend to use with PI Back Cover Sheet.	o	o
	Restore Defaults	-	This function is used to return the settings to default settings.	o	o
	About tab	-	-	This function is used to show version information of the printer driver.	o

● Description of Functions

Functions (setting items) that can be set with the Printer Driver are summarized in the tab order.

Refer to "Properties" for how to indicate each tab in the properties.

 ●●▶ (p.3-3)

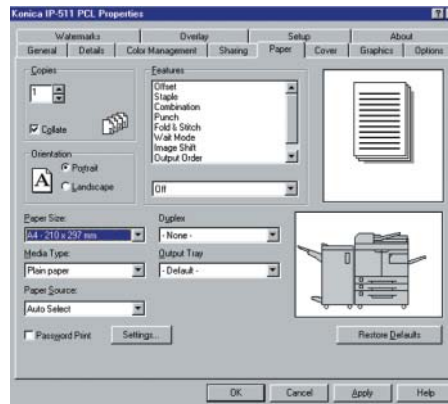
Some of the interfaces to tabs and others are displayed differently by OSs.

Also, there are some tabs that are not shown, depending on settings.

Refer to "Chapter 4 Control Panel Setup" for how to perform printer settings from the control panel of the main body printer.

 ●●▶ (p.4-1)

[Paper] Tab



Copies

This function is used to specify the number of copies to be printed.

Click the [▲] or [▼] button or directly enter the number of copies from the keyboard (1-9999).

Default is 1.

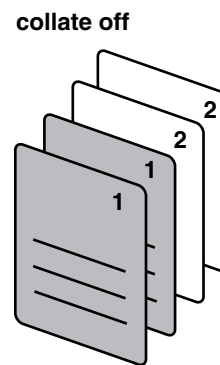
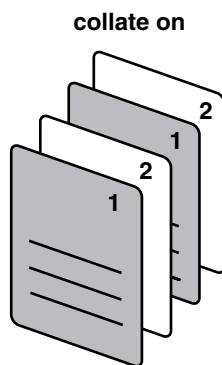
Collate

This function is used to specify how the copier outputs multiple pages.

When [Collate] is checked (on, Default), after one copy of all pages has been printed, the second copy, the third copy, are printed.

When [Collate] is not checked (off), the required number of the first page are printed. Then, the required pieces of the second page, the third page, are printed.

It is recommended that you select [Collate] on the [Paper] tab rather than select it for each application.



Orientation

This function is used to specify orientation.

Select either [Portrait] or [Landscape].

Default is Portrait.

Paper Size

You can select a paper size from the list shown by clicking the [▼] button.

Default is [A4].

Paper size to be selected
5.5" x 8.5"
8.5" x 11"
8.5" x 14"
11" x 17"
A3 - 297 x 420 mm
A4 - 210 x 297 mm
A5 - 148 x 210 mm
A6 - 105 x 148 mm
B4 - 250 x 354 mm
B5 - 182 x 257 mm
B6 - 128 x 182 mm
F4 - 8.0 x 13 inches
8K - 267 x 390 mm
16K - 195 x 267 mm
5.5" x 8.5" W
8.5" x 11" W
11" x 17" W
A3W- 297 x 420 mm
A4W - 210 x 297 mm
A5W - 148 x 210 mm
B4W - 250 x 354 mm
B5W - 182 x 257 mm

The paper sizes selected automatically according to the job settings:

5.5 x 8.5R / 8.5 x 11R / A4R / A5R / A6R / B5R / B6R / F4R /

5.5 x 8.5WR / 8.5 x 11WR / A4WR / A5WR / B5WR

Chapter 3 Printer Driver Functions

Media Type

Select the paper type from the list shown by clicking the [▼] button.

Default is [Plain paper].

The settings you can select are as follows:

[Plain paper], [Thin paper], [Thick paper], [Tab sheet], [2nd Original], [OHP (Transparency)], [OHP-Interleave (Blank)], [OHP-Interleave (Print)] or [User defined type].

The settings except [OHP-Interleave (Blank)] and [OHP-Interleave (Print)] are used for the paper type set on [Bypass tray].

When [2nd Original] or [OHP (Transparency)] is selected, use [Bypass tray] in [Paper Source].

Paper Source

Select the paper source from the list shown by clicking the [▼] button.

The settings you can select are as follows:

[Auto Select], [Bypass tray], [Tray1], [Tray2], [Tray3] or [Tray4(LCT)]. Default is [Auto Select].

When [Auto Select] is chosen, a paper tray with paper which a user specified from their application by using [Properties] of the printing system is automatically selected.

[Tray4(LCT)] can not be selected when [LT-402] (Large Capacity Tray) or [LT-412] (Large Capacity Tray) is not available.

When [OHP-Interleave (Blank)] or [OHP-Interleave (Print)] is selected, specify the paper tray in which the interleaf sheet is loaded from Tray 1, 2 or 3..

Available paper size in each paper tray is shown in the following table:

Paper Source / Duplex	Available paper size
Tray 1 Tray 2 Tray 3	8.5" x 11" / 5.5" x 8.5" / 8.5" x 14" / 11" x 17" / A3 / A4 / A5 / A6 / B4 / B5 / B6 / F4 / 8.5" x 11" W / 5.5" x 8.5" W / 11" x 17" W / A3W / A4W / A5W / B4W / B5W / 16K / 8K
Tray4 (LCT) (LT-402)	8.5" x 11" / A4 / B5 / F4 / 8.5" x 11" W / A4W / B5W / 16K / 8K
Tray4 (LCT) (LT-412)	8.5" x 11" / 8.5" x 14" / 11" x 17" / A3 / A4 / B4 / B5 / F4 / 8.5" x 11" W / 11" x 17" W / A3W / A4W / 16K / 8K
Bypass tray	8.5" x 11" / 5.5" x 8.5" / 8.5" x 14" / 11" x 17" / A3 / A4 / A5 / A6 / B4 / B5 / B6 / F4 / 16K / 8K / 8.5" x 11" W / 11" x 17" W / A3W / A4W / A5W / B4W / B5W
Duplex	8.5" x 11" / 5.5" x 8.5" / 8.5" x 14" / 11" x 17" / A3 / A4 / A5 / B4 / B5 / F4 / 16K / 8K / 8.5" x 11" W / 5.5" x 8.5" W / 11" x 17" W / A3W / A4W / A5W / B4W / B5W

Duplex

Select the Duplex setting from the list shown by clicking the [▼] button.

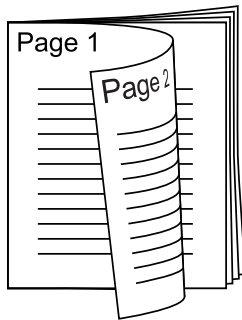
The settings you can select are as follows:

[None], [Flip on long edge] or [Flip on short edge]

Default is [None].

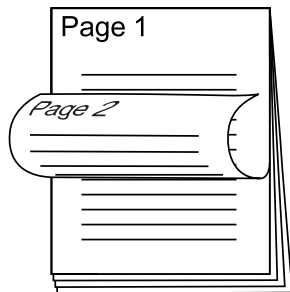
Flip on long edge

Prints paper so that heads of both sides become upward.



Flip on short edge

Prints paper so that the head of the front becomes the foot of the back.



Output Tray

[Default], [Sub Tray] or [Main Tray] can be selected from the list shown by clicking the [▼] button.

If you select [Default], the main body printer will use [Main Tray] automatically.



[Sub Tray] can not be selected in the following cases:

- When Finisher is not available
 - When [On] is selected in [Features] - [Offset]
 - When settings other than [None] are selected in [Features] - [Fold & Stitch]
 - When settings other than [None] are selected in [Features] - [Staple]
 - When settings other than [None] are selected in [Features] - [Punch]
 - When [PI Cover Sheet] is selected in [Cover] tab
-

Password Print

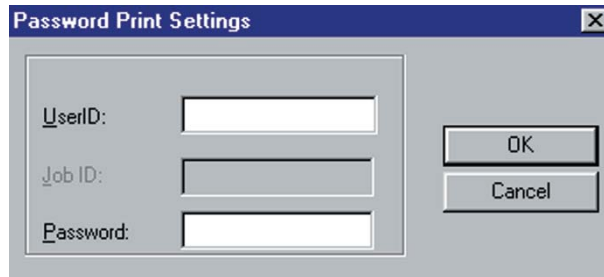
When [Password Print] is checked, you can use password print (confidential output) function to print the confidential documentation.

In this method, both settings on computer and the operation from the LCD touch panel are used. Default is [Off].

Refer to "Chapter 4 Password Print (Confidential Output)" for password print procedure.

 (p.4-22)

Settings



Open the [Password Print Settings] dialog for password setting.

Enter your user ID in the [UserID] text box. You can select any 8-digit number for the User ID.

Enter your password in the [Password] text box. You can select any 8-digit number or character for the Password.

When the Password is entered, the password of [Job Combination Print Settings] dialog for Password Print is replaced with the password of [Password Print Settings] dialog.

MEMO

You must enter the same password (8 digits or less) in the User ID text box that you set up on the copier for Printer EKC.

If you do not enter the correct password or if you leave the User ID text box blank, the print job is not performed and is registered as Unsuccessful Jobs. When in doubt about the password for Printer EKC, ask your system administrator.

Features

Features use the special functions of the main body printer, with which you can set up various printing and finishing methods.

When you select the function you would like to use from the upper list, the actual setting of the function you selected will be shown on the lower box.

You can select the other setting of the function you selected from the list shown by clicking the [▼] button of the lower box.

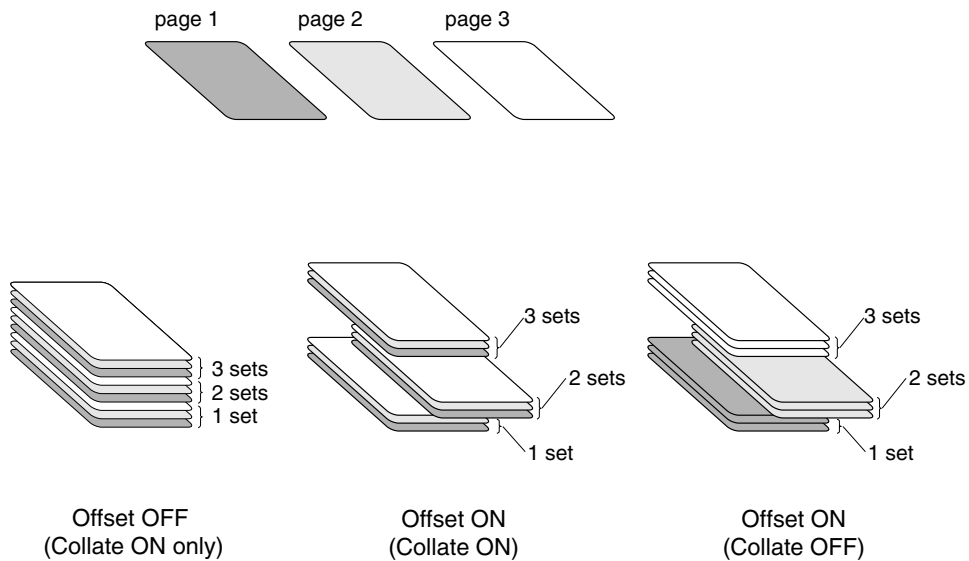
Features you can select are as follows:

Offset	Off / On
Staple	None / Single Left / Double Top / Double Left / Single Right / Double Right
Combination	None / Booklet / Booklet-Right / 2-in-1 / 2-in-1 Repeat
Punch	Off / Left / Top / Right
Fold & Stitch	None / Fold Only / Fold & Stitch / DM-Fold
Wait Mode	None / Wait / Wait with Proof
Image Shift	Off / On
Output Order	FaceDown / FaceUp

Features - Offset

[On] offsets each copied set upon exit.

If you are using printing page 1, 2 and 3:



Limitation

[Offset] can not be performed in the following cases:

- When Finisher is not available
- When [A6] is selected in [Paper size]
- When settings other than [None] are selected in [Features] - [Fold & Stitch]
- When [Sub Tray] is selected in [Output Tray]

Features - Staple

[Single-Left], [Double Top] or [Double Left] makes staple each set of copies and output to the tray of the finisher.

Stapling is performed as shown for the following orientations:

Single Left (Portrait)



Single Left (Landscape)



Double Top (Portrait)



Double Top (Landscape)



Double Left (Portrait)



Double Left (Landscape)



Single Right (Portrait)



Single Right (Landscape)



Double Right (Portrait)



Double Right (Landscape)



Limitation

[Staple] cannot be performed in the following cases:

- When Finisher is not available
 - When [A6] or [B6] is selected in [Paper size]
 - When [Thick Paper], [OHP (Transparency)], [OHP-Interleave (Blank)], [OHP-Interleave (Print)] is selected in [Media Type]
 - When [Booklet] or [Booklet-Right] is selected in [Features] - [Combination]
 - When settings other than [None] are selected in [Features] - [Fold & Stitch]
 - When [Sub Tray] is selected in [Output Tray]
-

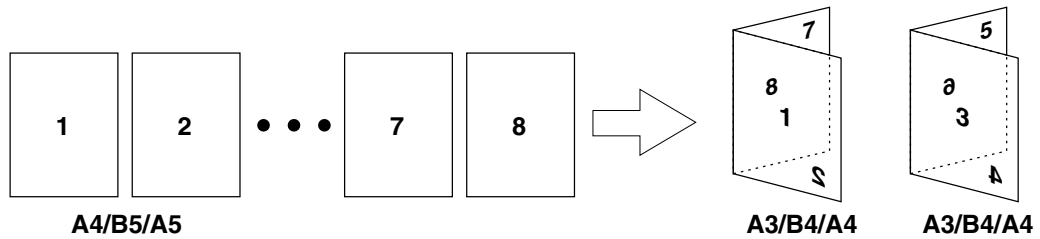
Features - Combination

The settings you can select are as follows:

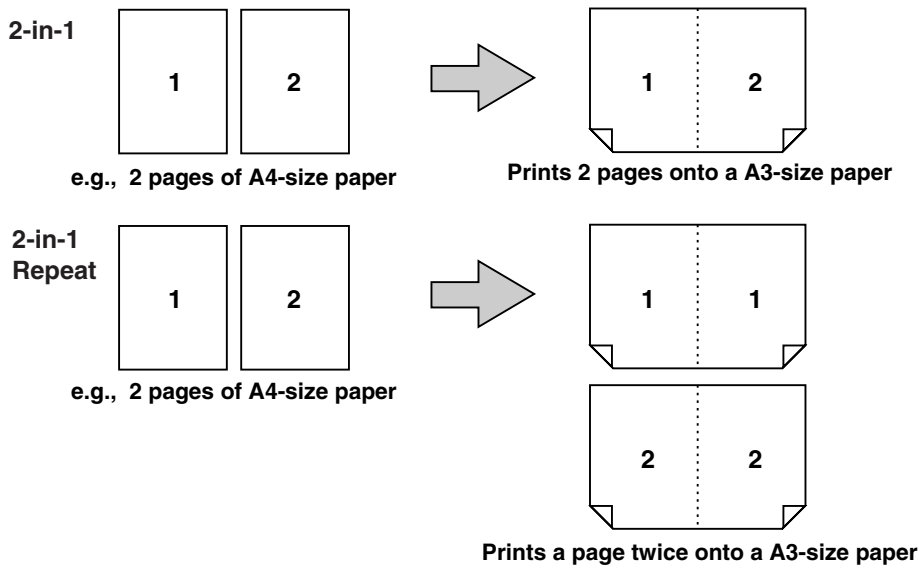
[None], [Booklet], [Booklet-Right], [2-in-1] or [2-in-1 Repeat]

Default is [None].

[Booklet] prints paper so that booklets are made when it is folded into two.



[2-in-1] setting is, available which prints out two-page data on one sheet of paper. Two page data is printed out on a sheet of paper twice as large as the selected size of paper.



Limitation

[Combination] can not be selected in the following cases:

- When [Collate] is not selected in [Copies]
- When [8.5" x 14"], [11" x 17"], [A3], [A6], [B4], [B6], [F4], [8K], [16K], [11" x 17" W], [A3W], or [B4W] is selected in [Paper size]

Limitation

[Booklet] or [Booklet-Right] can not be performed in the following cases:

- When settings other than [None] are selected in [Features] - [Staple]
 - When [Back Cover] and/or [Sheet Insertion] are/is selected in [Cover] tab
 - When [OHP (Transparency)], [OHP-Interleave (Blank)], [OHP-Interleave (Print)] or [Tab sheet] is selected in [Media Type]
-
-

Limitation

[2-in-1] or [2-in-1 Repeat] can not be performed in the following cases:

- When [Back Cover], [Front Cover] and/or [Sheet Insertion] are/is selected in [Cover] tab
 - When [OHP-Interleave (Blank)] or [OHP-Interleave (Print)] is selected in [Media Type]
-
-

Features - Punch

[Left], [Top] punches each set of copies and outputs to the tray of the finisher.

Punching is performed as shown for the following orientations:

Left (Portrait)



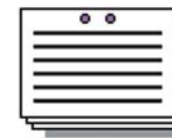
Left (Landscape)



Top (Portrait)



Top (Landscape)



Right (Portrait)



Right (Landscape)



Limitation

[Punch] can not be performed in the following cases:

- When Finisher is not available
 - When [Thick Paper], [Tab Sheets], [OHP (Transparency)], [OHP-Interleave (Blank)], [OHP-Interleave (Print)] is selected in [Media Type]
 - When [Fold Only] or [Fold&Stitch] are selected in [Features] - [Fold & Stitch]
 - When [Sub Tray] is selected in [Output Tray]
 - The following combination is selected
e.g., [Staple - Double Left] and [Double Right]
-

Chapter 3 Printer Driver Functions



With target papers set in multiple trays, the [Punch] feature can be set from the driver, but there are occasions where papers are output without being punched depending on the settings of the copier.

Causative Setting Examples:

- [Front Cover], [Back Cover] or [Sheet Insertion] is selected from the [Cover] tab.
- [Booklet] or [Booklet-Right] is selected from [Combination] on the [Paper] tab.
- Multiple paper sizes are specified from within an application.

For the settings of the copier, contact the nearest Konica service representative.

MEMO

Refer to the following diagram for the paper size, punching and punching & stapling combination.

Available paper size for punching / punching & stapling combination						
output paper size	2 holes		3 holes		4 holes	
	punching	punching & stapling	punching	punching & stapling	punching	punching & stapling
5.5" x 8.5"	O	O	X	X	X	X
8.5" x 11"	O	O	O	O	O	X
8.5" x 14"	O	O	X	X	X	X
11" x 17"	O	O	O	O	O	X
A3	O	O	O	O	O	O
A4	O	O	O	O	O	O
A5	O	X	X	X	X	X
A6	X	X	X	X	X	X
B4	O	O	O	X	O	X
B5	O	O	O	X	O	X
B6	X	X	X	X	X	X
F4 (8.0" x 13")	O	O	X	X	X	X
8K	O	O	O	X	O	X
16K	O	O	O	X	O	X
indefinite / wide paper	X	X	X	X	X	X

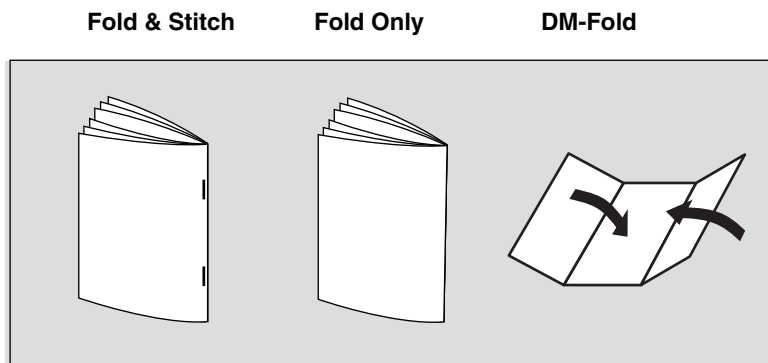
Features - Fold & Stitch

You can make the following finish settings:

[Fold Only] folds each set of copies and outputs to the tray of the finisher.

[Fold & Stitch] folds and stitches each set of copies and outputs to the tray of the finisher.

[DM-Fold] lets output sheets be folded into three equal, smaller folds and be output to the tray of the finisher.



Limitation

[Fold & Stitch] cannot be performed in the following cases:

- When [FS-210 Finisher] is not available
- When [Collate] is not selected in [Copies]
- When [A6] is selected in [Paper size]
- When [Thick Paper], [Tab Sheets], [OHP (Transparency)], [OHP-Interleave (Blank)], [OHP-Interleave (Print)] is selected in [Media Type]
- When [On] is selected in [Features]-[Offset], [Features]-[Staple] and/or [Features]-[Punch]

Features - Wait Mode

[Wait] enables checking of the current job settings on the LCD touch screen of the main body printer

[Wait with Proof] enables checking of the current job settings on the LCD touch screen of the main body printer and to see how the printed job will look before printing out multiple sets.

Refer to "Chapter 4 Print Job - Check".

 (p.4-18)

Features - Image Shift

[On] creates a new binding margin on print papers.

You can set the value of new binding margin via the LCD touch screen of the main body printer.

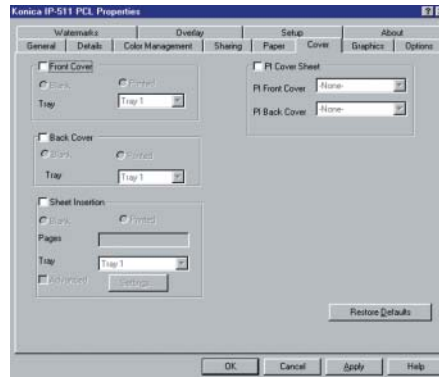
Output Order

Determines whether to output sheets with their print surface facing up or down.

Restore Defaults

By clicking the [Restore Defaults] button, the [Paper] tab settings return to defaults.

[Cover] Tab



Front Cover

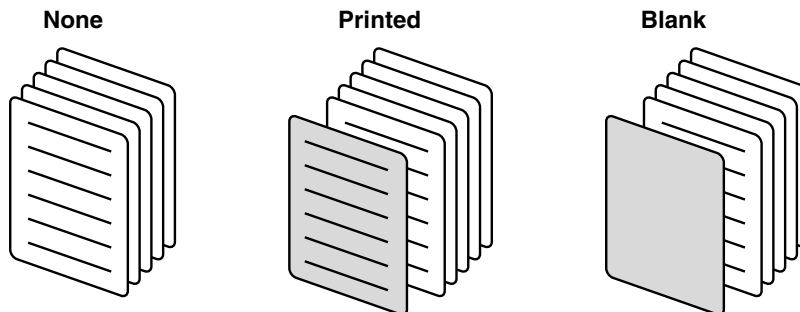
You can select this setting when using a different paper for the front covers from that of the body of the booklet (colored, for example). [Front Cover] inserts a sheet to the top of each set of copies as a Front cover.

When [Front Cover] is checked, you can select [Printed] or [Blank].

[None], [Printed], [Blank]

Default is [None]

- When [Blank] is selected, nothing is printed on the front cover.
- When [Printed] is selected, the first page data is printed on the front cover.



Limitation

[Front Cover] can not be performed in the following cases:

- When [Collate] is not selected in [Copies]
- When [2-in-1] or [2-in-1 Repeat] is selected in [Features] - [Combination]
- When [OHP-Interleave (Blank)] or [OHP-Interleave (Print)] is selected in [Media Type]

Front Cover - Tray

Specify the paper tray for the front cover.

The settings you can select are as follows:

[Bypass tray], [Tray 1], [Tray 2], [Tray 3], or [Tray 4(LCT)]

When [Front Cover] is not selected, [Tray] can not be performed.

Back Cover

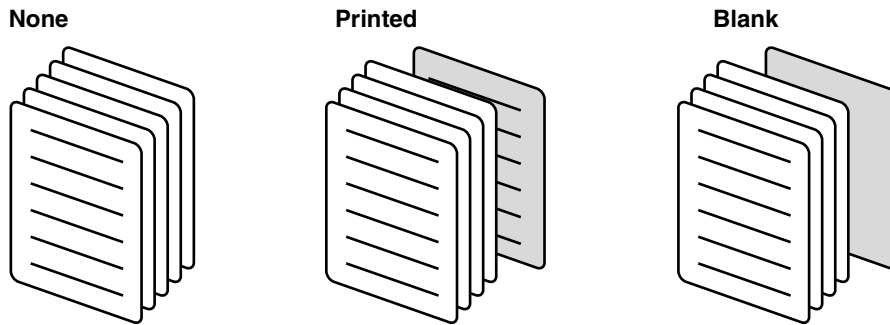
You can select this setting when using a different paper for the back covers from that of the body of the booklet (colored, for example). [Back Cover] inserts a sheet to the top of each set of copies as a Back cover.

When [Back Cover] is checked, you can select [Printed] or [Blank].

[None], [Printed] or [Blank]

Default is [None].

- When [Blank] is selected, nothing is printed on the back cover.
- When [Printed] is selected, the last page data is printed on the back cover.



Limitation

[Back Cover] can not be performed in the following cases:

- When [Collate] is not selected in [Copies]
- When settings other than [None] are selected in [Features]-[Combination]
- When [OHP-Interleave (Blank)] or [OHP-Interleave (Print)] is selected in [Media Type]

Back Cover - Tray

Specify the paper tray for the back cover.

The settings you can select are as follows:

[Bypass tray], [Tray 1], [Tray 2], [Tray 3], or [Tray 4(LCT)]

When [Back Cover] is not selected, [Tray] can not be performed.

Sheet Insertion

[Sheet Insertion] inserts a sheet to the specified page as the inter-sheet.

When [Sheet Insertion] is checked, you can select [Printed] or [Blank].

- When [Blank] is selected, nothing is printed on the inter-sheet.
- When [Printed] is selected, the specified page data is printed on the inter-sheet.



[Sheet Insertion] cannot be performed in the following cases:

- When [Collate] is not selected in [Copies]
 - When settings other than [None] are selected in [Features]-[Combination]
 - When [OHP-Interleave (Blank)], [OHP-Interleave (Print)] is selected in [Media Type]
-

Sheet Insertion - Pages

When [Sheet Insertion] is checked, you can enter the number of page in the [Pages] box.

When [Sheet Insertion] is not selected, [Pages] can not be performed.

[Sheet Insertion] inserts a inter-sheet at the specified page.

You can specify the numbers using comma "," as follows:

e.g. insert at page 3: 3
 insert at pages 3, 5, and 12: 3, 5, 12

The maximum number of pages you can specify to insert is 28.

You cannot specify the duplicate numbers in the [Pages] box.

Sheet Insertion - Tray

Specify the paper tray for the inter-sheet.

The settings you can select are as follows:

[Bypass tray], [Tray 1], [Tray 2], [Tray 3], or [Tray 4(LCT)]

When [Sheet Insertion] is not selected, [Tray] cannot be performed.

Sheet Insertion - Advanced

Check the [Advanced] to use the different tray for each inter-sheet.

When [Advanced] is selected, [Settings] can be performed.

Sheet Insertion - Settings

Open the [Sheet Insertion Advanced Settings] dialog for advanced setting.

Enter the number of pages per tray.

When [Advanced] is not selected, [Settings] can not be performed.

PI Cover Sheet

[PI Cover Sheet] inserts a sheet from PI tray as a Front cover and/or a Back cover.

The settings you can select are as follows:

[PI Front Cover]None / PI Tray 1 / PI Tray 2

[PI Back Cover]None / PI Tray 1 / PI Tray 2



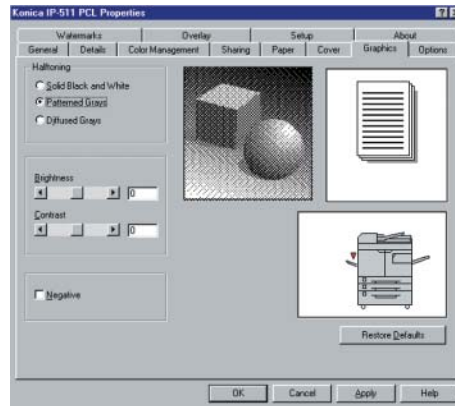
[PI Cover Sheet] can not be performed in the following cases:

- When [FS-210 Finisher] or [FS-110 Finisher] is not available
 - When [PI-110 Sheet Feeder] is not available
-
-

Restore Defaults

By clicking the [Restore Defaults] button, the [Cover] tab settings return to defaults.

[Graphics] Tab



Halftoning

You can select [Patterned Grays], [Solid Black and White] or [Diffused Grays] by clicking the radio button. [Patterned Grays] prints image by an ordered dither algorithm. [Solid Black and White] prints without dithering and gray tone. [Diffused Grays] prints image with error diffusion. A sample image will be displayed according to your selection.

Brightness

Using the Brightness slider or entering the value from -100 to 100 into the text box beside the slider, you can brighten or darken the graphic. If the graphic appears too bright, slide the brightness slider to the left. If the graphic appears too dark, slide the brightness slider to the right.

Contrast

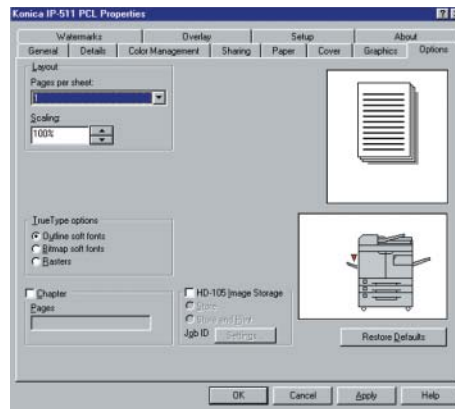
Using the Contrast slider or entering the value from -100 to 100 into the text box beside the slider, you can increase or decrease the range of contrast within the graphic. To increase the luminance contrast, slide the contrast slider to the left. To decrease the luminance contrast, slide the contrast slider to the right.

Negative

[Negative] prints image with reverse tone.

Restore Defaults

By clicking the [Restore Defaults] button, the [Graphics] tab settings return to defaults.

[Options] Tab**Layout - Pages per sheet**

You can select the number of document pages to be printed on one piece of paper.

Select [1], [2], [4], [6], [9] or [16] from the list shown by clicking the [▼] button.

Default for [Pages per sheet] is [1].

[1]



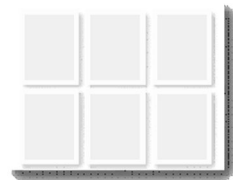
[2]



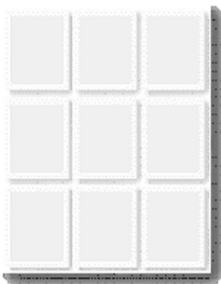
[4]



[6]



[9]



[16]

**MEMO**

When the pages per sheet print is selected, an automatic reduction is activated so that all information is printed within the printable area on the page.

Chapter 3 Printer Driver Functions

Layout - Scaling

Select the enlargement or reduction rate of image in 1% increments by entering the value from 10 to 100 into the text box.

Default is [100]%.

TrueType options

Select [Outline soft fonts], [Bitmap soft fonts] or [Rasters] by clicking the radio button.

[Outline soft fonts] prints documents using a TrueType font which downloads from your computer using Outline data format.

[Bitmap soft fonts] prints documents using a TrueType font which downloads from your computer using bitmap data format.

[Rasters] converts all text and font data in the computer into raster graphics and downloads to the printer.

Chapter

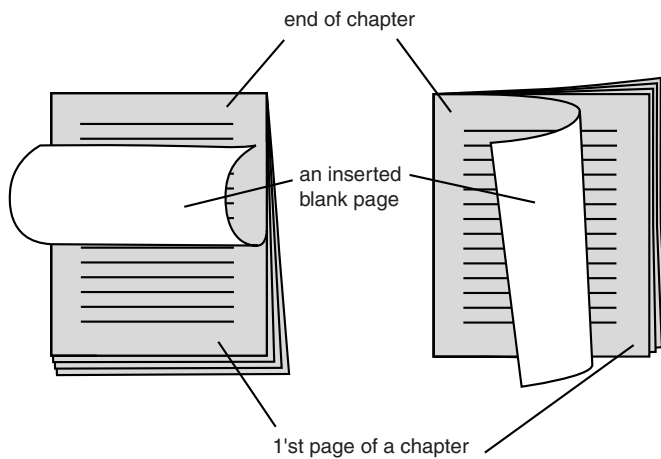
When [Chapter] is selected, you can choose chapters by specifying the pages in the [Pages] box.

The specified page in the [Pages] box means the first page of a chapter.

When [Duplex] is selected, [Chapter] prints the specified page on the front of the paper if the page has an even number which normally would be printed to the back of paper during duplex printing. (In case of that an even number is specified, [Chapter] inserts a blank page before the specified page.)

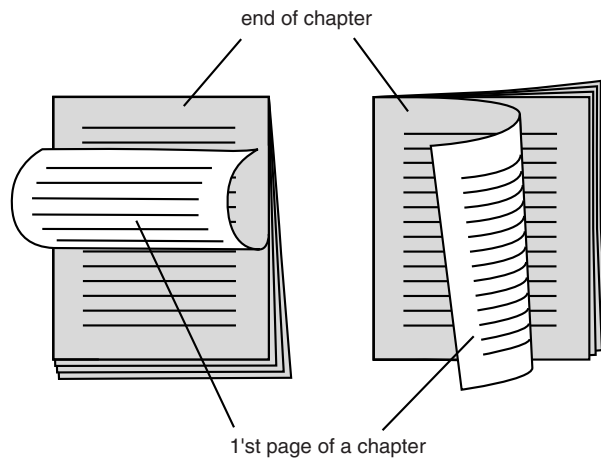
[Chapter] is on;

[Duplex] - [Flip on short edge] [Duplex] - [Flip on long edge]



[Chapter] is off;

[Duplex] - [Flip on short edge] [Duplex] - [Flip on long edge]



The maximum number of pages you can specify to chapter is 30.

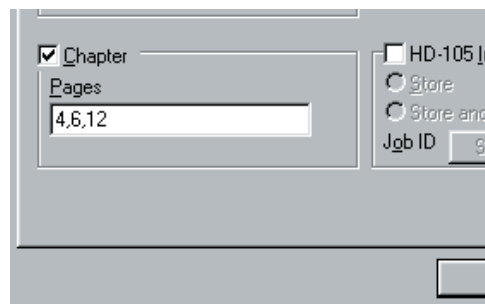
You can specify the numbers using comma ",", "

The same number can not be specified.

You can specify 1 to 999 as follows;

e.g. chapter at page 4: 4

chapter at pages 4, 6, and 12: 4, 6, 12



Limitation

[Chapter] can not be performed in the following cases:

- When [Collate] is not selected in [Copies]
- When [On] is not selected in [Duplex]
- When [Tab Sheets], [OHP (Transparency)], [OHP-Interleave (Blank)], [OHP-Interleave (Print)] is selected in [Media Type]
- When settings other than [1] are selected in [Layout] - [Pages per sheet]
- When [2-in-1] or [2-in-1 Repeat] are selected in [Features]-[Combination]

HD-105 Image Storage

When [HD-105 Image Storage] is checked, you can select [Store] or [Store and Print] to store the printing image.

If [HD-105] is not available, [HD-105 Image Storage] can not be performed.

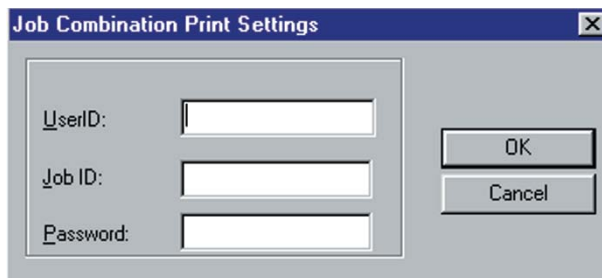
[Store] saves the printing image to the Hard Disk of the printer.

[Store and Print] prints the printing image and saves it to the Hard Disk of the printer.

Refer to "Chapter 4 Print Job-Job Combination" for printing of stored images.

 (p.4-25)

HD-105 Image Storage - Settings



Open the [Job Combination Print Settings] dialog for password setting.

The [Job Combination Print Settings] dialog also appears on checking [HD-105 Image Storage] unless password setting yet.

Enter your job ID in the [Job ID] text box. You can select any 8-digit number or character (upper/lower case) for the Job ID.

Enter your password in the [Password] text box. You can select any 8-digit number or character (upper case only) for the Password.

When the Password is entered, the password of [Password Print Settings] dialog for Password Print is replaced with the password of [Job Combination Print Settings] dialog.

Job Combination

You can combine and print the data held in the print controller's hard disk as a result of the [HD-105 Image Storage] settings on the printer driver and/or using the copier in store mode under the following conditions:

Copier	Printer	note
[P-JOB] is not selected	-	[P-JOB] can not be performed on printer
[Sheet/Cover Insertion] is not selected	[Sheet Insertion] is not selected	-
[Chapter] is not selected	[Chapter] is not selected	-
[Combination] is not selected	[Combination] is not selected	-
[Repeat] is not selected	[Repeat] is not selected	-
[Booklet] is not selected	[Booklet] is not selected	-
[OHP-Interleave] is not selected	[OHP-Interleave] is not selected	-
[Image Insert] is not selected	-	[Image Insert] can not be performed on printer
[Dual Page] is not selected	-	[Dual Page] can not be performed on printer
[Mixed Original] is not selected	Same size of original papers	-
Same size of output papers	Same size of output papers	-
Same resolution	Same resolution	-
Same graphic mode	Same graphic mode	Copier; [Normal]
-	Single tray	-

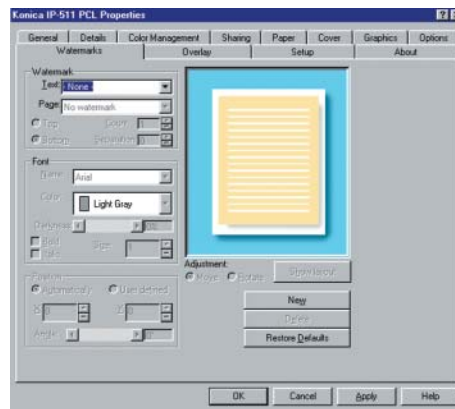
Refer to "Chapter 4 Print Job-Job Combination" for printing of stored images.

 (p.4-25)

Restore Defaults

By clicking the [Restore Defaults] button, the [Options] tab settings return to defaults.

[Watermarks] Tab



Watermark - Text

Select the text to be printed as a watermark from the list shown by clicking the [▼] button.

You can select a watermark from [CONFIDENTIAL], [COPY], [DRAFT], [FILE COPY], [FINAL], [PROOF] and [TOP SECRET].

Default watermarks that are set up during driver installation can be modified and customized. If you want to create new text, click the [New] button. To view the list of available default watermarks and others you've created, click the [▼] button.

Watermark - Page

Select the pages on which to print watermarks.

Select [All but first page], [All pages], [First page only] or [No watermark] from the list shown by clicking the [▼] button.

Watermark - Top / Bottom

[Top] prints watermarks over the text or other material on the page.

[Bottom] prints watermarks under the text or other material on the page.

Watermark - Count

Define how many copies of the watermark you would like printed on each page.

Click the [▲] or [▼] button or directly enter the page number from the keyboard.

Default for the number of copies is 1.

Watermark - Separation

Define how far apart you want multiple watermarks to be on the page. If you have set the count to one, this will be unavailable.

Font - Name

You can select only one font per watermark from the list shown by clicking the [▼] button.

When you change the font, the preview window will refresh itself by showing the effect of the new font on the existing text sample displayed there.

The default font name is [Arial].

Font - Color

Select the color of watermarks.

Select [Black], [Dark Gray], [Light Gray], or [White] from the color palette shown, by clicking the [▼] button.

Font - Darkness

You can control the "density" of the watermark text with this slider. If you slide this to the right, the "density" of the watermark text will be more dense. If you slide this to the left, it will be less dense.

Font - Bold & Italic

When [Bold] is selected, bold formatting will be applied to your selected watermark text.

When [Italic] is selected, italic formatting will be applied to your selected watermark text.

When both of these are selected, bold and italic formatting will be applied.

Font - Size

Select a point size for the font to be used in your watermark by clicking the [▲] or [▼] button or by directly entering the size from the keyboard.

Position

Control the position of the watermark on the page manually or leave it at the automatic setting and let the driver position it for you.

If you select [User defined], the controls below this option will be available and you can define X axis position (left and right) and Y axis position (up and down) of the watermark on the page by clicking the [▲] or [▼] button or by directly entering the values from the keyboard (0-100).

The value of [X] or [Y] represents the placement of origin (beginning) of the watermark in a percentage of the total page width. For [X], a value of 20% means the watermark begins 20% of the way across the page from left to right. For [Y], a value of 20% means the watermark begins 20% of the way down the page from top to bottom.

Position - Angle

Control the lean angle of the watermark by sliding this control back and forth or by typing a number in the text value box from 0 degrees to 360 degrees.

Adjustment

Select [Move] or [Rotate] by clicking the radio button.

When [Move] is selected, you can move the watermark as you position it manually by clicking on the page sample and "dragging" the mark around.

When [Rotate] is selected, you can rotate the watermark as you position it manually by clicking on the page sample and "dragging" the mark around.

Adjustment - Show layout / Show single page

When [Show layout] button is clicked, you can preview how your [pages per sheet] options selected in the [Options] tab will look with the current watermark settings. The [Show layout] button will change to the [Show single page] button by clicking it.

When the [Show single page] button is clicked, you can preview how the single page will look with the current watermark settings. The [Show single page] button will change to the [Show layout] button by clicking it.

New

When the [New] button is clicked, [Custom watermark n] appears in the [Text] box. Create the new watermark text, to replace the current text by typing the new text and pressing the [Enter] key. When the [Enter] key is pressed, the [Text Change & Image Request] screen will appear. Click the [Yes] button, [No] button, or [Cancel] button. When you click the [Yes] button, your newly created watermark text will appear in the available-for-use list when you click the [▼] button beside the [Text] box.

Delete

Click this to delete the selected watermark.

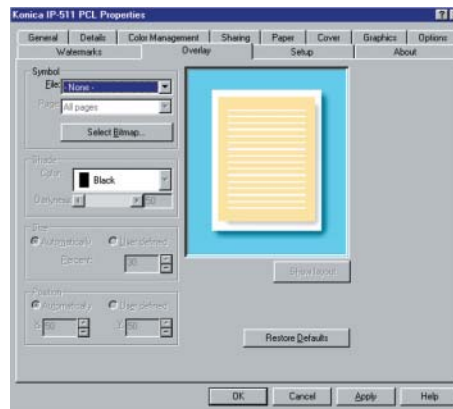


You cannot undo this action, so be sure the currently-displayed watermark is the one you wish to delete.

Restore Defaults

When the [Restore Defaults] button is clicked, the [Watermark - Restore Defaults Request] screen will appear.

- Click the [Yes] button to reset all settings to factory defaults except [Custom watermark] you have created by pressing the [New] button.
- Click the [No] button resets the setting to factory default.

[Overlay] Tab**Symbol - File**

You can select a bitmap file to use from the list shown by clicking the [▼] button. The bitmap files selected before will appear in the list in order of using (the top of the list is a most recently used file). If you've not selected any file, this will say [None].

Select a file from this list or click the [Select bitmap] button to navigate through your system's hard disk to locate a bitmap file to use.

Symbol - Page

You can choose a page on which to place the overlay design.

Select [All but first page], [All pages], [First page only] or [No overlay] from the list shown by clicking the [▼] button.

Symbol - Select bitmap

When you click the [Select bitmap] button, the [Open overlay file] dialog box will appear. Select a suitable bitmap file for the overlay from your system's directories and click the [OK] button to load the bitmap file.

Shade - Color

This function is used only for black and white (monochrome) bitmaps.

Shade - Darkness

You can define with the slider or numerical entry box how "dark" or "solid" your overlay will be. A setting of 100% is a completely solid overlay, a setting of 50% provides equal overlay to background coverage, and lesser settings make the overlay more transparent.

Size

When [Automatically] is selected, a symbol you selected will be resized to 30% of the page size.

When [User defined] is selected, you can set the overlay size on the page.

Position

You can control the position of the overlay on the page manually or leave it at the automatic setting and let the driver position it for you.

If you select [User defined], you can define the X axis position (left and right) and Y axis position (up and down) of the overlay on the page by clicking the [▲] or [▼] button or by directly entering the values from the keyboard (0-100).

Show layout / Show single page

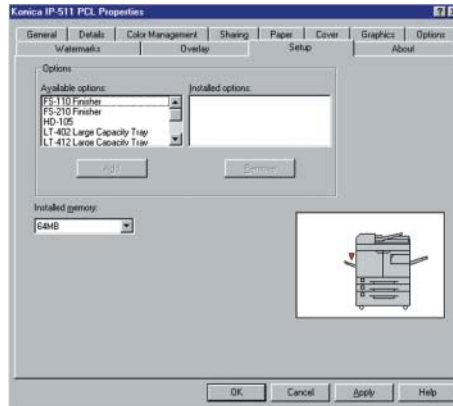
When the [Show layout] button is clicked, you can preview how your [pages per sheet] options selected in [Options] tab will look with the current overlay settings. The [Show layout] button will change to the [Show single page] button by clicking it.

When the [Show single page] button is clicked, you can preview how the single page will look with the current overlay settings. The [Show single page] button will be changed to the [Show layout] button by clicking it.

Restore Defaults

By clicking [Restore Defaults] button, settings of the [Overlay] tab return to defaults.

[Setup] Tab



Available options

This list shows available printer options. If you purchase this optional accessory you can make the printer driver aware of it by selecting it from this list and clicking the [Add] button. The selected option's label will move into the list of [Installed options].

Installed options

This list displays the selected options from the list of [Available options].

Add

When you click the [Add] button after selecting an option from the list of [Available options] (such as Finisher, Hard Disk, Large Capacity Tray, Trimmer Unit, Punch Unit etc.), the driver software will make the option available from that point on.

Remove

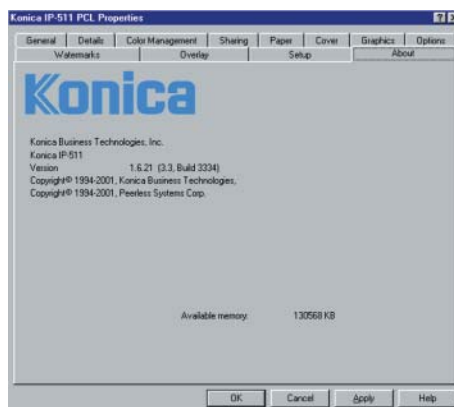
Clicking the [Remove] button after selecting an option from the list of [Installed options] will remove the option from the list of [Installed options]. The option will move to the list of available options, ready to install later.

Installed memory

You can select the amount of memory you have installed in your printer from the list shown by clicking the [▼] button.

Your printer supports expansion up to 192 megabytes of RAM using standard DIMM modules. It comes with 64 megabytes pre-installed on the print controller, which should be sufficient for general office use.

[About] Tab



The [About] tab shows some system information and the printer driver version.

Chapter 4 Control Panel Setup

■ Control Panel	4-2
■ Configuration of Printer Setting Menu	4-10
■ Functions of the Printer Setting	4-11
■ Print Job	4-17

■ Control Panel

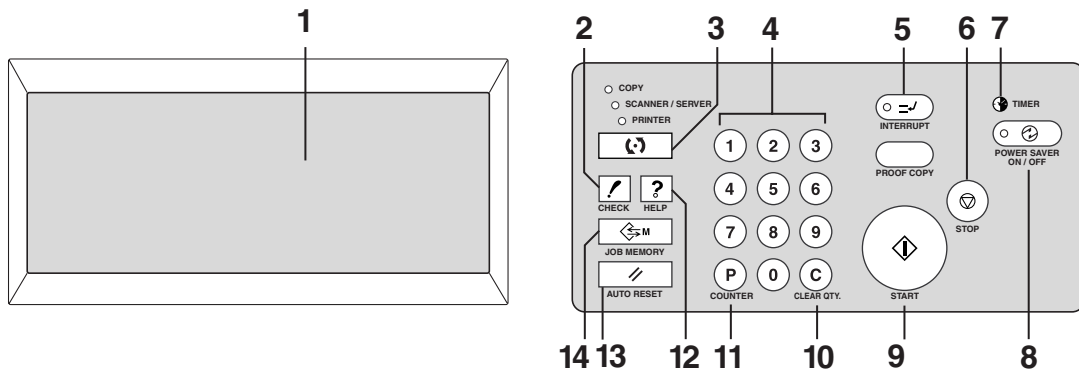
You can set up the printing system from the control panel of the main body printer (copier).

This chapter describes the basic operation of the control panel and the setup menu as well as the functions of the printing system setup.

Refer to the operating manual of the copier for other functions and screens of the control panel.

● Names and Functions of the Control Panel

The control panel has the following names and functions.



1. LCD TOUCH SCREEN

Displays printing system status; various setting menus and setup items; help information; interactive screens; and touch keys for selecting all functions.

2. CHECK

Displays a screen showing all settings that are selected for the current job when setting up the Wait Mode on the printer driver screen.

3. MODE

Switches the machine operation mode to copier, printer, and scanner/server in turn.

4. KEYPAD

Enters numeric values.

5. INTERRUPT

Stops printing in progress to allow copying from the platen glass.

6. STOP

Stops the copying sequence, scanning or printing; deletes the stored memory.

7. TIMER

Lights when the timer function is set.

8. POWER SAVER ON/OFF

Activates power-saving mode for times when the copier is inactive, or activates timer interrupt mode when weekly timer function is active.

9. START

Activates scanning or copying.

Restarts the printing after Wait Mode - Wait or Proof.

10. [C] (CLEAR QTY.)

Allows resetting of print quantity.

11. [P] (COUNTER)

Displays the Counter Screen or accesses programming modes for setting special functions.

12. HELP

Displays a screen with help for the currently selected function.

13. AUTO RESET

Restores copier to automatic mode settings or to key operator settings.

14. JOB MEMORY

Displays screens for selecting job store/job recall functions.

Chapter 4 Control Panel Setup

● LCD Touch Screen

The touch screen is an LCD (liquid crystal display) that displays interactive screens with touch sensitive keys for making copy/print job selections. Selections are highlighted when touched.

The screens also work with the conventional control panel keys.

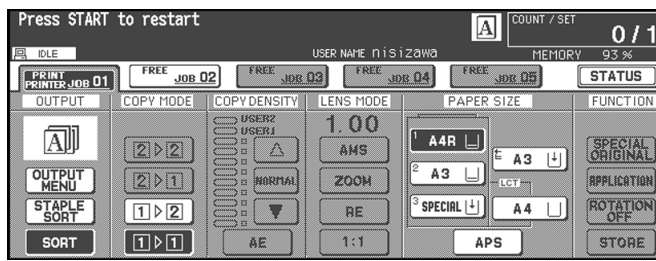


The touch screen of the control panel is covered with glass. Do not drop heavy items on the glass, or put excess weight or pressure on it; otherwise the glass may break or become scratched.

After the power switch is turned on, the Konica name displays for approximately 10 seconds, until initial machine settings are established. Then, the 7 levels of Warm-Up Screen displays for approximately 6 minutes, until the fixing temperature is reached.

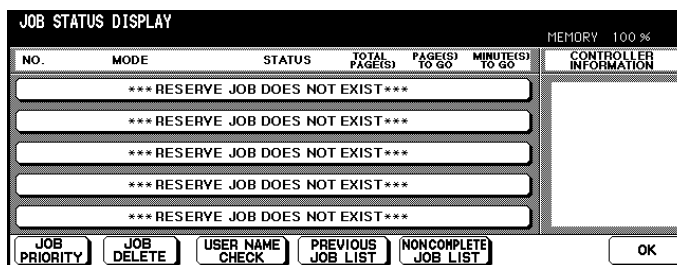
When the [Basic Screen] (copy mode basic screen) is displayed, the touch screen becomes interactive. The interactive condition enables you to communicate directly with the printing system/copier system/scanner system simply by touching keys displayed on the screen; or by pressing conventional keys, as required.

[Basic Screen] (copy mode basic screen)



When you touch the [STATUS] key on the Basic Screen, the Job Status Screen will be displayed.

[Job Status Screen]



These screens automatically display information regarding copying/printing status, print job status and settings.

The printing system is ready to receive the print data from your computer.

PRINT

The print controller is currently printing.

The print data rasterized in the print controller is now being transferred to the E-RDH memory in the main body printer.

ERROR

The print controller generated an error message.

WAIT

The main body printer is in warm-up mode.

INITIALIZING

The print controller is in initialization process.

● Job Status Screen

When you touch the [STATUS] key on the Basic Screen, the [Job Status Screen] will be displayed and you can confirm the status of a print job.

NO.	MODE	STATUS	TOTAL PAGE(S)	PAGE(S) TO GO	MINUTE(S) TO GO	CONTROLLER INFORMATION
		*** RESERVE JOB DOES NOT EXIST ***				
		*** RESERVE JOB DOES NOT EXIST ***				
		*** RESERVE JOB DOES NOT EXIST ***				
		*** RESERVE JOB DOES NOT EXIST ***				
		*** RESERVE JOB DOES NOT EXIST ***				

Buttons: JOB PRIORITY, JOB DELETE, USER NAME CHECK, PREVIOUS JOB LIST, NONCOMPLETE JOB LIST, OK

Contents of the Job Status Screen are as follows:

NO.

Displays the No. (1-99) for each job (print/copy/scan) assigned to the machine.

MODE

Displays the current operation mode of the printing system:

COPIER

PRINTER

SCANNER

STATUS

Displays the current status of the machine for each job:

[Indication]

[Meaning]

READY

Ready to use in each mode

ERROR

Error in each mode

PRINTING

Output in each mode

RESERVE

Ready to reserve

NO PAPER

No paper in paper tray in copy/print mode

STOP

Stop in each mode

JAM

Jam in each mode

INTERRUPT

Interrupting the previous job

TOTAL PAGE(s)

Displays the number of print originals for each job. (0 - 9999)

PAGE(s) TO GO

Displays the remaining print count of the job.

0 to 9999 (The number exceeding 9999 will be displayed as 9999 ↑ .)

MINUTE(s) TO GO

Displays the time (in minutes) required for completing the job.

1 to 999

Exceeding 999 minutes: 999 ↑

Shorter than 1 minute: <1

Other

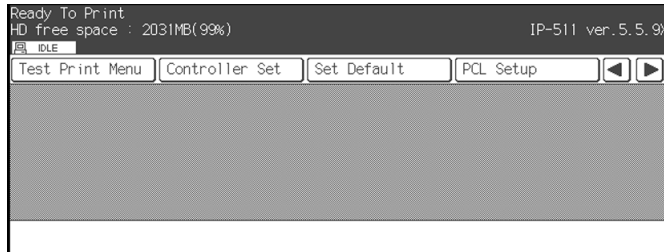
The following message will be displayed on the bar when the reserved job does not exist.

RESERVED JOB DOES NOT EXIST

● Printer Mode Basic Screen

When the printing system starts properly, the Printer Mode Basic Screen (main menu screen) is displayed on the LCD by pressing the [MODE] button.

When the [MODE] button is pressed again, the LCD is changed to the Copy Mode Basic Screen, and the normal copy settings becomes available.



The following settings can be selected from the Printer Mode Basic Screen.

[Test Print Menu]

Display the Test Print Setup Screen. You can print the test print by selecting this item.

[Controller Set]

Display the Controller Set Screen. You can perform various settings related to the Print Controller.

[Set Default]

Display the Print Job Setup Screen. You can return various settings to the factory default by selecting this item.

[PCL Setup]

Display the PCL Setup Screen. You can perform various settings related to PCL.

[Password Print]

Display the Password Print Screen. The password print job to be set up from the printer driver is printed after entering the password from the LCD touch screen.



[Network Setup]

[Network Setup] screen will appear. For a detailed explanation of the setup procedure, refer to "Network Setup" in your INSTRUCTION MANUAL.

[Scan Error List]

[Scanner Error List] screen will appear. For a detailed explanation of the list, refer to "Network Scanner" in your INSTRUCTION MANUAL.

See "Configuration of Printer Setting Menu" or "Functions of the Printer Setting" on printer setting.

 (p.4-10),  (p.4-11)

For details on the password print, refer to "Print Job-Password Print (Confidential Output)".

 (p.4-22)

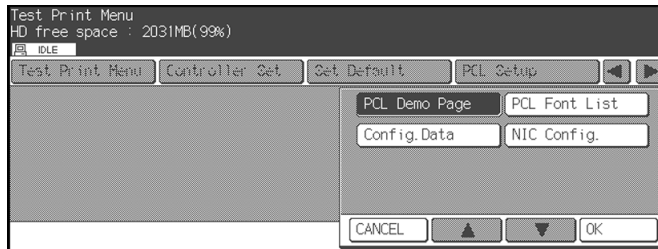
Procedures of the Printer Setting

You can select or change settings from the LCD by touching a key on the LCD touch screen.

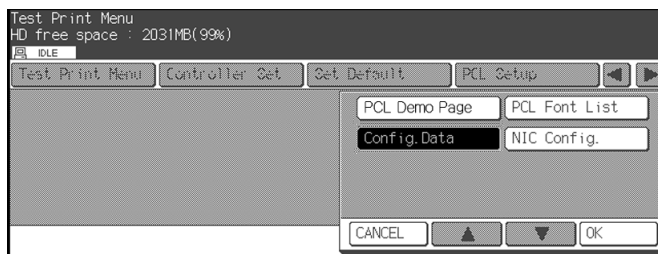
Item Selection and Appearance of Selected Items

Various settings are performed by touching a icon of the item you would like to select on the LCD. Currently selected items are displayed with reverse color.

As a result of selecting [PCL Demo Page] of [Test Print Menu]



As a result of selecting [Config. Data] of [Test Print Menu]



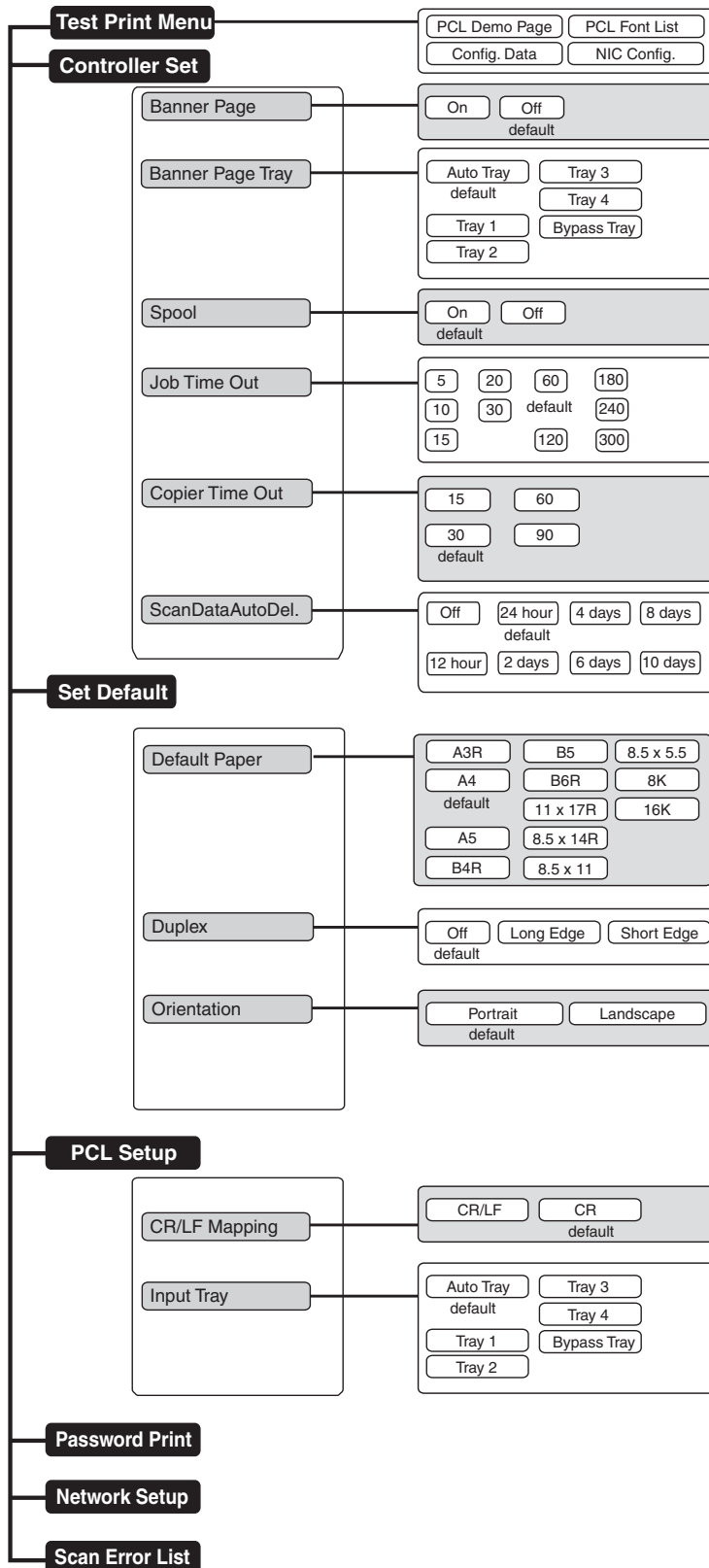
How to set the Banner Page On

1. Press the [MODE] key to show the [Printer Mode Basic Screen].
The [Copy Mode Basic Screen] is switched to the [Printer Mode Basic Screen].
2. Touch the [Controller Set] key.
The [Printer Mode Basic Screen] is switched to the [Controller Set Screen].
3. Touch the [Banner Page] key.
4. Touch the [OK] key.
The setting screen of the selected item is displayed.
5. Touch the [ON] icon.
6. Touch the [OK] icon.
[Controller Set] - [Banner Page] - [ON] is configured.

Key Operation

- [◀] [▶] Touch the [◀] / [▶] key to display the main menu item.
 - [▲] [▼] Touch the [▲] / [▼] key to display the sub menu item or setting item.
 - [CANCEL] Touch the [CANCEL] key to cancel the current setting and to return to the upper menu screen.
- A setting selected by pressing [OK] key becomes available.

■ Configuration of Printer Setting Menu

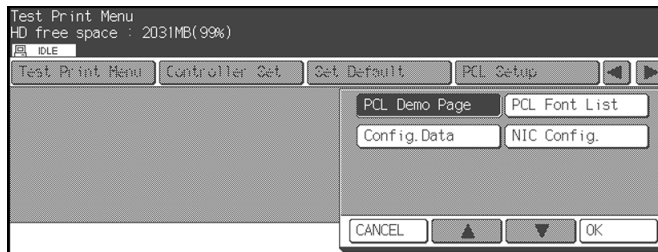


■ Functions of the Printer Setting

● Test Print Menu

Select [Test Print Menu] from the Printer Mode Basic Screen to display the Test Print Setup Screen.

Setting items are as follows:



[PCL Demo Page]

Select [PCL Demo Page] to print the PCL Demo Page immediately.

[PCL Font List]

Select [PCL Font List] to print the PCL Font List immediately.

[Config. Data]

Select [Config. Data] to print the System Configuration data immediately.

Items of the Config. Data are as follows:

- Version info
- Current Settings (Resolution / Print Quality / Copy mode timeout / Default Paper size / Language)
- Installed Paper (Manual / Tray1 / Tray2 / Tray3 / Tray4)
- Device Status (Total RAM installed / Hard disk free space)
- Miscellaneous (PCL pages printed)

[NIC Config.]

Outputs information about the network settings. For details on this, refer to "Network Setup" in your INSTRUCTION MANUAL.

● Controller Set

MEMO

To enable the settings, it is necessary to turn OFF/ON the main body printer.

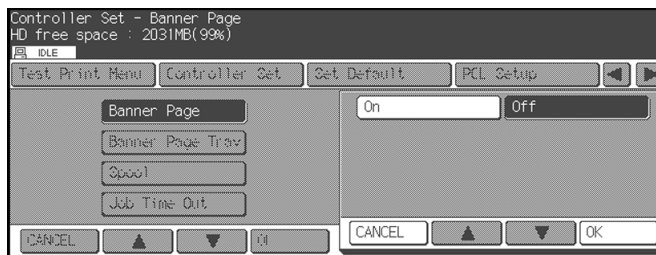
Select [Controller Set] on the Printer Mode Basic Screen to display the Print Controller Setup Screen.

Setting items are as follows:

[Banner Page]

Select [Banner Page] to set the Banner Page.

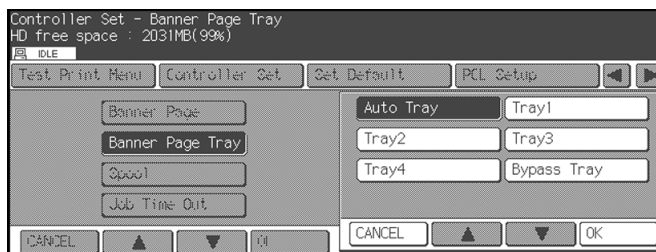
Setting items are as follows:



- On : prints the Banner Page prior to the set of print jobs
- Off : (Default)

[Banner Page Tray]

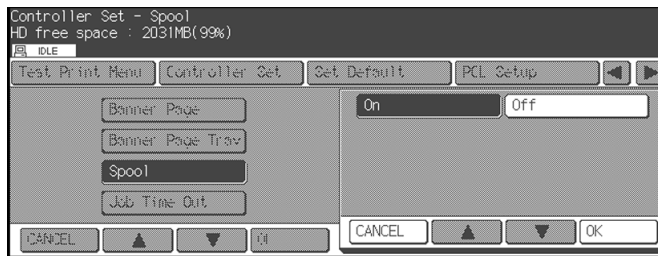
Select [Banner Page Tray] to set the tray for Banner Page.



[Spool]

Select [Spool] to set the Spool condition.

Setting items are as follows:



- On : spool waiting print job queue within HDD
- Off : interpreter within the print controller processes the print job without spooling (Default)

[Job Time Out]

Select [Job Time Out] to set the Job Timeout value. When it reaches the job timeout value without receiving print job data or without any communication between the printing system and your computer, the printing system ends the job.

Setting values are as follows:

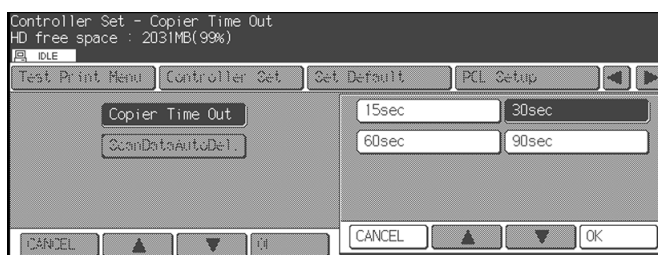


- 5 / 10 / 15 / 20 / 30 / 60 (Default) / 120 / 180 / 240 / 300 (unit: seconds)

[Copier Time Out]

Select [Copier Time Out] to set the Copier Timeout value. When it reaches the Copier Timeout value after operations for copy on the control panel of the main body printer, the print controller can receive print job data.

Setting values are as follows:



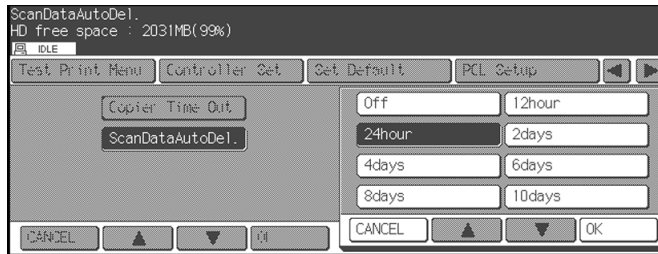
- 15 / 30 (Default) / 60 / 90 (unit: seconds)

Chapter 4 Control Panel Setup

[ScanDataAutoDel.]

Select [Scan Data AutoDel.] to set the Scan Data AutoDel. condition.

Setting values are as follows:



- Off / 12 hour / 24 hour (Default) / 2 days / 4 days / 6 days / 8 days / 10 days
- Off: The scan data held in the print controller's hard disk is not deleted automatically

● Set Default

MEMO

It is not necessary to turn OFF/ON the main body printer.

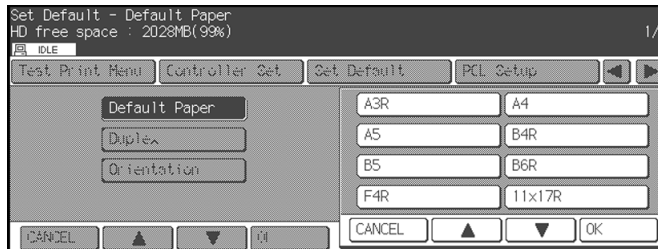
Select [Set Default] on the Printer Mode Basic Screen to display the Print Job Setup Screen.

Setting items are as follows:

[Default Paper]

Select [Default Paper] to set the default paper size.

Setting items are as follows:

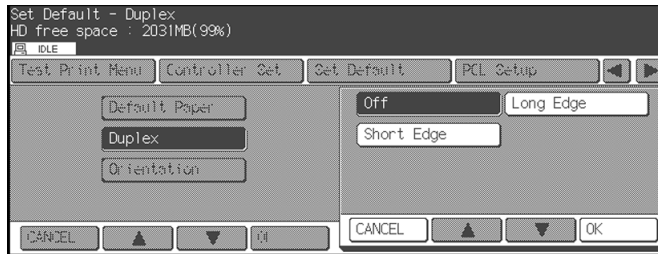


- A3R / A4 (Default) / A5 / B4R / B5 / B6R / F4R / 11 x 17R / 8.5 x 14R / 8.5 x 11 / 8KR / 16K / 5.5 x 8.5 / A6R / 8K / 16K

[Duplex]

Select [Duplex] to set the default Duplex.

Setting items are as follows:

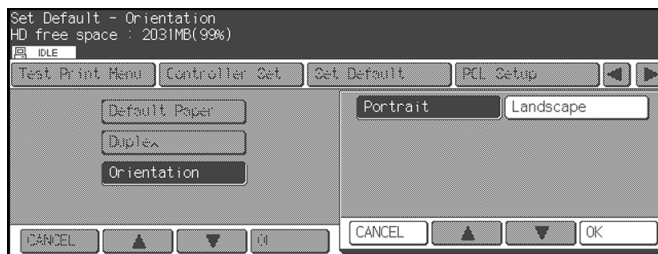


- Off : set the Duplex off (Default)
- Long Edge : set the Long Edge Duplex
- Short Edge : set the Short Edge Duplex

[Orientation]

Select [Orientation] to set the default Orientation.

Setting items are as follows:



- Portrait : set the Orientation to Portrait (Default)
- Landscape : set the Orientation to Landscape

● PCL Setup

MEMO

It is not necessary to turn OFF/ON the main body printer.

Select [PCL Setup] from the Printer Mode Basic Screen to display the PCL Setup Screen.

Setting items are as follows:

[CR/LF Mapping]

Select [CR/LF Mapping] to set the CR/LF Mapping.

Setting items are as follows:

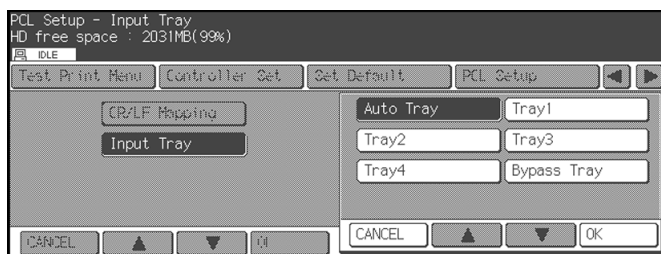


- CR/LF : replace line ending LF code to CR/LF
- CR : does not convert line ending code (Default)

[Input Tray]

Select [Input Tray] to set the Input Tray.

Setting items are as follows:



- Auto Tray (Default)
- Tray 1
- Tray 2
- Tray 3
- Tray 4
- Bypass Tray

■ Print Job

● Cancel

You can stop the job reserved or the job in progress. If the job is still on your computer first, delete the job from your computer and press the [STOP / CLEAR] key on the control panel. You cannot stop the remaining job completely by only pressing the [STOP / CLEAR] key. The [STOP / CLEAR] key can clear the memory of the print controller and E-RDH in the main body printer but will not clear the remaining jobs on your computer.

How to cancel the job

1. While a job is currently printing, touch the [Stop] key to cancel the job.

The confirmation screen will appear.

2. Touch the [EXIT] to confirm the cancelation.

Touch the [CONTINUE] to continue printing without canceling the job.

NON COMPLETE JOB LIST

You may want to view a list of the print jobs that have not output because of cancellation or deletion from the queue.

To do this, touch [NON COMPLETE JOB LIST] in the Job Status Screen.

The list is displayed with job names, user names, file names, status, etc.

● Check

You can check the current job settings and see how the printed job will look using the Wait Mode on the printer driver screen to print out only one set of the print job before printing out multiple sets.

How to check the job - Wait Mode - Proof:

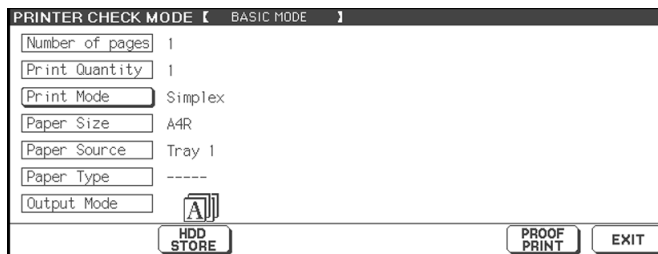
This method prints one set of the print job for checking after checking the settings on the control panel.

On your computer:

1. Right click the printer icon and then click the properties to display the printer properties dialog.
2. Select [Wait Mode] from the upper list of [Features] in [Paper] tab of the printer properties window and select [Proof] from the list by clicking the [▼] button of the lower box of the [Features].
3. Print.

On the control panel:

4. The [Printer Check Mode Screen] will appear on the LCD touch screen and no printing is performed.



[HDD STORE] appears only when the optional HDD is installed in the main body printer.

5. Confirm the current settings.
6. Change setting values of [Print Quantity], [Duplex Mode] or [Image Shift], if necessary.

- **How to change [Print Quantity]**

Enter the value from the keypad on the control panel when the [Printer Check Mode Screen] appears.

- **How to change [Duplex Mode]**

To show the [Basic Screen], touch the [Duplex Mode]. Set the [Duplex Mode] on the [Basic Screen]. To return to the [Printer Check Mode Screen], press the [CHECK] button on the control panel.

- **How to change [Image Shift]**

MEMO

Available only when [On] is selected in [Image Shift] of printer driver.

To show the [Image Shift Screen], touch the [Image Shift]. Set the [Image Shift] on the [Image Shift Screen]. To return to the [Printer Check Mode Screen], touch [EXIT] on the [Image Shift Screen].

- 7. Touch the [PROOF PRINT] to print one copied set for proofreading.**
- 8. Touch the [Exit] to return to the print mode basic screen.**
- 9. Press [START] to resume the rest of the print job.**

When you change the settings, press [STOP] to cancel the print job, and change the settings on the printer properties on your computer.

How to check the job - Wait Mode - Wait:

This method is used only for confirming the settings on the control panel without printing.

On your computer:

- 1. Right click the printer icon and then click the properties to display the printer properties dialog.**
- 2. Select [Wait Mode] from the upper list of [Features] in [Paper] tab of the printer properties window and select [Wait] from the list by clicking the [▼] button of the lower box of the [Features].**
- 3. Start to print.**

On the control panel:

- 4. The settings are displayed on the LCD.**

The [Printer Check Mode Screen] will appear on the LCD touch screen and no printing is performed.
- 5. Confirm the current settings.**

Change setting values of [Print Quantity], [Duplex Mode] or [Image Shift], if necessary.
(Refer to the above mentioned procedure : How to check the job - Wait Mode - Proof, 6.)
- 6. Press [START] button to resume the rest of the print job.**

When you change the settings, press [STOP] to cancel the print job, and change the settings on the printer properties on your computer.

● Interrupt / Reserve

The Interrupt mode can be used to interrupt the current printing operation to perform a copying job. The Interrupt mode can be selected when the engine is receiving print data or when printing is already in progress.

Under some conditions of printing or Finisher settings, the Interrupt mode cannot be used.

How to interrupt

- 1. Press the [INTERRUPT] key when the print job is in progress.**
- 2. Place new original(s) on the platen glass or in the document feeder.**
- 3. Press [START] key to start Interrupt Copying .**
- 4. After copying is completed, press the [INTERRUPT] key again to enable the engine to resume the interrupted print job.**

MEMO

If the [INTERRUPT] key is pressed while receiving the job data, Interrupt mode will become available after the receiving is complete.

If the [INTERRUPT] key is pressed while printing is in progress, Interrupt mode will become available after the current set of print job is completed.

MEMO

Even without pressing the [INTERRUPT] key again, interrupted print job will resume automatically on the following conditions:

- AUTORESET is activated and it reaches the set value.
- When the interrupt release timer which works 1 minute after INTERRUPT job is complete, is activated.

The interrupt release timer works when AUTORESET is not activated

How to use Reserve function

- 1. Touch the [FREE] folder to set the conditions for a copying job.**
- 2. This copying job will be performed after the print job in progress is completed.**

● Forced Output

When the tray runs out of preset size papers, or when the tray does not contain papers whose size meets the demand from the printer driver, the printing system displays a message prompting the user to load additional papers.

The process by which the user selects, when the prompt appears, a different size of papers on the operation panel and lets the print work continue on these papers, is referred to as "Forced Output."

Forced Output Procedure

- 1. Make sure that the LCD touch screen shows a message prompting the user to load additional papers of proper size.**
- 2. Touch and select the desired size displayed in the paper sizes area.**
- 3. Press the [START] button.**
- 4. The printout is made on the selected size papers.**

MEMO

When you choose not to use Forced Output, delete the print job, and change the setting concerned on the application, or set the requested size of papers in the tray.

● Password Print (Confidential Output)

A Confidential Output feature enables you to password protect specific print jobs. The printing process starts only when you enter a password on the control panel of the main body printer; a password you set up when transferring a print job from your computer.

This feature allows you to manage confidential documents without worrying about someone else having access to them.

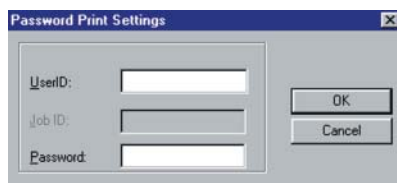


With some application software, the setting for the printer driver also is saved. When you use [Settings] to print out a sharing file on a network or a file that is likely to be printed out by other people as well, save those files after deleting the [UserID] and [Password].

Password Print (Confidential Output) Procedures

On your computer:

1. **Display the Printer Properties dialog.**
2. **Put a check in [Password Print] on the [Paper] tab of the Printer Properties dialog.**
[Password Print Settings] dialog appears.



If you have already set up the password on the [Password Print Settings] dialog, go to step 6.

3. **Enter your user ID in the [UserID] text box.**
You can select any eight-digit number for user ID.

MEMO

Providing the Printer EKC feature has been set on the copier, [User ID] set up in the [Settings] dialog is recognized as a password for Printer EKC.

Provided a Printer EKC feature has been set on the copier, you can enter the same number in the [User ID] text box as that representing your password for Printer EKC.

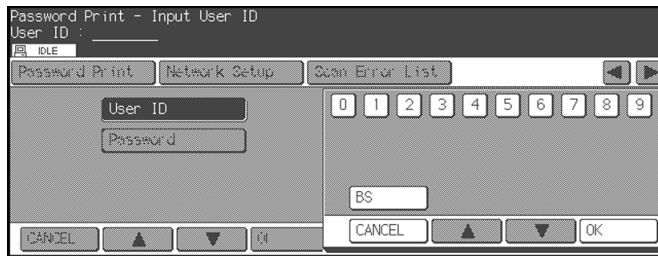
For Printer EKC, refer to " Chapter 5 Printer EKC".

 ●●> (p.5-1)

4. **Enter your password in the [Password] text box.**
You can select any eight-digit number or character for your Password.
5. **Click the [OK] button.**
If you click the [Cancel] button, [Password Print] check box will be [OFF] and Password Print (Confidential Output) will not be performed.
6. **Set up the other functions if necessary, then print.**

On the control panel:

7. Press the [MODE] button to display the print mode basic screen and display [Password Print] touch key.



8. Enter your user ID using the numeric keys, and touch the [OK] key.
The ID is displayed with the [Password] key highlighted.
9. Enter your password using the numeric, CAPITAL or SMALL keys, and touch the [OK] key.
If no capital letters are displayed, you can touch the [CAPITAL] key to display them.
If no small letters are displayed, you can touch the [SMALL] key to display them.
If no numbers are displayed, you can touch the [BS] key to display them.
When you touch the [OK] key, a list of the corresponding print jobs is displayed.



If there is no applicable print job.



10. Select the print job you need, and touch the [Print] key.

The print process starts.

You can specify multiple jobs to print out at one time.

Deleting Password Print Jobs

You can delete print jobs once set for Password Print (Confidential Output).

To do this, in the window appearing in step 10 under the heading of "Password Print (Confidential Output) Procedures", select the print job you want to delete, and touch the [Delete] key.

MEMO

When any option other than [OFF] is selected from [Controller Set]-[ScanDataAutoDel.], the print job producing password print is automatically deleted several hours after being sent to the print controller from the copier.

● Job Combination

You can combine and print the data held in the print controller's hard disk as a result of the [HD-105 Image Storage] settings on the printer driver and/or using the Copier in store mode.



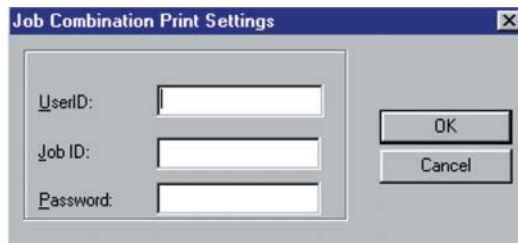
With some application software, the setting for the printer driver also is saved. When you use [Job ID / Password] to print out a sharing file on a network or a file that is likely to be printed out by other people as well, save those files after deleting the [Job ID] and [Password].

Job Combination Procedures

On your computer:

1. Get the Printer Properties dialog displayed.
2. Put a check in [HD-105 Image Storage] on the [Options] tab of the Printer Properties dialog.
3. Click the [Settings] button.

[Job Combination Print Settings] dialog appears.



When you have already set up the job ID and the password on the [Job Combination Print Settings] dialog, go to step 7.

4. Enter your User ID on the [UserID] text box.

You can select any eight-digit number for user ID.

MEMO

If the Printer EKC has been set up, this User ID is identified as a password for the Printer EKC. The Printer EKC is discussed in "Chapter 5 Printer EKC".

 ●●▶ (p.5-1)

5. Enter your Job ID on the [JobID] text box.
You can select any eight-digit number for job ID.
6. Enter your password in the [Password] text box.
You can select any eight-digit number or character for Password.
7. Click the [OK] button.
8. Set up the other functions if necessary, then start to print.

On the control panel:

Refer to the manual of the copier for how to perform the job combination settings from the control panel of the copier.

Chapter 5 Printer EKC

■ Overview of the Printer EKC	5-2
-------------------------------------	-----

■ Overview of the Printer EKC

Printer EKC is the feature use to manage the number of prints on the copier.

Setting the Printer EKC feature means that, provided you enter a password previously established on the printer to request a print job, the copier counts the printouts on the EKC counter to know when a preset limit is hit, and rejects print request from clients without a password.

● Setting of Printer EKC

A password for Printer EKC and its counter are set in the copier's key operator settings. For guidance in setting Printer EKC, refer to the copier INSTRUCTION MANUAL.

MEMO

A password for Printer EKC must be the same as User ID to enter at printing out time.

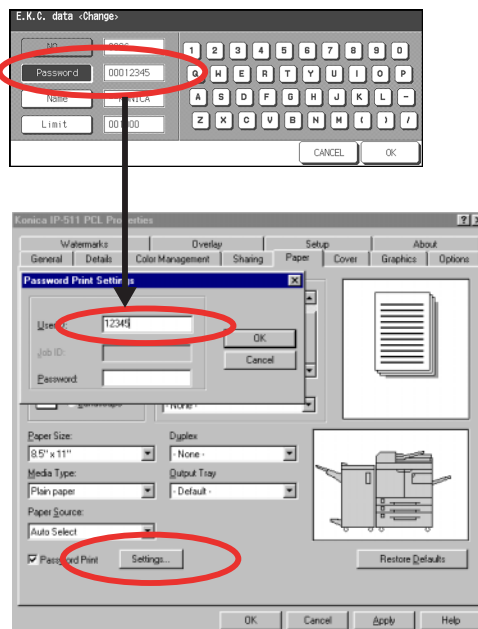
● Printing with Printer EKC

If Printer EKC has been set, perform the following steps to get an output.

1. Select the [Paper] tab in the printer driver properties window, and click the [Settings] key.
[Password Print Settings] dialog will appear.
2. Type in the user ID set up in Printer EKC into the User ID text box.



With some application software, the setting for the printer driver also is saved. When you use [Settings] to print out a sharing file on a network or a file that is likely to be printed out by other people as well, save those files after deleting the [UserID] and [Password].



MEMO

You must enter the same password (8 digits or less) in the User ID text box that you set up on the copier for Printer EKC.

If you do not enter the correct password or if you leave the User ID text box blank, the print job is not performed and is registered as non complete job. When in doubt about the password for Printer EKC, ask your system administrator.

3. Click [OK] to close the Properties and start the printing process.

●EKC Limit

If you exceed the limit previously set in the Printer EKC, the following will occur, depending on the settings of the Printer EKC.

When in doubt about the Printer EKC settings, ask your system administrator.

When a print job is transmitted after reaching a limit:


- A message will appear indicating that the EKC counter reached a preset limit, but the printing process is completed normally and the EKC counter increments as if nothing happened.
- No output is produced and the job is registered on the non complete job list.

If the EKC counter hits a preset limit in the process of getting an output:

- A message will appear indicating that the EKC counter reached a preset limit, but the printing process is completed normally and the EKC counter increments as if nothing happened.
- After the current print job is completed, no additional jobs are accepted. If you try to transmit the next print job, it is deleted and registered on the non complete job list.
- The print job instantly stops, causing the already fed paper to be output. The job is registered on the non complete job list.

MEMO

A print job deleted by the Printer EKC feature is registered on the non complete job list. For information on checking the No complete job list screen, refer to "Troubleshooting".

 ●●▶ (p.Appendix A-1)

Appendix A Troubleshooting

- **Basic Troubleshooting Appendix A-2**
- **General Problems of Printing Appendix A-3**
- **Troubles Concerning the Scanner Appendix A-6**
- **Checking on Non complete job Appendix A-7**

■ Basic Troubleshooting

This section describes how to troubleshoot. If problems are not resolved by using the following counter-measures, contact your Konica service representative.

First check the following ordinary causes of abnormalities:

- 1. Check the power of the main body printer (copier), computers and cable connections.**
- 2. Check the LCD touch screen of the main body printer to find information concerning the current trouble.**
- 3. If possible, print the Test Print from the LCD of the main body printer to check that the settings are appropriate.**
- 4. Check the current status of the print controller.**
 - Check the current status shown on the LCD of the control panel.
 - Touch the [STATUS] key on the Basic Screen to check the job status.
 - When your job is being processed or waiting to be printed;

Windows:

The current status is displayed on the dialog shown by double-clicking [Start] - [Settings] - [Printers] - printing system currently used.

■ General Problems of Printing

● The Print Controller does not respond to the Print command.

1. Check that the printing system is selected as a current printer.


It is a requirement that the printing system is selected as a present printer on Windows before printing.

2. Check that the power switch of the copier is turned on.

3. Print the Test Page from Windows.

When you can not print a job from a computer even though you can print a test print, contact a system administrator or a service representative.

4. If a message "Controller HD Full" is displayed.

 ●●> (p.Appendix A-5)

5. Check that the control panel is not set up in scanner mode but in copy mode.

● A message requesting a paper size you do not use is displayed.

- Cancel the job to change the paper size of "Page (Paper) Setup" dialog on your application.
- Touch and select the desired size displayed in the paper sizes area of the control panel, then press the [START] button. The forced out will start.

Refer to "Chapter 4 Control Panel Setup Forced Output" for forced output.

 ●●> (p.4-21)

● You cannot print the test print.

1. Check the LCD of the main body printer control panel.

When "Ready to copy" is displayed on the LCD, go to Step 3.

When a diagnostic message or an error message is displayed on the LCD, refer to the operating manual of the main body printer (copier).

When the LCD is blank, go to Step 2.

2. Press the POWER SAVER ON/OFF on the control panel.

When the main body printer is used in the Power Save mode, press this switch to show the LCD in the Display mode.

3. Try to make a copy.

When copying is available, go to Step 4.

4. Turn off the copier and restart it. Print the test print again after the print controller is ready.

Contact your Konica service representative if you cannot print the test page after performing the above procedures.

● The print setting of a job does not correspond to the result of printing.

1. Check that the printer setting is not changed.

Refer to "Chapter 3 Function List" for the printer setting.

 (p.3-7)

● Memory Overflow

1. Depending on the functions selected in the printer driver, occasional memory overflow may occur if the volume of the print job is large. In this case the print job is cancelled.

e.g., Booklet, Fold & Stitch, 2 in 1, etc.

In case of frequent Memory Overflow it is recommended that you extend the memory capacity in the main body printer (copier).

When an error message "Print Controller Memory Overflow" is displayed on the LCD Touch Screen using Duplex printing or Application function, you may cancel the print job and try to reprint with another function.

● HD Full

Hard-disk full occurs when 1% of total disk capacity is used by the print/scan jobs. If the disk capacity is 2 GB, the HD Full is 20 MB free space.

Under the HD Full condition, the following message is displayed on the front panel of the main body printer.

Printer HD Full

Please free HD space

- 1. Remove the scan job in the HD on network computer.**
Refer to "Network Scanner " in your INSTRUCTION MANUAL for deletion the scanned data.
- 2. Output the password print job in the HD from control panel.**
- 3. When the [24 hour] is selected in the [Print Controller Setup] - [ScanDataAutoDel.] on the control panel of the copier, the print controller automatic timer deletes from the HD jobs which exist for more than 24 hours.**

Under HD Full:

The print job can not be printed.

If the scan job starts, the job is canceled automatically. The following message is displayed on the control panel.

Printer HD Full

Scan JOB was canceled

You may want to view the scan job canceled at this time.

To do this, touch [NON COMPLETE JOB LIST] in the Job Status Screen.

■ Troubles Concerning the Scanner

● Cannot connect to the scanner

When an error dialog appears when attempting to access the scanner, perform the following checks:

- 1. Check whether the correct IP address of the scanner has been entered.**

If the entered IP address is not correct, enter the correct one.
If the entered IP address is correct, go on to step 2.
- 2. From the DOS prompt run a ping test through the destination host to the IP address of the scanner.**

If the ping test fails, check whether the copier's main power is switched on, and also check the network cable for proper connection.
If the ping test is successful, go on to step 3.
- 3. Check whether the IP router is correctly set.**

If it is not correctly set, set it correctly.
If there is no problem in IP router setup, go on to step 4.
- 4. Trace the routing to the scanner to check whether there are any error conditions within the network.**

If any error conditions are found, eliminate them.
If no error is found and yet the connection to the scanner cannot be established, contact your service representative.

■ Checking on Non complete job

If print jobs are not output, you can check them on the Non complete Job List screen.

To get the Non complete Job List screen to appear:

1. Press the [STATUS] key on the printer mode base screen to get the Job Status Screen to appear, and then press the [NON COMPLETE JOB LIST] key.

The Non complete Job List screen will appear.

You can scroll the list up/down with the [s] [t] keys.

Content of Non complete Job List

On the Non complete Job List you can check on the mode, file and application names, as well as the causes of non complete jobs.

Here is a list of Non complete Job List content.

Mode	Factor	Description of causes
PRINTER	Cancel	Stopped with STOP/CLEAR. Deleted from Joblist. W/O key count/set. Interruption request from print controller. Job aborted. Prohibited by Web count. Copy prohibited before examination. Error in memory.
	ID Differ	Job not output because User ID did not match.
	Limit over	Job not output because Printer EKC reached a preset limit.
	Mem Full	Job not output because copier ran out of memory.
SCANNER	HD Full	Job not completed in uploading data to hard disk.
	Cancel	Stopped with STOP/CLEAR. Deleted from Job List. W/O key count/set. Interruption request from print controller. Job aborted.

MEMO

You can return to the Joblist screen from the Non complete Job List screen by pressing the [STATUS] key.

When switching the copier's main power OFF, Non complete jobs in the Non complete Job List screen are deleted.

MEMO

Providing the Printer EKC feature has been set on the copier, [User ID] set up in the [Settings] dialog is recognized for a password for Printer EKC.

Provided a Printer EKC feature has been set on the copier, you can enter the same number in the [User ID] text box as that representing your password for Printer EKC.

For Printer EKC, refer to "Chapter 5 Printer EKC".

 ●●▶ (p.5-1)

Appendix B Product Specifications

■ Product Specifications.....	Appendix B-2
-------------------------------	--------------

Appendix B Product Specifications

■ Product Specifications

Type:	Built-in box type for the Konica 7155 / 7165 Printer/Copier
Paper:	5.5X8.5 / 8.5x11 / 8.5x14 / 11x17 / A3 / A4 / A5 / A6 / B4 / B5 / B6 / F4 / 8K / 16K / 5.5X8.5W / 8.5x11W / 11x17W / A3W / A4W / A5W / B4W / B5W
Paper Feeding and Amount of Feeding Paper:	Same as the copier
Load Output Paper:	Same as the copier
Mode:	The dual operation of the copier and the printer is available (5 jobs, including scanning jobs, can be processed at the maximum.)
Special Printing:	Offset, Staple Function, Combination, Punch Function, Fold and Stitch Function, Wait Mode Function, Image Shift Function, Password Printing, Chapter, Image Storage, Form Overlay Function, Front/Back Cover Function, etc.
Orientation:	Portrait and Landscape
Resolution:	Printing System: 600 x 600 dpi Scanning System: 200 dpi / 300 dpi / 400 dpi / 600 dpi
Gradation:	1 bit
No. of Print:	1 to 9999
Continuous print speed:	65 ppm (A4, 8.5 x 11) / (with Konica 7165: 600 x 600 dpi) *1 55 ppm (A4, 8.5 x 11) / (with Konica 7155: 600 x 600 dpi) *1
Printable Area:	Standard: Top and Bottom Margins: 4.0 mm Right and Left Margins: 4.0 mm Wide Size: Margins 0 mm (unlike standard size's)
Warm-up time:	Same as the copier
Basic Configuration:	
CPU:	Intel Celeron 566 MHz
System Memory:	64 MB SD-RAM (Standard), Expandable up to 192 MB (Option: MU-404 / MU-405)
Host Interface:	Parallel port Centronics (IEEE 1284 / amphenol 36 pin male connector)
Network Interface:	Ethernet (100Base-TX / 10Base-T)
Printer Description Language:	PCL5e Adobe PS3 (optional PS3 kit required)
Built-in fonts:	Agfa Microtype fonts

Appendix B Product Specifications

Compliant OS:	Windows 95/98/Me Windows NT 4.0 (NT Service Pack 3 or more) Windows 2000 Mac OS 7.1 or more (optional PS3 kit required)
Printer Driver:	Printer driver for Windows 95/98/Me/NT 4.0/2000 PS printer driver for Windows (optional PS3 kit required) PS printer driver for Macintosh (optional PS3 kit required)
Compliant Host Computer:	A Windows-based computer Macintosh (optional PS3 kit required)
Option:	PS-351 (PostScript Option) memory: MU404 (64 MB) / MU-405 (128 MB)
Dimension:	190 mm(W) x 240 mm(D) x 35 mm(H) 7.5" (W) x 9.5" (D) x 1.4" (H)
Weight:	Approx. 2.3 kg Approx. 5 pounds
Power:	Supplied from the copier
Working Environment:	Temperature: 10 degree °C to 30 degree °C 50 degree °F to 86 degree °F Humidity: 10 % to 80 %RH (non-condensing)

Restrictive Conditions

- Although the Weekly Timer function of the main body printer is available in the Printer mode, the power is not turned off until the data output is finished when print data remains in the E-RDH.

*1 Numbers in the case of continuous printing following the storage of all pages in E-RDH memory, or numbers in the case of printing the same image on multiple papers.

Note: Specifications are subject to change without notice.

Appendix C Font List

■ Internal Font List	Appendix C-2
----------------------------	--------------

■ Internal Font List

Konica IP-series Printer

Internal Fonts list

Courier ABCDEFGHIJKLMNOPQ12345
CG Times ABCDEFGHIJKLMNOPQ12345
CG Times Bold ABCDEFGHIJKLMNOPQ12345
CG Times Italic ABCDEFGHIJKLMNOPQ12345
CG Times Bold Italic ABCDEFGHIJKLMNOPQ12345
CG Omega ABCDEFGHIJKLMNOPQ12345
CG Omega Bold ABCDEFGHIJKLMNOPQ12345
CG Omega Italic ABCDEFGHIJKLMNOPQ12345
CG Omega Bold Italic ABCDEFGHIJKLMNOPQ12345
Coronet ABCDEFGHIJKLMNOPQ12345
Claredon Condensed ABCDEFGHIJKLMNOPQ12345
Univers Medium ABCDEFGHIJKLMNOPQ12345
Univers Bold ABCDEFGHIJKLMNOPQ12345
Univers Medium Italic ABCDEFGHIJKLMNOPQ12345
Univers Bold Italic ABCDEFGHIJKLMNOPQ12345
Univers Medium Condensed ABCDEFGHIJKLMNOPQ12345
Univers Bold Condensed ABCDEFGHIJKLMNOPQ12345
Univers Medium Condensed Italic ABCDEFGHIJKLMNOPQ12345
Univers Bold Condensed Italic ABCDEFGHIJKLMNOPQ12345
Antique Olive ABCDEFGHIJKLMNOPQ12345
Antique Olive Bold ABCDEFGHIJKLMNOPQ12345
Antique Olive Italic ABCDEFGHIJKLMNOPQ12345
Garamond Antiqua ABCDEFGHIJKLMNOPQ12345
Garamond Halbfett ABCDEFGHIJKLMNOPQ12345
Garamond Kursiv ABCDEFGHIJKLMNOPQ12345
Garamond Kursiv Halbfett ABCDEFGHIJKLMNOPQ12345
Marigold ABCDEFGHIJKLMNOPQ12345
Albertus Medium ABCDEFGHIJKLMNOPQ12345
Albertus Extra Bold ABCDEFGHIJKLMNOPQ12345
Arial ABCDEFGHIJKLMNOPQ12345
Arial Bold ABCDEFGHIJKLMNOPQ12345
Arial Italic ABCDEFGHIJKLMNOPQ12345
Arial Bold Italic ABCDEFGHIJKLMNOPQ12345

Times New ABCDEFGHIJKLMNOPQ12345
Times New Bold ABCDEFGHIJKLMNOPQ12345
Times New Italic ABCDEFGHIJKLMNOPQ12345
Times New Bold Italic ABCDEFGHIJKLMNOPQ12345
 Helvetica ABCDEFGHIJKLMNOPQ12345
Helvetica Bold ABCDEFGHIJKLMNOPQ12345
Helvetica Oblique ABCDEFGHIJKLMNOPQ12345
Helvetica Bold Oblique ABCDEFGHIJKLMNOPQ12345
 Helvetica Narrow ABCDEFGHIJKLMNOPQ12345
Helvetica Narrow Bold ABCDEFGHIJKLMNOPQ12345
Helvetica Narrow Oblique ABCDEFGHIJKLMNOPQ12345
Helvetica Narrow Bold Oblique ABCDEFGHIJKLMNOPQ12345
 Palatino Roman ABCDEFGHIJKLMNOPQ12345
Palatino Bold ABCDEFGHIJKLMNOPQ12345
Palatino Italic ABCDEFGHIJKLMNOPQ12345
Palatino Bold Italic ABCDEFGHIJKLMNOPQ12345
 ITC Avant Garde Book ABCDEFGHIJKLMNOPQ12345
ITC Avant Garde Demi ABCDEFGHIJKLMNOPQ12345
ITC Avant Garde Book Oblique ABCDEFGHIJKLMNOPQ12345
ITC Avant Garde Demi Oblique ABCDEFGHIJKLMNOPQ12345
 ITC Bookman Light ABCDEFGHIJKLMNOPQ12345
ITC Bookman Demi ABCDEFGHIJKLMNOPQ12345
ITC Bookman Light Italic ABCDEFGHIJKLMNOPQ12345
ITC Bookman Demi Italic ABCDEFGHIJKLMNOPQ12345
 New Century Schoolbook Roman ABCDEFGHIJKLMNOPQ12345
New Century Schoolbook Bold ABCDEFGHIJKLMNOPQ12345
New Century Schoolbook Italic ABCDEFGHIJKLMNOPQ12345
New Century Schoolbook Bold Italic ABCDEFGHIJKLMNOPQ12345
 Times Roman ABCDEFGHIJKLMNOPQ12345
Times Bold ABCDEFGHIJKLMNOPQ12345
Times Italic ABCDEFGHIJKLMNOPQ12345
Times Bold Italic ABCDEFGHIJKLMNOPQ12345
ITC Zapf Chancery Medium Italic ABCDEFGHIJKLMNOPQ12345
 symbol ΑΒΧΔΕΦΓΗΙϕκλμνρπθ12345
 symbols ΑΒΧΔΕΦΓΗΙϕκλμνρπθ12345
 Wingdings 
Courier Bold ABCDEFGHIJKLMNOPQ12345
Courier Italic ABCDEFGHIJKLMNOPQ12345
Courier Bold Italic ABCDEFGHIJKLMNOPQ12345
 Letter Gothic ABCDEFGHIJKLMNOPQ12345
Letter Gothic Bold ABCDEFGHIJKLMNOPQ12345
Letter Gothic Italic ABCDEFGHIJKLMNOPQ12345

Appendix C Font List

CourierPS ABCDEFGHIJKLMNOPQ12345

CourierPS Bold ABCDEFGHIJKLMNOPQ12345

CourierPS Oblique ABCDEFGHIJKLMNOPQ12345

CourierPS Bold Oblique ABCDEFGHIJKLMNOPQ12345

Line Printer ABCDEFGHIJKLMNOPQ12345

Index

- | | | | |
|--|--------------|---------------------------------|--------------|
| A | | P | |
| Add Printer | 2-8 | Pages per sheet | 3-31 |
| Available options | 3-41 | Paper Size | 3-15 |
| B | | Parallel | 1-5 |
| Back Cover | 3-27 | Password Print | 3-18, 4-22 |
| C | | PI Cover Sheet | 3-29 |
| Chapter | 3-32 | Print Data Flow | 1-4 |
| Collate | 3-14 | Printer EKC | 5-2 |
| Combination | 3-21 | Properties | 3-3 |
| Compliant OS | 3-2 | Punch | 3-23 |
| Contrast | 3-30 | S | |
| Control Panel | 4-2 | Scaling | 3-32 |
| D | | Screen Fonts | 2-18 |
| Description of Functions | 3-13 | Sheet Insertion | 3-27 |
| Duplex | 3-17 | Staple | 3-20 |
| E | | T | |
| EKC Limit | 5-3 | Test Page | 2-17 |
| Ethernet | 1-5 | Troubleshooting | Appendix A-2 |
| F | | TrueType options | 3-32 |
| Fold & Stitch | 3-25 | U | |
| Front Cover | 3-26 | Uninstalling the Printer Driver | |
| Function List | 3-7 | Windows 95/98/Me | 2-12 |
| H | | Windows NT4.0..... | 2-13 |
| HD Full | Appendix A-5 | Windows 2000 | 2-15 |
| HD-105 | 3-34 | W | |
| I | | Wait Mode | 3-25 |
| Installation of the Printer Driver | | Watermarks | 3-36 |
| Installing to Windows 95/98/Me..... | 2-3 | | |
| Installing to Windows NT4.0/2000 | 2-7 | | |
| L | | | |
| LCD Touch Screen | 4-4 | | |
| M | | | |
| Media Type | 3-16 | | |
| Memory | 1-7 | | |
| Memory Overflow | Appendix A-4 | | |
| N | | | |
| Negative | 3-30 | | |
| O | | | |
| Offset | 3-19 | | |
| Output Tray | 3-17 | | |
| Overlay | 3-39 | | |
| Overview | 1-2 | | |

MANUFACTURER



KONICA CORPORATION



TOKYO JAPAN

2001.11
IP511PRN_INT_v110

Free Manuals Download Website

<http://myh66.com>

<http://usermanuals.us>

<http://www.somanuals.com>

<http://www.4manuals.cc>

<http://www.manual-lib.com>

<http://www.404manual.com>

<http://www.luxmanual.com>

<http://aubethermostatmanual.com>

Golf course search by state

<http://golfingnear.com>

Email search by domain

<http://emailbydomain.com>

Auto manuals search

<http://auto.somanuals.com>

TV manuals search

<http://tv.somanuals.com>