

Kramer Electronics, Ltd.



**Site-CTRL and
Web Access
Online User Guide
(Documentation Revision 2)**

Software Version 1.9. 2902

To check that you have the latest version, go to the
DOWNLOADS section of our Web site at:

<http://www.kramerelectronics.com/support/downloads.asp>

Contents

1	Introduction	1
2	Site-CTRL	1
2.1	Loading the Software	2
2.2	The Room List Tab	3
2.3	The Settings Tab	5
2.3.1	The Event Log Tab	7
2.4	The Site-CTRL Menu	8
3	Web Access	9
3.1	The Main Page	10
3.1.1	The Master Room Controller Page	11
3.1.2	The Auxiliary Controller Page	12
3.1.3	The Devices Tab	13
3.1.4	The Macro Tab	14
3.1.5	The Scheduled Tasks Tab	15
3.1.6	The Settings Tab	18

Figures

Figure 1:	The Room List Tab – for the Administrator	3
Figure 2:	The Room List Tab – for the User	3
Figure 3:	The Settings Tab – for the Administrator	5
Figure 4:	The Settings Tab – for the User	5
Figure 5:	Add an E-mail Address	6
Figure 6:	The IP List	6
Figure 7:	The Alert Group List	6
Figure 8:	The Alert Type List	6
Figure 9:	The Event Log Tab	7
Figure 10:	Entering the IP Number in the Address Bar	9
Figure 11:	Web Access Login	9
Figure 12:	Web Access Main Page (User)	10
Figure 13:	Web Access SV-551 Settings (User)	11
Figure 14:	Web Access SV-551 Settings (Admin)	11
Figure 15:	Web Access RC-63DL Settings (User and Administrator)	12
Figure 16:	Web Access Main Page (Admin)	13
Figure 17:	Web Access Main Page with Connected Ports	13
Figure 18:	Web Access Protocol Commands	14
Figure 19:	Web Access Macro Buttons (User and Admin)	14
Figure 20:	Scheduled Tasks Tab as Set in K-Config	15
Figure 21:	Scheduled Tasks Tab	16
Figure 22:	Adding a Macro to the Schedule	16
Figure 23:	Macro Added to the Schedule	16
Figure 24:	Select a Macro to Modify	17
Figure 25:	Schedule Changes Window	17
Figure 26:	Web Access Settings Tab (User)	18
Figure 27:	Web Access Settings Tab (Admin)	18



Tables

Table 1: The Room List Features	4
Table 2: The Settings Tab Features	6
Table 3: The Event Log Features	7
Table 4: Site-CTRL Menu	8
Table 5: User and Administrator Available Operations using Web Access	9

1 Introduction

Welcome to Kramer Electronics! Since 1981, Kramer Electronics has been providing a world of unique, creative, and affordable solutions to the vast range of problems that confront the video, audio, presentation, and broadcasting professional on a daily basis. In recent years, we have redesigned and upgraded most of our line, making the best even better! Our 1,000-plus different models now appear in 11 groups¹ that are clearly defined by function.

This user manual is intended for **Site-CTRL™** and **Web Access** users. The installation and configuration procedures are described in a different manual².

2 Site-CTRL

Kramer **Site-CTRL** is a powerful A/V assets management tool. It offers real-time monitoring and control of Kramer Master controllers³ installed in an A/V site and the A/V equipment connected to them. The Kramer **Site-CTRL** downloadable version can monitor and control up to 100 Kramer Master controllers⁴.

Kramer **Site-CTRL**:

- Generates a single page summary of the entire installed A/V site
- Reports the communication status for each room
- Reports the status of the local display devices
- Reports the remaining lamp life for projectors
- Supports easy access to the built-in Web pages of Master controllers via **Web Access**
- Raises alerts and sends e-mails when prompted by a user-defined special event

1 GROUP 1: Distribution Amplifiers; GROUP 2: Switchers and Matrix Switchers; GROUP 3: Control Systems; GROUP 4: Format/Standards Converters; GROUP 5: Range Extenders and Repeaters; GROUP 6: Specialty AV Products; GROUP 7: Scan Converters and Sealers; GROUP 8: Cables and Connectors; GROUP 9: Room Connectivity; GROUP 10: Accessories and Rack Adapters; GROUP 11: Sierra Products

2 Download up-to-date Kramer user manuals and guides from the Internet at this URL: <http://www.kramerelectronics.com>

3 For example, the Kramer SL-1, SL-10, SL-12, SV-551, SV-552 and WP-500 master controllers

4 A similar solution for larger installations is also available. Consult your local Kramer support team for details



The easy-to-use Kramer **Site-CTRL** consists of three main tabs: Room List, Settings¹ and Event Log.

The Room List tab displays the status of the Kramer room controllers in a summarized layout, and lets you identify the room by its IP number, name (for example, Science Lab 1), or description. From this screen the user can also monitor the status of the display (on, standby and so on), monitor the projector lamp hours (per room) and perform routine procedures such as initiating a simple ON/OFF macro (via **Web Access**, see [Section 3](#)), as well as switching a display device to the standby mode.

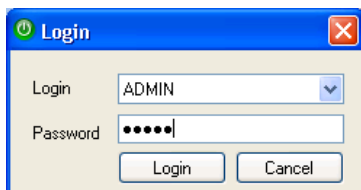
For remote operation of more room specific functions, the user can easily access—via the Room List display—the dynamic Web pages² of the Kramer Master controllers (for example, the Kramer **SV-551 BrainBox™**) installed in the monitored rooms.

Using the Kramer **Site-CTRL** with the Kramer Master room controllers lets the installer and the user easily achieve effective control over the A/V site.

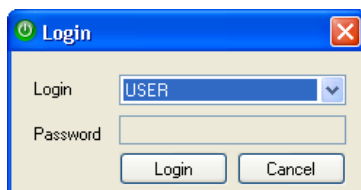
2.1 Loading the Software

After installation, you can click the **Site-CTRL** icon on your desktop or you click the START icon on your desktop. You will be prompted to enter your user name and password³ to login:

For the administrator:



For the user:



After logging in, the Room List tab appears.

1 For the system Administrator only

2 Via the Web Access software

3 The factory default password is admin. The password can be changed via the Settings tab

2.2 The Room List Tab

The Room List tab lists the status of the rooms controlled by the **Site-CTRL** system. [Figure 1](#) and [Table 1](#) define the Room List tab features and functions. [Figure 2](#) shows the Room List tab for the user.

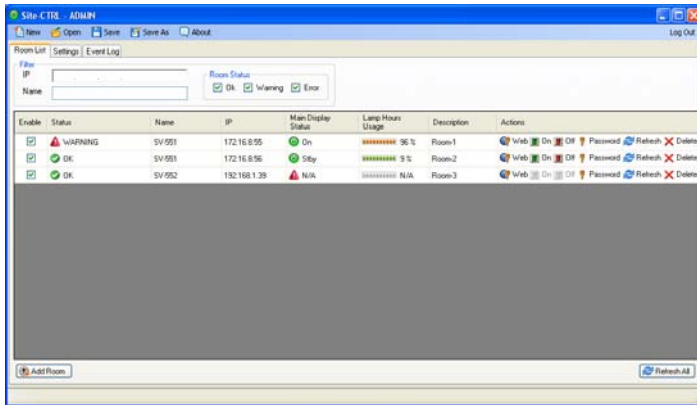


Figure 1: The Room List Tab – for the Administrator

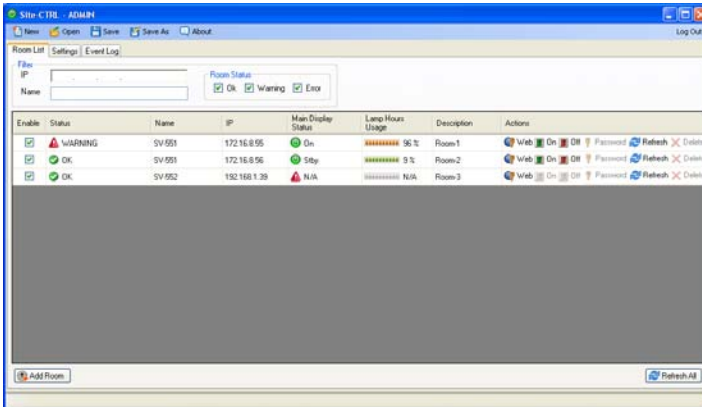


Figure 2: The Room List Tab – for the User

Table 1: The Room List Features

Features		Function
Filter Area	IP	Lets you observe only a room with a certain IP number
	Name	Lets you observe defined room names only ¹
	Room Status	Select the room status types to be displayed (OK, Warning and/or Error)
Room list area		
Enabled	Enables access to the different actions related to the room (for the administrator only)	
Status	Indicates the room status	
Name	Indicates the room name	
IP	Indicates the IP address of the room controller	
Main Display Status	Indicates the status of the main display (for example, the room projector)	
Lamp Hours Usage	Shows the lamp hours (in percentage) of the projector lamp	
Description	Shows the room description (entered by the administrator via the Settings tab)	
Actions	Displays the actions you may take with this room controller: Web – Open the Web Access page (see Section 3) On – activates the All On event macro ² Off – activates the All Off event macro ² Password – change the password for accessing the machine (for the administrator only) Refresh – refresh the information line Delete – delete the information line (for the administrator only)	
Add Room	Add a new room to the list (for the administrator only)	
Refresh All	Refresh this window	

¹ The name is case sensitive

² Defined in the K-Config software

2.3 The Settings Tab

The settings tab is mainly intended for the administrator. The user can only set the language (English or Russian) and check the Write Minor Log Events box.

The Settings tab lets you set an e-mail notification in case of a defined event for a certain room or certain type of problem, and set the Handshake interval between the different rooms. [Figure 3](#) and [Table 2](#) define the features and functions of the settings tab. [Figure 4](#) shows the Settings tab for the user.

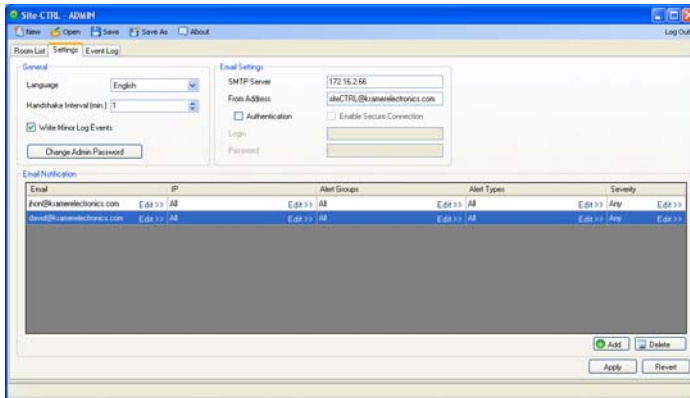


Figure 3: The Settings Tab – for the Administrator

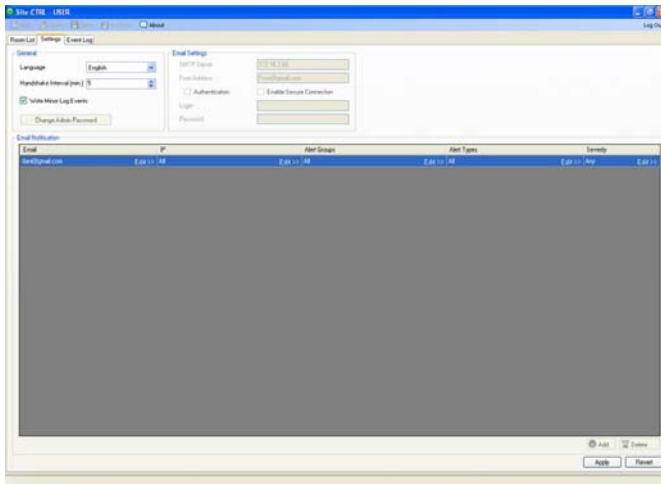


Figure 4: The Settings Tab – for the User

Table 2: The Settings Tab Features

Features	Function
General Area	Language: select English or Russian (available also for the user)
	Check to Write Minor Log Events (available also for the user)
	Handshake Interval [min]: set the communication test rate (available also for the user)
	Change Admin Password: click to change the password
Email Settings Area	SMTP Server - the SMTP server address through which the e-mail is sent
	From Address: the name by which the user is identified
	Authentication check box: further authentication for entering the server
	Login: enter username if further authentication is required
	Password: enter password if further authentication is required
	Enable Secure Connection
Email Notification Area	Email – set the e-mail address for event notification (see Figure 5)
	IP- e-mail will be sent regarding a selected list of IP numbers (see Figure 6)
	Alert Groups – set the alert groups that will induce an e-mail (see Figure 7)
	Alert Types – set the alert types that will induce an e-mail ¹ (see Figure 8)
	Severity – set the severity of the event that will induce an e-mail

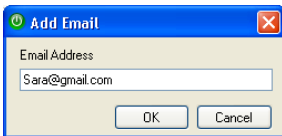


Figure 5: Add an E-mail Address

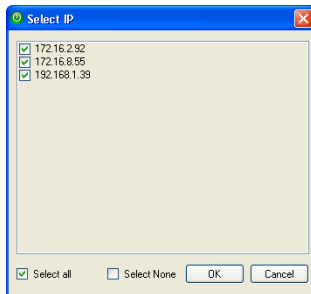


Figure 6: The IP List

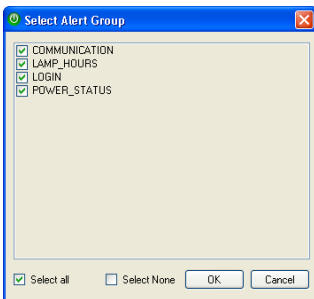


Figure 7: The Alert Group List

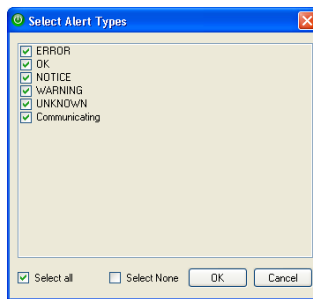


Figure 8: The Alert Type List

¹ For example, different people will get an e-mail for different alarm groups

2.3.1 The Event Log Tab

The Event Log tab lists the controlled room events. The Filter area lets you filter the information displayed. [Figure 9](#) and [Table 3](#) define the Event Log tab:

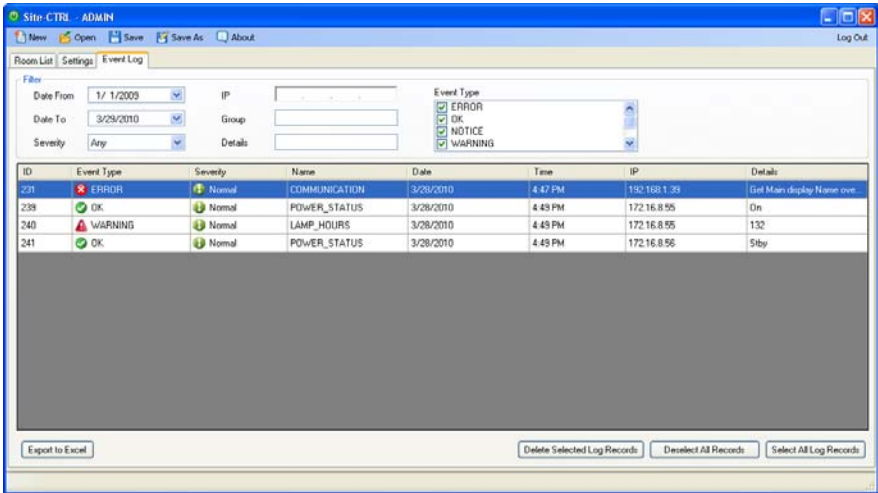


Figure 9: The Event Log Tab

Table 3: The Event Log Features

Features	Function
Filter area:	
	Date from/Date to: set the time frame for the list
	Severity: filter the severity you want displayed
	IP: set the IP number you want displayed
	Group: set the name group you want displayed (not case sensitive)
	Details: set the details you want displayed (not case sensitive)
	Event types: select the event types you want displayed
Event Log list:	
	Lists the events according to the filters used: Event type Severity Name (filtered via Group) Date Time IP Details (sent to the software from the device)
Export to Excel	Export the list of events to an excel file
Delete Selected Log Records	Delete the selected lines (not available to the user)
Deselect All Records	Clear selection
Select All Log Records	Select all the lines

2.4 The Site-CTRL Menu

The **Site-CTRL** menu is available only for the Administrator¹. [Table 4](#) defines the **Site-CTRL** menu.

Table 4: Site-CTRL Menu

Menu Item	Function
New	Clears the room list and the settings
Open	Opens an existing Site-CTRL configuration
Save	Save configuration
Save as	Save configuration in a new name
About	Revision information

¹ Except for About which is available also to the user

3 Web Access

Web Access lets you monitor and control the room and is automatically generated by Kramer K-Config.

You can login to **Web Access** either via the **Site-CTRL** Room List tab (see [Section 2.2](#)) or via your Internet browser.

To enter **Web Access** via your Internet browser, make sure that your PC is connected via a network to the Room Controller, and do the following:

1. Open your Internet browser.
2. Enter the unit's IP number¹ in the Address bar of your browser.



Figure 10: Entering the IP Number in the Address Bar

3. You will be prompted to enter your user name (User or Admin) and password² to login:



Figure 11: Web Access Login

The administrator can control the room via **Web Access**, performing tasks such as scheduling, switching inputs, setting the audio and so on. The tasks available for the user are limited. [Table 5](#) summarizes the tasks performed by the User and the Administrator:

Table 5: User and Administrator Available Operations using Web Access

Tasks	User	Administrator
Master Room Controller	Click inputs/configurable buttons, audio adjustment	Select buttons, audio adjustment, advanced audio settings
Auxiliary Controller	Click configurable buttons	Click configurable buttons
Device Serial commands	Click serial command	Click serial command
Macros	Activate	Activate
Scheduled Tasks	No access	Write, delete and edit tasks
Settings	View only	Change: Name (Master and Auxiliary devices), IP Address, DHCP, Gateway, Subnet Mask, Date, Time

¹ The default IP number is 192.168.1.39, and may be changed by the system integrator

² The factory default password is admin. The password can be changed via Kramer K-Config

3.1 The Main Page

After logging in, the **Web Access** main page appears:

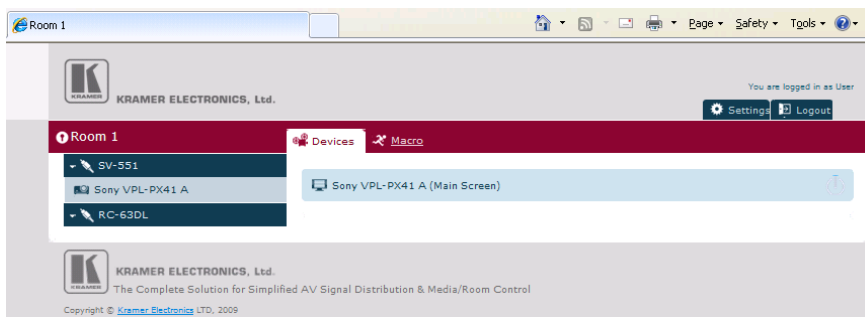


Figure 12: Web Access Main Page (User)

The main page lists the devices that are set up in the controlled room, such as the:

- Master room controller (for example, the **SV-551**)
- Auxiliary controller (for example, the **RC-63DL**)
- Devices that are connected to the control ports of the Master room controller¹ or to the ports of the Auxiliary controller (for example, a Sony projector)

The main page includes the:

- Master Room Controller front panel buttons and settings, see [Section 3.1.1](#)
- Auxiliary controller front panel buttons, see [Section 3.1.2](#)
- The Devices tab, see [Section 3.1.3](#)
- The Macro tab, see [Section 3.1.4](#)
- The Scheduled Tasks tab (for the Admin), see [Section 3.1.5](#)

¹ Defined via the Port Manager window in Kramer K-Config

3.1.1 The Master Room Controller Page

The Master room controller page shows the options available for the Master room controller in use. For example, when using a master room controller which includes an audio amplifier (such as the **SV-551/SV-552**) you will be able to switch the inputs as well as adjust the audio settings per input.

To enter the Master room controller page click the Master room controller button (**SV-551** in this example). The following screen appears:

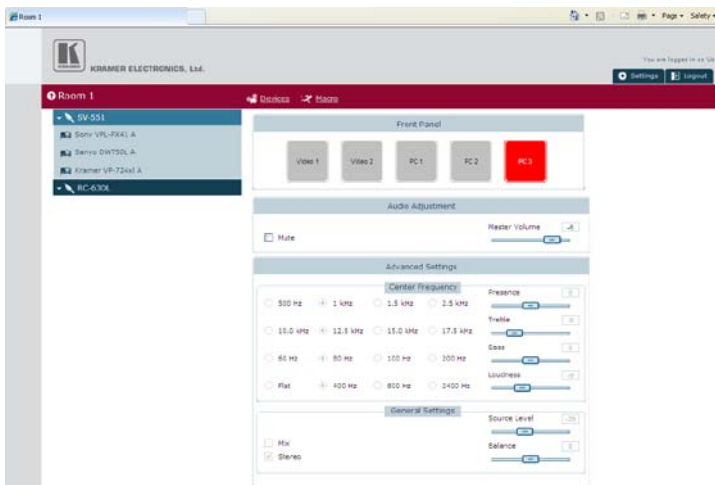


Figure 13: Web Access SV-551 Settings (User)

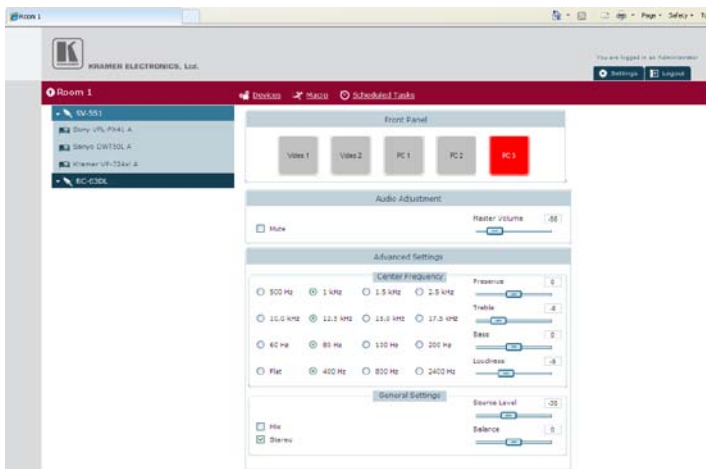


Figure 14: Web Access SV-551 Settings (Admin)

In this example, the User can:

- Press the front panel buttons to switch inputs
- Adjust the master volume

Other tasks are unavailable for the user.

The Administrator can:

- Press the front panel buttons to switch inputs
- Adjust the master volume.
- Perform advanced audio settings per input, such as setting the center frequencies, setting the balance and so on

3.1.2 The Auxiliary Controller Page

The Auxiliary controller page displays the front panel of the Auxiliary device, as shown in [Figure 15](#).

To enter the Auxiliary controller page click the Auxiliary controller button (RC-63DL in this example). The following screen appears:

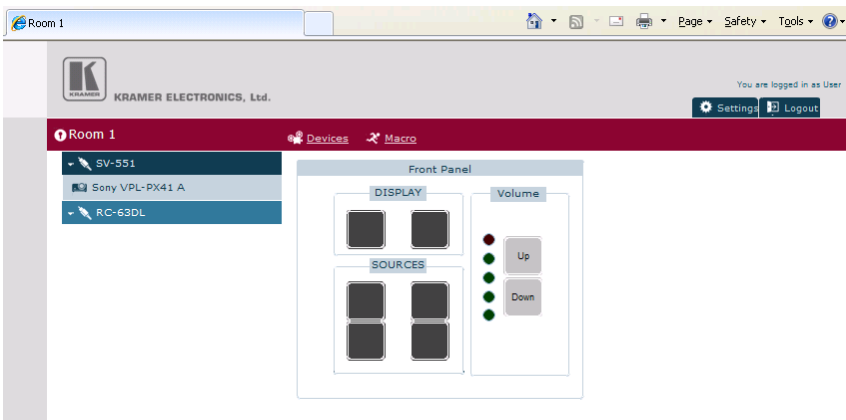


Figure 15: Web Access RC-63DL Settings (User and Administrator)

3.1.3 The Devices Tab

The Devices tab lets you access the driver commands of a device that is on the list. The device at the top of the list is defined to appear first via the Kramer K-Config software.

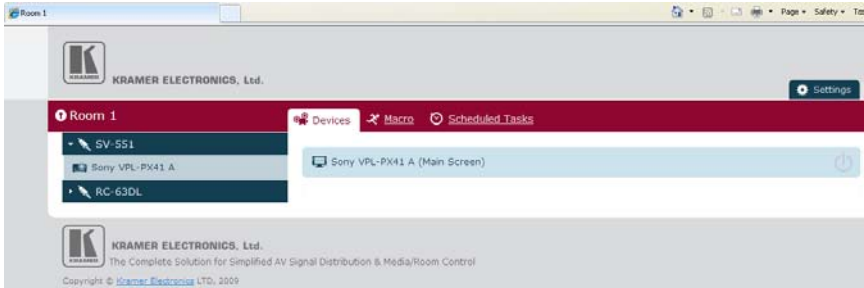


Figure 16: Web Access Main Page (Admin)

The main page lists the Master room controller (for example, the **SV-551**), the Auxiliary controller (for example, **RC-63DL**) with the display device that was assigned to the main port¹ (for example, a Sony projector).

If more than one device driver is assigned to the ports, the main page shows the list of devices² and lets you turn the power ON or OFF via the ON/OFF button located on the right side of each device (see [Figure 17](#)):

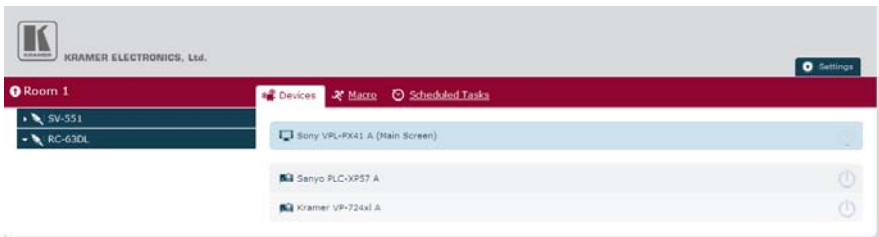


Figure 17: Web Access Main Page with Connected Ports

¹ Via Kramer K-Config

² Clicking the small arrow on the side of the of the Master Controller opens the list of devices (see [Figure 18](#))

To carry out a driver command, do the following:

1. Click a device button to access its driver commands. The following screen appears:

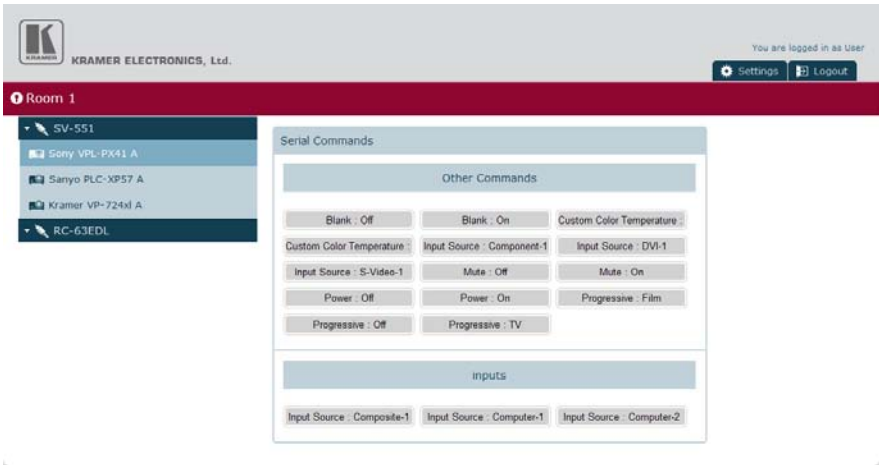


Figure 18: Web Access Protocol Commands

2. Click a protocol command button.

The serial commands are arranged according to groups that are defined via K-Config. Driver commands that are not assigned to a group can be found under “Other commands”.

3.1.4 The Macro Tab

The Macro tab is available to the User and the Administrator. The Macro screen lets you carry out custom macro sequences (triggers) as defined in the K-Config software:

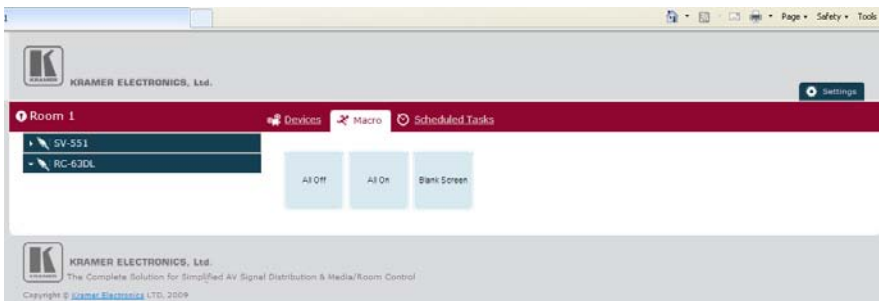


Figure 19: Web Access Macro Buttons (User and Admin)

3.1.5 The Scheduled Tasks Tab

The Scheduled Tasks tab lets you set a weekly schedule. The schedule can be configured either via the K-Config software¹ or directly via **Web Access**.

If the schedule was written to the device via K-Config, it will automatically show in the Scheduled Tasks tab:

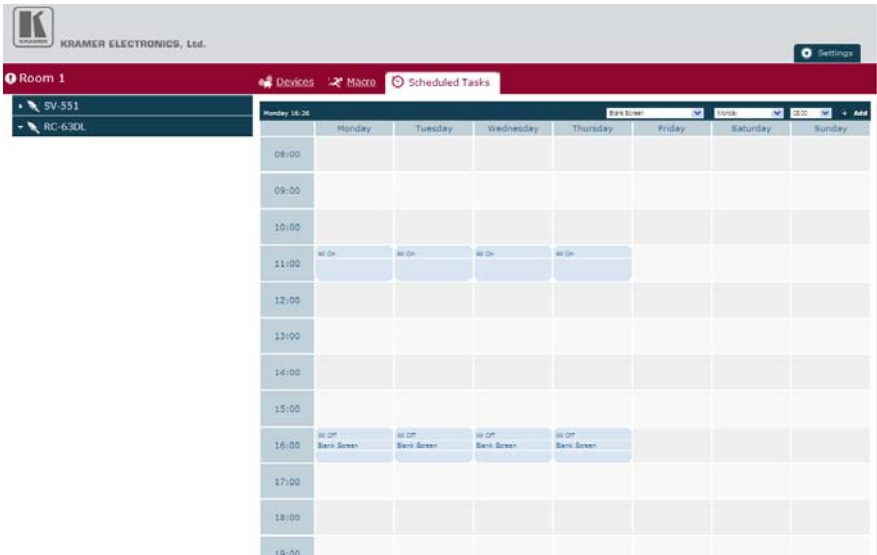


Figure 20: Scheduled Tasks Tab as Set in K-Config

You can also manually edit or delete the existing scheduled tasks and create new ones.

To write the scheduled tasks, do the following:

1. Select the Scheduled Tasks tab.

The following screen appears:

¹ The schedule appears in the Scheduled Tasks tab

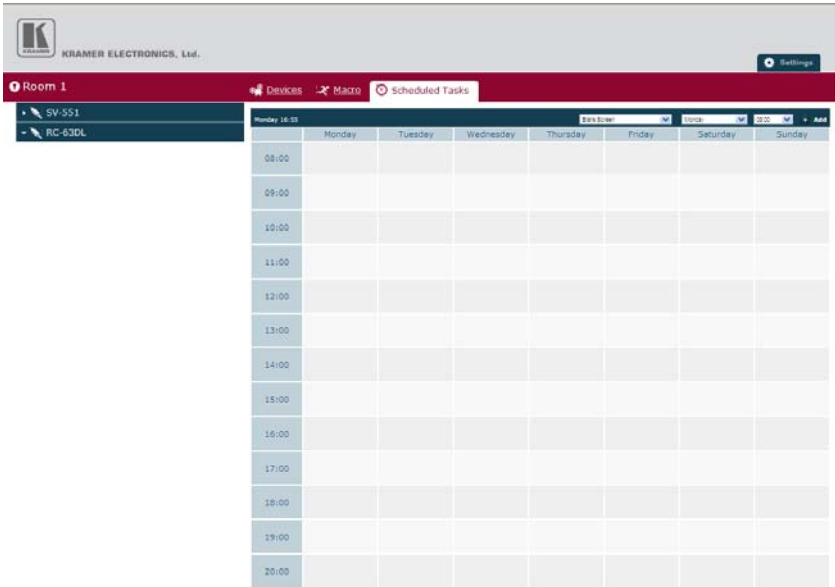


Figure 21: Scheduled Tasks Tab

2. Select the custom trigger (macro) for scheduling, the day of the week and the time, and then click Add:

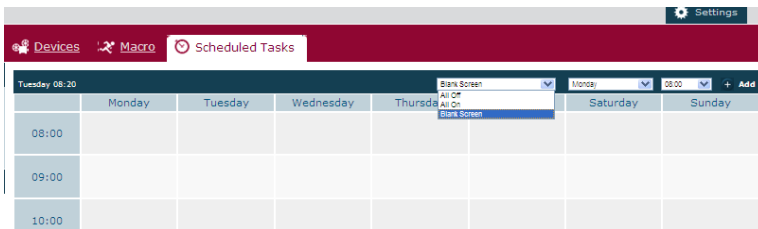


Figure 22: Adding a Macro to the Schedule

The macro is added to the schedule:

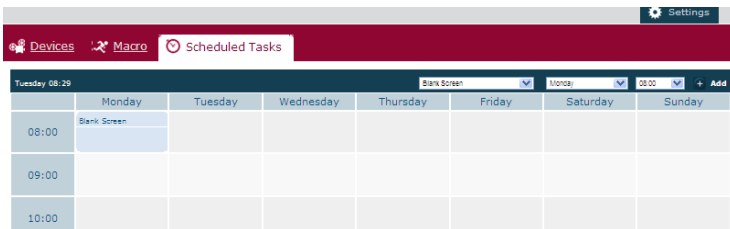


Figure 23: Macro Added to the Schedule

To modify the schedule:

1. Click appropriate area:

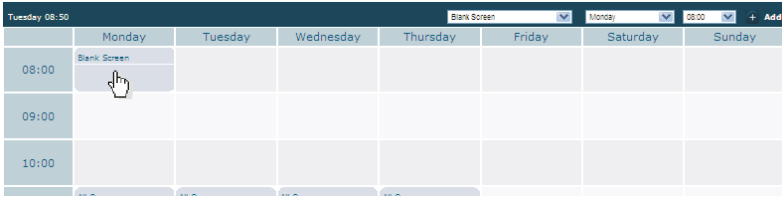


Figure 24: Select a Macro to Modify

The following window appears:

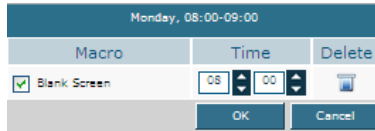


Figure 25: Schedule Changes Window

You can disable the macro, change the time or delete the macro and then click OK.

3.1.6 The Settings Tab

The Settings tab lists the configuration data of the Master and Auxiliary devices. The User cannot change any data in this table:

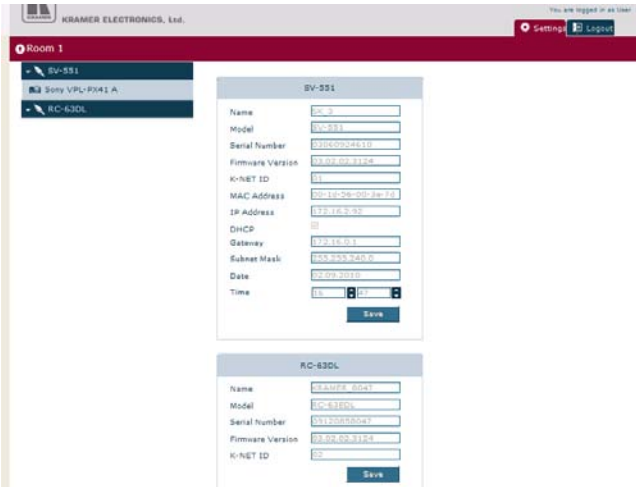


Figure 26: Web Access Settings Tab (User)

Some of the Administration configuration settings can be changed, as shown in [Figure 27](#):

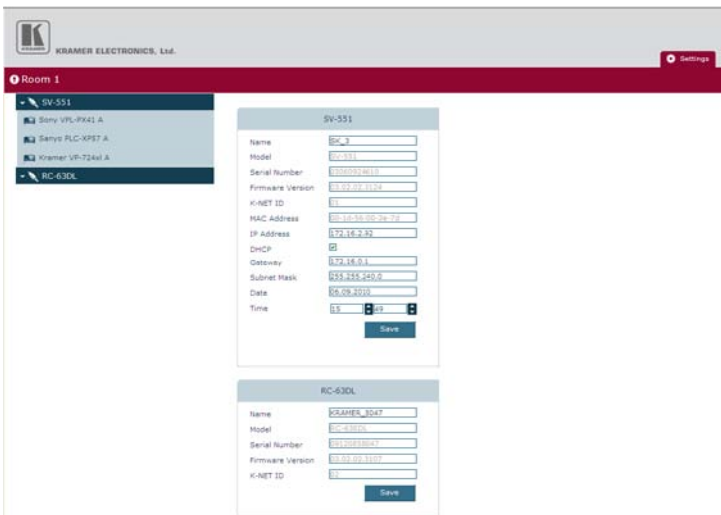
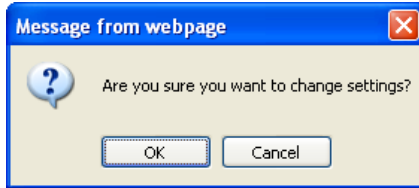


Figure 27: Web Access Settings Tab (Admin)

Warning!

Changing the IP properties of the device (IP Address, DHCP ON/OFF, Gateway or Subnet Mask) through the **Web Access** Setting page will make it unavailable on **Site-CTRL** until the room will be added to the room list (see [Section 2.2](#)) with its updated IP properties

Click Save to accept changes. The following window appears:



Click OK.

Free Manuals Download Website

<http://myh66.com>

<http://usermanuals.us>

<http://www.somanuals.com>

<http://www.4manuals.cc>

<http://www.manual-lib.com>

<http://www.404manual.com>

<http://www.luxmanual.com>

<http://aubethermostatmanual.com>

Golf course search by state

<http://golfingnear.com>

Email search by domain

<http://emailbydomain.com>

Auto manuals search

<http://auto.somanuals.com>

TV manuals search

<http://tv.somanuals.com>