



KRAMER ELECTRONICS LTD.

USER MANUAL

MODEL:

VS-81H
8x1 HDMI Switcher

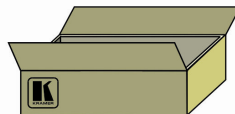
P/N: 2900-000670 Rev 3

VS-81H Quick Start Guide

This page guides you through a basic installation and first-time use of your **VS-81H**. For more detailed information, see the **VS-81H** User Manual. You can download the latest manual at <http://www.kramerelectronics.com>.

Step 1: Check what's in the box

- VS-81H**
- 8x1 HDMI Switcher
- 1 Power cord
- 1 Set of rack "ears"
- 4 Rubber feet
- 1 Quick Start sheet
- 1 User Manual
- Windows®-based Kramer control software
- Windows®-based Ethernet Configuration Manager and Virtual Serial Port Manager
- Kramer **RC-IR3** Infrared Remote Control Transmitter with batteries and user manual



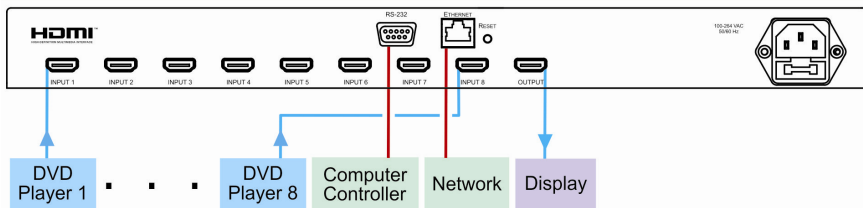
Save the original box and packaging in case your **VS-81H** needs to be returned to the factory for service.

Step 2: Install the VS-81H

Mount the machine in a rack or attach the rubber feet and place on a table.

Step 3: Connect the inputs and outputs

Always switch off the power on each device before connecting it to your **VS-81H**.



Always use Kramer high-performance cables for connecting AV equipment to the **VS-81H**.

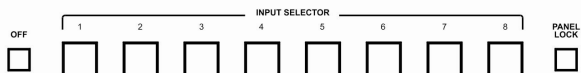
Step 4: Connect the power

Connect the power cord to the **VS-81H** and plug it into the mains electricity.



Step 5: Operate the VS-81H

Select the input, capture the EDID or lock the front panel buttons. Operate the machine from the front panel, IR remote control, RS-232 or over a network.



Contents

| | | |
|----------|---|-----------|
| 1 | Introduction | 1 |
| 2 | Getting Started | 2 |
| 2.1 | Achieving the Best Performance | 2 |
| 3 | Overview | 3 |
| 3.1 | Defining EDID | 4 |
| 3.2 | About HDMI—General Description | 4 |
| 3.3 | About HDCP—General Description | 5 |
| 3.4 | Defining the VS-81H 8x1 HDMI Switcher | 5 |
| 4 | Installing in a Rack | 8 |
| 5 | Connecting the VS-81H | 9 |
| 6 | Operating the VS-81H | 11 |
| 6.1 | The PC and DVD Modes | 11 |
| 6.2 | Acquiring the EDID | 12 |
| 6.3 | Connecting via the RS-232 Port | 13 |
| 6.4 | Connecting via the ETHERNET Port | 13 |
| 7 | Technical Specifications | 16 |
| 8 | Default Communication Parameters | 17 |
| 9 | Protocol 2000 | 18 |

Figures

| | |
|--|----|
| Figure 1: VS-81H 8x1 HDMI Switcher Front Panel | 6 |
| Figure 2: VS-81H 8x1 HDMI Switcher Rear Panel | 7 |
| Figure 3: Connecting the VS-81H 8x1 HDMI Switcher | 10 |
| Figure 4: Local Area Connection Properties Window | 14 |
| Figure 5: Internet Protocol (TCP/IP) Properties Window | 15 |

1 Introduction

Welcome to Kramer Electronics! Since 1981, Kramer Electronics has been providing a world of unique, creative, and affordable solutions to the vast range of problems that confront the video, audio, presentation, and broadcasting professional on a daily basis. In recent years, we have redesigned and upgraded most of our line, making the best even better!

Our 1,000-plus different models now appear in 11 groups that are clearly defined by function: GROUP 1: Distribution Amplifiers; GROUP 2: Switchers and Routers; GROUP 3: Control Systems; GROUP 4: Format/Standards Converters; GROUP 5: Range Extenders and Repeaters; GROUP 6: Specialty AV Products; GROUP 7: Scan Converters and Scalers; GROUP 8: Cables and Connectors; GROUP 9: Room Connectivity; GROUP 10: Accessories and Rack Adapters and GROUP 11: Sierra Products.

Congratulations on purchasing your Kramer **VS-81H 8x1 HDMI Switcher**, which is ideal for the following typical applications:

- Conference room presentations
- Rental and staging

2 Getting Started

We recommend that you:

- Unpack the equipment carefully and save the original box and packaging materials for possible future shipment
- Review the contents of this user manual
- Use Kramer high-performance, high-resolution cables
- Use only the power cord that is supplied with this machine



Go to <http://www.kramerelectronics.com> to check for up-to-date user manuals, application programs, and to check if firmware upgrades are available (where appropriate).

2.1 Achieving the Best Performance

To achieve the best performance:

- Use only good quality connection cables to avoid interference, deterioration in signal quality due to poor matching, and elevated noise levels (often associated with low quality cables)
- Do not secure the cables in tight bundles or roll the slack into tight coils
- Avoid interference from neighboring electrical appliances that may adversely influence signal quality
- Position your Kramer **VS-81H** away from moisture, excessive sunlight and dust

3 Overview

The **VS-81H** is a high-performance switcher for HDMI signals. It reclocks and equalizes the signal and switches one of the 4 inputs to a single HDMI output.

In particular, the **VS-81H** features:

- A maximum data rate of 6.75Gbps (2.25Gbps per graphic channel)
- HDTV compatibility (suitable for resolutions up to UXGA at 60Hz, and for all HD resolutions)
- HDMI support with Deep Color, x.v.Color™, up to 7.1 Uncompressed Audio Channels
- HDCP support (High Definition Digital Content Protection)
- EDID pass-through that passes EDID/HDCP signals from source to display
- 3D pass-through
- Kramer Equalization & re-Klocking™ Technology that rebuilds the digital signal to travel longer distances.
- Eight input selector buttons
- A OFF button to disconnect the output and a PANEL LOCK button to prevent unwanted tampering with the buttons on the front panel
- A world-wide power supply 100–240V AC
- Installation in one vertical space of a standard 19" professional rack enclosure

Control the **VS-81H** using the front panel buttons, or remotely via:

- RS-232 serial commands transmitted by a touch screen system, PC, or other serial controller
- The Kramer **RC-IR3** infrared remote control transmitter
- The Ethernet

3.1 Defining EDID

The Extended Display Identification Data (EDID) is a data-structure provided by a display, to describe its capabilities to a graphics card (that is connected to the display's source). The EDID enables the **VS-81H** to "know" what kind of monitor is connected to the output. The EDID includes the manufacturer's name, the product type, the timing data supported by the display, the display size, luminance data and (for digital displays only) the pixel mapping data.

EDID is defined by a standard published by the Video Electronics Standards Association (VESA).

3.2 About HDMI—General Description

High-Definition Multimedia Interface (HDMI) is an uncompressed all-digital audio/video interface, widely supported in the entertainment and home cinema industry. HDMI ensures an all-digital rendering of video without the losses associated with analog interfaces and their unnecessary digital-to-analog conversions. It delivers the maximum high-definition image and sound quality in use today. Note that Kramer Electronics Limited is an HDMI Adopter and an HDCP Licensee.

HDMI, the HDMI logo and High-Definition Multimedia Interface are trademarks or registered trademarks of HDMI licensing LLC.

In particular, HDMI:

- Provides a simple interface between any audio/video source, such as a set-top box, DVD player, or AV receiver and video monitor, such as a digital flat LCD / plasma television (DTV), over a single lengthy cable
SIMPLICITY - With video and multi-channel audio combined into a single cable, the cost, complexity, and confusion of multiple cables currently used in AV systems is reduced
LENGTHY CABLE - HDMI technology has been designed to use standard copper cable construction at up to 15m
- Supports standard, enhanced, high-definition video, and multi-channel digital audio on a single cable
MULTI-CHANNEL DIGITAL AUDIO - HDMI supports multiple audio formats, from standard stereo to multi-channel surround-sound. HDMI has the capacity to support Dolby 5.1 audio and high-resolution audio formats
- Transmits all ATSC HDTV standards and supports 8-channel digital audio, with bandwidth to spare to accommodate future enhancements and requirements

- Benefits consumers by providing superior, uncompressed digital video quality via a single cable, and user-friendly connector
HDMI provides the quality and functionality of a digital interface while also supporting uncompressed video formats in a simple, cost-effective manner
- Is backward-compatible with DVI (Digital Visual Interface)
- Supports two-way communication between the video source (such as a DVD player) and the digital television, enabling new functionality such as automatic configuration and one-button play
- Has the capacity to support existing high-definition video formats (720p, 1080i and 1080p), standard definition formats such as NTSC or PAL, as well as 480p and 576p

3.3 About HDCP—General Description

The High-Bandwidth Digital Content Protection (HDCP) standard developed by Intel, protects digital video and audio signals transmitted over DVI or HDMI connections between two HDCP-enabled devices to eliminate the reproduction of copyrighted material. To protect copyright holders (such as movie studios) from having their programs copied and shared, the HDCP standard provides for the secure and encrypted transmission of digital signals.

3.4 Defining the VS-81H 8x1 HDMI Switcher

This section defines the **VS-81H**.

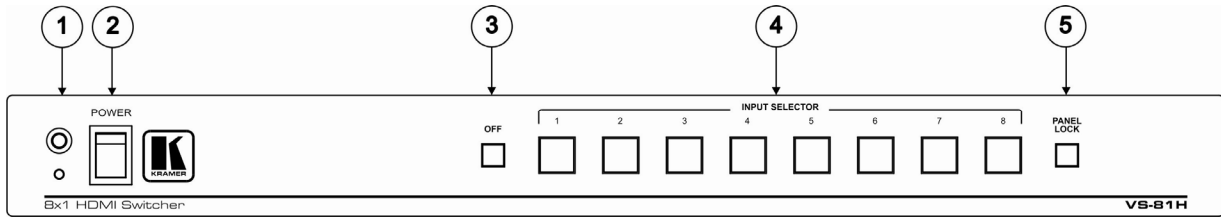


Figure 1: VS-81H 8x1 HDMI Switcher Front Panel

| # | Feature | Function |
|---|------------------------|---|
| 1 | IR Receiver | LED illuminates when receiving signals from the infrared remote control transmitter |
| 2 | POWER Switch | Illuminated switch for turning the unit ON or OFF |
| 3 | OFF Button | Press to toggle disconnecting the output Flashes when the EDID of the connected monitor is different from the last EDID that was saved |
| 4 | INPUT SELECTOR Buttons | Press to select an input (from 1 to 8) |
| 5 | PANEL LOCK Button | Press to toggle disengaging the front panel buttons and to set to the PC/DVD mode |

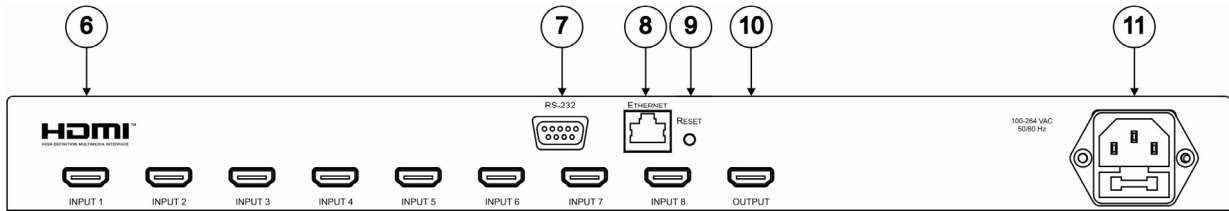


Figure 2: VS-81H 8x1 HDMI Switcher Rear Panel

| # | Feature | Function |
|----|-------------------------------------|---|
| 6 | <i>INPUT</i> HDMI Connectors | Connect to the HDMI sources (from 1 to 8) |
| 7 | <i>RS-232</i> 9-pin D-sub Connector | Connects to a PC or an RS-232 remote controller |
| 8 | <i>ETHERNET</i> Connector | Connects to a PC, Ethernet controller or network |
| 9 | <i>RESET</i> Button | Press to reset to the factory default definitions: First disconnect the power cord and then connect it again while pressing the RESET button. The unit powers up and loads the factory default definitions into its memory. IP number – 192.168.1.39 Mask – 255.255.255.0 Gateway – 192.168.1.1 |
| 10 | <i>OUTPUT</i> HDMI Connector | Connects to the HDMI acceptor |
| 11 | Power Connector with Fuse | AC connector enabling power supply to the unit |

4 Installing in a Rack

This section provides instructions for rack mounting the unit.

Before installing in a rack, be sure that the environment is within the recommended range:

| | |
|------------------------|--------------------------------|
| OPERATING TEMPERATURE: | 0° to +55°C (32° to 131°F) |
| STORAGE TEMPERATURE: | -45° to +72°C (-49° to 162°F) |
| HUMIDITY: | 10% to 90%, RHL non-condensing |



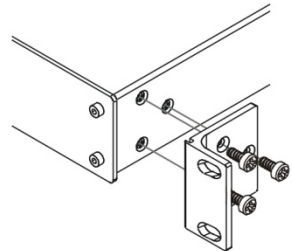
CAUTION!

When installing on a 19" rack, avoid hazards by taking care that:

1. It is located within the recommended environmental conditions, as the operating ambient temperature of a closed or multi unit rack assembly may exceed the room ambient temperature.
2. Once rack mounted, enough air will still flow around the machine.
3. The machine is placed straight in the correct horizontal position.
4. You do not overload the circuit(s). When connecting the machine to the supply circuit, overloading the circuits might have a detrimental effect on overcurrent protection and supply wiring. Refer to the appropriate nameplate ratings for information. For example, for fuse replacement, see the value printed on the product label.
5. The machine is earthed (grounded) in a reliable way and is connected only to an electricity socket with grounding. Pay particular attention to situations where electricity is supplied indirectly (when the power cord is not plugged directly into the socket in the wall), for example, when using an extension cable or a power strip, and that you use only the power cord that is supplied with the machine.

To rack-mount a machine:

1. Attach both ear brackets to the machine. To do so, remove the screws from each side of the machine (3 on each side), and replace those screws through the ear brackets.



2. Place the ears of the machine against the rack rails, and insert the proper screws (not provided) through each of the four holes in the rack ears.

Note:

- In some models, the front panel may feature built-in rack ears
- Detachable rack ears can be removed for desktop use
- Always mount the machine in the rack before you attach any cables or connect the machine to the power
- If you are using a Kramer rack adapter kit (for a machine that is not 19"), see the Rack Adapters user manual for installation instructions available from our Web site

5 Connecting the VS-81H



Always switch off the power to each device before connecting it to your **VS-81H**. After connecting your **VS-81H**, connect its power and then switch on the power to each device.

To connect the **VS-81H 8x1 HDMI Switcher** (as illustrated in [Figure 3](#)), do the following:

1. If required:
 - Set the appropriate INPUTS to the DVD mode (see [Section 6.1](#))
 - Acquire the EDID (see [Section 6.2](#))
2. Connect the HDMI sources as follows:

You do not have to connect all the HDMI sources.
Alternatively, you can connect a PC to any of the inputs and set those inputs to the PC mode (see [Section 6.1](#))

 - A multimedia player to INPUT 1
 - A set top box to INPUT 2
 - A DVD player to INPUT 6
 - A DVD player to INPUT 8
3. Connect the OUTPUT HDMI connector to an HDMI acceptor (for example, a plasma display).
4. If required, connect a PC and/or controller to the RS-232 port (see [Section 6.3](#)) and/or the ETHERNET port (see [Section 6.4](#)).
5. Connect the power connector to the mains electricity (not shown in [Figure 3](#)).

Press an INPUT SELECTOR button (from 1 to 8) to choose the HDMI input to route to the output.

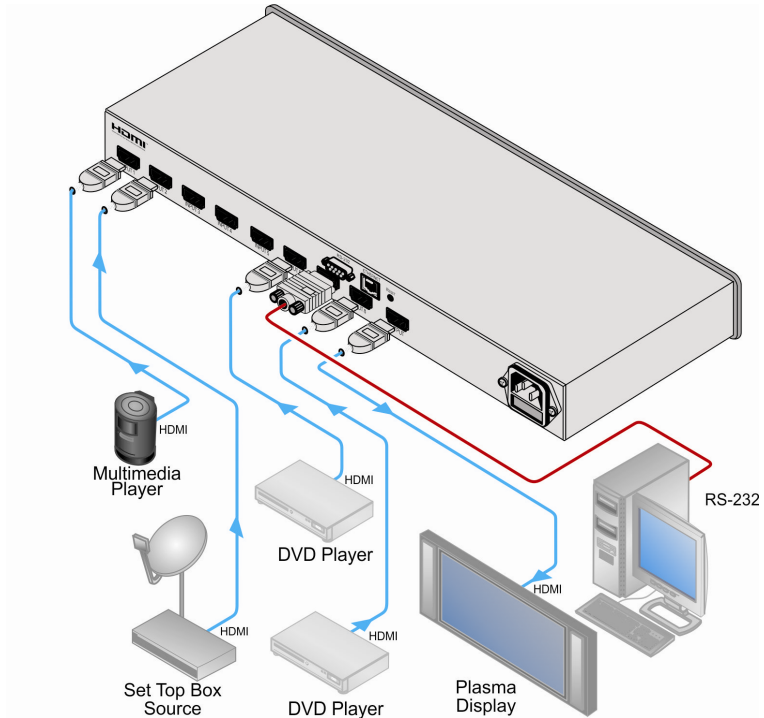


Figure 3: Connecting the VS-81H 8x1 HDMI Switcher

6 Operating the VS-81H

This section describes:

- The PC mode and the DVD mode (see [Section 6.1](#))
- How to acquire the EDID (see [Section 6.2](#))
- How to control the machine via RS-232 (see [Section 6.3](#))
- How to control the machine via the ETHERNET port (see [Section 6.4](#))

6.1 The PC and DVD Modes

The **VS-81H** has two operation modes that can be set individually for each input: the PC mode (default) and the DVD mode:

- Use the PC mode when connecting one or more computers to the inputs using a DVI-to-HDMI converter cable
For example, the Kramer HDMI-DVI gold-plated cable in various lengths (3", 6", 10" and 15").
- Use the DVD mode when connecting one or more DVDs to the inputs

In the PC mode, an input always has access to the EDID (default or acquired) to prevent the computer from resetting if the output is not connected.

In the DVD mode, an input only has access to the EDID when it is switched to the connected output.

The PC mode and the DVD mode can be applied to a single unit or to several inputs. For example, if you want to connect computers to INPUTS 1 and 2, and DVD machines to INPUTS 6 and 8, set INPUTS 1 and 2 to the PC mode and INPUTS 6 and 8 to the DVD mode.

To set the inputs to either the PC or DVD mode, do the following:

1. Turn off the **VS-81H** POWER.
2. Press the PANEL LOCK button while turning the POWER on again.

3. Keep pressing and holding the PANEL LOCK button for a few seconds and then release it.

The LOCK button flashes.

If an input button illuminates, this indicates that that input is set to the DVD mode.

If an input button is not illuminated, this indicates that that input is set to the PC mode.

4. Press an input to toggle between the PC mode (input button not illuminated) and the DVD mode (input button illuminated).
5. To exit this mode, press the PANEL LOCK button.
6. Connect a computer to the input that is set to the PC mode and a DVD to the input that is set to the DVD mode.

The following table summarizes the differences between the PC mode and the DVD mode:

| PC Mode | DVD Mode |
|--|--|
| The input is connected to a computer | The input is connected to a multimedia application, such as a DVD, a set top box and so on |
| The EDID is available at all times (to prevent computer reset) | The EDID is available only when the input and an output are connected |
| The input EDID source is the default EDID or an acquired EDID (see Section 6.2) | The input EDID source is acquired directly from the connected output |

6.2 Acquiring the EDID

The acquired EDID is used when an input is set to the PC mode.

To acquire the EDID, do the following:

1. Turn the POWER off.
2. Press the PANEL LOCK button and the INPUT 8 button while turning the POWER on again.

The INPUT buttons flash in sequence until the unit has completed to read the EDID.

3. Release the PANEL LOCK and INPUT 8 buttons.

If an output was connected, the output EDID is read to all the inputs. If an output was not connected to the machine, the default EDID is read to the inputs.

6.3 Connecting via the RS-232 Port

You can connect to the **VS-81H** to a PC or RS-232 controller using the RS-232 connection.

Note that a null-modem adapter/connection is not required.

To connect to the **VS-81H** via RS-232:

- Connect the RS-232 9-pin D-sub rear panel port on the **VS-81H** unit via a 9-wire straight cable (only pin 2 to pin 2, pin 3 to pin 3, and pin 5 to pin 5 need to be connected) to the RS-232 9-pin D-sub port on your PC

6.4 Connecting via the ETHERNET Port

You can connect the **VS-81H** via the Ethernet, using a crossover cable (see [Section 6.4.1](#)) for direct connection to the PC or a straight through cable (see [Section 6.4.2](#)) for connection via a network hub or network router.

After connecting the Ethernet port, install and configure your Ethernet Port. For detailed instructions, see the "Ethernet Configuration (FC-11) guide.pdf" file in the technical support section on our Web site: <http://www.kramerelectronics.com>.

6.4.1 Connecting the ETHERNET Port directly to a PC (Crossover Cable)

You can connect the Ethernet port of the **VS-81H** to the Ethernet port on your PC, via a crossover cable with RJ-45 connectors.

This type of connection is recommended for identification of the factory default IP Address of the **VS-81H** during the initial configuration.

After connecting the Ethernet port, configure your PC as follows:

1. Right-click the My Network Places icon on your desktop.
2. Select **Properties**.

3. Right-click Local Area Connection Properties.
4. Select **Properties**.
The Local Area Connection Properties window appears.
5. Select the Internet Protocol (TCP/IP) and click the **Properties** Button (see [Figure 4](#)).

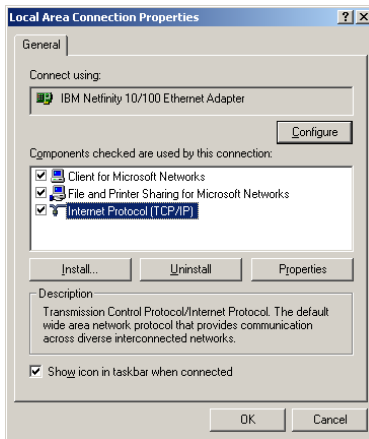


Figure 4: Local Area Connection Properties Window

6. Select Use the following IP Address, and fill in the details as shown in [Figure 5](#).
7. Click **OK**.

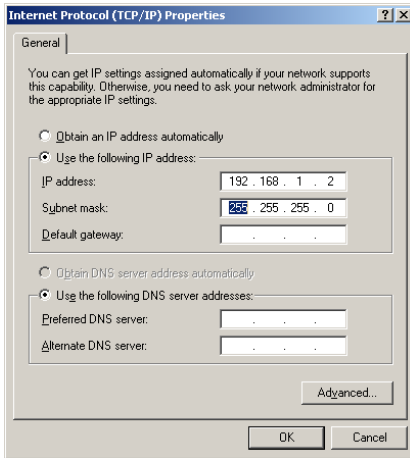


Figure 5: Internet Protocol (TCP/IP) Properties Window

6.4.2 Connecting the ETHERNET Port via a Network Hub (Straight-Through Cable)

You can connect the Ethernet port of the **VS-81H** to the Ethernet port on a network hub or network router, via a straight through cable with RJ-45 connectors.

6.4.3 Configuring Several Units via the Ethernet Port

To control several units via the Ethernet, connect each unit via the Ethernet port to the LAN port of your PC. Use your PC to initially configure the settings of each unit (see [Section 6.46.4.1](#)).

7 Technical Specifications

| | |
|--|--|
| INPUTS: | 8 HDMI connectors |
| OUTPUT: | 1 HDMI connector |
| MAX. DATA RATE: | Up to 6.75Gbps (2.25Gbps per graphic channel) |
| COMPLIANCE WITH HDMI STANDARD: | Supports HDMI and HDCP |
| RESOLUTION: | Up to UXGA; 1080p, deep color |
| POWER SOURCE: | 100–240V AC; 50/60Hz, 12VA |
| CONTROLS: | Front panel buttons, infrared remote control transmitter, RS-232, Ethernet |
| OPERATING TEMPERATURE: | 0° to +55°C (32° to 131°F) |
| STORAGE TEMPERATURE: | -45° to +72°C (-49° to 162°F) |
| HUMIDITY: | 10% to 90%, RHL non-condensing |
| DIMENSIONS: | 19" x 7" x 1U (W, D, H) |
| WEIGHT: | 2.5kg (5.5lbs) approx. |
| ACCESSORIES: | Power cord, rack "ears" and IR remote control |
| Specifications are subject to change without notice at http://www.kramerelectronics.com | |

8 Default Communication Parameters

| RS-232 | |
|--------------------------------|------------------------|
| Protocol 2000 | |
| Baud Rate: | 9600 |
| Data Bits: | 8 |
| Stop Bits: | 1 |
| Parity: | None |
| Command Format: | HEX |
| Example (Output 1 to Input 1): | 0x01, 0x81, 0x81, 0x81 |
| Ethernet | |
| IP Address: | 192.168.1.39 |
| TCP Port Number: | 5000 |
| Network Mask: | 255.255.255.0 |
| Default Gateway: | 192.168.1.1 |

9 Protocol 2000

Kramer Protocol 2000 for RS-232/RS-485 communication uses four bytes of information as defined below.

| MSB | | | | | | | | LSB |
|-----|---|-------------|-------------|----|----|----|----|-----|
| | | DESTINATION | INSTRUCTION | | | | | |
| 0 | D | N5 | N4 | N3 | N2 | N1 | N0 | |
| 7 | 6 | 5 | 4 | 3 | 2 | 1 | 0 | |

1st byte

| | | INPUT | | | | | |
|---|----|-------|----|----|----|----|----|
| 1 | I6 | I5 | I4 | I3 | I2 | I1 | I0 |
| 7 | 6 | 5 | 4 | 3 | 2 | 1 | 0 |

2nd byte

| | | OUTPUT | | | | | |
|---|----|--------|----|----|----|----|----|
| 1 | O6 | O5 | O4 | O3 | O2 | O1 | O0 |
| 7 | 6 | 5 | 4 | 3 | 2 | 1 | 0 |

3rd byte

| | | MACHINE NUMBER | | | | | |
|---|-----|----------------|----|----|----|----|----|
| 1 | OVR | X | M4 | M3 | M2 | M1 | M0 |
| 7 | 6 | 5 | 4 | 3 | 2 | 1 | 0 |

4th byte

1st BYTE: Bit 7 – Defined as 0.

D – “DESTINATION”: 0 - for sending information to the switchers (from the PC);

1 - for sending to the PC (from the switcher).

N5...N0 – “INSTRUCTION”

The function that is to be performed by the switcher(s) is defined by the INSTRUCTION (6 bits). Similarly, if a function is performed via the machine’s keyboard, then these bits are set with the INSTRUCTION NO., which was performed. The instruction codes are defined according to the table below (INSTRUCTION NO. is the value to be set for N5...N0).

2nd BYTE: Bit 7 – Defined as 1.
I6...I0 – “INPUT”.

When switching (ie. instruction codes 1 and 2), the INPUT (7 bits) is set as the input number which is to be switched.

Similarly, if switching is done via the machine’s front-panel, then these bits are set with the INPUT NUMBER which was switched. For other operations, these bits are defined according to the table.

3rd BYTE: Bit 7 – Defined as 1.
O6...O0 – “OUTPUT”.

When switching (ie. instruction codes 1 and 2), the OUTPUT (7 bits) is set as the output number which is to be switched.

Similarly, if switching is done via the machine’s front-panel, then these bits are set with the OUTPUT NUMBER which was switched. For other operations, these bits are defined according to the table.

4th BYTE: Bit 7 – Defined as 1.
Bit 5 – Don’t care.
OVR – Machine number override.
M4...M0 – MACHINE NUMBER.

Used to address machines in a system via their machine numbers. When several machines are controlled from a single serial port, they are usually configured together with each machine having an individual machine number. If the OVR bit is set, then all machine numbers will accept (implement) the command, and the addressed machine will reply. For a single machine controlled via the serial port, always set M4...M0 = 1, and make sure that the machine itself is configured as MACHINE NUMBER = 1.



All the values in the table are decimal, unless otherwise stated

| Instruction Codes for Protocol 2000 | | | | |
|-------------------------------------|---------------------------------|---|---|-------|
| Instruction | | Definition for Specific Instruction | | Notes |
| # | Description | Input | Output | |
| 1 | SWITCH VIDEO | Set equal to video input which is to be switched (0 = disconnect) | Set equal to video output which is to be switched (0 = to all the outputs) | 2, 15 |
| 1 | SWITCH VIDEO | Set equal to video input which is to be switched (0 = disconnect) | Set equal to video output which is to be switched (0 = to all the outputs) | 2, 15 |
| 30 | LOCK FRONT PANEL | 0 - Panel unlocked 1 - Panel locked | 0 | 2 |
| 31 | REQUEST WHETHER PANEL IS LOCKED | 0 | 0 | 16 |
| 61 | IDENTIFY MACHINE | 1 - video machine name 2 - audio machine name 3 - video software version 4 - audio software version 5 - RS-422 controller name 6 - RS-422 controller version 7 - remote control name 8 - remote software version 9 - Protocol 2000 revision | 0 - Request first 4 digits 1 - Request first suffix 2 - Request second suffix 3 - Request third suffix 10 - Request first prefix 11 - Request second prefix 12 - Request third prefix | 13 |

NOTES on the above table:

NOTE 2 – These are bi-directional definitions. That is, if the switcher receives the code, it will perform the instruction; and if the instruction is performed (due to a keystroke operation on the front panel), then these codes are sent. For example, if the HEX code

01 85 88 83

was sent from the PC, then the switcher (machine 3) will switch input 5 to output 8. If the user switched input 1 to output 7 via the front panel keypad, then the switcher will send HEX codes:

41 81 87 83

to the PC.

When the PC sends one of the commands in this group to the switcher, then, if the instruction is valid, the switcher replies by sending to the PC the same four bytes that it was sent (except for the first byte, where the DESTINATION bit is set high).

NOTE 13 – This is a request to identify the switcher/s in the system. If the OUTPUT is set as 0, and the INPUT is set as 1, 2, 5 or 7, the machine will send its name. The reply is the decimal value of the INPUT and OUTPUT. For example, for a 2216, the reply to the request to send the audio machine name would be (HEX codes):

7D 96 90 81 (i.e. 128dec+ 22dec for 2nd byte, and 128dec+ 16dec for 3rd byte).

If the request for identification is sent with the INPUT set as 3 or 4, the appropriate machine will send its software version number. Again, the reply would be the decimal value of the INPUT and OUTPUT - the INPUT representing the number in front of the decimal point, and the OUTPUT representing the number after it. For example, for version 3.5, the reply to the request to send the version number would be (HEX codes):

7D 83 85 81 (i.e. 128dec+ 3dec for 2nd byte, 128dec+ 5dec for 3rd byte).

If the OUTPUT is set as 1, then the ASCII coding of the lettering following the machine's name is sent. For example, for the VS-7588YC, the reply to the request to send the first suffix would be (HEX codes):

7D D9 C3 81 (i.e. 128dec+ ASCII for "Y"; 128dec+ ASCII for "C").

NOTE 15 – When the OVR bit (4th byte) is set, then the "video" commands have universal meaning. For example, instruction 1 (SWITCH VIDEO) will cause all units (including audio, data, etc.) to switch. Similarly, if a machine is in "FOLLOW" mode, it will perform any "video" instruction.

NOTE 16 - The reply to the "REQUEST WHETHER PANEL IS LOCKED" is as in NOTE 4 above, except that here the OUTPUT is assigned with the value 0 if the panel is unlocked, or 1 if it is locked.

LIMITED WARRANTY

The warranty obligations of Kramer Electronics for this product are limited to the terms set forth below:

What is Covered

This limited warranty covers defects in materials and workmanship in this product.

What is Not Covered

This limited warranty does not cover any damage, deterioration or malfunction resulting from any alteration, modification, improper or unreasonable use or maintenance, misuse, abuse, accident, neglect, exposure to excess moisture, fire, improper packing and shipping (such claims must be presented to the carrier), lightning, power surges, or other acts of nature. This limited warranty does not cover any damage, deterioration or malfunction resulting from the installation or removal of this product from any installation, any unauthorized tampering with this product, any repairs attempted by anyone unauthorized by Kramer Electronics to make such repairs, or any other cause which does not relate directly to a defect in materials and/or workmanship of this product. This limited warranty does not cover cartons, equipment enclosures, cables or accessories used in conjunction with this product.

Without limiting any other exclusion herein, Kramer Electronics does not warrant that the product covered hereby, including, without limitation, the technology and/or integrated circuit(s) included in the product, will not become obsolete or that such items are or will remain compatible with any other product or technology with which the product may be used.

How Long Does this Coverage Last

Seven years as of this printing; please check our Web site for the most current and accurate warranty information.

Who is Covered

Only the original purchaser of this product is covered under this limited warranty. This limited warranty is not transferable to subsequent purchasers or owners of this product.

What Kramer Electronics will do

Kramer Electronics will, at its sole option, provide one of the following three remedies to whatever extent it shall deem necessary to satisfy a proper claim under this limited warranty:

1. Elect to repair or facilitate the repair of any defective parts within a reasonable period of time, free of any charge for the necessary parts and labor to complete the repair and restore this product to its proper operating condition. Kramer Electronics will also pay the shipping costs necessary to return this product once the repair is complete.
2. Replace this product with a direct replacement or with a similar product deemed by Kramer Electronics to perform substantially the same function as the original product.
3. Issue a refund of the original purchase price less depreciation to be determined based on the age of the product at the time remedy is sought under this limited warranty.

What Kramer Electronics will not do Under This Limited Warranty

If this product is returned to Kramer Electronics or the authorized dealer from which it was purchased or any other party authorized to repair Kramer Electronics products, this product must be insured during shipment, with the insurance and shipping charges prepaid by you. If this product is returned uninsured, you assume all risks of loss or damage during shipment. Kramer Electronics will not be responsible for any costs related to the removal or re-installation of this product from or into any installation. Kramer Electronics will not be responsible for any costs related to any setting up this product, any adjustment of user controls or any programming required for a specific installation of this product.

How to Obtain a Remedy under this Limited Warranty

To obtain a remedy under this limited warranty, you must contact either the authorized Kramer Electronics reseller from whom you purchased this product or the Kramer Electronics office nearest you. For a list of authorized Kramer Electronics resellers and/or Kramer Electronics authorized service providers, please visit our web site at www.kramerelectronics.com or contact the Kramer Electronics office nearest you.

In order to pursue any remedy under this limited warranty, you must possess an original, dated receipt as proof of purchase from an authorized Kramer Electronics reseller. If this product is returned under this limited warranty, a return authorization number, obtained from Kramer Electronics, will be required. You may also be directed to an authorized reseller or a person authorized by Kramer Electronics to repair the product.

If it is decided that this product should be returned directly to Kramer Electronics, this product should be properly packed, preferably in the original carton, for shipping; Cartons not bearing a return authorization number will be refused.

Limitation on Liability

THE MAXIMUM LIABILITY OF KRAMER ELECTRONICS UNDER THIS LIMITED WARRANTY SHALL NOT EXCEED THE ACTUAL PURCHASE PRICE PAID FOR THE PRODUCT. TO THE MAXIMUM EXTENT PERMITTED BY LAW, KRAMER ELECTRONICS IS NOT RESPONSIBLE FOR DIRECT, SPECIAL, INCIDENTAL OR CONSEQUENTIAL DAMAGES RESULTING FROM ANY BREACH OF WARRANTY OR CONDITION, OR UNDER ANY OTHER LEGAL THEORY. Some countries, districts or states do not allow the exclusion or limitation of relief, special, incidental, consequential or indirect damages, or the limitation of liability to specified amounts, so the above limitations or exclusions may not apply to you.

Exclusive Remedy

TO THE MAXIMUM EXTENT PERMITTED BY LAW, THIS LIMITED WARRANTY AND THE REMEDIES SET FORTH ABOVE ARE EXCLUSIVE AND IN LIEU OF ALL OTHER WARRANTIES, REMEDIES AND CONDITIONS, WHETHER ORAL OR WRITTEN, EXPRESS OR IMPLIED. TO THE MAXIMUM EXTENT PERMITTED BY LAW, KRAMER ELECTRONICS SPECIFICALLY DISCLAIMS ANY AND ALL IMPLIED WARRANTIES, INCLUDING, WITHOUT LIMITATION, WARRANTIES OF MERCHANTABILITY AND FITNESS FOR A PARTICULAR PURPOSE. IF KRAMER ELECTRONICS CANNOT LAWFULLY DISCLAIM OR EXCLUDE IMPLIED WARRANTIES UNDER APPLICABLE LAW, THEN ALL IMPLIED WARRANTIES COVERING THIS PRODUCT, INCLUDING WARRANTIES OF MERCHANTABILITY AND FITNESS FOR A PARTICULAR PURPOSE, SHALL APPLY TO THIS PRODUCT AS PROVIDED UNDER APPLICABLE LAW.

IF ANY PRODUCT TO WHICH THIS LIMITED WARRANTY APPLIES IS A "CONSUMER PRODUCT" UNDER THE MAGNUSON-MOSS WARRANTY ACT (15 U.S.C.A. §2301, ET SEQ.) OR OTHER APPLICABLE LAW, THE FOREGOING DISCLAIMER OF IMPLIED WARRANTIES SHALL NOT APPLY TO YOU, AND ALL IMPLIED WARRANTIES ON THIS PRODUCT, INCLUDING WARRANTIES OF MERCHANTABILITY AND FITNESS FOR THE PARTICULAR PURPOSE, SHALL APPLY AS PROVIDED UNDER APPLICABLE LAW.

Other Conditions

This limited warranty gives you specific legal rights, and you may have other rights which vary from country to country or state to state.

This limited warranty is void if (i) the label bearing the serial number of this product has been removed or defaced, (ii) the product is not distributed by Kramer Electronics or (iii) this product is not purchased from an authorized Kramer Electronics reseller. If you are unsure whether a reseller is an authorized Kramer Electronics reseller, please visit our Web site at www.kramerelectronics.com or contact a Kramer Electronics office from the list at the end of this document.

Your rights under this limited warranty are not diminished if you do not complete and return the product registration form or complete and submit the online product registration form. Kramer Electronics thanks you for purchasing a Kramer Electronics product. We hope it will give you years of satisfaction.



For the latest information on our products and a list of Kramer distributors, visit our Web site where updates to this user manual may be found.

We welcome your questions, comments, and feedback.

Web site: www.kramerelectronics.com

E-mail: info@kramerel.com

CE



SAFETY WARNING

Disconnect the unit from the power supply before opening and servicing



PN: 2900-000670



Rev: 3

Free Manuals Download Website

<http://myh66.com>

<http://usermanuals.us>

<http://www.somanuals.com>

<http://www.4manuals.cc>

<http://www.manual-lib.com>

<http://www.404manual.com>

<http://www.luxmanual.com>

<http://aubethermostatmanual.com>

Golf course search by state

<http://golfingnear.com>

Email search by domain

<http://emailbydomain.com>

Auto manuals search

<http://auto.somanuals.com>

TV manuals search

<http://tv.somanuals.com>