

Kramer Electronics, Ltd.



USER MANUAL

Model:

FC-50

RS-232 Range Extender

Contents

1	Introduction	1
2	Getting Started	1
2.1	Quick Start	2
3	Overview	3
3.1	About the Power Connect Feature	3
3.2	Shielded Twisted Pair (STP) / Unshielded Twisted Pair (UTP)	3
3.3	Recommendations for Achieving the Best Performance	4
4	Your FC-50 RS-232 Range Extender	4
5	Connecting the FC-50 RS-232 Range Extender	6
5.1	Wiring the CAT 5 LINE IN / LINE OUT RJ-45 Connectors	7
6	Technical Specifications	8

Figures

Figure 1:	FC-50 RS-232 Range Extender	4
Figure 2:	FC-50 RS-232 Range Extender Underside	5
Figure 3:	Connecting the FC-50 RS-232 Range Extender	6
Figure 4:	CAT 5 PINOUT	7

Tables

Table 1:	FC-50 RS-232 Range Extender Features	5
Table 2:	FC-50 RS-232 Range Extender Underside Features	5
Table 3:	CAT 5 PINOUT	7
Table 4:	Technical Specifications of the FC-50	8

1 Introduction

Welcome to Kramer Electronics! Since 1981, Kramer Electronics has been providing a world of unique, creative, and affordable solutions to the vast range of problems that confront video, audio, presentation, and broadcasting professionals on a daily basis. In recent years, we have redesigned and upgraded most of our line, making the best even better!

Our 1,000-plus different models now appear in 11 groups¹ that are clearly defined by function.

Thank you for purchasing the **FC-50 RS-232 Range Extender**, which is ideal for controlling a single matrix switcher or other controllable device from long distance.

The package includes the following items:

- One **FC-50 RS-232 Range Extender** unit
- Power supply (12V DC)
- This user manual²

2 Getting Started

We recommend that you:

- Unpack the equipment carefully and save the original box and packaging materials for possible future shipment
- Review the contents of this user manual
- Use Kramer high-performance high-resolution cables³

1 GROUP 1: Distribution Amplifiers; GROUP 2: Switchers and Routers; GROUP 3: Control Systems; GROUP 4: Format/Standards Converters; GROUP 5: Range Extenders and Repeaters; GROUP 6: Specialty AV Products; GROUP 7: Scan Converters and Scalers; GROUP 8: Cables and Connectors; GROUP 9: Room Connectivity; GROUP 10: Accessories and Rack Adapters and GROUP 11: Sierra Video Products

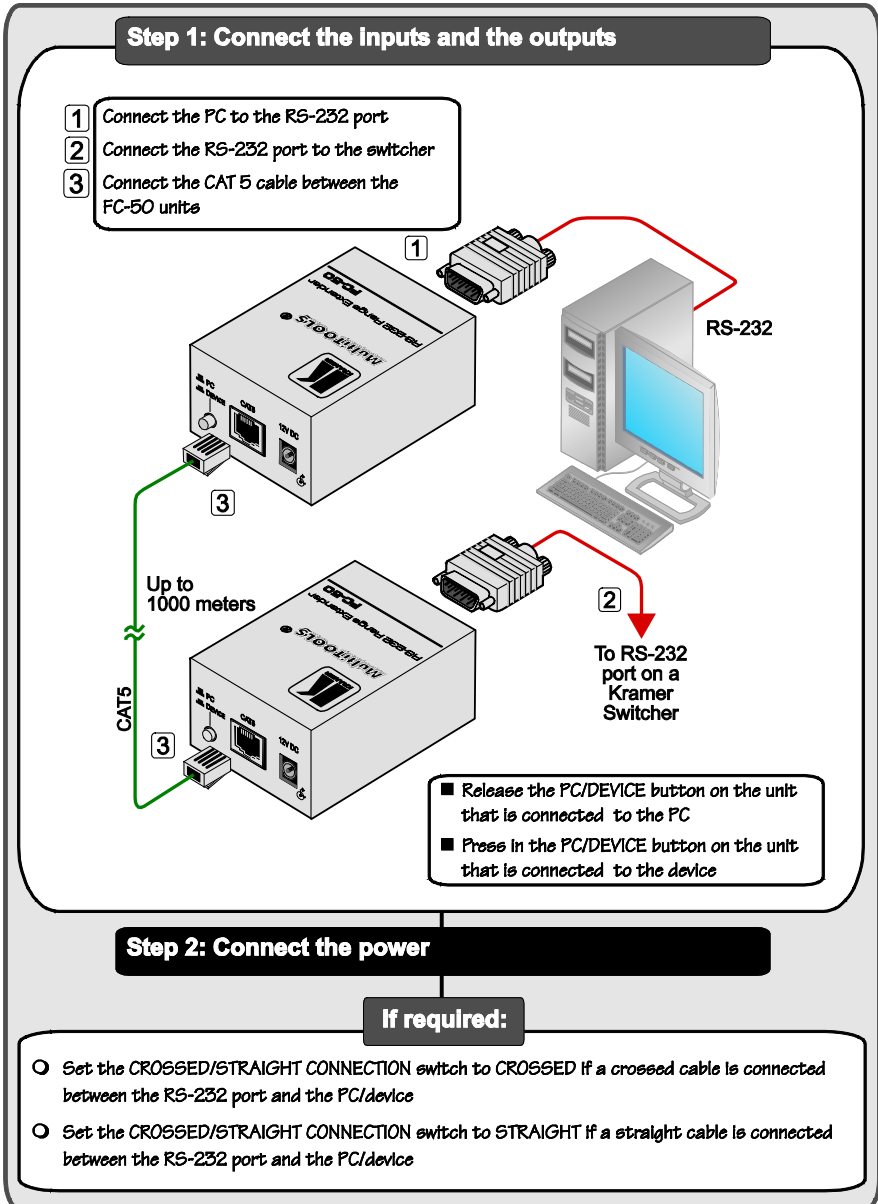
2 Download up-to-date Kramer user manuals from our Web site at <http://www.kramerelectronics.com>

3 The complete list of Kramer cables is on our Web site at <http://www.kramerelectronics.com>



2.1 Quick Start

This quick start chart summarizes the basic setup and operation steps.



3 Overview

The high-quality Kramer MultiTOOLS **FC-50 RS-232 Range Extender** can connect either to a PC or to a device (for example, a switcher). By connecting two units (purchased separately) via a CAT 5 cable, the PC can control the switcher over a range of up to 1000 meters (3300 feet).

In particular, the **FC-50** features:

- Bidirectional RS-232 operation
- The Power Connect feature
- A CONNECTION switch to select between a crossed and a straight connection
- A PC/DEVICE pushbutton that is pressed or released if a device or a PC, respectively, are connected to the RS-232 port
- 12V DC power

3.1 About the Power Connect Feature

The Power Connect feature applies as long as the cable can carry power. This feature is available when using STP cable and the distance does not exceed 50m (164ft) on standard CAT 5 cable. For longer distances, heavier gauge cable should be used (TP cable is still suitable for the video/audio transmission, but not for feeding the power at these distances). For units which are connected via RJ-45 connectors, make sure that the shield of the STP cable is connected to the metal casing of the connectors on both ends of the cable. For units which are connected via terminal block connectors, the shield of the STP cable must be connected to a ground terminal on the units at both ends (use the ground terminal of the power supply connection if necessary).

For a TP cable exceeding a distance of 50m, separate power supplies should be connected to the transmitter and to the receiver simultaneously.

3.2 Shielded Twisted Pair (STP) / Unshielded Twisted Pair (UTP)

We recommend that you use Shielded Twisted Pair (STP) cable, and stress that the compliance to electromagnetic interference was tested using STP cable. There are different levels of STP cable available, and we advise you to use the best quality STP cable that you can afford. Our non-skew-free cable, Kramer **BC-STP** is intended for analog signals where skewing is not an issue.

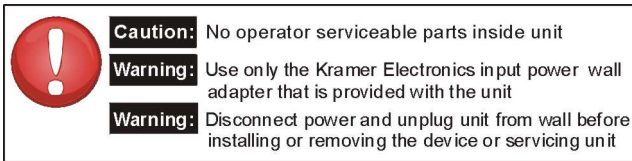
In cases where there is skewing, our Unshielded Twisted Pair (UTP) skew-free cable, Kramer **BC-XTP**, may be advantageous, and UTP cable might

also be preferable for long range applications. In any event when using UTP cable, it is advisable to ensure that the cable is installed far away from electric cables, motors and so on, which are prone to create electrical interference.

3.3 Recommendations for Achieving the Best Performance

To achieve the best performance:

- Use only good quality connection cables¹ to avoid interference, deterioration in signal quality due to poor matching, and elevated noise levels (often associated with low quality cables).
- Do not secure the cables in tight bundles or roll the slack into tight coils
- Avoid interference from neighboring electrical appliances that may adversely influence signal quality and position your Kramer **FC-50** away from moisture, excessive sunlight and dust



4 Your FC-50 RS-232 Range Extender

[Figure 1](#) and [Table 1](#) define the **FC-50 RS-232 Range Extender**:

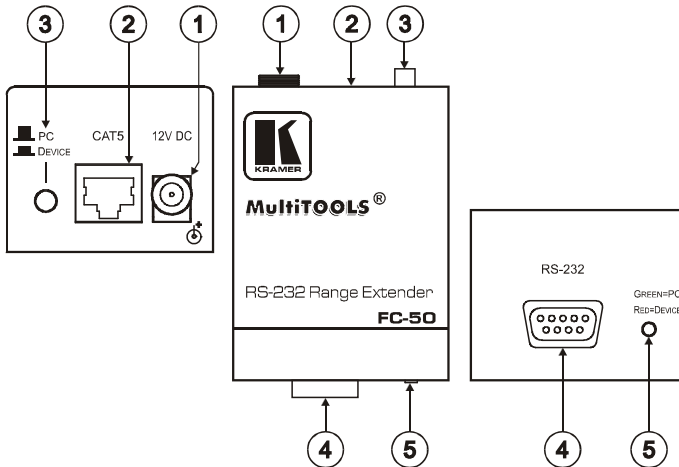


Figure 1: FC-50 RS-232 Range Extender

¹ Available from Kramer Electronics on our Web site at <http://www.kramerelectronics.com>

Your FC-50 RS-232 Range Extender

Table 1: FC-50 RS-232 Range Extender Features

#	Feature	Function
1	12V DC	+12V DC connector for powering the unit
2	CAT 5 RJ-45 Connector	Connect to ¹ the CAT 5 RJ-45 connector on the other FC-50 unit
3	PC / DEVICE Button	Press when a device is connected to the RS-232 port Release when a PC is connected to the RS-232 port
4	RS-232 9-pin D-sub Connector	Connects to either a PC or a device PINS 2, 3 and 5 are passed through the device
5	GREEN=PC RED=DEVICE	LED
		Lights in green when the PC/DEVICE button is released and in red when the PC/DEVICE button is pressed

[Figure 2](#) and [Table 2](#) define the **FC-50** underside:

Table 2: FC-50 RS-232 Range Extender Underside Features

Feature	Function
CROSSED / STRAIGHT CONNECTION Switch	Set to CROSSED for a crossed wire connection ² between the RS-232 port and the PC/device Set to STRAGHT for a straight wire connection between the RS-232 port and the PC/device

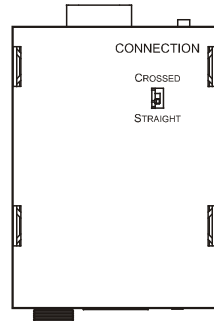


Figure 2: FC-50 RS-232 Range Extender Underside

¹ Using a UTP CAT 5 cable with RJ-45 connectors at both ends (the PINOUT is defined in [Table 3](#) and [Figure 4](#))

² PINS 2 and 3 (Rx and Tx) are crossed in the wiring between the 9-pin D-sub connectors

5 Connecting the FC-50 RS-232 Range Extender

To connect two **FC-50** units, as illustrated in the example in [Figure 3](#), do the following:

1. Connect a PC to the RS-232 port of the first **FC-50** unit and release the PC/DEVICE button.
2. Connect the RS-232 port of the second **FC-50** unit to a device (for example, a switcher) and push in the PC/DEVICE button.
3. Connect the CAT 5 RJ-45 connector of the first unit to the CAT 5 RJ-45 connector of the second **FC-50** unit via UTP cabling.
4. Set the CONNECTION switch independently on both units as follows:
 - STRAIGHT for a straight wire connection¹ between the RS-232 port and the PC/device
 - CROSSED for a crossed wire connection² between the RS-232 port and the PC/device
5. Connect the 12V DC power adapter to the power socket on the **FC-50** and connect the adapter to the mains electricity (not illustrated in [Figure 3](#)).

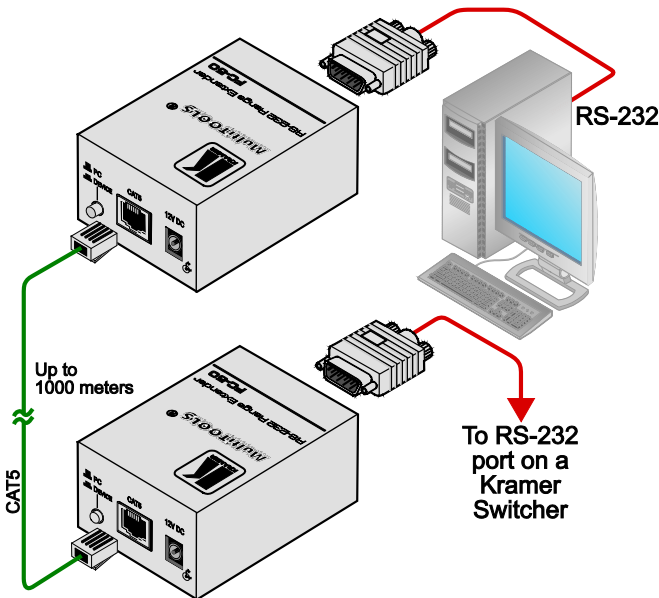


Figure 3: Connecting the FC-50 RS-232 Range Extender

¹ For example, flat cable

² Null modem

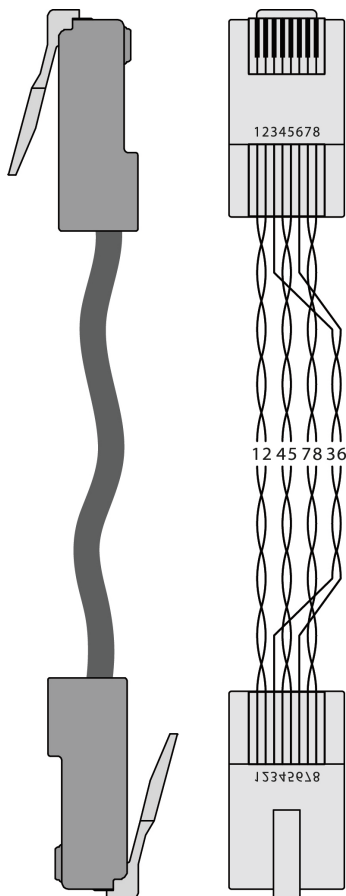
5.1 Wiring the CAT 5 LINE IN / LINE OUT RJ-45 Connectors

[Table 3](#) and [Figure 4](#) define the UTP CAT 5 PINOUT, using a straight pin to pin cable with RJ-45 connectors:

Table 3: CAT 5 PINOUT

EIA /TIA 568B	
PIN	Wire Color
1	Orange / White
2	Orange
3	Green / White
4	Blue
5	Blue / White
6	Green
7	Brown / White
8	Brown

Figure 4: CAT 5 PINOUT



6 Technical Specifications

The **FC-50** technical specifications are shown in [Table 4](#):

Table 4: Technical Specifications¹ of the FC-50

PORTS:	RS-232 on a 9-pin D-sub connector ² , 1 CAT 5 RJ-45 connector
BAUD RATES:	Up to 115.2kbaud
DISPLAY:	GREEN=PC/RED=DEVICE LED
OPERATING TEMPERATURE:	0° to +55°C (32° to 131°F)
STORAGE TEMPERATURE:	-45° to +72°C (-49° to 162°F)
HUMIDITY:	10% to 90%, RHL non-condensing
DIMENSIONS:	5.32cm x 7.25cm x 4.2cm (2.09" x 2.85" x 1.65"), W, D, H
POWER SOURCE:	12V DC, 42mA
WEIGHT:	0.3kg (0.67lbs) approx.

¹ Specifications are subject to change without notice

² Only PINS 2, 3, 5 on the RS-232 cable are valid

LIMITED WARRANTY

The warranty obligations of Kramer Electronics for this product are limited to the terms set forth below:

What is Covered

This limited warranty covers defects in materials and workmanship in this product.

What is Not Covered

This limited warranty does not cover any damage, deterioration or malfunction resulting from any alteration, modification, improper or unreasonable use or maintenance, misuse, abuse, accident, neglect, exposure to excess moisture, fire, improper packing and shipping (such claims must be presented to the carrier), lightning, power surges, or other acts of nature. This limited warranty does not cover any damage, deterioration or malfunction resulting from the installation or removal of this product from any installation, any unauthorized tampering with this product, any repairs attempted by anyone unauthorized by Kramer Electronics to make such repairs, or any other cause which does not relate directly to a defect in materials and/or workmanship of this product. This limited warranty does not cover cartons, equipment enclosures, cables or accessories used in conjunction with this product.

Without limiting any other exclusion herein, Kramer Electronics does not warrant that the product covered hereby, including, without limitation, the technology and/or integrated circuit(s) included in the product, will not become obsolete or that such items are or will remain compatible with any other product or technology with which the product may be used.

How Long Does this Coverage Last

Seven years as of this printing; please check our Web site for the most current and accurate warranty information.

Who is Covered

Only the original purchaser of this product is covered under this limited warranty. This limited warranty is not transferable to subsequent purchasers or owners of this product.

What Kramer Electronics will do

Kramer Electronics will, at its sole option, provide one of the following three remedies to whatever extent it shall deem necessary to satisfy a proper claim under this limited warranty:

1. Elect to repair or facilitate the repair of any defective parts within a reasonable period of time, free of any charge for the necessary parts and labor to complete the repair and restore this product to its proper operating condition. Kramer Electronics will also pay the shipping costs necessary to return this product once the repair is complete.
2. Replace this product with a direct replacement or with a similar product deemed by Kramer Electronics to perform substantially the same function as the original product.
3. Issue a refund of the original purchase price less depreciation to be determined based on the age of the product at the time remedy is sought under this limited warranty.

What Kramer Electronics will not do Under This Limited Warranty

If this product is returned to Kramer Electronics or the authorized dealer from which it was purchased or any other party authorized to repair Kramer Electronics products, this product must be insured during shipment, with the insurance and shipping charges prepaid by you. If this product is returned uninsured, you assume all risks of loss or damage during shipment. Kramer Electronics will not be responsible for any costs related to the removal or re-installation of this product from or into any installation. Kramer Electronics will not be responsible for any costs related to any setting up this product, any adjustment of user controls or any programming required for a specific installation of this product.

How to Obtain a Remedy under this Limited Warranty

To obtain a remedy under this limited warranty, you must contact either the authorized Kramer Electronics reseller from whom you purchased this product or the Kramer Electronics office nearest you. For a list of authorized Kramer Electronics resellers and/or Kramer Electronics authorized service providers, please visit our web site at www.kramerelectronics.com or contact the Kramer Electronics office nearest you.

In order to pursue any remedy under this limited warranty, you must possess an original, dated receipt as proof of purchase from an authorized Kramer Electronics reseller. If this product is returned under this limited warranty, a return authorization number, obtained from Kramer Electronics, will be required. You may also be directed to an authorized reseller or a person authorized by Kramer Electronics to repair the product.

If it is decided that this product should be returned directly to Kramer Electronics, this product should be properly packed, preferably in the original carton, for shipping. Cartons not bearing a return authorization number will be refused.

Limitation on Liability

THE MAXIMUM LIABILITY OF KRAMER ELECTRONICS UNDER THIS LIMITED WARRANTY SHALL NOT EXCEED THE ACTUAL PURCHASE PRICE PAID FOR THE PRODUCT. TO THE MAXIMUM EXTENT PERMITTED BY LAW, KRAMER ELECTRONICS IS NOT RESPONSIBLE FOR DIRECT, SPECIAL, INCIDENTAL OR CONSEQUENTIAL DAMAGES RESULTING FROM ANY BREACH OF WARRANTY OR CONDITION, OR UNDER ANY OTHER LEGAL THEORY. Some countries, districts or states do not allow the exclusion or limitation of relief, special, incidental, consequential or indirect damages, or the limitation of liability to specified amounts, so the above limitations or exclusions may not apply to you.

Exclusive Remedy

TO THE MAXIMUM EXTENT PERMITTED BY LAW, THIS LIMITED WARRANTY AND THE REMEDIES SET FORTH ABOVE ARE EXCLUSIVE AND IN LIEU OF ALL OTHER WARRANTIES, REMEDIES AND CONDITIONS, WHETHER ORAL OR WRITTEN, EXPRESS OR IMPLIED. TO THE MAXIMUM EXTENT PERMITTED BY LAW, KRAMER ELECTRONICS SPECIFICALLY DISCLAIMS ANY AND ALL IMPLIED WARRANTIES, INCLUDING, WITHOUT LIMITATION, WARRANTIES OF MERCHANTABILITY AND FITNESS FOR A PARTICULAR PURPOSE. IF KRAMER ELECTRONICS CANNOT LAWFULLY DISCLAIM OR EXCLUDE IMPLIED WARRANTIES UNDER APPLICABLE LAW, THEN ALL IMPLIED WARRANTIES COVERING THIS PRODUCT, INCLUDING WARRANTIES OF MERCHANTABILITY AND FITNESS FOR A PARTICULAR PURPOSE, SHALL APPLY TO THIS PRODUCT AS PROVIDED UNDER APPLICABLE LAW.

IF ANY PRODUCT TO WHICH THIS LIMITED WARRANTY APPLIES IS A "CONSUMER PRODUCT" UNDER THE MAGNUSON-MOSS WARRANTY ACT (15 U.S.C.A. §2301, ET SEQ.) OR OTHER APPLICABLE LAW, THE FOREGOING DISCLAIMER OF IMPLIED WARRANTIES SHALL NOT APPLY TO YOU, AND ALL IMPLIED WARRANTIES ON THIS PRODUCT, INCLUDING WARRANTIES OF MERCHANTABILITY AND FITNESS FOR THE PARTICULAR PURPOSE, SHALL APPLY AS PROVIDED UNDER APPLICABLE LAW.

Other Conditions

This limited warranty gives you specific legal rights, and you may have other rights which vary from country to country or state to state.

This limited warranty is void if (i) the label bearing the serial number of this product has been removed or defaced, (ii) the product is not distributed by Kramer Electronics or (iii) this product is not purchased from an authorized Kramer Electronics reseller. If you are unsure whether a reseller is an authorized Kramer Electronics reseller, please visit our Web site at www.kramerelectronics.com or contact a Kramer Electronics office from the list at the end of this document.

Your rights under this limited warranty are not diminished if you do not complete and return the product registration form or complete and submit the online product registration form. Kramer Electronics thanks you for purchasing a Kramer Electronics product. We hope it will give you years of satisfaction.



For the latest information on our products and a list of Kramer distributors, visit our Web site: www.kramerelectronics.com where updates to this user manual may be found. We welcome your questions, comments and feedback.



Caution

Safety Warning:

Disconnect the unit from the power supply before opening/servicing.



P/N: 2900-000333



Rev: 6



Kramer Electronics, Ltd.

Web site: www.kramerelectronics.com

E-mail: info@kramerel.com

P/N: 2900-000333 REV 6

Free Manuals Download Website

<http://myh66.com>

<http://usermanuals.us>

<http://www.somanuals.com>

<http://www.4manuals.cc>

<http://www.manual-lib.com>

<http://www.404manual.com>

<http://www.luxmanual.com>

<http://aubethermostatmanual.com>

Golf course search by state

<http://golfingnear.com>

Email search by domain

<http://emailbydomain.com>

Auto manuals search

<http://auto.somanuals.com>

TV manuals search

<http://tv.somanuals.com>