

Installation Guide

Solar Power Bluetooth Hands-free Car Kit

Table of Contents

Package Content	4
Requirements	5
Device Overview	6
Charging Your Car Kit	7
Recommended Way of Using Your Car Kit	11
Connect Car Kit to your Bluetooth enabled cellular phone	16
Operating the Car Kit with Two Bluetooth enabled phones	18
Using your Car Kit	22

Download from www.Somanuals.com. All Manuals Search And Download.

LED Indication	26
Restore to Default Settings	28
Federal Communications Commission (FCC) Statement	29
CE Statement	32
Limited Warranty	33
Contact	34

Package Content

- 1 x Solar Power Bluetooth Hands-free Car Kit
- 1 x USB Car Charger
- 1 x USB Charging Cable
- 1 x Windshield Mount
- 4 x Suction Cups
- 1 x Sun-Visor Mount
- 1 x User Manual
- 1 x Warranty / Registration Card

Requirements

Your mobile/cellular phone, PDA, or Smart Phone must be Bluetooth enabled and supports either Headset or Hands-free profile in order to work with the Solar Power Bluetooth Hands-free Car Kit.

IMPORTANT NOTE: Before start using the Windshield Mount on your windshield, check the state and local laws and ordinances where you drive. Some state laws prohibit drivers from using suction mounts on their windshields while operating motor vehicles. Other state laws allow the suction mount to be located only in specific locations on the windshield. Many other states have enacted restrictions against placing objects on the windshield in locations that obstruct the driver's vision. It is the user's responsibility to mount the device in compliance with all applicable laws and ordinances.

Download from Www.Somanuals.com. All Manuals Search And Download.

Device Overview

1. Volume Up
2. Multi-function button (MFB button)
3. Volume Down
4. Solar panel
5. Mute button
6. USB charging port



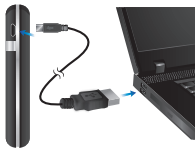
Download from [Www.Somanuals.com](http://www.Somanuals.com). All Manuals Search And Download.

Charging Your Car Kit

Before you begin using your Solar Power Bluetooth Hands-free Car kit, it is recommended to fully charge the device to ensure optimal performance.

Using the USB cable

1. Plug the micro-USB connector end of the USB charging cable to the Solar Power Bluetooth Car Kit, and the other USB Type A connector end to any available USB port on your computer or an AC power adapter with USB port (not included).
2. The LED light on the Car Kit will light up during charging, and it will turn off when charge completes. It will take approximately up to 3 hours to get a full charge thru the USB port of your computer.



Download from [Www.Somanuals.com](http://www.Somanuals.com). All Manuals Search And Download.

Using the car charger

1. Plug the micro-USB connection end of the USB charging cable to the Solar Power Bluetooth Car Kit, and the other USB Type A connector end to the USB Type A female port of the included car charger.
2. Plug the car charger completely into the cigarette lighter in your car and turn on the power of your car. The LED light on the Car Kit will light up during charging, and it will turn off when charge completes. It will take approximately up to 3 hours to get a full charge thru the car charger.



Download from Www.Somanuals.com. All Manuals Search And Download.

Using solar power

1. Place the Solar Power Bluetooth Car Kit under direct sunlight exposure with 45 degree angle, and have the solar panel facing toward sunlight.
2. Leave the Car Kit under sunlight exposure for 18 hours to have the device fully charged. The LED light on the Car Kit will light up during charging, and it will turn off when charge completes.



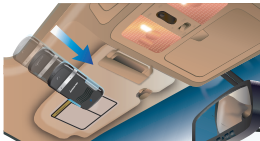
Recommended Way of Using Your Car Kit

On the sun-visor

1. Slide the Car Kit into the sun-visor mount.



2. Place the Car Kit with sun-visor mount onto the sun visor of your car.



3. Now you can talk safely while driving.

Mounting the Car Kit on the windshield

IMPORTANT NOTE: Before start using the Windshield Mount on your windshield, check the state and local laws and ordinances where you drive. Some state laws prohibit drivers from using suction mounts on their windshields while operating motor vehicles. Other state laws allow the suction mount to be located only in specific locations on the windshield. Many other states have enacted restrictions against placing objects on the windshield in locations that obstruct the driver's vision. It is the user's responsibility to mount the device in compliance with all applicable laws and ordinances.

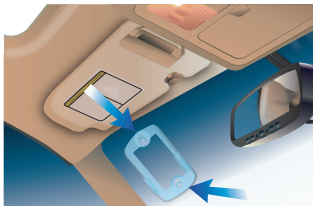
1. Take the Car Kit off the windshield mount.



2. Clean the surface of your windshield where you want to mount the windshield mount.

3. Push and hold the windshield mount against the windshield until the windshield mount is securely attached to the windshield.

Note: If you have problem attaching the windshield mount to your windshield, apply small amount of water and wet the suction cups and try again.




4. Slide your Car Kit back into the windshield mount and now you can charge the Car Kit battery with solar energy.



Connect Car Kit to your Bluetooth enabled cellular phone

1. Turn on the Bluetooth connection on your phone and enable the pairing mode of the Bluetooth connection. Make sure your phone and the Car Kit is no more than 3 feet apart.
2. Make sure the Car Kit is powered off. Long press the MFB button of the Car Kit for 6 seconds to enter the pairing mode.
3. Your cellular phone will now start to look for the Car Kit. When the Car Kit is found, your phone will display "GBHFK231" from the list of devices, and you will be asked to enter the pairing code. Enter "0000" and press OK to establish the connection.



Note: If the pairing process can not be completed within 2 minutes after pairing mode is activated, the Car Kit will power off automatically. Please repeat above steps again to pair your Bluetooth enabled cellular phone and the Car Kit.

Operating the Car Kit with Two Bluetooth enabled phones


Activate multi-point connection

1. The default setting of Car Kit's multi-point connection is off. To turn this on, power on the Car Kit and make sure it is in standby mode. Then press and hold "+" button for 3 seconds until hearing a beeping sound.
2. To turn off this feature, under standby mode, press and hold "-" for 3 seconds until hearing a beeping sound and the Car Kit will power off automatically. When power on the Car Kit again, it will only connect to the last connected Bluetooth enabled cellular phone.

Note: When the multi-point feature is in use, the Car Kit does not support three-way calling feature.

Pair Two Bluetooth enabled cellular phones

1. Before begin to pair two Bluetooth enabled phones with the Car Kit, first you need to make sure to activate the multi-point feature. Please refer to page 18 for instructions.
2. Complete the pairing process with first phone following the steps in page 16.
3. Power off the Car Kit. Press and hold the MFB button for 6 seconds to enter pairing mode again to pair and connect with the second phone following steps in page 16.
4. When the pairing is completed with the second phone, the Car Kit will automatically connect to the first phone.



Note: If the Car Kit does not connect back to the first phone or having problem staying connected with any one of the two phones, try to power cycle the Car Kit and it should reconnect back to the two phones.

Answering call from the second phone during a call on the first phone

When a new call comes in on the second phone, quick tab the MFB button twice to hold the call on the first phone and pick up the call from the second phone. Quick tab the MFB button twice again to switch from the call on the second phone back to the call on the first phone.

Rejecting call from the second phone

When a new call comes in on the second phone, press and hold MFB button for 3 seconds to reject the call from the second phone.

Switch between two calls on two phones

Quick tab the MFB button twice to switch between the calls on two phones. When on an active call, short press MFB button to end the call and stay with the other call.

Using your Car Kit

Power On	Long press the MFB button for 4 seconds until you hear a short beep. The BLUE LED will flash 5 times and the Car Kit will automatically connect to the last connected phone.
Power Off	Long press the MFB button for 4 seconds until you hear a short beep. The RED LED will flash 5 times before powering off.
Answering a Call	Short press the MFB button to answer the call.
Ending a Call	Short press the MFB button to end the call.
Reject a Call	Press and hold MFB button for 2 seconds to reject the call when you hear the ringing tone.

Voice Dial

If you cellular phone voice dialing is enabled, short press the MFB button under standby mode and say the voice tag after hearing a beep.

Note: Please ensure to record voice tag into the cellular phone before using voice dial function. Functionality varies depending on the phone models. Please refer to your cellular phone user manual for details.

Last Number
Re-Dialing

Short press the MFB button twice under standby mode.



Adjusting the Volume	Press the “+” or “-“ button repeatedly until you reach the desired volume level.
Mute	Short press the Mute button during a call to mute and the RED LED will turn on.
Un-Mute	Short press the Mute button during mute mode to un-mute the Car Kit and the RED LED will turn off.
Transferring Call from Car Kit to phone	Press both “+” and “-“ during a call to direct the call from the Car Kit to cellular phone.



Transferring Call
from phone to
Car Kit

Press Both “+” and “-“ to direct the call back from cellular phone back to the Car Kit.

LED Indication

Device Status	LED Status
Power Off	LED Off
Powering On	BLUE LED flash once every 3 seconds
Powering Off	RED LED flash once
Standby Mode	BLUE LED flash twice every 3 seconds
Low Battery	RED LED flash once every 3 seconds



Device Status	LED Status
Call in Progress	BLUE LED flash once every 6 seconds
Pairing Mode	RED and BLUE LED flash alternatively
Charging in Progress	RED LED on
Charging Completed	LED off

Restore to Default Settings

1. When the Car Kit is on and in standby mode, press and hold both “+” and “-“ buttons for 10 seconds until the BLUE and RED LED flash 5 times. Then the Car Kit will enter pairing mode automatically after the reset.
2. When the Car Kit is not powered on, turn on the Car Kit and press and hold both “+” and “-“ buttons for 10 seconds until the BLUE and RED LED flash 5 times. Then the Car Kit will resume standby mode automatically after the reset.

Federal Communications Commission (FCC) Statement

15.21

You are cautioned that changes or modifications not expressly approved by the part responsible for compliance could void the user's authority to operate the equipment.

15.105(b)

This equipment has been tested and found to comply with the limits for a Class B digital device, pursuant to part 15 of the FCC rules. These limits are designed to provide reasonable protection against harmful interference in a residential installation. This equipment generates, uses and can radiate radio frequency energy and, if not installed and used in accordance with the instructions, may cause harmful interference to radio communications. However, there is no

guarantee that interference will not occur in a particular installation. If this equipment does cause harmful interference to radio or television reception, which can be determined by turning the equipment off and on, the user is encouraged to try to correct the interference by one or more of the following measures:

- Reorient or relocate the receiving antenna.
- Increase the separation between the equipment and receiver.
- Connect the equipment into an outlet on a circuit different from that to which the receiver is connected.
- Consult the dealer or an experienced radio/TV technician for help.

THIS DEVICE COMPLIES WITH PART 15 OF THE FCC RULES. OPERATION IS SUBJECT TO THE FOLLOWING TWO CONDITIONS:

1. this device may not cause interference and
2. this device must accept any interference, including interference that may cause undesired operation of the device.

FCC RF Radiation Exposure Statement:

This equipment complies with FCC radiation exposure limits set forth for an uncontrolled environment. End users must follow the specific operating instructions for satisfying RF exposure compliance. This transmitter must not be co-located or operating in conjunction with any other antenna or transmitter.

CE Statement

This device has been tested and found to comply with the requirements set up in the council directive on the approximation of the law of member states relating to EMC Directive 89/336/EEC, Low Voltage Directive 73/23/EEC and R&TTE Directive 99/5/EC.

The product has been approved for LVD and covered the following countries: Belgium, Denmark, France, Germany, Italy, Portugal, U.K., Spain, Sweden

Limited Warranty

IN NO EVENT SHALL THE DIRECT VENDOR'S LIABILITY FOR DIRECT, INDIRECT, SPECIAL, INCIDENTAL OR CONSEQUENTIAL DAMAGES RESULTING FROM THE USE OF THE PRODUCT, DISK, OR ITS DOCUMENTATION EXCEED THE PRICE PAID FOR THE PRODUCT.

The direct vendor makes no warranty or representation, expressed, implied, or statutory with respect to the contents or use of this documentation, and especially disclaims its quality, performance, merchantability, or fitness for any particular purpose. The direct vendor also reserves the right to revise or update the device or documentation without obligation to notify any individual or entity of such revisions, or updates. For further inquiries please contact IOGEAR.

Contact

IOGEAR

19641 Da Vinci

P 949.453.8782

Foothill Ranch, CA 92610

F 949.453.8785

Visit us at: www.iogear.com

© 2009 IOGEAR® Part No. M1344

IOGEAR, the IOGEAR logo, are trademarks or registered trademarks of IOGEAR, Inc. Microsoft and Windows are registered trademarks of Microsoft Corporation. All other brand and product names are trademarks or registered trademarks of their respective holders. IOGEAR makes no warranty of any kind with regards to the information presented in this document. All information furnished here is for informational purposes only and is subject to change without notice. IOGEAR, Inc. assumes no responsibility for any inaccuracies or errors that may appear in this document.

Download from Www.Somanuals.com. All Manuals Search And Download.

Customer's Record

The model number and serial number of this product can be found on the product package. You should note this serial number in the space provided below and retain this book, plus your purchase receipt, as a permanent record of your purchase to aid in identification for Warranty Service purposes.

Model Number _____

Serial Number _____



About Us

FUN

IOGEAR offers connectivity solutions that are innovative, fun, and stylish, helping people enjoy daily life using our high technology products.

GREEN

IOGEAR is an environmentally conscious company that emphasizes the importance of conserving natural resources. The use of our technology solutions helps reduce electronic waste.

HEALTH

IOGEAR supports healthy and fit lifestyles. By integrating products with the latest scientific developments, IOGEAR's solutions enhance the life of end-users.

Free Manuals Download Website

<http://myh66.com>

<http://usermanuals.us>

<http://www.somanuals.com>

<http://www.4manuals.cc>

<http://www.manual-lib.com>

<http://www.404manual.com>

<http://www.luxmanual.com>

<http://aubethermostatmanual.com>

Golf course search by state

<http://golfingnear.com>

Email search by domain

<http://emailbydomain.com>

Auto manuals search

<http://auto.somanuals.com>

TV manuals search

<http://tv.somanuals.com>