



# Installation Guide

2-Port USB KVM with File Management

GCS642U

PART NO. M1190



## Table of Contents

System Requirements	6	Keyboard Emulation	23
Overview	7	Troubleshooting	25
LED Display Status	9	Factory Default Settings	27
Hardware Setup	10	Specifications	28
Basic KVM Operations	13	CE Statement	30
Hotkeys Summary Table	14	Federal Communications Commission (FCC) Statement	31
File Management	16	Contact	32
File Transfer	18	Limited Warranty	33
File Sync	20		



This manual uses the following conventions: Monospaced Indicates text that you should key in.

[ ] Indicates keys you should press. For example, [Enter] means to press the Enter key. If keys need to be chorded, they appear together in the same bracket with a plus sign between them: [Ctrl+Alt].

1. Numbered lists represent procedures with sequential steps.

- Bullet lists provide information, but do not involve sequential steps.

→ Indicates selecting the option (on a menu or dialog box, for example), that comes next. For example, Start → Run means to open the Start menu, and then select Run.



Indicates critical information.

## Package Contents

- 1 x 2 port USB KVM with File Transfer
- 1 x User Manual
- 1 x Warranty Card

Verify all the components are present and that nothing was damaged in shipping. If you encounter a problem, contact your dealer, or IOGEAR.

Read this manual thoroughly and follow the installation and operation procedures carefully to prevent any damage to the unit, and / or any of the devices connected to it

# System Requirements

## Console

- A VGA, SVGA, or multisync monitor capable of the highest resolution that you will be using on any computer in the installation
- A USB keyboard and a USB mouse
- Microphone and speakers (optional)

## Computers

The following equipment must be installed on each computer that is to be connected to the system:

- A VGA, SVGA, or multisync video port
- USB Type A ports
- Microphone and speaker ports (optional)

## Operating System

- Windows XP, Windows Vista (32-bit / 64-bit)
- Windows 7 (32-bit / 64-bit)\*

Note: File management AP is supported by Windows OS only

## Overview



1. **Port LEDs**  
A port LED lights to indicate that the computer attached to its corresponding port has the KVM focus.
2. **KVM Cables**  
These cables attach to the computers in your installation.
3. **Console Ports**  
The cables from your USB mouse, monitor, and USB keyboard plug in here. The ports are marked with an icon on the bottom panel to indicate which is which.
4. **Speaker Jack**  
Your console speakers plug in here.
5. **Microphone Jack**  
Your console microphone plugs in here.



1. **Speaker (Green)**  
Plugs into the computer's speaker port
2. **Keyboard/Mouse (Purple)**  
Plugs into any available Type A USB port on the computer
3. **Video**  
Plugs into the computer's VGA port
4. **File Transfer (Black)**  
Plugs into any available Type A USB port on the computer. Note: If there is only one USB port on the computer, you can connect a USB hub to the computer, then plug the Keyboard/Mouse cable (purple) and then the File Transfer cable (black) into the USB hub
5. **Microphone (Pink)**  
Plugs into the computer's speaker port



## LED Display Status

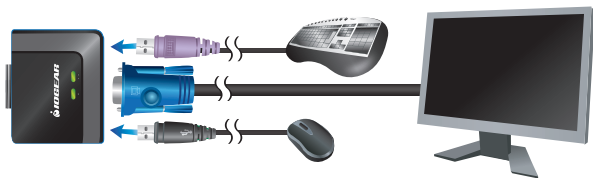
Status	Indication
Orange On/Off	Port is selected / Port is not selected
Green On	Port is connected to an active computer
Flashing (one)	Port is connected to an active computer and is being accessed in Auto Scan Mode or under Keyboard/ Mouse USB Sync
Flasing (all)	File transfer/sync is in operation

## Hardware Setup

**!** Please Make sure that power to all the devices you will be installing has been turned off. You must unplug the power cords of any computers that have the Keyboard Power On function

### Step1

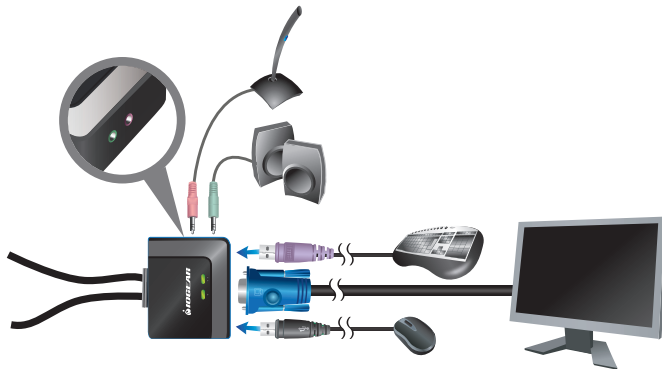
Plug your USB keyboard, USB mouse, and monitor into their respective ports on the GCS642U.



Note: If you are using a wireless keyboard and mouse combo, the receiver must plug into the GCS642U's keyboard port in order for the hotkeys to function.

## Step 2

Plug your microphone and speakers into their respective jacks.



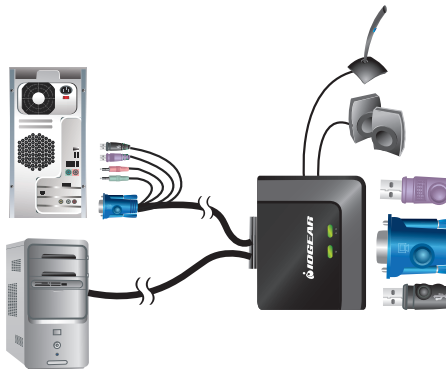
### Step 3

Plug the USB (purple first, then black), video, and audio connectors of the attached KVM cables into their respective ports on the computers you are installing.

**Note:** If there is only one USB port on the computer, you can connect a USB hub to the computer, then plug the Keyboard/Mouse cable (purple) and then the File Transfer cable (black) into the USB hub.

After you are all cabled up, you can power on the computers and peripherals. **The GCS642U's power on default is to link to the first computer that is powered on.**

Turn on your computers.



## Basic KVM Operations

### Port Switching

Tap the Scroll Lock key twice to toggle the KVM, USB, and Audio focus between the two ports.

Note: If you prefer, you have the Ctrl key be the toggle key (see Hotkey Summary Table, page 14)

### Mouse Port Selection

Simply double-click the scroll wheel on your USB mouse to switch between ports. The mouse port-switching function allows you to toggle back and forth between the ports.

1. This feature is only supported by USB 3-key scroll wheel mice.
2. The default setting is OFF.
3. This feature is only supported when mouse emulation is also enabled.

### Hotkey Port Selection

All hotkey operations begin by invoking hotkey mode:

1. Hold down the Num Lock key.
2. Press and release the minus key.
3. Release the Num Lock key..

**Note:** If using [Num Lock] conflicts with other programs, [Ctrl] can be used instead (see Hotkey Summary Table, page 14)

## Hotkeys Summary Table

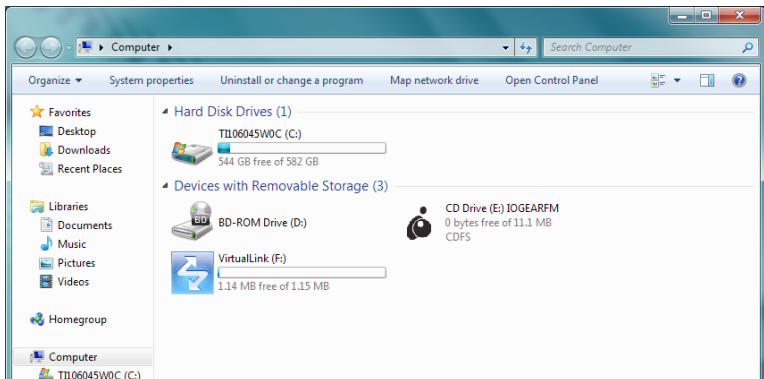
Combination		Configuration
[Num Lock] [-]	[H]	To toggle between the default ([Num Lock] [-]) and alternate ([Ctrl] [F12]) hotkey mode invocation keys:
	[T]	To toggle between the default ([Scroll Lock] [Scroll Lock]) and alternate ([Ctrl] [Ctrl]) port switching keys:
	[N]	To Enable / Disable keyboard hotkey emulation. (Disable for use with gaming keyboards.)
	[M]	To Enable / Disable mouse emulation.
	[W]	To Enable / Disable mouse port switching.
	[E]	To Enable / Disable power-on detection.
	[D] [Enter]	To invoke Video DynaSync™
	[F2]	To activate Mac keyboard mapping:
[F3]	To activate Sun keyboard mapping:	

Combination		Configuration
[Num Lock] [-]	[F10]	To auto detect the keyboard operating platform:
	[F4]	To list the current switch settings via the paste function of a text editor.
	[F5]	To perform a USB keyboard and mouse reset:
	[F6] [nn] [Enter]	To set the keyboard language layout: Note: nn is a two-digit number that represents one of the following keyboard language codes: 33 – US English 08 – French 15 – Japanese
	[r] [Enter]	To reset the hotkeys to their default setting.
	[A]	To start Auto Scanning with default 5 sec. scan interval
	[n] [Enter]	To change the scan interval after Auto Scan has started. Note: n is a number from 1–4 as follows: 1 = 3 sec; 2 = 5 sec; 3 = 10 sec; 4 = 20 sec.
[Scroll Lock] [Scroll Lock]	To switch ports.	
[Esc] or [Space Bar]	To exit hotkey or auto scan mode.	

## File Management

The drivers necessary for performing file management operations are built into the GCS642U's firmware. The first time you plug the file transfer USB cables into your computers,

Windows finds and installs them. When you open the Windows file Explorer, two new "drives" appear: IOGEAR FM, and Virtual Link.



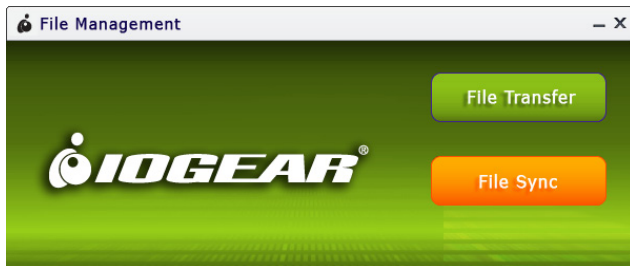


Virtual Link simply provides a buffer for the file management utility; it performs no other function. To perform file management operations, click the File Management icon on both computers.

If the file management main screen doesn't appear, click the file management executable file that appears in the folder that comes up. The file management main screen appears:

The main screen offers two operations: File Transfer and File Sync, as described in the sections that follow.

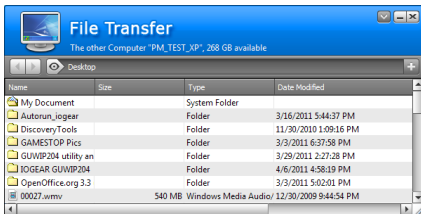
For best file transfer performance, the recommended system memory capacity is 4GB or above.



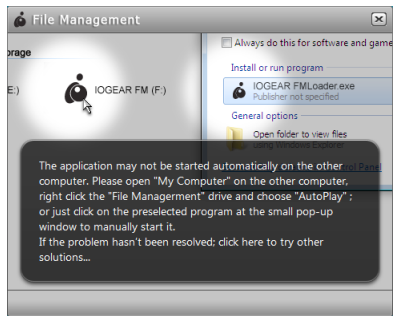
## File Transfer

To perform file transfer operations, click the **File Transfer** button on the main screen. A folder containing the files on the opposite computer's desktop appears on your screen.

This folder works just like any other folder on your system. You can drag and drop files and folders to and from this folder just as if it were a folder that originated on your system.

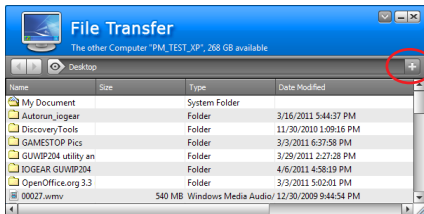


If you see the following screen, you just need to turn on the File Management on the other computer:



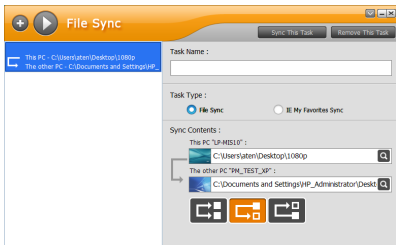
To navigate to other files and folders on the opposite computer, click the button just to the left of the folder name.

To add a new folder under the current one, click the plus sign (+) at the right of the folder name bar.



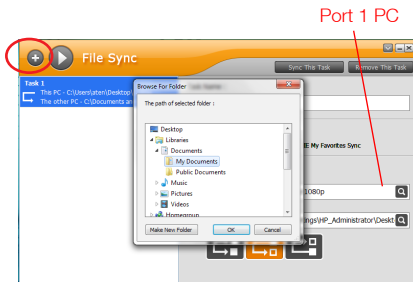
## File Sync

File Sync allows you to sync entire folders between the two computers. The Folder Sync screen allows you to set up the folders you want to sync:

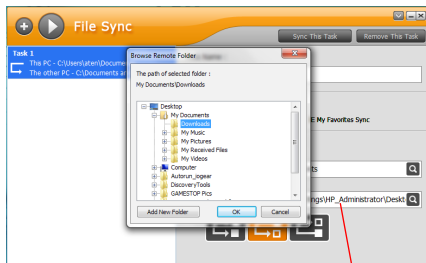


Each File Sync operation is called a task. To begin sync operations:

1. Click the + button at the upper left to add a task.
2. If you want to, give the task a name, key the name in the Task Name field.
3. Select the task type (Folder Sync is the default).
4. Navigate to the desired folder on the Port 1 PC.



5. Navigate to the desired folder on the Port 2 PC.



Port 2 PC

6. Select your sync choice:

- a. Merge the two folders. In other words, copy the files from the Port 1 folder to the Port 2 folder, and copy the files from the Port 2 folder to the Port 1 folder – so that both folders are the same, and both contain all the files that were originally on each of them separately.



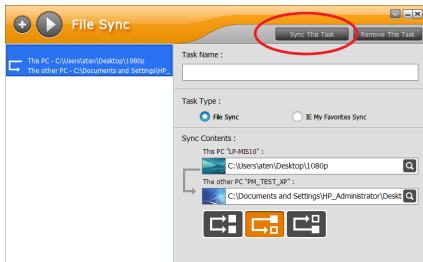
- b. Copy the files from the Port 1 folder to the Port 2 folder, but do not copy the files from the Port 2 folder to the Port 1 folder.



- c. Copy the files from the Port 2 folder to the Port 1 folder, but do not copy the files from the Port 1 folder to the Port 2 folder.



7. Once you have made your selections, click Sync This Task, at the top right of the screen



You can choose to set up more than one task. Each one appears as a list entry in the left panel.







**To run the tasks one by one**, first select the desired task in the left panel, then click Sync This Task, at the top right of the screen.



**To run them all at the same time**, click the triangle button (at the right of the + button) at the top left of the screen.

**To remove a task**, first select the desired task in the left panel, then click Remove This Task, at the top right of the screen.

Note: This utility has online help to guide you through each of the procedures.








## Keyboard Emulation

PC Keyboard	Mac Keyboard
[Shift]	Shift
[Ctrl]	Ctrl
	
[Ctrl] [1]	
[Ctrl] [2]	
[Ctrl] [3]	
[Ctrl] [4]	
[Alt]	Alt

PC Keyboard	Mac Keyboard
[Print Screen]	F13
[Scroll Lock]	F14
	=
[Enter]	Return
[Backspace]	Delete
[Insert]	Help
[Ctrl] 	F15

Note: When using key combinations, press and release the first key (Ctrl), then press and release the activation key

PC Keyboard	Sun Keyboard
[Ctrl] [T]	Stop
[Ctrl] [F2]	Again
[Ctrl] [F3]	Props
[Ctrl] [F4]	Undo
[Ctrl] [F5]	Front
[Ctrl] [F6]	Copy
[Ctrl] [F7]	Open
[Ctrl] [F8]	Paste
[Ctrl] [F9]	Find
[Ctrl] [F10]	Cut

PC Keyboard	Sun Keyboard
[Ctrl] [1]	
[Ctrl] [2]	
[Ctrl] [3]	
[Ctrl] [4]	
[Ctrl] [H]	Help
	Compose
	

Note: When using key combinations, press and release the first key (Ctrl), then press and release the activation key



## Troubleshooting

Symptom	Possible Cause	Action
the computer connected to GCS642U would not boot	Certain mother BIOS is set to use CD ROM as the 1st boot device.	Please check the boot order in your motherboard BIOS to ensure your operating system hard drive is the first boot device. For more details on how to perform these steps please refer to your motherboard user manual.
Mouse and/or Keyboard not responding.	Improper mouse and/or keyboard reset.	Unplug the cable(s) from the console port(s), then plug it/them back in.
	KVM switch needs to be reset.	Power off all devices on the installation; unplug the KVM switch from the computers; wait five seconds; then replug the switch and power up the computers.
USB devices not responding.	USB ports need to reset.	Unplug the device's USB cable from the USB port on the switch's rear panel, then plug it back in.

Symptom	Possible Cause	Action
Device not recognized (Windows).	Windows timing problem.	Unplug the KVM cable from the computer's USB port; go into Windows' System Settings and remove the Unknown Device entry; plug the KVM cable back in. Windows will now recognize the device.
Cannot switch ports by pressing [Scroll Lock] twice	Keyboard is incompatible with Scroll Lock invocation.	Switch to the Alternate port switching keys (see Hotkey Configuration, page 11).
Cannot invoke Hotkey Mode using [Num Lock][-]	Incorrect operation for invoking Hotkey Mode.	Hold the [Num Lock] key, press and release the [Minus] key, then release the [Num Lock] key. The [Caps Lock] and [Scroll Lock] LEDs will flash together to indicate that the unit is in Hotkey Mode.
	Keyboard is incompatible with [Num Lock] invocation.	Switch to the alternate Hotkey Mode invocation keys (see Hotkey Configuration, page 11).

## Factory Default Settings

Function	Default Setting
Auto Scan Interval	5 seconds
Port Switching Hotkey	[Scroll Lock] [Scroll Lock]
Invoking HSM	[Num Lock] + [-],
Keyboard Operating Platform	PC Compatible
Mouse Emulation	Enabled
Mouse Switching Function	Disabled
Keyboard Emulation	Enabled
Power On Detection	Enabled

## Specifications

Function			GCS642U
Computer Connections			2
Port Selection			Hotkeys; Mouse
Connectors	Console Ports	Keyboard	1 x USB Type A Female (White)
		Video	1 x HDB-15 Female (Blue)
		Mouse	1 x USB Type A Female (White)
		Speakers	1 x Mini Stereo Jack Female (Green)
		Microphone	1 x Mini Stereo Jack Female (Pink)
	KVM Ports	Keyboard / Mouse	2 x USB Type A Male (Purple)
		Video	2 x HDB-15 Male (Blue)
		Speakers	2 x Mini Stereo Jack Female (Green)
		Microphone	2 x Mini Stereo Jack Female (Pink)
	File Transfer		2 x USB Type A Male (Black)
LEDs	Selected / On Line	2 (Orange/Green)	

Function		GCS642U
Cable Length	Computers	2 x 0.9 m
Emulation	Keyboard / Mouse	USB
Video		2048 x 1536; DDC2B
Scan Interval		3, 5, 10, 20 secs. (default 5 secs.)
Environment	Operating Temp.	0–50°C
	Storage Temp.	-20–60°C
	Humidity	0–80% RH, Non-condensing
Physical Properties	Housing	Plastic
	Weight	0.43 kg
	Dimensions (L x W x H)	8.24 x 6.99 x 2.52 cm

## CE Statement

This device has been tested and found to comply with the following European Union directives: Electromagnetic Capability (89/336/EMC), Low Voltage (73/23/EEC) and R&TTED (1999/5/EC).

## Federal Communications Commission (FCC) Statement

This equipment has been tested and found to comply with the limits for a Class B digital device, pursuant to Part 15 of the FCC Rules. These limits are designed to provide reasonable protection against harmful interference in a residential setting. This product generates, uses, and can radiate radio frequency energy and, if not installed and used as directed, it may cause harmful interference to radio communications. Although this product complies with the limits for a Class B digital device, there is no guarantee that interference will not occur in a particular installation.

## Contact

### **IOGEAR**

19641 Da Vinci

Foothill Ranch, CA 92610

P 949.453.8782

F 949.453.8785

Visit us at: [www.iogear.com](http://www.iogear.com)

© 2011 IOGEAR® Part No. M1190

IOGEAR, the IOGEAR logo, are trademarks or registered trademarks of IOGEAR. Microsoft and Windows are registered trademarks of Microsoft Corporation. All other brand and product names are trademarks or registered trademarks of their respective holders. IOGEAR makes no warranty of any kind with regards to the information presented in this document. All information furnished here is for informational purposes only and is subject to change without notice. IOGEAR assumes no responsibility for any inaccuracies or errors that may appear in this document.



## Limited Warranty

**WE'RE HERE TO HELP YOU!**

**NEED ASSISTANCE SETTING UP THIS PRODUCT?**

**Make sure you:**

1. Use the live chat at [www.iogear.com](http://www.iogear.com) to try and solve any issues you may be having with the product
2. Visit the Tech Info Library/FAQ on [www.iogear.com](http://www.iogear.com) (under the Support tab)
3. Call the support line at 1(866) 946-4327 (U.S. only) or (949) 453-8782

### **Warranty Information**

This product carries a 3 Year Limited Warranty. For the terms and conditions of this warranty, please go to <http://www.iogear.com/support/warranty> or call 1-866-946-4327

Register online at <http://www.iogear.com/registration>

### **Important Product Information**

Product Model \_\_\_\_\_

Serial # \_\_\_\_\_

## About Us



### FUN

IOGEAR offers connectivity solutions that are innovative, fun, and stylish, helping people enjoy daily life using our high technology products.



### GREEN

IOGEAR is an environmentally conscious company that emphasizes the importance of conserving natural resources. The use of our technology solutions helps reduce electronic waste.

## Free Manuals Download Website

<http://myh66.com>

<http://usermanuals.us>

<http://www.somanuals.com>

<http://www.4manuals.cc>

<http://www.manual-lib.com>

<http://www.404manual.com>

<http://www.luxmanual.com>

<http://aubethermostatmanual.com>

Golf course search by state

<http://golfingnear.com>

Email search by domain

<http://emailbydomain.com>

Auto manuals search

<http://auto.somanuals.com>

TV manuals search

<http://tv.somanuals.com>