

# 2.5" USB 2.0 ION™ Drive Hi-Speed Portable External Hard Drive

---

## Quick Start Guide

Read this guide thoroughly and follow the installation and operation procedures carefully to prevent any damage to the unit and/or any of the devices it connects to. Please refer to the electronic manual on the IOGEAR CD for further instructions on your new ION™ Drive.

Package contains:

- 1 2.5" ION™ Drive
- 1 Hi-Speed USB 2.0 (Type A to Mini-B) Cable
- 1 IOGEAR® Installation CD with Electronic Manual
- 1 Quick Start Guide
- 1 Warranty/Registration Card

Copyright © 2003 IOGEAR  
All brand names and trademarks  
are the registered property of their  
respective owners

PKG-M0061/QS



# 1. Welcome

Thank you for purchasing IOGEAR's ION™ Drive, one of the fastest and slimmest Hi-Speed portable external Hard Drives on the market. IOGEAR® only manufactures high quality storage devices, so we are sure you will be satisfied with your purchase. IOGEAR® is dedicated to customer service and satisfaction, and wishes you the best with your new ION™ drive.

Once again, IOGEAR® brings the cutting-edge technology of today and tomorrow to your Macintosh or PC. You will enjoy the convenience and high-speed that has made this technology industry-standard.

Note:  
Your order has been carefully packaged and inspected, and we hope you are pleased with the IOGEAR product you purchased. Please inspect the contents of the package to ensure that you have received all items and that nothing has been damaged. If you discover a problem, please contact your dealer immediately for assistance.

## Contact Information:

949-453-8782

23 Hubble

Irvine, CA 92618

USA

[www.iogear.com](http://www.iogear.com)

[support@iogear.com](mailto:support@iogear.com)



## WARNING!

Your IOGEAR ION™ Drive is ESD sensitive, and can be damaged by static electricity! Please follow proper and safe ESD handling procedures when handling this PCI card, or opening your computer.

Please visit <http://www.esda.org> for information about Electro-Static Discharge.

## 2. Hardware Requirements

To access USB 2.0 speeds, your computer system must be Hi-Speed USB 2.0 enabled. The USB 2.0 ION™ drive will work at USB 1.1 speeds with USB 1.1 enabled computers.

### Macintosh

- Mac OS 8.6 to 9.x\*
- Mac OS X
- Available Hi-Speed USB 2.0 port
- CD-ROM drive

### PC

- PC Compatible, 200MHz or greater
- Windows® 98SE, ME, 2000, XP
- Minimum 64MB RAM
- Available Hi-Speed USB 2.0 port
- CD-ROM drive

\* Will operate as an USB 1.1 device.

\*\* Mac OS X takes advantage both connectivities; USB 2.0 & USB 1.1.

## 3. Features

### Product Features

- Transfer pictures, music, and more at speeds up to 480 Mbps – Transfer 1 GB in under 30 seconds!
- Bus-Powered for mobile operation
- Ideal for backup, storage expansion, file sharing, software installation, and data management
- 2 Hi-Speed connectivity solutions in one (USB 1.1 & USB 2.0)
- Hot-plug capable, hot-swappable, and Plug-N-Play
- Preformatted for your convenience, so you are up and running in no time (those with preinstalled drives)
- USB 2.0 Interface – Supporting high speed data transfer rates of up to 480 Mbps
- Backward – compatible with USB 1.1 specifications
- Compact size – Perfect for the mobile professional!
- Solid three-year limited warranty

## 4. Installing the Hard Drive

### Warning!

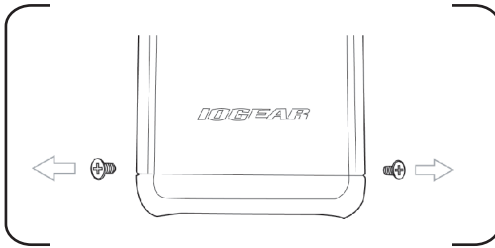
Opening an ION™ Drive with a built-in Hard Drive (GHD225U40, GHD225U60, etc...) WILL VOID YOUR WARRANTY. For assistance with your hard drive, please contact your IOGEAR Service Support representative.

### Step. 1

Before you begin, please have a Phillips head screw driver available.

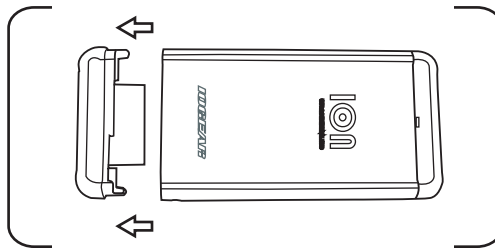
### Step. 2

Unscrew the bottom two screws of the ION™ Drive.



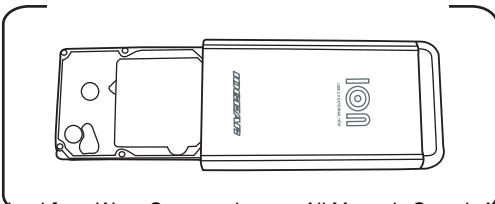
### Step. 3

Gently pull the bottom end cap out of the main body of the ION™ Drive.



### Step. 4

Slide your 2.5" HDD into the bottom of the ION™ Drive **label side up**, with the hard drive connector pins pointing to the top of the drive.

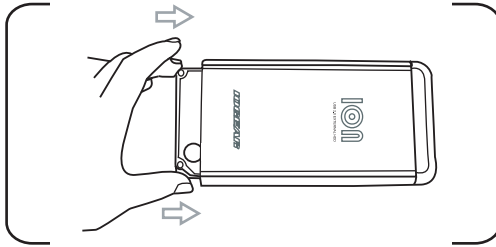


## Step. 5

Line up the hard drive evenly into the inside of the enclosure.

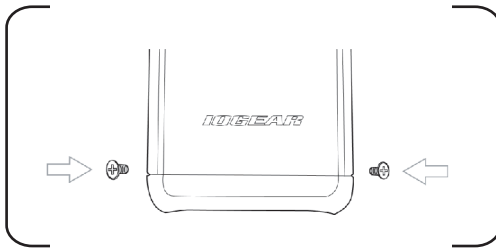
## Step. 6

Gently (**DO NOT FORCE**) push the bottom of HDD into the top of the enclosure.



## Step. 7

To complete the installation, simply replace the bottom screws.



# 5. Software Installation

## FOR WINDOWS® 98SE

### Step. 1

Once the ION™ Drive has been plugged in, the following window should appear. (If the drive automatically loads you will not need to continue.) Click **Next** to continue.



## Step. 2

In the next window, please select “Search for the best driver for this device” and click **Next** to continue.



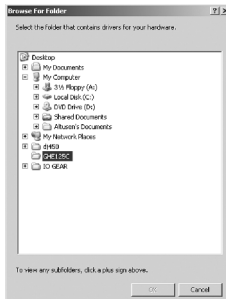
## Step. 3

The next window will allow you to point the driver search to a specific folder. Please select the “Specify a location:” button and click **Browse...**



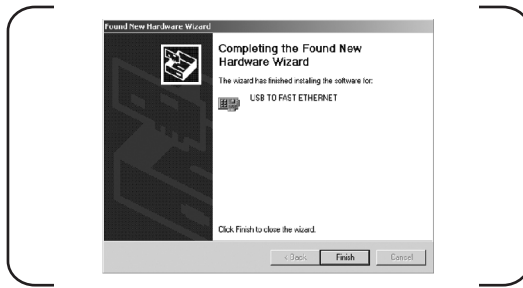
## Step. 4

In the "Browse" window locate the IOGEAR installation CD. Open the CD and find the folder “GHE225C”. Once inside this folder, click **OK** to continue. Then click **Next** to continue.



## Step. 5

Once you have finished with Step 4, click **Finish** to complete the installation process.



Note: The OK button will become active once the folder with the driver is selected.

At the end of the installation process, you may be asked to insert your Windows CD-ROM. Simply follow the on screen instructions to complete this process.

---

## FOR MACINTOSH – OS X

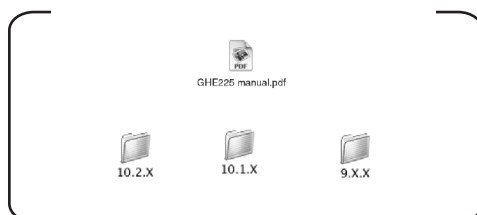
### Step. 1

Open Combo “ION™ Drive” Folder.



### Step. 2

Open Mac OS X folder that corresponds to your OS X installation. Either **10.1.x** for 10.1.5 or before, or choose **10.2.x** for 10.2 or later.



### Step. 3 ▼

Double click on ION™ Installer.pkg.



### Step. 4 ▼

Enter your Administrator Password and click **OK**.

### Step. 5 ▼

Click **Continue** when prompted.

### Step. 6 ▼

Again, click **Continue** when prompted.

### Step. 7 ▼

Select **Destination**. Make sure to choose the partition that has OS X. Then click **OK**.

### Step. 8 ▼

Now click **Next** on the following screen.

### Step. 9 ▼

The computer will prompt you that the installation will require a reboot. Click **continue Installation**.

### Step. 10 ▼

After the installation is complete. select **Restart**. Once your computer has finished rebooting, you are ready to take full advantage of new ION™ Drive.





## FOR MACINTOSH – OS 9

### Step. 1 ▼

Open Combo ION™ Drive Folder.

### Step. 2 ▼

Open **Mac OS 9.x** folder.

### Step. 3 ▼

Double Click on **Install Cypress MSC Driver**.

### Step. 4 ▼

When complete click **OK**.



Congratulations! You have completed installing the IOGEAR ION™ Drive.

## 6. Radio and TV Interference

This equipment has been tested and found to comply with the limits for a Class B digital device, pursuant to Part 15 of the FCC Rules. These limits are designed to provide reasonable protection against harmful interference in a residential installation. This equipment generates, uses and can radiate radio frequency energy and if not installed and used in accordance with the instructions, may cause harmful interference to radio communications. However, there is no guarantee that interference will not occur in a particular installation

IN NO EVENT SHALL THE DIRECT VENDOR'S LIABILITY EXCEED THE PRICE PAID FOR THE PRODUCT FROM DIRECT, INDIRECT, SPECIAL, INCIDENTAL, OR CONSEQUENTIAL DAMAGES RESULTING FROM THE USE OF THE PRODUCT, DISK OR ITS DOCUMENTATION.

## 7. Warranty

IN NO EVENT SHALL THE DIRECT VENDOR'S LIABILITY FOR DIRECT, INDIRECT, SPECIAL, INCIDENTAL OR CONSEQUENTIAL DAMAGES RESULTING FROM THE USE OF THIS PRODUCT, DISK, OR ITS DOCUMENTATION EXCEED THE PRICE PAID FOR THE PRODUCT.

The direct vendor makes no warranty or representation, expressed, implied, or statutory with respect to the contents or use of this documentation, and especially disclaims its quality, performance, merchantability, or fitness for any particular purpose.

The direct vendor also reserves the right to revise or update the device or documentation without obligation to notify any individual or entity of such revisions, or updates. For further inquiries please contact your direct vendor.

## Free Manuals Download Website

<http://myh66.com>

<http://usermanuals.us>

<http://www.somanuals.com>

<http://www.4manuals.cc>

<http://www.manual-lib.com>

<http://www.404manual.com>

<http://www.luxmanual.com>

<http://aubethermostatmanual.com>

Golf course search by state

<http://golfingnear.com>

Email search by domain

<http://emailbydomain.com>

Auto manuals search

<http://auto.somanuals.com>

TV manuals search

<http://tv.somanuals.com>