

Bluetooth™ GPS with Navigation Software

Hardware Quick Start Guide (GBGPS201)



Download from [Www.Somanuals.com](http://www.Somanuals.com). All Manuals Search And Download.



©2004 IOGEAR. All Rights Reserved. PKG-M0129

IOGEAR, the IOGEAR logo, MiniView, VSE are trademarks or registered trademarks of IOGEAR, Inc. Microsoft and Windows are registered trademarks of Microsoft Corporation. IBM is a registered trademark of International Business Machines, Inc. Macintosh, G3/G4 and iMac are registered trademarks of Apple Computer, Inc. IOGEAR makes no warranty of any kind with regards to the information presented in this document. All information furnished here is for informational purposes only and is subject to change without notice. IOGEAR, Inc. assumes no responsibility for any inaccuracies or errors that may appear in this document.

Download from [Www.Somanuals.com](http://www.Somanuals.com). All Manuals Search And Download.

The IOGEAR Bluetooth GPS system is a real-time navigation system. The Bluetooth GPS receiver allows you to receive positioning data from satellites and connect to mobile computing devices via Bluetooth, without cables. It provides high position accuracy and reliable tracking capabilities. The ultra low-power design and long-life rechargeable battery gives you 25 hours of continuous usage and eliminates constant recharging between uses. It is portable and lightweight, so you can put it on the dashboard or any other location that provides a direct line of sight to the sky.

You will never get lost again!

Features

Bluetooth enabled GPS system to take advantage of your Bluetooth enabled PDA or computer*

Map and navigation software included

Highly sensitive unit to assure effective tracking and navigating

Superior power saving circuitry to allow at least 25 hour operation

Class 2 Bluetooth device.

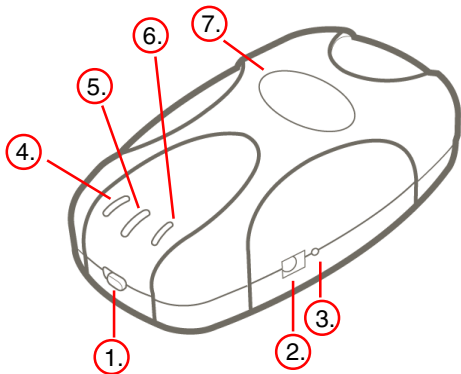
Easy to connect the GPS receiver to your favorite mobile devices

Package Contents

This package contains:

- 1 Bluetooth GPS receiver
- 1 AC-DC Charger
- 1 Car Charger
- 1 Pouch
- 1 Neck Strap
- 1 Quick Start Guide for Hardware
- 1 Quick Start Guide for Map Software
- CDs with User Documentation, GPS software and Map data
- 1 Warranty/Registration Card

Introduction



1. Power Switch

To turn the IOGEAR GPS unit ON/OFF, slide the switch towards the desired position as indicated below.

ON – Slide switch to the right position to turn on

OFF – Slide switch to the left position to turn it off

2. Power Jack

Before you can use the IOGEAR GPS unit, you need to charge it for approximately 3 hours to fully charge. In the box, you should have received both an AC-DC charger, and car charger

- AC Charger – Can be connected to any power outlet found in your home.
- DC Charger – For vehicle use; connects to the cigarette lighter port.

To charge the built-in battery, simply connect one of the included chargers to the power jack on your GPS unit.

3. Reset Switch

The main function of the reset switch is to perform a Cold Start of the GPS unit. Essentially, a cold start wipes off all the data - such as satellite IDs, position information, etc. - stored in the GPS memory. After the GPS unit is "cold-started" it will obtain all required information from scratch.

Instances when you would need to do a cold start of the GPS unit include:

GPS cannot establish communication with the satellites even after long periods of waiting

You have moved to another location (such as to a different state/country) with the GPS unit OFF and now it cannot establish its position

Cold-Start Procedure

1. Turn the GPS ON
2. Press and hold the reset button for 5 seconds
3. Release reset button

After performing a cold-start, the GPS unit should take about 5 minutes to establish its position, since it needs to gather all GPS data from scratch. However, depending on your location/environment, this process may take up to 15 minutes.

Introduction

4. GPS Status LED (Green) (GPS)

- Blinking - GPS receiver is attempting to establish position.
- Steady light - indicates the GPS position is established..

5. Bluetooth Status LED (Blue)

- Slow Blinking (every four seconds) – GPS receiver is ready to accept Bluetooth connections, but is not yet connected to any Bluetooth device.
- Fast Blinking (every second) – GPS receiver has established communication with another Bluetooth device.

6. Power Status LED (Yellow/Orange/Red)

- No light – If the unit is ON, it indicates the receiver is operating on battery power and has sufficient charge
- Steady yellow light - Battery is charging and GPS is ON
- Steady orange light – Battery is charging and GPS is OFF
- Blinking red light - indicates a battery fault. This can occur if the GPS unit is exposed to extreme temperature conditions. In this case, place the GPS in a location that allows it to return to a normal operating temperature.
- Steady red light – indicates system fault. This occurs when internal electrical damage or system malfunction is detected.

7. External Antenna Jack

The external antenna jack allows you to connect an external antenna in cases when it's not possible for the GPS unit to have a direct view to the sky. This may be the case if your vehicle does not have an area where you can easily mount your GPS unit. Another instance is if your vehicle's surrounding causes interference with the GPS wireless signals. With the external antenna, you can place the GPS unit anywhere on your vehicle and mount the antenna on the roof.

Requirements

Safety

Carefully read all instructions before using the IOGEAR GPS unit and set-up all your equipment in the car before driving. DO NOT attempt to follow any of the instructions provided here while you drive as this may present danger not only to yourself but to others on the road as well.

When using this unit, make sure to obey all traffic laws and regulations. Always use good judgment and safety precautions.

Extreme Temperatures

The Lithium-Ion battery inside the GPS unit is sensitive to extreme temperatures. Do not leave the receiver in a location where temperatures are higher than 60° C (140° F). In case of extreme temperatures, please allow the GPS to warm or cool before normal operation.

Obstruction and Interference

The first time you power on your GPS unit, it may take up to 15 minutes to establish its position. The actual amount of time it takes to establish its position, may increase or decrease, depending on many environmental factors.

Among the factors that could cause interference are:

- Tall buildings
- Enclosed or Indoor areas
- Metal or other type of objects that interfere with wireless signals

For best results, have the GPS unit in a place where it has a clear view to the sky and away from large/tall structures.

Operation

HARDWARE

Step 1: Charging Battery

Before you can use the GPS receiver, you need to fully charge the internal battery. Plug one of the included chargers into the GPS power Jack and then to your power source. The GPS receiver needs to be charged for approximately 3 hours for a full charge. A fully charged unit will give you about 25 hours of continuous operation.

Step 2: Establish GPS Position .

1. Slide the power switch of the GPS towards the ON position.
2. Your receiver will automatically begin accepting GPS and Bluetooth signals when the power is turned on.

3. Establish GPS Position

The green GPS LED will glow continuously while the GPS position is being established, which may take up to 15 minutes the first time the unit is turned on.

Once the GPS has established position, the GPS LED will remain steady. If the GPS receiver does not establish position after about 15 minutes, try placing/moving the unit to a different where it has a clear view of the sky.

Once you have established GPS position (green LED is steady), proceed to next step below.

4. Bluetooth Connectivity

The blue LED will blink approximately every four seconds to let you know the Bluetooth radio is active and ready to accept a Bluetooth connection.

Please follow the steps below to establish Bluetooth communication between your GPS and Bluetooth

PDA/Laptop

Once you establish connection with your Bluetooth device, the blue LED will remain solid blue.

Note: If you encounter any connectivity problems, please consult User Manual for advanced troubleshooting.

Step 3: Connect GPS Receiver to your Bluetooth-enabled device

In order to connect the IOGEAR GPS receiver to your Bluetooth-enabled device, you will have to establish a Serial Port connection between the two devices. The instructions below are to demonstrate an example on how this is setup; this will probably vary depending on your equipment and the Bluetooth software version that you are using.

If you have any problems establishing the connection between the GPS receiver and your Bluetooth device, please consult the manual of your Bluetooth device. Also, for more detailed instructions, consult the User manual of your IOGEAR Bluetooth GPS unit.

Connect GPS Receiver to your PDA

Check List

Complete the following checklist before beginning operation:

- Navigation software application and maps are correctly installed on your PDA.
- Bluetooth GPS battery is fully charged
- PDA battery is fully charged, if not directly connected to a power outlet
- Verify that Bluetooth functionality is enabled and working on your PDA.

Operation

1. Make sure Bluetooth is ON.
2. Tap on the Bluetooth icon to access the Bluetooth services on your PDA.
3. Tap on “Bluetooth Manager” to open it.
4. Tap on “New” and then select “Connect”



5. Make sure “Explore a Bluetooth device” is highlighted and then tap “Next”

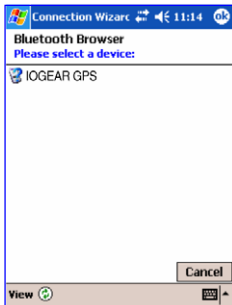


6. Tap the box where it says “No Device selected”



Operation

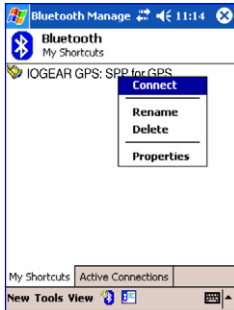
7. Tap the icon "IOGEAR GPS" When prompted for a PIN code, enter "0000" (four zeroes).
8. Under the Service Election Tap "SPP for GPS" and then click "Next"



9. Tap "Finish"



10. Tap and hold until sub menu appears, then select Connect



Operation

11. Close Bluetooth Manager
12. You may now proceed to the "GPS Software Quick Start Guide" to complete the GPS connection setup.

Note: In some cases, the Bluetooth connection between your PDA and GPS may be terminated if not used within a specified time interval. Please make sure that when you follow the steps in the "Configure Software to use with GPS" section of the software quick start guide, that your Bluetooth connection is still active. If it isn't, please re-establish the connection again.

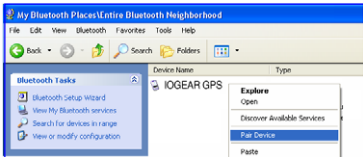
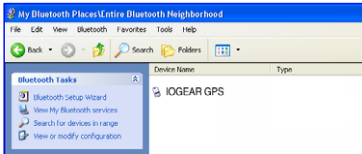
Connect GPS Receiver to your Laptop

In the example below, the Bluetooth software used was Widcomm stack version 1.4.2. The procedure given here is for your reference and may vary depending on your Bluetooth software and version that you are using.

1. Make sure that Bluetooth is ON. In our case, this is shown by the blue/white Bluetooth icon on the Windows tray bar.

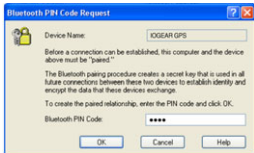


2. Double-click on the “My Bluetooth Places” icon to open the Bluetooth software. And then do a “Search for devices in range” to discover the Bluetooth GPS unit.
3. Right-click on the GPS unit and select “Pair Device” from the pop-up menu.

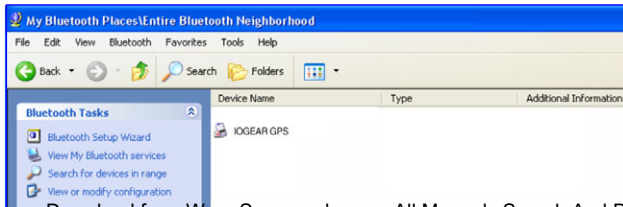


Operation

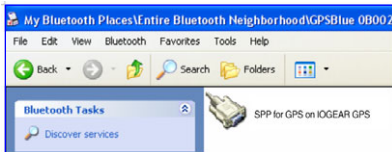
4. When prompted to enter PIN code, please enter "0000" (four zeroes), and then click OK.



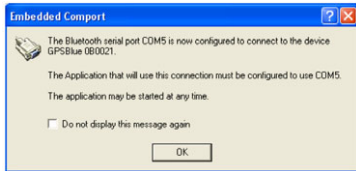
5. When prompted to enter PIN code, please enter "0000" (four zeroes), and then click OK.



6. Double-click on the GPS icon to see a list of the services offered by this device. The service offered by the unit is the Serial Port service. To connect to the serial port, please double-click on the icon.



7. Your laptop will then start connecting to the serial port on the GPS. Upon connection, you should receive a message informing you of the COM port # used for connection. In our case, the laptop connected to COM 5 on the GPS unit. Simply click OK and close your Bluetooth software.



Operation

8. You may now proceed to the "GPS Software Quick Start Guide" to complete the GPS connection setup.

Note: In some cases, the Bluetooth connection between your computer/GPS may be terminated if not used within a specified time interval. Please make sure that when you follow the steps in the "Configure Software to use with GPS" section of the software quick start guide, that your Bluetooth connection is still active. If it isn't, please re-establish the connection again.



Contact info.

23 Hubble • Irvine, CA 92618 • (P) 949.453.8782 • (F) 949.453.8785 • www.iogear.com

Download from Www.Somanuals.com. All Manuals Search And Download.

Free Manuals Download Website

<http://myh66.com>

<http://usermanuals.us>

<http://www.somanuals.com>

<http://www.4manuals.cc>

<http://www.manual-lib.com>

<http://www.404manual.com>

<http://www.luxmanual.com>

<http://aubethermostatmanual.com>

Golf course search by state

<http://golfingnear.com>

Email search by domain

<http://emailbydomain.com>

Auto manuals search

<http://auto.somanuals.com>

TV manuals search

<http://tv.somanuals.com>