

# Wireless RF Keyboard/Optical Mouse Combo

---

*User Manual (GKM531R)*



**©2006 IOGEAR. All Rights Reserved. M0391**

IOGEAR, the IOGEAR logo, are trademarks or registered trademarks of IOGEAR, Inc. Microsoft and Windows are registered trademarks of Microsoft Corporation. IBM is a registered trademark of International Business Machines, Inc. Macintosh, G3/G4 and iMac are registered trademarks of Apple Computer, Inc. All other brand and product names are trademarks or registered trademarks of their respective holders. IOGEAR makes no warranty of any kind with regards to the information presented in this document. All information furnished here is for informational purposes only and is subject to change without notice. IOGEAR, Inc. assumes no responsibility for any inaccuracies or errors that may appear in this document.

## Table of Contents

Welcome	02
Package Contents	03
Features	04
Requirements	05
Introduction	06
Hardware Installation	14
Software Installation (Windows 98/ME/2000/XP)	17
Mouse Configuration	23
Function Keys	29
FAQs/Troubleshooting	34
Specification	35
Technical Support	37
Radio & TV Interference Statement	38
Limited Warranty	39

## Welcome

Thank you for purchasing the Wireless RF Keyboard/Optical Mouse Combo. Enjoy the freedom of wireless connectivity with IOGEAR's wireless keyboard/mouse combo. The keyboard and mouse allow you to work up to 6 feet away from the USB receiver connected to your computer. In addition, the optical mouse provides great accuracy over most surfaces and minimal hand movement due to its 800 dpi resolution.

Enjoy the freedom of wireless connectivity with IOGEAR's wireless keyboard/mouse combo. The keyboard and mouse allow you to work up to 6 feet away from the USB receiver connected to your computer. In addition, the optical mouse provides great accuracy over most surfaces and minimal hand movement due to its 800 dpi resolution. The ultra thin, and stylish keyboard offers mobility and comfort wherever you type. Take complete control of your desktop with hotkeys. The different hotkeys give you quick access to some of your most common tasks such as e-mail access, volume control, play/pause your CD, launching My Computer, Calculator, Media Player, and your web browser - at the push of a button. In addition, the included software makes your web surfing experience much more efficient with the use of Enhanced function keys. The customizable function keys, allow you to launch your favorite websites to make your web experience easy and convenient.

### **This package contains:**

- 1 Wireless keyboard
- 1 Wireless mouse
- 1 Charging station/receiver
- 1 Power adapter
- 1 Utility software CD
- 1 User manual
- 1 Warranty/registration Card
- 2 AA Ni-MH Rechargeable Batteries for the mouse
- 2 AAA batteries for the keyboard

## Features

- Great wireless range offers up to 6 feet distance
- Control keyboard and mouse with one single USB receiver
- Less hand movement with 800 dpi mouse
- Ultra thin, stylish, and portable keyboard lets you enjoy true wireless freedom
- Hotkeys give you quick access to some of your most common tasks such as e-mail access, volume control, play/pause your CD, launching My Computer, Calculator, Media Player, and your web browser - at the push of a button
- Rechargeable mouse batteries save you time and money; simply place the mouse in the charging station to charge the batteries
- Reprogrammable function keys let you fully customize the keyboard to fit your web surfing needs
- Optical mouse delivers precise cursor movement and can be used on most surfaces
- Easy Installation has you running in minutes
- Slim design for comfortable usage
- Solid 3-year limited warranty

### **PC System**

- Windows 98/SE/ME/2000/XP

### **MAC System**

- MAC OS X (10.2.x or later)\*

\*Multimedia/Function keys not supported

## Introduction

### Keyboard-Front View

01. Battery LED – turn red when batteries are getting weak
02. House button – launches your default web browser
03. Envelop button – launches your email program such as Outlook Express or Outlook
04. Star button – gives you quick link to your favorite websites
05. Magnify glass button – launches search program
06. Play/Pause button – play or pause your music or video CD
07. Forward button – fast forward your music or video CD
08. Volume Down button – decrease the volume of your system
09. Mute button – mute button to turn volume off
10. Volume Up button –increase the volume of your system
11. Computer button – launches My Computer
12. Calculator button – launches Calculator program
13. CD button – launches your default media player program
14. Moon button – takes your computer into sleep mode

(Refer to the image on next page)



## Keyboard-Front View





## **Keyboard-Back View**

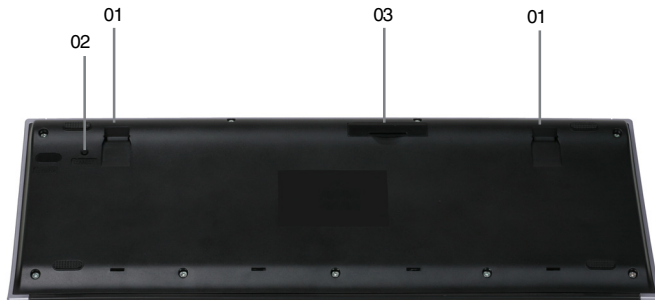
01.Foldable legs – allow you to adjust the angle of the keyboard

02.Connect button – press to connect to the receive

03.Battery compartment – store the two batteries

(Refer to the image on next page)

## Keyboard-Back View

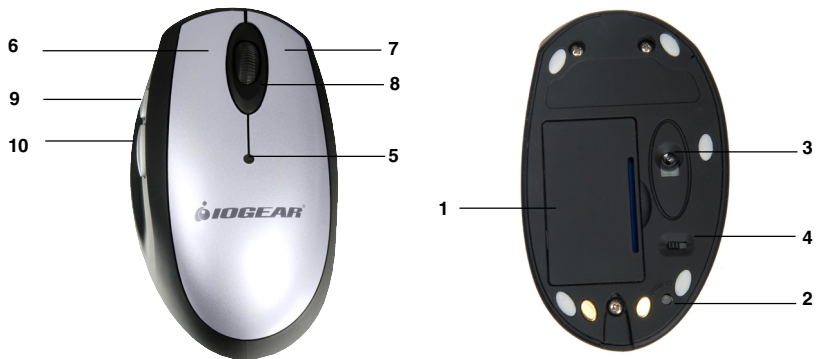


## Introduction

### Mouse

1. Battery Compartment – place the included batteries here
2. Connect Button – press and hold button to establish connection to receiver
3. Optical Sensor – 800 dpi optical sensor
4. ON/OFF Switch – turn mouse ON/OFF for extended battery life
5. Power LED – turns on when the mouse is charging
6. Left-click button
7. Right-click button
8. Scroll Wheel (button #3)
9. Programmable button (button #4)
10. Programmable button (button #5)

(Refer to the image on next page)



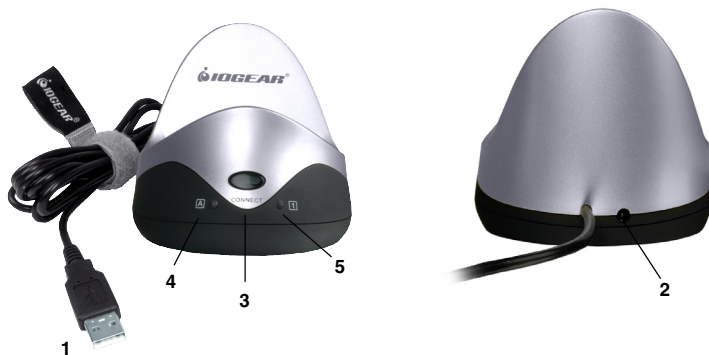
## Introduction

### **USB Receiver/Charger**

1. USB Type A cable – connect cable to USB port on your computer
2. Power Jack – plug the power to charge batteries
3. Connect Button – press this button to connect receiver to keyboard/mouse
4. Caps Lock LED – turns on when Caps Lock key is pressed
5. Num Lock LED - turns on when Num Lock key is pressed

(Refer to the image on next page)

## USB Receiver/Charger



## Hardware Installation

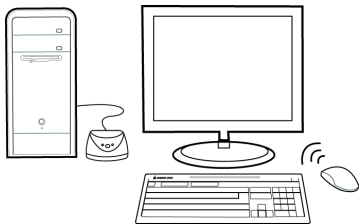


Fig1. Finished Setup

### 1. Batteries installation

The first step is the installation of the batteries. Open the battery compartment of the mouse and put the two rechargeable batteries in the compartment and then close it. Plug the AC/DC adapter into the charging cradle and allow batteries to charge for at least 2 hours. Open up the battery compartment of the keyboard and install the 2 batteries provided in the package.

**WARNING:** Do not place regular AAA batteries into the mouse battery compartment and try to charge via the USB Charging station as this will possibly damage your equipment.



### **2. Replace existing keyboard and mouse with the new IOGEAR Wireless Keyboard/Mouse combo**

Checklist – please check the following before proceeding:

- Make sure your system has an available USB port and the OS supports USB Hot-plugging
- You have connected the USB receiver to your computer (your computer should detect it and install all necessary drivers automatically)

#### **CONNECT THE MOUSE**

1. Look for the ON/OFF switch on the bottom of the mouse and make sure that it is set to the ON position
2. Press the Connect button on the USB receiver; the connect LED will light up green.
3. Press and hold the connect button, located on the bottom of the mouse, for a few seconds

4. Move the mouse around and make sure that it is functioning properly. If the mouse does not work, please repeat the procedure again.

#### **CONNECT THE KEYBOARD**

1. Press the Connect button on the USB receiver; the connect LED will light up green
2. Press and hold the connect button, located on the bottom of the keyboard, for a few seconds
3. Tap the keys on the keyboard or type something to verify that it is working properly. If it doesn't work, please repeat the procedure again

Note: If your system has any problems detecting the wireless keyboard and mouse, please turn off your computer before following the steps above. With your computer turned off, connect the USB receiver to an available USB port, and then power on your computer. Upon boot-up, the system should detect the wireless keyboard/mouse combo, and install all necessary drivers automatically.

## Hardware Installation

### 3. Install the wireless combo on a brand new computer system

- Before you turn on the system, make sure the batteries are installed for both keyboard and mouse and mouse batteries have been charged for at least two hours;
- Plug the USB charging station/receiver into an available USB port on your computer
- Power ON your computer
- Upon boot-up, your Operating System should detect the IOGEAR wireless keyboard/mouse combo and install any drivers, if necessary.
- Press the connect button on the USB Receiver
- Press the connect button located on the bottom of the mouse for a few seconds
- Move the mouse and make sure it is working properly
- Press the connect button on the USB Receiver
- Press the connect button located on the bottom of the keyboard for a few seconds
- Your IOGEAR Wireless Keyboard/Mouse Combo should now work wirelessly. If not, repeat the steps above again.

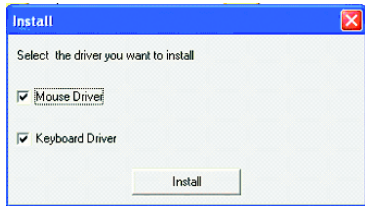
## Software Installation

**Note:** There is no software for MAC Operating System; multimedia/functions keys are not supported on MAC platform.

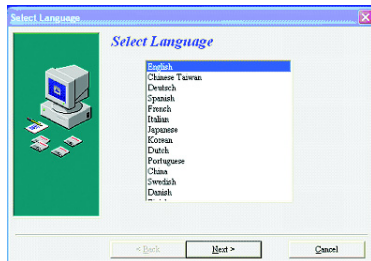
### Windows 98SE/ME/2000/XP

1. Insert the utility software CD into the computer
2. The installation will Auto-start and prompt you to install the Keyboard and Mouse drivers.

Please make sure both boxes are checked and click Install.

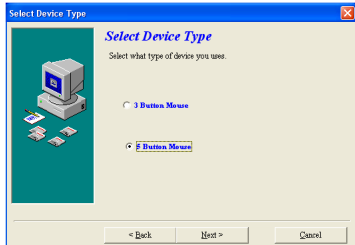
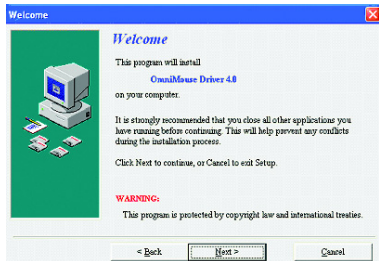


3. Select your desired language and click Next.



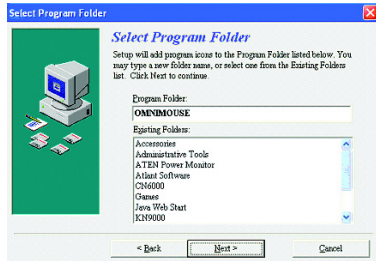
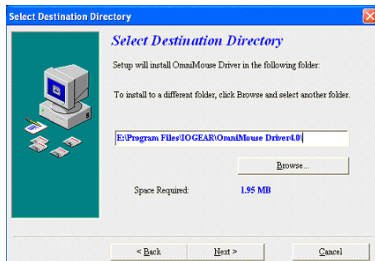
## Software Installation

4. On the Welcome screen, click Next to proceed with the driver installation
5. For the mouse type, please select 5 Button Mouse and then click Next.



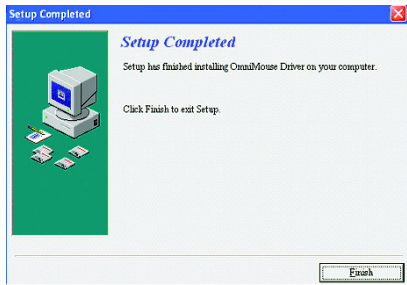
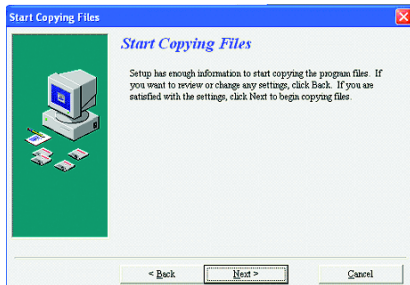
## Software Installation

6. Select the destination directory for installation and then click Next.
7. Enter a program folder name and click Next.

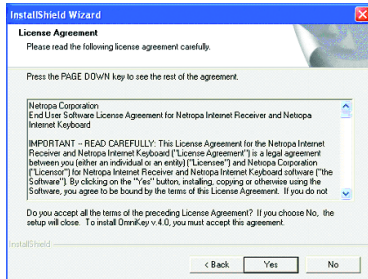
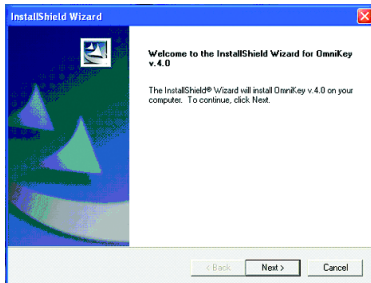


## Software Installation

- To start copying the installation files, please press Next.
- Once setup is completed, press Finish to end the installation.

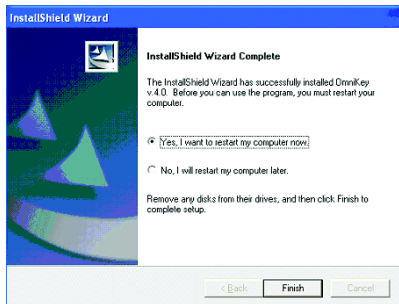


10. If you also selected the “Keyboard Driver” box at the beginning of the installation, the keyboard drivers will install next. Press Next to continue.
11. Read the License Agreement and press Next.



## Software Installation

12. Upon completion of driver installation, you will have to restart your computer.



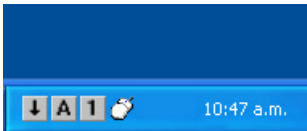


## Mouse Configuration

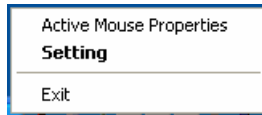
### MOUSE CONFIGURATION

On this part of the configuration, we will show you how to program the mouse programmable buttons (buttons 3, 4, and 5).

1. After you have installed the keyboard and mouse software, and restarted your system, you will see the following icons on your tray bar



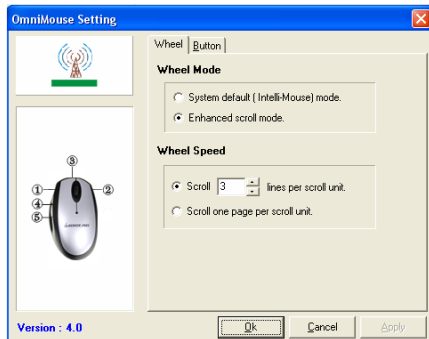
2. Right-click on the mouse icon which will bring up the menu below. Click on Setting to access the mouse settings panel



## Mouse Configuration

### 3. From the tabs on the top, click on Button.

Note: Please ignore the mouse diagram shown on the left-side of this window, as this is provided as an example. To see a diagram of your specific mouse, please refer to the image "Figure 1: Mouse Buttons" where you can clearly identify buttons 3, 4, and 5.



**Figure 1: Mouse Buttons**



## Mouse Configuration

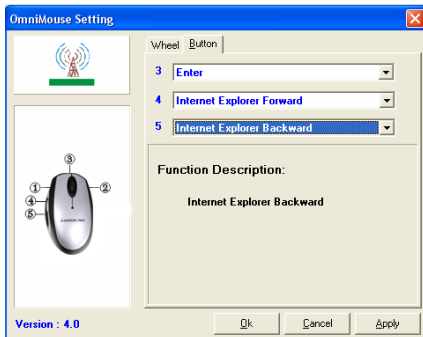
- As you can see on the right-hand side panel, you can assign a function to the mouse programmable buttons 3, 4, and 5 from this window. To do this, click on "System Default" to see a list of the functions that can be assigned to each of the mouse buttons.

**Note:** If you don't see the options shown below under the Button tab, it may be the case that you selected a 3-button mouse during installation, instead of a 5-button mouse. To correct this, simply reinstall the mouse drivers from the Installation CD and make sure to choose 5-button mouse.



## Mouse Configuration

5. As an example, we will assign the following functions to the mouse:
- Button 3** (scroll wheel) – Enter [this is the equivalent of a left-click on the mouse]
  - Button 4** – Internet Explorer Forward [this is the equivalent of pressing the forward button on your web browser]
  - Button 5** – Internet Explorer Backward [this is the equivalent of pressing the backward button on your web browser]



## Mouse Configuration

6. Once you have assigned a function to each mouse button, simply click OK to apply the changes.

**Tip:** If you wish to assign a different function to the mouse buttons in the future, simply follow the same procedure and select a different function for each button. If you wish to disable any of the buttons (3, 4, 5), simply set that button to “System Default.”

### Function Keys on the Keyboard

Once you have installed the Keyboard drivers from the Installation CD, the functions keys (F2 through F12) on your IOGEAR Wireless keyboard will have added functionality when using your web browser. These functions are supported for the following web browsers: Internet Explorer, Netscape Navigator, AOL, or NeoPlanet.

Each function key (with the exception of F1 and F5), is pre-programmed to launch a specific web site, when pressed. Furthermore, the function keys are organized into categories that include web sites for Auctions, Entertainment, Shopping, and so on.

### Using the Function Keys

1. Open your default web browser
2. Press any function key (other than F1 and F5) to launch one of the pre-programmed web sites.

## Function Keys

### Customizing the Function Keys

You may reprogram the function keys to launch web sites from the pre-defined categories:

1. Open your default web browser
2. Press and hold down the Function key you wish to reprogram. This will bring up a menu like the one shown on the right:
3. From the menu, select a web site that you wish to assign to this function key.
4. The Function key has now been re-programmed.

Technology - F6	
<input checked="" type="checkbox"/> AOL Computing	
CNET	
ZDNet	
Auctions	▶
Community	▶
Entertainment	▶
Finance	▶
Game	▶
Greetings	▶
Mail	▶
Reference	▶
Search	▶
Shopping	▶
Sports	▶
Technology	▶
Travel	▶
Weather	▶
Special	▶
Options	▶
Disable Automatic Online Update	



If you wish to reprogram the function keys to web sites not listed in the category menu, please follow the following procedure:

1. Open your default web browser
2. Go to the website you wish to assign to one of the function keys
3. Press and hold down your desired function key to bring up the configuration menu.
4. Go down the menu and click on Special à Save
5. The Function key has now been re-programmed with the currently active web site.



## Function Keys

### Disable Function Keys

1. Open your default web browser
2. Press and hold down the function key you would like to disable
3. Go down the menu and click on Special → Disable

### Disable All Function Keys

1. Open your default web browser
2. Press and hold down any function key (except F1/ F5) to bring up the configuration menu
3. Go down the menu and click on Options → Exit
4. This will completely disable the special Internet features of the function keys.



### Re-Enable Function Keys

If you followed the procedure above “Disable All Function Keys” and would like to re-enable the function keys, follow the steps below.

1. Go to the Installation directory of the Keyboard drivers and launch the executable application located there
2. Alternatively, you may just restart the computer and the software will launch on the background automatically upon boot-up.

### Uninstall Software

1. Go to Control Panel
2. Select Add/Remove Programs
3. **To remove mouse driver, highlight OmniMouse driver and select Remove/Uninstall**
4. **To remove keyboard driver, highlight OmniKey driver and select Remove/Uninstall**
5. Close all your currently opened windows and save your work
6. Restart your computer

## FAQs and Troubleshooting

### **Q1. When I press the Multimedia keys Volume Up/Down/Mute, nothing happens. What is wrong?**

Some of the multimedia keys will not work until you install the keyboard drivers included on the installation CD. Please be sure to install the drivers.

### **Q2. Why are the function keys not working?**

The Function keys (F2-F12) will act as "shortcut" Internet keys only after the Keyboard drivers from the Installation CD have been installed. If you haven't done so, please install the keyboard drivers.

In addition, the function keys will NOT launch the web browser. You must already have the web browser opened and selected for this function keys to work.

### **Q3. How do I reconfigure the shortcut keys to go to different websites?**

Please see the section in the manual called "Customizing the Function Keys."

### **Q4. The two side-buttons and scroll wheel on the mouse do not work, what is wrong?**

The side-buttons and scroll wheel need to be programmed before they can be used. Please consult the section "Mouse Configuration" in the manual.

## Optical Mouse Technical Specifications

Boutons	4 boutons, 1 molette de défilement
Méthode de contact	Micro-rupteur
Mode de détection du mouvement	Capteur optique
Fréquence de rafraîchissement	80 rapports/s
Résolution	800 ppp
Plage de fréquence	2,4GHZ ~ 2,483GHZ
Modulation	GFSK
Canaux	8 canaux
ID de canal	16bits ? 65000
Portée utile	26 pieds / 10 m.
Tension de fonctionnement	2,0V ~ 3,0V, Moins de 2,2 ± 0,1V avec voyant lumineux allumé
Piles	2 x piles NI-MH
Puissance TX	-5dBm
Vitesse de transmission	250K bit/sec
Tolérance de fréquence FM en TX	±220KHz
Tolérance de fréquence	±20ppm
Autonomie des piles	> 25 heures en mode Actif
Configuration système	PC : Windows 98/SE/ME/2000/XP, MAC : OS X (10.2.x ou version ultérieure)*

## Specification

### Multimedia Keyboard Technical Specifications

Durée de vie des touches	10.000.000 cycles
Méthode de contact	Caoutchouc/Membrane
Plage de fréquence	2,4GHZ ~ 2,483GHZ
Modulation	GFSK
Canaux	8 canaux
ID de canal	16bits ? 65000
Portée utile	26 pieds / 10 m.
Tension de fonctionnement	2,0V ~ 3,0V, Moins de 2,2 ± 0,1V avec voyant lumineux allumé
Piles	2 piles AAA
Puissance TX	-5dBm
Vitesse de transmission	250K bit/sec
Tolérance de fréquence FM en TX	±220KHz
Tolérance de fréquence	±20ppm
Autonomie des piles	> 160 heures en mode Actif
Configuration système	PC : Windows 98/SE/ME/2000/XP, MAC : OS X (10.2.x ou version ultérieure)*

\* The utility software and function keys does not support Mac.

If you need technical support, please check out our IOGEAR Tech Info Library (T.I.L.) at **[www.iogear.com/support](http://www.iogear.com/support)** for the latest tips, tricks, and troubleshooting. The IOGEAR T.I.L. was designed to provide you with the latest technical information about our products. Most of the answers to your questions can be found here, so please try it out before contacting technical support.

Technical support is available Monday through Friday from 8:00 am to 5:00 pm PST and can be reached at (949) 453-8782 or by email **[support@iogear.com](mailto:support@iogear.com)**.

## Radio & TV Interference Statement

**WARNING!!!** This equipment generates, uses and can radiate radio frequency energy and, if not installed and used in accordance with the instruction manual, may cause interference to radio communications. This equipment has been tested and found to comply with the limits for a Class B computing device pursuant to Subpart J of Part 15 of FCC Rules, which are designed to provide reasonable protection against such interference when operated in a commercial environment. Operation of this equipment in a residential area is likely to cause interference, in which case the user at his own expense will be required to take whatever measures may be required to correct the interference.



IN NO EVENT SHALL THE DIRECT VENDOR'S LIABILITY FOR DIRECT, INDIRECT, SPECIAL, INCIDENTAL OR CONSEQUENTIAL DAMAGES RESULTING FROM THE USE OF THE PRODUCT, DISK OR ITS DOCUMENTATION EXCEED THE PRICE PAID FOR THE PRODUCT.

The direct vendor makes no warranty or representation, expressed, implied, or statutory with respect to the contents or use of this documentation, and especially disclaims its quality, performance, merchantability, or fitness for any particular purpose.

The direct vendor also reserves the right to revise or update the device or documentation without obligation to notify any individual or entity of such revisions, or updates. For further inquires please contact your direct vendor.



**Contact info.**

---

23 Hubble • Irvine, CA 92618 • (P) 949.453.8782 • (F) 949.453.8785 • [www.iogear.com](http://www.iogear.com)

Download from [www.Somanuals.com](http://www.Somanuals.com). All Manuals Search And Download.

## Free Manuals Download Website

<http://myh66.com>

<http://usermanuals.us>

<http://www.somanuals.com>

<http://www.4manuals.cc>

<http://www.manual-lib.com>

<http://www.404manual.com>

<http://www.luxmanual.com>

<http://aubethermostatmanual.com>

Golf course search by state

<http://golfingnear.com>

Email search by domain

<http://emailbydomain.com>

Auto manuals search

<http://auto.somanuals.com>

TV manuals search

<http://tv.somanuals.com>