

# Phaser Wireless Track Ball Mouse GME321R USER'S MANUAL

Read this guide thoroughly and follow the installation and operation procedures carefully to prevent any damage to the unit and/or any of devices it connects to:

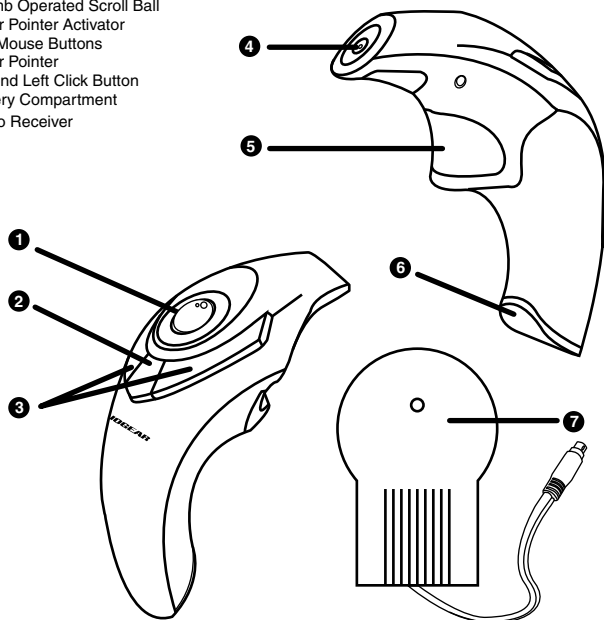
## This package contains:

- 1 Phaser Wireless Trackball Mouse (Model# GME321R)
- 1 Registration Card
- 1 User Manual

© 2001 IOGEAR®. All Rights Reserved.  
All brand names and trademarks are the registered property of their respective owners.  
PKG-M0004v.2

## Pictorial Introduction

1. Thumb Operated Scroll Ball
2. Laser Pointer Activator
3. Two Mouse Buttons
4. Laser Pointer
5. Second Left Click Button
6. Battery Compartment
7. Radio Receiver



## Overview

Congratulations on your new IOGEAR purchase!

The Phaser Wireless Trackball Mouse is of the latest in computer peripheral technology. With the advent of wireless technology in computer mice, the days of wired-mice are a thing of the past. Users of wired-mice all share the common frustrations of short cords, kinks in the wires, and plain functionality. Since the Phaser Wireless Trackball Mouse is completely wire-free, you can browse, surf, or use your computer in comfort, as well as style.

Presentations have never been simpler. With an integrated laser pointer, the Phaser Wireless Trackball Mouse can make your next presentation a snap. Standing in front of a blinding projector is now a thing of the past. The freedom to move around, without being tied-down by ugly cables, brought to you by IOGEAR.

Once again, IOGEAR lays the standard for connectivity!

With a growing number of the general populous with Internet access, we encourage our customers to check out our web site <http://www.iogear.com/support> for general troubleshooting information, FAQ, and other related documents in our T.I.L. (Technical Information Library).

## Contact Information:

23 Hubble Drive Irvine, CA 92618  
(P) 949.428.1111 (F) 949.428.1100  
[www.iogear.com](http://www.iogear.com)

## Installation Instruction

1. With your computer turned off, plug the Radio Receiver into your computer's PS/2 mouse port.
2. Turn your computer on, you will notice that the Phaser has been detected and is working as a regular PS/2 mouse with the trigger (button # x) acting as the left click.

## Operation

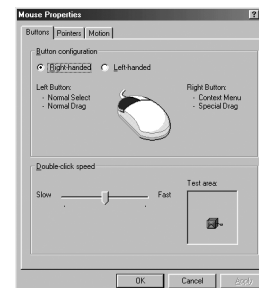
### Mouse Control Panel Instructions

Here you may set the mouse to your hand's preference. If you are left-handed or right-handed, you can set the mouse to accommodate your click preference.

Ex. A left-handed mouse commonly has the left-mouse-button as the primary button and the right-mouse-button is commonly the option button.

Here you may set your preference for mouse clicks. Normally, the user would "double-click" to open a document or folder. You may now choose to "single-click" to open documents in folders. Now one click can equal two clicks.

**Double-Click Speed:** To set the speed of your mouse's double-click speed, you can slide the bar to increase or decrease the amount of time between clicks.



## Features

- Thumb Operated Track Ball
- Operate Up to 50 Feet Under Optimal Environment
- High Band Radio Waves provide for Accurate Cursor Movement
- Built-in Laser Pointer
- Contour Design For Comfortable Use
- Smooth Precision Tracking
- 3 Year Limited Warranty

## Requirement

### For PC Users

Works with Windows® PCs.

## Battery Installation

Remove the holding screw from the bottom of the Phaser which will allow you to detach the bottom cover.

Insert the batteries as shown, ensuring the positive and negative ends match up exactly as shown in the diagram.

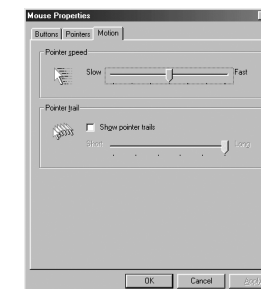
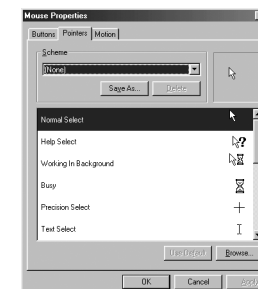
When finished replace the battery cover and holding screw.

## Operation Con'd

### POINTERS TAB

This tab is an extension of your Microsoft Windows Desktop schemes. You may choose different schemes for your mouse icons here.

Pointer Shadow will leave a dark shadow over the desktop, to dramatize the presence of the mouse pointer.



## Operation for Windows 2000

Windows 2000 users, please follow the following steps by using other PS/2 mouse first, or using keyboard:

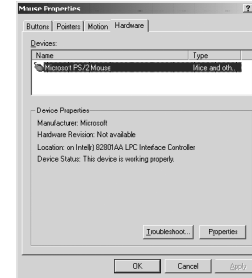
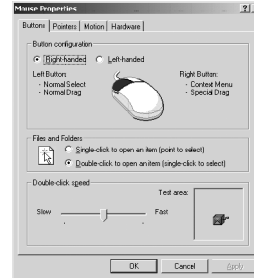
1. Plug in the other mouse (or plug in Phaser and be prepared to do the following steps by using keyboard), turn on the computer. Click on Start menu, select Settings and then Control Panel. (Above steps can be achieved by using TAB and Arrow keys on keyboard).



2. Double click mouse image on Control Panel. (or use Arrow and Enter keys to achieve the same purpose).

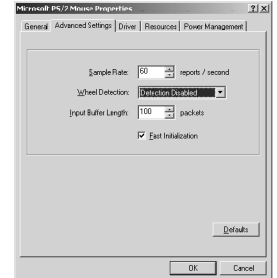
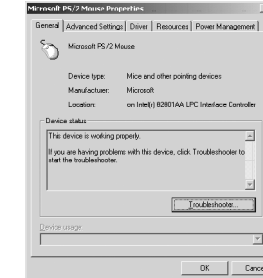
## Operation for Windows 2000 Con'd

3. On the Mouse Properties screen, select Hardware, then click OK (or use TAB, Arrow and Enter keys to achieve the same purpose).
4. Click Properties, (or use TAB and ENTER key to achieve the same purpose).



## Operation for Windows 2000 Con'd

5. Click Advanced Setting, (or use TAB, Arrow, and ENTER keys to achieve the same purpose by using keyboard).
6. In the Wheel Detection Section Choose Detection Disable, then click OK, (same result can be achieved by using TAB and ENTER keys).



## Operation for Windows 2000 Con'd

7. Click Yes, then reboot your computer.



## Specification

Function	Specification
PS2	PS2 Mouse Port
System Support	Window® PC
Optical Laser Color	RED
Power Consumption	2 AAA Batteries for the Phaser Unit and Bus Powered
Color	Metalic Purple and Silver
Housing	Plastic
Weight	2.8 ounces
Dimension (LxWxH)	4.53" x 2.95" x .91" (115mm x 75mm x 23mm)

## Radio & TV Interference Statement

**WARNING!!!** This equipment generates, uses and can radiate radio frequency energy and, if not installed and used in accordance with the instruction manual, may cause interference to radio communications. This equipment has been tested and found to comply within the limits for a class B device, pursuant to Subpart J of Part 15 of the FCC rules. These limits are designed to provide reasonable protection against harmful interference in a commercial environment. Operation of this equipment in a residential area is likely to cause interference, in which case the user at his own expense will be required to take whatever measures may be required to correct the interference. There is no guarantee that radio frequency interference will not be created in particular locations.

IOGEAR® is not responsible for any radio or television interference caused by unauthorized modification of your mechanism or cables.

## Limited Warranty

IN NO EVENT SHALL THE DIRECT VENDOR'S LIABILITY FOR DIRECT, INDIRECT, SPECIAL, INCIDENTAL, OR CONSEQUENTIAL DAMAGES RESULTING FROM THE USE OF THE PRODUCT, DIST ORITS DOCUMENTATION EXCEED THE PRICE PAID FOR THE PRODUCT.

The direct vendor makes no warranty or representation, expressed, implied, or statutory with respect to the contents or use of this documentation, and especially disclaims its quality, performance, merchantability, or fitness for any particular purpose.

The direct vendor also reserves the right to, but not limited to, revise or update the device or documentation without obligation to notify any individual or entity of such revisions, or updates. For further inquires please contact your direct vendor.

## Free Manuals Download Website

<http://myh66.com>

<http://usermanuals.us>

<http://www.somanuals.com>

<http://www.4manuals.cc>

<http://www.manual-lib.com>

<http://www.404manual.com>

<http://www.luxmanual.com>

<http://aubethermostatmanual.com>

Golf course search by state

<http://golfingnear.com>

Email search by domain

<http://emailbydomain.com>

Auto manuals search

<http://auto.somanuals.com>

TV manuals search

<http://tv.somanuals.com>