



# User Manual

## Tacturus™ Wireless Touch Mouse

---

**GME581R**  
PART NO. M1308

[www.iogear.com](http://www.iogear.com)

Designed in California, USA ©2015 IOGEAR® All rights reserved. ATEN is a registered trademark of ATEN International Co., LTD. All other trademarks are the properties of their respective owners. Reproduction in whole or in part without permission is prohibited. Tested to Comply With FCC and CE Standards. FOR HOME OR OFFICE USE. Mac and the Mac logo are trademarks of Apple Computer, Inc. registered in the U.S. and other countries. Specifications subject to change without notice.

# Table of Contents

Introduction	4
Package Contents	4
System Requirements	4
Overview	5
Software Installation	6
Operation	9
Compliance Information	13
Limited Warranty	13
Contact	14

# Introduction

This manual provides instruction on downloading and operating GME581R driver

# Package Contents

- 1 x GME581R
- 1 x AA Battery
- 1 x Quick Start Guide
- 1 x Warranty Card

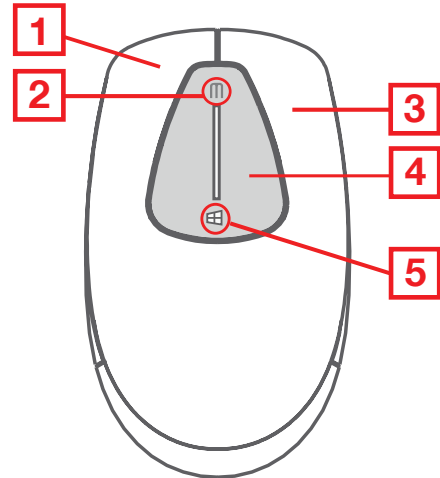
# System Requirements

- Windows Vista<sup>®</sup>, Windows<sup>®</sup> 7, Windows<sup>®</sup> 8, Windows<sup>®</sup> 8.1
- Mac OS X 10.3+\*
- USB

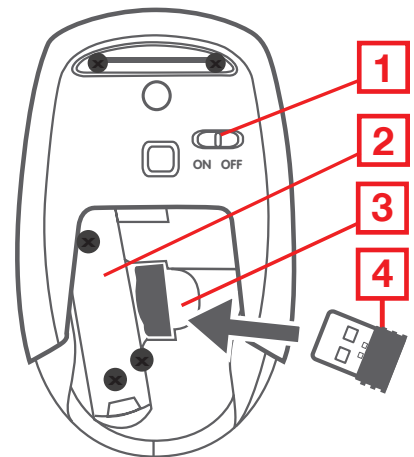
\*Some function keys may not work with older Mac OS Systems

# Overview

1. Left Button
2. Middle Button
3. Right Button
4. Touch Pad
5. Windows Button

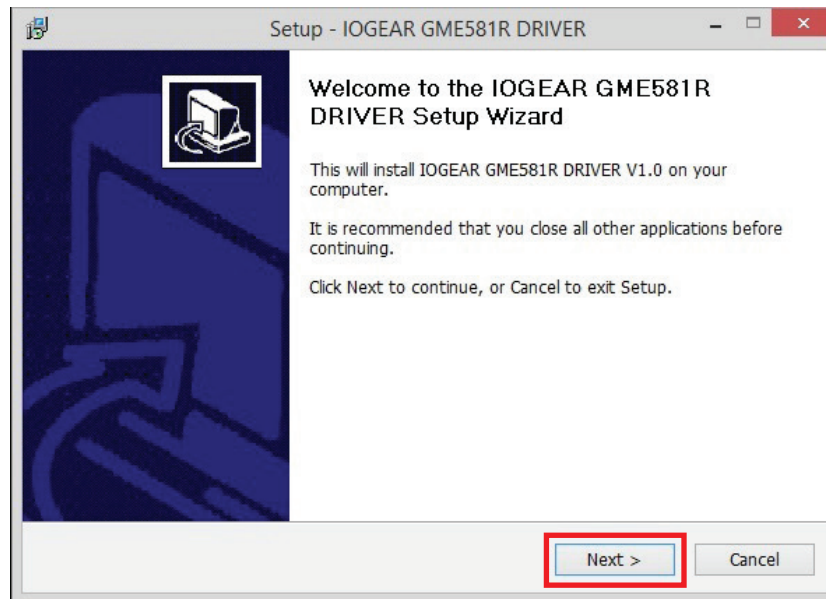


1. ON / OFF Switch
2. Battery Compartment
3. USB Receiver Storage Slot
4. USB Receiver

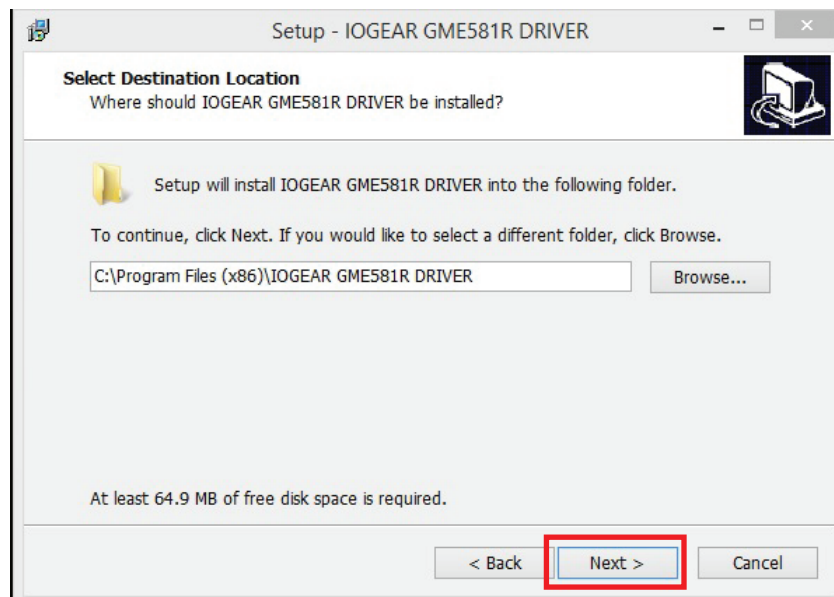


# Software Installation

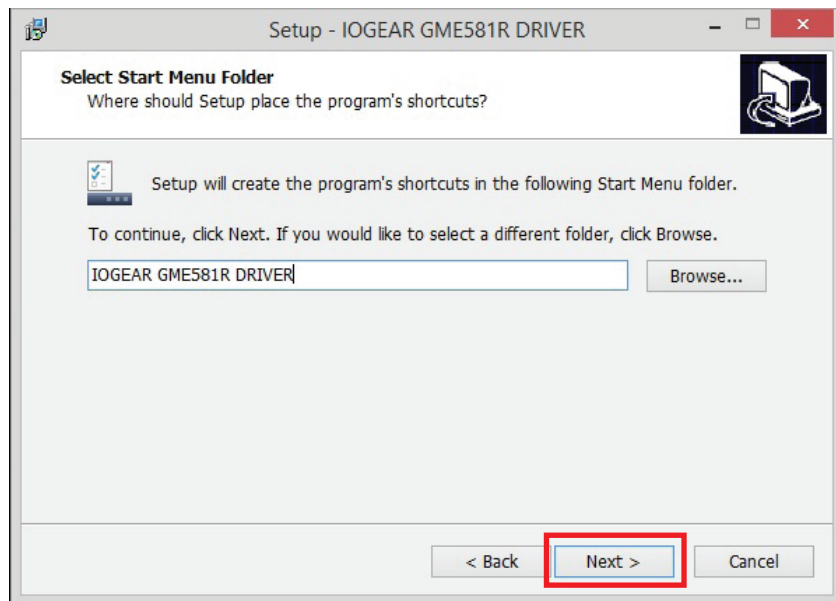
1. Download Tacturus™ driver from <http://www.iogear.com/support/dm/driver/GME581R>
2. Once driver is downloaded, install the driver to your computer by double clicking <Icon> and click **Next**.



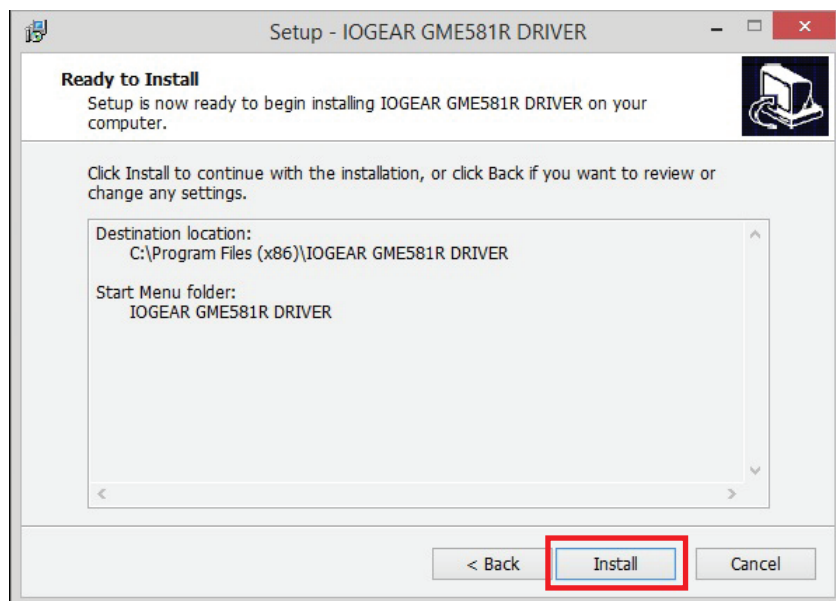
3. Select destination folder for the driver and click **Next** to continue.



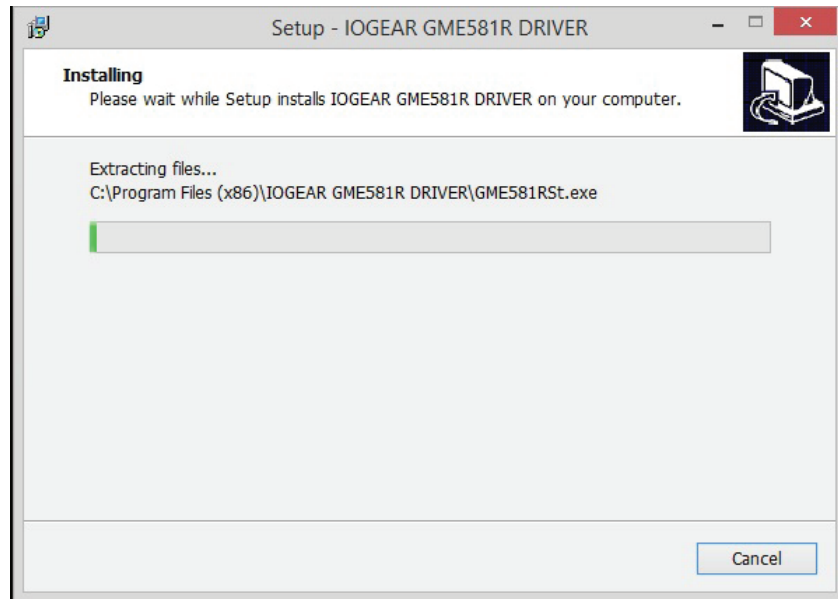
4. Create program shortcut and click **Next** to continue.



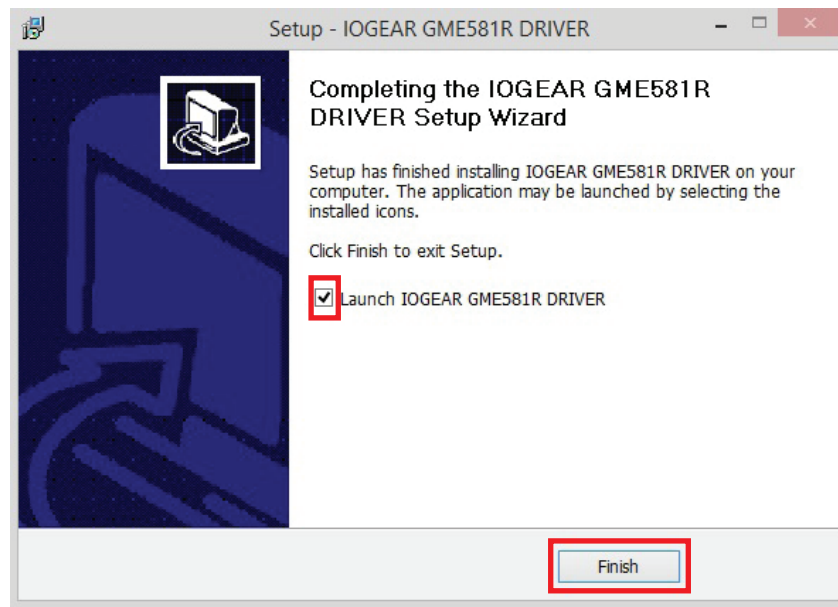
5. Click **Install** to begin installation process.



6. Please wait until installation process is complete.



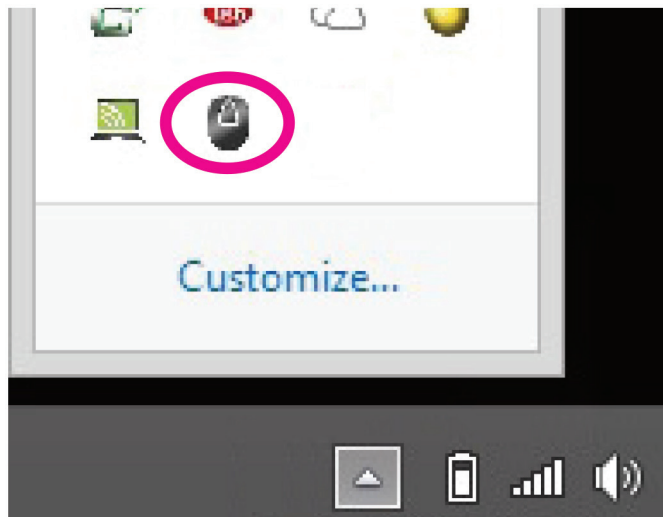
7. Once GME581R driver has been installed, click the **Launch box** and **Finish** to open the driver.





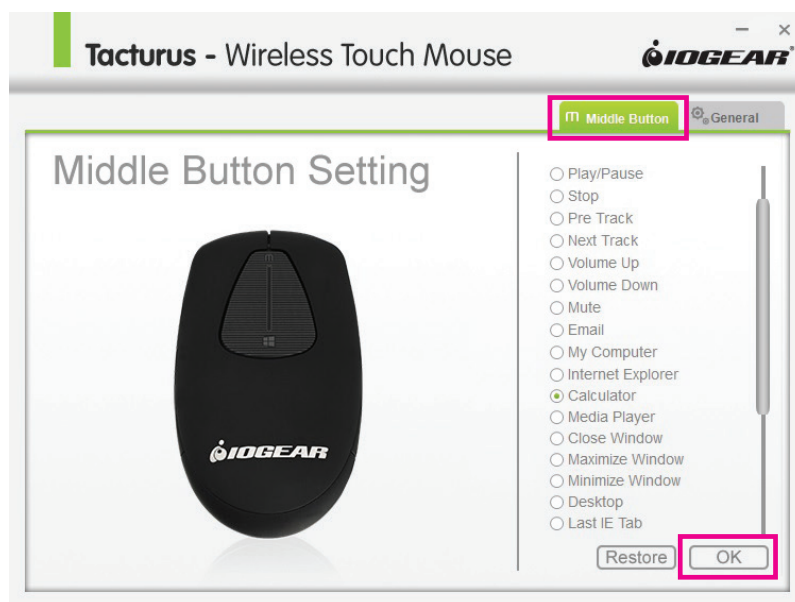
# Operation

Open the GME581R driver by clicking  symbol, located on menu bar on the bottom.

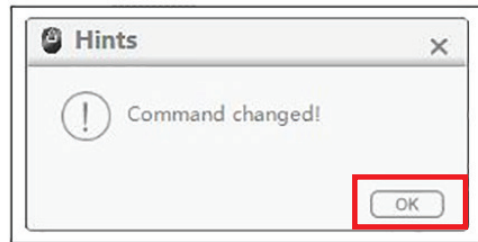


## Middle Button Setting

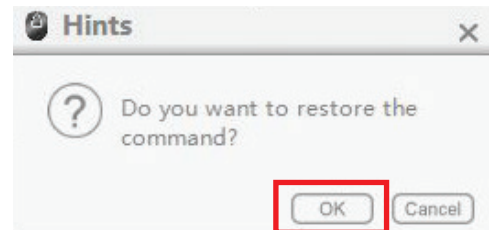
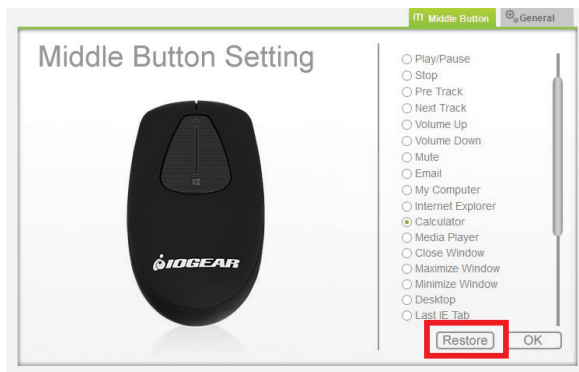
1. Open **Middle Button** menu window to customize middle button on the GME581R.
2. Click desired command for your middle button and click **OK**.



3. Click **OK** to confirm changes made to the setting.



4. Click **Restore** to return to default setting and click **OK** to confirm.

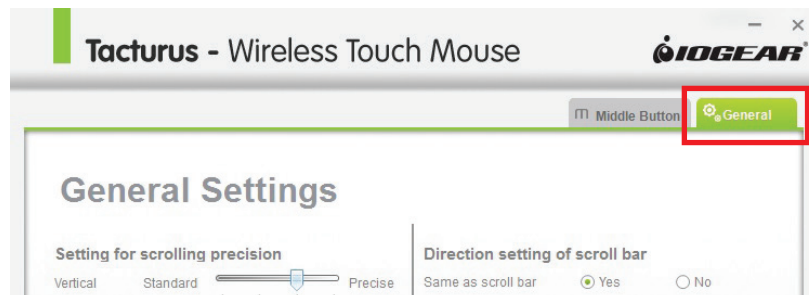


5. Default factory setting.

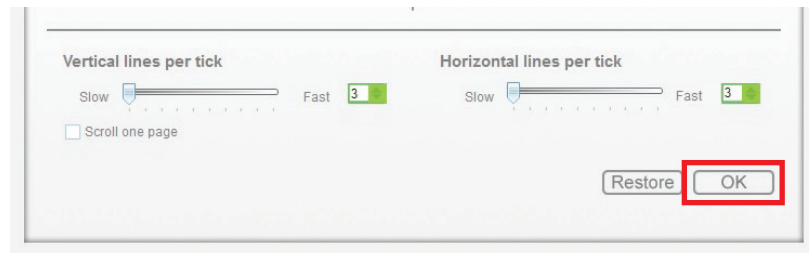


## General Setting

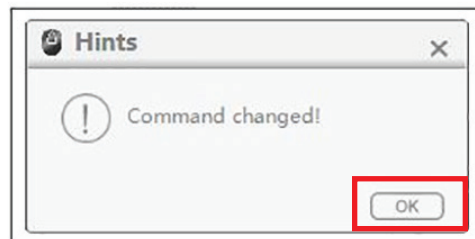
1. Open **General** tab to customize further functionality of the GME581R.



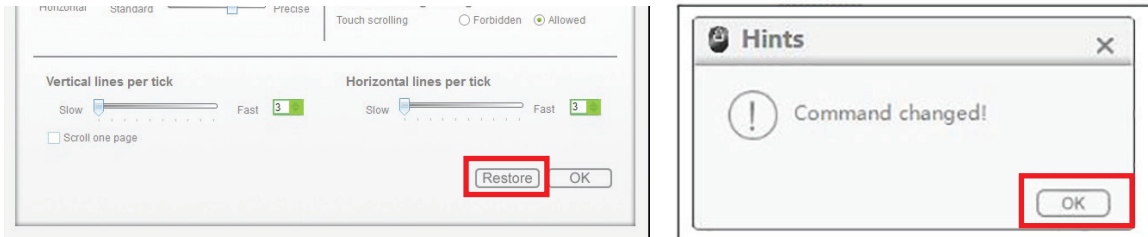
2. Adjust GME581R settings as desired and click **OK**.



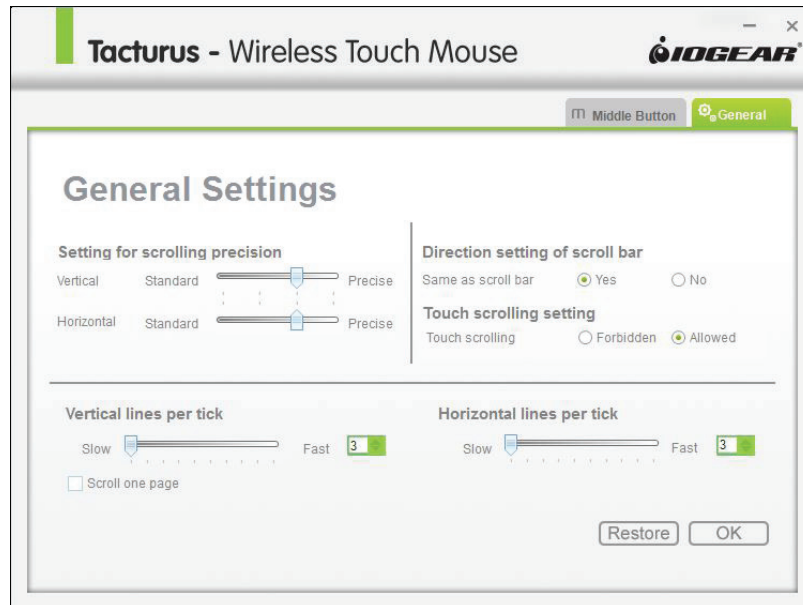
3. Click **OK** to confirm changes made to the setting.



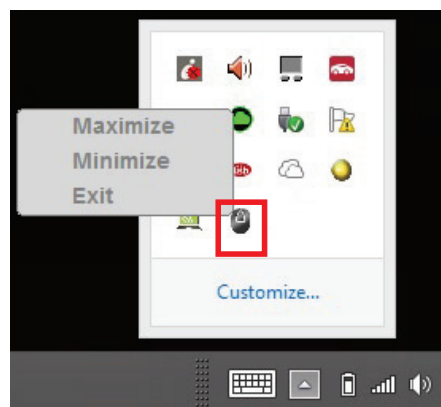
4. Click **Restore** to return to default setting and click **OK** to confirm.



5. Default factory setting.



Maximize, minimize, or exit by right clicking the GME581R mouse icon.



# Compliance Information

## FCC Statement

This equipment has been tested and found to comply with the limits for a Class B digital device, pursuant to Part 15 of the FCC Rules. These limits are designed to provide reasonable protection against harmful interference in a residential setting. This product generates, uses, and can radiate radio frequency energy and, if not installed and used as directed, it may cause harmful interference to radio communications. Although this product complies with the limits for a Class B digital device, there is no guarantee that interference will not occur in a particular installation.

## CE Statement

This device has been tested and found to comply with the following European Union directives: Electromagnetic Capability (2004/108/EC), Low Voltage (2006/95/EC) and R&TTED (1999/5/EC).

# Limited Warranty

## WE'RE HERE TO HELP YOU! NEED ASSISTANCE SETTING UP THIS PRODUCT?

Make sure you:

1. Visit [www.iogear.com](http://www.iogear.com) for more product information
2. Visit [www.iogear.com/support](http://www.iogear.com/support) for live help and product support

## Warranty Information

This product carries a 3 Year Limited Warranty. For the terms and conditions of this warranty, please go to <http://www.iogear.com/support/warranty>

Register online at  
<http://www.iogear.com/register>

## Important Product Information

Product Model \_\_\_\_\_

Serial Number \_\_\_\_\_

# Contact

iogear.custhelp.com  
support@iogear.com  
www.iogear.com  
19641 Da Vinci, Foothill Ranch, CA 92610







## Free Manuals Download Website

<http://myh66.com>

<http://usermanuals.us>

<http://www.somanuals.com>

<http://www.4manuals.cc>

<http://www.manual-lib.com>

<http://www.404manual.com>

<http://www.luxmanual.com>

<http://aubethermostatmanual.com>

Golf course search by state

<http://golfingnear.com>

Email search by domain

<http://emailbydomain.com>

Auto manuals search

<http://auto.somanuals.com>

TV manuals search

<http://tv.somanuals.com>