

# Wireless USB Print Adapter with Bluetooth Technology

---

*User Manual (GBP201)*





## Welcome

Thank you for purchasing the IOGEAR wireless USB print adapter with Bluetooth technology. This print adapter is a first rate connectivity accessory designed to help reduce the frustration of dealing with cables in your home or office. IOGEAR wireless USB print adapter with Bluetooth Technology allows Bluetooth enabled computers to send print job wireless to USB printers.

©2004 IOGEAR. All Rights Reserved. PKG-M0111

IOGEAR, the IOGEAR logo, MiniView, VSE are trademarks or registered trademarks of IOGEAR, Inc. Microsoft and Windows are registered trademarks of Microsoft Corporation. IBM is a registered trademark of International Business Machines, Inc. Macintosh, G3/G4 and iMac are registered trademarks of Apple Computer, Inc. IOGEAR makes no warranty of any kind with regards to the information presented in this document. All information furnished here is for informational purposes only and is subject to change without notice. IOGEAR, Inc. assumes no responsibility for any inaccuracies or errors that may appear in this document.

## Table of Contents

Package Content . . . . .	2
Overview . . . . .	3
Features . . . . .	4
Requirements . . . . .	5
Introduction . . . . .	6
Installation . . . . .	7
Operation . . . . .	17
Specification . . . . .	18
Technical Support . . . . .	19
Radio and TV Interference Statement . . . . .	20
Limited Warranty . . . . .	21

## Package Contents

This package contains:

- 1 Bluetooth print adapter
- 1 USB B-B cable
- 1 User manual
- 1 Warranty registration card

\* If any items are damaged or missing, please contact your dealer.

## Overview

IOGEAR's palm sized single-port Wireless USB Print Adapter with Bluetooth Technology allows any Bluetooth enabled computer to wirelessly send print jobs to a USB printer. It complies with USB 1.1 specifications and the Bluetooth 1.1 specifications. It supports data transmission rates of up to 723 Kbps, and a wireless access range of up to 66 ft (20 meters).

This unit supports HCRP (Hardcopy Cable Replacement Profile) and SPP (Serial Port Profile), all of which resides on onboard flash memory.

This is a plug-n-play unit, it doesn't require any special driver, plug it on the USB printer is all that entails.

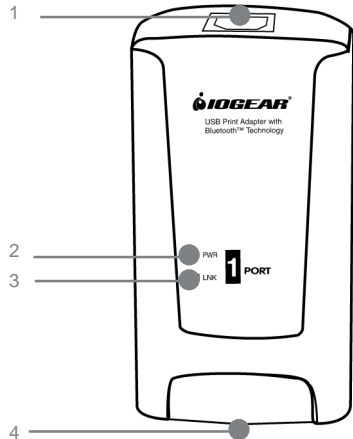
- Allows any Bluetooth enabled computer to wirelessly send the print job to a USB printer
- Plug and Play, easy to install
- Bluetooth Class 2 device with a 66 ft range (20 meters)
- Supports data rate of 723 Kbps
- Supports Pico-net and Scatter-net and up 7 devices
- Complies with USB 1.1 specifications and the Bluetooth 1.1 specifications
- Supports HCRP (Hardcopy Cable Replacement Profile) and SPP (Serial Port Profile)

## System Requirements

- Printers with USB interface.
  - \* Multi function printers not supported.
- Bluetooth enabled computers.



1. USB Port – connect to the USB printer.
2. Power LED – Red after powered on.
3. Link LED – Flashes green after powered on.
4. Power – 5V, 1A.



## Installation

First of all, the computer that you plan to print from needs to have the printer driver, the easiest way is to install the printer driver first. Due to the fact that all printer manufacturers have somewhat different procedure to install the printer driver, we do not cover the printer driver installation in this manual.

Also, we do not cover the procedures of installing Bluetooth driver to your computer, we assume the computer is already Bluetooth enabled. If you are using an IOGEAR Bluetooth USB adapter, please refer to the manual for that unit for the detailed procedures.

The example below uses Epson C62 as the printer, the printer driver is installed after the installation of the Bluetooth print adapter. Here are the steps:

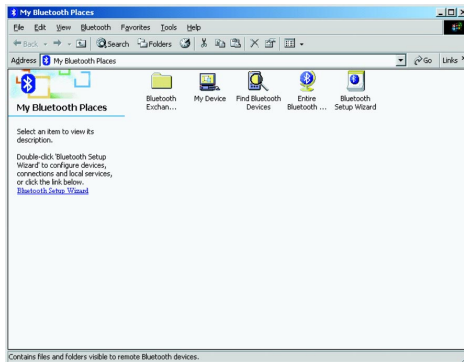
Turn off the power of the printer;

Connect the Bluetooth print adapter to the printer using the USB B-B cable;

Turn on the power for the printer and plug the power adapter on the print adapter;

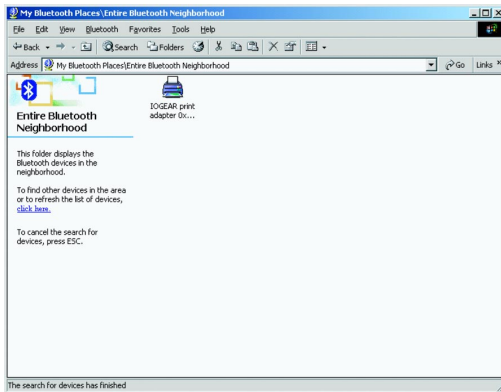
Configure the print adapter:

1. From the Bluetooth enabled computer, click the Bluetooth logo on your screen, then click My Bluetooth Place, then select Entire Bluetooth Neighborhood.

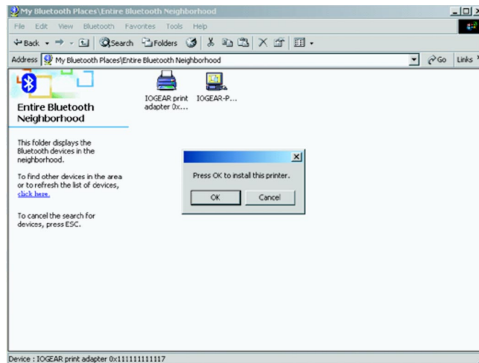


## Installation

2. You can see that the computer starts searching for the Bluetooth devices within the range. The Bluetooth print adapter should be found as shown in the follow window:

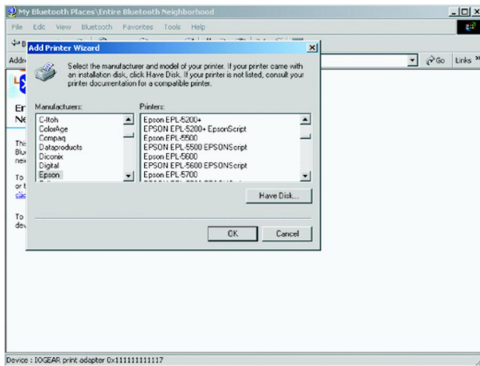


3. Double click on the icon of the IOGEAR Bluetooth adapter. Click OK on the prompted question. (This question would not be prompted if the printer driver is already installed.)

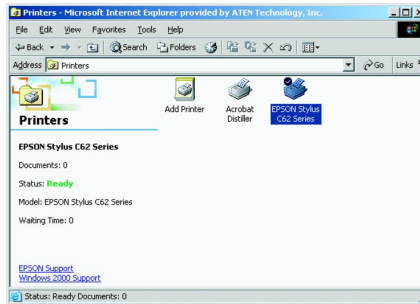


## Installation

4. The following window will be prompted for you to select the appropriate driver. (This step would be skipped if the printer driver is already installed.)

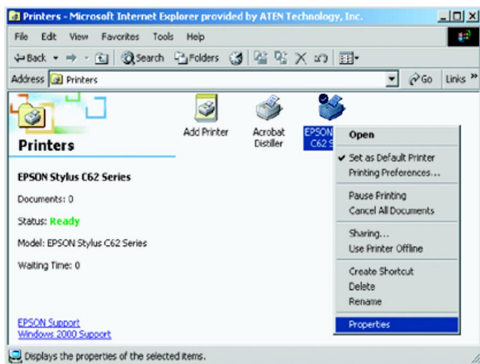


5. Select the appropriate driver, or click on “Have Disk...”. Follow the installation step provided by the printer manufacturer.
6. After the driver installation, go to Control Panel, and select Printers, the printer that you just installed should be in the following window:



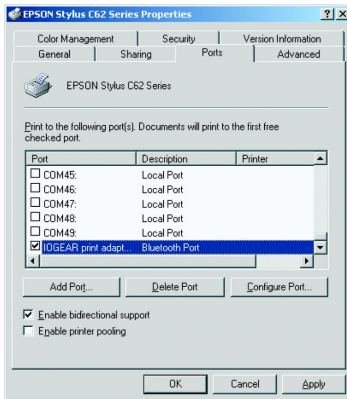
## Installation

7. Right click the printer icon (in this case the Epson C62), select Properties from the drop down menu.



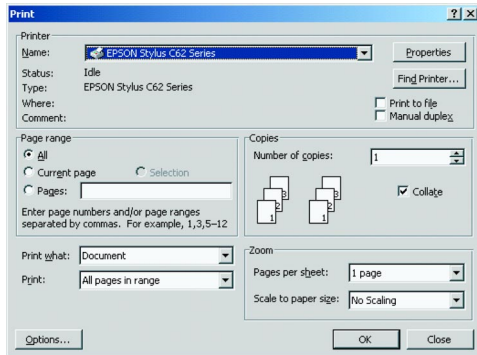


8. Select Ports on the Printer Properties screen, and check the IOGEAR print adapter port, then click OK.

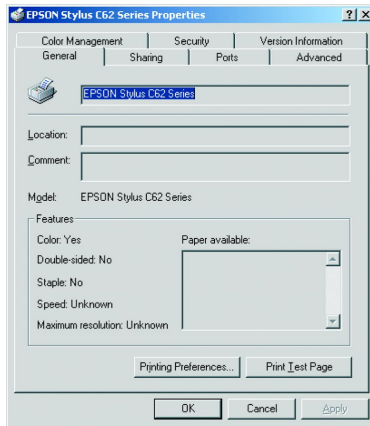


## Installation

9. The installation is done. You can print a document to test it, this printer should be on the printer list already, as shown in the following window.

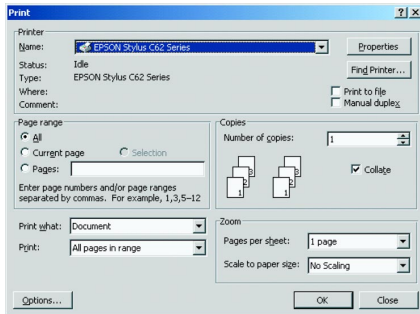


Or, you can click open the printer Properties page again and select Print Test Page.



## Operation

After the print adapter is installed and the test page has printed fine, you will be able to print wirelessly just as if the printer is connected directly to your computer. You should be able to see the printer in the screen similar to the following print screen:



This print adapter can be paired to up to 7 computers, the print jobs will be handled on a first come first serve basis.

<b>Function</b>	<b>GBP201</b>
Data Rate	723 Kbps
Housing - Case	Plastic
LEDs - Link - Power On	Green Red
Operating Range	Up to 66 feet (20 meters)
Power Consumption	5V, 90mA max
Printer Conneciton	USB Type B
Protocols	HCRP, SPP
Radio Frequency	2.402 GHz - 2.4835 GHz Unlicensed ISM band
Sensitivity	- 80 dBm
Transmission Power	0 dBm (Class 2)

## Technical Support

If you need technical support, please check out our IOGEAR Tech Info Library (T.I.L.) at **[www.iogear.com/support](http://www.iogear.com/support)** for the latest tips, tricks, and troubleshooting. The IOGEAR T.I.L. was designed to provide you with the latest technical information about our products. Most of the answers to your questions can be found here, so please try it out before contacting technical support.

Technical support is available Monday through Friday from 7:30 am to 5:30 pm PST and can be reached at (949) 453-8782 or by email **[support@iogear.com](mailto:support@iogear.com)**.

## Radio & TV Interference Statement

**WARNING!!!** This equipment generates, uses and can radiate radio frequency energy and, if not installed and used in accordance with the instruction manual, may cause interference to radio communications. This equipment has been tested and found to comply with the limits for a Class B computing device pursuant to Subpart J of Part 15 of FCC Rules, which are designed to provide reasonable protection against such interference when operated in a commercial environment. Operation of this equipment in a residential area is likely to cause interference, in which case the user at his own expense will be required to take whatever measures may be required to correct the interference.

## Limited Warranty

IN NO EVENT SHALL THE DIRECT VENDOR'S LIABILITY FOR DIRECT, INDIRECT, SPECIAL, INCIDENTAL OR CONSEQUENTIAL DAMAGES RESULTING FROM THE USE OF THE PRODUCT, DISK OR ITS DOCUMENTATION EXCEED THE PRICE PAID FOR THE PRODUCT.

The direct vendor makes no warranty or representation, expressed, implied, or statutory with respect to the contents or use of this documentation, and especially disclaims its quality, performance, merchantability, or fitness for any particular purpose.

The direct vendor also reserves the right to revise or update the device or documentation without obligation to notify any individual or entity of such revisions, or updates. For further inquiries please contact your direct vendor.







## Contact info.

23 Hubble • Irvine, CA 92618 • (P)949.453.8782 • (F)949.453.8785 • [www.iogear.com](http://www.iogear.com)

## Free Manuals Download Website

<http://myh66.com>

<http://usermanuals.us>

<http://www.somanuals.com>

<http://www.4manuals.cc>

<http://www.manual-lib.com>

<http://www.404manual.com>

<http://www.luxmanual.com>

<http://aubethermostatmanual.com>

Golf course search by state

<http://golfingnear.com>

Email search by domain

<http://emailbydomain.com>

Auto manuals search

<http://auto.somanuals.com>

TV manuals search

<http://tv.somanuals.com>