



# Installation Guide

Bluetooth® 2.0 USB Micro Adapter

GBU421

PART NO. M1204



## Welcome

Thank you for purchasing one of the most feature-rich Bluetooth® to USB adapters available. IOGEAR's Bluetooth® to USB adapters are first-rate wireless connectivity accessories designed to help reduce the frustration of dealing with cable glut in your home or office. These adapters allow computers with USB connections to become Bluetooth enabled computers. They comply to Bluetooth® 2.0 and USB 1.1 specifications, and provide users with a 2.1Mbps data rate. They also enable wireless Personal Area Network (PAN) connectivity to Bluetooth enabled devices such as PDA's, printers, cellular phones, computers, etc.

We hope you enjoy using your IOGEAR Bluetooth® to 2.0 USB Micro Adapter, another connectivity solution from IOGEAR.

## Table of Contents

|  |    |   |    |
|--|----|---|----|
| Package Contents                       | 5  | Connect to Network Access                         | 34 |
| Overview                               | 6  | Connect to a Printer                              | 43 |
| Features                               | 8  | Connect to a PDA                                  | 48 |
| Requirements                           | 9  | Pairing   | 54 |
| Introduction                           | 10 | Installation - Windows XP Service Pack2           | 56 |
| Installation-Windows XP                | 11 | Specification                                     | 60 |
| Initial Bluetooth Configuration Wizard | 17 | Technical Support                                 | 61 |
| Installation-Windows Vista             | 19 | Federal Communications Commission (FCC) Statement | 62 |
| Uninstall Drivers                      | 24 | CE Statement                                      | 64 |
| Installation-Mac OS X                  | 25 | Limited Warranty                                  | 65 |
| Connect to a Cellular Phone            | 28 | Contact   | 66 |



## Package Contents

This package contains:

### **GBU421**

- 1 Bluetooth® 2.0 USB Micro Adapter
- 1 Driver CD
- 1 Quick Start Guide
- 1 Warranty Card / Registration Card

### **The Bluetooth Installation CD contains the following:**

- Bluetooth drivers for Windows 2000/XP/Vista
- User Manual for IOGEAR Bluetooth® 2.0 USB Micro Adapter

\* If any items are damaged or missing, please contact your dealer.

## Overview

Bluetooth is a low-power wireless networking standard which uses short radio waves to allow electronic devices to communicate with each other without using cables.

The following applications are supported by Bluetooth® technology:

- Synchronize your Bluetooth PDA with your computer.
- Send your business card to anyone who has a Bluetooth device.
- Send or receive files to or from anyone who has a Bluetooth enabled device.
- Chat with anyone who has a Bluetooth enabled computer.
- Play a one-on-one serial game without a cable.
- Send an e-mail without being wired to the network.
- Dial up to the Internet on your computer over your Bluetooth cellular phone.
- Send a fax from your computer over your Bluetooth cellular phone.
- Transfer data between your cell phone and PC.



Most Bluetooth-enabled devices have the capability to act as:

- A Bluetooth server - these devices provide one or more services, such as access to the Internet, or to other Bluetooth devices.
- A Bluetooth client - these devices use the service(s) provided by Bluetooth servers.

Most Bluetooth devices that can act as both server and client, and can often do both at the same time.

## Features

- Eliminates cables between your computers
- Controls and communicates with Bluetooth enabled devices
- Enables wireless Personal Area Network (PAN) connectivity
- Bluetooth specification 2.0 compliant
- USB specification 1.1 compliant
- Up to 10 meter (30 feet) wireless working distance for Bluetooth® 2.0 USB Micro Adapter.
- Up to 2.1 Mbps data rate
- Small form factor makes it easy to carry and place
- Crisp, easy, and fast installation and setup
- Built-in security to assure the privacy of your communication – Pairing, Encryption, and Authentication
- PC and Mac compatible

# Requirements

## **System Requirements**

Hardware Requirements:

- Available USB port

## **Operation System:**

For PCs: Windows 2000/XP/Vista

For Macs: OS X v10.3.9 or later

## Introduction

IOGEAR®'s Bluetooth® 2.0 USB Micro Adapter is a Class 2 device with a wireless working distance of up to 30 feet (10 meters). This device allows any computer with USB connections to become a Bluetooth™ enabled computer. It complies with Bluetooth 2.0 and USB 1.1 specifications, and provides users with a 2.1 Mbps data transfer rate at ranges up to 30 feet. It also enables wireless Personal Area Network (PAN) connectivity to Bluetooth™ enabled devices such as PDA's, printers, cellular phones, computers, etc. The Wireless Bluetooth™ to USB adapter is compatible with both PC and Mac. It is easy to install and use, and very portable. Another great solution from IOGEAR® for home and mobile networking needs.

Bluetooth® 2.0 USB Micro Adapter is a class 2 device with a wireless working distance of 30 feet (10 meters).

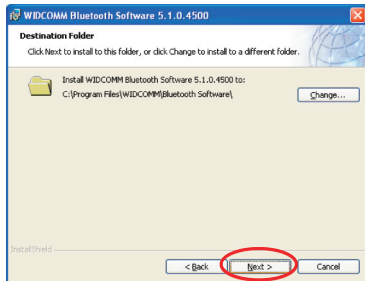
## Installation-Windows XP

The Microsoft Bluetooth stack comes included with Service Pack 2 for Windows XP. If you already have Service Pack 2 installed, you may choose not to install drivers from the installation CD and instead use the Microsoft Bluetooth drivers.

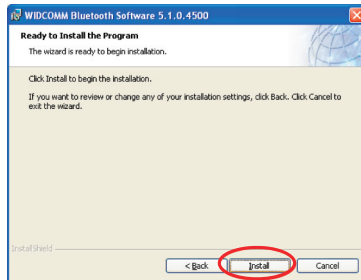
1. Make sure that the IOGEAR Bluetooth adapter is NOT plugged into the computer at this moment. Insert the IOGEAR installation CD into your CD-ROM drive. The auto-start feature will bring up the installation window to begin the driver installation. Click on **Windows Installation** to start the Bluetooth installation. If the installation CD does not auto-start, simply browse to your CD drive, double click on the "Setup.exe" and run the setup file. Please follow the on-screen instructions to install the drivers.



2. Click on **Next** to continue

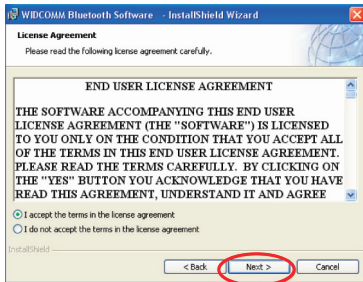


3. The wizard is now ready to being the installation. Click **Install** to continue.

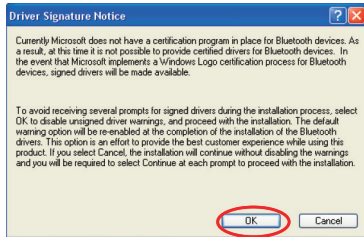




4. If you accept the license agreement, click **Next**.



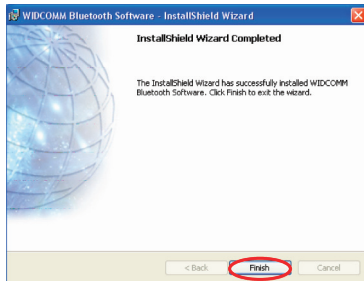
5. When you approach the end of the installation process, the Driver Signature Notice may appear. Simply click **OK** to proceed with the installation



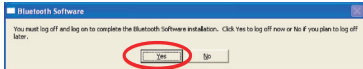
6. During the install, a “Bluetooth Device not Found” window will appear. Do not plug in the Bluetooth® adapter at this time, click **Cancel** to continue.



7. Once the driver installation has completed, click **Finish**.



8. In order to complete the Bluetooth installation software you will be asked to Log off from your computer. Click Yes to log off.



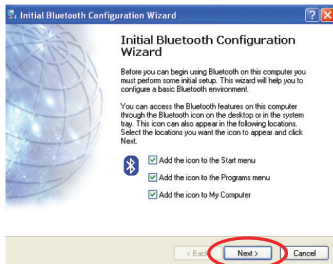
# Initial Bluetooth Configuration Wizard - Windows XP

## For Windows XP

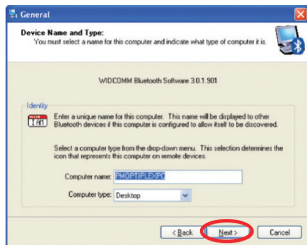
1. Double click on the Bluetooth icon in the system tray. This will start the "Initial Bluetooth Configuration Wizard."



2. Click **Next** to continue.



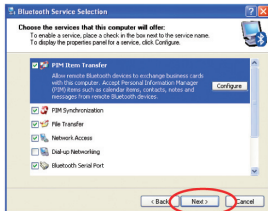
- Next, enter a unique name for this computer. This name will be displayed to other Bluetooth devices. Select a computer type from the drop-down menu and click **Next**.



- Click **Next** to configure the services this computer will offer to other Bluetooth devices.



5. Select the services that you would like your computer to offer. Click **Next** to proceed.
6. The Bluetooth software will install the selected services. This process may take a while.

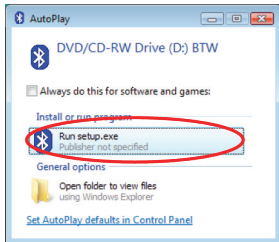


7. If you wish to setup a Bluetooth device now click Next. Otherwise click Skip and click **Finish** on the final screen to end the Bluetooth wizard.



## Installation-Windows Vista

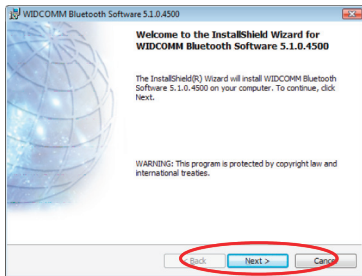
1. Insert the IOGEAR installation CD into your CD-ROM drive. Make sure the IOGEAR Bluetooth adapter is NOT plugged into the computer before installing the software. Insert the IOGEAR installation CD into your CD-ROM drive. The auto-start feature will bring up the auto play options for the installation CD. Simply click on **Run setup.exe** to bring up the IOGEAR auto-run screen.



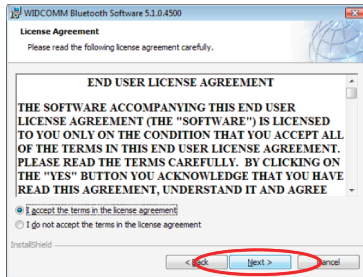
2. Click on **WINDOWS Installation** to start.



3. Click Next to continue.

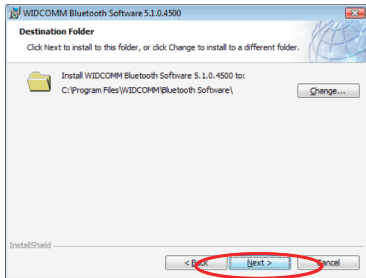


4. If you accept the agreement, click **Next** to continue.

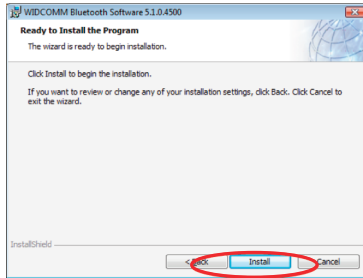




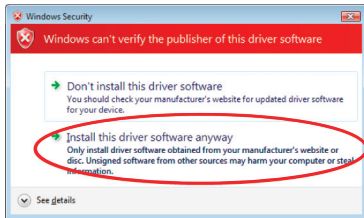
5. Click **Next** to continue.



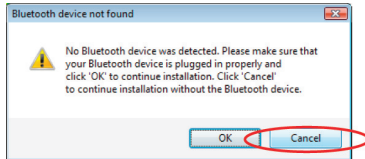
6. Click **Install** to begin the installation.



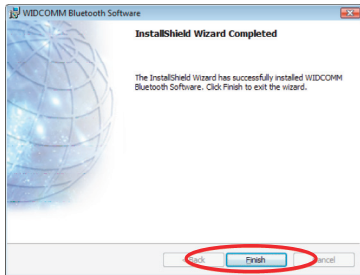
7. If you are prompted by the windows security message select **“Install this driver software anyway.”**



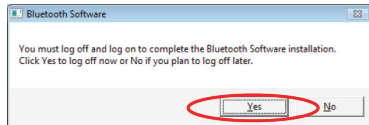
8. During the install, a “Bluetooth Device not Found” window will appear. **DO NOT** plug in the Bluetooth adapter at this time, simply click **Cancel** to proceed with the driver installation without connecting the Bluetooth device.



9. Click **Finish** to complete the installation.



10. In order to complete the Bluetooth software installation, you will be asked to Log off from your computer. Click **Yes** to log off.



## Initial Bluetooth Configuration Wizard - Vista

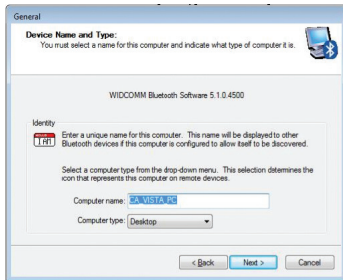
1. Double click on the Bluetooth icon in the system tray. This will start the "Initial Bluetooth Configuration Wizard".



2. Click **Next** to continue.



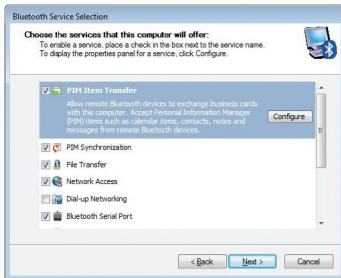
3. Enter a unique name for this computer. This name will be displayed to other Bluetooth devices. Select a computer type from the drop-down menu and click **Next**.



4. Click **Next** to configure the services this computer will offer to other Bluetooth devices.



5. Select the services that you would like your computer to offer. Click **Next** to proceed.
6. The Bluetooth software will install the selected services. This process may take a while.



7. If you wish to setup a Bluetooth device now click **Next**. Otherwise click Skip and click **Finish** on the final screen to end the Bluetooth wizard.



# Uninstall Drivers

## Windows XP Service Pack 2

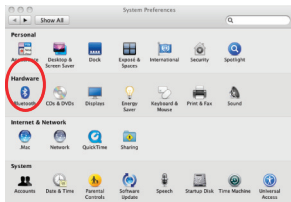
1. First, unplug the IOGEAR USB Bluetooth® 2.0 USB Micro Adapter from your computer
2. Go to Control Panel (Start > Settings > Control Panel)
3. Click on **Add or Remove Programs**
4. Click on IOGEAR Bluetooth Software and click on **[Remove]**
5. When the uninstall is complete, restart your computer

## Windows Vista

1. First, unplug the IOGEAR Bluetooth® 2.0 USB Micro Adapter from your computer
2. Go to Control Panel (Start > Control Panel)
3. Click on Uninstall a program under Programs or Click on Programs and Features (Control Panel Classic View)
4. Click on Widcomm Bluetooth Software and click on **[Remove]**
5. When the uninstall is complete, restart your computer

# Installation-Mac OS X

1. Use of the IOGEAR Bluetooth® 2.0 USB Micro Adapter requires MAC OS X v10.3.9 or later. There is no need to install any additional drivers, as Apple provides all required Bluetooth drivers under Mac OS X v10.3.9.
2. Click on the Bluetooth icon and make sure the box next to **Discoverable** is checked (in 10.3 and 10.4 this will be on the Settings tab). To connect and pair with a Bluetooth device, click on **Set Up New Device** (in 10.3 and 10.4 this will be on the Devices tab).



Simply plug in your Bluetooth® adapter into an available USB port on your computer, and go to System Preferences.

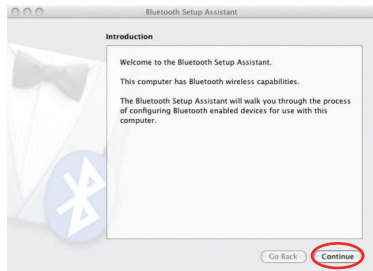




3. If you have already connected a device under 10.5 the Bluetooth window will look like this. Instead of clicking the Set Up New Device button, click the button with a plus (+) symbol below the device list.



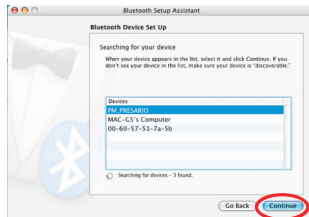
4. This will initiate the Bluetooth Setup Assistant; click **Continue** to proceed



5. On this window, you can select what type of Bluetooth device you want to setup. Please make your choice below and then click **Continue**.



6. Your computer will search Bluetooth devices in your area and display them under the window below. Select the device you wish to communicate with and then click **Continue** to pair/connect to your device.
7. Please refer to the Apple website for further information on Apple Bluetooth support at [www.apple.com](http://www.apple.com).

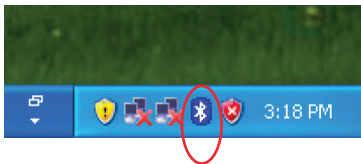


# Connect to a Cellular Phone

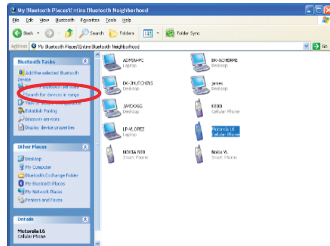
## How to connect to a Cellular Phone (Bluetooth Enable)

### For Windows XP

1. Double-click on the IOGEAR Bluetooth icon in the system tray.



2. Next, click on **Search for devices in range**. As illustrated below, the Bluetooth-enabled cell phone is detected.

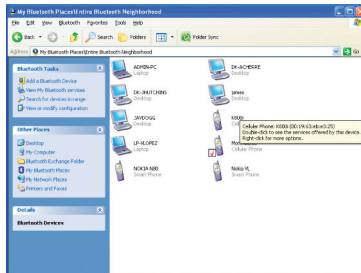




- To find out what services are available on your phone, simply double click on the phone icon.

Services offered by your cell phone may depend on the features supported by your specific model and may or may not require additional software by the phone manufacturer.

Please visit your phone manufacturer website to for more information.

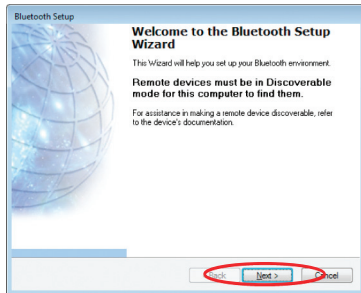


## Bluetooth Phone setup on Windows XP

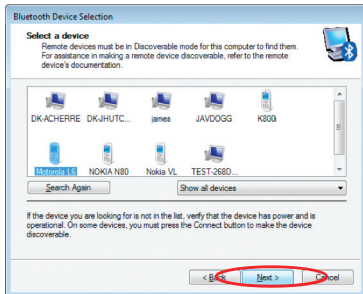
1. Right click on the system tray and select **Add a Bluetooth Device**



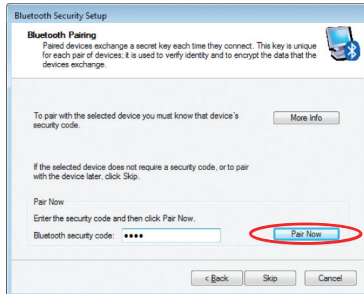
2. Make sure to set your Bluetooth cellular phone in "discoverable" mode. Click **Next** to continue.



3. Your computer will search for all Bluetooth devices in your area and list them as shown below. Select your cellular phone and click **Next**.



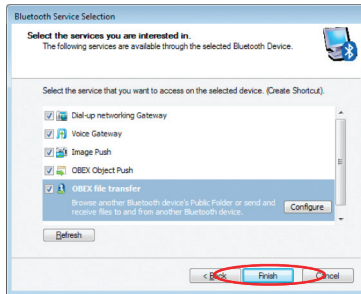
4. If your cell phone has a specific passkey you will need to enter it on the Bluetooth security code box, otherwise please enter a random 4 digit passkey and click **Pair Now**.



Note:

Your cell phone will prompt you to enter the same security code. Make sure you enter the same security code as on the computer to complete the pairing process.

5. You will be asked to select the services that are available on your phone. It is recommended to leave all services checked. Click **Finish** to continue.





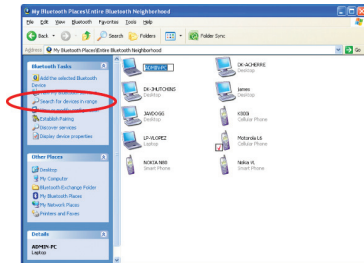
## Connect to Network Access

### For Windows XP

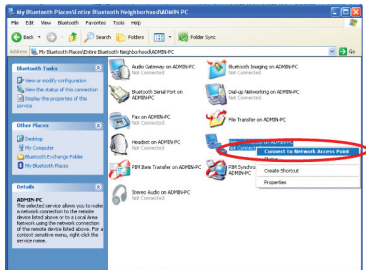
1. Double-click on the Bluetooth icon in the system tray.



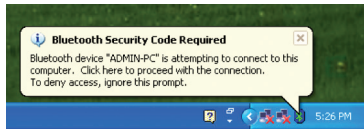
2. Next, click on **Search for devices in range**. As illustrated below, the Bluetooth-enabled computer is found.



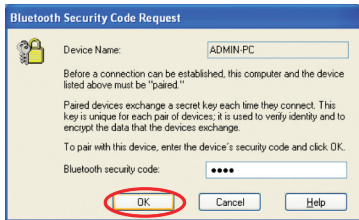
3. Double click on the device to display a list of its services. To establish a network connection, right click on **Network Access** and select **Connect to Network Access Point**.



4. A message by the Bluetooth software will appear below the task bar. Double click on the bluetooth icon or on the message bubble.

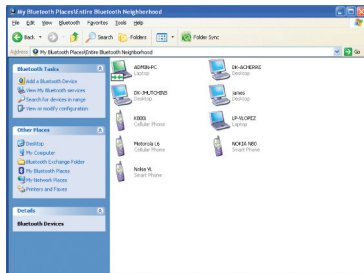


5. You will be asked to enter a security code to establish a secure Bluetooth connection with the other PC. Please enter a 4 digit security code and click **OK**.



Note: Once you click OK, you will be prompted to accept/deny the connection on the other computer.

6. Once you establish the connection, the Network Access icon will turn green indicating that it is now connected.

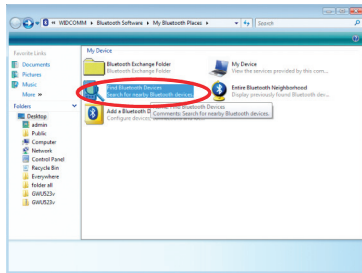


## For Windows Vista

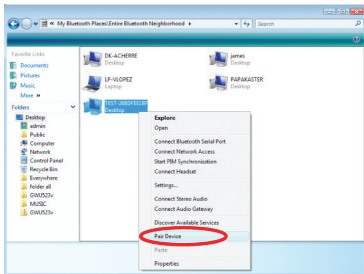
1. Double click on the Bluetooth icon in the task bar to bring up My Bluetooth Places.



2. Double click on **Find Bluetooth Devices**



3. Your computer will search for all Bluetooth devices around your area. To connect to a Bluetooth computer, right click on the Bluetooth computer that you would like to connect and select **Pair Device**.

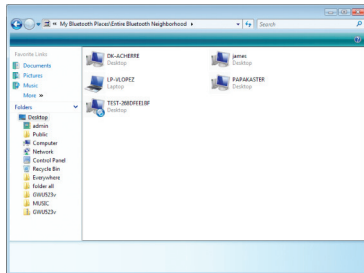


4. To establish a secure connection with the other Bluetooth enabled computer, you will need to enter a passkey. Please enter a 4 digit security code and click **OK**.

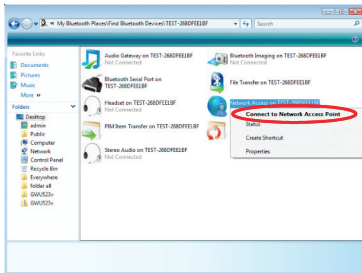


5. On the other Bluetooth enabled computer that you are attempting to connect, you will receive a message on the task bar asking for permission to establish the Bluetooth connection. If you accept the connection, it will ask you to enter the same security code that you entered on the first computer. Enter the security code to complete the Bluetooth connection.

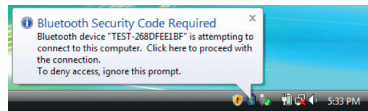
6. Once you have entered the security code, double click on the connected Bluetooth computer icon on, and it will bring up a list of available services that are available on the connected computer.



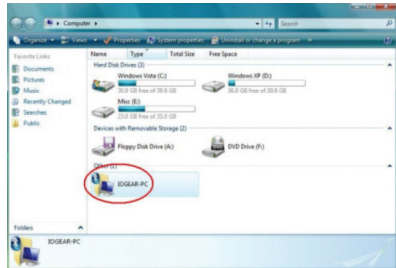
7. As an example, we will establish a connection using the Network Access service. To do so, right click on the Network Access and select **Connect to Network Access Point**.



8. A message will appear in the task bar. Please double click on the message and enter the same security code that you have entered to connect with the Bluetooth enabled computer.



9. A Bluetooth connection is shown when you open Computer from the start menu. Now your device will be able to share its internet connection, printers, and files. (Make sure the desired share options' checkboxes are checked under Bluetooth setting by right-clicking on the Bluetooth icon in the system tray.



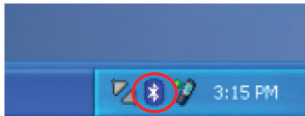


# Connect to a Printer

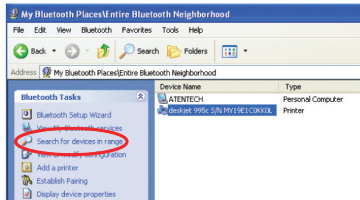
## How to connect to a Bluetooth Enabled Printer

### For Windows XP

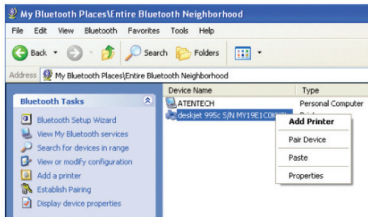
1. Double-click on the IOGEAR Bluetooth icon in the system tray.



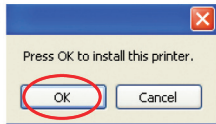
2. Next, double click on “Search for devices in range”.



3. Right-click the printer you would like to add and select **Add Printer**.

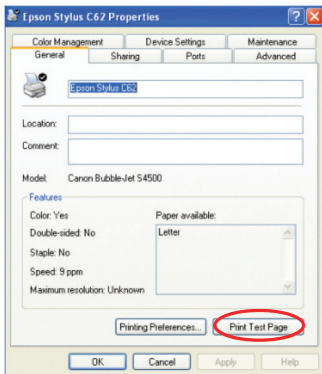


4. Click **OK** to install the printer.



Note: If this is a new printer you are setting up, you will need to install the driver and software of your printer. Please follow the printer setup wizard to setup your printer.

5. If your printer is already installed, the printer properties window will appear. Click on **Print Test Page** to print a test page.



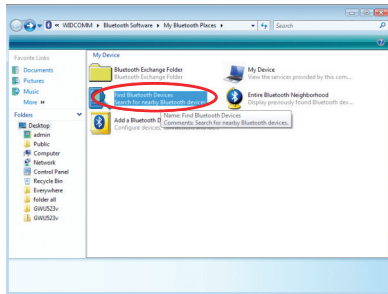
## How to connect to a Bluetooth Enabled Printer

### For Windows Vista

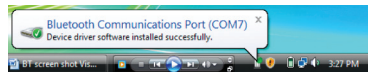
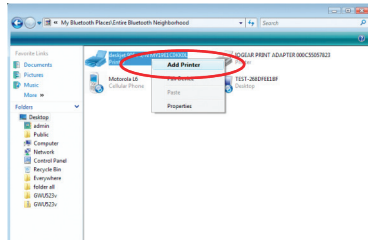
1. Double-click on the IOGEAR Bluetooth icon in the system tray.



2. Double click on **Find Bluetooth Devices**



3. Please make sure that your Bluetooth enabled printer is powered on. An icon of your printer will show up on the Bluetooth window. Right click on the printer and select **Add Printer**. If this is the first time you are setting up a printer, make sure that you install the printer driver prior to adding the Bluetooth enabled printer on your computer.

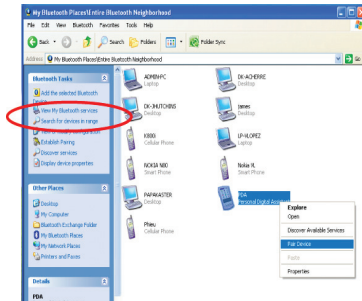


# Connect to a PDA

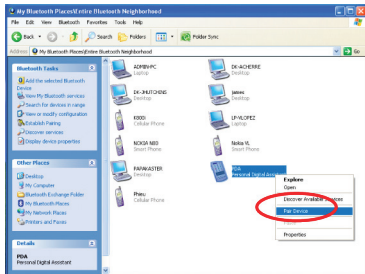
## How to connect to a Bluetooth Enabled PDA

### For Windows XP

1. Double-click on the Bluetooth icon in the system tray.
2. Next, double click on “**Search for devices in range**”.



3. Right click on the Bluetooth enabled PDA device and select **Pair Device** to establish the connection with the PDA.



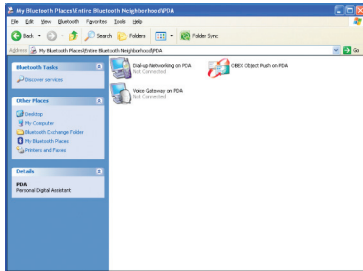
4. You will be asked to enter a four digit security code. Please enter a random 4 digit passkey and click **OK** to continue.



Note:

Your PDA will prompt you to enter the same security code. Please confirm and enter the same security code on your PDA to establish the connection.

- To find out what services are available on your PDA, double click on the Bluetooth PDA icon.

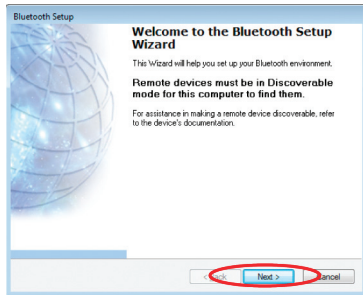
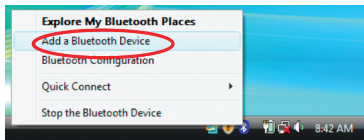




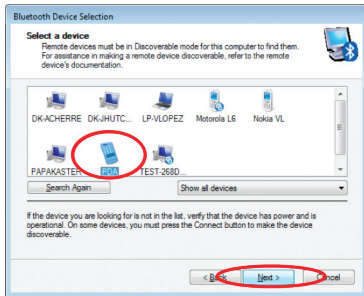
## How to connect to a Bluetooth Enabled PDA

### For Windows Vista

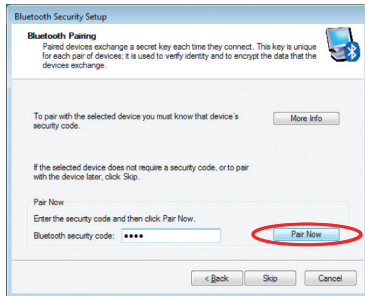
1. Right click on the Bluetooth icon next to the task bar and select **“Add a Bluetooth Device”**.
2. The Bluetooth Setup wizard will start, click Next to continue.



3. The Bluetooth Setup wizard will identify all Bluetooth devices around your area. Select the PDA and click **Next** to continue.

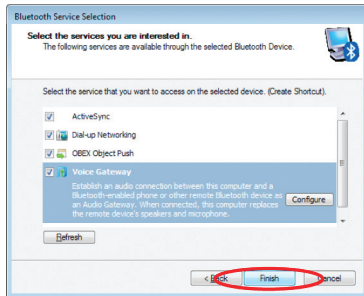


4. You will be asked to enter a security code to connect with the PDA. Please enter a random 4 digit code and click **Pair Now**.



5. Your PDA will prompt you to enter the same security code. Enter the security code on your PDA to establish the Bluetooth connection.

6. Depending on your PDA, you will be asked to select the services that are equipped on your PDA. Select the services that you would like to use and click Finish.



## Pairing

### What is “Pairing?”

Pairing is a Bluetooth function that enables Bluetooth devices to remain permanently linked to another.

### What “Pairing” means in terms of security?

As mentioned, Pairing allows devices to permanently link with each other. The pass key authentication will also be perpetuated in Pairing, meaning that devices will not ask for a **pass key** once they are paired. Paired devices will remain linked, even if other paired devices are turned off. Once a paired device turns back on, it is ready to be used and service requests will not ask for the **pass key** again. The built-in 128 bit security encryption of Bluetooth assures the privacy of your paired devices. Note: If devices are unpaired, it is necessary to enter a **pass key** each time a service request is made from or to another Bluetooth device.

## Pairing Devices

1. Right-click on the Bluetooth device and select on **"Pair device"**.
2. Enter a Pass Key when asked.  
Note: The Pass Key on both devices must be the same!  
Example: If Device 1 tries to pair with Device 2, Device 1 will prompt for a Pass Key. Enter any Pass Key. Device 2 will then ask for a Pass Key. Enter the Pass Key, which has been set for Device 1. Done!
3. The device is now paired with your computer.

## Unpairing Devices

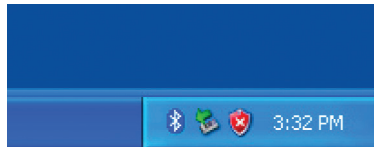
1. Right-click on the paired Bluetooth device in the list and select on **"Unpair Device"**.
2. The device is now unpaired

## Installation-Windows XP Service Pack 2

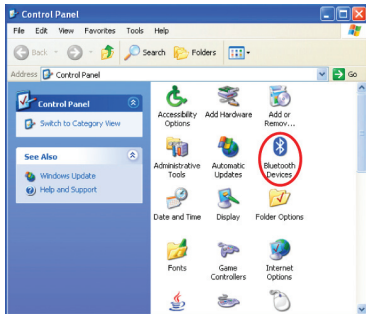
### Windows XP Service Pack-Bluetooth Stack

If you are running Windows XP with Service Pack 2, you may use the Bluetooth drivers provided by Microsoft. Keep in mind, however, that this Bluetooth stack has limited Bluetooth profiles support. For more information, please visit the Microsoft website at [www.microsoft.com](http://www.microsoft.com).

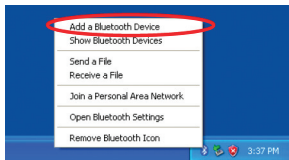
1. To use the Microsoft Bluetooth stack, simply plug in your IOGEAR Bluetooth adapter into an available USB port on your computer. Windows will automatically detect the Bluetooth device and install all necessary drivers.
2. You will then see a Bluetooth icon on your tray bar that allows you to perform all Bluetooth operations, as shown below:



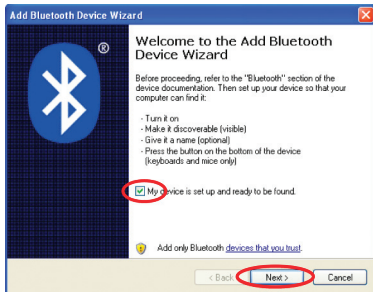
3. Optionally, you can find this in **Control Panel** >**Bluetooth Devices**.



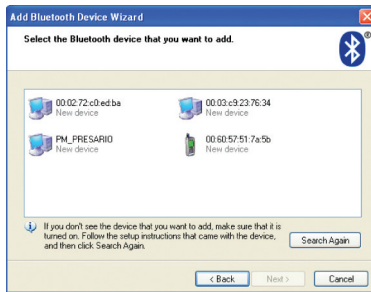
4. To connect with your Bluetooth devices, simply right-click on the Bluetooth icon on the tray bar and select **Add a Bluetooth Device**.



5. Make sure to set your Bluetooth device in “discoverable” mode and check the box as shown on the picture.



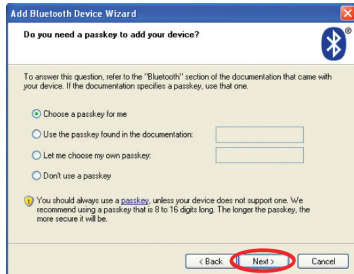
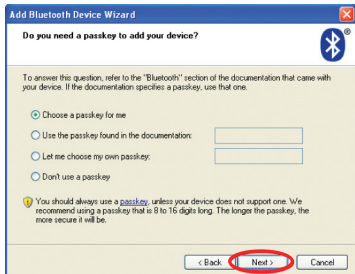
6. Your computer will search for all the Bluetooth devices in your area and list them. Select the desired device, and click **Next**.





7. Please consult the user manual of your Bluetooth device to see if you need a Passkey to pair/establish a connection.

8. Your Bluetooth device will then connect to the IOGEAR Bluetooth adapter. To finish the process, simply click **Finish**.



## Specifications

### GBU421

|                       |   |
|-----------------------|---|
| Connectors            | USB Type A1                               |
| Data Rate             | 2.1 Mbps                                  |
| Frequency Band        | 2.402 GHz - 2.4835GHz Unlicensed ISM band |
| Humidity              | 10% - 90% non-condensing                  |
| Interface             | USB                                       |
| Modulation            | GFSK (Gaussian Frequency Shift Keying)    |
| Operating Temperature | 0°C - 50°C                                |
| Security              | Pairing, Encryption, Authentication       |
| Sensitivity           | Minimum - 76dB                            |
| Transmission Power    | 4dBm max with power control (Class 2)     |
| Weight                | 0.4 oz.                                   |

## Technical Support

If you need technical support, please check out our IOGEAR Tech Info Library (T.I.L.) at [www.iogear.com/support](http://www.iogear.com/support) for the latest tips, tricks, and troubleshooting. The IOGEAR T.I.L. was designed to provide you with the latest technical information about our products. Most of the answers to your questions can be found here, so please try it out before contacting technical support.

Technical support is available Monday through Friday from 8:00 am to 5:00 pm PST and can be reached at (949) 453-8782 and (866) 946-4327 or by email [support@iogear.com](mailto:support@iogear.com).

## Federal Communications Commission (FCC) Statement

15.21

You are cautioned that changes or modifications not expressly approved by the part responsible for compliance could void the user's authority to operate the equipment.

15.105(b)

This equipment has been tested and found to comply with the limits for a Class B digital device, pursuant to part 15 of the FCC rules. These limits are designed to provide reasonable protection against harmful interference in a residential installation. This equipment generates, uses and can radiate radio frequency energy and, if not installed and used in accordance with the instructions, may cause harmful interference to radio communications. However, there is no guarantee that interference will not occur in a particular installation. If this equipment does cause harmful interference to radio or television reception, which can be determined by turning the equipment off and on, the user is encouraged to try to correct the interference by one or more of the following measures:

- Reorient or relocate the receiving antenna.
- Increase the separation between the equipment and receiver.
- Connect the equipment into an outlet on a circuit different from that to which the receiver is connected.
- Consult the dealer or an experienced radio/TV technician for help.



**Operation is subject to the following two conditions:**

1. this device may not cause interference and
2. this device must accept any interference, including interference that may cause undesired operation of the device.

**FCC RF Radiation Exposure Statement:**

This equipment complies with FCC radiation exposure limits set forth for an uncontrolled environment. End users must follow the specific operating instructions for satisfying RF exposure compliance. This transmitter must not be co-located or operating in conjunction with any other antenna or transmitter.

## CE Statement

This device has been tested and found to comply with the requirements set up in the council directive on the approximation of the law of member states relating to EMC Directive 89/336/EEC, Low Voltage Directive 73/23/EEC and R&TTE Directive 99/5/EC.

## Limited Warranty

IN NO EVENT SHALL THE DIRECT VENDOR'S LIABILITY FOR DIRECT, INDIRECT, SPECIAL, INCIDENTAL OR CONSEQUENTIAL DAMAGES RESULTING FROM THE USE OF THE PRODUCT, DISK OR ITS DOCUMENTATION EXCEED THE PRICE PAID FOR THE PRODUCT.

The direct vendor makes no warranty or representation, expressed, implied, or statutory with respect to the contents or use of this documentation, and especially disclaims its quality, performance, merchantability, or fitness for any particular purpose.

The direct vendor also reserves the right to revise or update the device or documentation without obligation to notify any individual or entity of such revisions, or updates. For further inquiries please contact your direct vendor.

## Contact

### **IOGEAR, INC.**

23 Hubble  
Irvine, CA 92618

**P** 949.453.8782

**F** 949.453.8785

Visit us at: **[www.iogear.com](http://www.iogear.com)**

©2008 IOGEAR. All Rights Reserved. PKG-M1204

IOGEAR and the IOGEAR logo are trademarks or registered trademarks of IOGEAR, Inc. Microsoft and Windows are registered trademarks of Microsoft Corporation. IBM is a registered trademark of International Business Machines, Inc. IOGEAR makes no warranty of any kind with regards to the information presented in this document. All information furnished here is for informational purposes only and is subject to change without notice. IOGEAR, Inc. assumes no responsibility for any inaccuracies or errors that may appear in this document.





## About Us



### FUN

IOGEAR offers connectivity solutions that are innovative, fun, and stylish, helping people enjoy daily life using our high technology products.



### GREEN

IOGEAR is an environmentally conscious company that emphasizes the importance of conserving natural resources. The use of our technology solutions helps reduce electronic waste.



### HEALTH

IOGEAR supports healthy and fit lifestyles. By integrating products with the latest scientific developments, IOGEAR's solutions enhance the life of end-users.

© 2007 IOGEAR, INC.

## Free Manuals Download Website

<http://myh66.com>

<http://usermanuals.us>

<http://www.somanuals.com>

<http://www.4manuals.cc>

<http://www.manual-lib.com>

<http://www.404manual.com>

<http://www.luxmanual.com>

<http://aubethermostatmanual.com>

Golf course search by state

<http://golfingnear.com>

Email search by domain

<http://emailbydomain.com>

Auto manuals search

<http://auto.somanuals.com>

TV manuals search

<http://tv.somanuals.com>